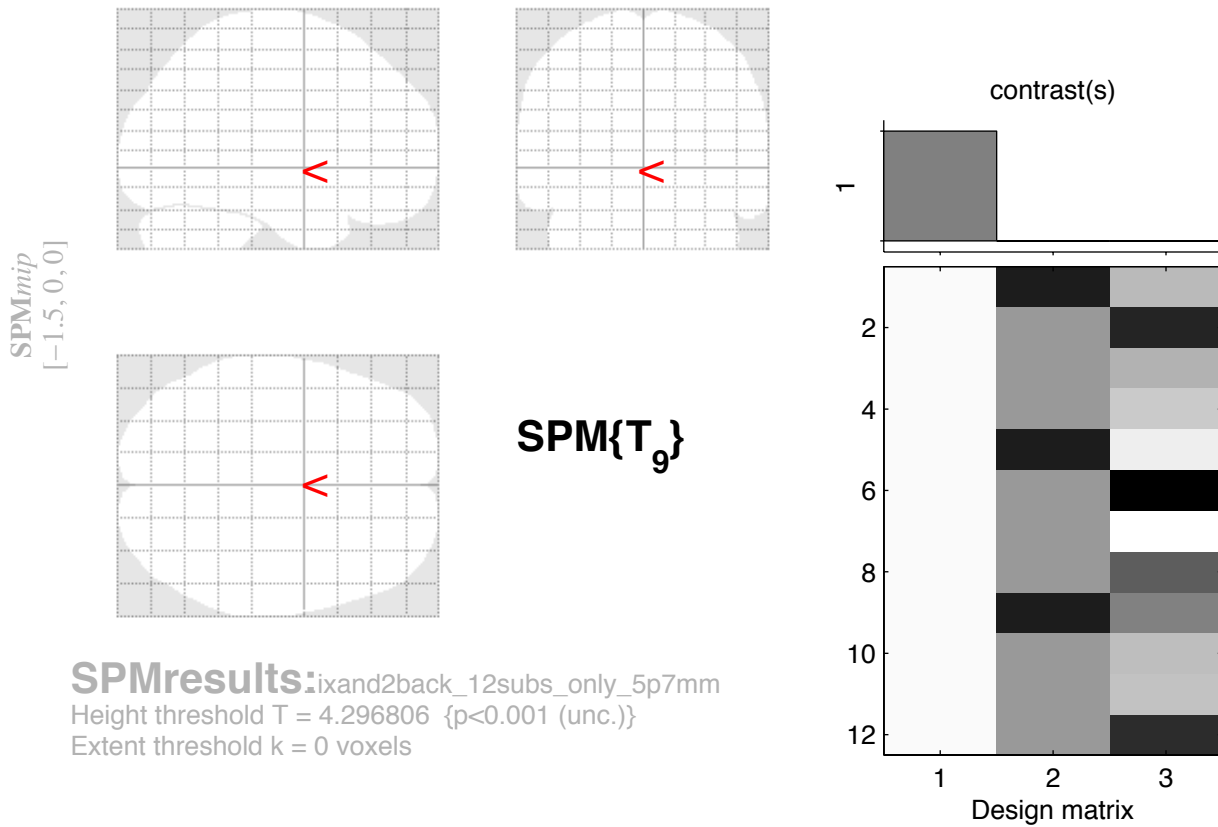


# SYN increases fixand2back, 12 subs, 5p7mm



**SPMresults:**ixand2back\_12subs\_only\_5p7mm  
 Height threshold  $T = 4.296806$  { $p < 0.001$  (unc.)}  
 Extent threshold  $k = 0$  voxels

## Statistics: $p$ -values adjusted for search volume

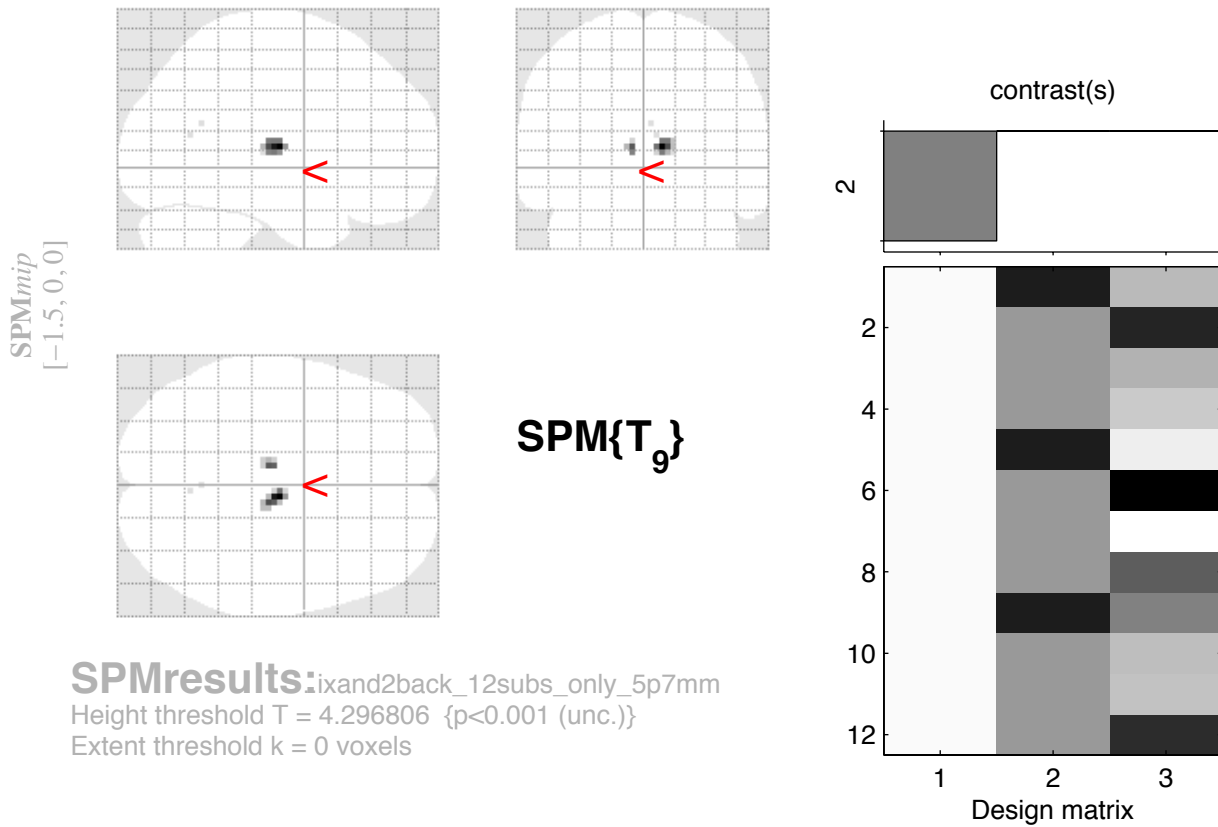
set-level		cluster-level			peak-level					mm	mm	mm	
$p$	$c$	$p_{FWE-corr}$	$q_{FDR-corr}$	$k_E$	$p_{uncorr}$	$p_{FWE-corr}$	$q_{FDR-corr}$	$T$	$(Z_{\alpha})$	$p_{uncorr}$			

*no suprathreshold clusters*

table shows 3 local maxima more than 8.0mm apart

Height threshold: $T = 4.30$ , $p = 0.001$ (1.000)	Degrees of freedom = [1.0, 9.0]
Extent threshold: $k = 0$ voxels	FWHM = 9.3 11.0 10.2 mm mm mm; 3.1 3.7 3.4 {voxels}
Expected voxels per cluster, $\langle k \rangle = 1.863$	Volume: 1294110 = 47930 voxels = 1111.9 resels
Expected number of clusters, $\langle c \rangle = 26.75$	Voxel size: 3.0 3.0 3.0 mm mm mm; (resel = 38.73 voxels)
FWEp: 10.666, FDRp: Inf, FWEc: Inf, FDRc: Inf	

# SYN decreases, fixand2back, 12 subs only, 5p7m



## Statistics: $p$ -values adjusted for search volume

set-level		cluster-level			peak-level					mm mm mm			
$p$	$c$	$p_{\text{FWE-corr}}$	$q_{\text{FDR-corr}}$	$k_E$	$p_{\text{uncorr}}$	$p_{\text{FWE-corr}}$	$q_{\text{FDR-corr}}$	$T$	$(Z_{\text{e}})$	$p_{\text{uncorr}}$			
1.000	4	0.029	0.004	25	0.001	1.000	0.993	5.81	3.66	0.000	8	-15	9
		0.482	0.049	10	0.025	1.000	0.993	5.17	3.44	0.000	-8	-21	9
		1.000	0.450	1	0.450	1.000	0.993	4.31	3.09	0.001	4	-63	15
		1.000	0.450	1	0.450	1.000	0.993	4.31	3.09	0.001	2	-57	21

table shows 3 local maxima more than 8.0mm apart

Height threshold:  $T = 4.30$ ,  $p = 0.001$  (1.000)      Degrees of freedom = [1.0, 9.0]  
 Extent threshold:  $k = 0$  voxels      FWHM = 9.3 11.0 10.2 mm mm mm; 3.1 3.7 3.4 {voxels}  
 Expected voxels per cluster,  $\langle k \rangle = 1.863$       Volume: 1294110 = 47930 voxels = 1111.9 resels  
 Expected number of clusters,  $\langle c \rangle = 26.75$       Voxel size: 3.0 3.0 3.0 mm mm mm; (resel = 38.73 voxels)  
 FWEp: 10.666, FDRp: Inf, FWEc: 25, FDRc: 10