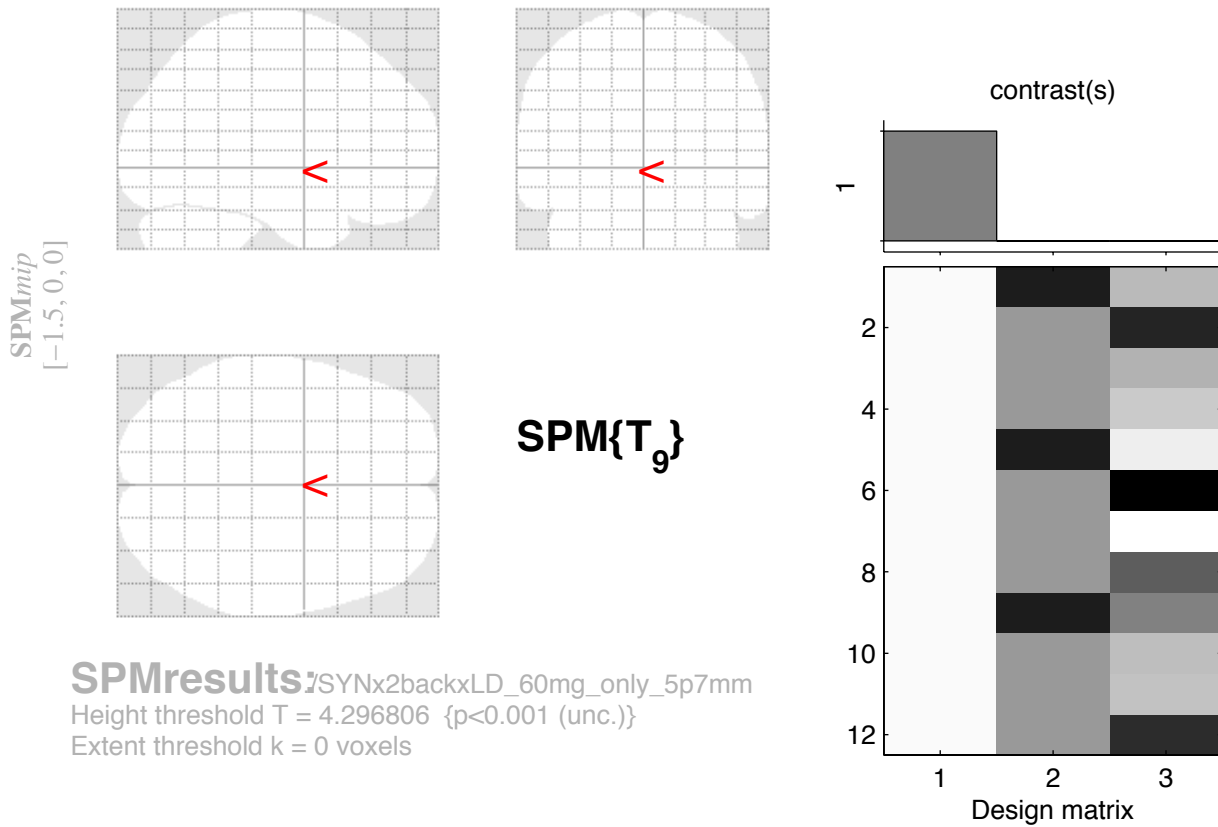


SYN x 2back x LD increases, 60 mg only, 5p7mm



Statistics: p-values adjusted for search volume

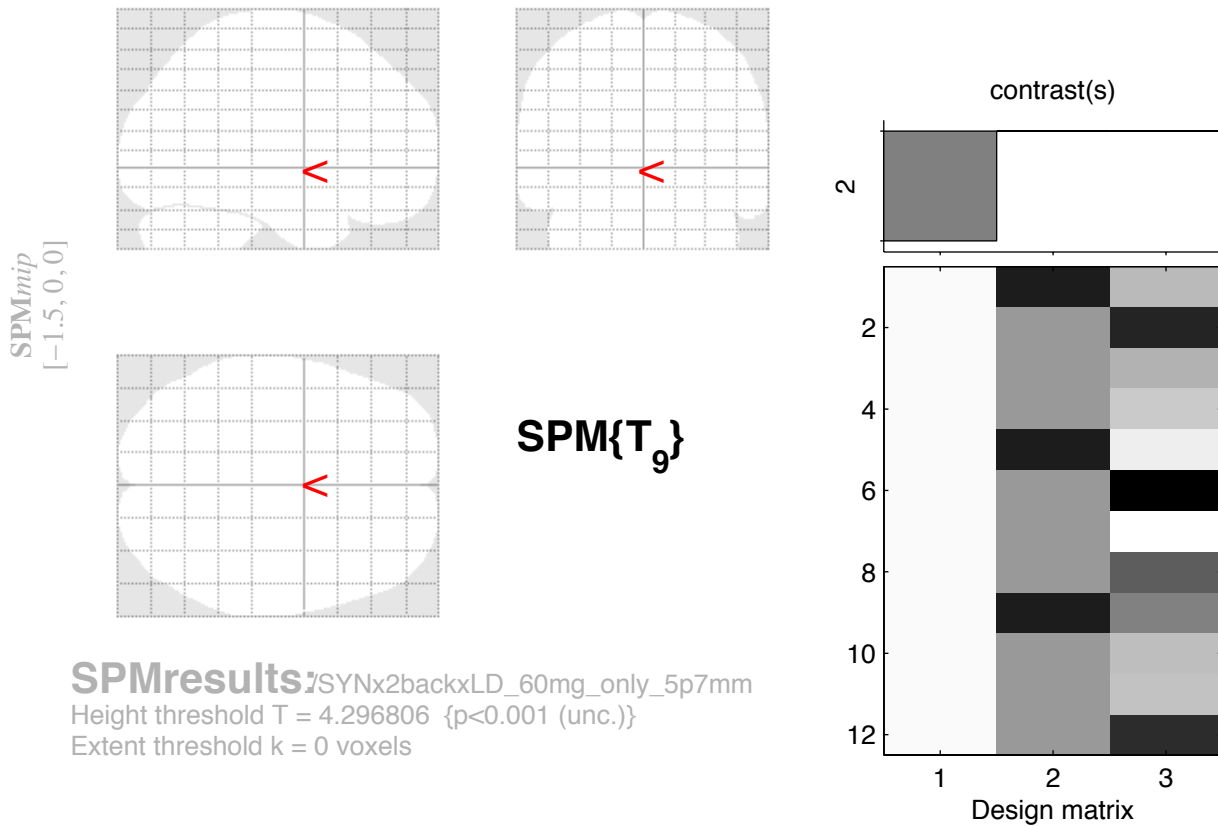
set-level		cluster-level			peak-level					mm	mm	mm	
p	c	p _{FWE-corr}	q _{FDR-corr}	k _E	p _{uncorr}	p _{FWE-corr}	q _{FDR-corr}	T	(Z _u)	p _{uncorr}			

no suprathreshold clusters

table shows 3 local maxima more than 8.0mm apart

Height threshold: T = 4.30, p = 0.001 (1.000)	Degrees of freedom = [1.0, 9.0]
Extent threshold: k = 0 voxels	FWHM = 9.4 10.5 11.0 mm mm mm; 3.1 3.5 3.7 {voxels}
Expected voxels per cluster, <k> = 1.935	Volume: 1294110 = 47930 voxels = 1070.5 resels
Expected number of clusters, <c> = 25.84	Voxel size: 3.0 3.0 3.0 mm mm mm; (resel = 40.23 voxels)
FWEp: 10.666, FDRp: Inf, FWEc: Inf, FDRc: Inf	

SYN x 2back x LD decreases, 60 mg only, 5p7mm



Statistics: p-values adjusted for search volume

set-level		cluster-level			peak-level					mm	mm	mm	
p	c	p _{FWE-corr}	q _{FDR-corr}	k _E	p _{uncorr}	p _{FWE-corr}	q _{FDR-corr}	T	(Z _≡)	p _{uncorr}			

no suprathreshold clusters

table shows 3 local maxima more than 8.0mm apart

Height threshold: T = 4.30, p = 0.001 (1.000)	Degrees of freedom = [1.0, 9.0]
Extent threshold: k = 0 voxels	FWHM = 9.4 10.5 11.0 mm mm mm; 3.1 3.5 3.7 {voxels}
Expected voxels per cluster, <k> = 1.935	Volume: 1294110 = 47930 voxels = 1070.5 resels
Expected number of clusters, <c> = 25.84	Voxel size: 3.0 3.0 3.0 mm mm mm; (resel = 40.23 voxels)
FWEp: 10.666, FDRp: Inf, FWEc: Inf, FDRc: Inf	