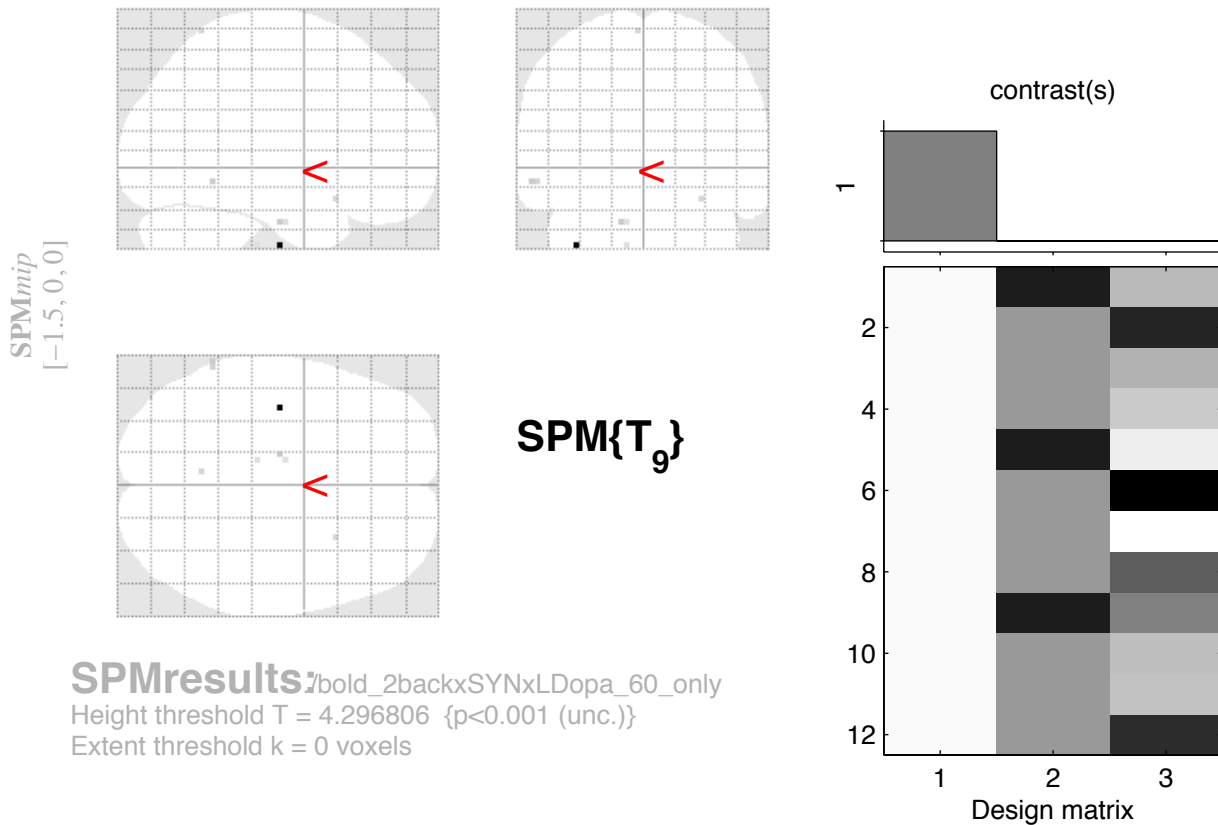


BOLD 2backxSYNxLDopa increases 60 mg only



SPMresults: bold_2backxSYNxLDopa_60_only
 Height threshold T = 4.296806 {p<0.001 (unc.)}
 Extent threshold k = 0 voxels

Statistics: p-values adjusted for search volume

set-level		cluster-level			peak-level					mm mm mm			
p	c	$p_{\text{FWE-corr}}$	$q_{\text{FDR-corr}}$	k_E	p_{uncorr}	$p_{\text{FWE-corr}}$	$q_{\text{FDR-corr}}$	T	$(Z_{\text{=}})$	p_{uncorr}			
1.000	6	1.000	0.390	1	0.390	0.999	0.890	6.83	3.96	0.000	-38	-15	-42
		1.000	0.390	2	0.224	1.000	0.921	4.60	3.22	0.001	-62	-51	-9
		1.000	0.390	2	0.224	1.000	0.921	4.60	3.22	0.001	-14	-15	-30
		1.000	0.390	1	0.390	1.000	0.921	4.50	3.18	0.001	-4	-57	69
		1.000	0.390	1	0.390	1.000	0.921	4.48	3.17	0.001	28	15	-18
		1.000	0.390	1	0.390	1.000	0.921	4.40	3.14	0.001	-10	-27	-42

table shows 3 local maxima more than 8.0mm apart

Height threshold: T = 4.30, p = 0.001 (1.000)

Extent threshold: k = 0 voxels

Expected voxels per cluster, <k> = 1.455

Expected number of clusters, <c> = 44.20

FWEp: 11.012, FDRp: Inf, FWEc: Inf, FDRc: Inf

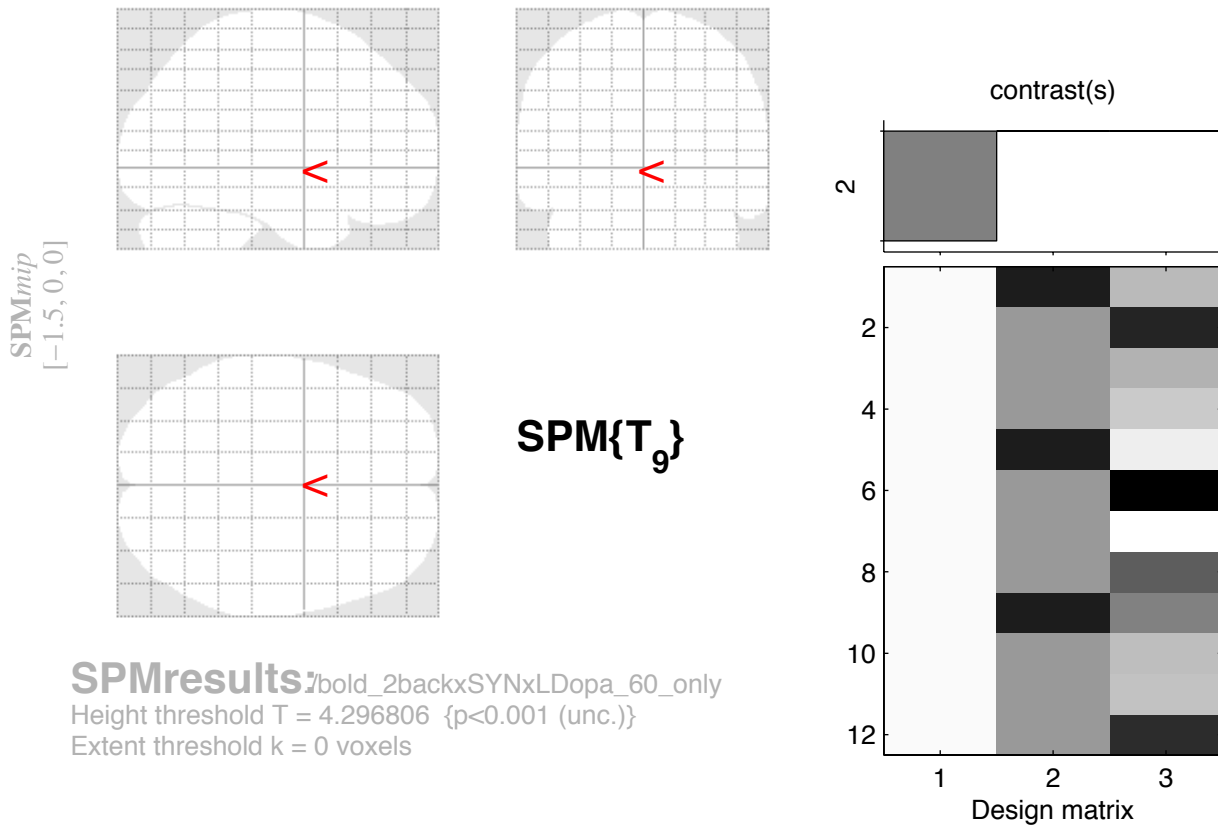
Degrees of freedom = [1.0, 9.0]

FWHM = 9.9 10.1 8.2 mm mm mm; 3.3 3.4 2.7 {voxels}

Volume: 1692981 = 62703 voxels = 1876.3 resels

Voxel size: 3.0 3.0 3.0 mm mm mm; (resel = 30.25 voxels)

BOLD 2backxSYNxLDopa decreases 60 mg only



SPMresults: bold_2backxSYNxLDopa_60_only
 Height threshold T = 4.296806 {p<0.001 (unc.)}
 Extent threshold k = 0 voxels

Statistics: p-values adjusted for search volume

set-level		cluster-level			peak-level					mm	mm	mm	
p	c	p _{FWE-corr}	q _{FDR-corr}	k _E	p _{uncorr}	p _{FWE-corr}	q _{FDR-corr}	T	(Z _≡)	p _{uncorr}			

no suprathreshold clusters

table shows 3 local maxima more than 8.0mm apart

Height threshold: T = 4.30, p = 0.001 (1.000)	Degrees of freedom = [1.0, 9.0]
Extent threshold: k = 0 voxels	FWHM = 9.9 10.1 8.2 mm mm mm; 3.3 3.4 2.7 {voxels}
Expected voxels per cluster, <k> = 1.455	Volume: 1692981 = 62703 voxels = 1876.3 resels
Expected number of clusters, <c> = 44.20	Voxel size: 3.0 3.0 3.0 mm mm mm; (resel = 30.25 voxels)
FWEp: 11.012, FDRp: Inf, FWEc: Inf, FDRc: Inf	