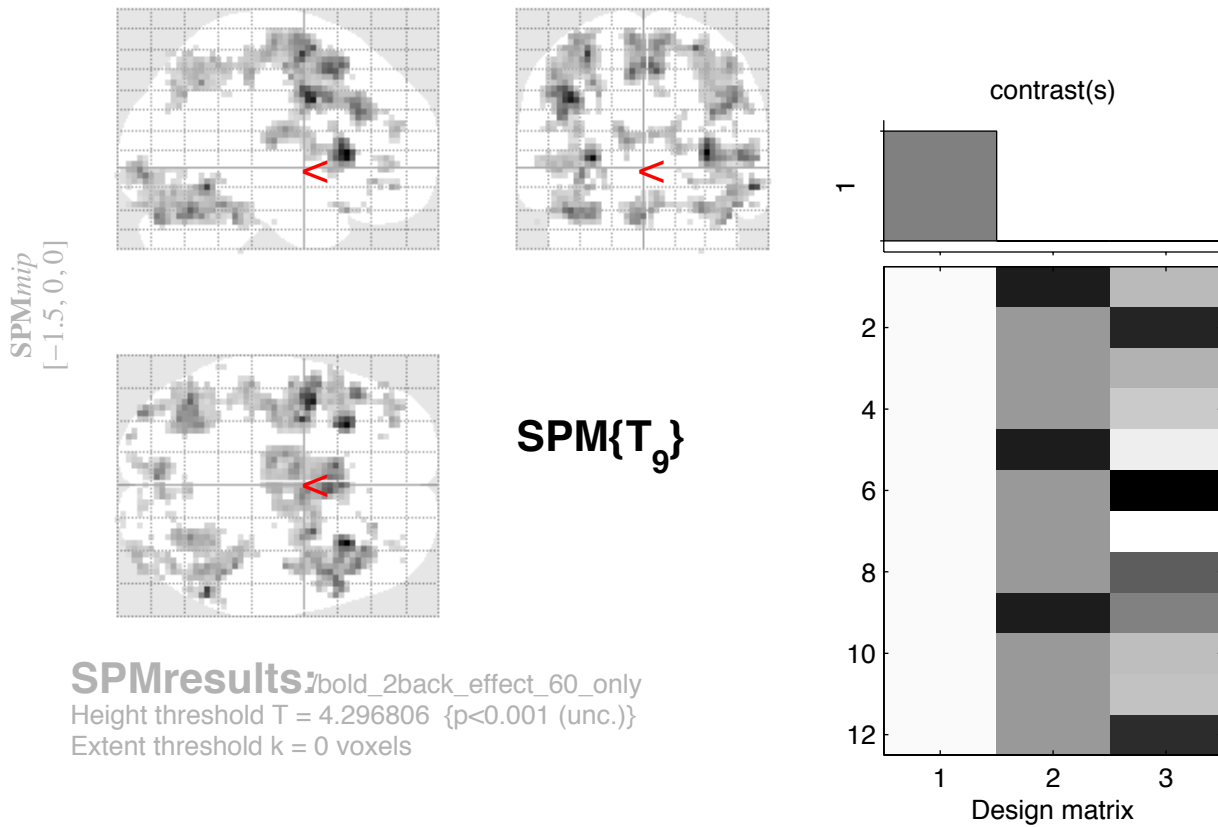


A BOLD 2 back effect increases 60 mg only



Statistics: p-values adjusted for search volume

set-level		cluster-level			peak-level					mm mm mm			
p	c	$p_{FWE-corr}$	$q_{FDR-corr}$	k_E	p_{uncorr}	$p_{FWE-corr}$	$q_{FDR-corr}$	T	(Z_{max})	p_{uncorr}			
0.001	48	0.000	0.000	142	0.000	0.009	0.310	13.42	5.13	0.000	32	21	6
						0.288	0.404	8.92	4.44	0.000	50	15	3
		0.000	0.000	127	0.000	0.013	0.310	12.94	5.07	0.000	-28	21	3
						0.998	0.522	6.29	3.80	0.000	-46	12	-3
						0.999	0.522	6.23	3.78	0.000	-40	18	0
		0.000	0.000	515	0.000	0.020	0.310	12.29	4.98	0.000	-40	3	33
						0.056	0.389	10.87	4.78	0.000	-32	-3	57
						0.245	0.404	9.10	4.47	0.000	-44	27	27
		0.000	0.000	327	0.000	0.061	0.389	10.75	4.76	0.000	56	-54	-12
						0.681	0.404	8.02	4.25	0.000	44	-39	-27
						0.717	0.404	7.97	4.23	0.000	28	-63	-24
		0.000	0.000	471	0.000	0.132	0.404	9.80	4.60	0.000	4	12	48
						0.160	0.404	9.58	4.56	0.000	26	3	60
						0.166	0.404	9.54	4.55	0.000	-8	15	48
		0.000	0.000	224	0.000	0.187	0.404	9.40	4.53	0.000	-40	-63	-24
						0.544	0.404	8.25	4.30	0.000	-34	-87	-6
						0.643	0.404	8.08	4.26	0.000	-32	-69	-27
		0.000	0.000	223	0.000	0.344	0.404	8.73	4.40	0.000	44	27	30
						0.379	0.404	8.62	4.38	0.000	46	12	33
						0.424	0.404	8.51	4.35	0.000	34	30	27
		0.000	0.000	108	0.000	0.466	0.404	8.41	4.33	0.000	-2	-81	-27
						0.996	0.522	6.47	3.86	0.000	8	-78	-21
						0.999	0.524	6.09	3.74	0.000	-8	-87	-21
		0.003	0.000	47	0.000	0.909	0.404	7.69	4.17	0.000	-28	-57	42

table shows 3 local maxima more than 8.0mm apart

Height threshold: T = 4.30, p = 0.001 (1.000)

Extent threshold: k = 0 voxels

Expected voxels per cluster, <k> = 2.250

Expected number of clusters, <c> = 29.13

FWEp: 11.012, FDRp: Inf, FWEc: 47, FDRc: 22

Degrees of freedom = [1.0, 9.0]

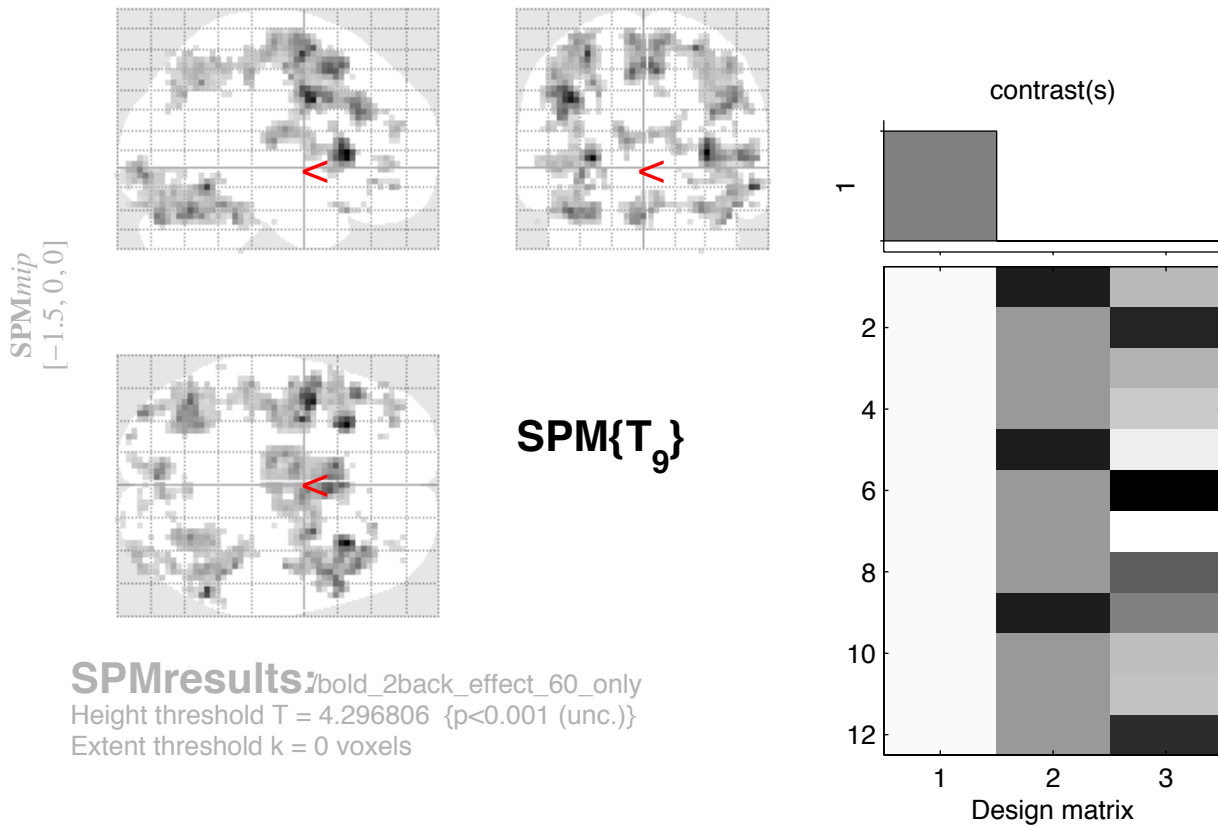
FWHM = 10.9 11.3 10.3 mm mm mm; 3.6 3.8 3.4 {voxels}

Volume: 1692981 = 62703 voxels = 1213.8 resels

Voxel size: 3.0 3.0 3.0 mm mm mm; (resel = 46.77 voxels)

Page 1

BOLD 2 back effect increases 60 mg only



SPMresults:bold_2back_effect_60_only
 Height threshold T = 4.296806 {p<0.001 (unc.)}
 Extent threshold k = 0 voxels

Statistics: p-values adjusted for search volume

set-level		cluster-level			peak-level					mm mm mm			
p	c	$p_{FWE-corr}$	$q_{FDR-corr}$	k_E	p_{uncorr}	$p_{FWE-corr}$	$q_{FDR-corr}$	T	(Z_{max})	p_{uncorr}			
						0.990	0.522	6.72	3.93	0.000	-26	-66	36
						0.999	0.522	6.14	3.76	0.000	-28	-72	42
		0.000	0.000	166	0.000	0.932	0.432	7.53	4.13	0.000	-10	-18	12
						0.952	0.436	7.34	4.09	0.000	-14	-12	18
						0.996	0.522	6.44	3.85	0.000	16	3	9
		0.517	0.086	12	0.025	0.971	0.487	7.11	4.03	0.000	2	21	-24
		0.942	0.247	6	0.098	0.989	0.522	6.77	3.94	0.000	-32	45	-12
		0.942	0.247	6	0.098	0.997	0.522	6.40	3.83	0.000	22	36	-9
		0.000	0.000	163	0.000	0.997	0.522	6.38	3.83	0.000	44	-48	51
						0.998	0.522	6.28	3.80	0.000	32	-57	51
						1.000	0.586	5.86	3.67	0.000	32	-66	48
		0.109	0.016	22	0.004	0.998	0.522	6.30	3.81	0.000	-38	48	18
						1.000	0.728	5.10	3.41	0.000	-34	42	27
		0.891	0.228	7	0.076	0.999	0.522	6.15	3.76	0.000	-22	-96	-3
		0.386	0.062	14	0.017	1.000	0.605	5.80	3.65	0.000	-44	42	3
		0.999	0.370	3	0.231	1.000	0.612	5.76	3.64	0.000	-50	42	-3
		0.750	0.152	9	0.048	1.000	0.643	5.49	3.55	0.000	-52	15	18
		0.976	0.292	5	0.128	1.000	0.703	5.27	3.47	0.000	-44	-51	48
		0.999	0.370	3	0.231	1.000	0.707	5.24	3.46	0.000	46	15	21
		0.993	0.339	4	0.170	1.000	0.728	5.17	3.44	0.000	-10	0	3
		0.999	0.370	3	0.231	1.000	0.728	5.09	3.41	0.000	-50	-54	-15
		0.999	0.370	3	0.231	1.000	0.728	5.06	3.40	0.000	-22	39	-12
		0.942	0.247	6	0.098	1.000	0.731	5.04	3.39	0.000	32	45	21
		1.000	0.495	1	0.495	1.000	0.813	4.86	3.32	0.000	-44	33	-15

table shows 3 local maxima more than 8.0mm apart

Height threshold: T = 4.30, p = 0.001 (1.000)

Extent threshold: k = 0 voxels

Expected voxels per cluster, <k> = 2.250

Expected number of clusters, <c> = 29.13

FWEp: 11.012, FDRp: Inf, FWEc: 47, FDRc: 22

Degrees of freedom = [1.0, 9.0]

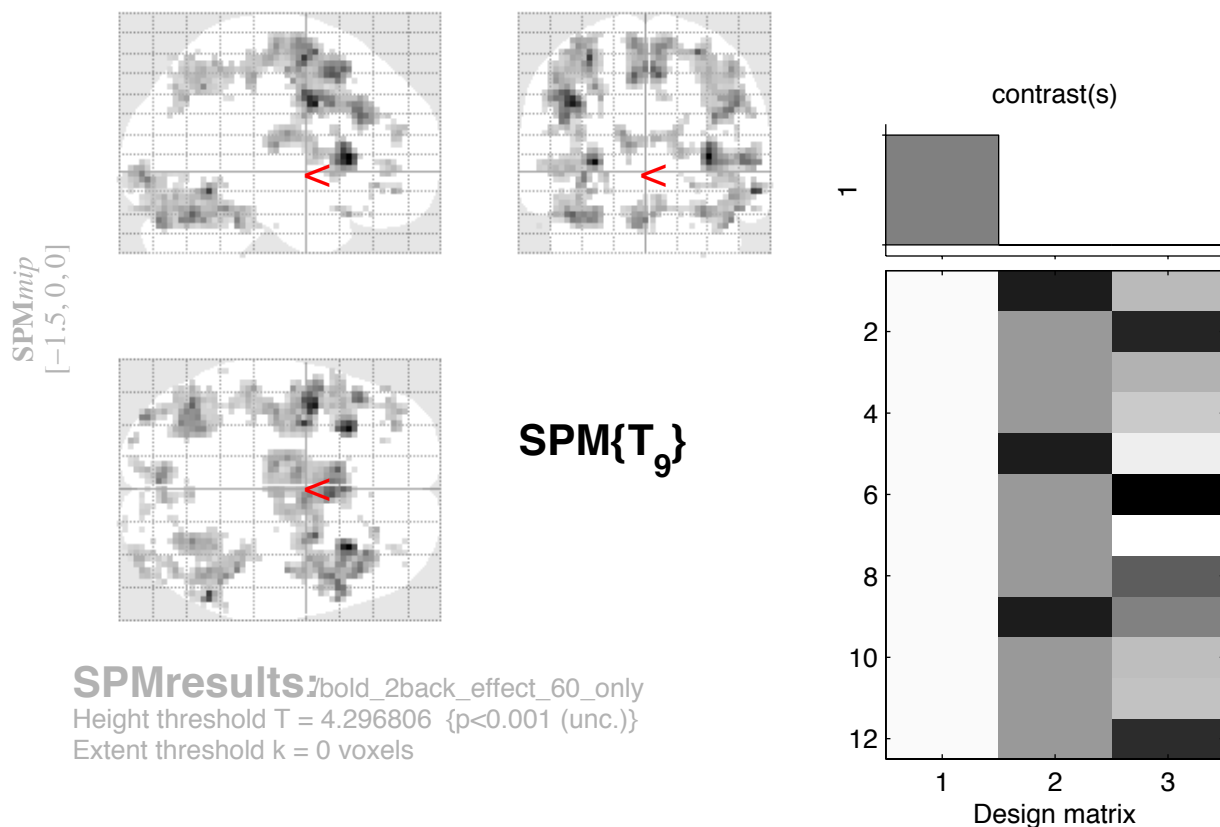
FWHM = 10.9 11.3 10.3 mm mm mm; 3.6 3.8 3.4 {voxels}

Volume: 1692981 = 62703 voxels = 1213.8 resels

Voxel size: 3.0 3.0 3.0 mm mm mm; (resel = 46.77 voxels)

Page 2

BOLD 2 back effect increases 60 mg only



SPMresults:bold_2back_effect_60_only
 Height threshold T = 4.296806 {p<0.001 (unc.)}
 Extent threshold k = 0 voxels

Statistics: p-values adjusted for search volume

set-level		cluster-level			peak-level					mm mm mm			
p	c	$p_{\text{FWE-corr}}$	$q_{\text{FDR-corr}}$	k_E	p_{uncorr}	$p_{\text{FWE-corr}}$	$q_{\text{FDR-corr}}$	T	(Z_{e})	p_{uncorr}			
0.999		0.370		3	0.231	1.000	0.813	4.85	3.32	0.000	20	-72	57
1.000		0.495		1	0.495	1.000	0.827	4.82	3.30	0.000	28	-84	-18
1.000		0.495		1	0.495	1.000	0.837	4.79	3.29	0.000	4	33	-24
0.999		0.370		3	0.231	1.000	0.837	4.77	3.28	0.001	-34	-30	-27
1.000		0.476		2	0.327	1.000	0.849	4.73	3.27	0.001	-26	-75	27
0.993		0.339		4	0.170	1.000	0.854	4.71	3.26	0.001	8	-72	48
1.000		0.476		2	0.327	1.000	0.858	4.69	3.25	0.001	-40	-66	-3
1.000		0.495		1	0.495	1.000	0.862	4.67	3.25	0.001	16	27	-24
0.976		0.292		5	0.128	1.000	0.877	4.64	3.24	0.001	-40	-48	39
1.000		0.495		1	0.495	1.000	0.891	4.59	3.21	0.001	-14	21	-24
1.000		0.476		2	0.327	1.000	0.905	4.55	3.20	0.001	-58	-45	-30
1.000		0.495		1	0.495	1.000	0.914	4.53	3.19	0.001	20	30	-21
1.000		0.495		1	0.495	1.000	0.915	4.51	3.18	0.001	40	51	18
1.000		0.495		1	0.495	1.000	0.918	4.49	3.17	0.001	28	51	18
0.993		0.339		4	0.170	1.000	0.937	4.44	3.15	0.001	20	-99	-6
1.000		0.495		1	0.495	1.000	0.937	4.44	3.15	0.001	-8	24	45
1.000		0.495		1	0.495	1.000	0.949	4.41	3.14	0.001	-34	-60	60
1.000		0.495		1	0.495	1.000	0.949	4.40	3.14	0.001	-20	-96	-12
1.000		0.495		1	0.495	1.000	0.962	4.37	3.12	0.001	22	-90	-21
1.000		0.495		1	0.495	1.000	0.971	4.35	3.11	0.001	-32	48	12
1.000		0.495		1	0.495	1.000	0.978	4.33	3.10	0.001	22	-18	-30
1.000		0.495		1	0.495	1.000	0.978	4.33	3.10	0.001	28	-36	-45

table shows 3 local maxima more than 8.0mm apart

Height threshold: T = 4.30, p = 0.001 (1.000)

Extent threshold: k = 0 voxels

Expected voxels per cluster, <k> = 2.250

Expected number of clusters, <c> = 29.13

FWEp: 11.012, FDRp: Inf, FWEc: 47, FDRc: 22

Degrees of freedom = [1.0, 9.0]

FWHM = 10.9 11.3 10.3 mm mm mm; 3.6 3.8 3.4 {voxels}

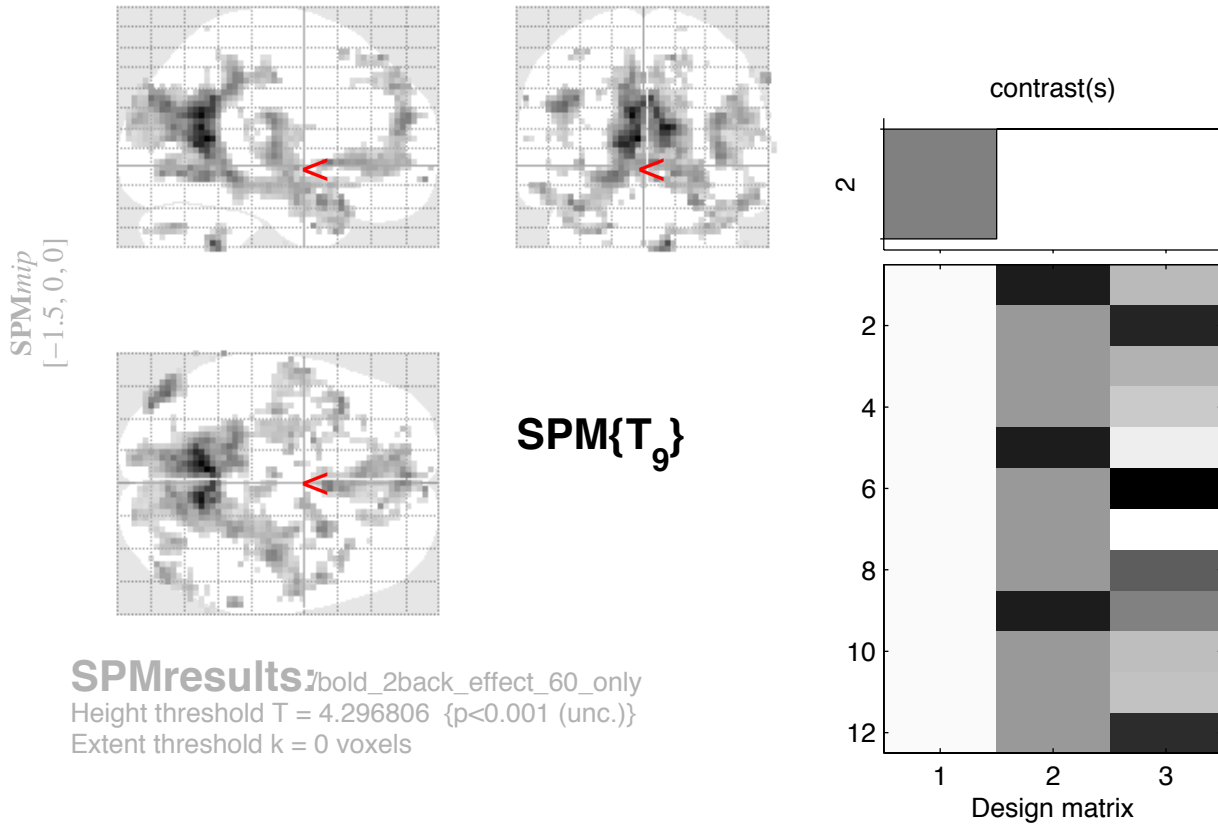
Volume: 1692981 = 62703 voxels = 1213.8 resels

Voxel size: 3.0 3.0 3.0 mm mm mm; (resel = 46.77 voxels)

Page 3/3

B

BOLD 2 back effect decreases 60 mg



SPMresults: bold_2back_effect_60_only
 Height threshold $T = 4.296806$ { $p < 0.001$ (unc.)}
 Extent threshold $k = 0$ voxels

Statistics: p -values adjusted for search volume

set-level		cluster-level				peak-level					mm mm mm		
p	c	$p_{\text{FWE-corr}}$	$q_{\text{FDR-corr}}$	k_E	p_{uncorr}	$p_{\text{FWE-corr}}$	$q_{\text{FDR-corr}}$	T	(Z_{e})	p_{uncorr}			
0.000	52	0.000	0.000	2142	0.000	0.015	0.441	12.70	5.04	0.000	-4	-54	12
						0.020	0.441	12.25	4.98	0.000	-8	-57	24
						0.025	0.441	11.96	4.94	0.000	10	-57	18
		0.003	0.001	46	0.000	0.140	0.541	9.74	4.59	0.000	10	-51	-42
						1.000	0.595	5.88	3.68	0.000	14	-45	-36
		0.000	0.000	132	0.000	0.327	0.541	8.78	4.41	0.000	-44	-75	30
						0.525	0.541	8.28	4.30	0.000	-38	-84	33
						1.000	0.740	5.13	3.42	0.000	-44	-87	12
		0.000	0.000	507	0.000	0.671	0.541	8.03	4.25	0.000	4	12	0
						0.776	0.541	7.89	4.22	0.000	-2	54	24
						0.980	0.541	6.97	3.99	0.000	-10	45	39
		0.000	0.000	360	0.000	0.883	0.541	7.76	4.19	0.000	38	-18	21
						0.911	0.541	7.69	4.17	0.000	38	-18	3
						0.972	0.541	7.10	4.03	0.000	50	6	-21
		0.001	0.000	59	0.000	0.926	0.541	7.57	4.14	0.000	26	6	-21
						0.999	0.585	6.24	3.79	0.000	14	0	-12
						0.999	0.585	6.16	3.76	0.000	22	12	-12
		0.037	0.006	29	0.001	0.966	0.541	7.18	4.05	0.000	14	39	54
						1.000	0.638	5.66	3.61	0.000	20	30	54
		0.891	0.264	7	0.076	0.968	0.541	7.15	4.04	0.000	4	63	-9
		0.825	0.222	8	0.060	0.974	0.541	7.06	4.02	0.000	-20	3	-33
						1.000	0.833	4.83	3.31	0.000	-28	6	-36
		0.750	0.190	9	0.048	0.983	0.541	6.91	3.98	0.000	64	-39	42
		0.000	0.000	65	0.000	0.987	0.541	6.81	3.95	0.000	-56	0	-15

table shows 3 local maxima more than 8.0mm apart

Height threshold: $T = 4.30$, $p = 0.001$ (1.000)

Extent threshold: $k = 0$ voxels

Expected voxels per cluster, $\langle k \rangle = 2.250$

Expected number of clusters, $\langle c \rangle = 29.13$

FWEp: 11.012, FDRp: Inf, FWEc: 29, FDRc: 29

Degrees of freedom = [1.0, 9.0]

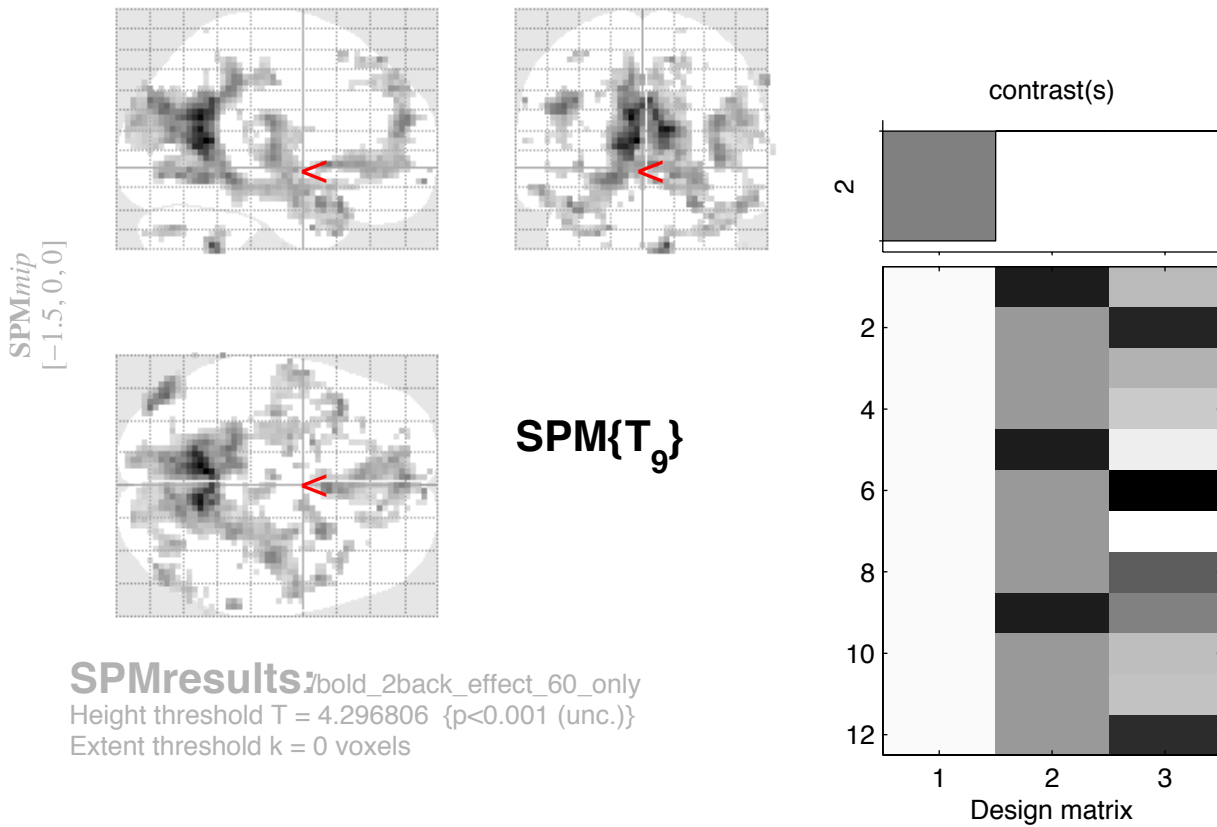
FWHM = 10.9 11.3 10.3 mm mm mm; 3.6 3.8 3.4 {voxels}

Volume: 1692981 = 62703 voxels = 1213.8 resels

Voxel size: 3.0 3.0 3.0 mm mm mm; (resel = 46.77 voxels)

Page 1

BOLD 2 back effect decreases 60 mg



SPMresults:bold_2back_effect_60_only
 Height threshold T = 4.296806 {p<0.001 (unc.)}
 Extent threshold k = 0 voxels

Statistics: p-values adjusted for search volume

set-level		cluster-level			peak-level					mm mm mm			
p	c	$p_{\text{FWE-corr}}$	$q_{\text{FDR-corr}}$	k_E	p_{uncorr}	$p_{\text{FWE-corr}}$	$q_{\text{FDR-corr}}$	T	(Z_{e})	p_{uncorr}			
						0.999	0.585	6.03	3.73	0.000	-62	-9	-12
						1.000	0.833	4.81	3.30	0.000	-50	6	-18
		0.000	0.000	104	0.000	0.990	0.541	6.72	3.93	0.000	52	-75	21
						0.991	0.541	6.70	3.92	0.000	46	-78	33
						1.000	0.606	5.84	3.67	0.000	56	-63	24
		1.000	0.486	2	0.327	0.990	0.541	6.72	3.92	0.000	-64	-45	33
		0.008	0.001	40	0.000	0.991	0.541	6.68	3.91	0.000	-34	-18	0
						1.000	0.761	5.04	3.39	0.000	-44	-15	-6
		0.006	0.001	42	0.000	0.995	0.541	6.50	3.87	0.000	32	-72	-33
						1.000	0.788	4.98	3.37	0.000	20	-87	-36
		0.942	0.282	6	0.098	1.000	0.607	5.81	3.65	0.000	-38	18	57
		0.993	0.367	4	0.170	1.000	0.672	5.55	3.57	0.000	-8	-6	-18
		0.942	0.282	6	0.098	1.000	0.672	5.52	3.56	0.000	-28	30	-6
		0.993	0.367	4	0.170	1.000	0.675	5.51	3.56	0.000	-26	51	36
		0.448	0.088	13	0.020	1.000	0.692	5.45	3.53	0.000	-16	6	-12
		1.000	0.486	2	0.327	1.000	0.721	5.31	3.49	0.000	44	-36	27
		0.993	0.367	4	0.170	1.000	0.732	5.24	3.46	0.000	-26	-72	-33
		1.000	0.495	1	0.495	1.000	0.732	5.22	3.46	0.000	-4	66	-3
		0.942	0.282	6	0.098	1.000	0.740	5.15	3.43	0.000	16	48	45
		0.993	0.367	4	0.170	1.000	0.740	5.14	3.43	0.000	16	-24	3
		0.999	0.429	3	0.231	1.000	0.755	5.08	3.41	0.000	-2	24	-12
		1.000	0.495	1	0.495	1.000	0.820	4.91	3.34	0.000	-64	-60	12
		0.976	0.349	5	0.128	1.000	0.820	4.90	3.34	0.000	34	3	18
		1.000	0.486	2	0.327	1.000	0.823	4.87	3.33	0.000	4	54	39

table shows 3 local maxima more than 8.0mm apart

Height threshold: T = 4.30, p = 0.001 (1.000)

Extent threshold: k = 0 voxels

Expected voxels per cluster, <k> = 2.250

Expected number of clusters, <c> = 29.13

FWEp: 11.012, FDRp: Inf, FWEc: 29, FDRc: 29

Degrees of freedom = [1.0, 9.0]

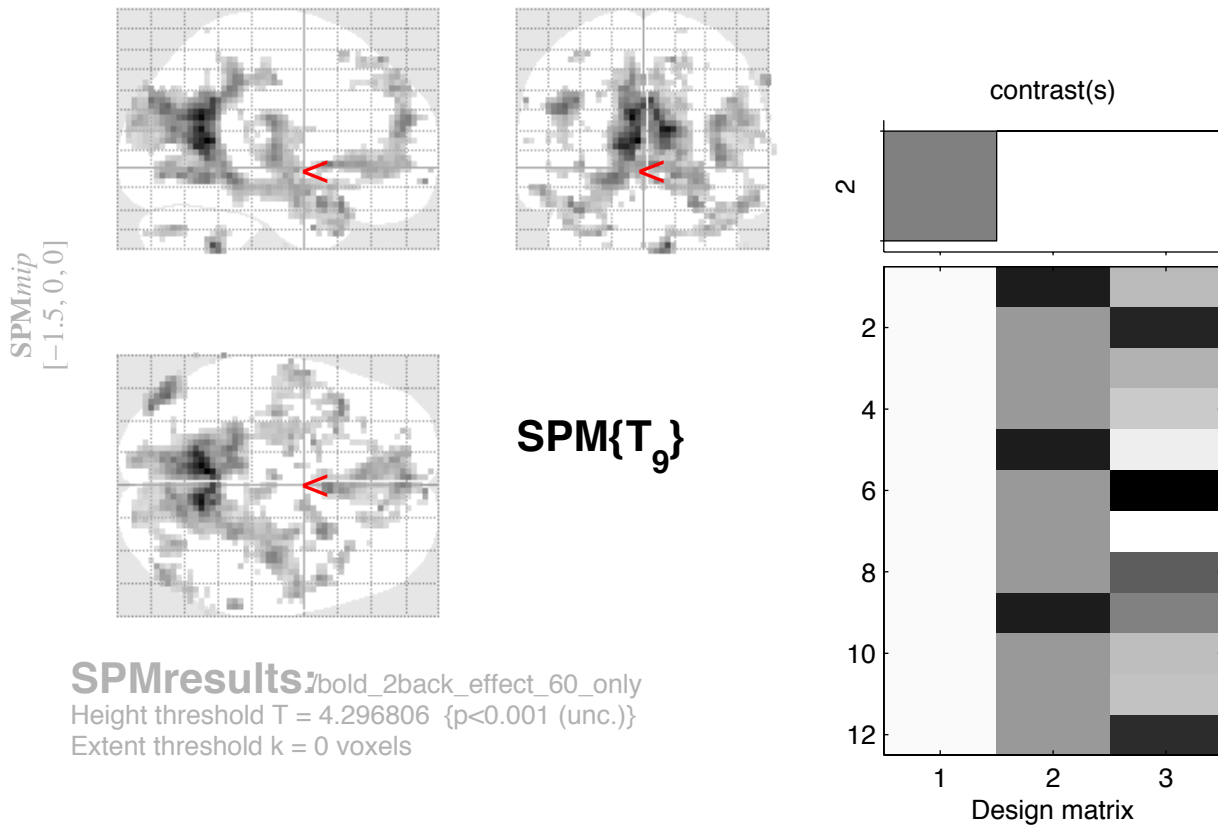
FWHM = 10.9 11.3 10.3 mm mm mm; 3.6 3.8 3.4 {voxels}

Volume: 1692981 = 62703 voxels = 1213.8 resels

Voxel size: 3.0 3.0 3.0 mm mm mm; (resel = 46.77 voxels)

Page 2

BOLD 2 back effect decreases 60 mg



Statistics: p-values adjusted for search volume

set-level		cluster-level			peak-level					mm mm mm			
p	c	$p_{\text{FWE-corr}}$	$q_{\text{FDR-corr}}$	k_E	p_{uncorr}	$p_{\text{FWE-corr}}$	$q_{\text{FDR-corr}}$	T	(Z_{e})	p_{uncorr}			
0.999	0.429	3	0.231	1.000	0.823	4.87	3.33	0.000	-52	-9	12		
0.993	0.367	4	0.170	1.000	0.844	4.75	3.28	0.001	-22	21	-12		
1.000	0.495	1	0.495	1.000	0.862	4.72	3.26	0.001	-14	-9	-21		
0.999	0.429	3	0.231	1.000	0.882	4.66	3.24	0.001	68	-54	6		
1.000	0.495	1	0.495	1.000	0.887	4.64	3.24	0.001	-38	-9	-27		
0.999	0.429	3	0.231	1.000	0.900	4.62	3.22	0.001	56	-54	48		
1.000	0.486	2	0.327	1.000	0.901	4.61	3.22	0.001	8	63	24		
1.000	0.486	2	0.327	1.000	0.906	4.59	3.21	0.001	-20	-48	-42		
1.000	0.495	1	0.495	1.000	0.906	4.58	3.21	0.001	62	-15	42		
1.000	0.495	1	0.495	1.000	0.915	4.55	3.20	0.001	14	54	42		
1.000	0.486	2	0.327	1.000	0.916	4.54	3.19	0.001	20	-54	69		
1.000	0.486	2	0.327	1.000	0.920	4.52	3.19	0.001	-34	-27	21		
1.000	0.495	1	0.495	1.000	0.932	4.49	3.17	0.001	28	9	-30		
1.000	0.495	1	0.495	1.000	0.960	4.43	3.15	0.001	-32	-30	18		
1.000	0.495	1	0.495	1.000	0.960	4.42	3.14	0.001	-62	-51	12		
1.000	0.495	1	0.495	1.000	0.968	4.40	3.13	0.001	-22	48	42		
1.000	0.495	1	0.495	1.000	0.968	4.38	3.13	0.001	-52	-66	15		
1.000	0.495	1	0.495	1.000	0.968	4.38	3.12	0.001	46	-27	15		
1.000	0.495	1	0.495	1.000	0.968	4.36	3.12	0.001	32	33	51		
1.000	0.495	1	0.495	1.000	0.968	4.36	3.12	0.001	52	-12	-42		
1.000	0.495	1	0.495	1.000	0.968	4.35	3.11	0.001	64	-57	24		
1.000	0.495	1	0.495	1.000	0.972	4.34	3.11	0.001	62	-57	33		
1.000	0.495	1	0.495	1.000	0.996	4.30	3.09	0.001	-22	9	-27		

table shows 3 local maxima more than 8.0mm apart

Height threshold: T = 4.30, p = 0.001 (1.000)

Extent threshold: k = 0 voxels

Expected voxels per cluster, <k> = 2.250

Expected number of clusters, <c> = 29.13

FWEp: 11.012, FDRp: Inf, FWEc: 29, FDRc: 29

Degrees of freedom = [1.0, 9.0]

FWHM = 10.9 11.3 10.3 mm mm mm; 3.6 3.8 3.4 {voxels}

Volume: 1692981 = 62703 voxels = 1213.8 resels

Voxel size: 3.0 3.0 3.0 mm mm mm; (resel = 46.77 voxels)

Page 3/3