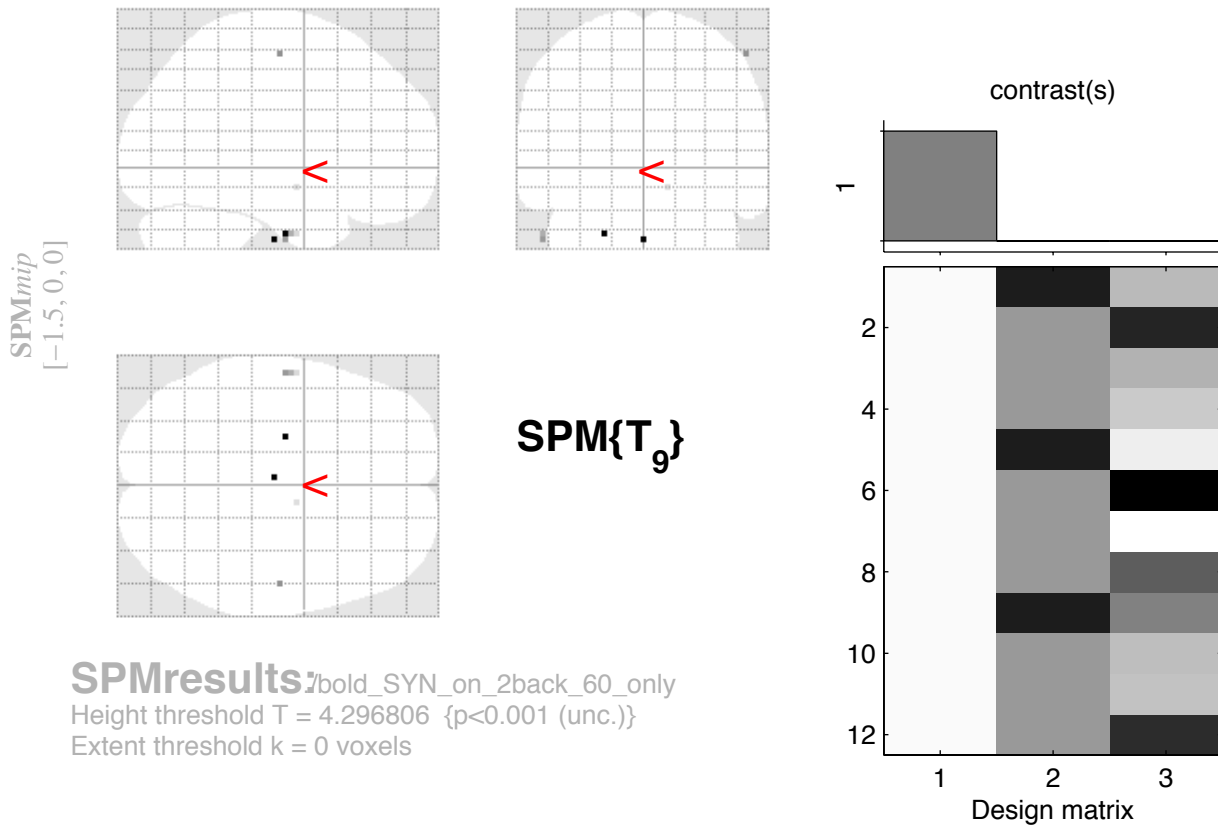


# BOLD SYN on 2back increases 60 mg only



**SPMresults:** bold\_SYN\_on\_2back\_60\_only  
 Height threshold T = 4.296806 {p<0.001 (unc.)}  
 Extent threshold k = 0 voxels

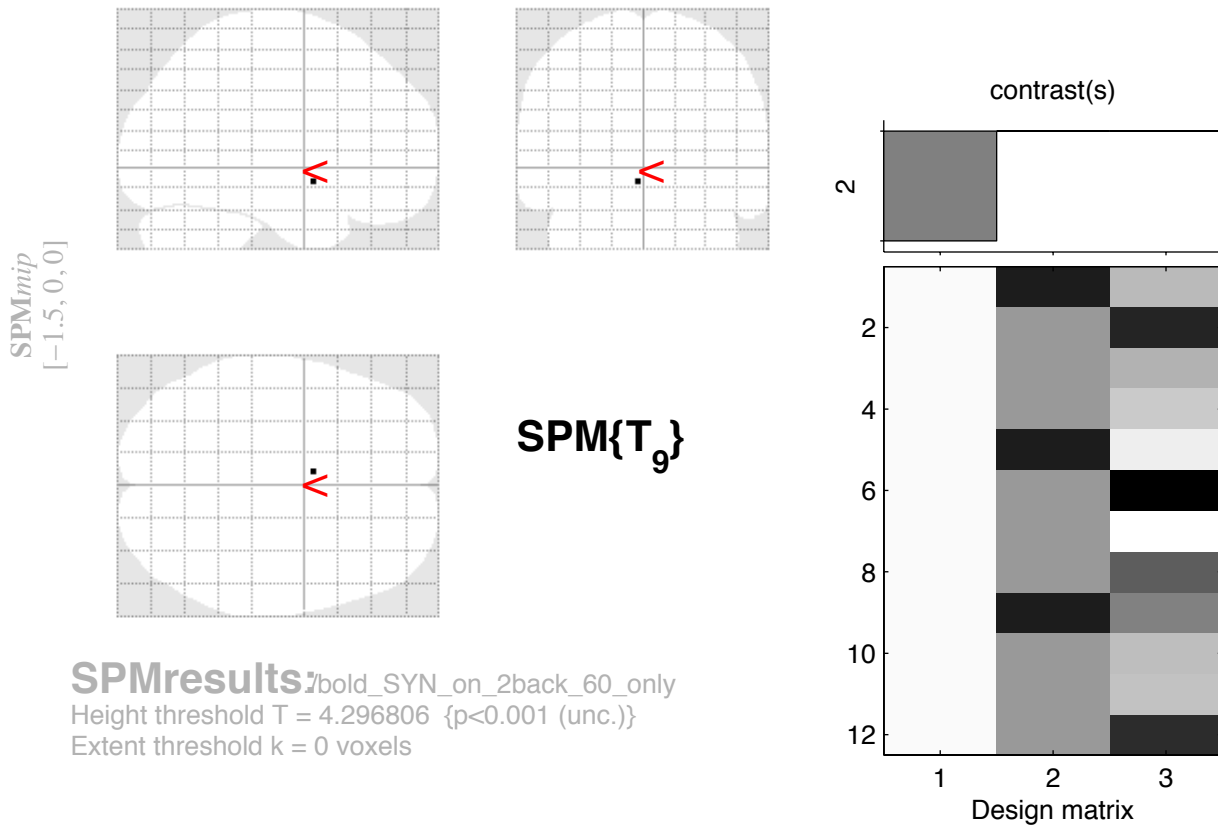
## Statistics: p-values adjusted for search volume

set-level		cluster-level			peak-level					mm mm mm			
$p$	$c$	$p_{\text{FWE-corr}}$	$q_{\text{FDR-corr}}$	$k_E$	$p_{\text{uncorr}}$	$p_{\text{FWE-corr}}$	$q_{\text{FDR-corr}}$	$T$	$(Z_{\text{=}})$	$p_{\text{uncorr}}$			
1.000	5	1.000	0.382	1	0.382	1.000	0.892	5.09	3.41	0.000	-2	-18	-39
		1.000	0.382	1	0.382	1.000	0.892	5.07	3.40	0.000	-22	-12	-36
		1.000	0.382	1	0.382	1.000	0.892	4.66	3.24	0.001	52	-15	57
		0.998	0.382	3	0.135	1.000	0.892	4.64	3.23	0.001	-56	-12	-39
		1.000	0.382	1	0.382	1.000	0.892	4.44	3.15	0.001	10	-6	-12

table shows 3 local maxima more than 8.0mm apart

Height threshold: T = 4.30, p = 0.001 (1.000)      Degrees of freedom = [1.0, 9.0]  
 Extent threshold: k = 0 voxels      FWHM = 9.5 10.0 8.3 mm mm mm; 3.2 3.3 2.8 {voxels}  
 Expected voxels per cluster, <k> = 1.411      Volume: 1692981 = 62703 voxels = 1935.4 resels  
 Expected number of clusters, <c> = 45.53      Voxel size: 3.0 3.0 3.0 mm mm mm; (resel = 29.33 voxels)  
 FWEp: 11.012, FDRp: Inf, FWEc: Inf, FDRc: Inf

# BOLD SYN on 2 back decreases 60 mg only



**SPMresults:** bold\_SYN\_on\_2back\_60\_only  
 Height threshold T = 4.296806 {p<0.001 (unc.)}  
 Extent threshold k = 0 voxels

## Statistics: p-values adjusted for search volume

cluster-level				peak-level					mm mm mm		
$p_{\text{FWE-corr}}$	$q_{\text{FDR-corr}}$	$k_E$	$p_{\text{uncorr}}$	$p_{\text{FWE-corr}}$	$q_{\text{FDR-corr}}$	$T$	$(Z_{\text{e}})$	$p_{\text{uncorr}}$			
1.000	0.382	1	0.382	1.000	0.629	4.89	3.33	0.000	-4	3	-9

table shows 3 local maxima more than 8.0mm apart

Height threshold: T = 4.30, p = 0.001 (1.000)      Degrees of freedom = [1.0, 9.0]  
 Extent threshold: k = 0 voxels      FWHM = 9.5 10.0 8.3 mm mm mm; 3.2 3.3 2.8 {voxels}  
 Expected voxels per cluster, <k> = 1.411      Volume: 1692981 = 62703 voxels = 1935.4 resels  
 Expected number of clusters, <c> = 45.53      Voxel size: 3.0 3.0 3.0 mm mm mm; (resel = 29.33 voxels)  
 FWEp: 11.012, FDRp: Inf, FWEc: Inf, FDRc: Inf