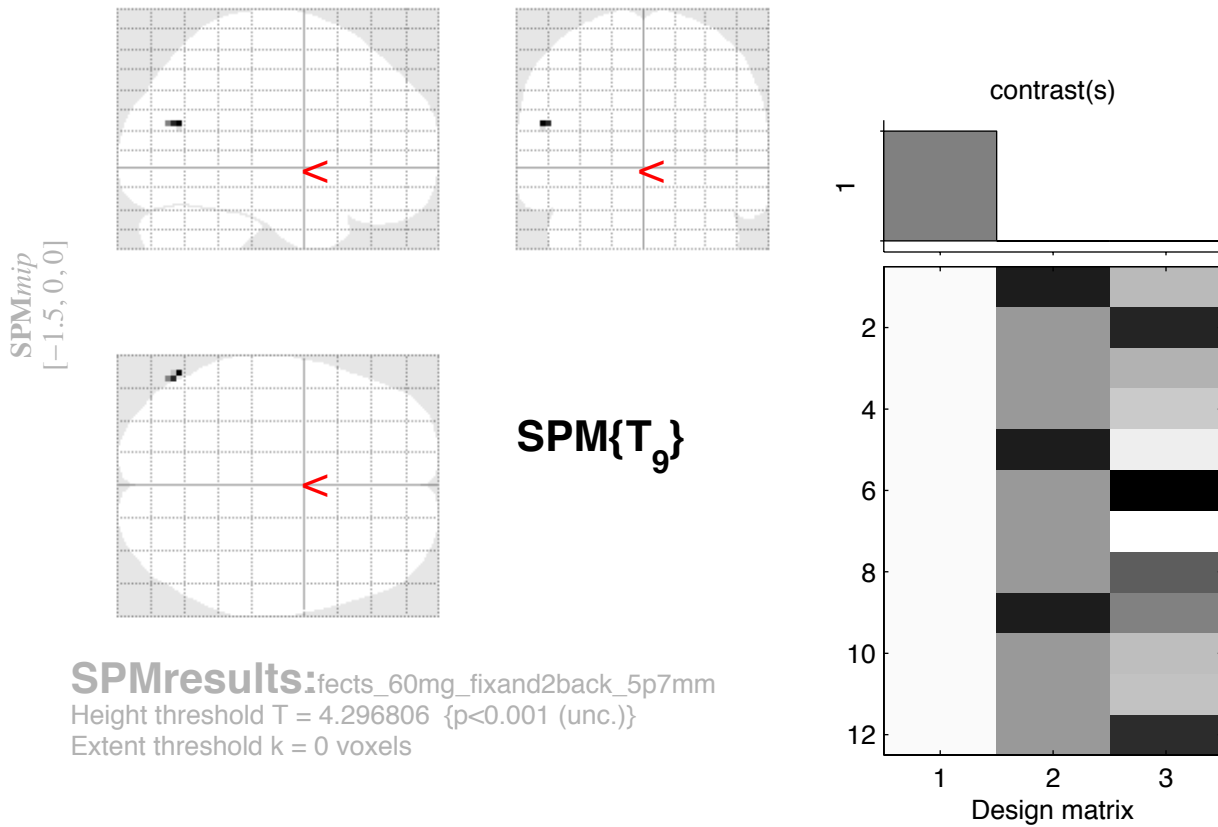


# LD increase (pbo and SYN day), 12 subs, 5p7



**SPMresults:**fects\_60mg\_fixand2back\_5p7mm  
 Height threshold  $T = 4.296806$  { $p < 0.001$  (unc.)}  
 Extent threshold  $k = 0$  voxels

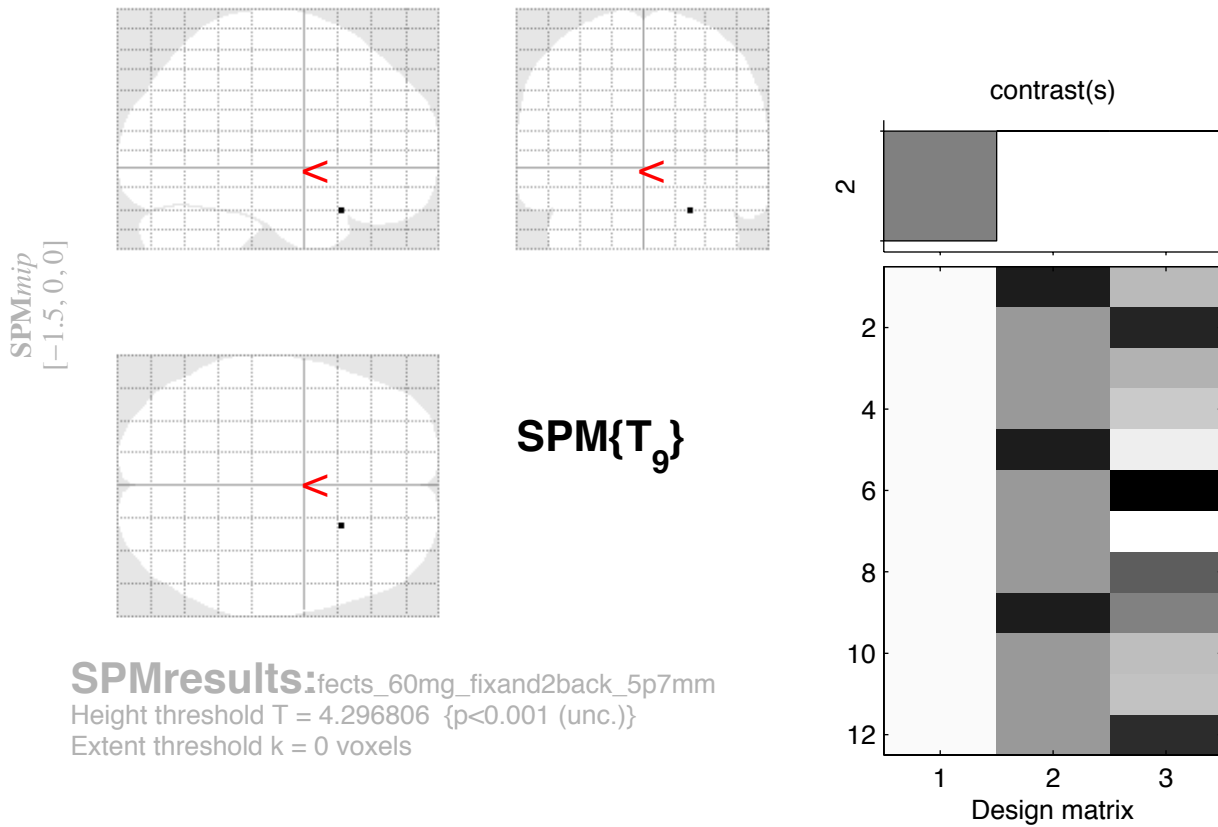
## Statistics: $p$ -values adjusted for search volume

cluster-level				peak-level					mm mm mm		
$p_{FWE-corr}$	$q_{FDR-corr}$	$k_E$	$p_{uncorr}$	$p_{FWE-corr}$	$q_{FDR-corr}$	$T$	$(Z_{\text{max}})$	$p_{uncorr}$			
0.905	0.077	5	0.077	1.000	0.538	5.08	3.41	0.000	-56	-69	21

table shows 3 local maxima more than 8.0mm apart

Height threshold:  $T = 4.30$ ,  $p = 0.001$  (1.000)      Degrees of freedom = [1.0, 9.0]  
 Extent threshold:  $k = 0$  voxels      FWHM = 9.1 10.4 9.7 mm mm mm; 3.0 3.5 3.2 {voxels}  
 Expected voxels per cluster,  $\langle k \rangle = 1.617$       Volume: 1294110 = 47930 voxels = 1281.4 resels  
 Expected number of clusters,  $\langle c \rangle = 30.62$       Voxel size: 3.0 3.0 3.0 mm mm mm; (resel = 33.61 voxels)  
 FWEp: 10.666, FDRp: Inf, FWEc: Inf, FDRc: Inf

# LD decreases (Pbo and SYN day), 12 sub



**SPMresults:**fects\_60mg\_fixand2back\_5p7mm  
 Height threshold T = 4.296806 {p<0.001 (unc.)}  
 Extent threshold k = 0 voxels

## Statistics: p-values adjusted for search volume

cluster-level				peak-level					mm mm mm		
$\rho_{\text{FWE-corr}}$	$q_{\text{FDR-corr}}$	$k_E$	$\rho_{\text{uncorr}}$	$\rho_{\text{FWE-corr}}$	$q_{\text{FDR-corr}}$	T	(Z <sub>u</sub> )	$\rho_{\text{uncorr}}$			
1.000	0.416	1	0.416	1.000	0.541	5.08	3.40	0.000	22	18	-24

table shows 3 local maxima more than 8.0mm apart

Height threshold: T = 4.30, p = 0.001 (1.000)      Degrees of freedom = [1.0, 9.0]  
 Extent threshold: k = 0 voxels      FWHM = 9.1 10.4 9.7 mm mm mm; 3.0 3.5 3.2 {voxels}  
 Expected voxels per cluster, <k> = 1.617      Volume: 1294110 = 47930 voxels = 1281.4 resels  
 Expected number of clusters, <c> = 30.62      Voxel size: 3.0 3.0 3.0 mm mm mm; (resel = 33.61 voxels)  
 FWEp: 10.666, FDRp: Inf, FWEc: Inf, FDRc: Inf