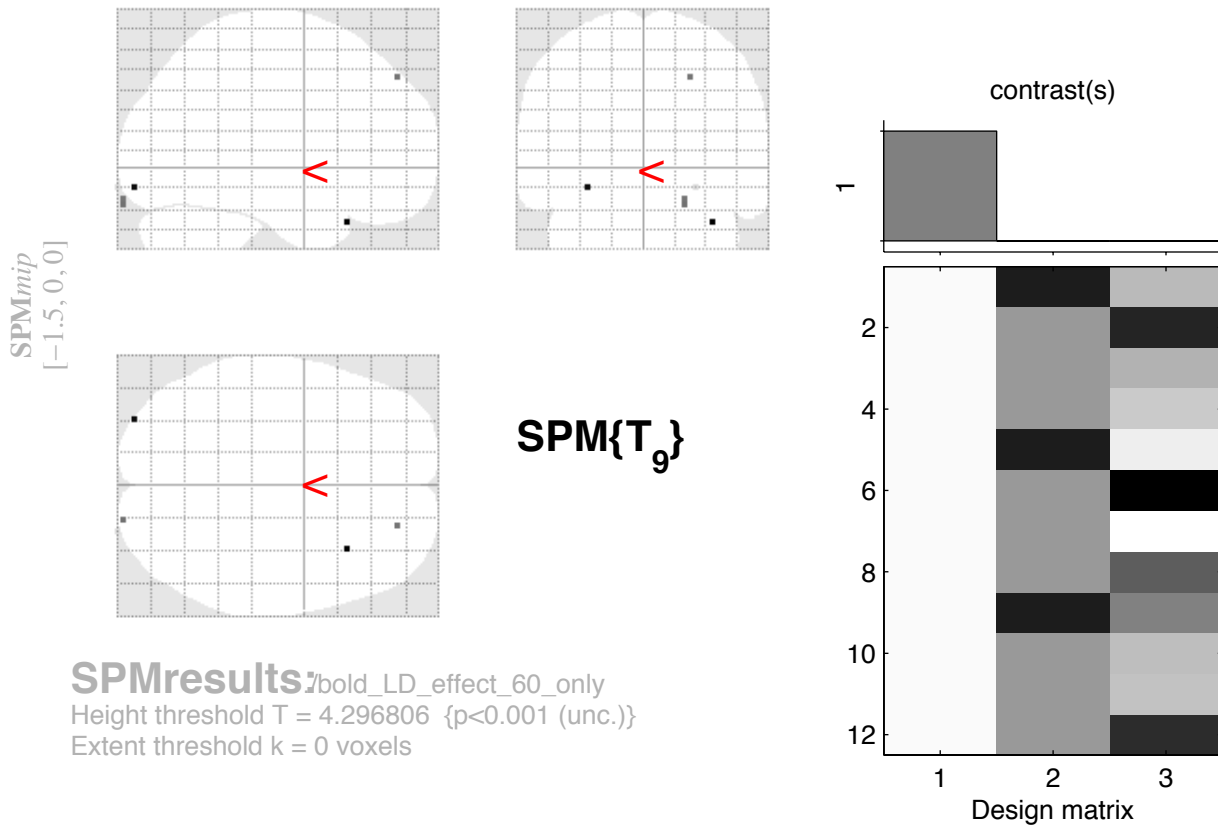


BOLD LD increases (pbo and drug days), 12 subs



SPMresults: bold_LD_effect_60_only
 Height threshold T = 4.296806 {p<0.001 (unc.)}
 Extent threshold k = 0 voxels

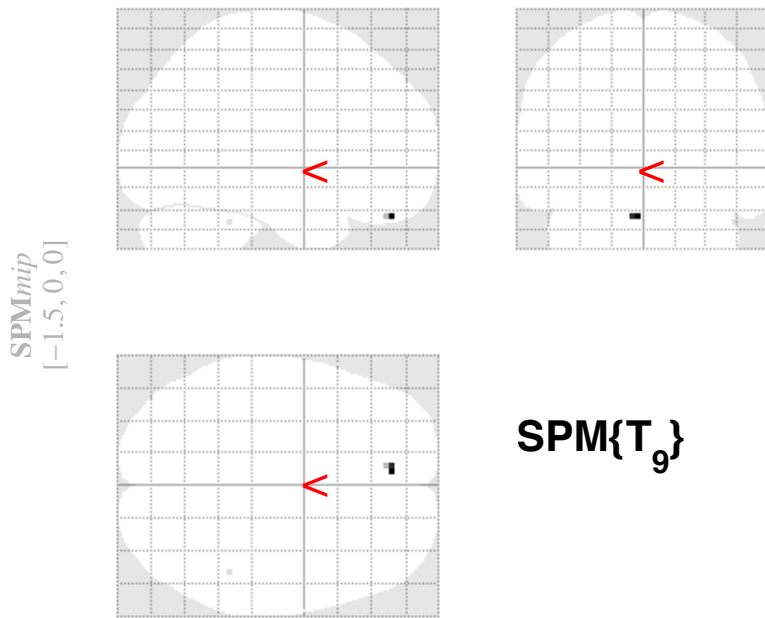
Statistics: p-values adjusted for search volume

set-level		cluster-level			peak-level					mm mm mm			
p	c	$p_{FWE-corr}$	$q_{FDR-corr}$	k_E	p_{uncorr}	$p_{FWE-corr}$	$q_{FDR-corr}$	T	(Z_{max})	p_{uncorr}			
1.000	5	1.000	0.400	1	0.400	1.000	0.883	5.21	3.45	0.000	34	21	-30
		1.000	0.400	1	0.400	1.000	0.883	5.14	3.43	0.000	-32	-93	-12
		1.000	0.400	2	0.233	1.000	0.883	4.74	3.27	0.001	20	-99	-21
		1.000	0.400	1	0.400	1.000	0.883	4.74	3.27	0.001	22	48	45
		1.000	0.400	1	0.400	1.000	0.987	4.31	3.10	0.001	26	-102	-12

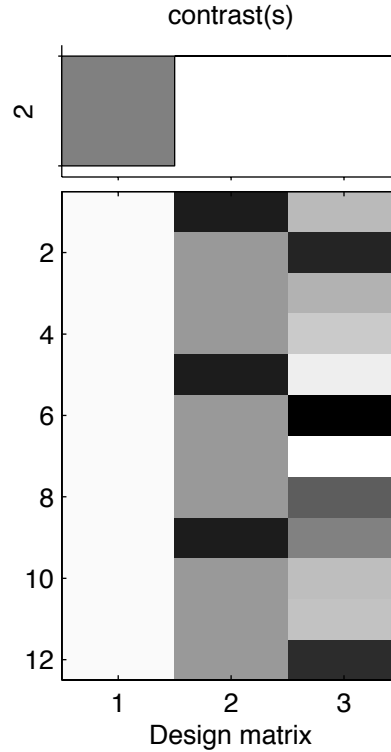
table shows 3 local maxima more than 8.0mm apart

Height threshold: T = 4.30, p = 0.001 (1.000) Degrees of freedom = [1.0, 9.0]
 Extent threshold: k = 0 voxels FWHM = 10.0 10.2 8.3 mm mm mm; 3.3 3.4 2.8 {voxels}
 Expected voxels per cluster, <k> = 1.514 Volume: 1692981 = 62703 voxels = 1804.1 resels
 Expected number of clusters, <c> = 42.57 Voxel size: 3.0 3.0 3.0 mm mm mm; (resel = 31.47 voxels)
 FWEp: 11.012, FDRp: Inf, FWEc: Inf, FDRc: Inf

BOLD LD decreases (pbo and drug days), 12 subs



SPMresults: bold_LD_effect_60_only
 Height threshold $T = 4.296806$ { $p < 0.001$ (unc.)}
 Extent threshold $k = 0$ voxels



Statistics: p -values adjusted for search volume

set-level		cluster-level			peak-level					mm mm mm			
p	c	$p_{\text{FWE-corr}}$	$q_{\text{FDR-corr}}$	k_E	p_{uncorr}	$p_{\text{FWE-corr}}$	$q_{\text{FDR-corr}}$	T	(Z_{e})	p_{uncorr}			
1.000	2	0.998	0.297	3	0.148	0.999	0.331	6.67	3.91	0.000	-4	45	-27
		1.000	0.400	1	0.400	1.000	0.946	4.37	3.12	0.001	46	-42	-30

table shows 3 local maxima more than 8.0mm apart

Height threshold: $T = 4.30$, $p = 0.001$ (1.000)

Extent threshold: $k = 0$ voxels

Expected voxels per cluster, $\langle k \rangle = 1.514$

Expected number of clusters, $\langle c \rangle = 42.57$

FWEp: 11.012, FDRp: Inf, FWEc: Inf, FDRc: Inf

Degrees of freedom = [1.0, 9.0]

FWHM = 10.0 10.2 8.3 mm mm mm; 3.3 3.4 2.8 {voxels}

Volume: 1692981 = 62703 voxels = 1804.1 resels

Voxel size: 3.0 3.0 3.0 mm mm mm; (resel = 31.47 voxels)