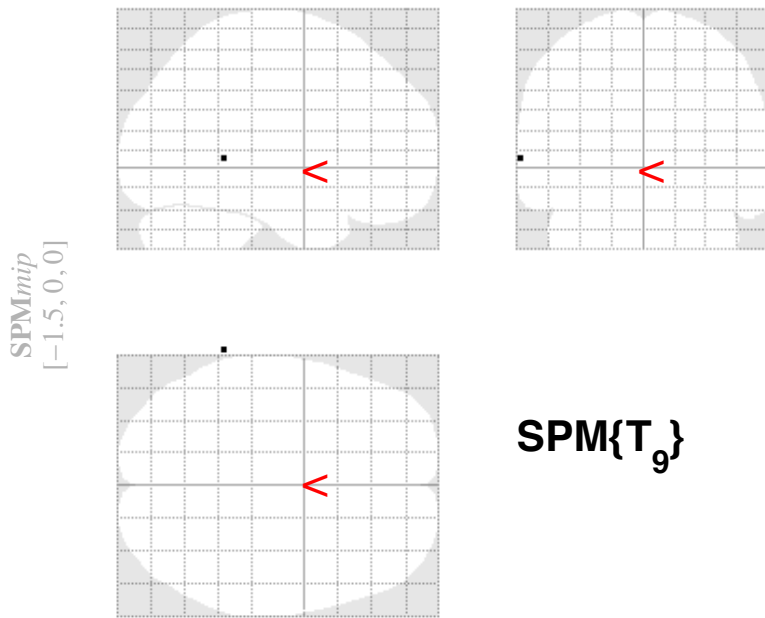
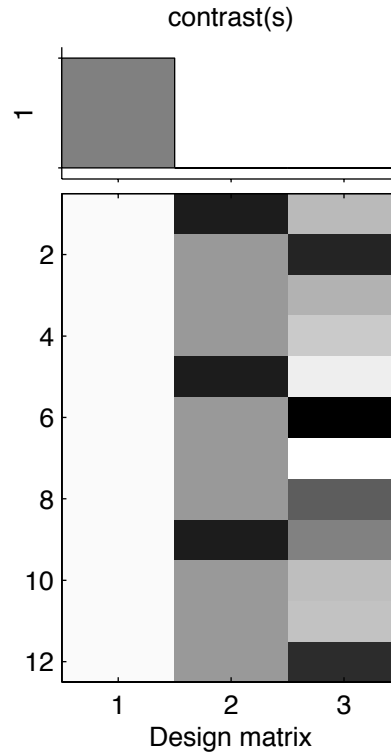


LD x 2back ASL Increase



SPMresults:2back_60mg_fixand2back_5p7mm
 Height threshold T = 4.296806 {p<0.001 (unc.)}
 Extent threshold k = 0 voxels



Statistics: *p-values adjusted for search volume*

cluster-level				peak-level					mm mm mm		
$p_{FWE-corr}$	$q_{FDR-corr}$	k_E	p_{uncorr}	$p_{FWE-corr}$	$q_{FDR-corr}$	T	(Z_{max})	p_{uncorr}			
1.000	0.437	1	0.437	1.000	0.893	4.44	3.15	0.001	-68	-45	3

table shows 3 local maxima more than 8.0mm apart

Height threshold: T = 4.30, p = 0.001 (1.000)

Extent threshold: k = 0 voxels

Expected voxels per cluster, <k> = 1.767

Expected number of clusters, <c> = 28.17

FWEp: 10.666, FDRp: Inf, FWEc: Inf, FDRc: Inf

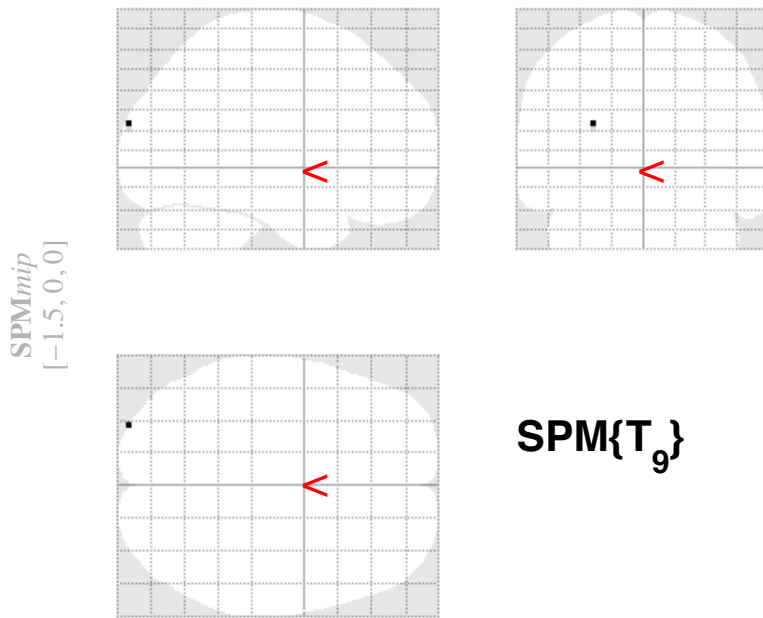
Degrees of freedom = [1.0, 9.0]

FWHM = 9.0 10.2 10.7 mm mm mm; 3.0 3.4 3.6 {voxels}

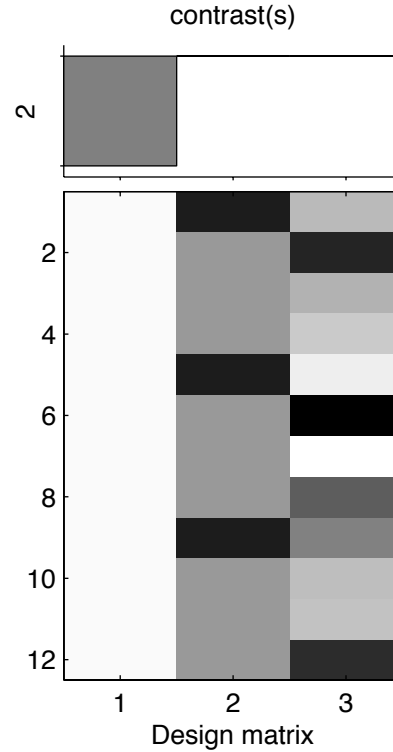
Volume: 1294110 = 47930 voxels = 1172.2 resels

Voxel size: 3.0 3.0 3.0 mm mm mm; (resel = 36.74 voxels)

LD x 2back ASL decreases



SPMresults:2back_60mg_fixand2back_5p7mm
 Height threshold T = 4.296806 {p<0.001 (unc.)}
 Extent threshold k = 0 voxels



Statistics: p-values adjusted for search volume

cluster-level			peak-level						mm mm mm		
$p_{\text{FWE-corr}}$	$q_{\text{FDR-corr}}$	k_E	p_{uncorr}	$p_{\text{FWE-corr}}$	$q_{\text{FDR-corr}}$	T	(Z_{c})	p_{uncorr}			
0.999	0.269	2	0.269	1.000	0.629	4.88	3.33	0.000	-28	-96	21

table shows 3 local maxima more than 8.0mm apart

Height threshold: T = 4.30, p = 0.001 (1.000) Degrees of freedom = [1.0, 9.0]
 Extent threshold: k = 0 voxels FWHM = 9.0 10.2 10.7 mm mm mm; 3.0 3.4 3.6 {voxels}
 Expected voxels per cluster, <k> = 1.767 Volume: 1294110 = 47930 voxels = 1172.2 resels
 Expected number of clusters, <c> = 28.17 Voxel size: 3.0 3.0 3.0 mm mm mm; (resel = 36.74 voxels)
 FWEp: 10.666, FDRp: Inf, FWEc: Inf, FDRc: Inf