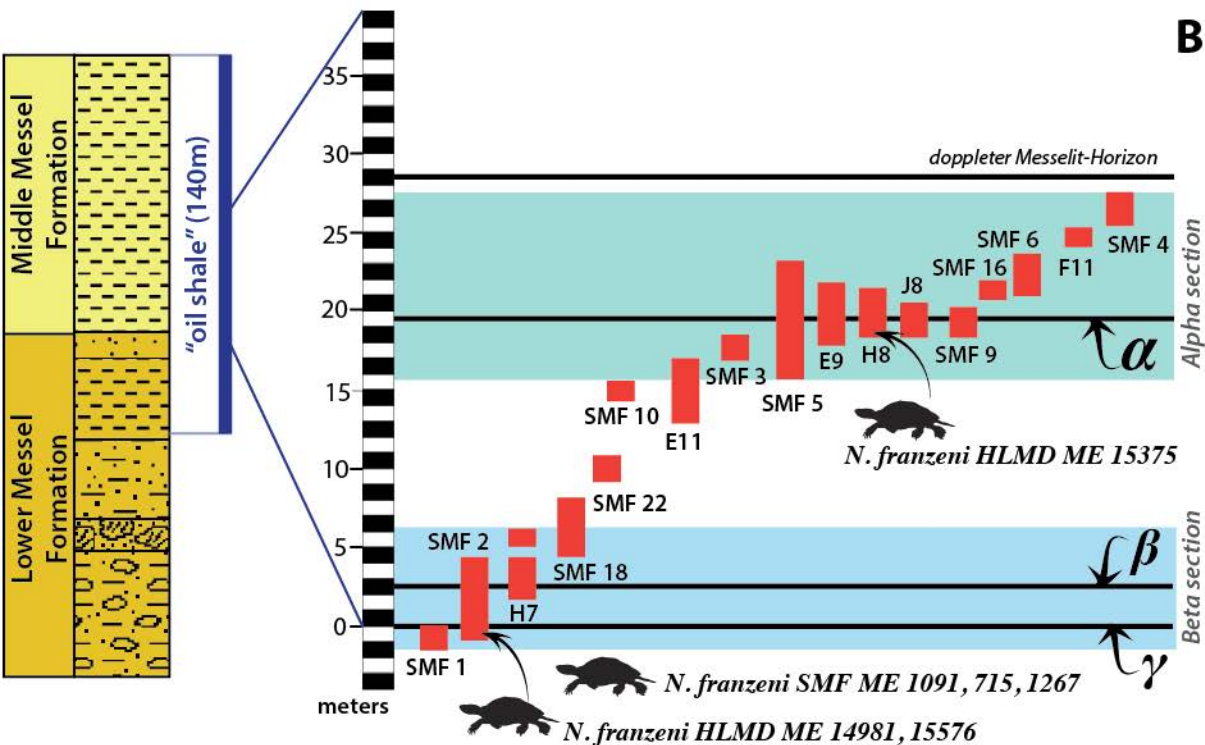




**A**



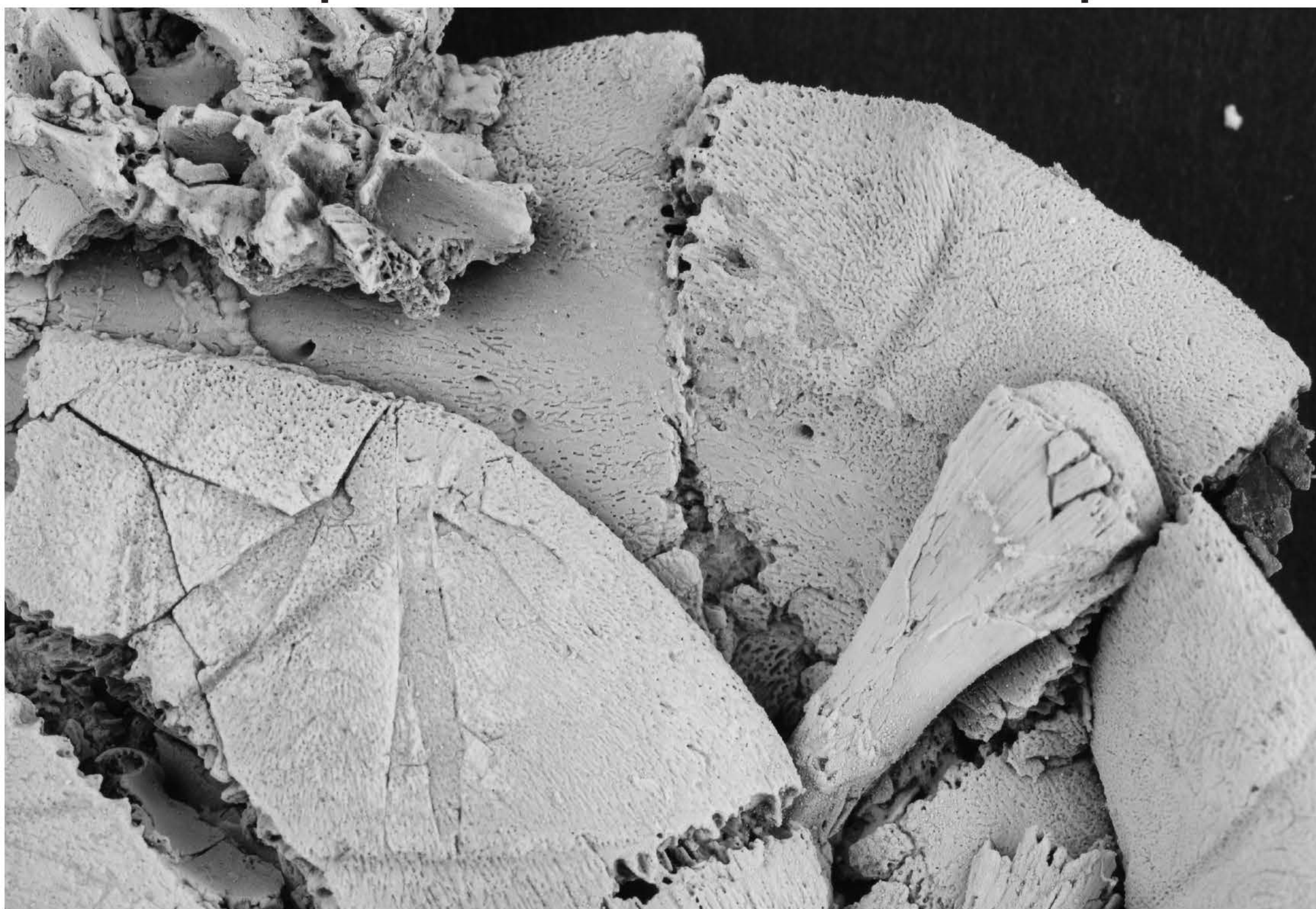
**B**

-  "Messel oil shale"
-  fine gravel to clay, tuff, mostly graded
-  sand, gravel with oil shale
-  amphibolite blocks, graded matrix with sand and clay

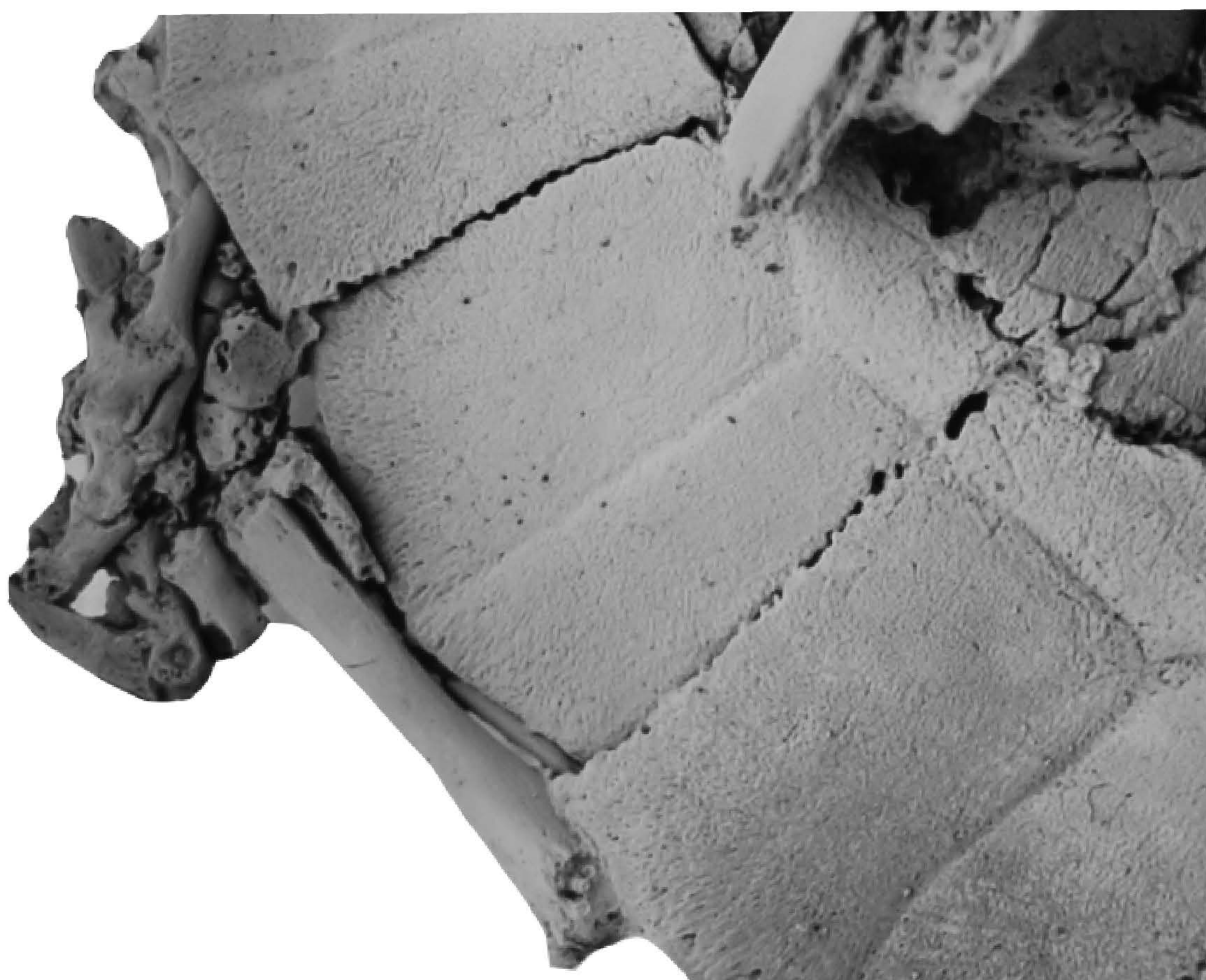




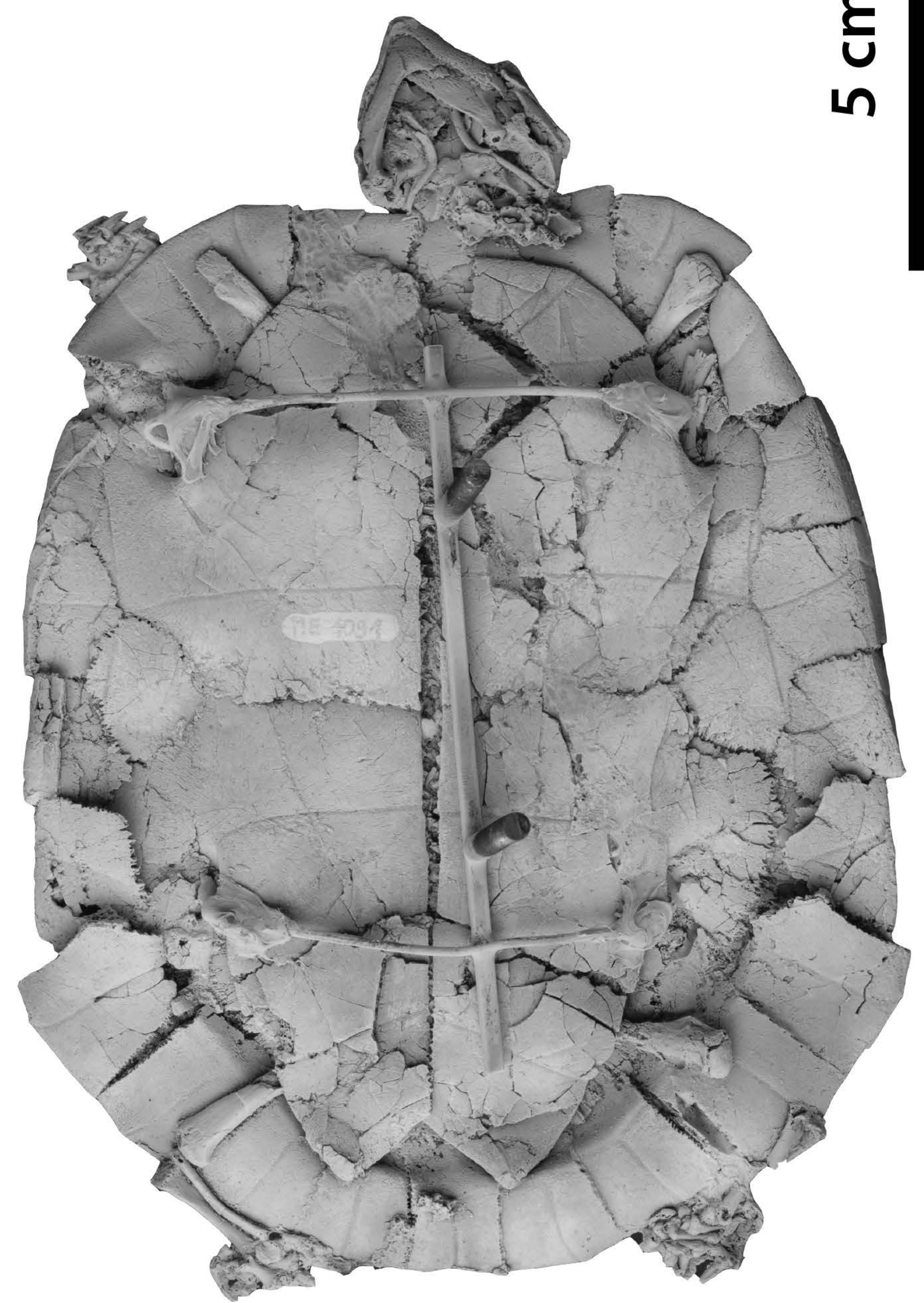
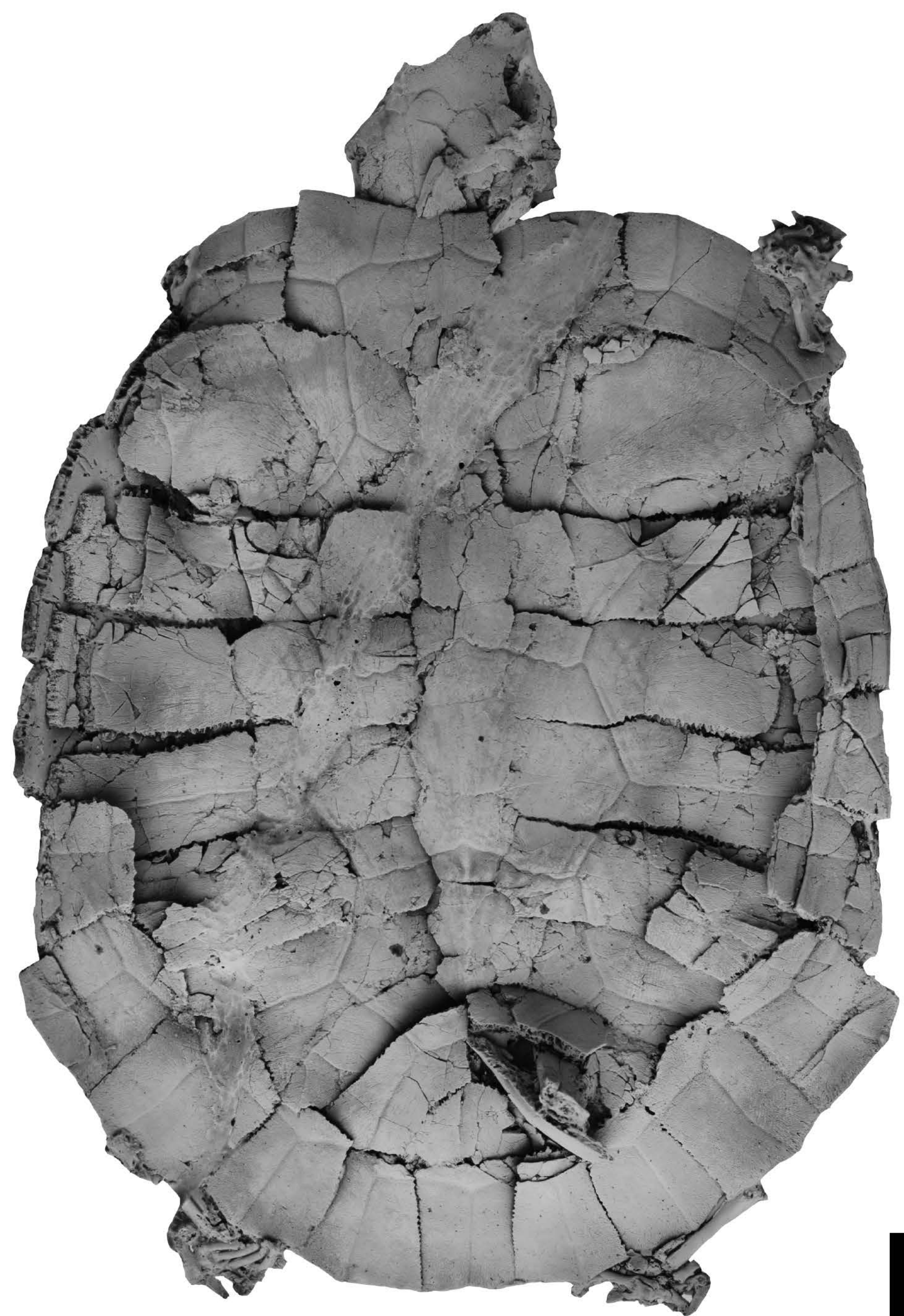
Skull interparietal scute/bone sculpture



Left epiplastron, humerus, cervicals



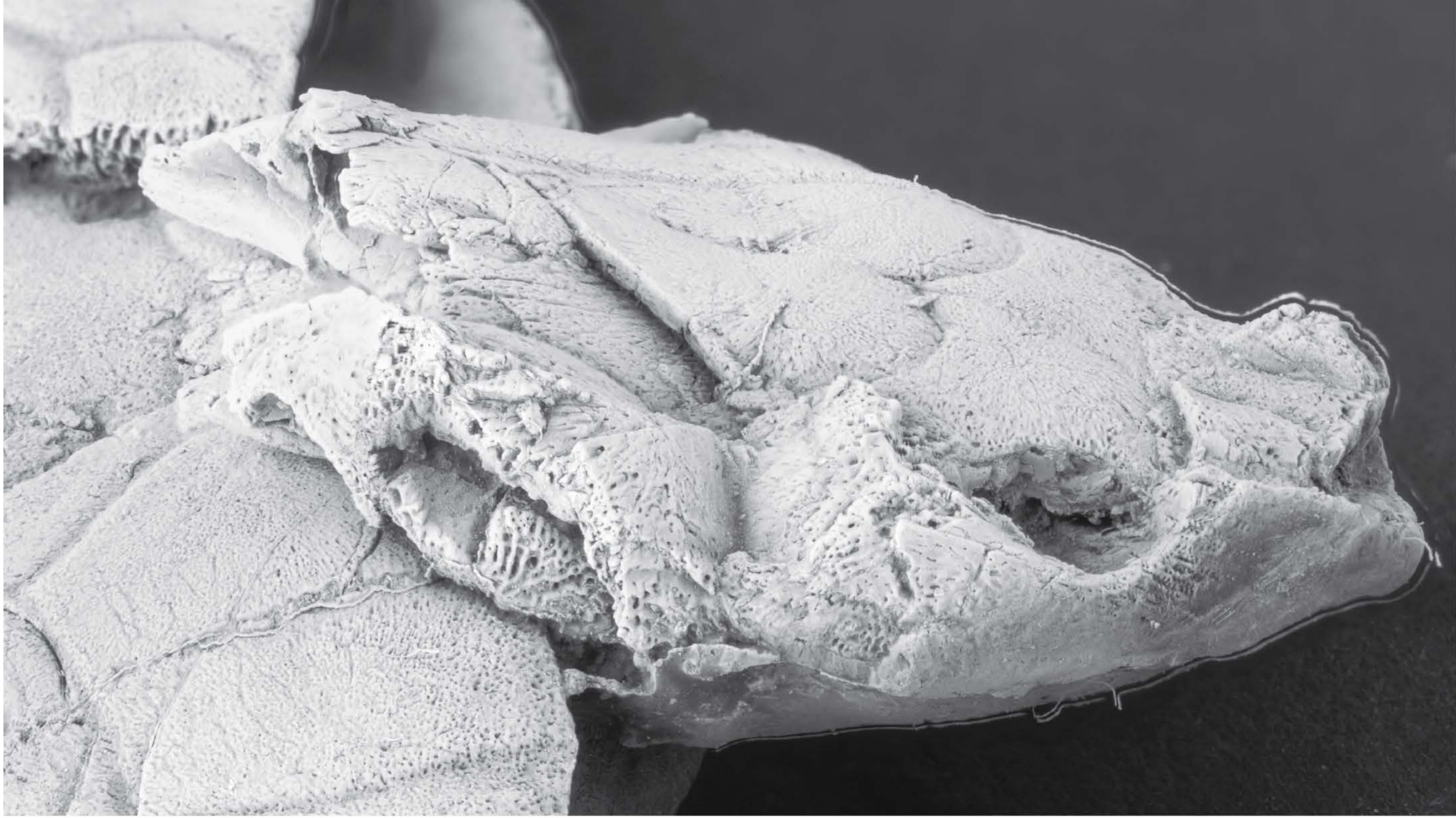
Right pes elements, tibia, peripherals



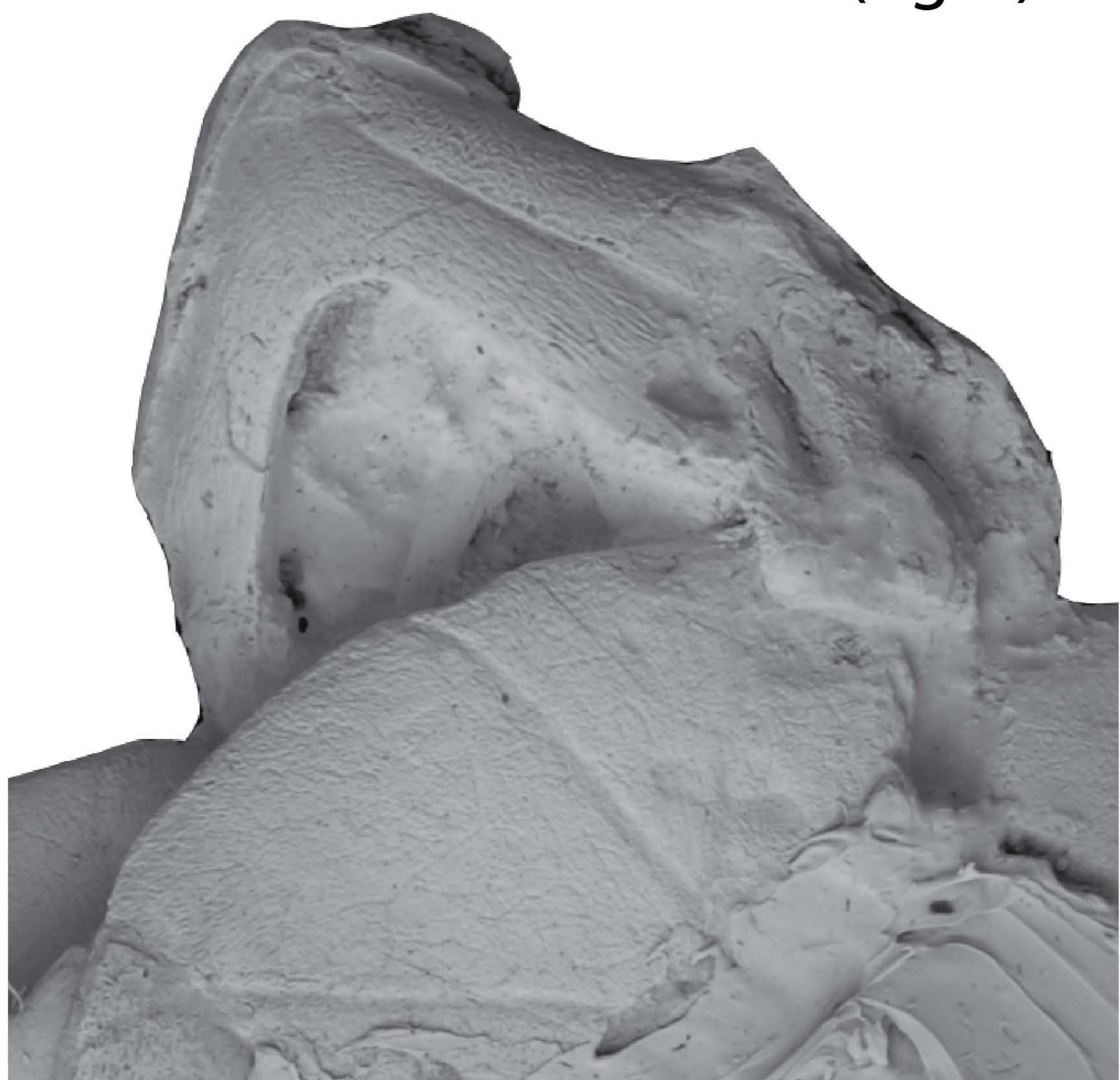
5 cm

**Plate 1. *Neochelys franzeni* SMF ME 1091 (Holotype)**

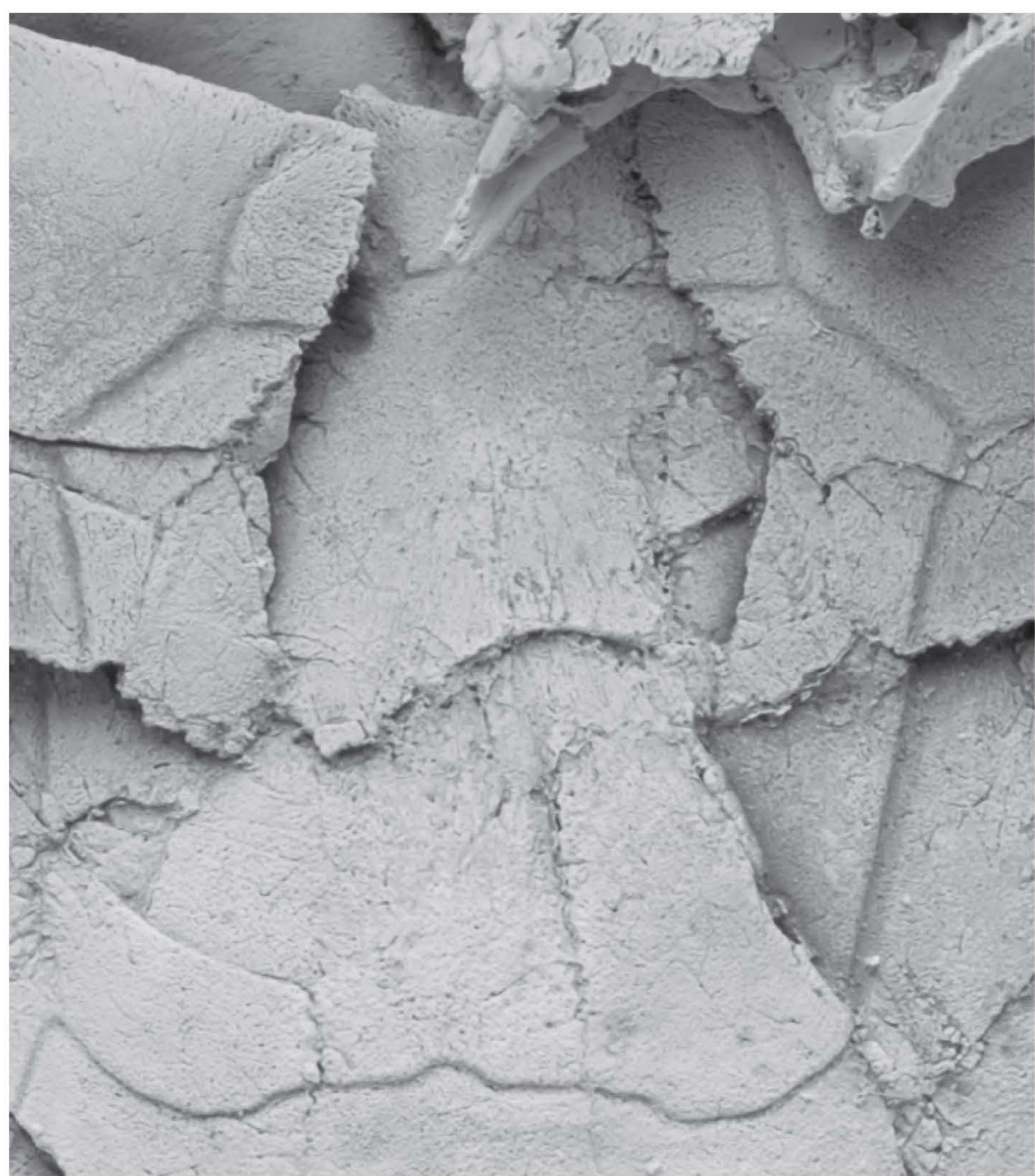




Skull lateral (right) view



Skull ventral view



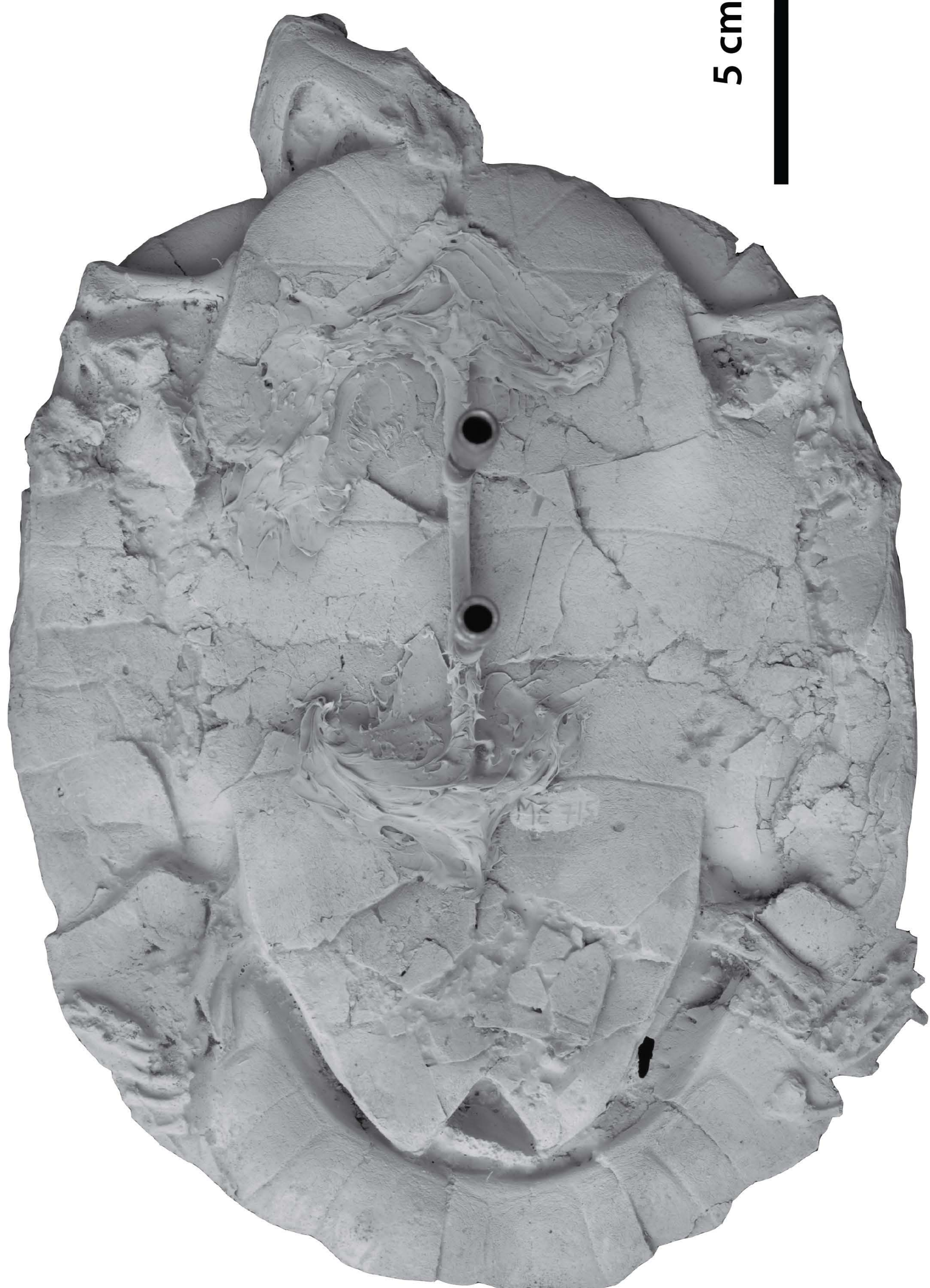
Nuchal/vertebral scute 1



Peripheral/costals dorsal sculpture



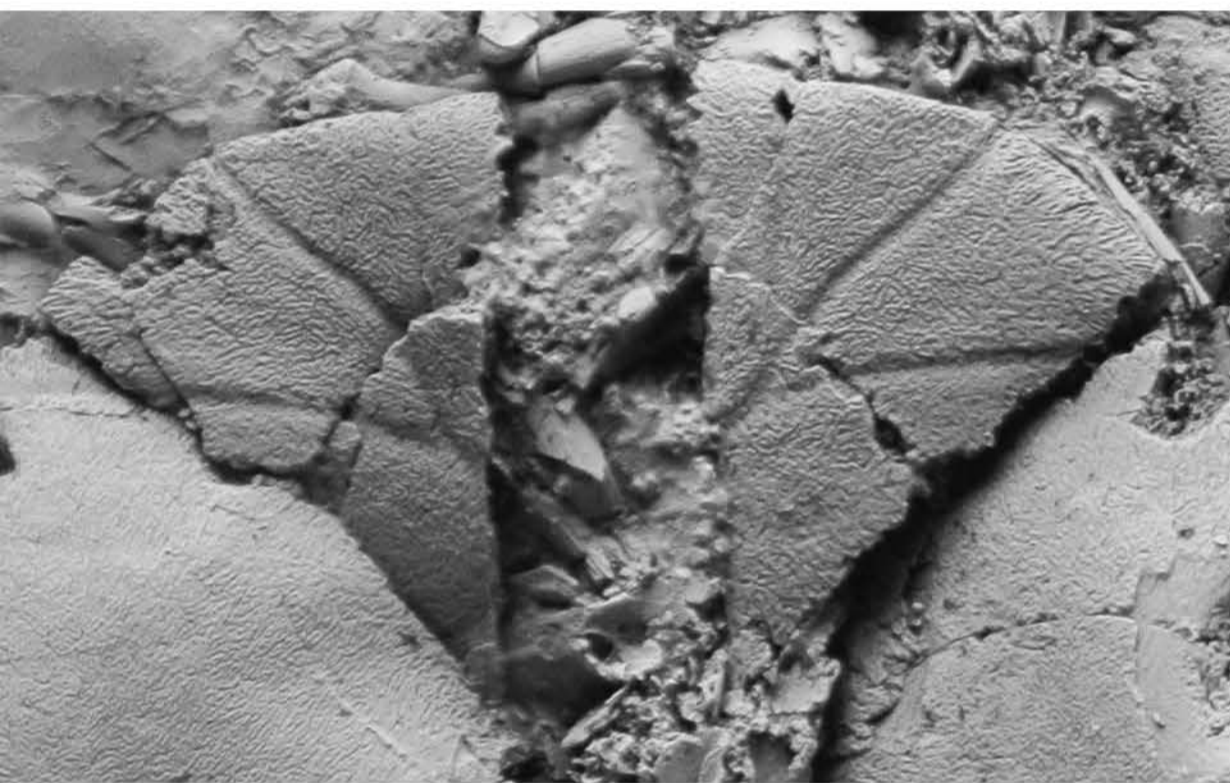
5 cm



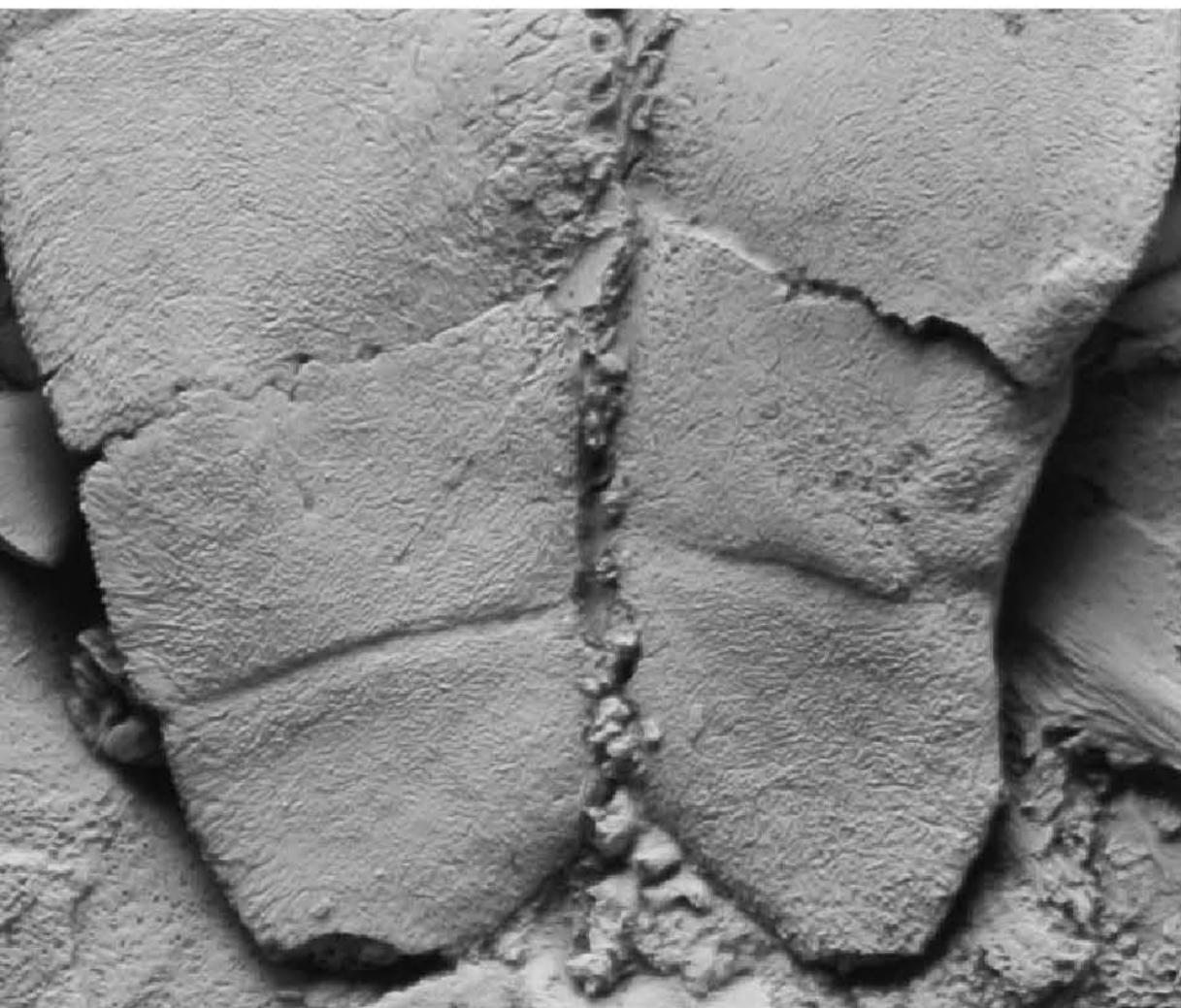




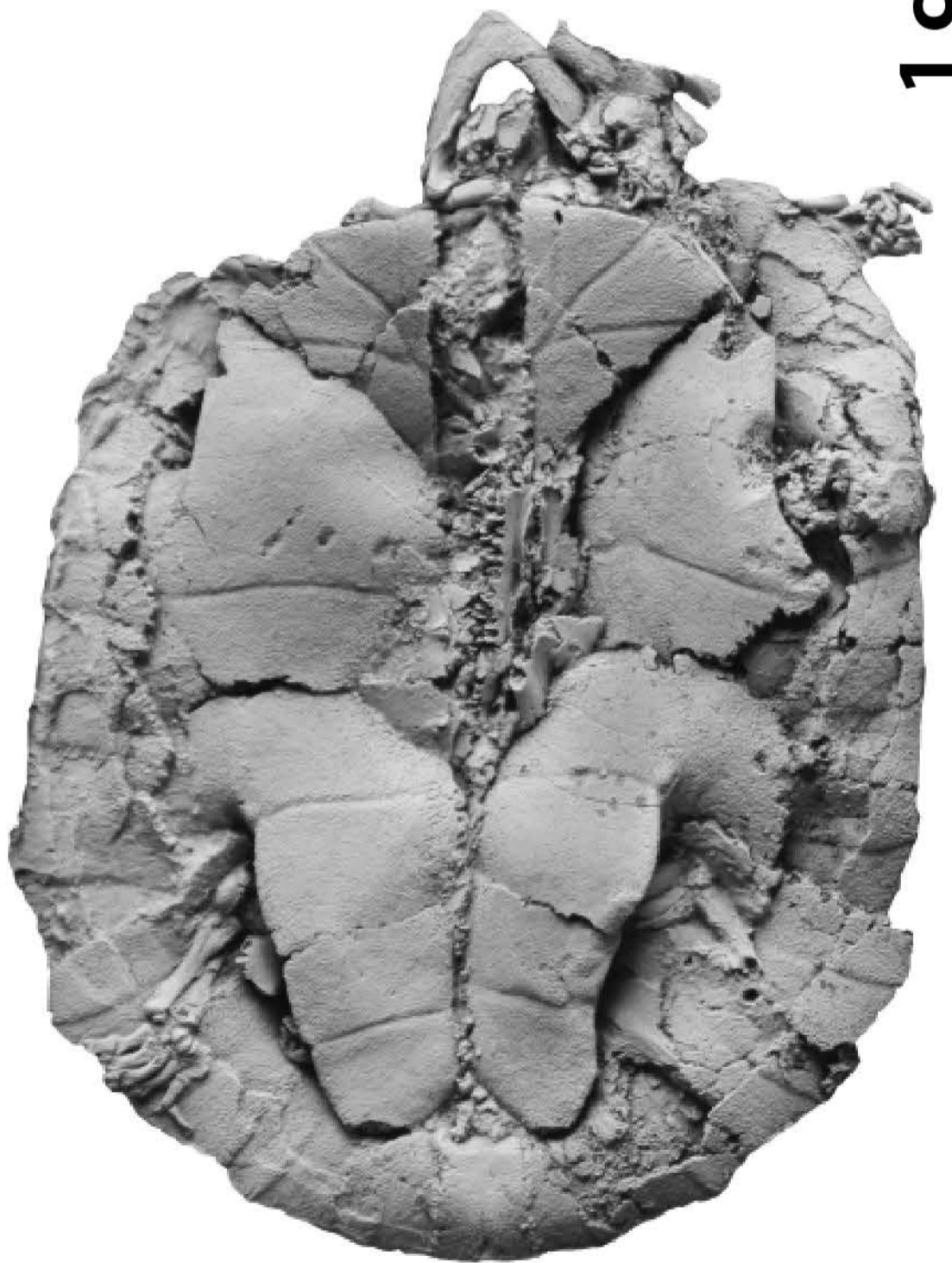
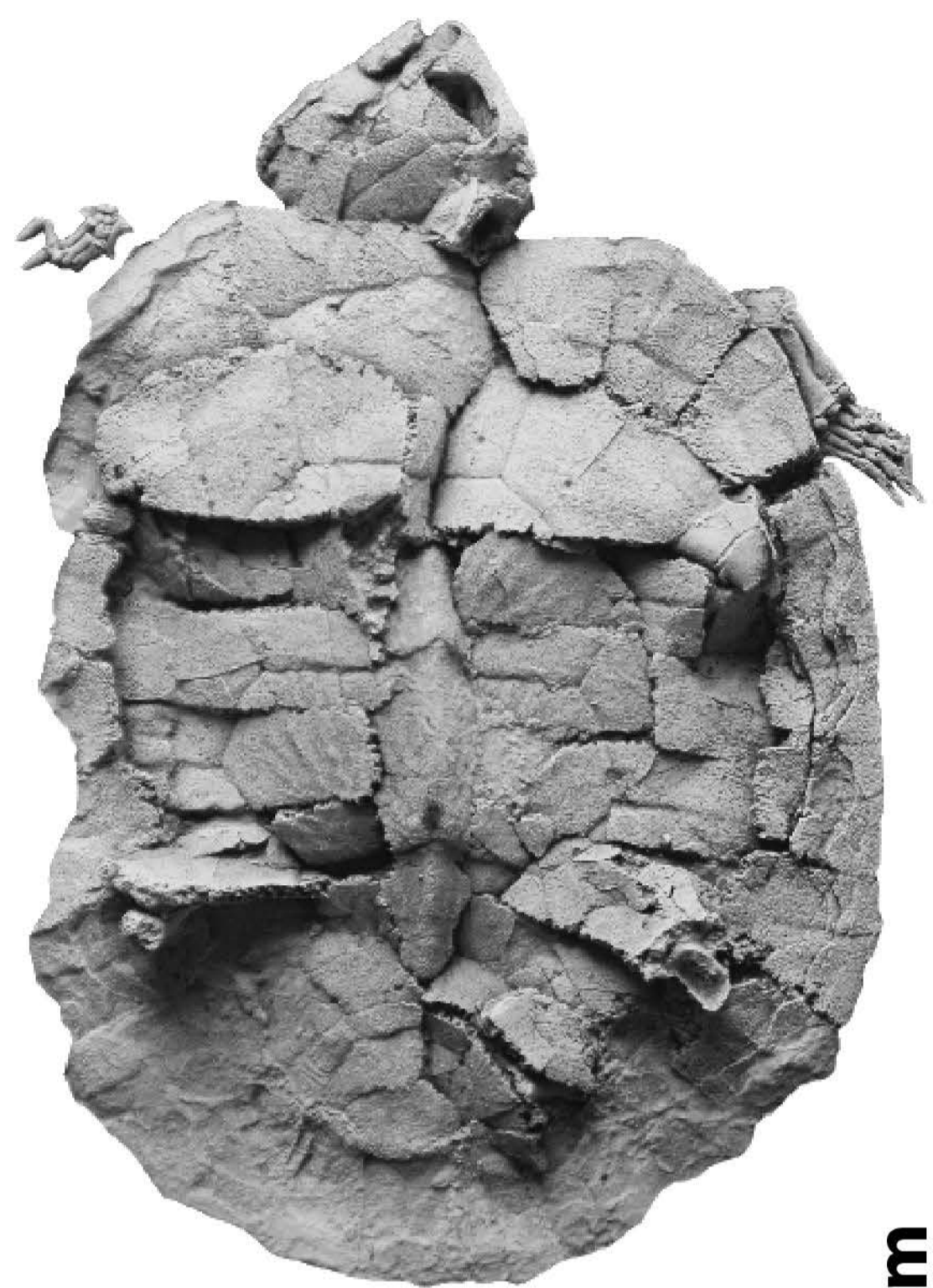
Vertebral 3, radial striations



Epiplastra



Xiphiplastra



1 cm



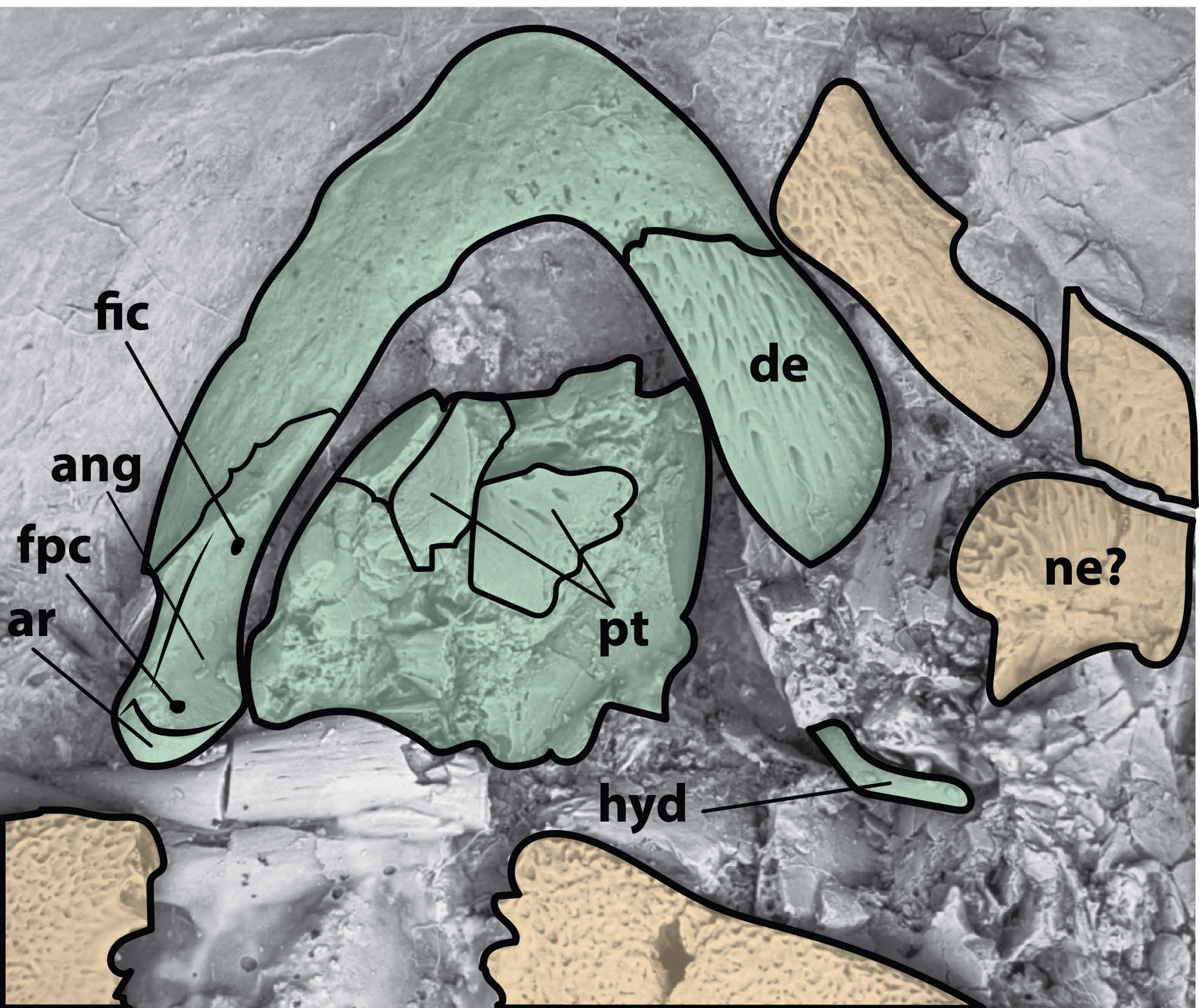
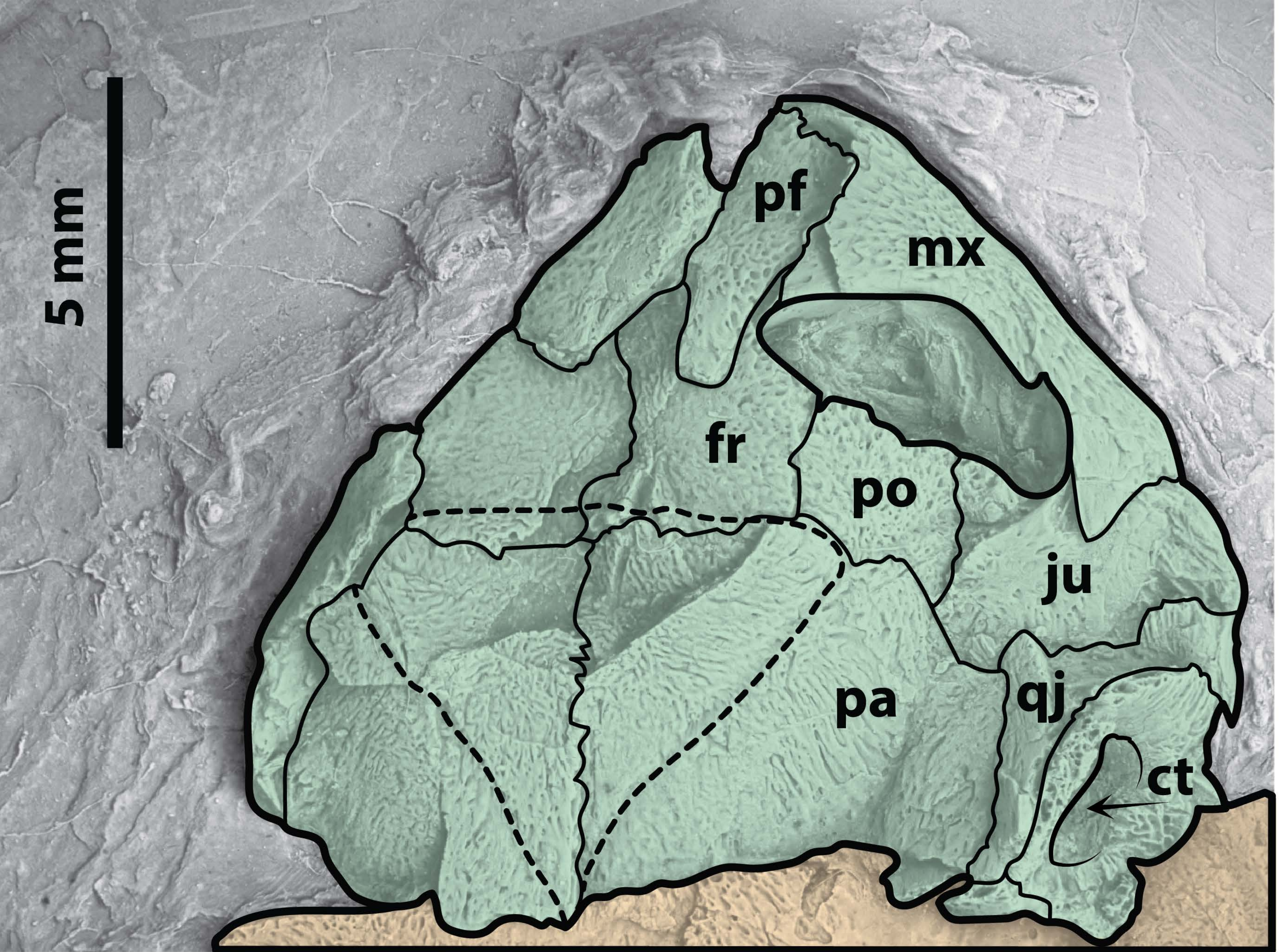


Plate 4. *Neochelys franzeni* HLMD ME 14981 skull, dorsal(top), ventral (bottom)





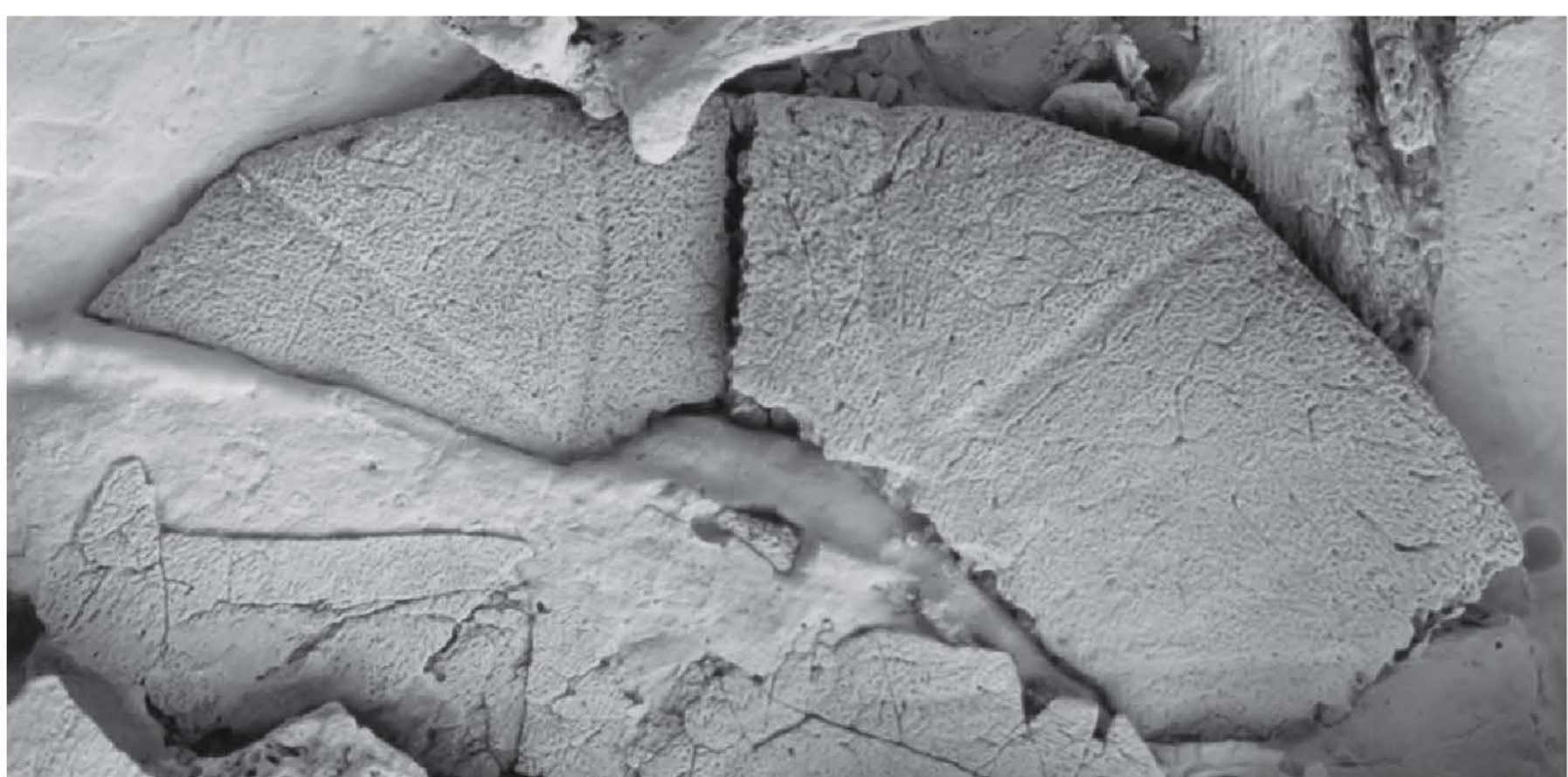
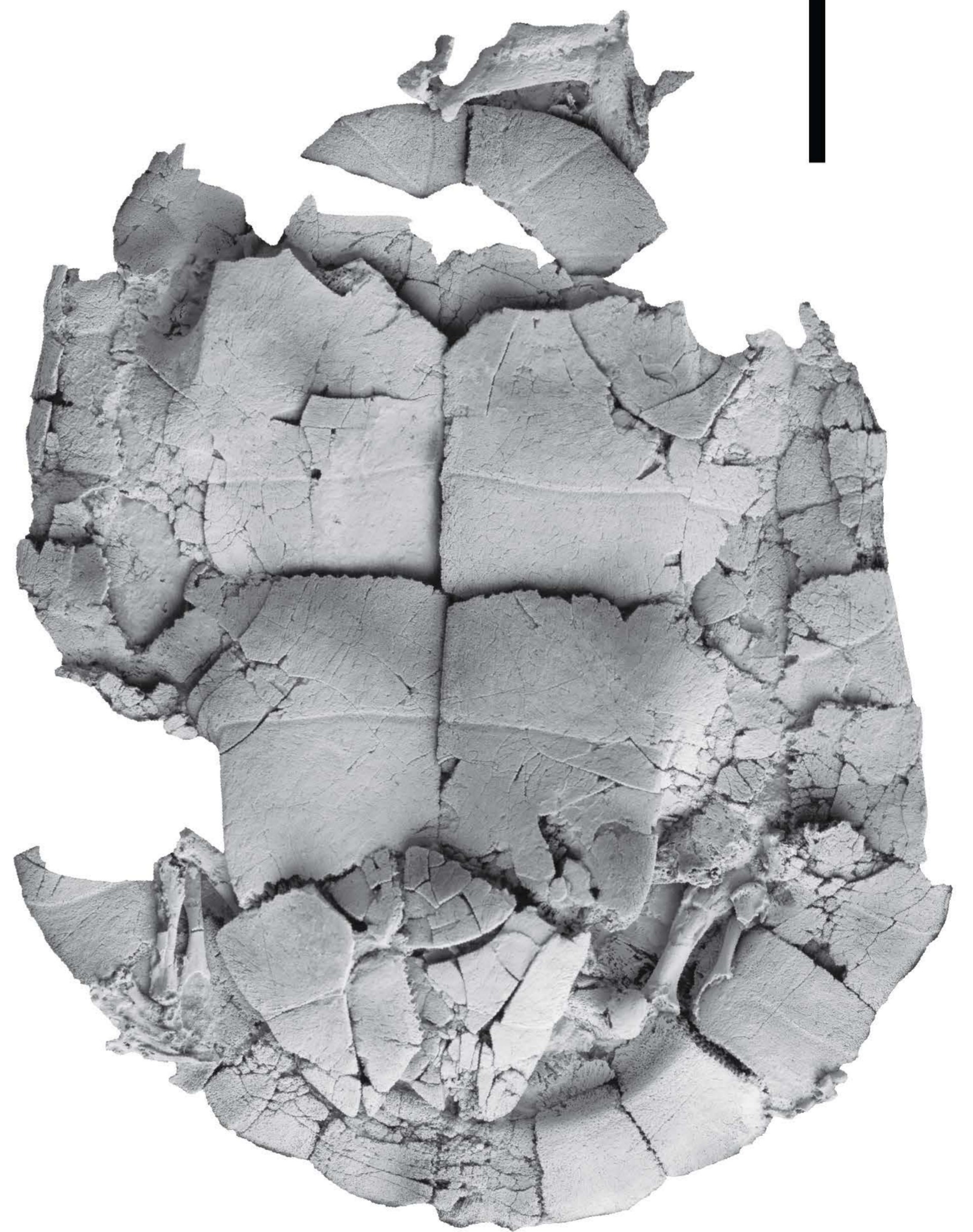
Neurals and the medial ridge



5 cm

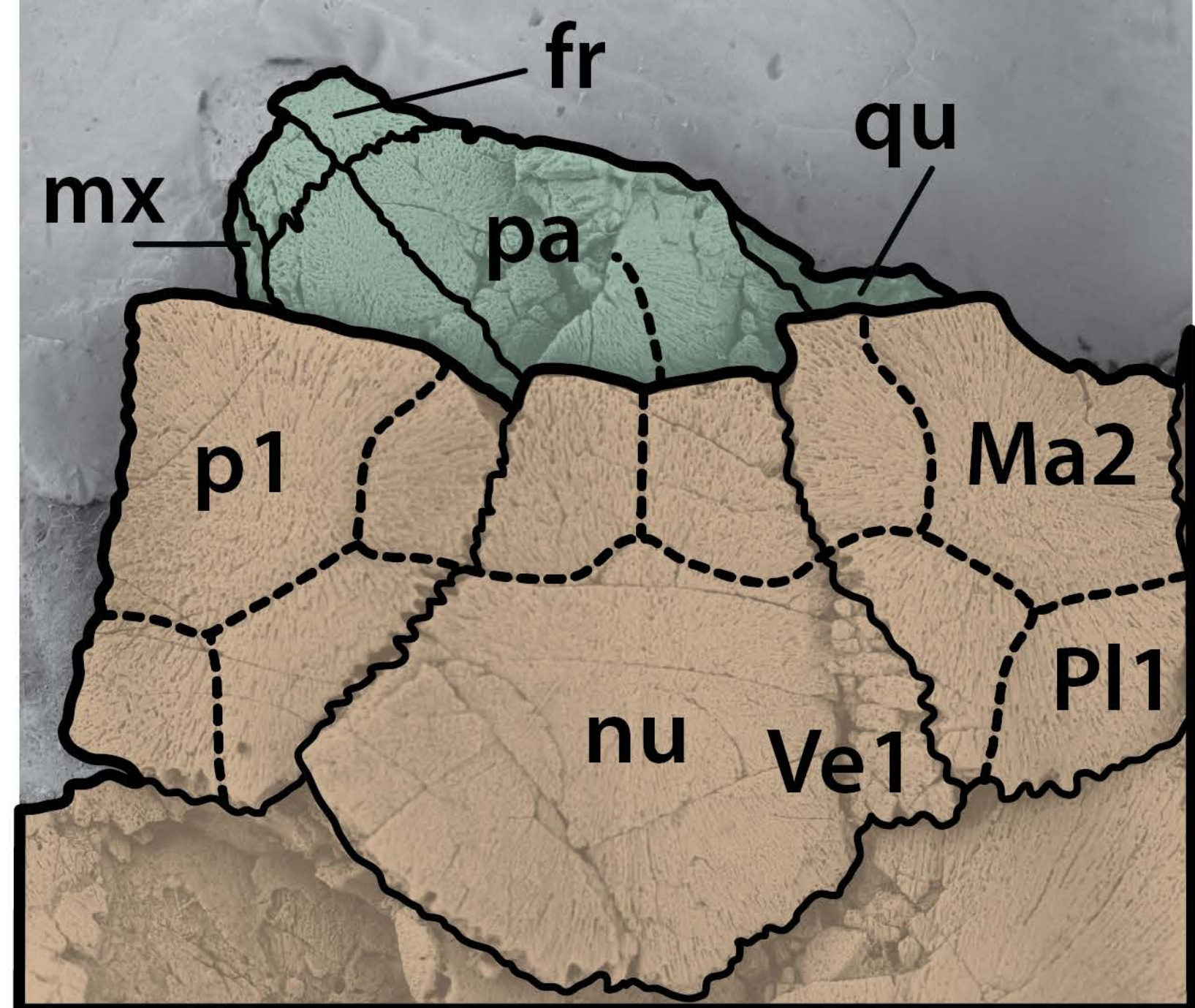


Left mesoplastron, pec-abd sulcus



Epiplastra

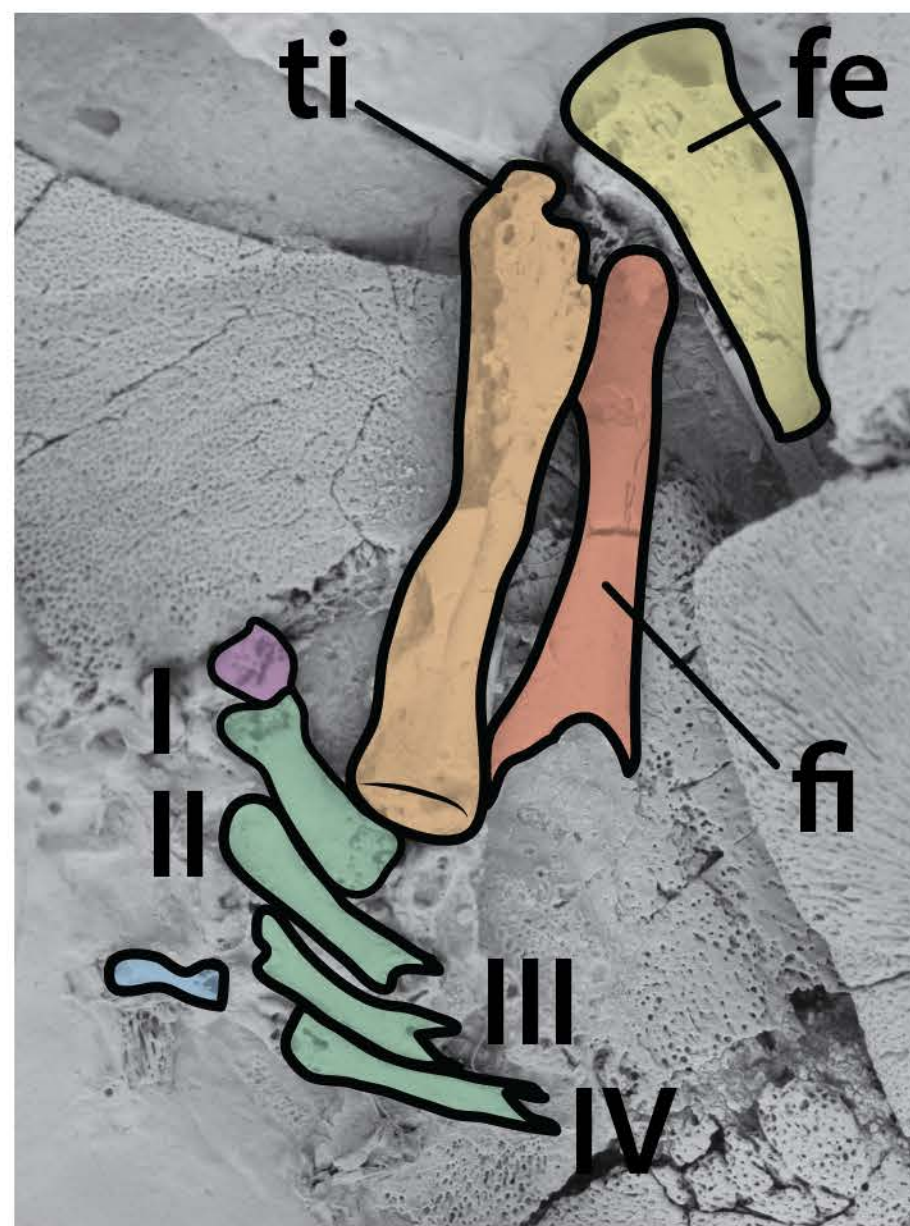




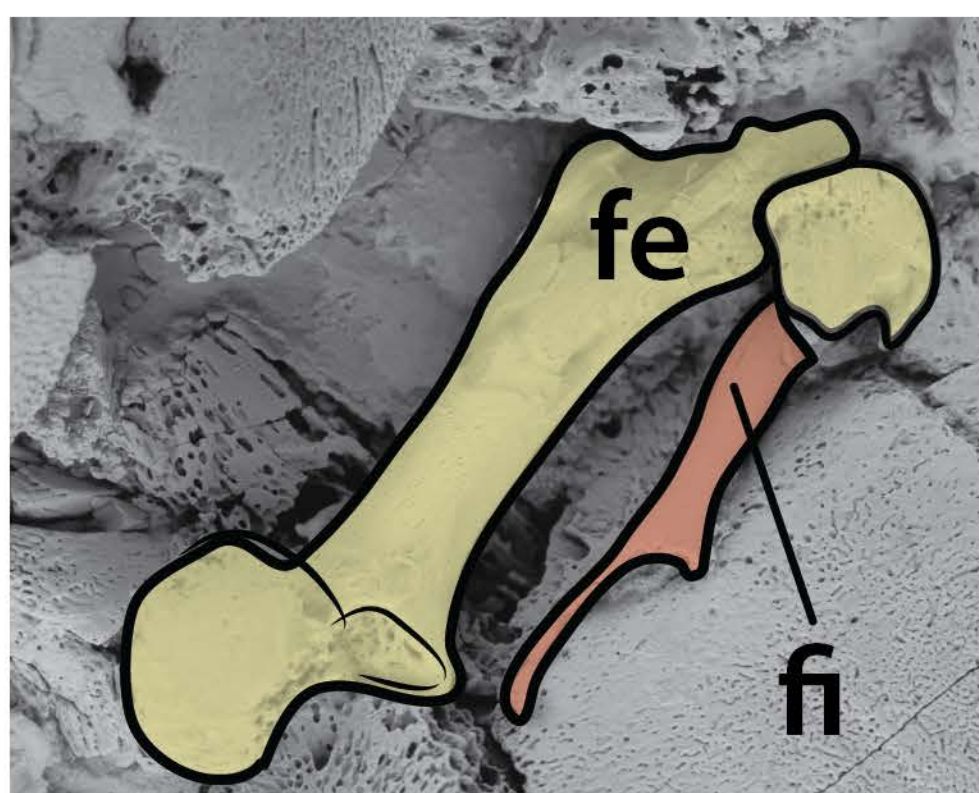
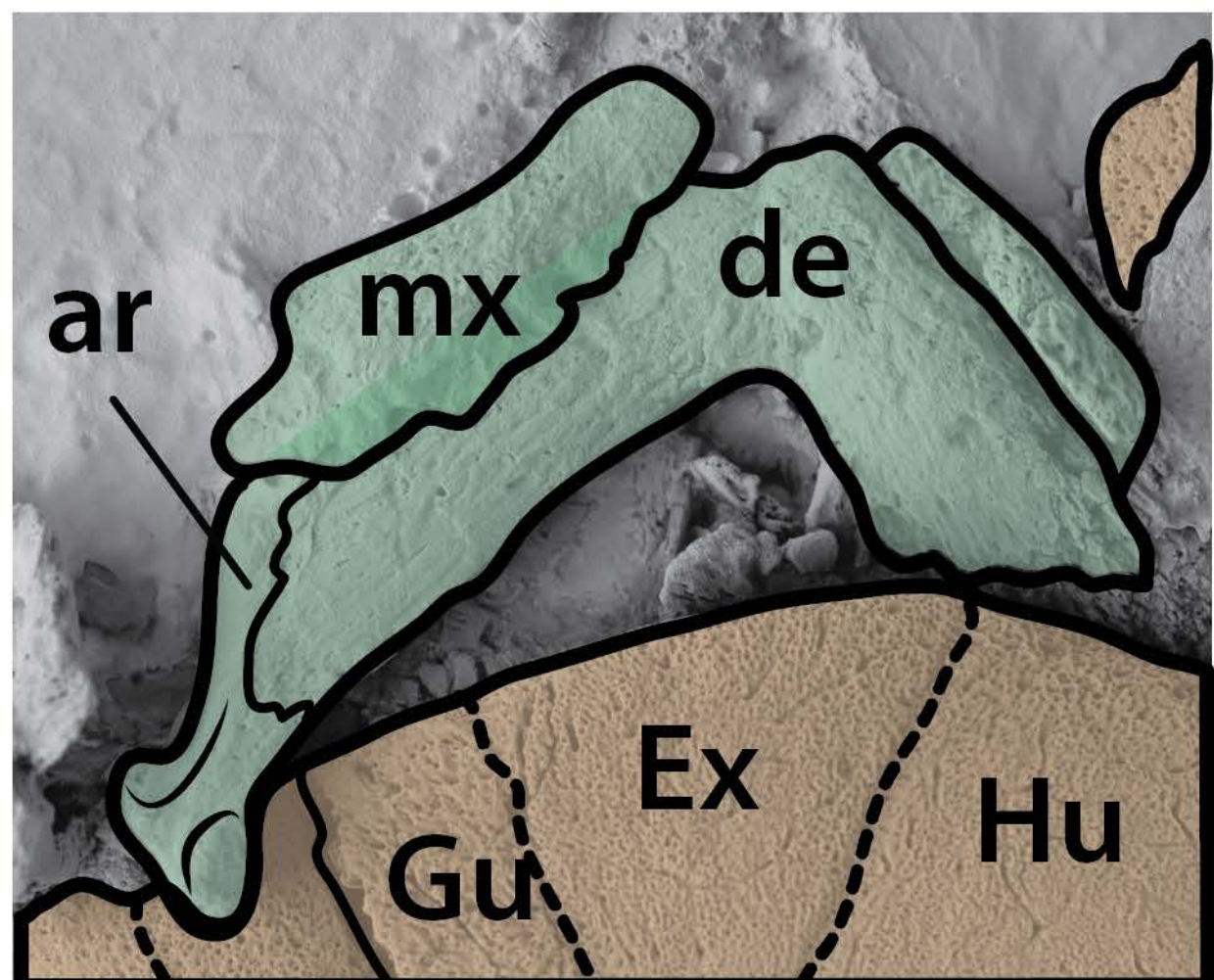
Skull dorsal view/nuchal and peripherals 1



Lower jaw



Right pes elements(top)-left femur-fibula (bottom)

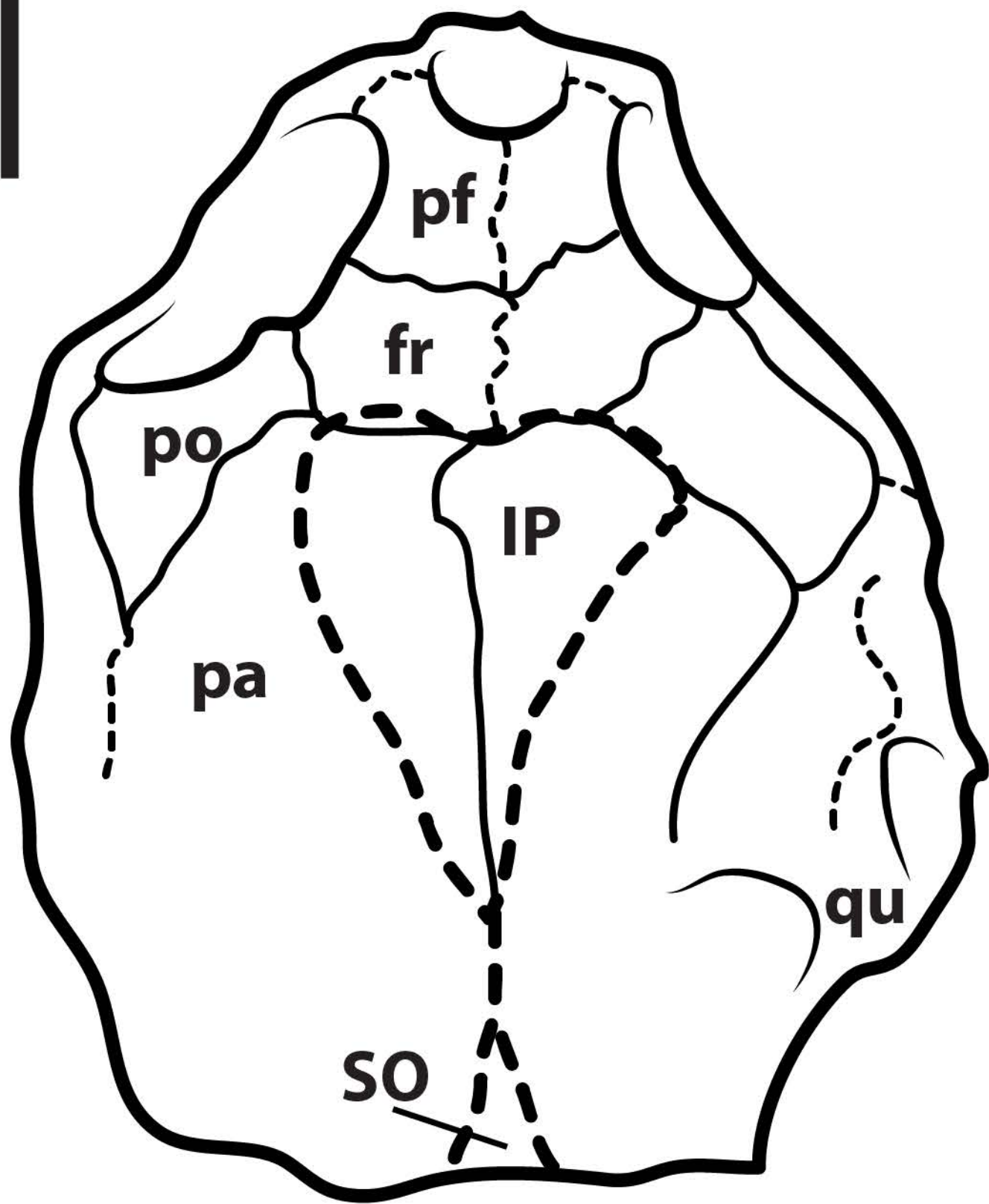






Skull dorsal view

0.5 cm



2 cm

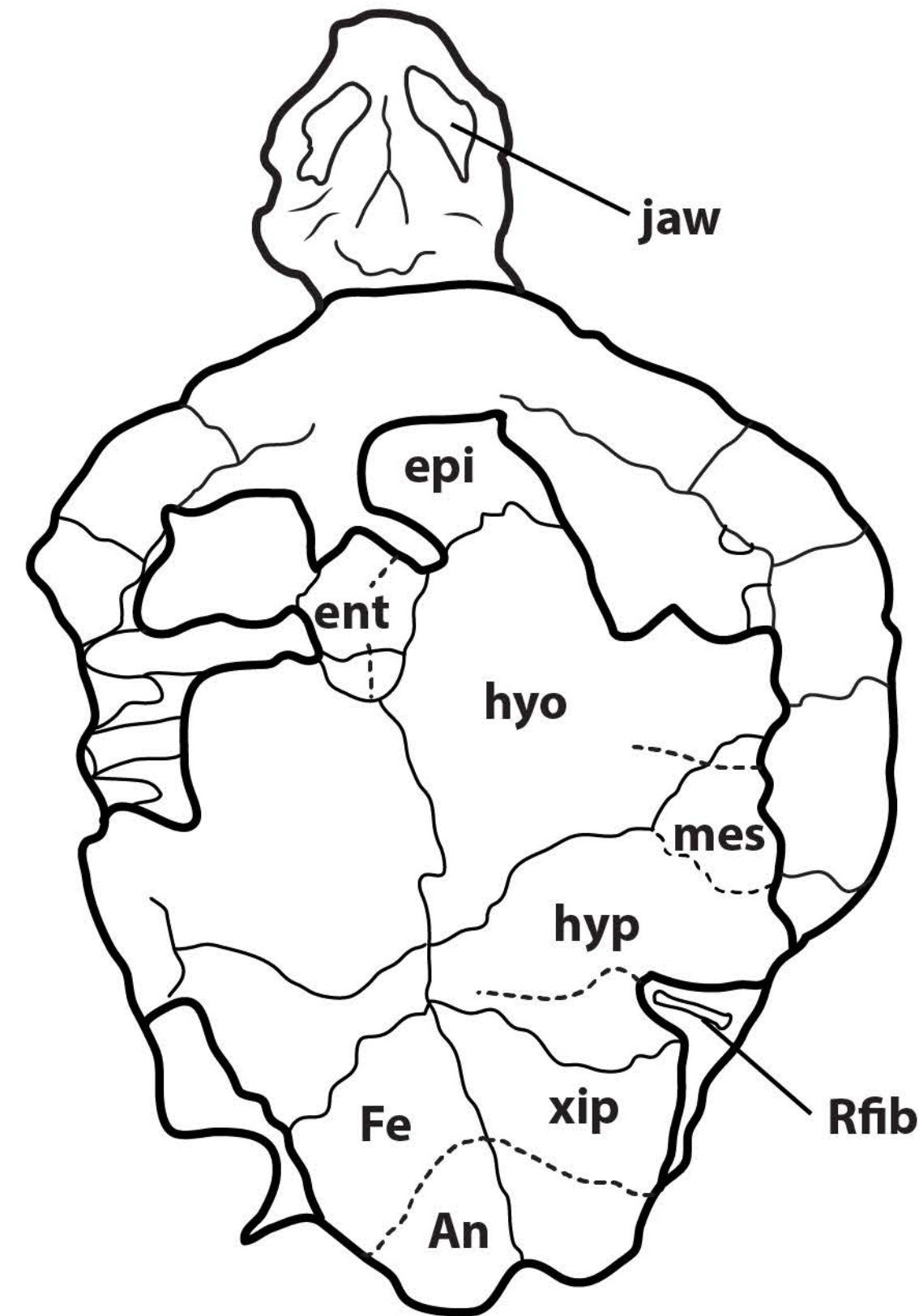
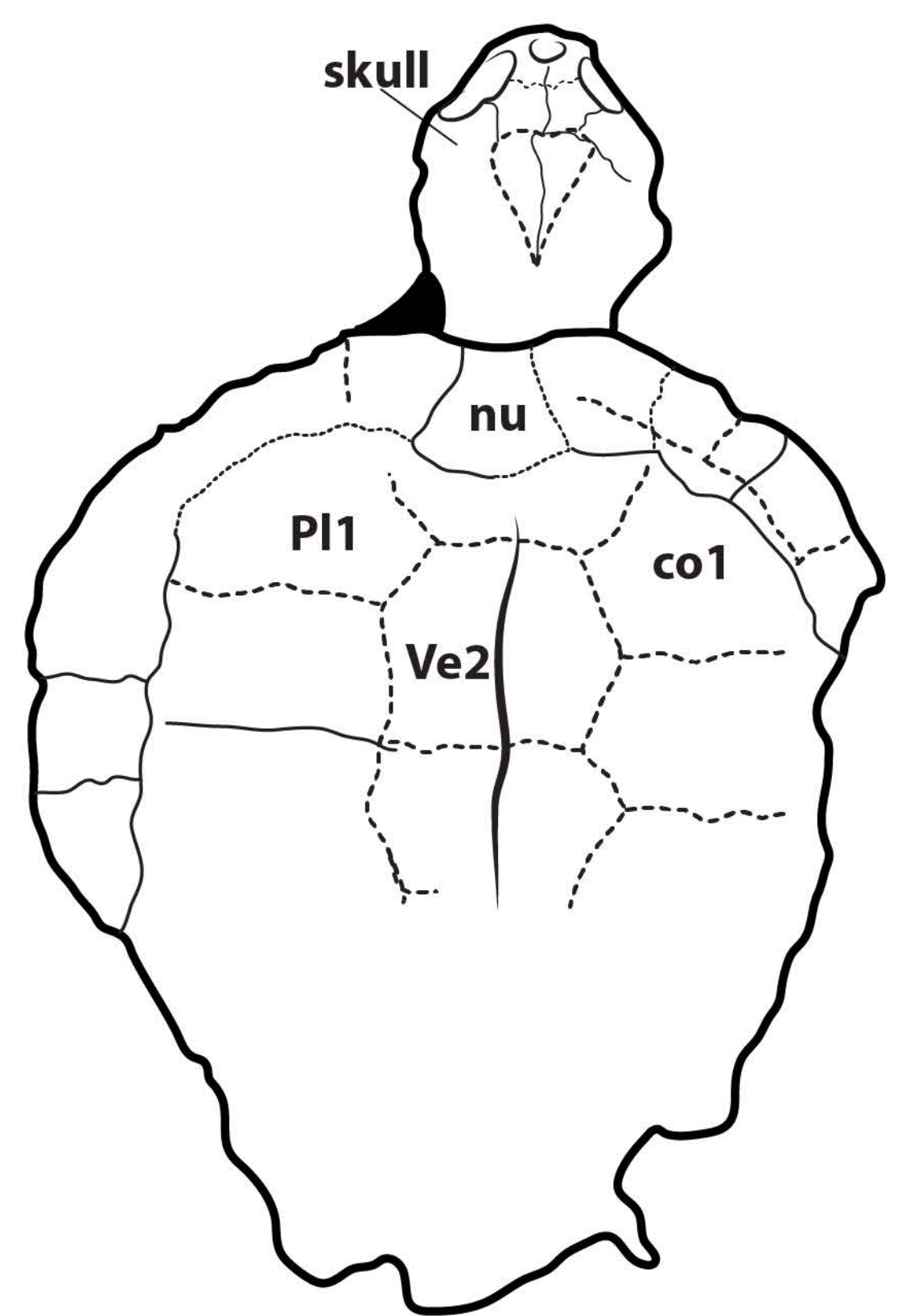
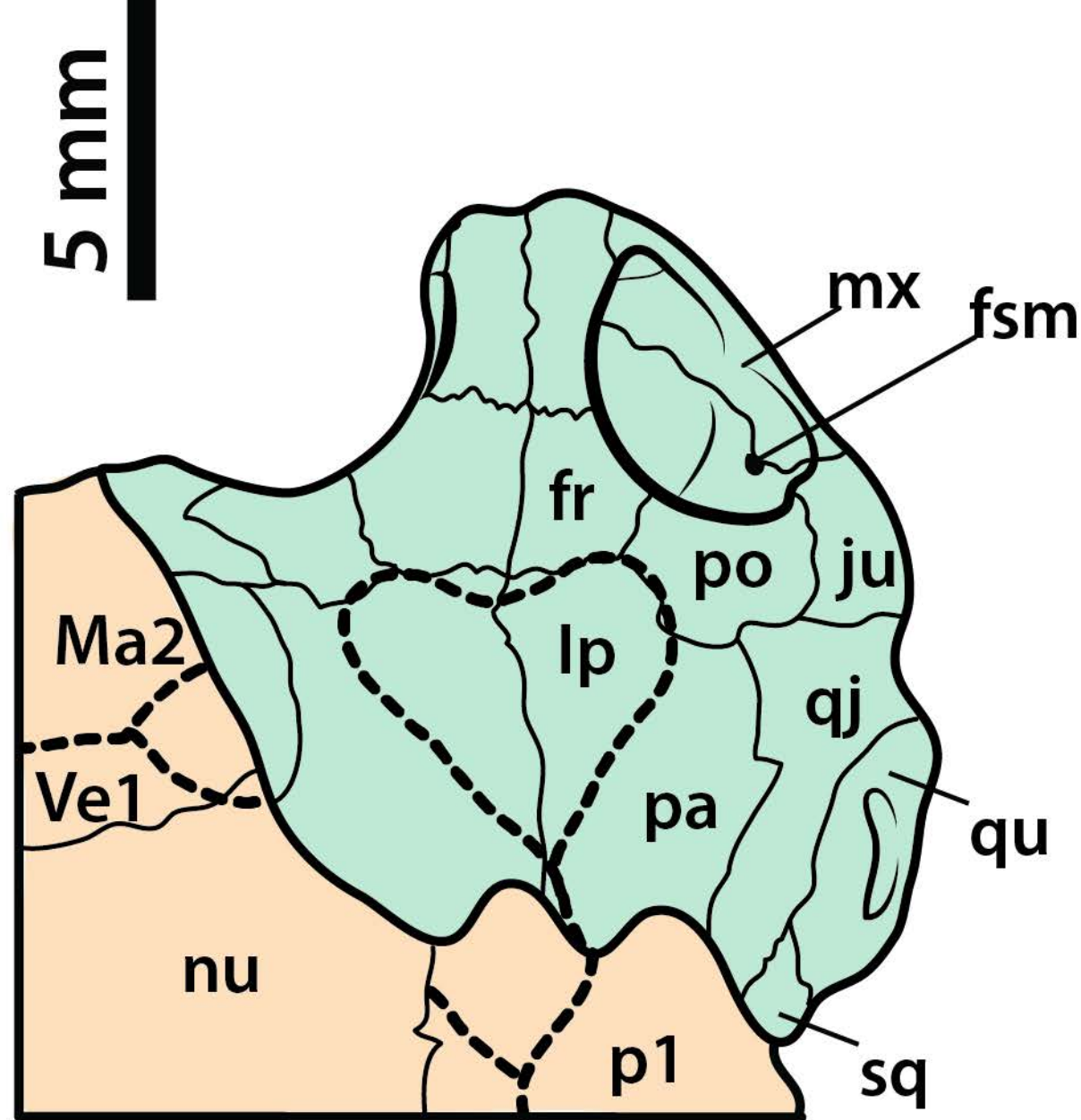


Plate 7. *Neochelys franzeni* HLMD ME 15375





**Plate 8. *Neochelys franzeni* SNR 202/617**