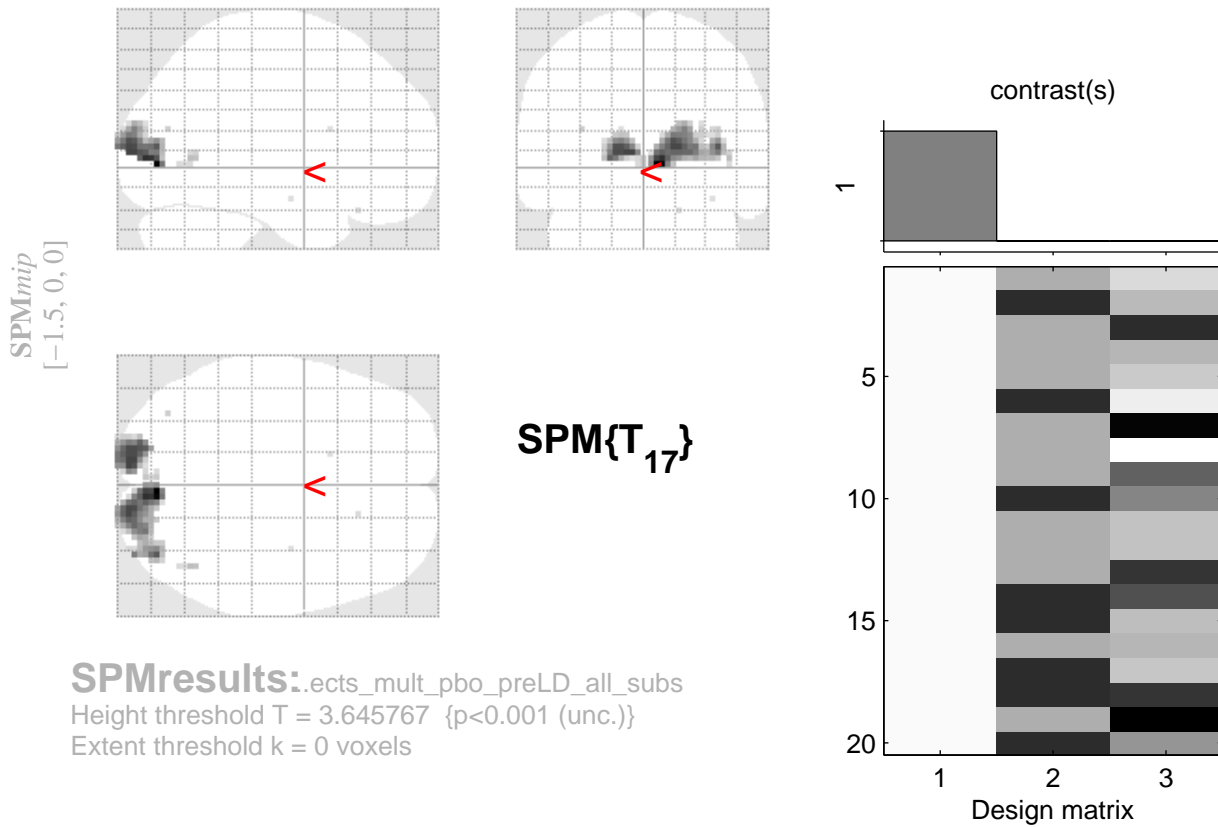


check increases MULT 20 subs, preLD, pbo day only



SPMresults: .ects_mult_pbo_preLD_all_subs
 Height threshold $T = 3.645767$ { $p < 0.001$ (unc.)}
 Extent threshold $k = 0$ voxels

Statistics: p -values adjusted for search volume

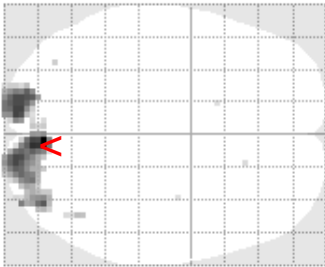
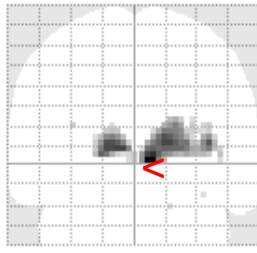
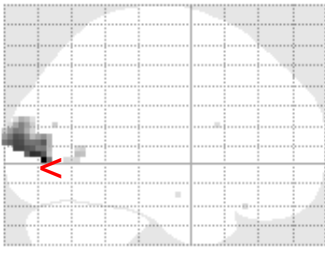
set-level		cluster-level				peak-level					mm mm mm		
p	c	$p_{FWE-corr}$	$q_{FDR-corr}$	k_E	p_{uncorr}	$p_{FWE-corr}$	$q_{FDR-corr}$	T	(Z_{\equiv})	p_{uncorr}			
0.877	6	0.000	0.000	369	0.000	0.027	0.063	7.36	4.87	0.000	4	-81	0
						0.182	0.083	6.19	4.42	0.000	-10	-96	6
						0.199	0.083	6.12	4.39	0.000	14	-96	9
		0.902	0.693	7	0.261	0.980	0.663	4.21	3.44	0.000	44	-63	3
		0.998	0.693	1	0.693	0.997	0.891	3.95	3.28	0.001	-34	-75	18
		0.998	0.693	1	0.693	1.000	0.940	3.73	3.15	0.001	16	27	-24
		0.998	0.693	1	0.693	1.000	0.940	3.70	3.13	0.001	-14	12	18
		0.998	0.693	1	0.693	1.000	0.940	3.69	3.12	0.001	34	-9	-18

table shows 3 local maxima more than 8.0mm apart

Height threshold: $T = 3.65$, $p = 0.001$ (1.000) Degrees of freedom = [1.0, 17.0]
 Extent threshold: $k = 0$ voxels FWHM = 12.1 13.4 13.2 mm mm mm; 4.0 4.5 4.4 {voxels}
 Expected voxels per cluster, $\langle k \rangle = 5.987$ Volume: 1294110 = 47930 voxels = 543.1 resels
 Expected number of clusters, $\langle c \rangle = 8.88$ Voxel size: 3.0 3.0 3.0 mm mm mm; (resel = 79.30 voxels)
 FWEp: 7.013, FDRp: Inf, FWEc: 369, FDRc: 369

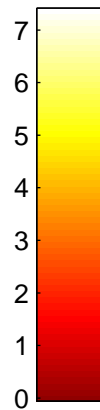
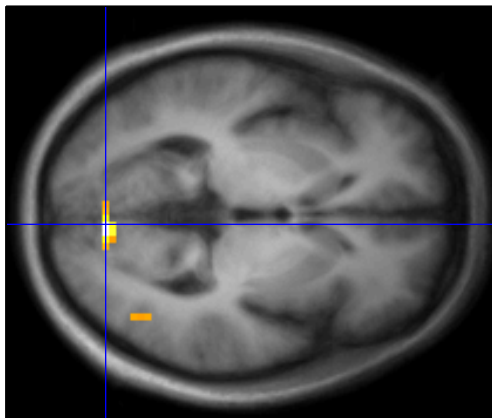
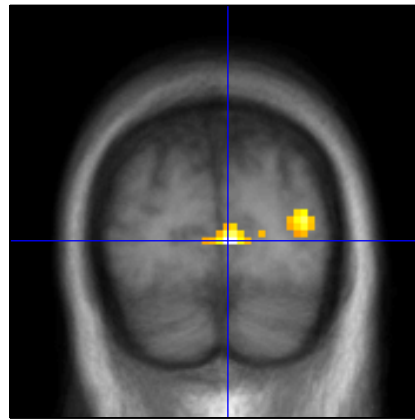
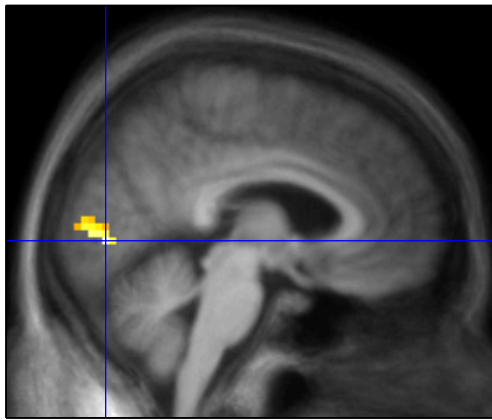
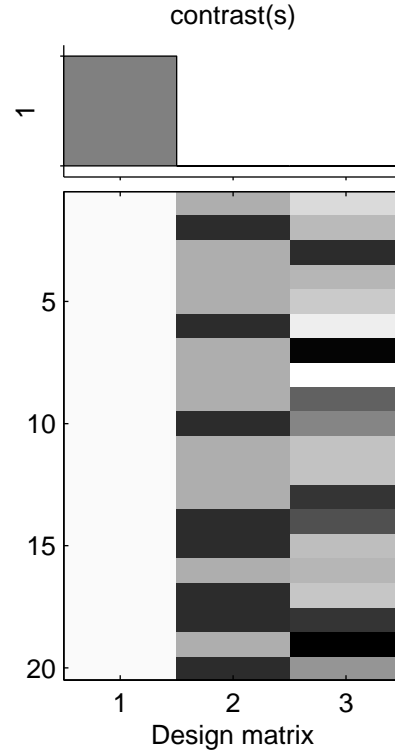
check increases MULT 20 subs, preLD, pbo day only

SPM_{mip}
[4.5, -81, 0]

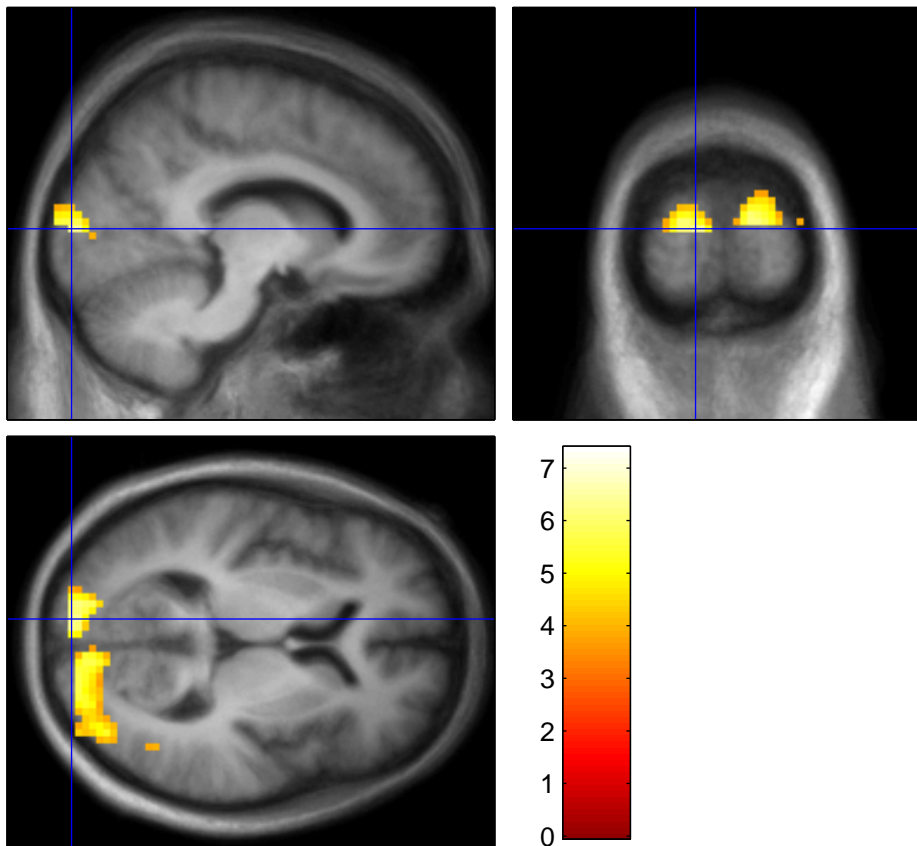
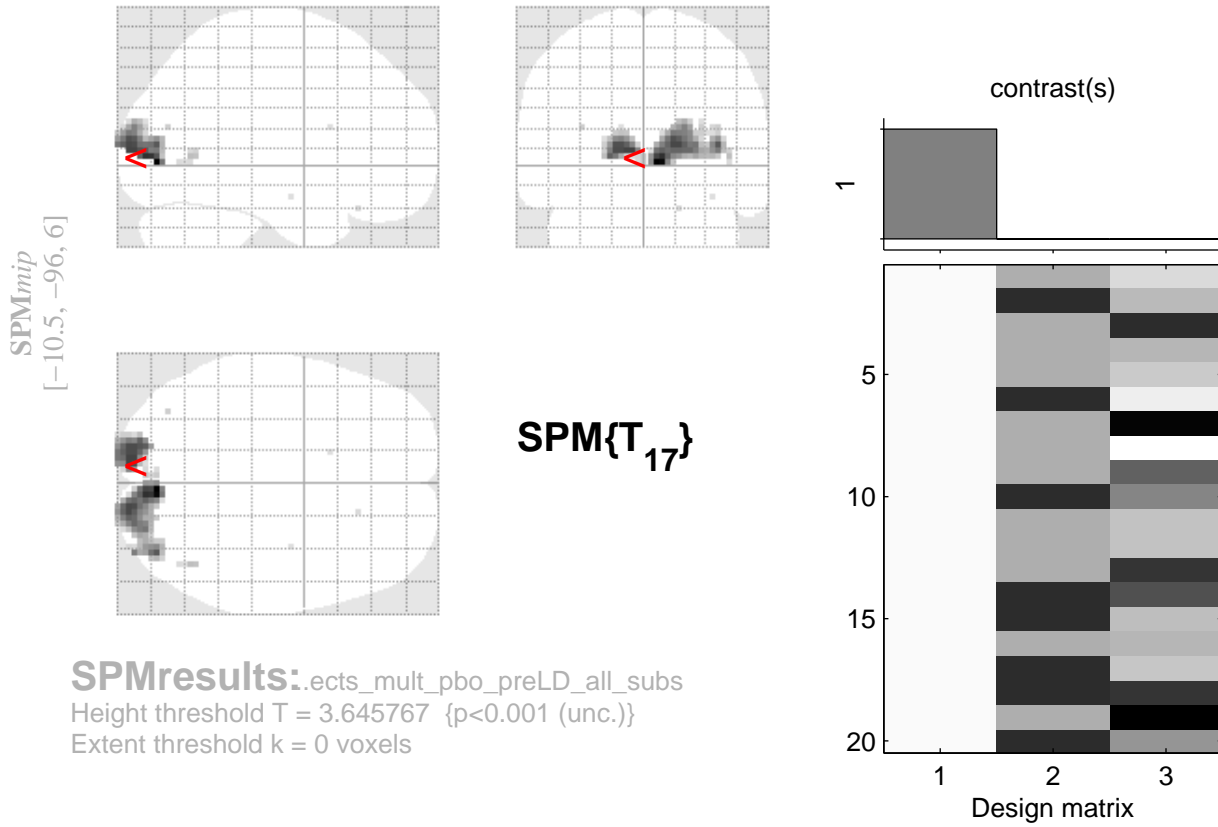


SPM{T₁₇}

SPMresults: .ects_mult_pbo_preLD_all_subs
Height threshold T = 3.645767 {p<0.001 (unc.)}
Extent threshold k = 0 voxels

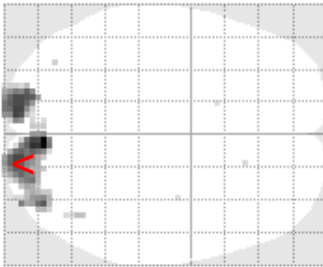
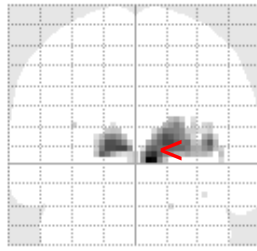
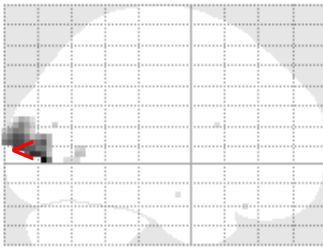


check increases MULT 20 subs, preLD, pbo day only



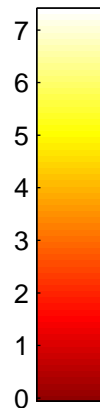
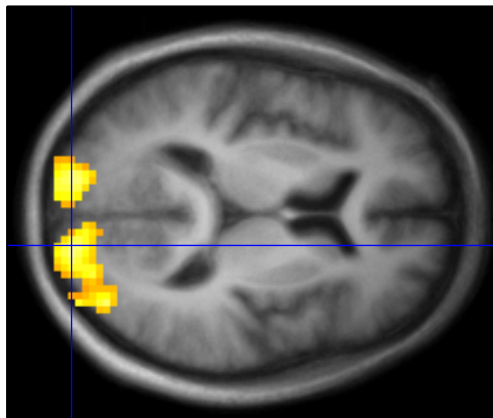
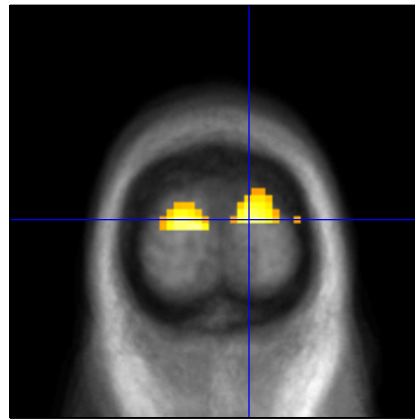
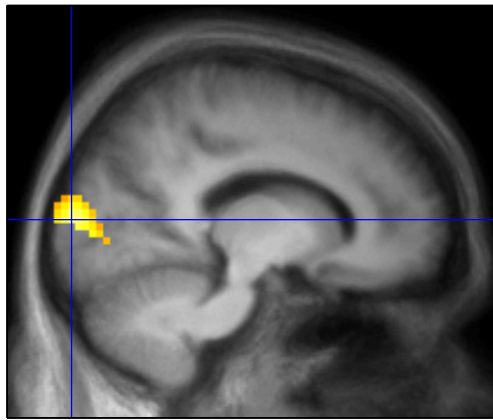
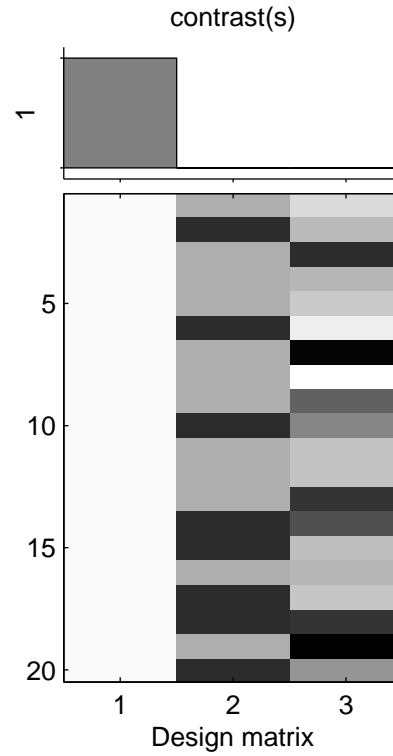
check increases MULT 20 subs, preLD, pbo day only

SPM_{mip}
[13.5, -96, 9]

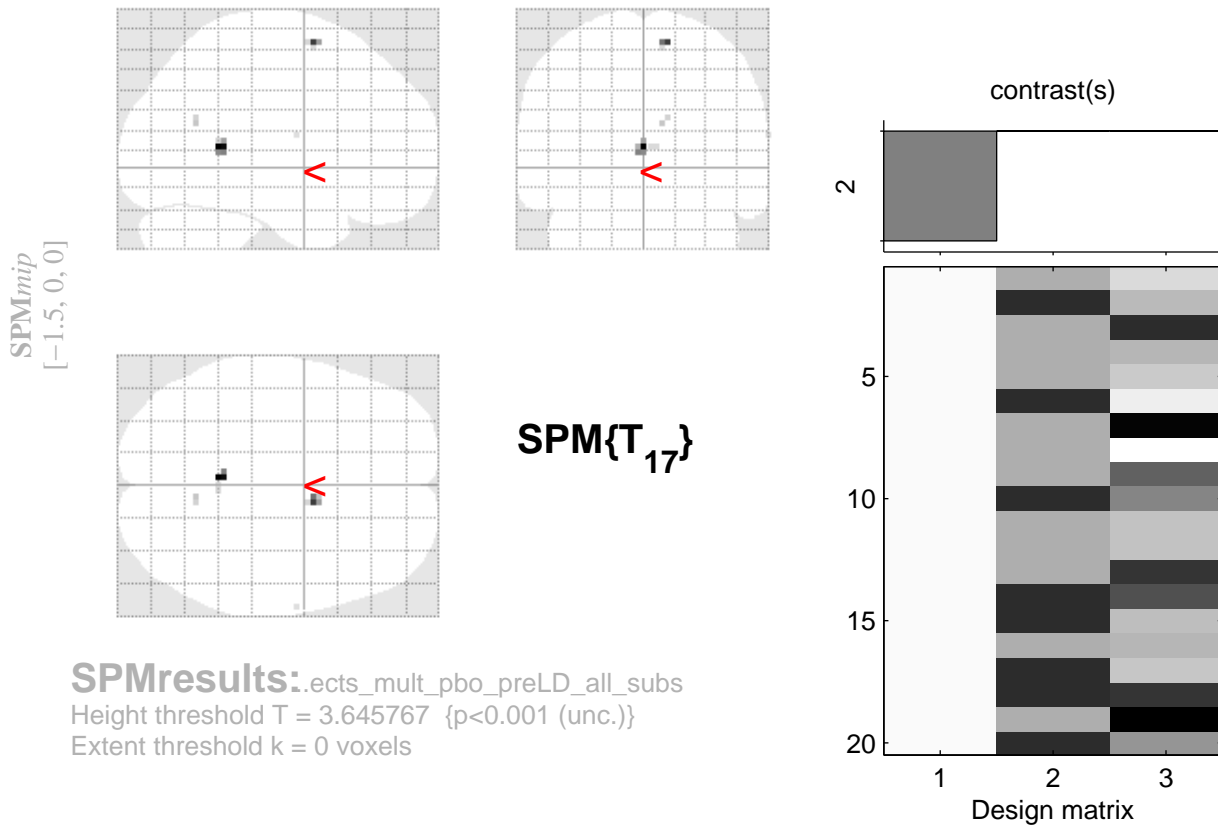


SPM{T₁₇}

SPMresults: .ects_mult_pbo_preLD_all_subs
Height threshold T = 3.645767 {p<0.001 (unc.)}
Extent threshold k = 0 voxels



check decreases MULT 20 subs preLD, pbo day only



Statistics: p -values adjusted for search volume

set-level		cluster-level			peak-level						mm mm mm		
p	c	$p_{FWE-corr}$	$q_{FDR-corr}$	k_E	p_{uncorr}	$p_{FWE-corr}$	$q_{FDR-corr}$	T	(Z_{\equiv})	p_{uncorr}			
0.977	4	0.802	0.596	10	0.182	0.917	0.983	4.52	3.61	0.000	-2	-48	9
		0.929	0.596	6	0.298	0.972	0.983	4.27	3.47	0.000	10	3	63
		0.993	0.693	2	0.559	1.000	0.983	3.75	3.16	0.001	8	-60	21
		0.998	0.693	1	0.693	1.000	0.983	3.66	3.10	0.001	64	-6	15

table shows 3 local maxima more than 8.0mm apart

Height threshold: $T = 3.65$, $p = 0.001$ (1.000) Degrees of freedom = [1.0, 17.0]
 Extent threshold: $k = 0$ voxels FWHM = 12.1 13.4 13.2 mm mm mm; 4.0 4.5 4.4 {voxels}
 Expected voxels per cluster, $\langle k \rangle = 5.987$ Volume: 1294110 = 47930 voxels = 543.1 resels
 Expected number of clusters, $\langle c \rangle = 8.88$ Voxel size: 3.0 3.0 3.0 mm mm mm; (resel = 79.30 voxels)
 FWEp: 7.013, FDRp: Inf, FWEc: Inf, FDRc: Inf