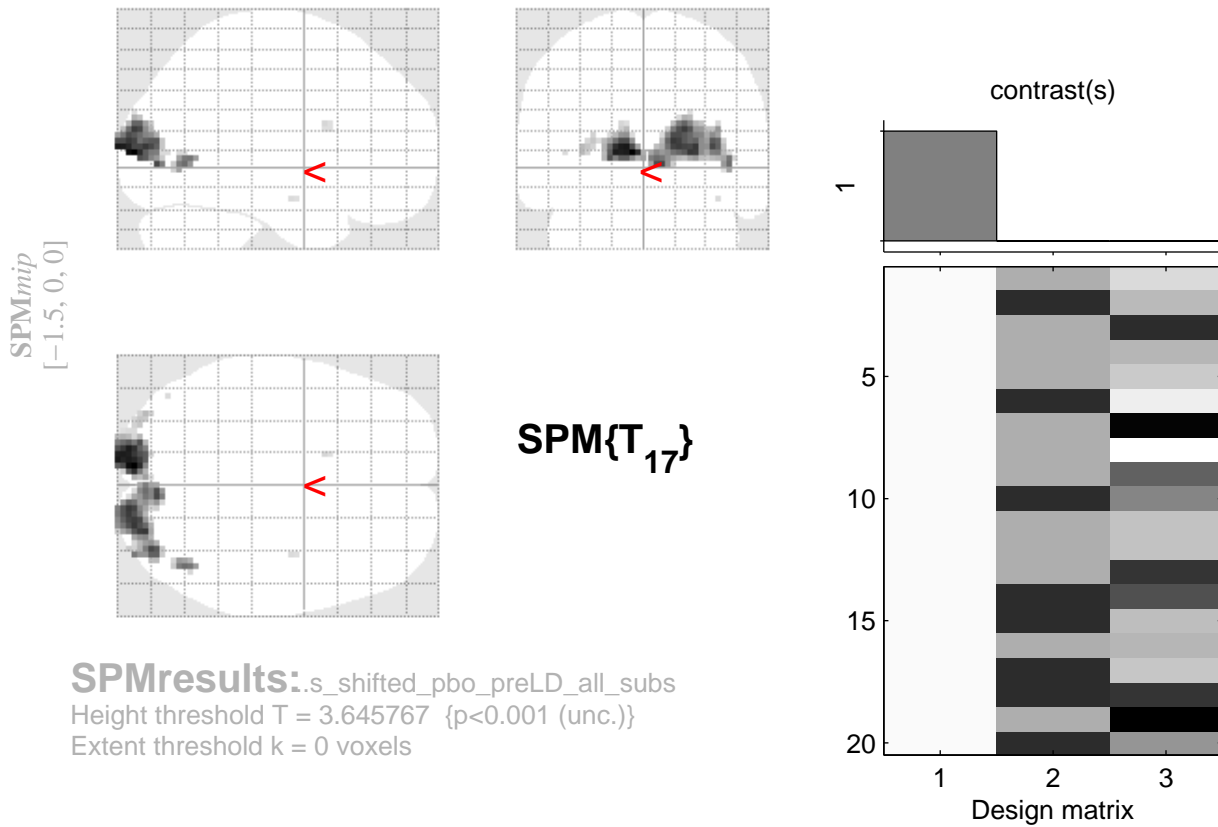


# check increases SHIFT 20 subs preLD, pbo day



**SPMresults:** :s\_shifted\_pbo\_preLD\_all\_subs  
 Height threshold  $T = 3.645767$  { $p < 0.001$  (unc.)}  
 Extent threshold  $k = 0$  voxels

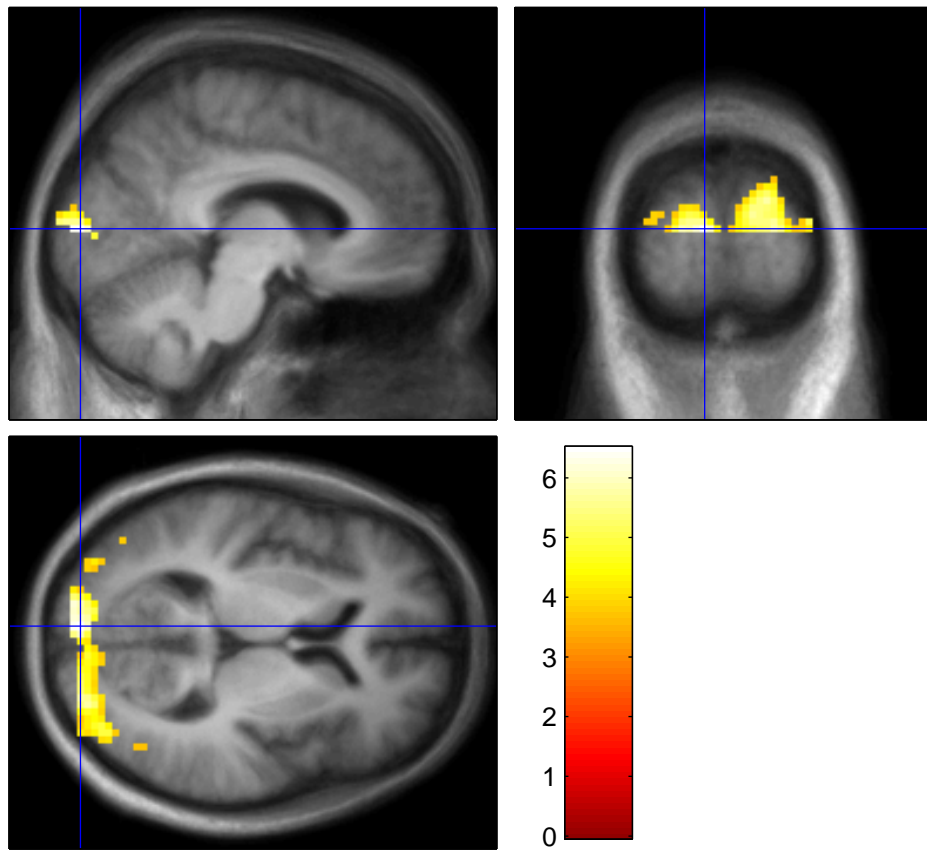
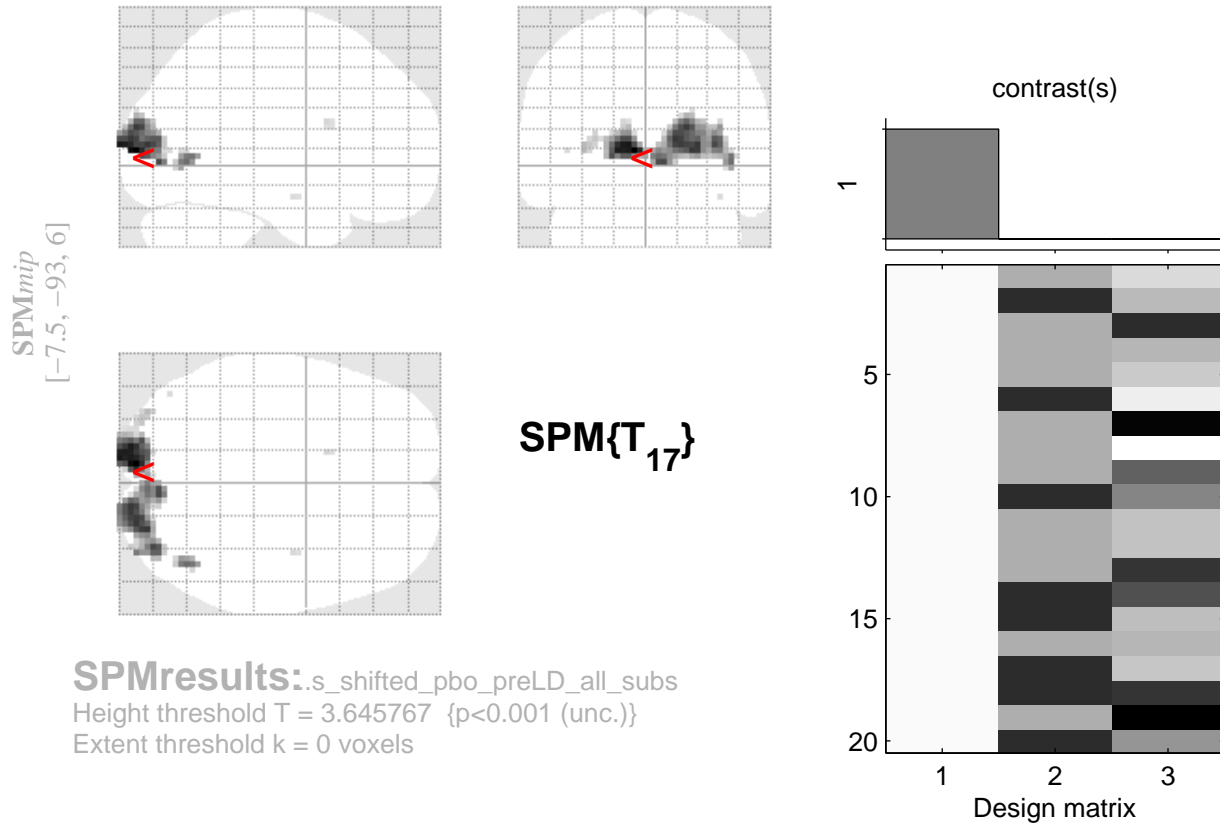
## Statistics: $p$ -values adjusted for search volume

set-level		cluster-level				peak-level					mm mm mm		
$p$	$c$	$p_{\text{FWE-corr}}$	$q_{\text{FDR-corr}}$	$k_E$	$p_{\text{uncorr}}$	$p_{\text{FWE-corr}}$	$q_{\text{FDR-corr}}$	$T$	$(Z_{\equiv})$	$p_{\text{uncorr}}$			
0.961	5	0.000	0.000	447	0.000	0.131	0.129	6.48	4.54	0.000	-8	-93	6
						0.217	0.129	6.11	4.38	0.000	-10	-102	9
						0.233	0.129	6.05	4.36	0.000	-16	-96	6
		0.396	0.132	21	0.053	0.691	0.184	5.06	3.90	0.000	44	-66	0
		0.973	0.629	4	0.377	1.000	0.916	3.76	3.16	0.001	-14	9	21
		0.994	0.677	2	0.541	1.000	0.916	3.73	3.14	0.001	38	-9	-18
		0.998	0.679	1	0.679	1.000	0.916	3.71	3.13	0.001	-44	-75	6

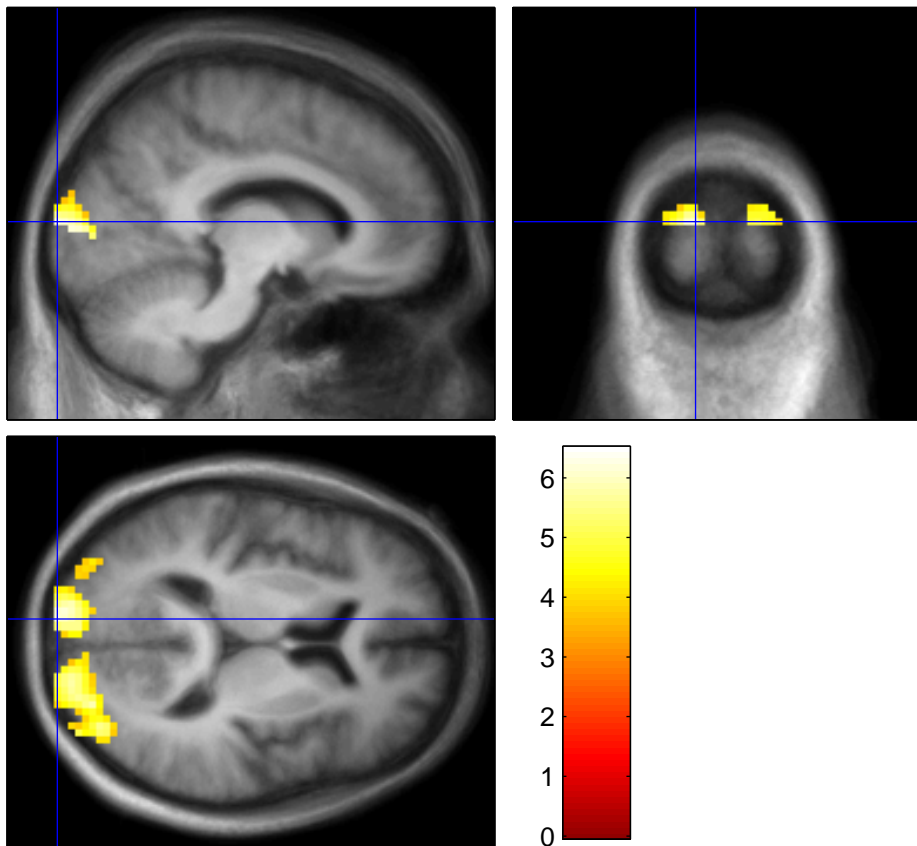
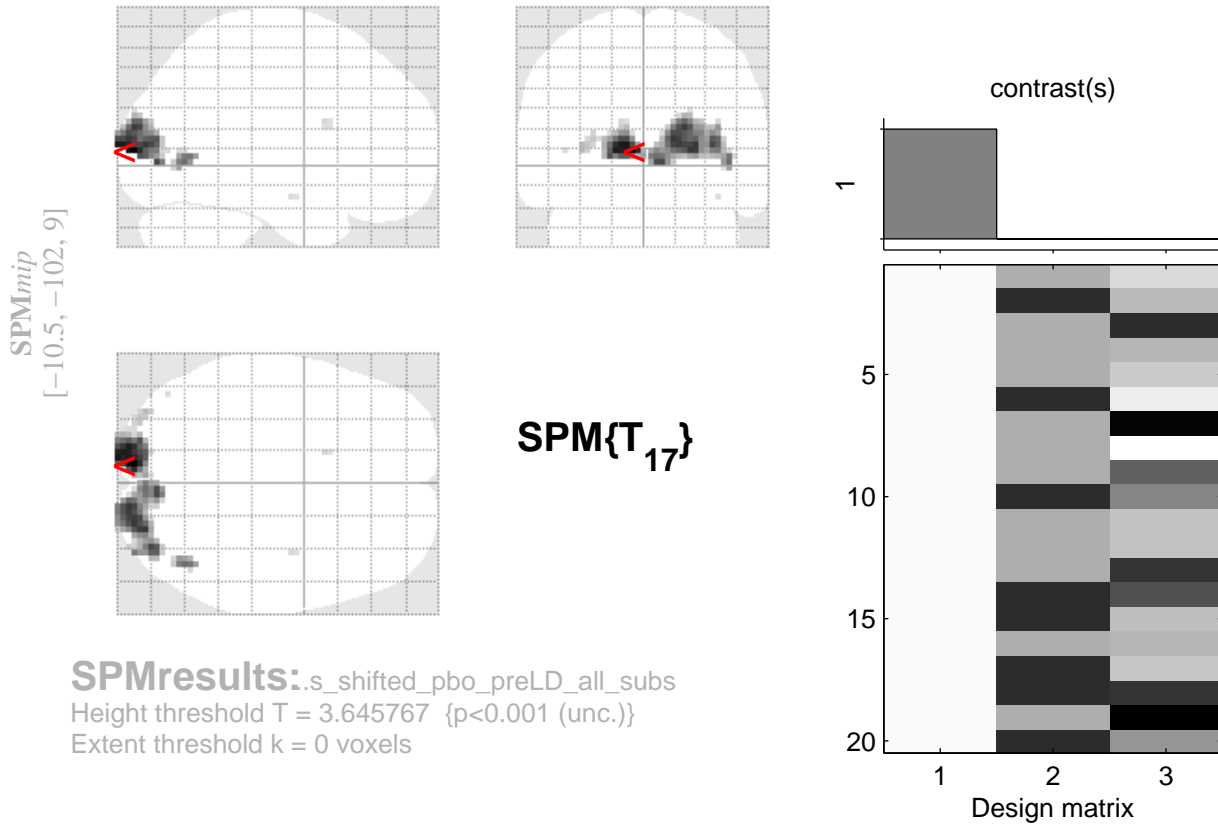
table shows 3 local maxima more than 8.0mm apart

Height threshold:  $T = 3.65$ ,  $p = 0.001$  (1.000)      Degrees of freedom = [1.0, 17.0]  
 Extent threshold:  $k = 0$  voxels      FWHM = 11.9 13.0 12.8 mm mm mm; 4.0 4.3 4.3 {voxels}  
 Expected voxels per cluster,  $\langle k \rangle = 5.528$       Volume: 1294110 = 47930 voxels = 588.2 resels  
 Expected number of clusters,  $\langle c \rangle = 9.56$       Voxel size: 3.0 3.0 3.0 mm mm mm; (resel = 73.21 voxels)  
 FWEp: 7.013, FDRp: Inf, FWEc: 447, FDRc: 447

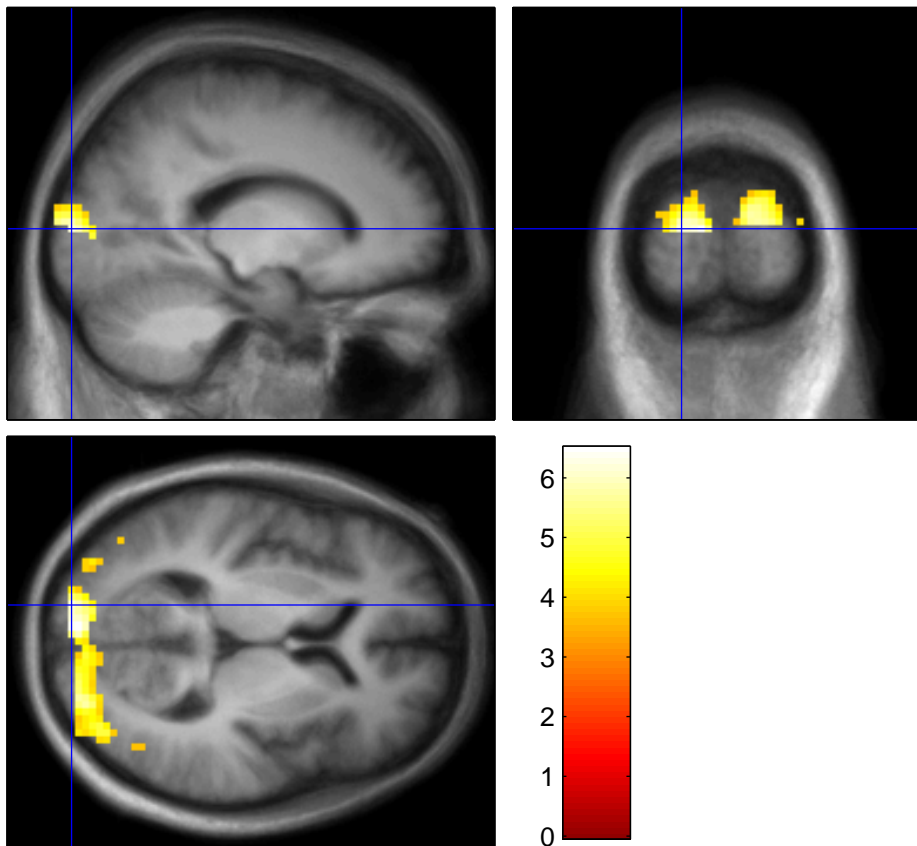
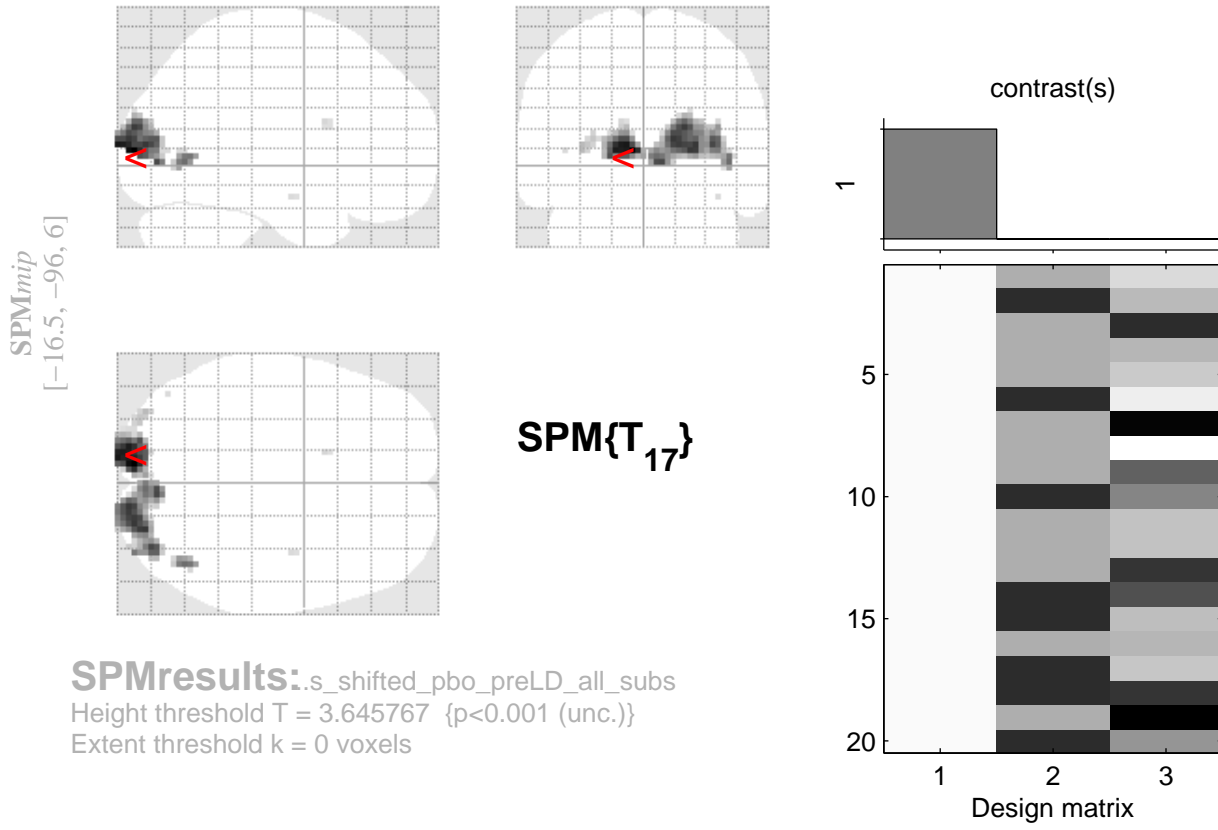
# check increases SHIFT 20 subs preLD, pbo day



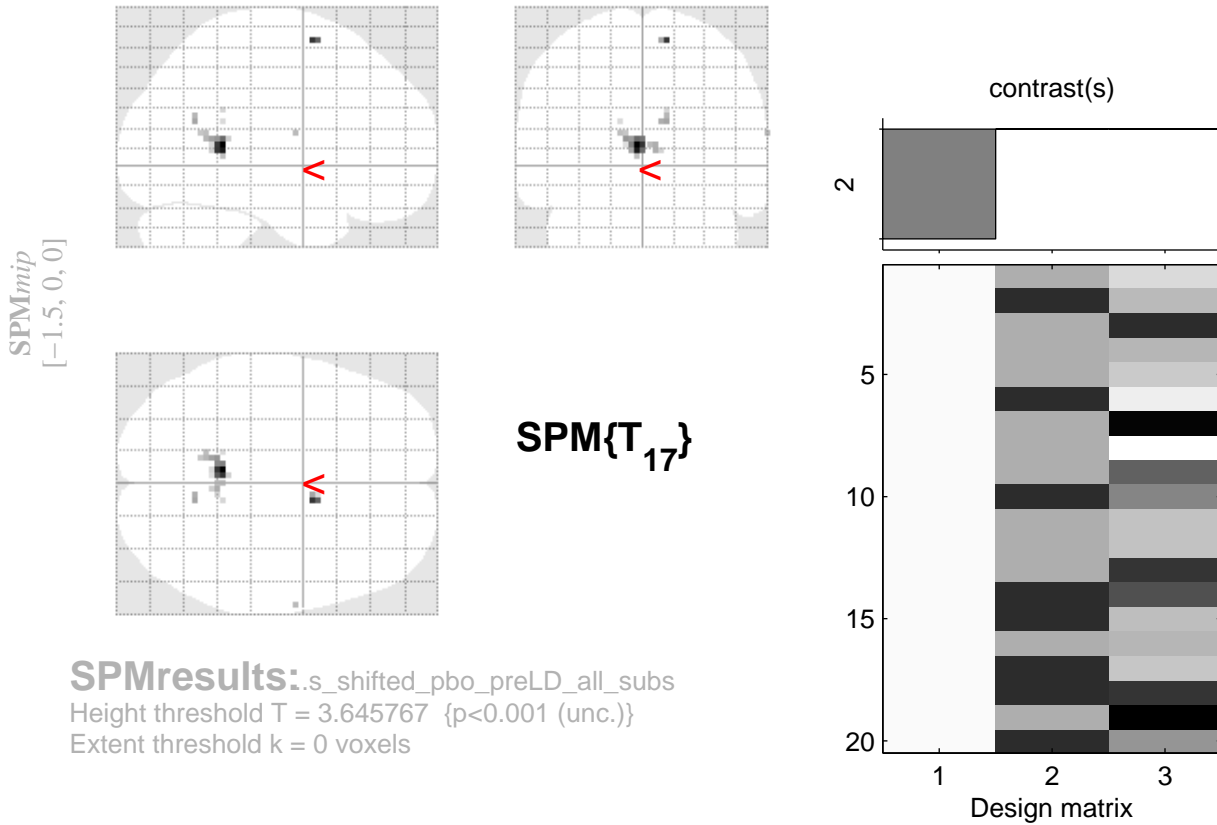
# check increases SHIFT 20 subs preLD, pbo day



# check increases SHIFT 20 subs preLD, pbo day



# check decreases SHIFT 20 subs preLD, pbo day



## Statistics: $p$ -values adjusted for search volume

set-level		cluster-level			peak-level						mm mm mm		
$p$	$c$	$p_{FWE-corr}$	$q_{FDR-corr}$	$k_E$	$p_{uncorr}$	$p_{FWE-corr}$	$q_{FDR-corr}$	$T$	$(Z_{\equiv})$	$p_{uncorr}$			
0.914	6	0.142	0.096	35	0.016	0.817	0.954	4.82	3.77	0.000	-4	-45	9
						0.999	0.954	3.91	3.25	0.001	4	-48	9
		0.973	0.679	4	0.377	0.928	0.954	4.53	3.62	0.000	10	3	63
		0.986	0.679	3	0.447	0.998	0.954	3.94	3.27	0.001	10	-60	21
		0.998	0.679	1	0.679	0.999	0.954	3.84	3.21	0.001	64	-6	15
		0.998	0.679	1	0.679	1.000	0.954	3.70	3.12	0.001	10	-45	27
		0.998	0.679	1	0.679	1.000	0.954	3.68	3.11	0.001	-14	-45	21

table shows 3 local maxima more than 8.0mm apart

Height threshold:  $T = 3.65$ ,  $p = 0.001$  (1.000)      Degrees of freedom = [1.0, 17.0]  
 Extent threshold:  $k = 0$  voxels      FWHM = 11.9 13.0 12.8 mm mm mm; 4.0 4.3 4.3 {voxels}  
 Expected voxels per cluster,  $\langle k \rangle = 5.528$       Volume: 1294110 = 47930 voxels = 588.2 resels  
 Expected number of clusters,  $\langle c \rangle = 9.56$       Voxel size: 3.0 3.0 3.0 mm mm mm; (resel = 73.21 voxels)  
 FWEp: 7.013, FDRp: Inf, FWEc: Inf, FDRc: Inf