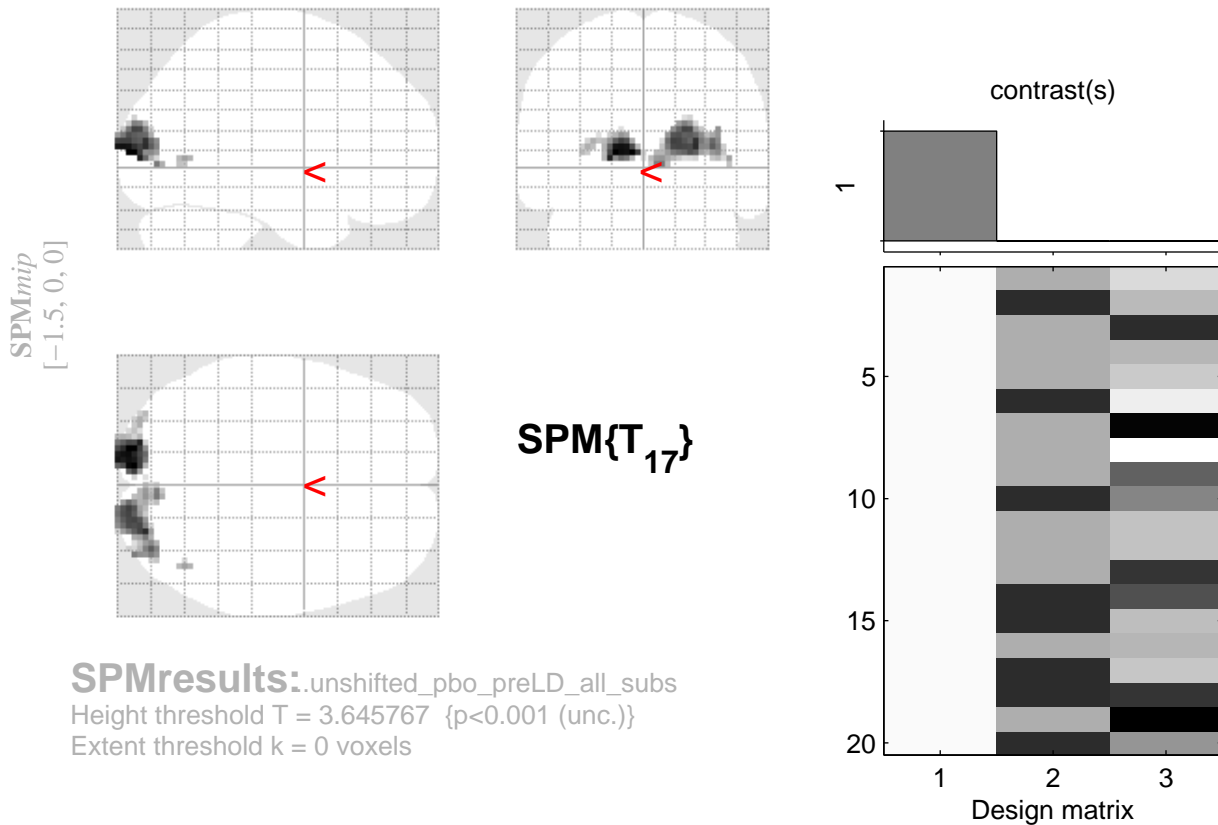


check increases UNSHIFT 20 subs, preLD, pbo day



SPMresults: .unshifted_pbo_preLD_all_subs
 Height threshold $T = 3.645767$ { $p < 0.001$ (unc.)}
 Extent threshold $k = 0$ voxels

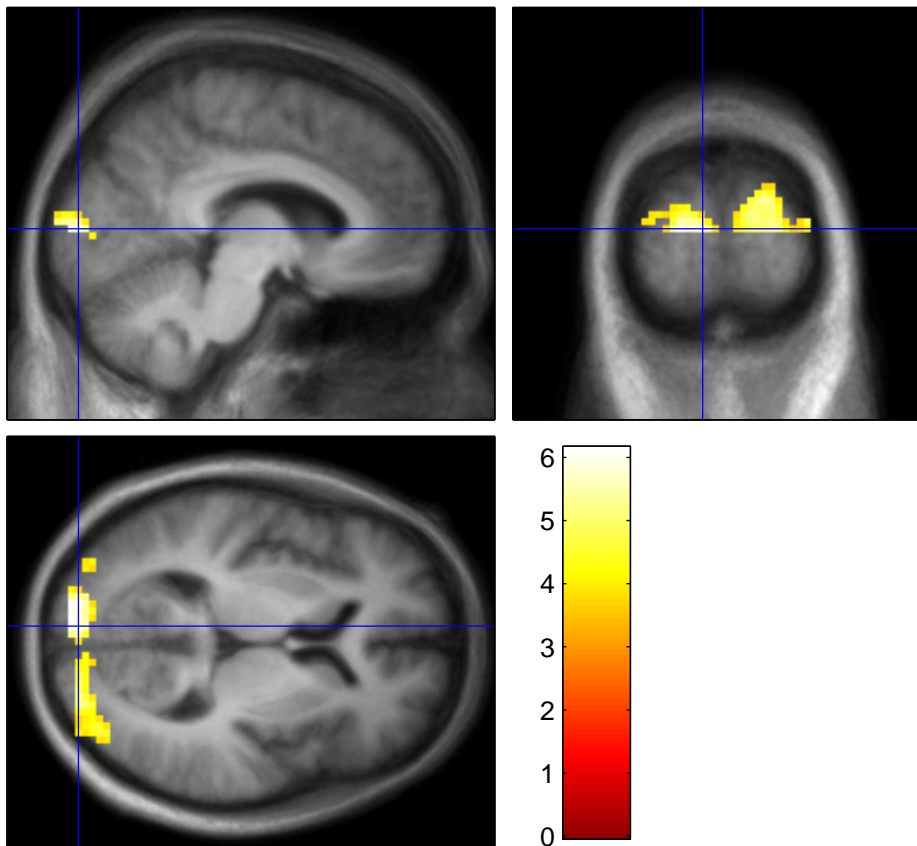
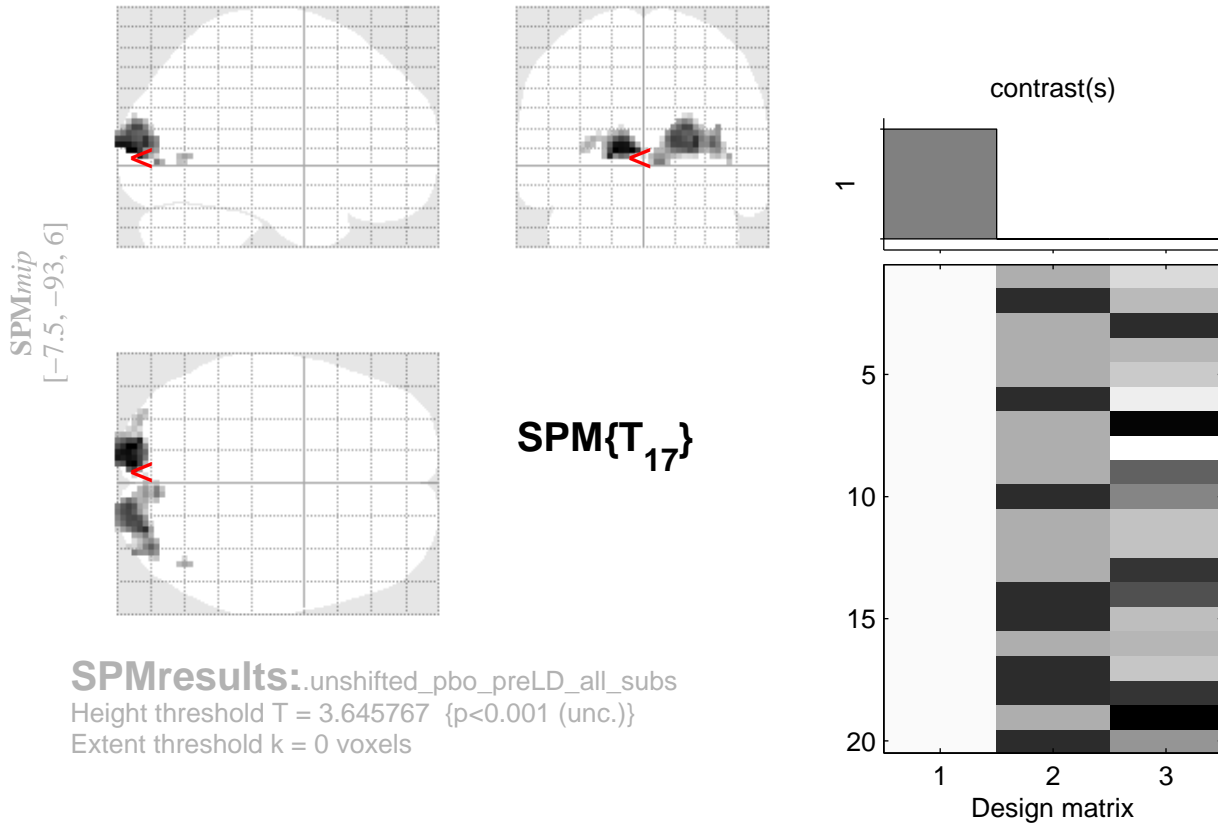
Statistics: p -values adjusted for search volume

set-level		cluster-level				peak-level					mm mm mm		
p	c	$p_{FWE-corr}$	$q_{FDR-corr}$	k_E	p_{uncorr}	$p_{FWE-corr}$	$q_{FDR-corr}$	T	(Z_{\equiv})	p_{uncorr}			
0.986	3	0.002	0.000	119	0.000	0.178	0.174	6.13	4.40	0.000	-8	-93	6
						0.180	0.174	6.12	4.39	0.000	-16	-93	6
						0.972	0.482	4.20	3.43	0.000	-28	-90	12
		0.000	0.000	247	0.000	0.354	0.188	5.59	4.16	0.000	26	-87	9
						0.451	0.188	5.39	4.06	0.000	14	-96	12
						0.476	0.188	5.34	4.04	0.000	20	-93	18
		0.926	0.325	6	0.325	0.950	0.436	4.32	3.50	0.000	44	-66	3

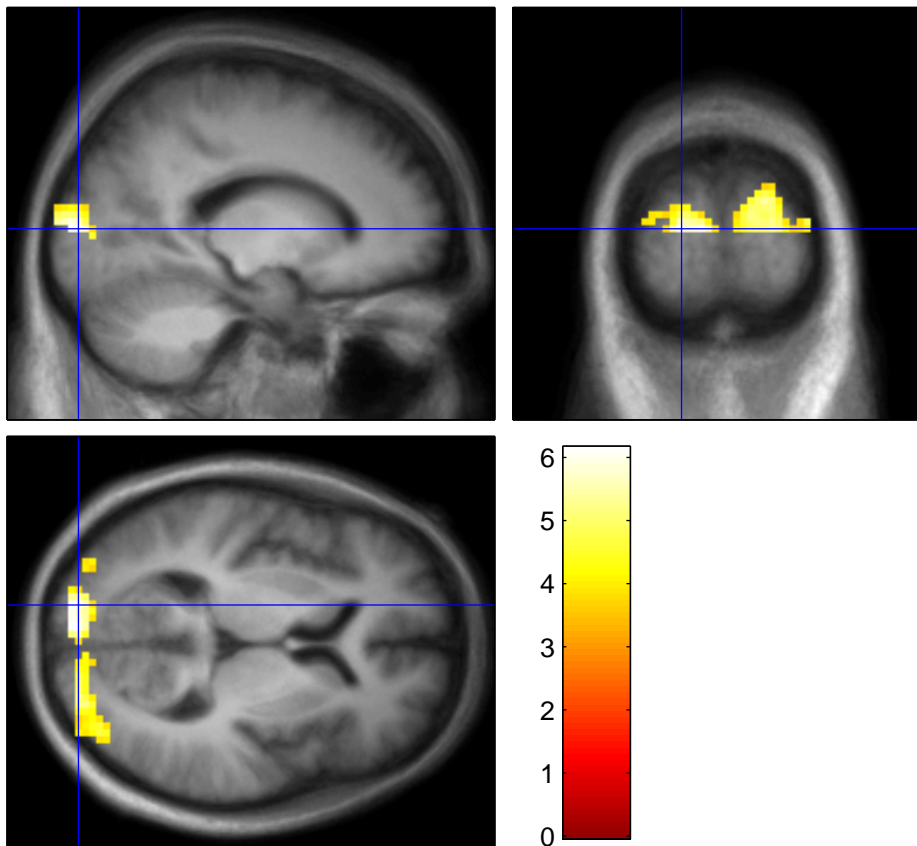
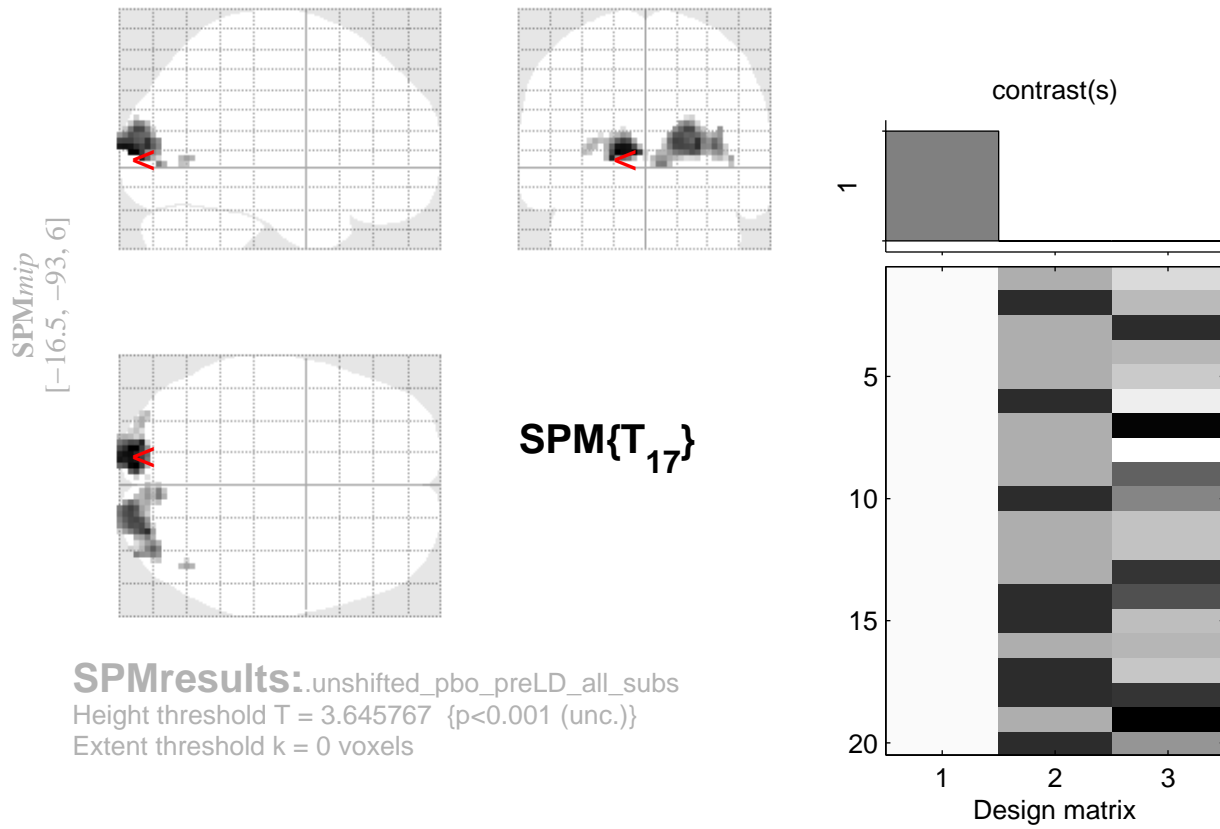
table shows 3 local maxima more than 8.0mm apart

Height threshold: $T = 3.65$, $p = 0.001$ (1.000) Degrees of freedom = [1.0, 17.0]
 Extent threshold: $k = 0$ voxels FWHM = 12.7 13.8 13.7 mm mm mm; 4.2 4.6 4.6 {voxels}
 Expected voxels per cluster, $\langle k \rangle = 6.691$ Volume: 1294110 = 47930 voxels = 486.0 resels
 Expected number of clusters, $\langle c \rangle = 8.00$ Voxel size: 3.0 3.0 3.0 mm mm mm; (resel = 88.62 voxels)
 FWEp: 7.013, FDRp: Inf, FWEc: 119, FDRc: 119

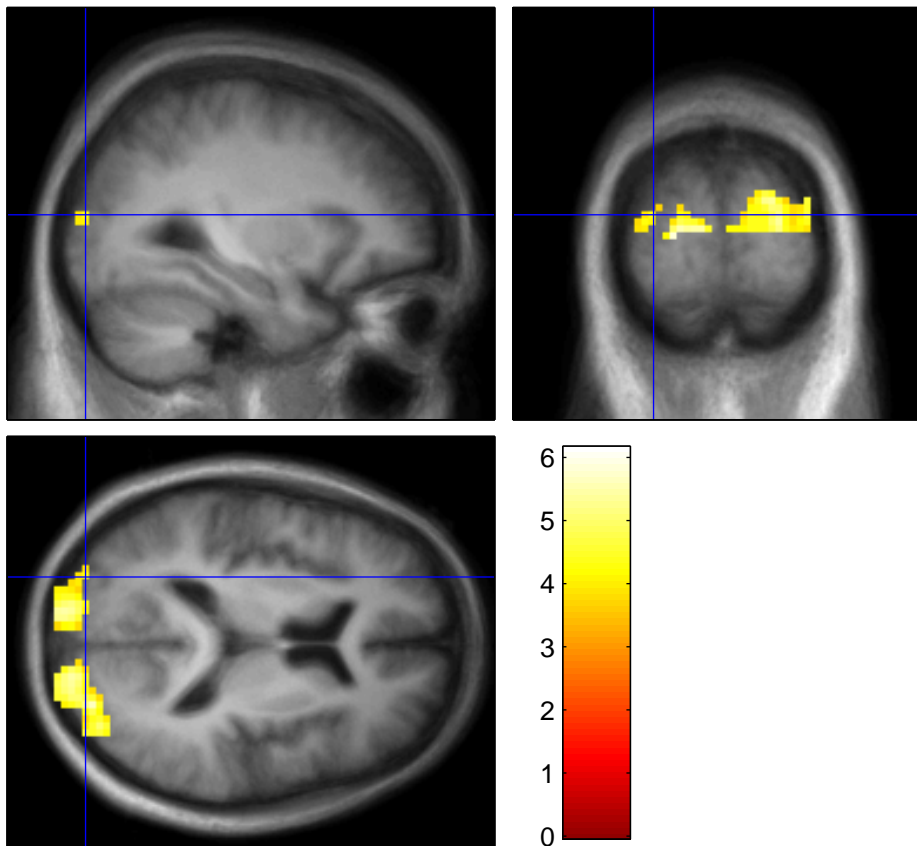
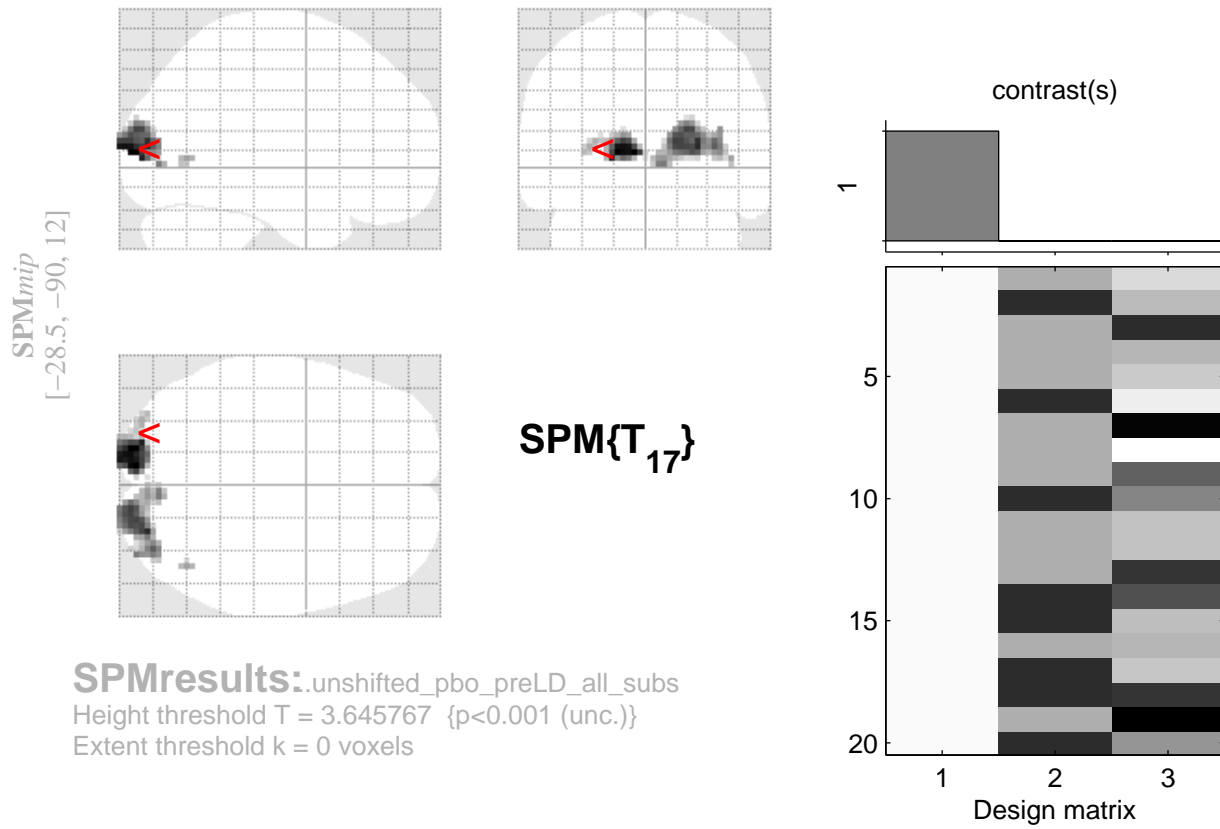
check increases UNSHIFT 20 subs, preLD, pbo day



check increases UNSHIFT 20 subs, preLD, pbo day

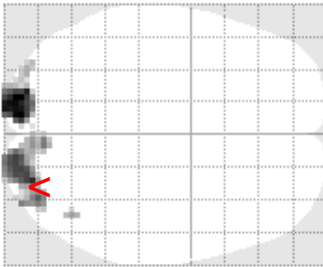
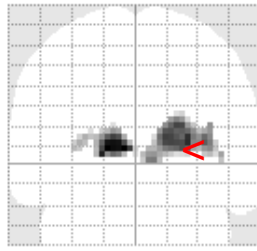
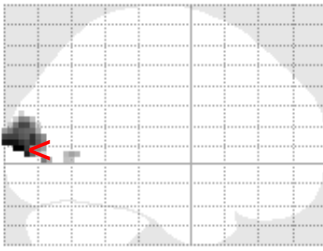


check increases UNSHIFT 20 subs, preLD, pbo day



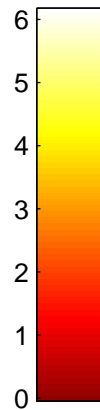
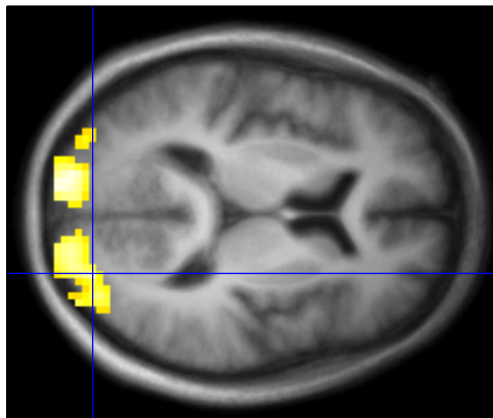
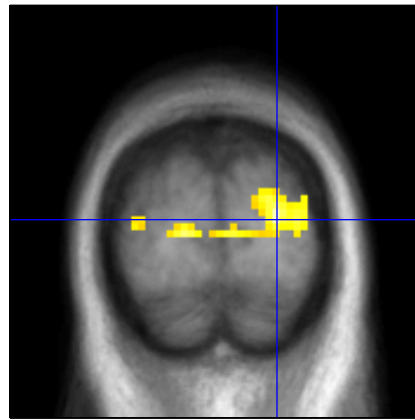
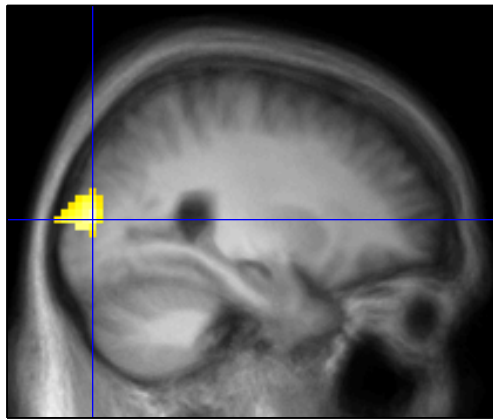
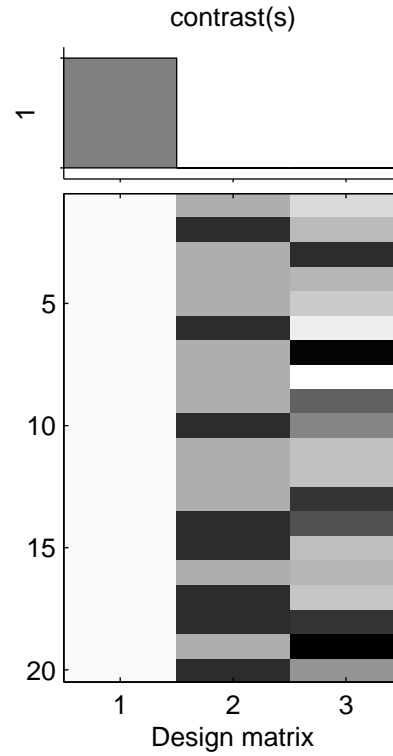
check increases UNSHIFT 20 subs, preLD, pbo day

SPM_{mip}
[25.5, -87, 9]



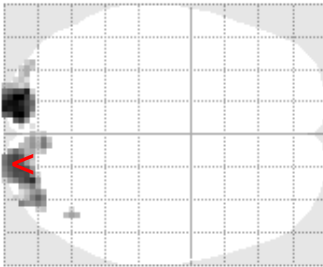
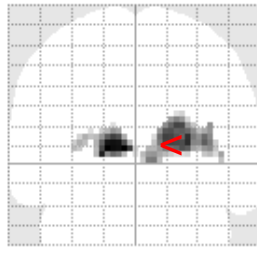
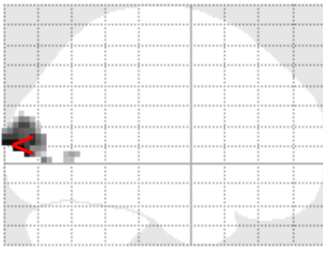
SPM{T₁₇}

SPMresults:.unshifted_pbo_preLD_all_subs
Height threshold T = 3.645767 {p<0.001 (unc.)}
Extent threshold k = 0 voxels



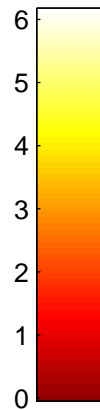
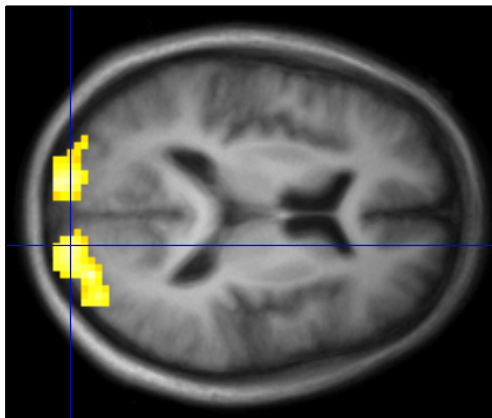
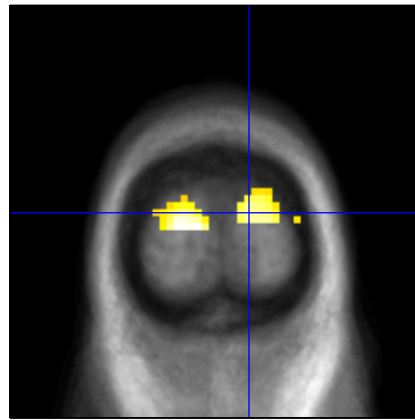
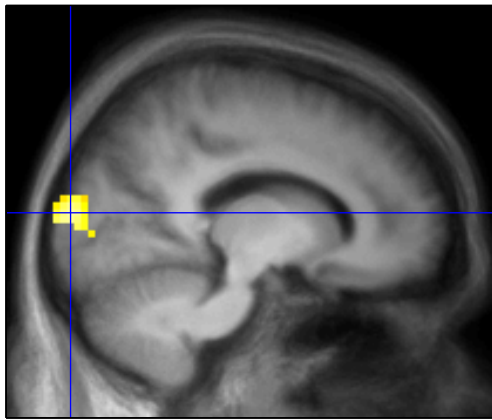
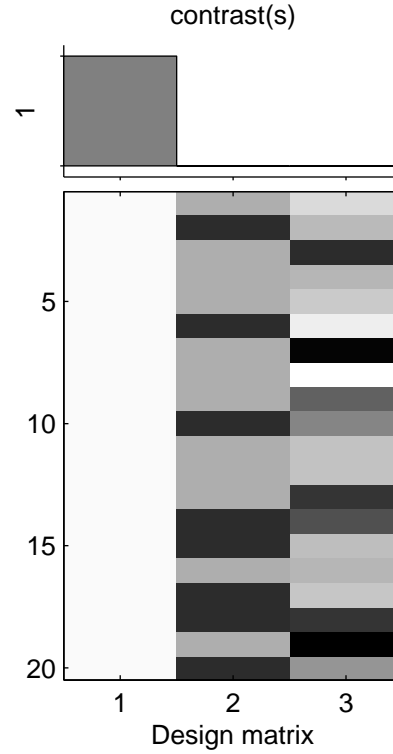
check increases UNSHIFT 20 subs, preLD, pbo day

SPM_{mip}
[13.5, -96, 12]



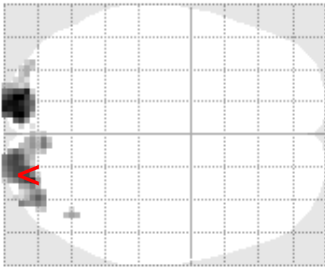
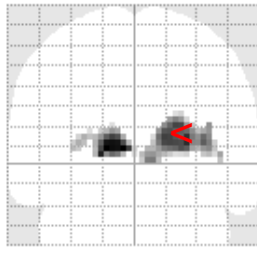
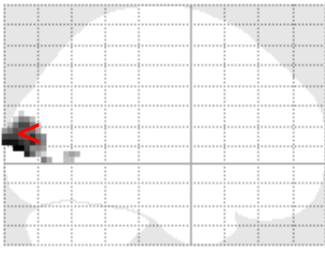
SPM{T₁₇}

SPMresults:.unshifted_pbo_preLD_all_subs
Height threshold T = 3.645767 {p<0.001 (unc.)}
Extent threshold k = 0 voxels



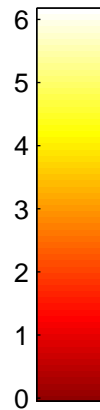
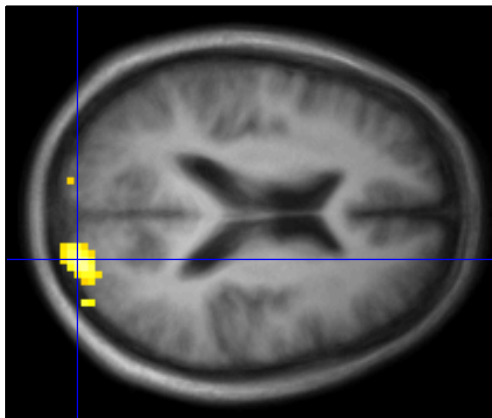
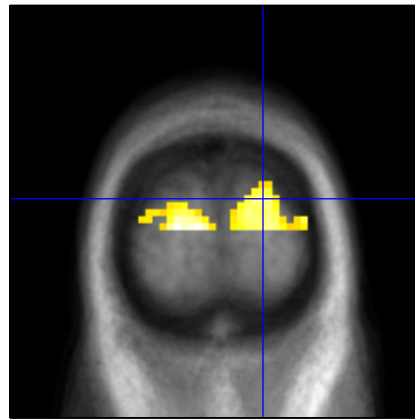
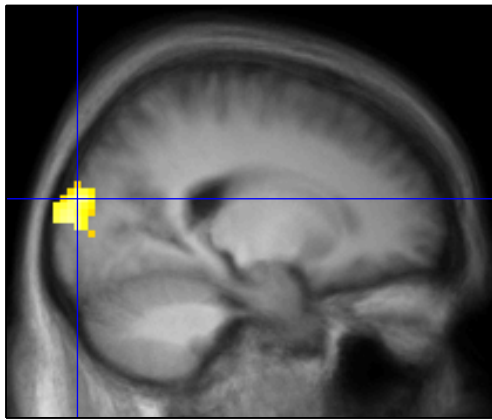
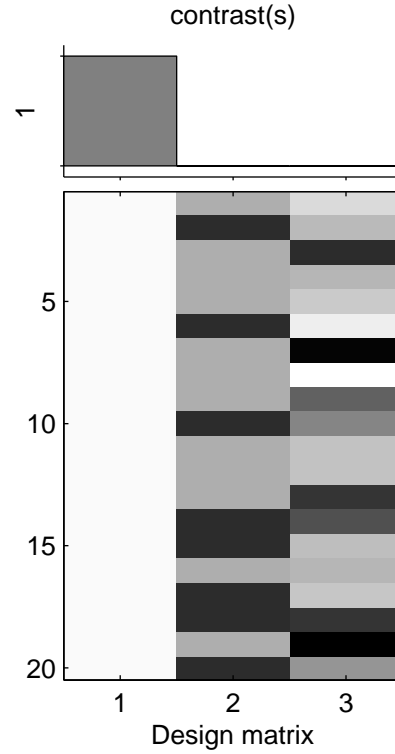
check increases UNSHIFT 20 subs, preLD, pbo day

SPM_{mip}
[19.5, -93, 18]

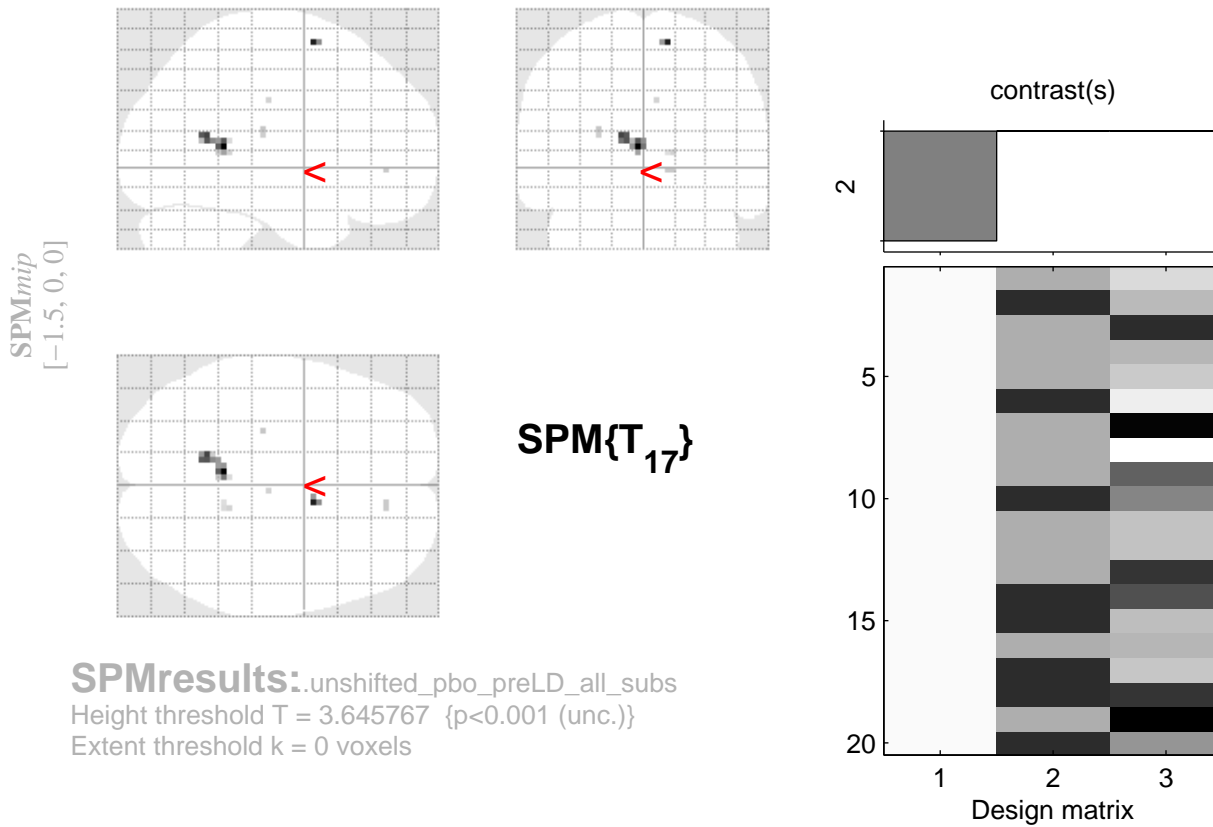


SPM{T₁₇}

SPMresults:.unshifted_pbo_preLD_all_subs
Height threshold T = 3.645767 {p<0.001 (unc.)}
Extent threshold k = 0 voxels



check decreases UNSHIFT 20 subs preLD, pbo only



Statistics: p -values adjusted for search volume

set-level		cluster-level				peak-level					mm mm mm		
p	c	$p_{FWE-corr}$	$q_{FDR-corr}$	k_E	p_{uncorr}	$p_{FWE-corr}$	$q_{FDR-corr}$	T	(Z_{\equiv})	p_{uncorr}			
0.809	6	0.399	0.382	23	0.064	0.972	0.958	4.20	3.43	0.000	-4	-45	9
						0.991	0.958	4.02	3.32	0.000	-14	-54	15
		0.981	0.699	3	0.493	0.983	0.958	4.12	3.38	0.000	10	3	63
		0.991	0.699	2	0.582	0.999	0.958	3.71	3.13	0.001	-26	-24	18
		0.991	0.699	2	0.582	0.999	0.958	3.70	3.13	0.001	10	42	-3
		0.997	0.711	1	0.711	1.000	0.958	3.68	3.11	0.001	4	-21	33
		0.981	0.699	3	0.493	1.000	0.958	3.68	3.11	0.001	14	-42	6

table shows 3 local maxima more than 8.0mm apart

Height threshold: $T = 3.65$, $p = 0.001$ (1.000) Degrees of freedom = [1.0, 17.0]
 Extent threshold: $k = 0$ voxels FWHM = 12.7 13.8 13.7 mm mm mm; 4.2 4.6 4.6 {voxels}
 Expected voxels per cluster, $\langle k \rangle = 6.691$ Volume: 1294110 = 47930 voxels = 486.0 resels
 Expected number of clusters, $\langle c \rangle = 8.00$ Voxel size: 3.0 3.0 3.0 mm mm mm; (resel = 88.62 voxels)
 FWEp: 7.013, FDRp: Inf, FWEc: Inf, FDRc: Inf