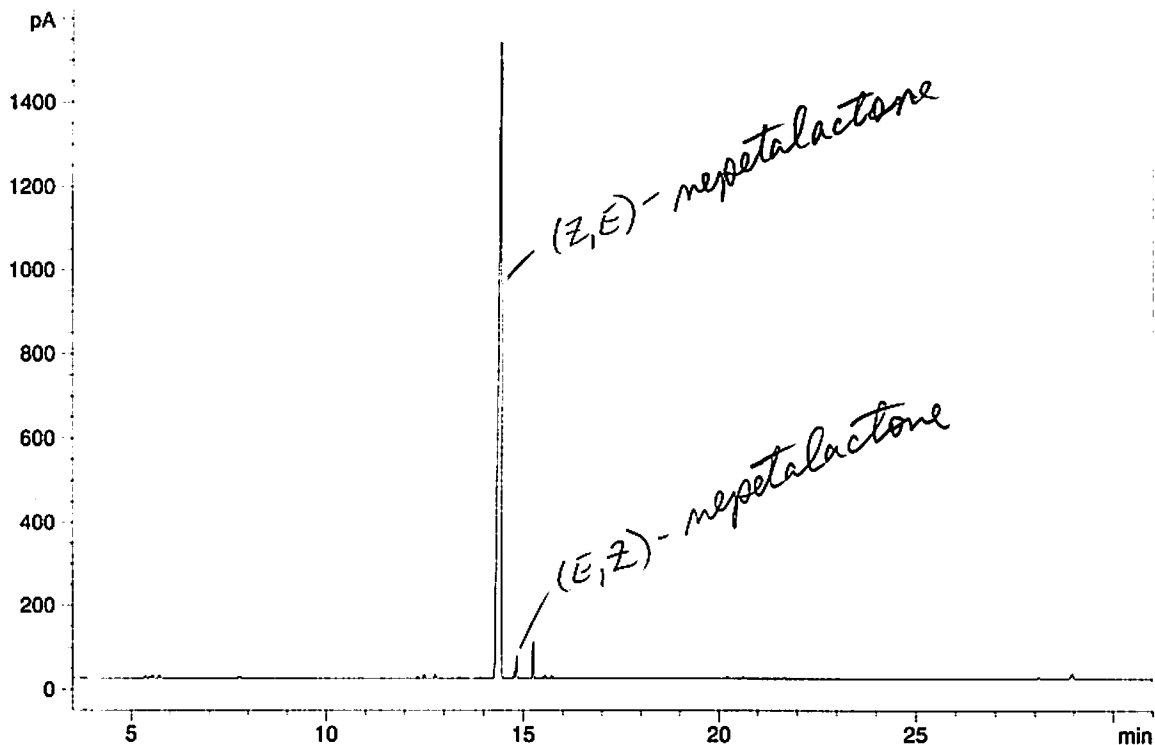


inj. 1.5ul Nepeta cataria 2nd leaf extract (/50ul CH2Cl2), DB-5. Note: From plant grown in our greenhouse; filter paper rubbing.

```

=====
Injection Date   : 5/28/2008 2:01:16 PM
Sample Name      : Nepeta cataria
Acq. Operator   : Aldrich
Vial             : -
Inj              : 1
Inj Volume      : Manually

Method          : C:\HPCHEM\1\METHODS\DBLESS1.M
Last changed    : 2/29/2008 10:02:00 AM by Aldrich
2/29/07; editing new method for desired output
FID1 A, (NEPETAJA-05282.D)
    
```



=====
 Area Percent Report
 =====

```

Sorted By       : Signal
Multiplier      : 1.0000
Dilution        : 1.0000
    
```

Signal 1: FID1 A,

| Peak # | RetTime [min] | Type | Width [min] | Area [pA*s] | Height [pA] | Area % |
|--------|---------------|------|-------------|-------------|-------------|----------|
| 1 | 5.356 | PB | 0.0240 | 8.78574 | 5.68110 | 0.10085 |
| 2 | 5.470 | PV | 0.0243 | 6.94077 | 4.41408 | 0.07967 |
| 3 | 5.543 | VB | 0.0231 | 11.74346 | 7.55296 | 0.13480 |
| 4 | 5.716 | PB | 0.0248 | 12.14510 | 7.53389 | 0.13941 |
| 5 | 7.764 | PP | 0.0254 | 4.34185 | 2.61343 | 0.04984 |
| 6 | 12.329 | PB | 0.0298 | 5.45318 | 2.78975 | 0.06259 |
| 7 | 12.492 | BB | 0.0288 | 17.78157 | 9.52591 | 0.20410 |
| 8 | 12.770 | BB | 0.0273 | 18.38568 | 10.07146 | 0.21104 |
| 9 | 14.440 | BB | 0.0668 | 8208.72363 | 1524.32458 | 94.22245 |
| 10 | 14.768 | BV | 0.0282 | 29.38062 | 16.17481 | 0.33724 |
| 11 | 14.832 | VB | 0.0290 | 100.39045 | 53.29138 | 1.15231 |
| 12 | 15.251 | BB | 0.0298 | 163.45575 | 87.29059 | 1.87620 |
| 13 | 15.445 | BV | 0.0281 | 3.77907 | 2.08474 | 0.04338 |
| 14 | 15.494 | VV | 0.0269 | 3.75397 | 2.19825 | 0.04309 |
| 15 | 15.550 | VP | 0.0307 | 15.74674 | 8.10833 | 0.18075 |
| 16 | 15.724 | BB | 0.0303 | 13.53114 | 7.07726 | 0.15531 |

| Peak # | RetTime [min] | Type | Width [min] | Area [pA*s] | Height [pA] | Area % |
|--------|---------------|------|-------------|-------------|-------------|---------|
| 17 | 17.368 | PB | 0.0325 | 4.66588 | 2.22459 | 0.05356 |
| 18 | 20.209 | BB | 0.0288 | 9.97267 | 5.34009 | 0.11447 |
| 19 | 20.616 | PB | 0.0321 | 8.66736 | 4.19147 | 0.09949 |
| 20 | 20.691 | BB | 0.0318 | 3.88665 | 1.90400 | 0.04461 |
| 21 | 21.675 | PB | 0.0348 | 7.00172 | 3.16382 | 0.08037 |
| 22 | 28.941 | BB | 0.0701 | 53.53487 | 11.55540 | 0.61449 |

Totals : 8712.06786 1779.11192

Results obtained with enhanced integrator!

=====
*** End of Report ***

Data Path : D:\Aldrich\JA-08\
 Data File : JA081308-1.D
 Acq On : 13 Aug 2008 14:49
 Operator :
 Sample : 5 lab C. oculata males 20-29-days-old, no plant
 Misc : GC run JA0813_1.D; /abd. cuticle/CH2Cl2
 ALS Vial : 1 Sample Multiplier: 1

Integration Parameters: autoint1.e
 Integrator: ChemStation

Method : C:\msdchem\1\METHODS\Episesquithugene.M
 Title :

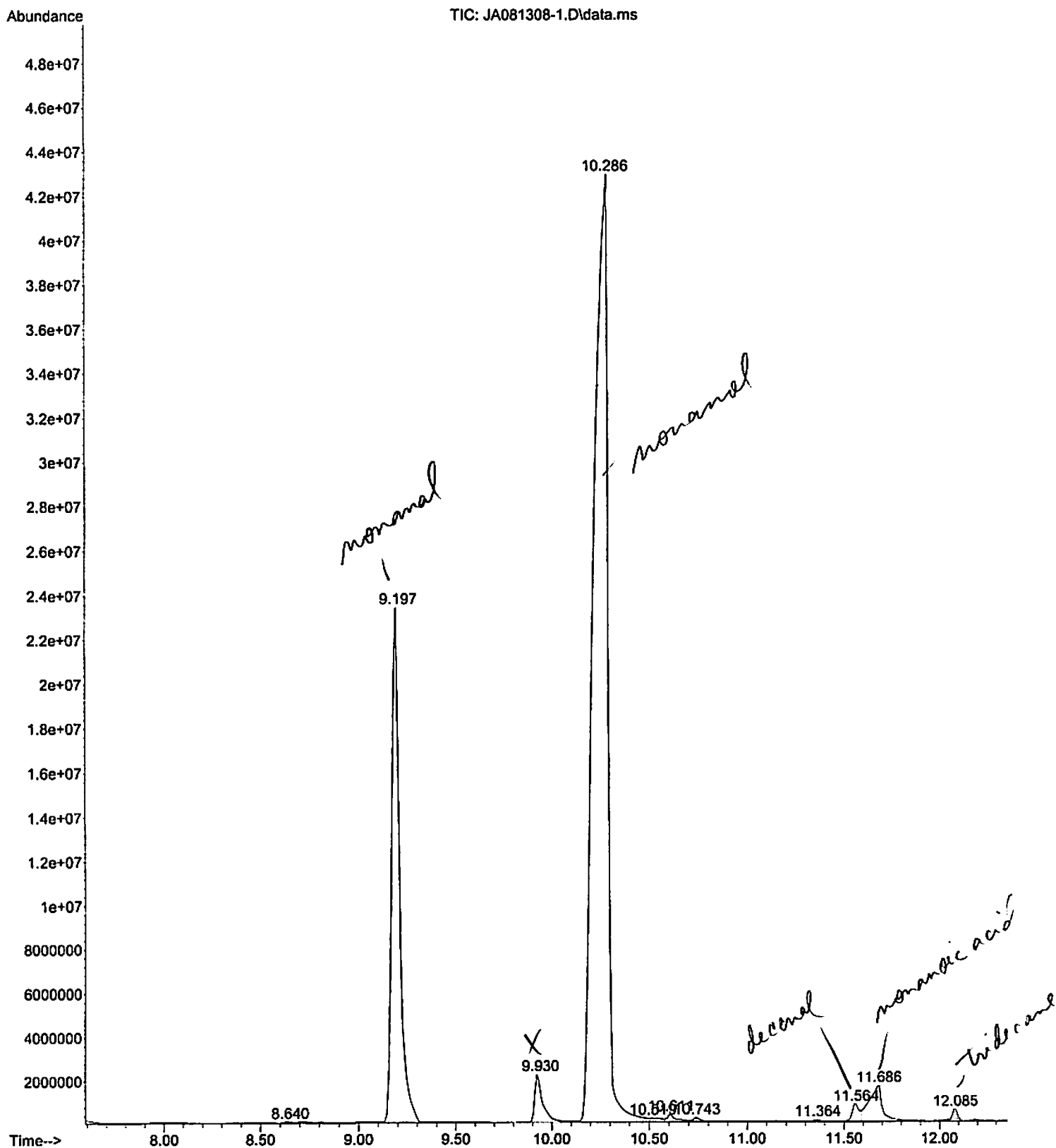
Signal : TIC: JA081308-1.D\data.ms

| peak # | R.T. min | first scan | max scan | last scan | PK TY | peak height | corr. area | corr. % max. | % of total |
|--------|----------|------------|----------|-----------|-------|-------------|------------|--------------|------------|
| 1 | 9.197 | 472 | 498 | 515 | BB | 22329243 | 651136710 | 30.81% | 21.367% - |
| X 2 | 9.930 | 562 | 570 | 585 | BV | 2121796 | 59621277 | 2.82% | 1.956% |
| 3 | 10.286 | 585 | 604 | 633 | VV | 41616730 | 2113187716 | 100.00% | 69.345% - |
| 4 | 11.564 | 720 | 729 | 732 | BV 2 | 785635 | 18315625 | 0.87% | 0.601% - |
| 5 | 11.686 | 732 | 741 | 762 | VB | 1669640 | 79383677 | 3.76% | 2.605% - |
| 6 | 12.085 | 765 | 780 | 785 | BV | 526286 | 10947517 | 0.52% | 0.359% - |
| 7 | 12.423 | 797 | 813 | 819 | BB | 693433 | 12703882 | 0.60% | 0.417% |
| 8 | 12.976 | 855 | 867 | 871 | BV 3 | 1112077 | 36947248 | 1.75% | 1.212% |
| 9 | 13.063 | 871 | 875 | 899 | VV 2 | 1611734 | 65125221 | 3.08% | 2.137% |

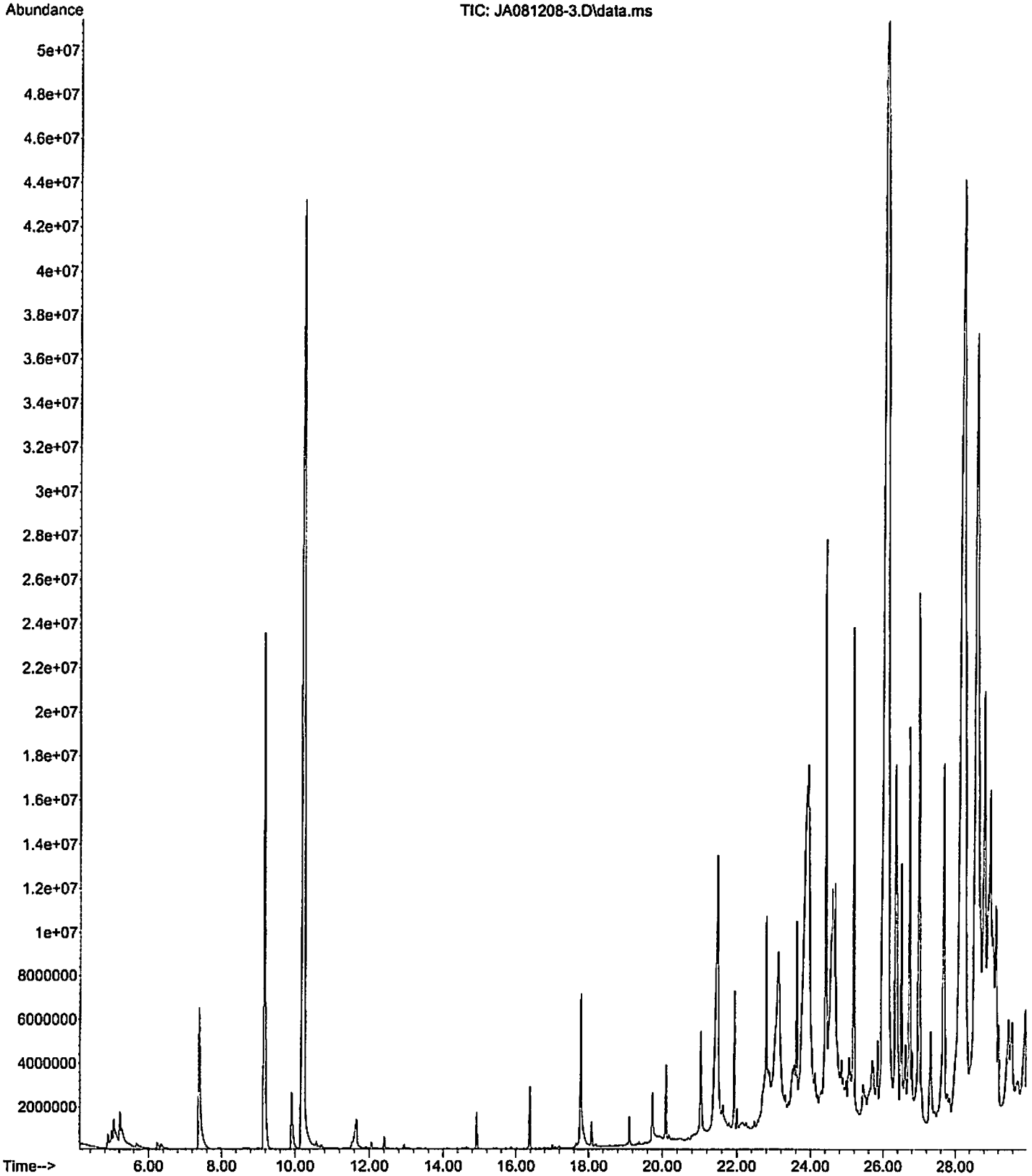
Sum of corrected areas: 3047368873

Episesquithugene.M Fri Jul 24 14:33:36 2009

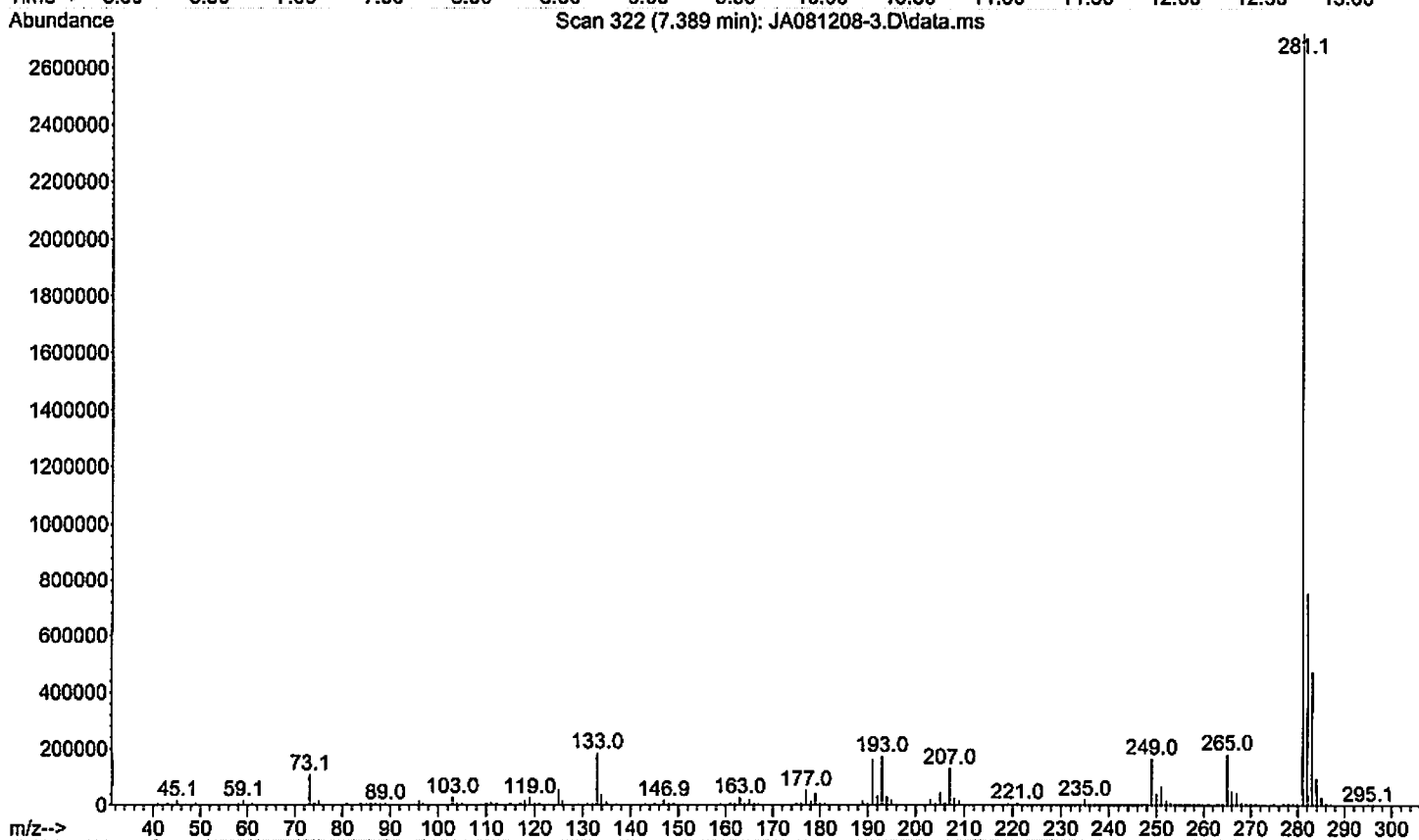
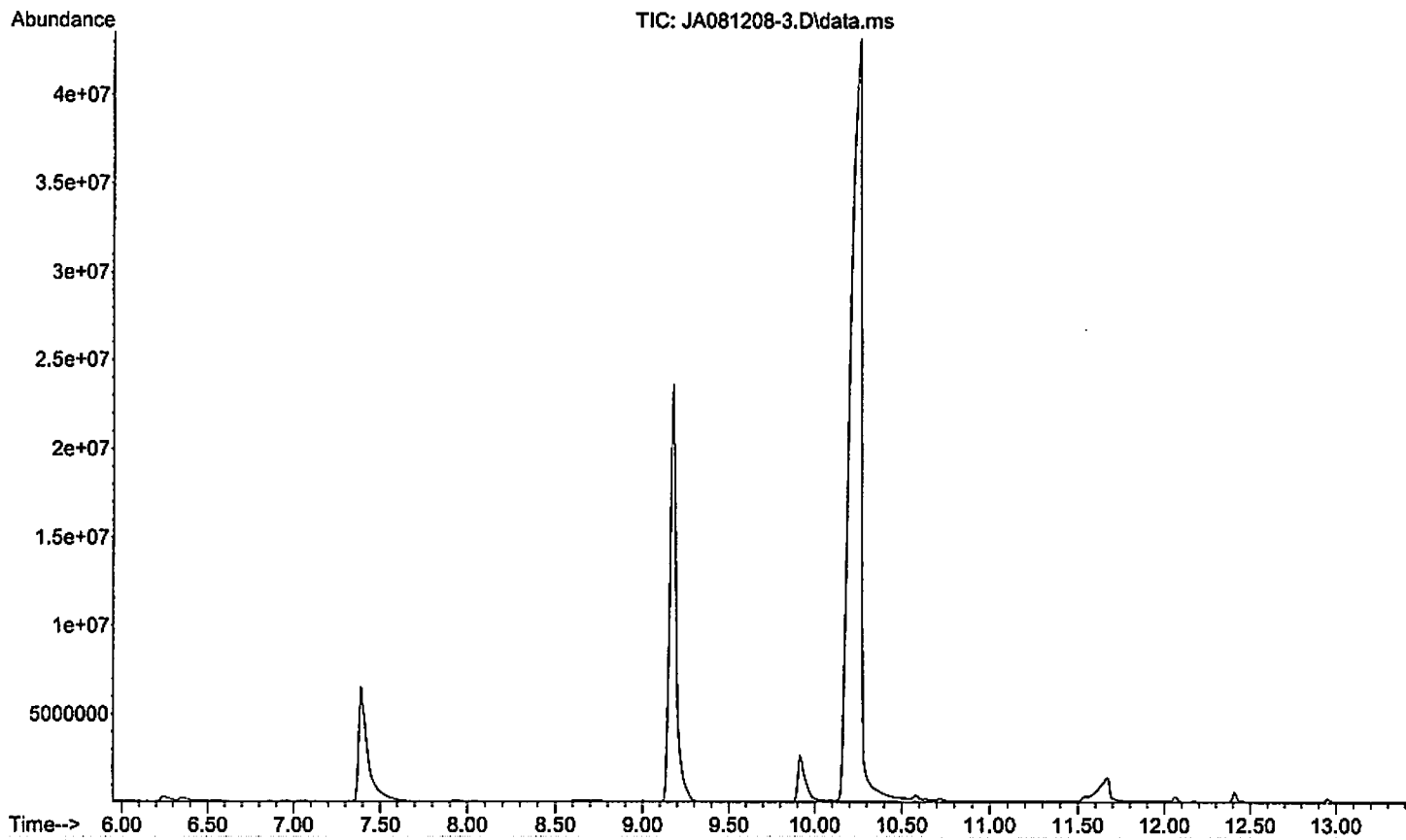
File :D:\Aldrich\JA-08\JA081308-1.D
Operator :
Acquired : 13 Aug 2008 14:49 using AcqMethod JA-50-280LESS.M
Instrument : Buba
Sample Name: 5 lab C. oculata males 20-29-days-old, no plant
Misc Info : GC run JA0813_1.D; /abd. cuticle/CH2C12
Vial Number: 1



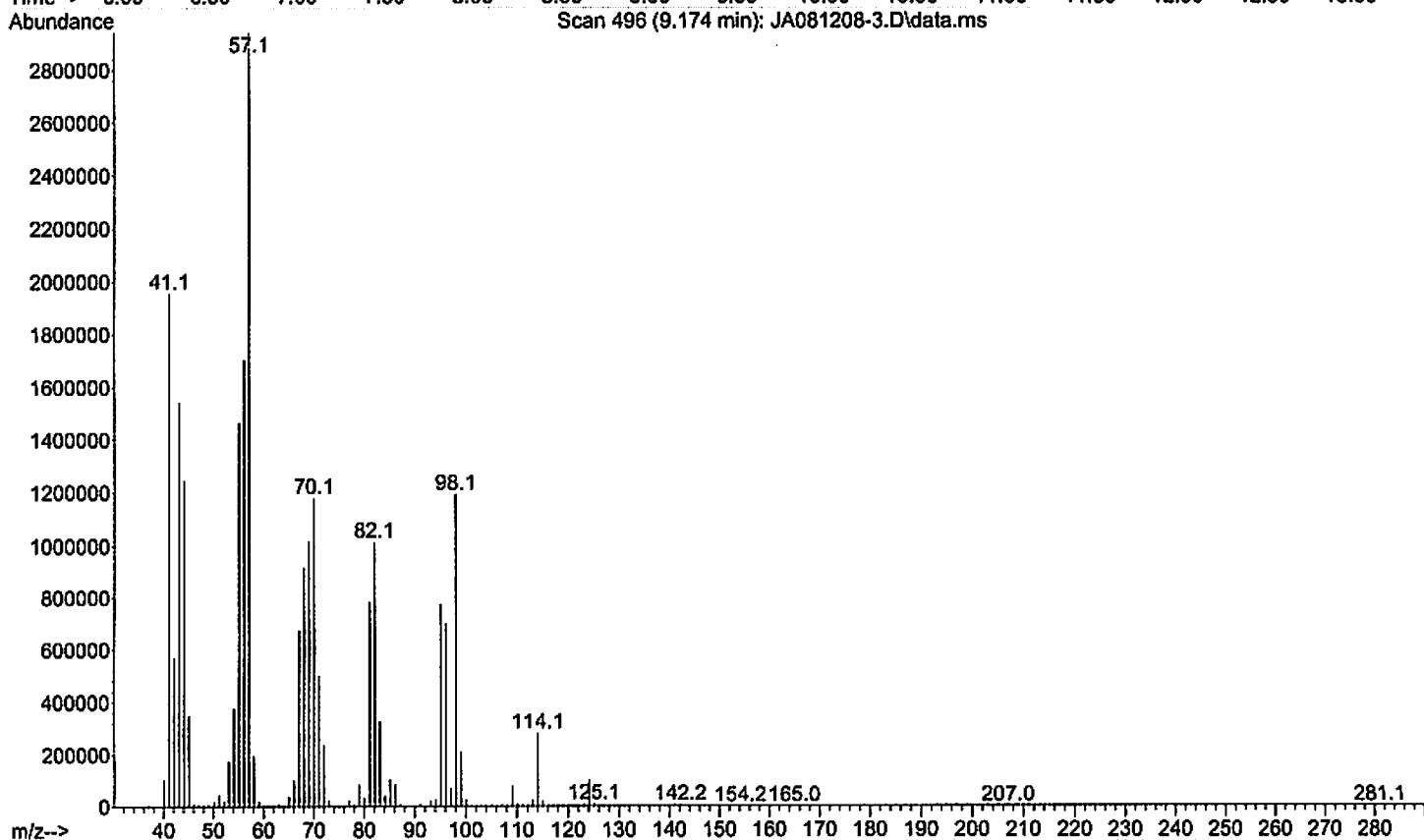
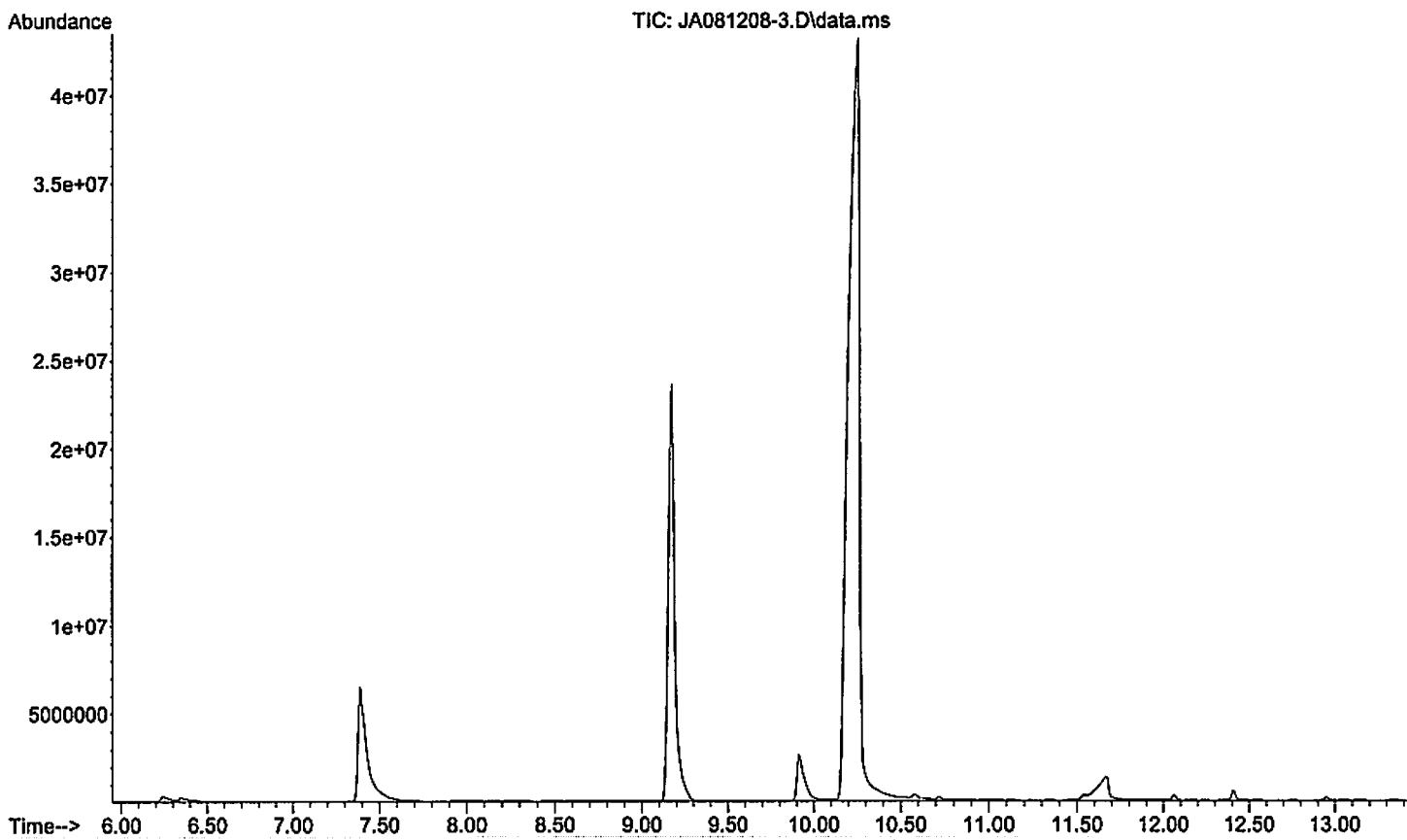
File :D:\Aldrich\JA081208-3.D
Operator :
Acquired : 12 Aug 2008 16:43 using AcqMethod JA-50-280LESS.M
Instrument : Buba
Sample Name: 5 lab-reared *C. oculata* males w/ catnip; abd.
Misc Info : GC run JA0812_4.D; /CH2C12
Vial Number: 1



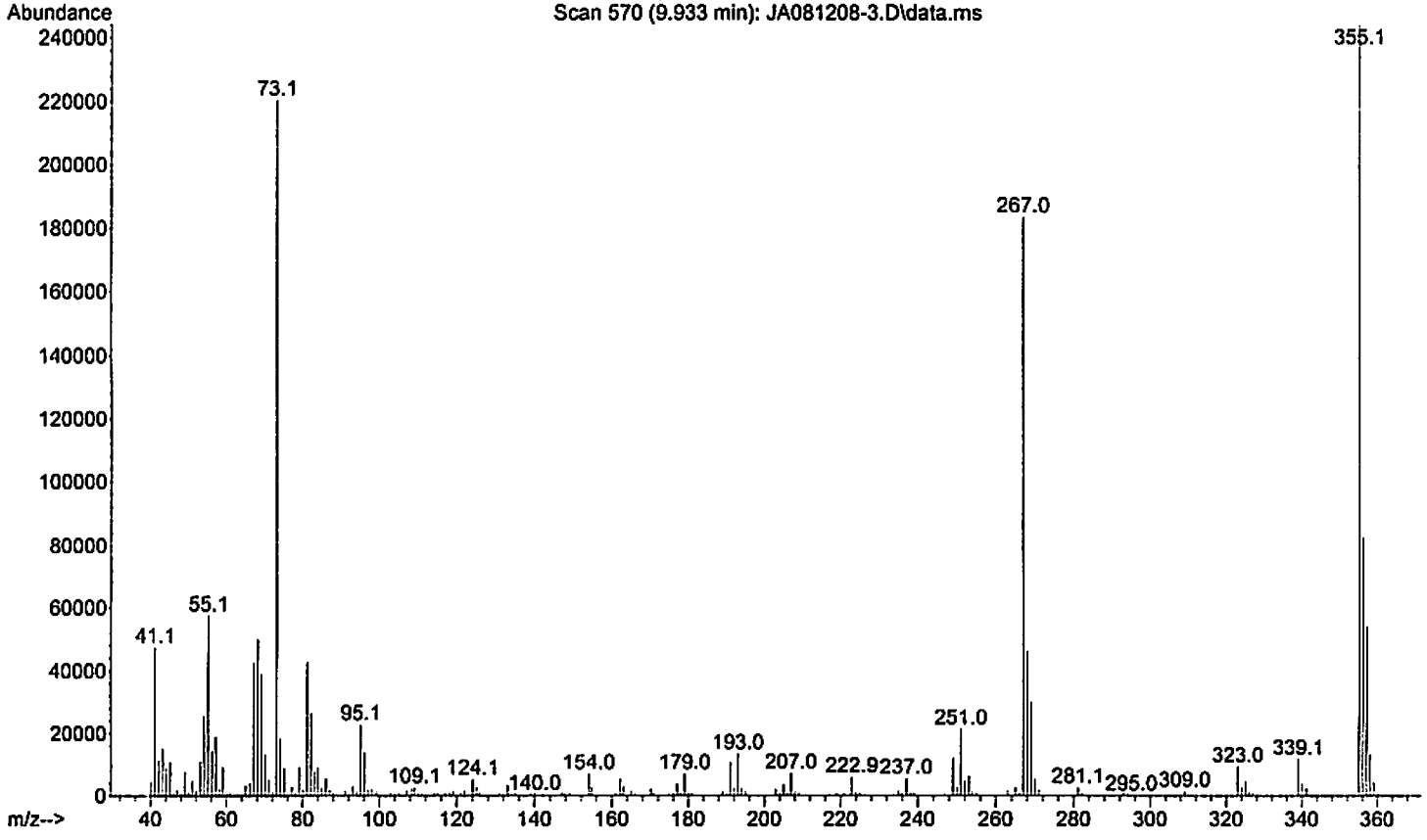
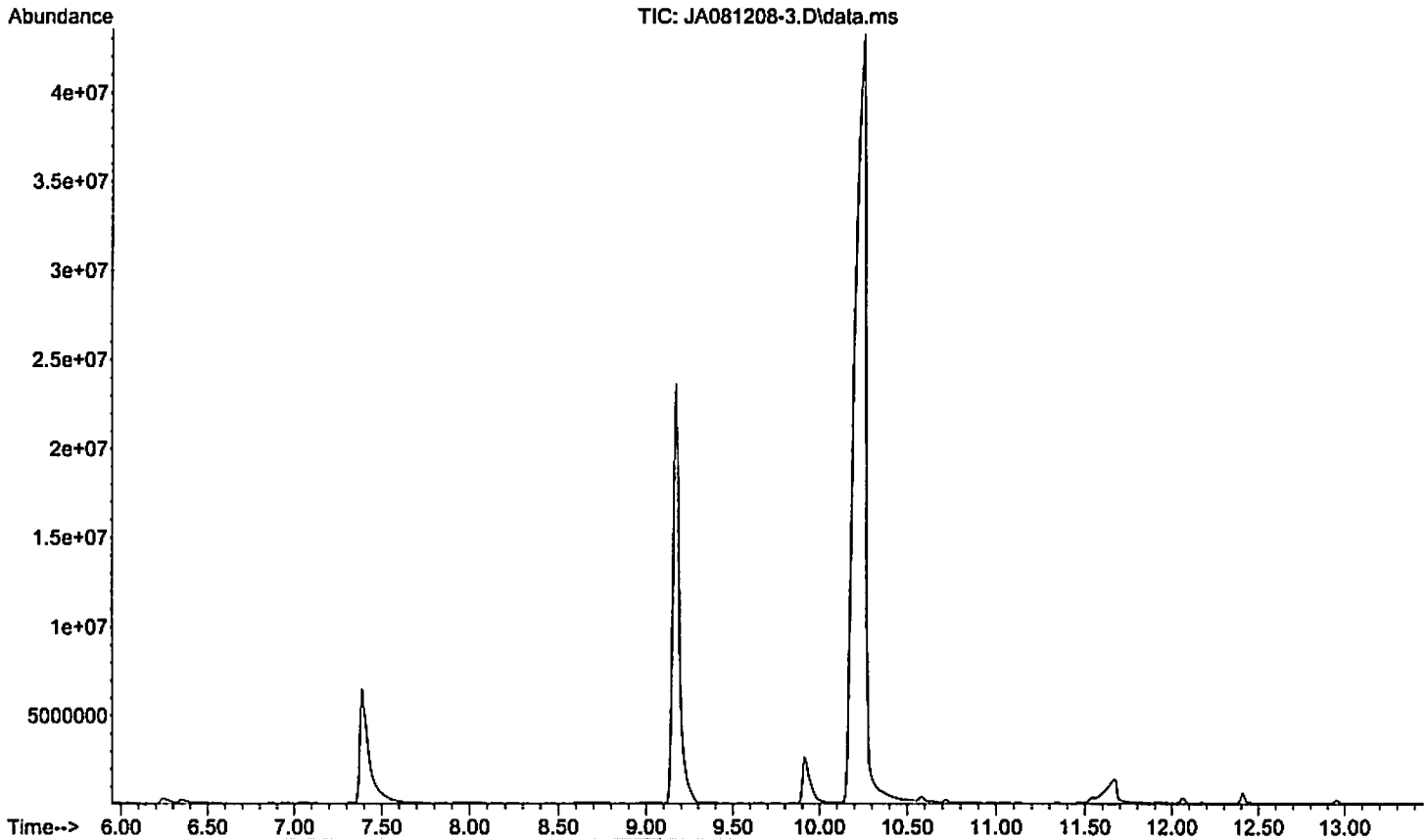
File :D:\Aldrich\JA081208-3.D
Operator :
Acquired : 12 Aug 2008 16:43 using AcqMethod JA-50-280LESS.M
Instrument : Buba
Sample Name: 5 lab-reared C.oculata males w/ catnip; abd.
Misc Info : GC run JA0812_4.D; /CH2Cl2
Vial Number: 1



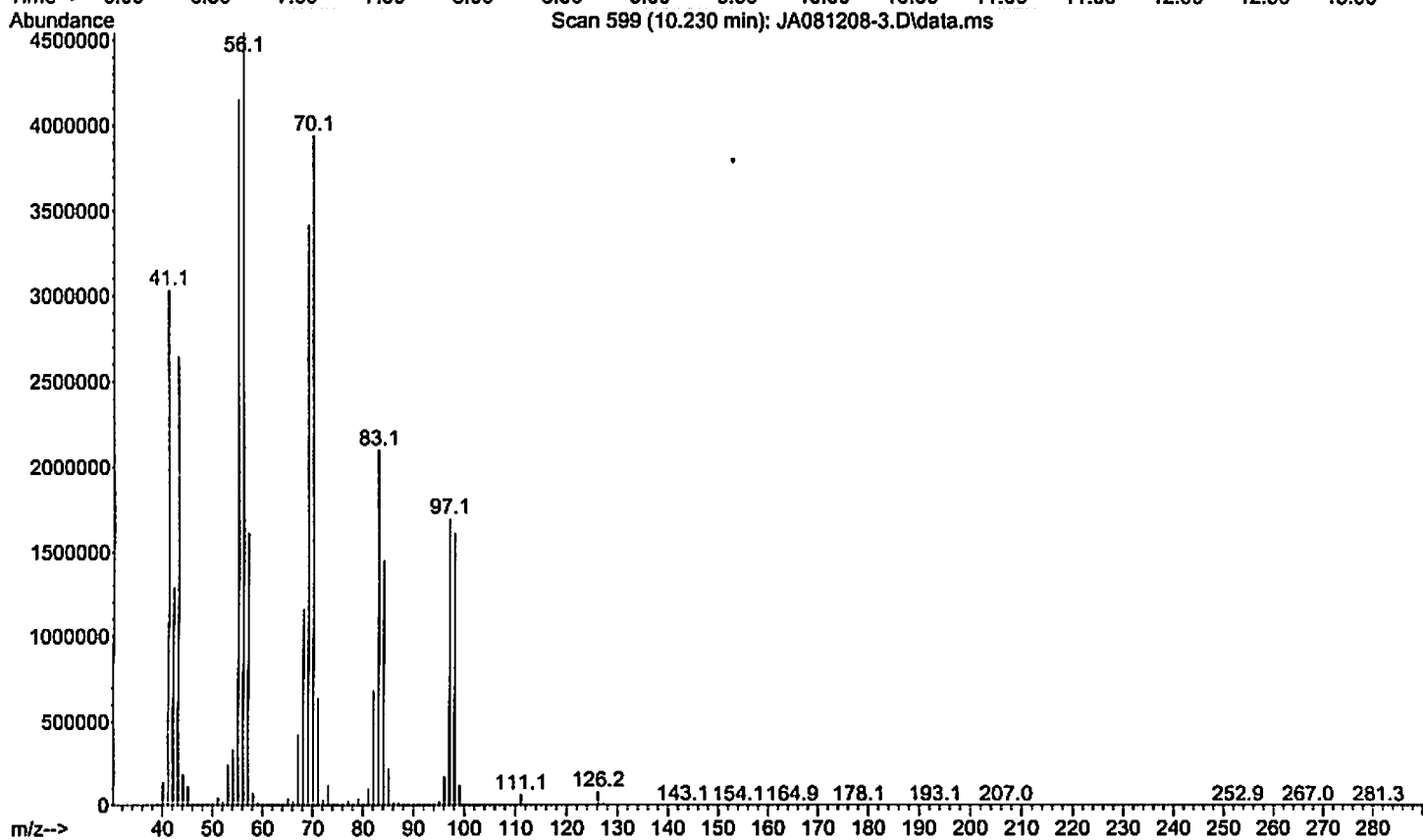
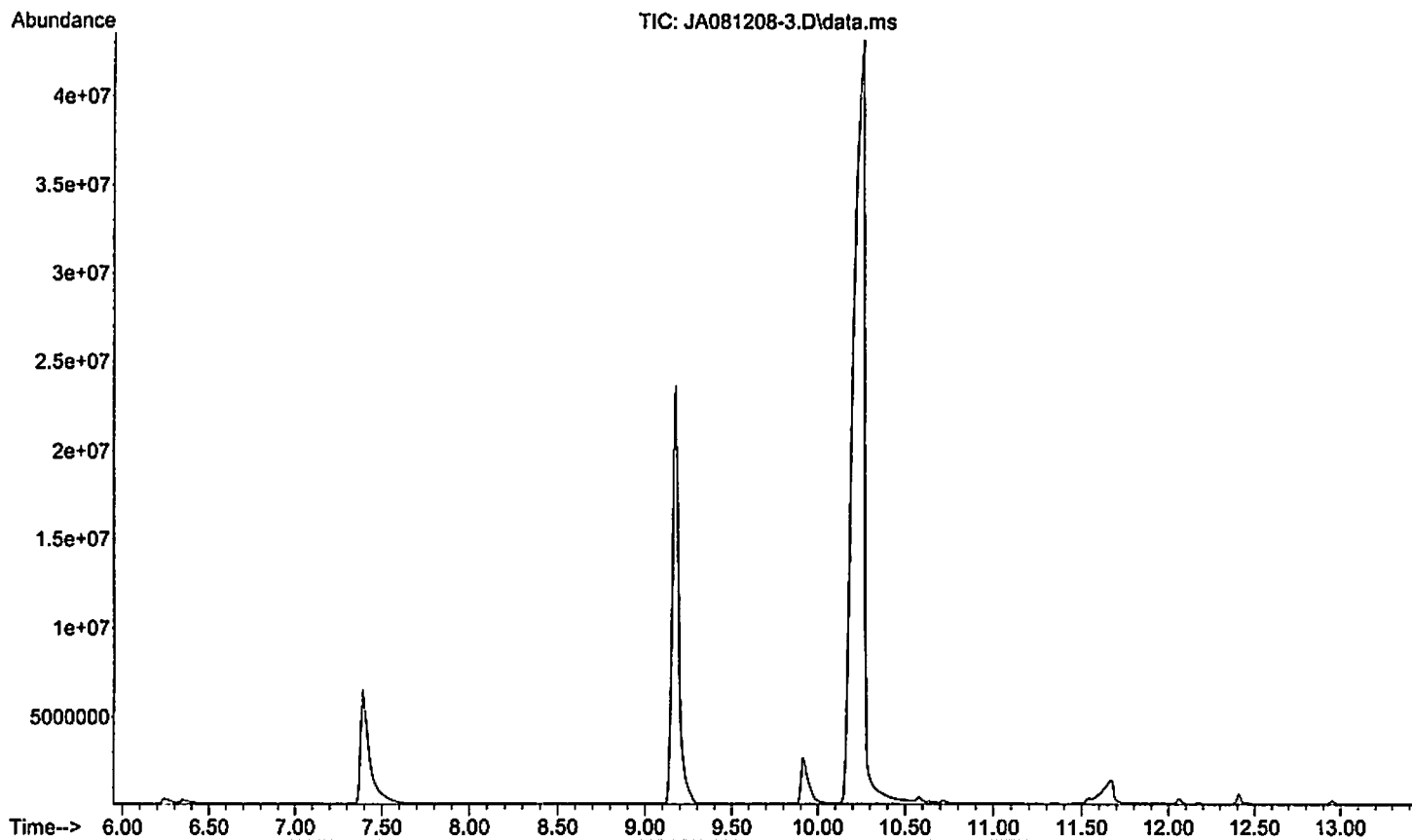
File :D:\Aldrich\JA081208-3.D
Operator :
Acquired : 12 Aug 2008 16:43 using AcqMethod JA-50-280LESS.M
Instrument : Buba
Sample Name: 5 lab-reared C.oculata males w/ catnip; abd.
Misc Info : GC run JA0812_4.D; /CH2C12
Vial Number: 1



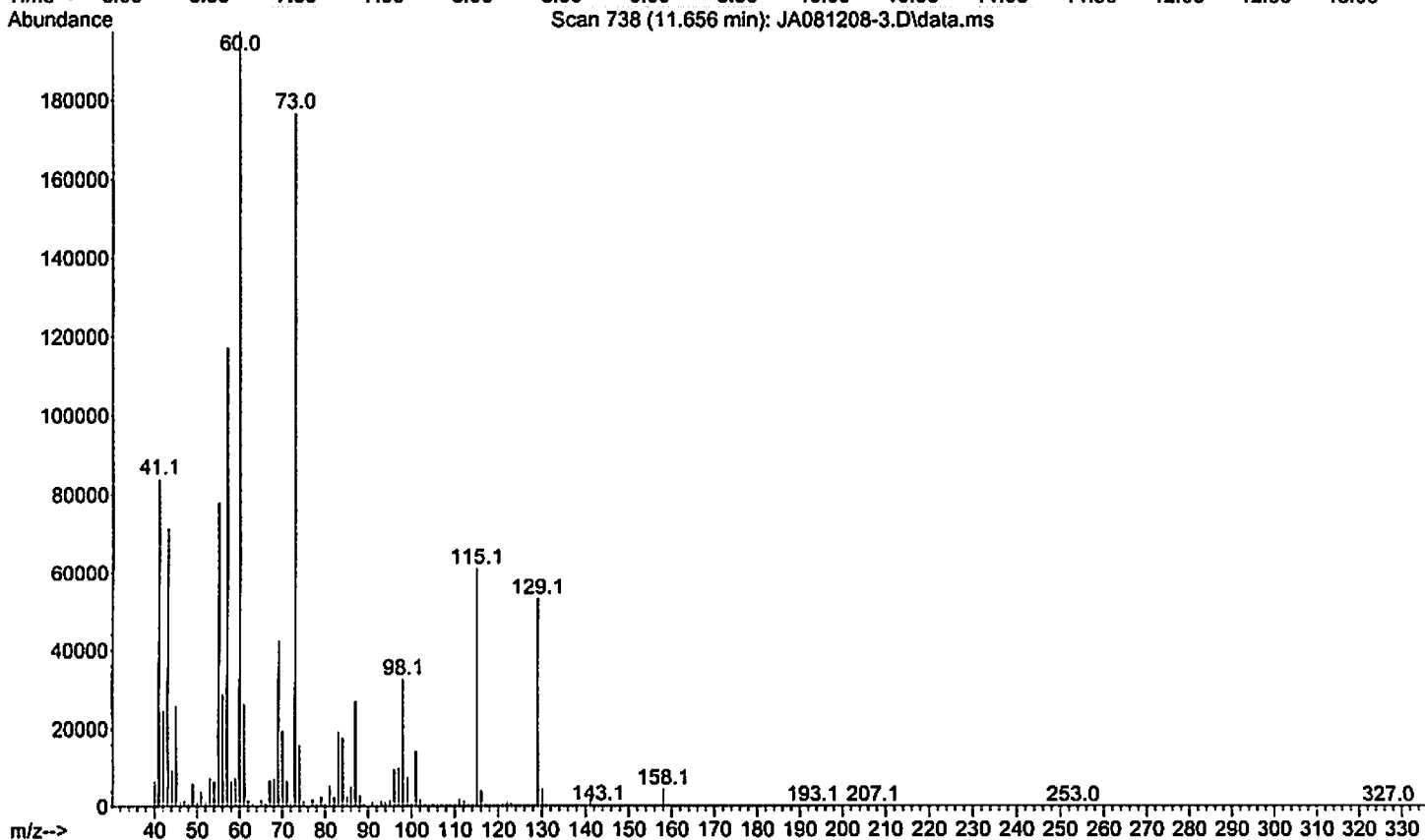
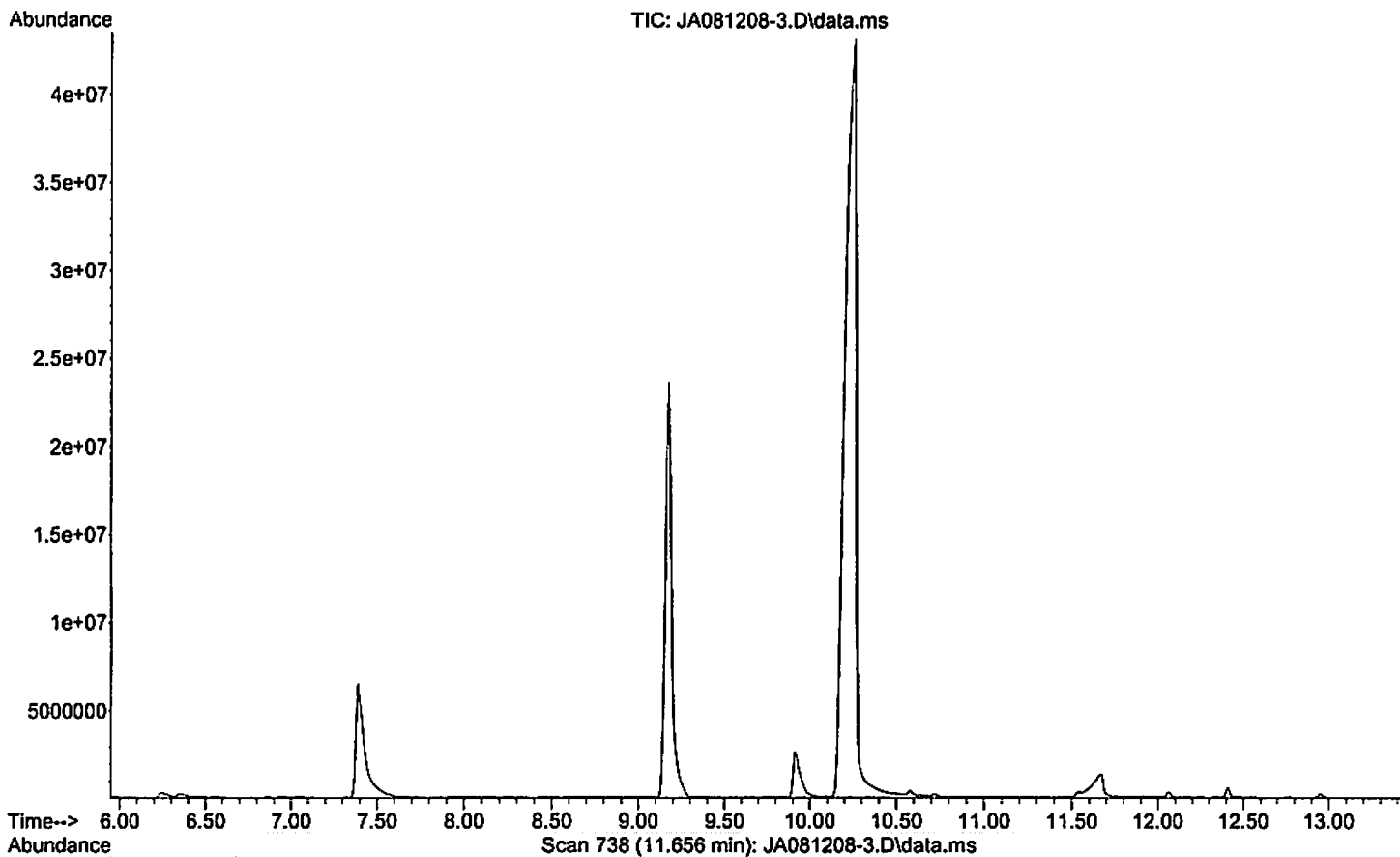
File :D:\Aldrich\JA081208-3.D
Operator :
Acquired : 12 Aug 2008 16:43 using AcqMethod JA-50-280LESS.M
Instrument : Buba
Sample Name: 5 lab-reared C.oculata males w/ catnip; abd.
Misc Info : GC run JA0812_4.D; /CH2Cl2
Vial Number: 1



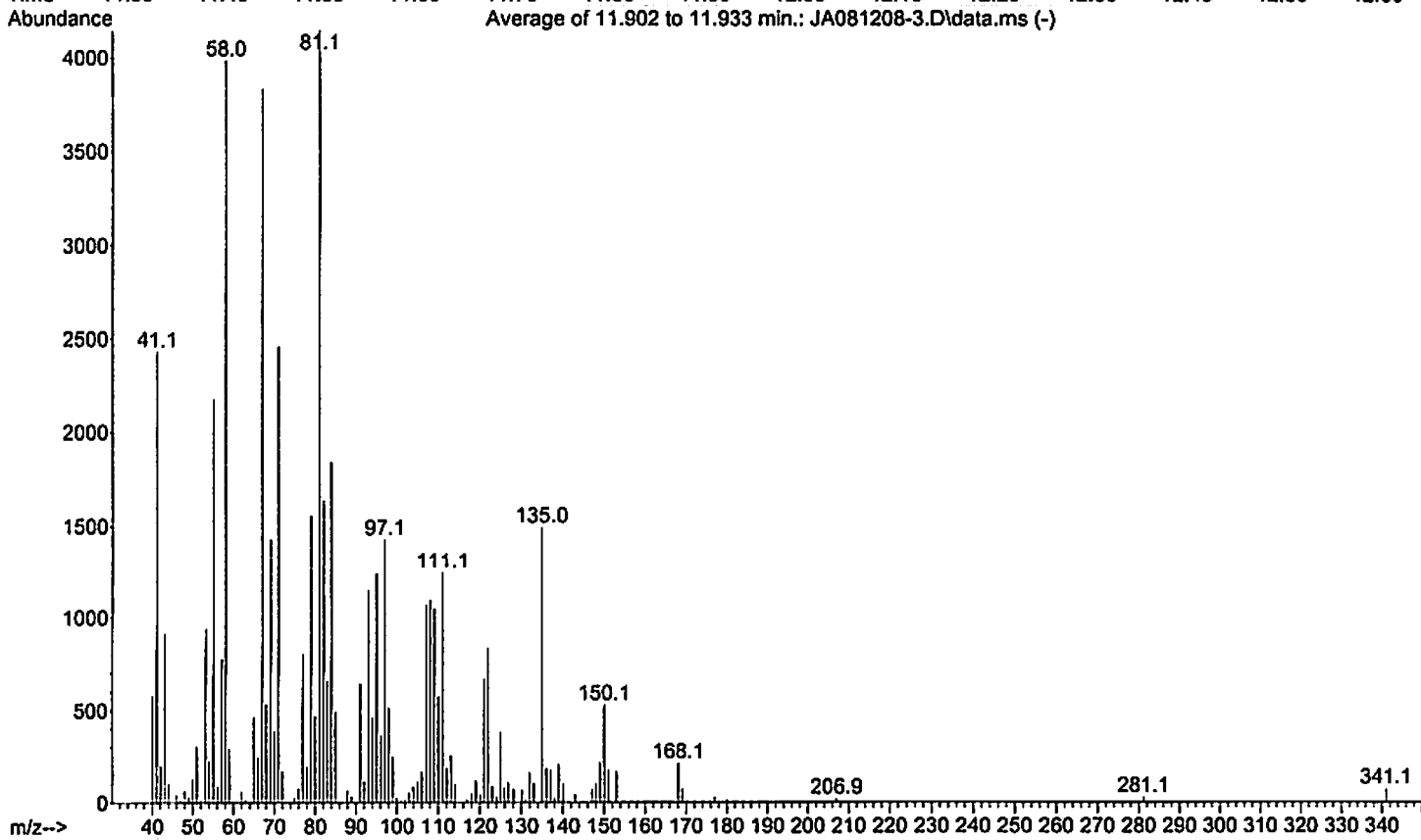
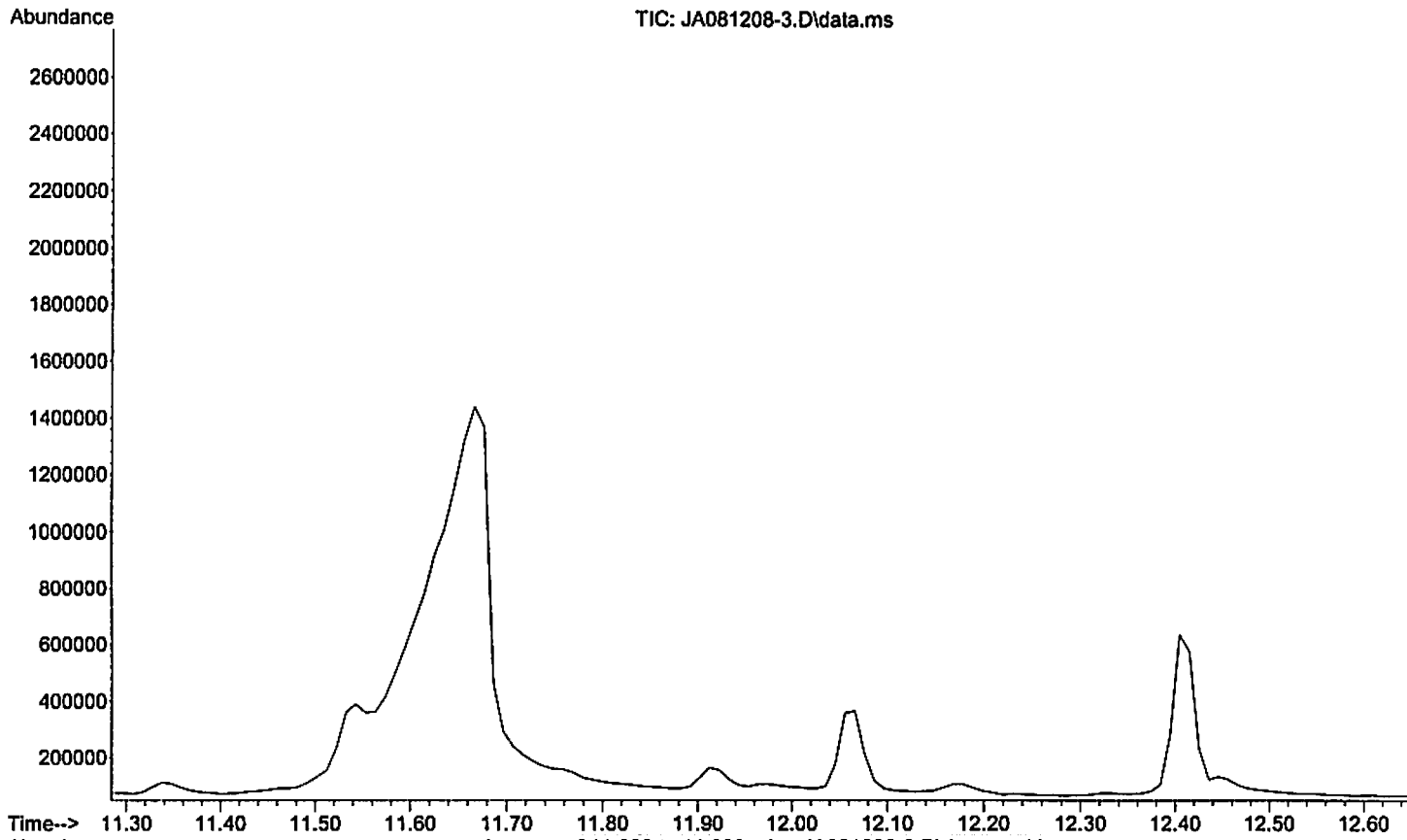
File :D:\Aldrich\JA081208-3.D
Operator :
Acquired : 12 Aug 2008 16:43 using AcqMethod JA-50-280LESS.M
Instrument : Buba
Sample Name: 5 lab-reared C.oculata males w/ catnip; abd.
Misc Info : GC run JA0812_4.D; /CH2Cl2
Vial Number: 1



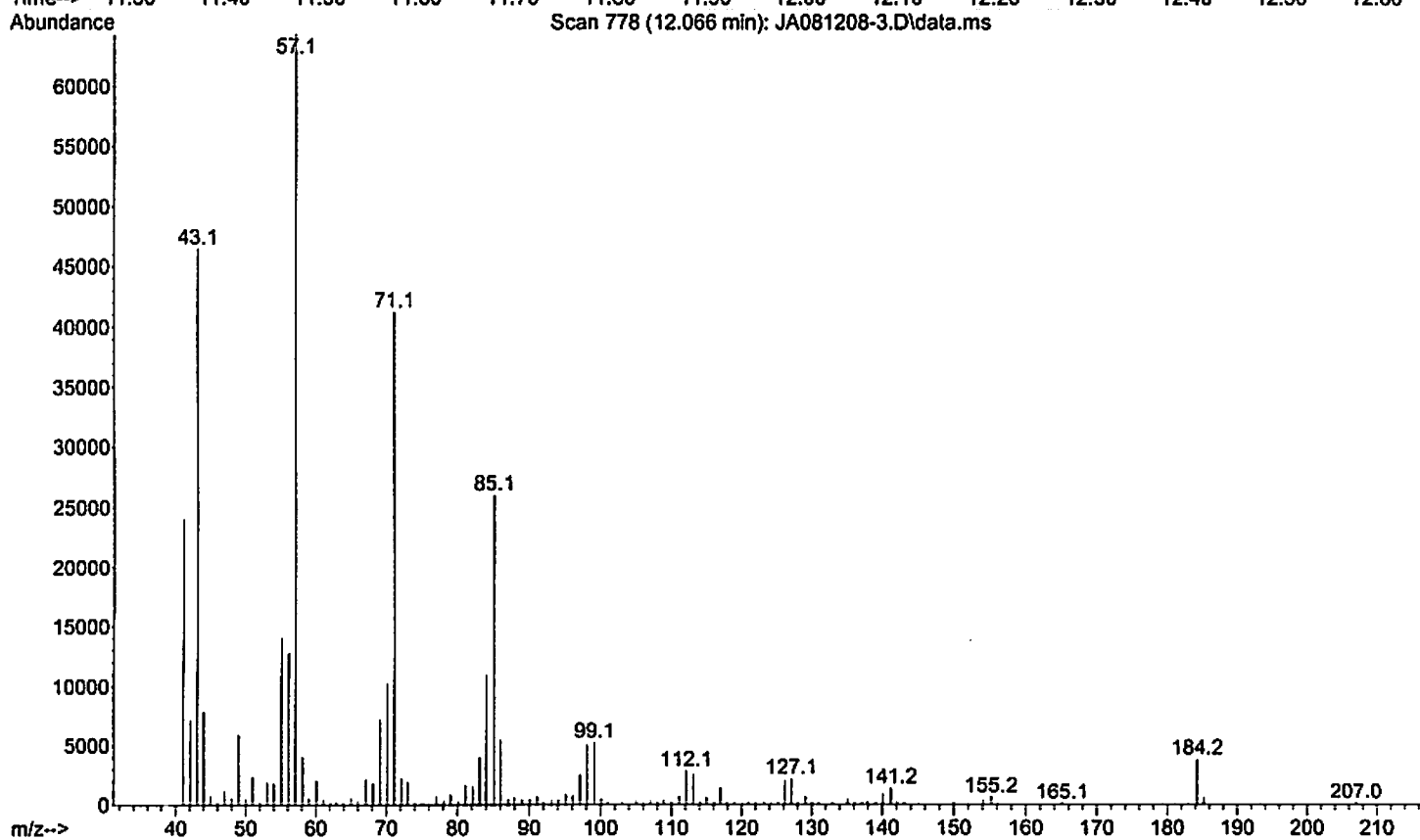
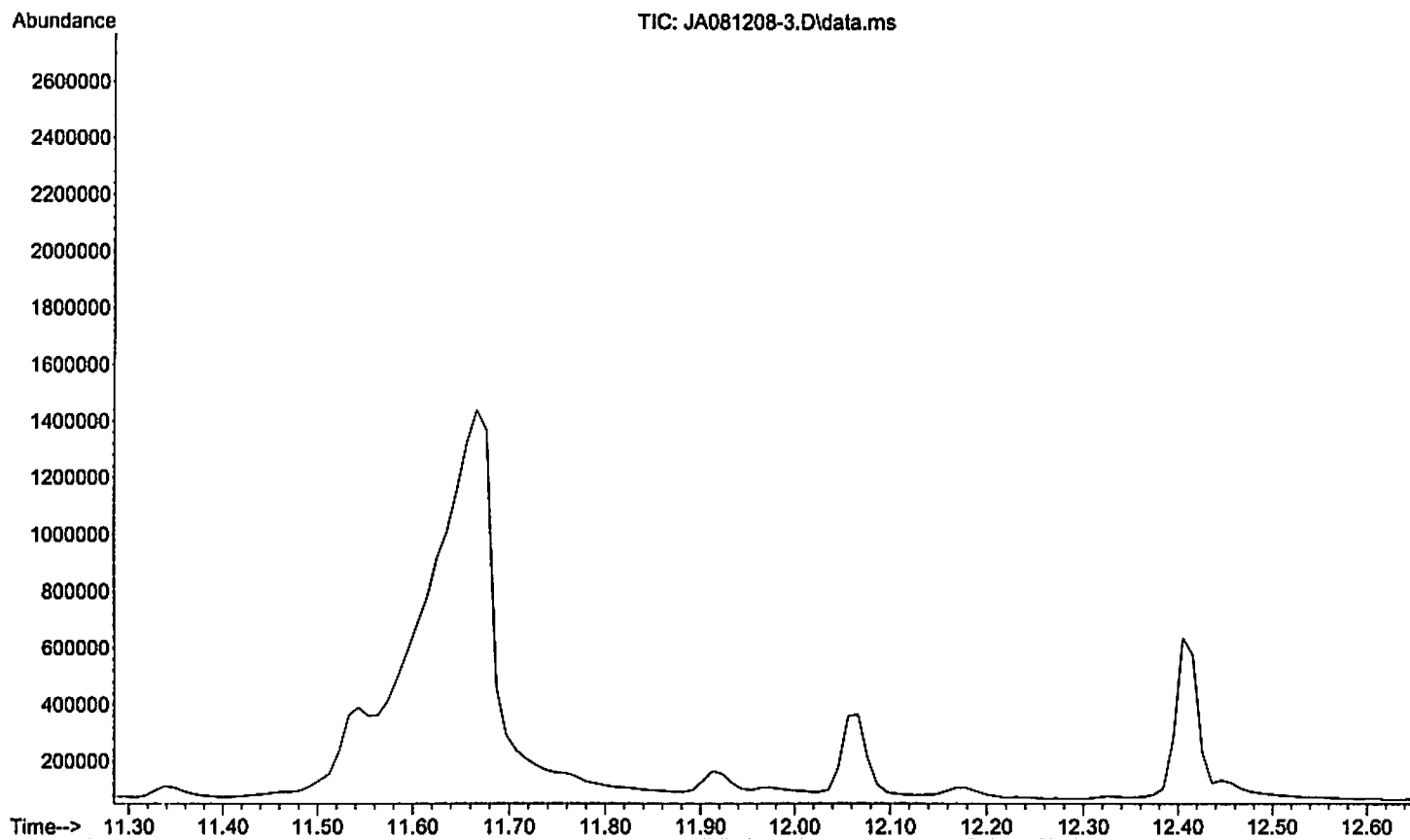
File :D:\Aldrich\JA081208-3.D
Operator :
Acquired : 12 Aug 2008 16:43 using AcqMethod JA-50-280LESS.M
Instrument : Buba
Sample Name: 5 lab-reared C.oculata males w/ catnip; abd.
Misc Info : GC run JA0812_4.D; /CH2Cl2
Vial Number: 1



File :D:\Aldrich\JA081208-3.D
Operator :
Acquired : 12 Aug 2008 16:43 using AcqMethod JA-50-280LESS.M
Instrument : Buba
Sample Name: 5 lab-reared C.oculata males w/ catnip; abd.
Misc Info : GC run JA0812_4.D; /CH2C12
Vial Number: 1



File :D:\Aldrich\JA081208-3.D
Operator :
Acquired : 12 Aug 2008 16:43 using AcqMethod JA-50-280LESS.M
Instrument : Buba
Sample Name: 5 lab-reared *C. oculata* males w/ catnip; abd.
Misc Info : GC run JA0812_4.D; /CH2C12
Vial Number: 1



File :D:\Aldrich\JA081208-3.D
Operator :
Acquired : 12 Aug 2008 16:43 using AcqMethod JA-50-280LESS.M
Instrument : Buba
Sample Name: 5 lab-reared C.oculata males w/ catnip; abd.
Misc Info : GC run JA0812_4.D; /CH2Cl2
Vial Number: 1

