

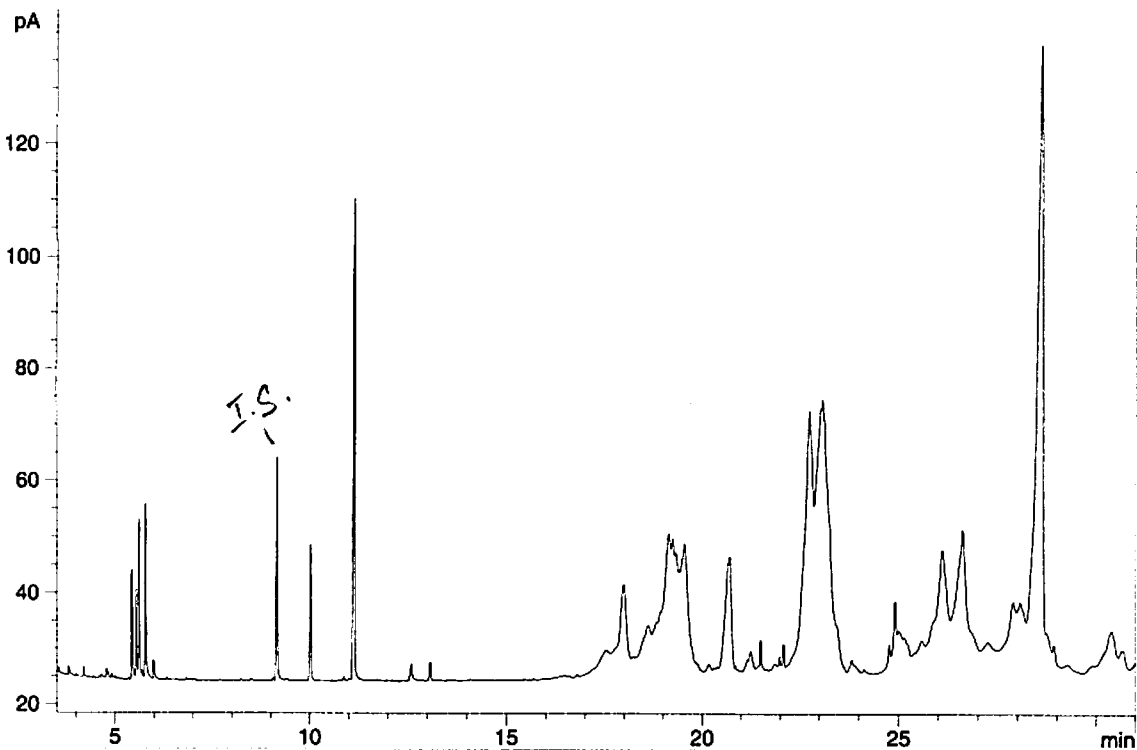
Male #4 Chrysopa oculata abdominal cuticle + 1ul of Z-3  
-octen-1-ol (50ng/ul) (/50ul conc. to 3ul CH2Cl2), DB-5.

Note: Caught 5/22 sweep netting; actually, all samples  
run today I injected the entire extract of ~3ul.

```

=====
Injection Date : 5/23/2008 12:36:09 PM
Sample Name    : M4 C.ocu. abd+IS
Acq. Operator  : Aldrich
Vial           : -
Inj            : 1
Inj Volume     : Manually

Method         : C:\HPCHEM\1\METHODS\DBLESS1.M
Last changed   : 2/29/2008 10:02:00 AM by Aldrich
2/29/07; editing new method for desired output
FID1 A, (C-OCUJA-05233.D)
    
```



Area Percent Report

```

Sorted By      : Signal
Multiplier     : 1.0000
Dilution       : 1.0000
    
```

Signal 1: FID1 A,

| Peak # | RetTime [min] | Type | Width [min] | Area [pA*s] | Height [pA] | Area %  |
|--------|---------------|------|-------------|-------------|-------------|---------|
| 1      | 4.190         | PB   | 0.0209      | 2.43881     | 1.79256     | 0.06000 |
| 2      | 4.773         | PB   | 0.0316      | 3.33710     | 1.58547     | 0.08210 |
| 3      | 5.426         | PB   | 0.0248      | 31.64631    | 19.60218    | 0.77856 |
| 4      | 5.534         | BV   | 0.0244      | 24.31507    | 15.44477    | 0.59820 |
| 5      | 5.607         | VB   | 0.0241      | 42.85784    | 27.56833    | 1.05438 |
| 6      | 5.772         | PB   | 0.0235      | 48.48442    | 30.59177    | 1.19281 |
| 7      | 5.984         | PB   | 0.0371      | 7.55877     | 3.25789     | 0.18596 |
| 8      | 9.153         | BB   | 0.0345      | 86.14058    | 39.41009    | 2.11922 |
| 9      | 10.020        | BB   | 0.0333      | 54.28423    | 24.08843    | 1.33550 |
| 10     | 11.128        | BB   | 0.0356      | 207.42331   | 84.74079    | 5.10301 |
| 11     | 12.590        | BB   | 0.0424      | 8.35635     | 2.83435     | 0.20558 |
| 12     | 13.068        | BB   | 0.0342      | 7.36902     | 3.27691     | 0.18129 |
| 13     | 17.989        | BB   | 0.1092      | 108.64110   | 12.28714    | 2.67278 |
| 14     | 19.134        | BV   | 0.0919      | 83.22655    | 11.17811    | 2.04753 |
| 15     | 19.241        | VP   | 0.0942      | 63.74343    | 8.62394     | 1.56821 |

| Peak # | RetTime [min] | Type | Width [min] | Area [pA*s] | Height [pA] | Area %   |
|--------|---------------|------|-------------|-------------|-------------|----------|
| 16     | 19.545        | BP   | 0.0827      | 50.87923    | 8.39119     | 1.25173  |
| 17     | 20.704        | BB   | 0.1306      | 220.83432   | 20.35255    | 5.43294  |
| 18     | 21.497        | BB   | 0.0334      | 10.86104    | 4.97960     | 0.26720  |
| 19     | 21.989        | BB   | 0.0322      | 3.62505     | 1.74567     | 0.08918  |
| 20     | 22.084        | BP   | 0.0337      | 8.52734     | 4.02046     | 0.20979  |
| 21     | 22.737        | BV   | 0.1664      | 579.81201   | 43.52345    | 14.26448 |
| 22     | 23.067        | VB   | 0.2636      | 1013.38995  | 46.07997    | 24.93132 |
| 23     | 24.759        | PV   | 0.0438      | 7.97411     | 2.83406     | 0.19618  |
| 24     | 24.906        | VB   | 0.0630      | 37.94100    | 8.35325     | 0.93342  |
| 25     | 26.092        | BP   | 0.1254      | 124.45312   | 12.46958    | 3.06178  |
| 26     | 26.599        | BB   | 0.1354      | 170.18707   | 16.35074    | 4.18693  |
| 27     | 28.581        | BP   | 0.1366      | 1056.41882  | 105.72103   | 25.98992 |

Totals : 4064.72596 561.10429

Results obtained with enhanced integrator!

=====  
\*\*\* End of Report \*\*\*

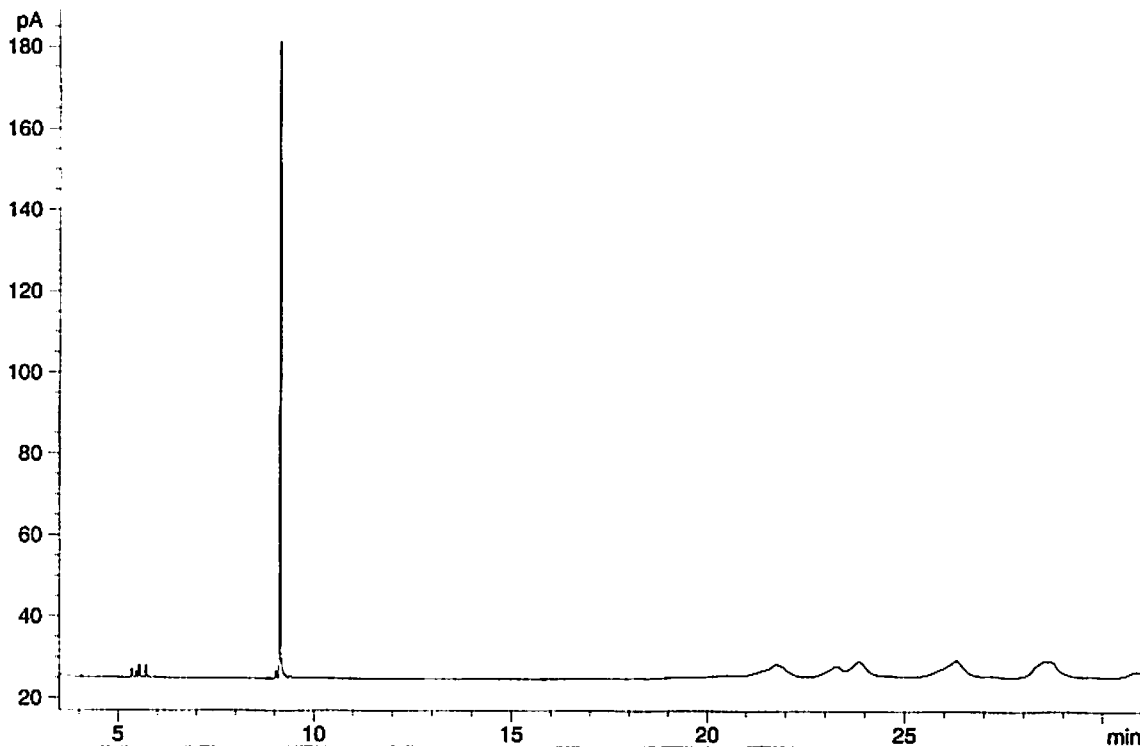


inj. 1.0 ul Z-3-octen-1-ol (Bedoukian) (50ng/ul CH2Cl2)  
 , DB-5. Note: Dilute soln. for internal standard in Chr  
 ysopa abdominal cuticle extracts.

```

=====
Injection Date   : 5/19/2008 2:20:58 PM
Sample Name      : Z-3-octen-1-ol           Vial : -
Acq. Operator    : Aldrich                 Inj  : 1
                                           Inj Volume : Manually

Method           : C:\HPCHEM\1\METHODS\DBLESS1.M
Last changed     : 2/29/2008 10:02:00 AM by Aldrich
2/29/07; editing new method for desired output
FID1 A, (C-OCUJA-05194.D)
  
```



```

=====
                          Area Percent Report
=====
  
```

```

Sorted By      :      Signal
Multiplier     :      1.0000
Dilution       :      1.0000
  
```

Signal 1: FID1 A,

| Peak # | RetTime [min] | Type | Width [min] | Area [pA*s] | Height [pA] | Area %   |
|--------|---------------|------|-------------|-------------|-------------|----------|
| 1      | 5.355         | PB   | 0.0233      | 3.67373     | 2.33758     | 1.27797  |
| 2      | 5.470         | PB   | 0.0243      | 2.86948     | 1.82610     | 0.99820  |
| 3      | 5.541         | BB   | 0.0244      | 4.85035     | 3.08039     | 1.68727  |
| 4      | 5.715         | PB   | 0.0247      | 4.99391     | 3.11310     | 1.73721  |
| 5      | 9.045         | PP   | 0.0260      | 2.96520     | 1.81831     | 1.03150  |
| 6      | 9.146         | BB   | 0.0271      | 268.11383   | 155.64771   | 93.26785 |

Totals :                                    287.46650   167.82319

Results obtained with enhanced integrator!

```

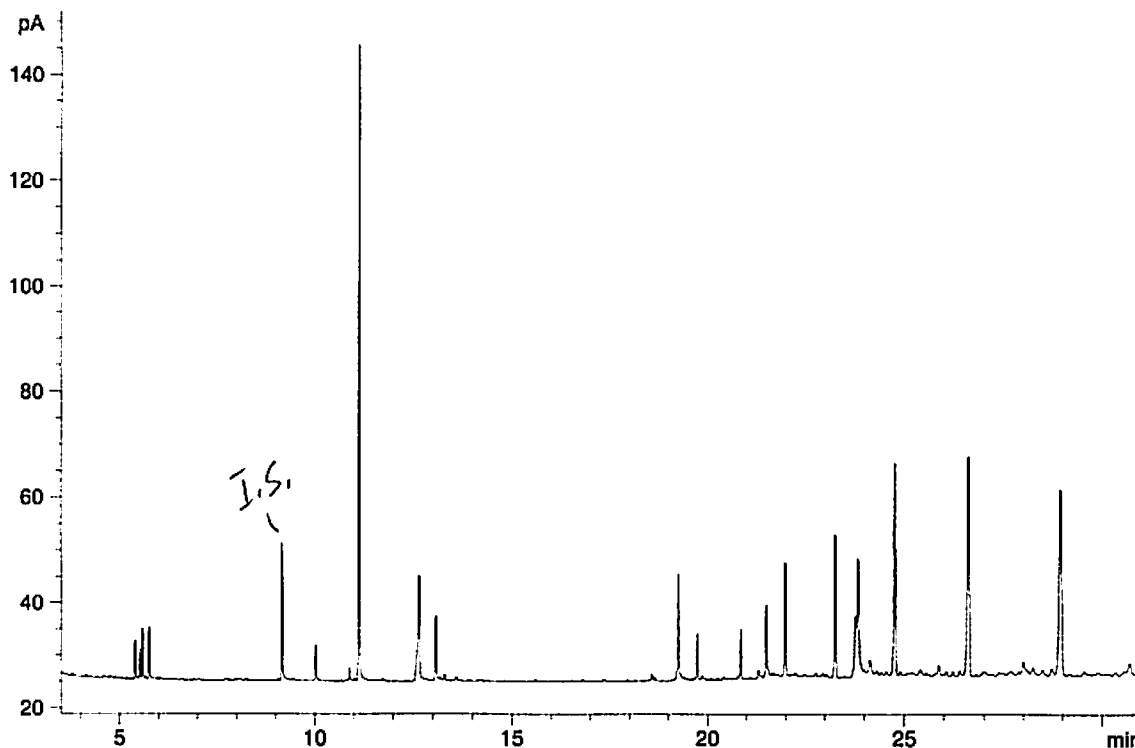
=====
*** End of Report ***
  
```

inj. abdominal cuticle extract + 2-3-octene-1-ol as internal standard (1ul of 50 ng/ul CH2Cl2) of 1 male Chrysopa oculata caught this morning (5/19) sweep netting at North Farm and sampled by SPME (GC run JA-05195.D) at 3:30pm (/20ul), DB-5.

```

=====
Injection Date   : 5/19/2008 3:44:31 PM
Sample Name     : M C.ocu abd.
Acq. Operator   : Aldrich
Vial            : -
Inj            : 1
Inj Volume     : Manually

Method          : C:\HPCHEM\1\METHODS\DBLESS1.M
Last changed   : 2/29/2008 10:02:00 AM by Aldrich
2/29/07; editing new method for desired output
FID1 A, (C-OCUJA-05196.D)
    
```



Area Percent Report

```

Sorted By      : Signal
Multiplier    : 1.0000
Dilution      : 1.0000
    
```

Signal 1: FID1 A,

| Peak # | RetTime [min] | Type | Width [min] | Area [pA*s] | Height [pA] | Area %   |
|--------|---------------|------|-------------|-------------|-------------|----------|
| 1      | 5.403         | PB   | 0.0231      | 10.88953    | 7.43829     | 0.92855  |
| 2      | 5.514         | PB   | 0.0237      | 8.57382     | 5.66322     | 0.73109  |
| 3      | 5.586         | BB   | 0.0232      | 14.21646    | 9.63817     | 1.21224  |
| 4      | 5.756         | PB   | 0.0234      | 14.74641    | 9.90678     | 1.25743  |
| 5      | 9.158         | PB   | 0.0275      | 45.38021    | 25.77915    | 3.86959  |
| 6      | 10.026        | PB   | 0.0279      | 12.18851    | 6.81218     | 1.03932  |
| 7      | 10.882        | PB   | 0.0288      | 4.65137     | 2.49382     | 0.39662  |
| 8      | 11.135        | BB   | 0.0276      | 211.38060   | 119.47237   | 18.02450 |
| 9      | 12.651        | BB   | 0.0485      | 72.68665    | 19.94898    | 6.19802  |
| 10     | 13.070        | BB   | 0.0312      | 24.14357    | 12.14698    | 2.05873  |
| 11     | 18.566        | PP   | 0.0268      | 1.91516     | 1.18775     | 0.16331  |
| 12     | 19.247        | BB   | 0.0343      | 44.42618    | 19.67569    | 3.78824  |
| 13     | 19.738        | BP   | 0.0288      | 16.21338    | 8.69434     | 1.38252  |
| 14     | 20.853        | BB   | 0.0302      | 17.77602    | 9.36144     | 1.51577  |

*I.S.* - 5  
 - nonanal  
 - nonanal  
 - undecanal

| Peak # | RetTime [min] | Type | Width [min] | Area [pA*s] | Height [pA] | Area %   |
|--------|---------------|------|-------------|-------------|-------------|----------|
| 15     | 21.502        | PB   | 0.0330      | 29.81712    | 13.35783    | 2.54252  |
| 16     | 21.987        | BP   | 0.0342      | 46.51374    | 21.56734    | 3.96624  |
| 17     | 23.257        | BP   | 0.0389      | 67.46822    | 27.19983    | 5.75304  |
| 18     | 23.768        | BV   | 0.0463      | 33.63115    | 10.81431    | 2.86774  |
| 19     | 23.831        | VB   | 0.0441      | 66.69970    | 21.53813    | 5.68751  |
| 20     | 24.135        | PP   | 0.0585      | 9.64375     | 2.36792     | 0.82233  |
| 21     | 24.758        | BP   | 0.0454      | 115.41588   | 40.27539    | 9.84155  |
| 22     | 26.600        | BP   | 0.0540      | 145.66301   | 41.42872    | 12.42074 |
| 23     | 28.927        | BP   | 0.0708      | 158.70012   | 35.07139    | 13.53242 |

Totals : 1172.74055 471.84003

Results obtained with enhanced integrator!

=====  
\*\*\* End of Report \*\*\*

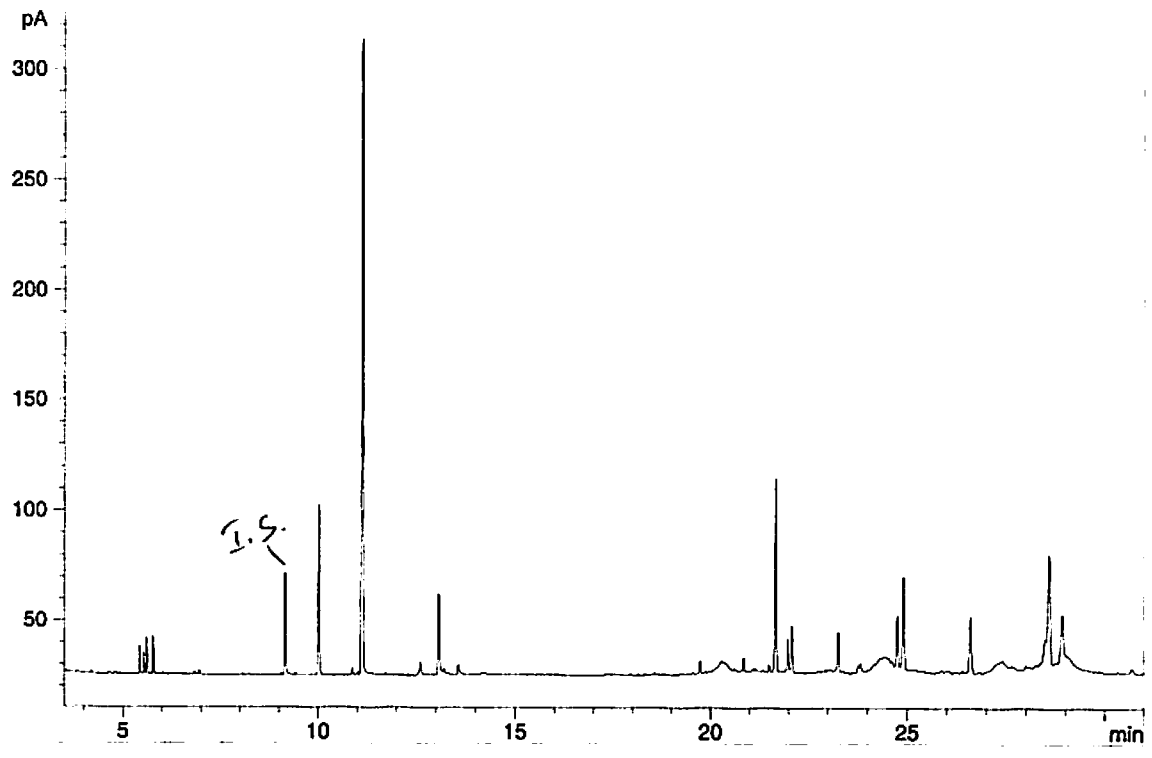
inj. 1ul of male Chrysopa oculata abdominal cuticle + 1  
ul of 2-3-octen-1-ol (50ng/ul) (/20ul conc. to 10ul CH2C  
12), DB-5. Note: Caught 5/21 sweep netting.

```

=====
Injection Date : 5/22/2008 11:35:37 AM
Sample Name    : M C.ocu. abd+IS
Acq. Operator  : Aldrich
Vial           : -
Inj           : 1
Inj Volume    : Manually

Method        : C:\HPCHEM\1\METHODS\DBLESS1.M
Last changed  : 2/29/2008 10:02:00 AM by Aldrich
2/29/07; editing new method for desired output
FID1 A, (C-OCUJA-05222.D)

```



```

=====
Area Percent Report
=====

```

```

Sorted By      : Signal
Multiplier    : 1.0000
Dilution      : 1.0000

```

Signal 1: FID1 A,

| Peak # | RetTime [min] | Type | Width [min] | Area [pA*s] | Height [pA] | Area %   |
|--------|---------------|------|-------------|-------------|-------------|----------|
| 1      | 4.192         | PB   | 0.0197      | 1.34418     | 1.06841     | 0.06011  |
| 2      | 5.429         | PB   | 0.0214      | 18.27618    | 13.03830    | 0.81730  |
| 3      | 5.538         | PB   | 0.0229      | 14.54416    | 10.06528    | 0.65041  |
| 4      | 5.609         | BB   | 0.0231      | 24.20767    | 16.49281    | 1.08255  |
| 5      | 5.776         | PB   | 0.0220      | 24.99474    | 17.17603    | 1.11775  |
| 6      | 9.158         | BB   | 0.0321      | 95.33658    | 46.13399    | 4.26340  |
| 7      | 10.025        | BB   | 0.0341      | 172.41638   | 77.20683    | 7.71036  |
| 8      | 10.877        | BP   | 0.0312      | 6.59841     | 3.18703     | 0.29508  |
| 9      | 11.143        | BB   | 0.0394      | 766.72314   | 285.32941   | 34.28742 |
| 10     | 12.603        | BB   | 0.0437      | 17.52394    | 5.88805     | 0.78366  |
| 11     | 13.069        | BB   | 0.0345      | 81.67187    | 35.97081    | 3.65232  |
| 12     | 13.558        | PB   | 0.0408      | 11.85255    | 4.35411     | 0.53004  |
| 13     | 19.737        | BP   | 0.0268      | 10.09000    | 5.66960     | 0.45122  |
| 14     | 20.852        | BB   | 0.0289      | 11.23600    | 5.99714     | 0.50247  |
| 15     | 21.497        | PB   | 0.0322      | 6.78371     | 3.27358     | 0.30336  |
| 16     | 21.679        | BB   | 0.0343      | 204.56680   | 87.54313    | 9.14811  |

| Peak # | RetTime [min] | Type | Width [min] | Area [pA*s] | Height [pA] | Area %   |
|--------|---------------|------|-------------|-------------|-------------|----------|
| 17     | 21.984        | BV   | 0.0332      | 32.14594    | 14.87027    | 1.43755  |
| 18     | 22.081        | VP   | 0.0333      | 45.38967    | 20.93574    | 2.02980  |
| 19     | 23.255        | BP   | 0.0375      | 43.23876    | 17.71983    | 1.93361  |
| 20     | 23.814        | PP   | 0.0766      | 22.77348    | 4.05215     | 1.01842  |
| 21     | 24.754        | PV   | 0.0414      | 63.22416    | 22.76738    | 2.82735  |
| 22     | 24.904        | VP   | 0.0447      | 120.82863   | 41.83409    | 5.40339  |
| 23     | 26.593        | BP   | 0.0560      | 88.95678    | 25.30288    | 3.97810  |
| 24     | 28.583        | BB   | 0.0758      | 255.52908   | 49.06987    | 11.42711 |
| 25     | 28.916        | BB   | 0.0691      | 95.91190    | 20.29109    | 4.28912  |

Totals : 2236.16472 835.23780

Results obtained with enhanced integrator!

=====  
 \*\*\* End of Report \*\*\*

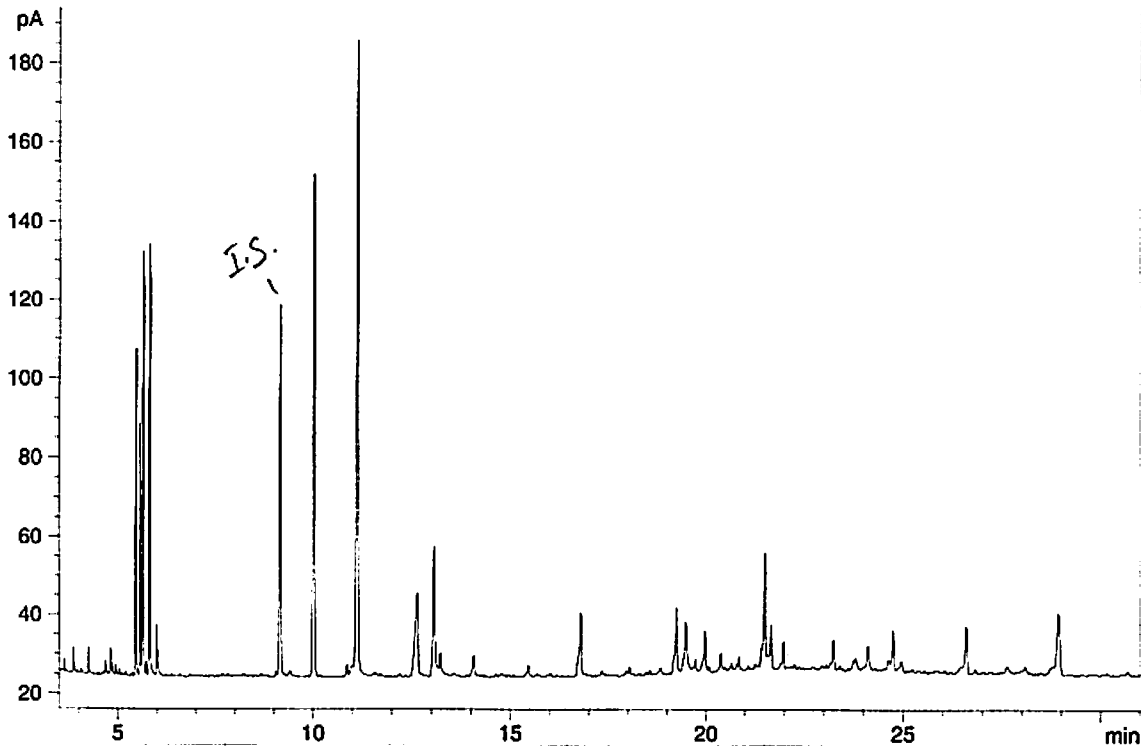


Male #1 Chrysopa oculata abdominal cuticle + 1ul of Z-3  
 -octen-1-ol (50ng/ul) (/50ul conc. to 10ul CH2Cl2), DB-5  
 . Note: Caught 5/22 sweep netting.

```

=====
Injection Date   : 5/23/2008 9:39:53 AM
Sample Name     : M1 C.ocu. abd+IS           Vial : -
Acq. Operator  : Aldrich                   Inj  : 1
                                           Inj Volume : Manually

Method          : C:\HPCHEM\1\METHODS\DBLESS1.M
Last changed   : 2/29/2008 10:02:00 AM by Aldrich
2/29/07; editing new method for desired output
FID1 A, (C-OCUJA-05230.D)
  
```



```

=====
                          Area Percent Report
=====
  
```

```

Sorted By      :      Signal
Multiplier    :      1.0000
Dilution      :      1.0000
  
```

Signal 1: FID1 A,

| Peak # | RetTime [min] | Type | Width [min] | Area [pA*s] | Height [pA] | Area %   |
|--------|---------------|------|-------------|-------------|-------------|----------|
| 1      | 3.623         | BP   | 0.0164      | 3.49991     | 3.29205     | 0.14079  |
| 2      | 3.856         | PB   | 0.0183      | 7.82840     | 6.39621     | 0.31490  |
| 3      | 4.245         | BB   | 0.0203      | 8.52106     | 6.48478     | 0.34277  |
| 4      | 4.682         | BP   | 0.0222      | 4.87462     | 3.29772     | 0.19608  |
| 5      | 4.811         | PV   | 0.0249      | 11.09469    | 6.50251     | 0.44629  |
| 6      | 4.854         | VB   | 0.0216      | 3.73134     | 2.61824     | 0.15010  |
| 7      | 4.942         | PB   | 0.0217      | 3.70444     | 2.58796     | 0.14901  |
| 8      | 5.032         | BB   | 0.0285      | 2.96809     | 1.53823     | 0.11939  |
| 9      | 5.455         | BB   | 0.0210      | 113.51548   | 82.60843    | 4.56624  |
| 10     | 5.562         | BV   | 0.0216      | 90.95159    | 63.90150    | 3.65859  |
| 11     | 5.636         | VB   | 0.0237      | 161.60429   | 106.67710   | 6.50065  |
| 12     | 5.721         | BP   | 0.0240      | 5.36209     | 3.46788     | 0.21569  |
| 13     | 5.800         | VB   | 0.0238      | 166.44795   | 109.05338   | 6.69548  |
| 14     | 5.987         | PB   | 0.0292      | 25.98585    | 12.53267    | 1.04530  |
| 15     | 9.152         | BB   | 0.0368      | 232.22421   | 94.13593    | 9.34138  |
| 16     | 10.018        | BB   | 0.0417      | 346.98367   | 127.87128   | 13.95766 |

| Peak # | RetTime [min] | Type | Width [min] | Area [pA*s] | Height [pA] | Area %   |
|--------|---------------|------|-------------|-------------|-------------|----------|
| 17     | 10.865        | PP   | 0.0295      | 3.88721     | 2.32112     | 0.15637  |
| 18     | 11.125        | BB   | 0.0452      | 478.16995   | 158.68205   | 19.23472 |
| 19     | 12.642        | BB   | 0.0703      | 115.72092   | 21.31719    | 4.65495  |
| 20     | 13.066        | BB   | 0.0493      | 110.43622   | 32.77827    | 4.44237  |
| 21     | 13.219        | BB   | 0.0431      | 16.18824    | 5.37767     | 0.65118  |
| 22     | 14.064        | BB   | 0.0448      | 16.09375    | 5.10729     | 0.64738  |
| 23     | 15.450        | BB   | 0.0355      | 6.46340     | 2.64198     | 0.25999  |
| 24     | 16.787        | BB   | 0.0503      | 59.92676    | 15.76798    | 2.41060  |
| 25     | 18.032        | BB   | 0.0339      | 3.66788     | 1.78805     | 0.14754  |
| 26     | 19.240        | BB   | 0.0471      | 55.21139    | 16.46107    | 2.22092  |
| 27     | 19.473        | BB   | 0.0611      | 51.91311    | 12.09971    | 2.08824  |
| 28     | 19.731        | BP   | 0.0274      | 4.77105     | 2.72222     | 0.19192  |
| 29     | 19.967        | BP   | 0.0385      | 24.98255    | 9.54307     | 1.00494  |
| 30     | 20.379        | BB   | 0.0361      | 9.84408     | 4.09355     | 0.39598  |
| 31     | 20.654        | BP   | 0.0326      | 3.22216     | 1.58979     | 0.12961  |
| 32     | 20.848        | BB   | 0.0288      | 5.21946     | 2.92119     | 0.20996  |
| 33     | 21.504        | PB   | 0.0421      | 82.48651    | 27.42952    | 3.31808  |
| 34     | 21.666        | BP   | 0.0332      | 19.21054    | 9.25652     | 0.77276  |
| 35     | 21.980        | BP   | 0.0335      | 14.27465    | 6.53635     | 0.57421  |
| 36     | 23.245        | BP   | 0.0416      | 19.05029    | 7.03327     | 0.76631  |
| 37     | 23.807        | BP   | 0.0865      | 18.89989    | 2.95848     | 0.76026  |
| 38     | 24.115        | BB   | 0.0513      | 20.02472    | 5.66263     | 0.80551  |
| 39     | 24.744        | BP   | 0.0581      | 39.67739    | 10.04692    | 1.59605  |
| 40     | 26.581        | BP   | 0.0566      | 40.54175    | 11.36360    | 1.63082  |
| 41     | 28.916        | BP   | 0.0692      | 76.79160    | 15.13776    | 3.08900  |

Totals : 2485.97313 1023.60311

Results obtained with enhanced integrator!

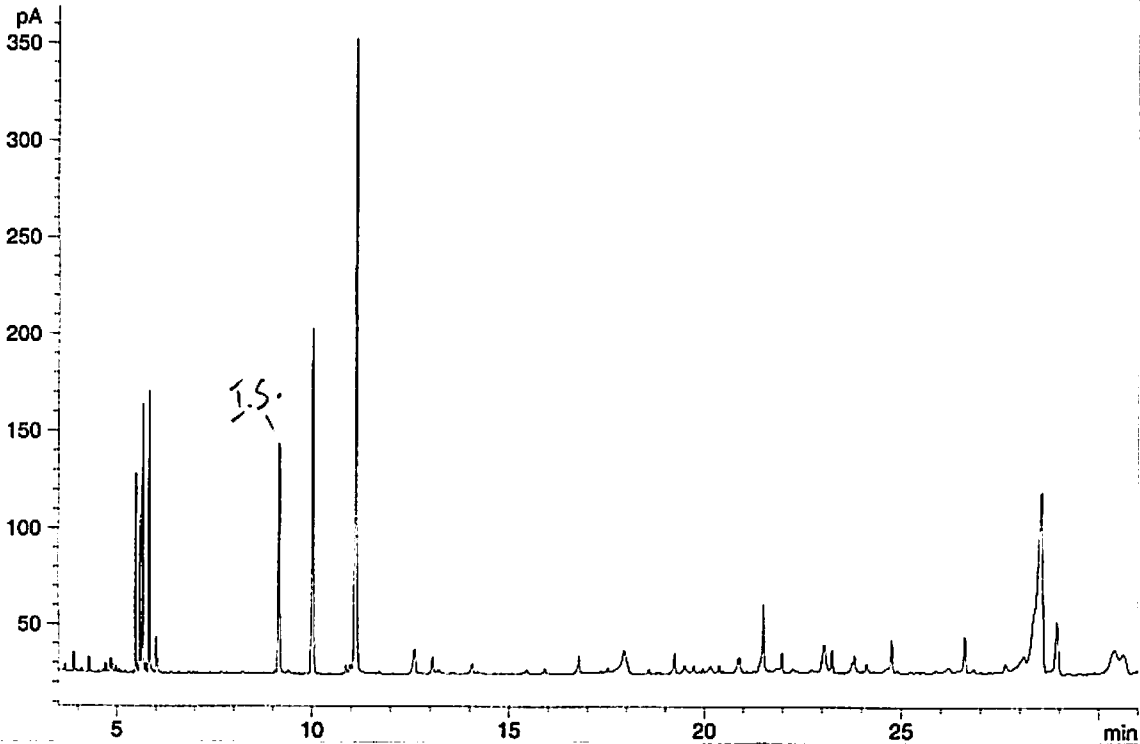
=====  
\*\*\* End of Report \*\*\*

✓ Male #2 Chrysopa oculata abdominal cuticle + 1ul of Z-3  
 -octen-1-ol (50ng/ul) (/50ul conc. to 10ul CH2Cl2), DB-5  
 . Note: Caught 5/22 sweep netting.

```

=====
Injection Date   : 5/23/2008 10:20:04 AM
Sample Name      : M2 C.ocu. abd+IS
Acq. Operator    : Aldrich
Vial             : -
Inj              : 1
Inj Volume       : Manually

Method           : C:\HPCHEM\1\METHODS\DBLESS1.M
Last changed     : 2/29/2008 10:02:00 AM by Aldrich
2/29/07; editing new method for desired output
FID1 A, (C-OCUJA-05231.D)
  
```



```

=====
Area Percent Report
=====
  
```

```

Sorted By      : Signal
Multiplier     : 1.0000
Dilution       : 1.0000
  
```

Signal 1: FID1 A,

| Peak # | RetTime [min] | Type | Width [min] | Area [pA*s] | Height [pA] | Area %  |
|--------|---------------|------|-------------|-------------|-------------|---------|
| 1      | 3.671         | BP   | 0.0165      | 4.37498     | 4.09745     | 0.09208 |
| 2      | 3.893         | PB   | 0.0183      | 12.90329    | 10.54579    | 0.27158 |
| 3      | 4.092         | PB   | 0.0211      | 3.14564     | 2.28211     | 0.06621 |
| 4      | 4.285         | PB   | 0.0209      | 10.79726    | 7.91162     | 0.22726 |
| 5      | 4.712         | BP   | 0.0270      | 8.48638     | 4.50350     | 0.17862 |
| 6      | 4.843         | PV   | 0.0273      | 13.25498    | 6.93642     | 0.27898 |
| 7      | 4.883         | VP   | 0.0225      | 6.10125     | 4.31632     | 0.12842 |
| 8      | 4.971         | BB   | 0.0224      | 5.26514     | 3.75182     | 0.11082 |
| 9      | 5.059         | BB   | 0.0273      | 3.73197     | 2.04162     | 0.07855 |
| 10     | 5.481         | BB   | 0.0232      | 151.87527   | 103.12519   | 3.19660 |
| 11     | 5.587         | BV   | 0.0232      | 121.45475   | 82.59444    | 2.55632 |
| 12     | 5.662         | VB   | 0.0245      | 219.24463   | 138.18460   | 4.61455 |
| 13     | 5.744         | BP   | 0.0241      | 7.42349     | 4.77827     | 0.15625 |
| 14     | 5.825         | VB   | 0.0243      | 227.02118   | 144.69940   | 4.77823 |
| 15     | 6.003         | PV   | 0.0214      | 25.46510    | 18.14264    | 0.53598 |
| 16     | 6.038         | VB   | 0.0232      | 10.40217    | 6.67088     | 0.21894 |

| Peak # | RetTime [min] | Type | Width [min] | Area [pA*s] | Height [pA] | Area %   |
|--------|---------------|------|-------------|-------------|-------------|----------|
| 17     | 9.159         | BB   | 0.0411      | 317.35965   | 118.96738   | 6.67963  |
| 18     | 10.023        | BB   | 0.0447      | 514.13873   | 178.07433   | 10.82134 |
| 19     | 10.868        | PV   | 0.0445      | 11.39856    | 4.09479     | 0.23991  |
| 20     | 10.974        | VV   | 0.0425      | 12.66193    | 4.28455     | 0.26650  |
| 21     | 11.134        | VB   | 0.0458      | 1004.42444  | 326.98627   | 21.14064 |
| 22     | 12.615        | BB   | 0.0644      | 59.31108    | 12.49237    | 1.24835  |
| 23     | 13.067        | BP   | 0.0429      | 23.74396    | 8.16636     | 0.49975  |
| 24     | 13.214        | BB   | 0.0349      | 3.19761     | 1.43885     | 0.06730  |
| 25     | 14.064        | BP   | 0.0455      | 15.83606    | 4.79302     | 0.33331  |
| 26     | 15.905        | BP   | 0.0399      | 6.57981     | 2.40927     | 0.13849  |
| 27     | 16.779        | BB   | 0.0421      | 26.48727    | 8.80390     | 0.55749  |
| 28     | 17.519        | BP   | 0.0283      | 3.81540     | 2.09196     | 0.08030  |
| 29     | 17.934        | BP   | 0.1112      | 83.31512    | 10.31358    | 1.75358  |
| 30     | 18.570        | BB   | 0.0296      | 4.51012     | 2.43277     | 0.09493  |
| 31     | 19.236        | BB   | 0.0363      | 25.55595    | 10.17758    | 0.53789  |
| 32     | 19.489        | BB   | 0.0634      | 15.26641    | 3.60514     | 0.32132  |
| 33     | 19.735        | BP   | 0.0336      | 7.72351     | 3.51771     | 0.16256  |
| 34     | 19.962        | PP   | 0.0288      | 3.87798     | 2.07803     | 0.08162  |
| 35     | 20.378        | BP   | 0.0344      | 7.88613     | 3.62103     | 0.16598  |
| 36     | 20.852        | BV   | 0.0390      | 18.10093    | 6.80157     | 0.38098  |
| 37     | 20.900        | VB   | 0.0350      | 18.27067    | 7.61660     | 0.38455  |
| 38     | 21.508        | BB   | 0.0473      | 116.61505   | 34.62526    | 2.45446  |
| 39     | 21.983        | BP   | 0.0329      | 20.68983    | 9.69575     | 0.43547  |
| 40     | 23.050        | BV   | 0.0860      | 91.08951    | 14.16271    | 1.91721  |
| 41     | 23.253        | VP   | 0.0412      | 32.52708    | 11.78891    | 0.68461  |
| 42     | 23.753        | BV   | 0.0460      | 14.76727    | 4.92019     | 0.31081  |
| 43     | 23.813        | VB   | 0.0494      | 26.93747    | 8.19465     | 0.56697  |
| 44     | 24.120        | BB   | 0.0477      | 13.33077    | 4.23378     | 0.28058  |
| 45     | 24.748        | BP   | 0.0435      | 47.86983    | 16.17009    | 1.00754  |
| 46     | 26.590        | BP   | 0.0547      | 64.53616    | 18.48457    | 1.35833  |
| 47     | 27.623        | PB   | 0.0754      | 18.90382    | 3.84009     | 0.39788  |
| 48     | 28.093        | BV   | 0.1131      | 59.37616    | 6.78152     | 1.24972  |
| 49     | 28.538        | VB   | 0.1390      | 997.31305   | 93.10902    | 20.99096 |
| 50     | 28.927        | BP   | 0.0705      | 135.10269   | 26.94696    | 2.84358  |
| 51     | 30.405        | BB   | 0.1552      | 97.68717    | 7.53681     | 2.05607  |

Totals : 4751.15467 1527.83943

Results obtained with enhanced integrator!

\*\*\* End of Report \*\*\*

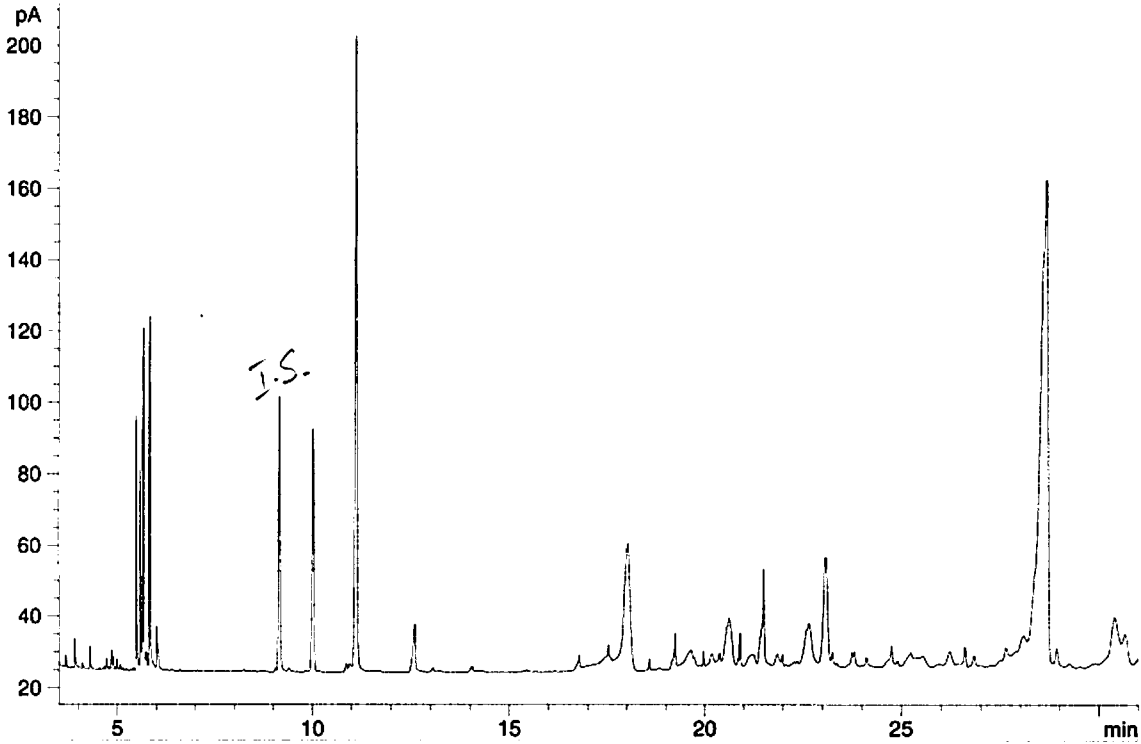
Male #3 Chrysopa oculata abdominal cuticle + 1ul of Z-3  
 -octen-1-ol (50ng/ul) (/50ul conc. to 3ul CH2Cl2), DB-5.

Note: Caught 5/22 sweep netting; actually, all samples  
 run today I injected the entire extract of ~3ul.

```

=====
Injection Date : 5/23/2008 11:00:06 AM
Sample Name    : M3 C.ocu. abd+IS
Acq. Operator  : Aldrich
Vial          : -
Inj           : 1
Inj Volume    : Manually

Method        : C:\HPCHEM\1\METHODS\DBLESS1.M
Last changed  : 2/29/2008 10:02:00 AM by Aldrich
2/29/07; editing new method for desired output
FID1 A, (C-OCUJA-05232.D)
    
```



=====  
 Area Percent Report  
 =====

```

Sorted By      : Signal
Multiplier     : 1.0000
Dilution       : 1.0000
    
```

Signal 1: FID1 A,

| Peak # | RetTime [min] | Type | Width [min] | Area [pA*s] | Height [pA] | Area %  |
|--------|---------------|------|-------------|-------------|-------------|---------|
| 1      | 3.681         | BP   | 0.0174      | 3.40957     | 3.20237     | 0.07333 |
| 2      | 3.906         | PB   | 0.0186      | 10.15518    | 8.13391     | 0.21841 |
| 3      | 4.104         | PB   | 0.0206      | 2.28383     | 1.60031     | 0.04912 |
| 4      | 4.294         | PB   | 0.0209      | 8.35513     | 6.14767     | 0.17970 |
| 5      | 4.721         | BP   | 0.0227      | 4.35555     | 2.87100     | 0.09368 |
| 6      | 4.852         | PV   | 0.0263      | 9.63492     | 5.26835     | 0.20722 |
| 7      | 4.892         | VB   | 0.0215      | 4.87399     | 3.43764     | 0.10483 |
| 8      | 4.979         | BB   | 0.0209      | 4.12017     | 3.01604     | 0.08861 |
| 9      | 5.067         | BB   | 0.0300      | 3.07631     | 1.49369     | 0.06616 |
| 10     | 5.487         | BB   | 0.0235      | 105.83727   | 70.68427    | 2.27628 |
| 11     | 5.592         | BV   | 0.0235      | 83.12566    | 55.33455    | 1.78781 |
| 12     | 5.666         | VB   | 0.0237      | 151.62958   | 94.62186    | 3.26114 |
| 13     | 5.749         | BP   | 0.0249      | 6.58540     | 4.07491     | 0.14163 |
| 14     | 5.828         | VB   | 0.0246      | 155.98544   | 97.76833    | 3.35483 |
| 15     | 6.011         | PB   | 0.0294      | 23.87917    | 11.42490    | 0.51358 |

| Peak # | RetTime [min] | Type | Width [min] | Area [pA*s] | Height [pA] | Area %   |
|--------|---------------|------|-------------|-------------|-------------|----------|
| 16     | 9.159         | BB   | 0.0469      | 229.86876   | 76.79199    | 4.94386  |
| 17     | 10.018        | BP   | 0.0499      | 221.20992   | 68.10526    | 4.75763  |
| 18     | 10.866        | PB   | 0.0449      | 4.52753     | 1.60411     | 0.09737  |
| 19     | 11.125        | BB   | 0.0519      | 604.12512   | 176.47798   | 12.99311 |
| 20     | 12.606        | BB   | 0.0586      | 58.55051    | 13.22761    | 1.25926  |
| 21     | 16.777        | BB   | 0.0370      | 9.21157     | 3.58389     | 0.19812  |
| 22     | 17.522        | BB   | 0.0337      | 8.93091     | 3.90476     | 0.19208  |
| 23     | 17.995        | BV   | 0.0683      | 174.34375   | 32.66431    | 3.74967  |
| 24     | 18.034        | VB   | 0.0631      | 168.57390   | 34.44708    | 3.62557  |
| 25     | 18.575        | BB   | 0.0284      | 5.70264     | 3.10356     | 0.12265  |
| 26     | 19.238        | BP   | 0.0455      | 30.51427    | 9.25400     | 0.65628  |
| 27     | 19.965        | PP   | 0.0290      | 7.23748     | 4.02052     | 0.15566  |
| 28     | 20.380        | BB   | 0.0370      | 6.02888     | 2.42942     | 0.12966  |
| 29     | 20.623        | BP   | 0.1314      | 131.61337   | 12.75397    | 2.83065  |
| 30     | 20.905        | VP   | 0.0350      | 21.77728    | 9.08747     | 0.46837  |
| 31     | 21.507        | PB   | 0.0567      | 106.07313   | 25.96566    | 2.28135  |
| 32     | 21.987        | BP   | 0.0289      | 4.29034     | 2.51317     | 0.09227  |
| 33     | 22.663        | BB   | 0.1364      | 117.73811   | 10.77833    | 2.53223  |
| 34     | 23.087        | BV   | 0.0958      | 219.51840   | 29.85352    | 4.72125  |
| 35     | 23.257        | VB   | 0.0393      | 8.44585     | 3.24763     | 0.18165  |
| 36     | 23.754        | BV   | 0.0436      | 10.96383    | 3.59306     | 0.23580  |
| 37     | 23.814        | VB   | 0.0421      | 11.60955    | 3.85543     | 0.24969  |
| 38     | 24.120        | BB   | 0.0445      | 6.97202     | 2.22982     | 0.14995  |
| 39     | 24.755        | BP   | 0.0466      | 15.11654    | 4.82515     | 0.32512  |
| 40     | 26.596        | BP   | 0.0517      | 16.94486    | 5.10879     | 0.36444  |
| 41     | 26.825        | BB   | 0.0615      | 11.33118    | 2.78515     | 0.24370  |
| 42     | 28.673        | BP   | 0.1655      | 1767.99390  | 134.41023   | 38.02479 |
| 43     | 28.922        | VB   | 0.0599      | 19.46003    | 4.55020     | 0.41853  |
| 44     | 30.398        | PB   | 0.1093      | 73.60098    | 8.55917     | 1.58296  |

RT 13.066; area = 3.3

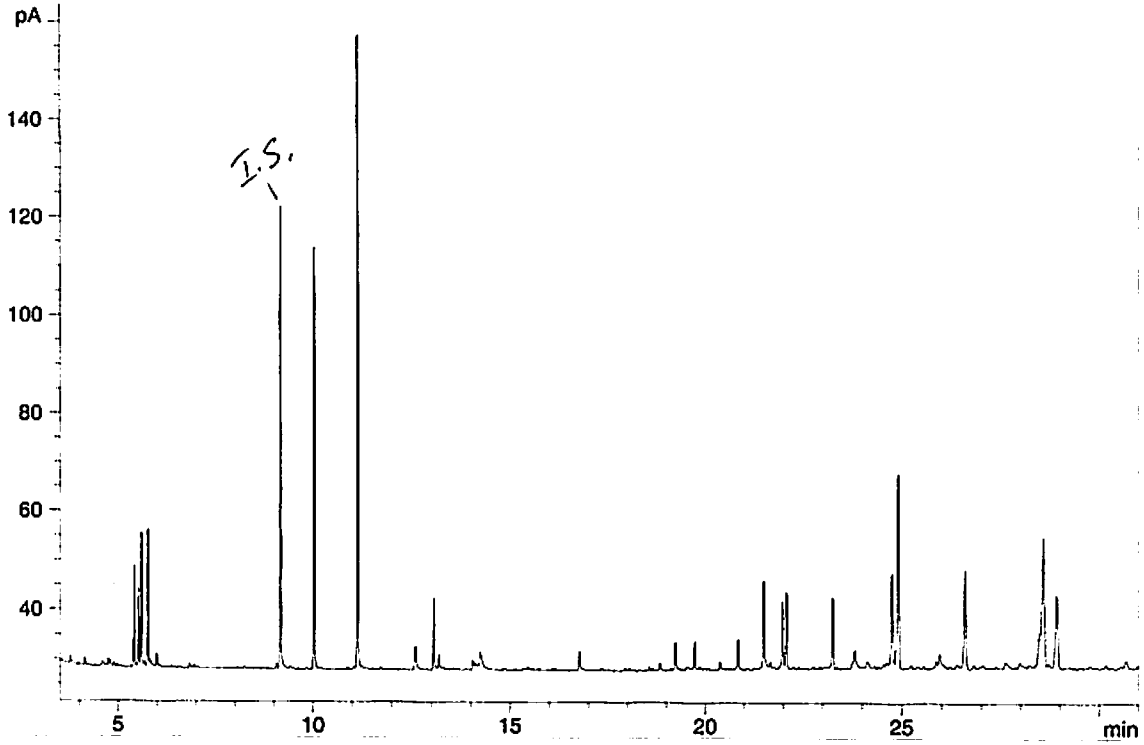
Totals : 4649.58175 1062.81104

Results obtained with enhanced integrator!

\*\*\* End of Report \*\*\*

Male #1 Chrysopa oculata abdominal cuticle + 1ul of Z-3 -octen-1-ol (50ng/ul) (/50ul conc. to 3ul CH2Cl2), DB-5.  
Note: Injected the entire extract of ~3ul; coll. sweeping 5/23.

=====  
Injection Date : 5/24/2008 1:33:54 PM  
Sample Name : M1 C.ocu. abd+IS  
Acq. Operator : Aldrich  
Vial : -  
Inj : 1  
Inj Volume : Manually  
Method : C:\HPCHEM\1\METHODS\DBLESS1.M  
Last changed : 2/29/2008 10:02:00 AM by Aldrich  
2/29/07; editing new method for desired output  
FID1 A, (C-OCUJA-05240.D)



=====  
Area Percent Report  
=====

Sorted By : Signal  
Multiplier : 1.0000  
Dilution : 1.0000

Signal 1: FID1 A,

| Peak # | RetTime [min] | Type | Width [min] | Area [pA*s] | Height [pA] | Area %             |
|--------|---------------|------|-------------|-------------|-------------|--------------------|
| 1      | 4.137         | PB   | 0.0207      | 2.01945     | 1.50348     | 0.14953            |
| 2      | 4.739         | PB   | 0.0249      | 2.54360     | 1.49018     | 0.18834            |
| 3      | 5.400         | PB   | 0.0230      | 29.60558    | 20.36728    | 2.19208            |
| 4      | 5.511         | PV   | 0.0231      | 23.20639    | 15.85104    | 1.71827            |
| 5      | 5.584         | VB   | 0.0230      | 38.74371    | 26.51748    | 2.86870            |
| 6      | 5.754         | PP   | 0.0234      | 40.46590    | 27.20241    | 2.99621            |
| 7      | 5.982         | PB   | 0.0259      | 4.68111     | 2.61534     | 0.34660            |
| 8      | 9.158         | BB   | 0.0271      | 160.16942   | 93.08414    | 11.85940           |
| 9      | 10.024        | BB   | 0.0261      | 146.60625   | 85.24084    | 10.85515 - monanal |
| 10     | 11.133        | BB   | 0.0264      | 224.29924   | 128.18231   | 16.60776 - monanal |
| 11     | 12.605        | PB   | 0.0471      | 14.57211    | 4.70538     | 1.07896            |
| 12     | 13.067        | BB   | 0.0309      | 27.61856    | 14.10098    | 2.04496 - indodial |
| 13     | 13.196        | PP   | 0.0297      | 5.40557     | 2.77300     | 0.40024            |
| 14     | 14.059        | PB   | 0.0273      | 2.91305     | 1.59888     | 0.21569            |
| 15     | 14.238        | PB   | 0.0416      | 8.32976     | 2.80496     | 0.61676            |

| Peak # | RetTime [min] | Type | Width [min] | Area [pA*s] | Height [pA] | Area %  |
|--------|---------------|------|-------------|-------------|-------------|---------|
| 16     | 16.776        | BB   | 0.0319      | 8.08591     | 3.78156     | 0.59870 |
| 17     | 19.234        | BB   | 0.0317      | 11.00860    | 5.42841     | 0.81511 |
| 18     | 19.735        | BP   | 0.0283      | 10.04833    | 5.49625     | 0.74401 |
| 19     | 20.850        | BB   | 0.0287      | 11.32750    | 6.08638     | 0.83872 |
| 20     | 21.502        | BB   | 0.0338      | 37.92960    | 17.15381    | 2.80842 |
| 21     | 21.984        | BV   | 0.0333      | 28.73876    | 13.26942    | 2.12790 |
| 22     | 22.080        | VP   | 0.0332      | 33.09731    | 15.33829    | 2.45062 |
| 23     | 23.253        | BP   | 0.0385      | 34.62203    | 14.15492    | 2.56351 |
| 24     | 23.812        | BB   | 0.0498      | 11.15984    | 3.27125     | 0.82631 |
| 25     | 24.751        | BB   | 0.0435      | 53.23800    | 18.55546    | 3.94189 |
| 26     | 24.899        | BB   | 0.0443      | 110.94831   | 38.84958    | 8.21493 |
| 27     | 25.945        | BB   | 0.0521      | 7.83572     | 2.27737     | 0.58018 |
| 28     | 26.588        | BP   | 0.0475      | 65.99481    | 19.47974    | 4.88645 |
| 29     | 28.572        | BB   | 0.0748      | 132.78416   | 25.46851    | 9.83172 |
| 30     | 28.910        | PP   | 0.0676      | 62.57025    | 14.41719    | 4.63288 |

Totals : 1350.56883 631.06584

Results obtained with enhanced integrator!

=====  
\*\*\* End of Report \*\*\*



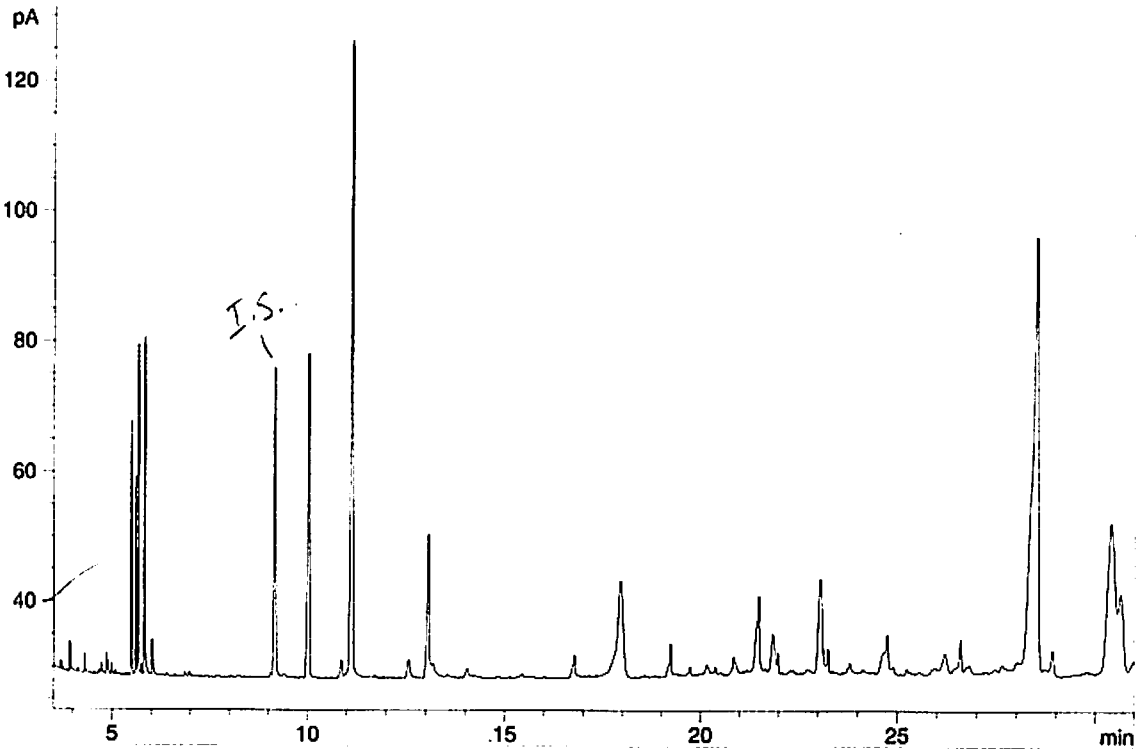
Male #2 Chrysopa oculata abdominal cuticle + 1ul of Z-3  
 -octen-1-ol (50ng/ul) (/50ul conc. to 3ul CH2Cl2), DB-5.

Note: Injected the entire extract of ~3ul; coll. sweep  
 ing 5/23.

```

=====
Injection Date : 5/24/2008 2:15:59 PM
Sample Name    : M2 C.ocu. abd+IS
Acq. Operator  : Aldrich
Vial           : -
Inj            : 1
Inj Volume    : Manually

Method         : C:\HPCHEM\1\METHODS\DBLESS1.M
Last changed  : 2/29/2008 10:02:00 AM by Aldrich
2/29/07; editing new method for desired output
FID1 A, (C-OCUJA-05241.D)
    
```



Area Percent Report

```

Sorted By      : Signal
Multiplier     : 1.0000
Dilution       : 1.0000
    
```

Signal 1: FID1 A,

| Peak # | RetTime [min] | Type | Width [min] | Area [pA*s] | Height [pA] | Area %  |
|--------|---------------|------|-------------|-------------|-------------|---------|
| 1      | 3.689         | PP   | 0.0161      | 1.54749     | 1.49178     | 0.06087 |
| 2      | 3.919         | PB   | 0.0188      | 5.87384     | 4.63134     | 0.23103 |
| 3      | 4.301         | PB   | 0.0201      | 3.86492     | 2.99211     | 0.15202 |
| 4      | 4.732         | BP   | 0.0230      | 2.44193     | 1.57847     | 0.09605 |
| 5      | 4.858         | PV   | 0.0240      | 5.34920     | 3.27983     | 0.21040 |
| 6      | 4.899         | VB   | 0.0213      | 2.79155     | 2.00018     | 0.10980 |
| 7      | 4.985         | PP   | 0.0202      | 2.33554     | 1.78926     | 0.09186 |
| 8      | 5.489         | BB   | 0.0219      | 53.07755    | 38.87034    | 2.08767 |
| 9      | 5.595         | BV   | 0.0213      | 42.51964    | 30.46233    | 1.67240 |
| 10     | 5.666         | VB   | 0.0224      | 71.34306    | 50.61925    | 2.80610 |
| 11     | 5.754         | BP   | 0.0245      | 2.79143     | 1.76262     | 0.10979 |
| 12     | 5.827         | VB   | 0.0234      | 76.91996    | 51.66477    | 3.02545 |
| 13     | 6.020         | PB   | 0.0303      | 12.04897    | 5.55793     | 0.47392 |
| 14     | 9.157         | BB   | 0.0492      | 147.03278   | 47.42173    | 5.78316 |
| 15     | 10.021        | BB   | 0.0552      | 174.96461   | 49.50938    | 6.88179 |

I.S.  
 nonanal

| Peak # | RetTime [min] | Type | Width [min] | Area [pA*s] | Height [pA] | Area %   |
|--------|---------------|------|-------------|-------------|-------------|----------|
| 16     | 10.867        | PP   | 0.0512      | 7.84933     | 2.46212     | 0.30873  |
| 17     | 11.116        | BB   | 0.0486      | 362.68472   | 97.15283    | 14.26528 |
| 18     | 12.569        | BB   | 0.0590      | 12.99440    | 2.70714     | 0.51110  |
| 19     | 13.067        | BB   | 0.0466      | 70.80232    | 20.83921    | 2.78483  |
| 20     | 16.775        | BB   | 0.0386      | 8.42827     | 3.11294     | 0.33150  |
| 21     | 17.946        | BP   | 0.1079      | 118.23598   | 13.54045    | 4.65051  |
| 22     | 19.234        | BB   | 0.0348      | 11.20859    | 4.71082     | 0.44086  |
| 23     | 21.447        | BV   | 0.0553      | 30.98402    | 7.48593     | 1.21868  |
| 24     | 21.496        | VB   | 0.0377      | 29.73279    | 11.30565    | 1.16946  |
| 25     | 21.850        | BV   | 0.0762      | 35.42372    | 5.80534     | 1.39330  |
| 26     | 21.984        | VP   | 0.0349      | 7.38551     | 3.20647     | 0.29049  |
| 27     | 23.055        | PV   | 0.0839      | 97.92822    | 14.29927    | 3.85176  |
| 28     | 23.254        | VP   | 0.0462      | 11.08644    | 3.57724     | 0.43606  |
| 29     | 24.749        | BP   | 0.0525      | 16.03050    | 4.61817     | 0.63052  |
| 30     | 26.591        | BP   | 0.0527      | 16.14090    | 4.74510     | 0.63486  |
| 31     | 28.499        | BB   | 0.1335      | 680.10938   | 66.42564    | 26.75038 |
| 32     | 28.908        | BP   | 0.0671      | 14.75097    | 3.43490     | 0.58019  |
| 33     | 30.404        | BV   | 0.1617      | 297.37250   | 22.86571    | 11.69639 |
| 34     | 30.657        | VP   | 0.1200      | 108.37788   | 11.81621    | 4.26277  |

*nonanol*  
*nonanoic acid*  
*undecal*

Totals : 2542.42892 597.74245

Results obtained with enhanced integrator!

=====  
\*\*\* End of Report \*\*\*