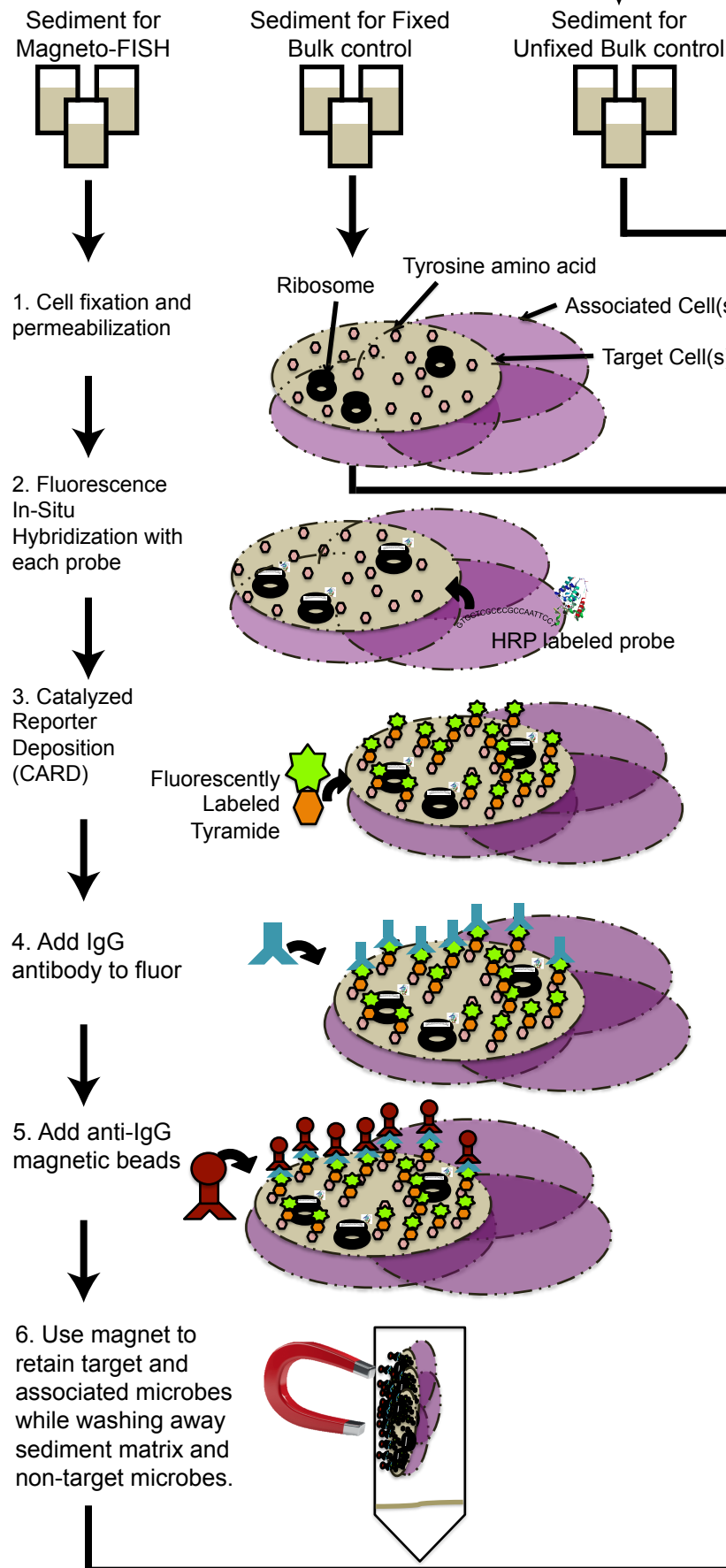


## MagnetoFISH enrichment

## 16S rRNA Gene Sequencing

7. DNA extraction of MagnetoFISH enrichments, fixed and unfixed bulk sediment



8. iTag sequencing

8. Gene (clone) sequencing

9. mothur sequence processing and taxonomic assignment

9. manual sequence trimming and SILVA online aligner

10. Determine OTUs <0.1% relative sequence abundance in unfixed bulk sediment

10. Determine sequences in Magneto-FISH enrichments that are not in bulk sediment

11. Remove these OTUs from Magneto-FISH, unfixed and fixed bulk sediment and prepare sequence count table of all samples

11. Remove these sequences from Magneto-FISH enrichment libraries and prepare sequence count table of all samples

12. SparCC analysis and network generation