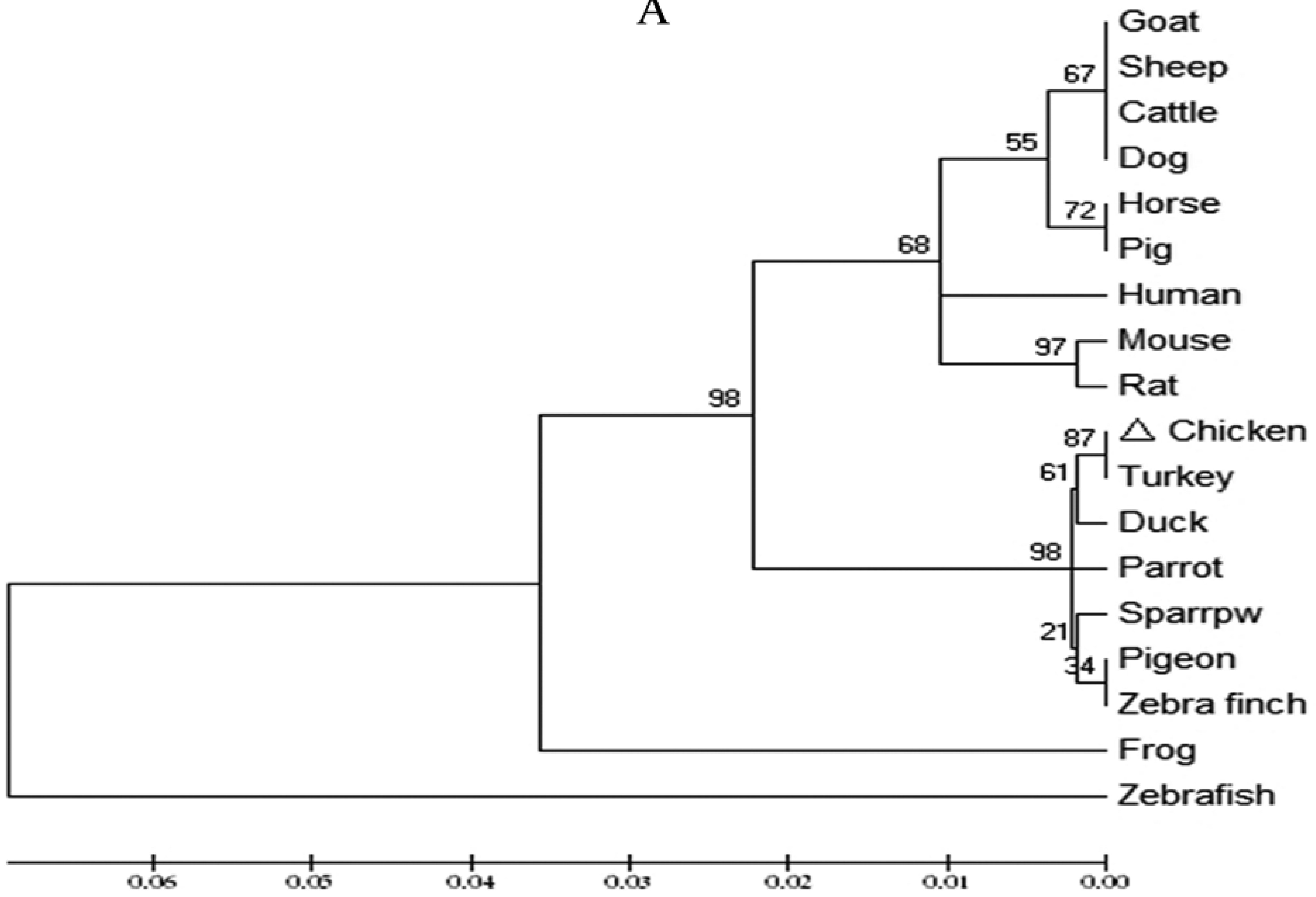


Percent Identity

	1	2	3	4	5	6	7	8	9	10	11	12	13	14	15	16	17	18			
Divergence	1	█	95.6	99.6	96.0	93.5	100.0	98.9	97.8	97.1	96.0	99.3	96.0	96.7	100.0	96.0	95.6	96.4	86.6	1	Cattle
	2	4.5	█	96.0	99.3	91.3	95.6	96.0	94.5	93.8	98.5	96.0	98.5	93.8	95.6	98.5	100.0	98.9	85.8	2	Chicke
	3	0.4	4.1	█	96.4	93.5	99.6	99.3	98.2	97.5	96.4	99.6	96.4	97.1	99.6	96.4	96.0	96.7	87.0	3	Dog
	4	4.1	0.7	3.7	█	91.6	96.0	96.4	94.9	94.2	99.3	96.4	99.3	94.2	96.0	99.3	99.3	99.6	86.2	4	Duck
	5	6.9	9.3	6.9	8.9	█	93.5	93.5	93.1	92.4	92.0	93.5	91.6	92.7	93.5	91.6	91.3	92.0	88.0	5	Frog
	6	0.0	4.5	0.4	4.1	6.9	█	98.9	97.8	97.1	96.0	99.3	96.0	96.7	100.0	96.0	95.6	96.4	86.6	6	Goat
	7	1.1	4.1	0.7	3.7	6.9	1.1	█	98.2	97.5	96.4	99.6	96.4	97.5	98.9	96.4	96.0	96.7	87.0	7	Horse
	8	2.2	5.7	1.8	5.3	7.3	2.2	1.8	█	97.1	94.9	98.6	94.9	97.1	97.8	94.9	94.5	95.3	87.0	8	Human
	9	3.0	6.5	2.6	6.1	8.1	3.0	2.6	3.0	█	94.5	97.8	94.2	98.9	97.1	94.2	93.8	94.5	85.9	9	Mouse
	10	4.1	1.5	3.7	0.7	8.5	4.1	3.7	5.3	5.7	█	96.4	99.3	94.5	96.0	99.3	98.5	99.6	86.5	10	Parrot
	11	0.7	4.1	0.4	3.7	6.9	0.7	0.4	1.5	2.2	3.7	█	96.4	97.5	99.3	96.4	96.0	96.7	87.0	11	Pig
	12	4.1	1.5	3.7	0.7	8.9	4.1	3.7	5.3	6.1	0.7	3.7	█	94.2	96.0	99.3	98.5	99.6	86.2	12	Pigeon
	13	3.3	6.5	3.0	6.1	7.7	3.3	2.6	3.0	1.1	5.7	2.6	6.1	█	96.7	94.2	93.8	94.5	86.2	13	Rat
	14	0.0	4.5	0.4	4.1	6.9	0.0	1.1	2.2	3.0	4.1	0.7	4.1	3.3	█	96.0	95.6	96.4	86.6	14	Sheep
	15	4.1	1.5	3.7	0.7	8.9	4.1	3.7	5.3	6.1	0.7	3.7	0.7	6.1	4.1	█	98.5	99.6	86.9	15	Sparrow
	16	4.5	0.0	4.1	0.7	9.3	4.5	4.1	5.7	6.5	1.5	4.1	1.5	6.5	4.5	1.5	█	98.9	85.8	16	Turkey
	17	3.7	1.1	3.3	0.4	8.5	3.7	3.3	4.9	5.7	0.4	3.3	0.4	5.7	3.7	0.4	1.1	█	86.5	17	Zebra finch
	18	14.8	15.8	14.4	15.3	13.1	14.8	14.4	14.4	15.7	14.9	14.4	15.3	15.3	14.8	14.4	15.8	14.9	█	18	Zebrafish
	1	2	3	4	5	6	7	8	9	10	11	12	13	14	15	16	17	18			

A



B