

Supplementary Data

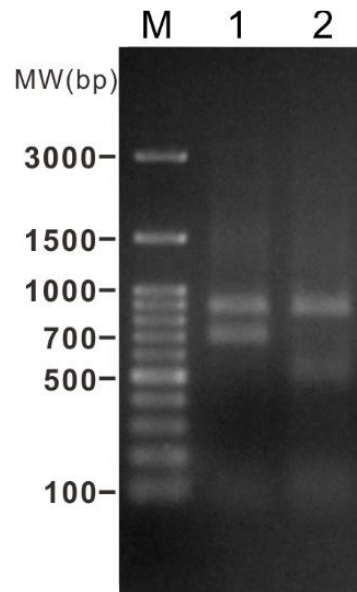


Fig S1. Restriction fragment length polymorphism (RFLP) analysis of free-living cultured clade C and clade B *Symbiodinium*. Amplified genomic fragments of small subunit ribosomal RNA genes (18S rDNA) from *Symbiodinium* were digested using the restriction enzymes *TaqI*. Lane 1: The free-living cultured clade C *Symbiodinium* (CCMP 2466). Lane 2: Free-living cultured clade B *Symbiodinium* (originally from *Exaiptasia pallida*). M: marker. MW: molecular weight.