

The origin of widespread species in a poor dispersing lineage (diving beetle genus *Deronectes*)

David García-Vázquez and Ignacio Ribera

Institute of Evolutionary Biology (CSIC-Universitat Pompeu Fabra), Passeig Marítim de la Barceloneta 37, 08003 Barcelona, Spain

ELECTRONIC SUPPLEMENTAL INFORMATION

Table S1. List of the specimens included in the phylogeography, with specimen voucher, locality, collector, Genbank accession numbers and specimens tested for infection of *Wolbachia*. In grey, species in other groups of *Deronectes* used as outgroups. In bold, sequences newly obtained for this study.

The origin of widespread species in a generally poor dispersing lineage (diving beetle genus *Deronectes*)

García-Vázquez, D. & Ribera, I.

Appendix S1: Additional materials.

Table S1. List of the specimens included in the phylogeography, with specimen voucher, locality, collector, Genbank accession numbers and specimens tested for infection of *Wolbachia*. In grey, species in other groups of *Deronectes* used as outgroups. In bold, sequences newly obtained for this study.

No	Species	Voucher	Country (Island)	Locality	Locality cod	Coordinates	Collector	Accession numbers					Wolbachia	Wolbachia			
								COI-5'	COI-3'	16SrRNA+trRNA-Leu+NAD1	H3	Wingless	Wsp (wolbachia)	Infected	Supergroup		
1	<i>D. angelinii</i>	IBE-RA234	Italy	Marche, Ascoli-Piceno province, Quintodecimo	ITACN2	ca. 42°45'48"N 13°23'13"E	M. Toledo	LN995087	LN995061	LN995162	LN995127	LT602418	LT602610	YES	B		
2	<i>D. angelinii</i>	NHM-IR301	Italy	Lombardia, Pavia province, San Pozzo	ITAN4	ca. 44°50'23"N 9°6'23"E	I. Ribera & A. Cieslak					LT602509		-			
3	<i>D. angusi</i>	IBE-DV67	Spain	Galicia, Lugo province, Viveiro	ESPNN017	ca. 43°37'17"N 7°38'11"W	C. Benneti		LT602087	LT601819	LT602510	LT602335	LT602419	NO			
4	<i>D. angusi</i>	IBE-DV68	Spain	Galicia, Lugo province, Viveiro	ESPNN017	ca. 43°37'17"N 7°38'11"W	C. Benneti		LT602088	LT601820				-			
5	<i>D. angusi</i>	IBE-RA442	Spain	Galicia, Lugo province, Quintá	ESPNN06	ca. 42°58'18"N 7°13'14"W	I. Ribera		LT602089	LT601821				-			
6	<i>D. angusi</i>	IBE-RA443	Spain	Galicia, Lugo province, Quintá	ESPNN06	ca. 42°58'18"N 7°13'14"W	I. Ribera	LN995088	LN995063			LT602336	LT602420	-			
7	<i>D. angusi</i>	MNHN-AI1273	Spain	Castilla y León, Burgos province, Pineda de la Sierra	ESPNN02	ca. 42°13'40"N 3°18'15"W	D.T. Bilton		LT602090	LT601822				-			
8	<i>D. angusi</i>	NHM-IR44	Spain	Galicia, Lugo province, Quintá	ESPNN06	ca. 42°58'18"N 7°13'14"W	I. Ribera				AF309310	AF309253	EF670135	-			
9	<i>D. angusi</i>	NHM-IR253	Spain	Castilla y León, Burgos province, Pineda de la Sierra	ESPNN04	ca. 42°13'40"N 3°18'15"W	I. Ribera				LN995062	AF309253		-			
10	<i>D. aubei aubei</i>	IBE-DV60	Italy	Lombardia, Brescia province, Val Palot	ITAN7	ca. 45°47'22"N 10°10'38"E	M. Toledo		LT602091	LT601823	LT602511		LT602338	LT602421	YES	undetermined	
11	<i>D. aubei aubei</i>	IBE-DV61	Italy	Lombardia, Brescia province, Val Palot	ITAN7	ca. 45°47'22"N 10°10'38"E	M. Toledo		LT602092	LT601824				-			
12	<i>D. aubei aubei</i>	IBE-DV138	Germany	Baden Württemberg, Karlsruhe region, Eyachmühle	ALE3	48°48'30.8"N 8°33'27.1"E	I. Ribera & A. Cieslak		LT602093	LT601825	LT602512		LT602339	LT602422	YES	undetermined	
13	<i>D. aubei aubei</i>	IBE-DV139	Germany	Baden Württemberg, Karlsruhe region, Eyachmühle	ALE3	48°48'30.8"N 8°33'27.1"E	I. Ribera & A. Cieslak		LT602094	LT601826	LT602513		LT602340		-		
14	<i>D. aubei aubei</i>	IBE-DV144	Germany	Baden Württemberg, Karlsruhe region, Buhlbach	ALE4	48°31'58.9"N 8°16'35.4"E	I. Ribera & A. Cieslak		LT602095	LT601827	LT602514		LT602341		-		
15	<i>D. aubei aubei</i>	IBE-DV145	Germany	Baden Württemberg, Karlsruhe region, Buhlbach	ALE4	48°31'58.9"N 8°16'35.4"E	I. Ribera & A. Cieslak		LT602096	LT601828	LT602515		LT602342	LT602423	LT602611	YES	A
16	<i>D. aubei aubei</i>	IBE-DV150	Italy	Lombardia, Brescia province, Val Palot	ITAN7	ca. 45°47'22"N 10°10'38"E	M. Toledo		LT602097	LT601829	LT602516		LT602343	LT602424		-	
17	<i>D. aubei aubei</i>	IBE-DV165	Italy	Lombardia, Brescia province, Val Palot	ITAN7	ca. 45°47'22"N 10°10'38"E	M. Toledo		LT602098					-			
18	<i>D. aubei aubei</i>	IBE-DV170	Germany	Baden Württemberg, Karlsruhe region, Eyachmühle	ALE3	48°48'30.8"N 8°33'27.1"E	I. Ribera & A. Cieslak		LT602099	LT601830				-			
19	<i>D. aubei aubei</i>	IBE-DV171	Germany	Baden Württemberg, Karlsruhe region, Eyachmühle	ALE3	48°48'30.8"N 8°33'27.1"E	I. Ribera & A. Cieslak		LT602100	LT601831				-			
20	<i>D. aubei aubei</i>	IBE-DV174	Germany	Baden Württemberg, Karlsruhe region, Buhlbach	ALE4	48°31'58.9"N 8°16'35.4"E	I. Ribera & A. Cieslak		LT602101	LT601832				-			
21	<i>D. aubei aubei</i>	IBE-DV185	Germany	Baden Württemberg, Karlsruhe region, Buhlbach	ALE4	48°31'58.9"N 8°16'35.4"E	I. Ribera & A. Cieslak		LT602102					-			
22	<i>D. aubei aubei</i>	IBE-RA135	Italy	Emilia-Romagna, Modena province, Fanano	ITAN5	ca. 44°10'29"N 10°47'56"E	M. Toledo	LN995089	LN995064	LN995164	LN995128	LT602425	LT602612	YES	A		
23	<i>D. aubei aubei</i>	IBE-RA139	Italy	Lombardia, Brescia province, Val Palot	ITAN7	ca. 45°47'22"N 10°10'38"E	M. Toledo		LT602103					-			
24	<i>D. aubei aubei</i>	MNCN-AI299	Italy	Lombardia, Brescia province, Val Trompia	ITAN3	45°49'52"N 10°23'58"E	I. Ribera & A. Cieslak		LT602104					-			
25	<i>D. aubei aubei</i>	MNCN-AI1211	Italy	Lombardia, Brescia province, Val Trompia	ITAN3	45°49'52"N 10°23'58"E	I. Ribera & A. Cieslak		LT602105	LT601834	LT602517		LT602344	LT602426	-		
26	<i>D. aubei aubei</i>	NHM-IR300	France	Provence-Alpes-Côte D'azur, Alpes-Maritimes department, Moulinet	FRAE3	ca. 43°58'34"N 7°24'44"E	I. Ribera & A. Cieslak				AF309326	AF309269	EF670136		-		
27	<i>D. aubei aubei</i>	NHM-IR304	Switzerland	Canton of Ticino, Leventina district, Giornico	SUI1	ca. 46°24'20"N 8°52'16"E	I. Ribera & A. Cieslak				AF309326	AF309269	EF670136		-		
28	<i>D. aubei sanfilippoi</i>	IBE-DV9	Spain	Cantabria, Urdón river	ESPNN010	43°16'0.76"N 4°37'59.31"W	A. Millán et col.		LT602106	LT601836	LT602519		LT602345	LT602427	NO		
29	<i>D. aubei sanfilippoi</i>	IBE-DV10	Spain	Cantabria, Urdón river	ESPNN010	43°16'0.76"N 4°37'59.31"W	A. Millán et col.		LT602107	LT601837				-			
30	<i>D. aubei sanfilippoi</i>	IBE-DV11	Spain	Cantabria, Canal del Valle	ESPNN011	ca. 43°12'54"N 4°39'15"W	A. Millán et col.		LT602108	LT601838	LT602520		LT602346	LT602428	NO		
31	<i>D. aubei sanfilippoi</i>	IBE-DV12	Spain	Cantabria, Canal del Valle	ESPNN011	ca. 43°12'54"N 4°39'15"W	A. Millán et col.		LT602109	LT601839				-			
32	<i>D. aubei sanfilippoi</i>	IBE-DV13	Spain	Castilla y León, León province, Picos de Europa	ESPNN012	ca. 43°6'34"N 4°56'40"W	A. Millán et col.		LT602110	LT601840	LT602521		LT602347	LT602429	NO		
33	<i>D. aubei sanfilippoi</i>	IBE-DV14	Spain	Cataluña, Lleida province, San Juan de Torán	ESPPR14	42°49'30.09"N 0°46'40.19"E	I. Ribera & A. Cieslak		LT602111	LT601841	LT602522		LT602348	LT602430	YES	undetermined	
34	<i>D. aubei sanfilippoi</i>	IBE-DV15	Spain	Cataluña, Lleida province, San Juan de Torán	ESPPR14	42°49'30.09"N 0°46'40.19"E	I. Ribera & A. Cieslak		LT602112	LT601842				-			
35	<i>D. aubei sanfilippoi</i>	IBE-DV16	Spain	Cataluña, Lleida province, San Juan de Torán	ESPPR14	42°49'30.09"N 0°46'40.19"E	I. Ribera & A. Cieslak		LT602113	LT601843				-			
36	<i>D. aubei sanfilippoi</i>	IBE-DV20	Spain	Cantabria, Vada (Quivies river)	ESPNN014	43°5'22"N 4°40'30"W	L.F. Valladares		LT602114	LT601844	LT602523		LT602349	LT602431	NO		
37	<i>D. aubei sanfilippoi</i>	IBE-DV21	Spain	Cantabria, Vada (Quivies river)	ESPNN014	43°5'22"N 4°40'30"W	L.F. Valladares		LT602115	LT601845				-			
38	<i>D. aubei sanfilippoi</i>	IBE-DV22	Spain	Cantabria, Vada (Quivies river)	ESPNN014	43°5'22"N 4°40'30"W	L.F. Valladares		LT602116	LT601846				-			
39	<i>D. aubei sanfilippoi</i>	IBE-DV23	Spain	Cantabria, Bárago	ESPNN015	ca. 43°4'23"N 4°37'06"W	L.F. Valladares	LN995090	LN995065	LN995165	LN995129	LT602432		NO			
40	<i>D. aubei sanfilippoi</i>	IBE-DV24	Spain	Cantabria, Bárago	ESPNN015	ca. 43°4'23"N 4°37'06"W	L.F. Valladares		LT602117	LT601847				-			
41	<i>D. aubei sanfilippoi</i>	IBE-DV25	Spain	Cantabria, Bárago	ESPNN015	ca. 43°4'23"N 4°37'06"W	L.F. Valladares		LT602118	LT601848				-			
42	<i>D. aubei sanfilippoi</i>	IBE-DV26	Spain	Cantabria, Vada (Vejo river)	ESPNN016	43°5'24"N 4°40'33"W	L.F. Valladares		LT602119	LT601849	LT602524			-			
43	<i>D. aubei sanfilippoi</i>	IBE-DV27	Spain	Cantabria, Vada (Vejo river)	ESPNN016	43°5'24"N 4°40'33"W	L.F. Valladares		LT602120	LT601850				-			
44	<i>D. aubei sanfilippoi</i>	IBE-DV28	Spain	Cantabria, Vada (Vejo river)	ESPNN016	43°5'24"N 4°40'33"W	L.F. Valladares		LT602121	LT601851				-			
45	<i>D. aubei sanfilippoi</i>	IBE-DV97	Spain	Cantabria, Canal del Valle	ESPNN011	ca. 43°12'54"N 4°39'15"W	A. Millán et col.		LT602122	LT601852				-			
46	<i>D. aubei sanfilippoi</i>	IBE-DV101	Spain	Cataluña, Lleida province, San Juan de Torán	ESPPR14	42°49'30.09"N 0°46'40.19"E	I. Ribera & A. Cieslak		LT602123	LT601853	LT602525		LT602350	LT602433	-		
47	<i>D. aubei sanfilippoi</i>	IBE-DV102	Spain	Cataluña, Lleida province, San Juan de Torán	ESPPR14	42°49'30.09"N 0°46'40.19"E	I. Ribera & A. Cieslak		LT602124	LT601854				-			
48	<i>D. aubei sanfilippoi</i>	IBE-DV103	Spain	Cantabria, Vada (Quivies river)	ESPNN014	43°5'22"N 4°40'30"W	L.F. Valladares		LT602125	LT601855				-			
49	<i>D. aubei sanfilippoi</i>	IBE-DV104	Spain	Cantabria, Vada (Quivies river)	ESPNN014	43°5'22"N 4°40'30"W	L.F. Valladares		LT602126	LT601856				-			
50	<i>D. aubei sanfilippoi</i>	IBE-DV108	Spain	Cantabria, Bárago	ESPNN015	ca. 43°4'23"N 4°37'06"W	L.F. Valladares		LT602127	LT601857				-			
51	<i>D. aubei sanfilippoi</i>	IBE-DV109	Spain	Cantabria, Bárago	ESPNN015	ca. 43°4'23"N 4°37'06"W	L.F. Valladares		LT602128	LT601858				-			
52	<i>D. aubei sanfilippoi</i>	IBE-DV110	Spain	Cantabria, Vada (Vejo river)	ESPNN016	43°5'24"N 4°40'33"W	L.F. Valladares		LT602129	LT601859	LT602526		LT602351	LT602434	NO		
53	<i>D. aubei sanfilippoi</i>	IBE-DV111	Spain	Cantabria, Vada (Vejo river)	ESPNN016	43°5'24"N 4°40'33"W	L.F. Valladares		LT602130	LT601860				-			
54	<i>D. aubei sanfilippoi</i>	IBE-DV209	France	Languedoc-Roussillon, Pyrenees Orientales department, Prats de Mollo	FRAO1	ca. 42°26'36"N 2°27'41"E	H. Fery		LT602131	LT601861	LT602527		LT602352	LT602435	LT602613	YES	A
55	<i>D. aubei sanfilippoi</i>	IBE-DV210	France	Languedoc-Roussillon, Pyrenees Orientales department, Prats de Mollo	FRAO1	ca. 42°26'36"N 2°27'41"E	H. Fery		LT602132	LT601862				-			
56	<i>D. aubei sanfilippoi</i>	IBE-DV211	France	Languedoc-Roussillon, Pyrenees Orientales department, Prats de Mollo	FRAO1	ca. 42°26'36"N 2°27'41"E	H. Fery		LT602133	LT601863				-			
57	<i>D. aubei sanfilippoi</i>	IBE-DV212	France	Languedoc-Roussillon, Pyrenees Orientales department, Prats de Mollo	FRAO1	ca. 42°26'36"N 2°27'41"E	H. Fery		LT602134	LT601864				-			
58	<i>D. aubei sanfilippoi</i>	IBE-DV261	France	Languedoc-Roussillon, Pyrenees Orientales department, Prats de Mollo	FRAO1	ca. 42°26'36"N 2°27'41"E	H. Fery		LT602135	LT601865				-			
59	<i>D. aubei sanfilippoi</i>	NHM-ER38	France	Languedoc-Roussillon, Pyrenees Orientales department, Prats de Mollo	FRAO1	ca. 42°26'36"N 2°27'41"E	H. Fery				LT602528			-			
60	<i>D. aubei sanfilippoi</i>	NHM-ER41	Spain	Castilla y León, León province, Puerto de San Glorío	ESPNN03	ca. 43°3'57"N 4°45'31"W	D.T. Bilton				LT602529			-			
61	<i>D. aubei spp.</i>	IBE-DV57	France	Languedoc-Roussillon, Gard province, Le Vigan	FRAO2	44°02'14.7"N 3°34'56.8"E	I. Ribera & A. Cieslak		LT602136	LT601868				-			
62	<i>D. aubei spp.</i>	IBE-DV58	France	Languedoc-Roussillon, Gard province, Le Vigan	FRAO2	44°02'14.7"N 3°34'56.8"E	I. Ribera & A. Cieslak		LT602137	LT601869				-			
63	<i>D. aubei spp.</i>	IBE-DV140	France	Auvergne, Cantal department, Vedrines-St. Loup	FRAO3	45°4'0.5"N 3°18'24.6"E	I. Ribera & A. Cieslak				LT602530		LT602353		-		
64	<i>D. aubei spp.</i>	IBE-DV141	France	Auvergne, Cantal department, Vedrines-St. Loup	FRAO3	45°4'0.5"N 3°18'24.6"E	I. Ribera & A. Cieslak		LT602139	LT601871	LT602531		LT602354	LT602436	LT602614	YES	B

65	<i>D. aubei</i> spp.	IBE-DV148	France	Languedoc-Roussillon, Gard province, Le Vigan	FRA02	44°02'14.7"N 3°34'56.8"E	I. Ribera & A. Cieslak	LT602140	LT601872									-	
66	<i>D. aubei</i> spp.	IBE-DV149	France	Languedoc-Roussillon, Gard province, Le Vigan	FRA02	44°02'14.7"N 3°34'56.8"E	I. Ribera & A. Cieslak	LT602141	LT601873	LT602532	LT602355	LT602437						-	
67	<i>D. aubei</i> spp.	IBE-DV160	France	Auvergne, Cantal department, Laveissière	FRA04	45°6'55.3"N 2°48'47.4"E	I. Ribera & A. Cieslak	LT602142	LT601874	LT602533	LT602356	LT602438	LT602615	YES				B	
68	<i>D. aubei</i> spp.	IBE-DV161	France	Auvergne, Cantal department, Laveissière	FRA04	45°6'55.3"N 2°48'47.4"E	I. Ribera & A. Cieslak	LT602143	LT601875									-	
69	<i>D. aubei</i> spp.	IBE-DV162	France	Auvergne, Cantal department, Laveissière	FRA04	45°6'55.3"N 2°48'47.4"E	I. Ribera & A. Cieslak	LT602144	LT601876									-	
70	<i>D. aubei</i> spp.	IBE-DV163	France	Auvergne, Cantal department, Laveissière	FRA04	45°6'55.3"N 2°48'47.4"E	I. Ribera & A. Cieslak	LT602145	LT601877									-	
71	<i>D. aubei</i> spp.	IBE-DV164	France	Auvergne, Cantal department, Laveissière	FRA04	45°6'55.3"N 2°48'47.4"E	I. Ribera & A. Cieslak	LT602146	LT601878									-	
72	<i>D. aubei</i> spp.	IBE-DV172	France	Auvergne, Cantal department, Vedrines-St. Loup	FRA03	45°40.5'N 3°18'24.6"E	I. Ribera & A. Cieslak	LT602147	LT601879									-	
73	<i>D. aubei</i> spp.	IBE-DV173	France	Auvergne, Cantal department, Vedrines-St. Loup	FRA03	45°40.5'N 3°18'24.6"E	I. Ribera & A. Cieslak	LT602148	LT601880									-	
74	<i>D. aubei</i> spp.	IBE-RA122	France	Languedoc-Roussillon, Gard province, Le Vigan	FRA02	44°02'14.7"N 3°34'56.8"E	I. Ribera & A. Cieslak	LT602149	LT601881	LT602534	LT602357	LT602439		YES				undetermined	
75	<i>D. brannanii</i>	IBE-DV38	Spain (Mallorca)	Ternelles	IMALL1	39°53'37.2"N 3°00'14.9"E	I. Ribera & A. Cieslak	LT602150	LT601882									-	
76	<i>D. brannanii</i>	IBE-DV39	Spain (Mallorca)	Ternelles	IMALL1	39°53'37.2"N 3°00'14.9"E	I. Ribera & A. Cieslak	LT602151	LT601883									-	
77	<i>D. brannanii</i>	IBE-DV40	Spain (Mallorca)	Sóller	IMALL2	39°45'45.7"N 2°42'39.3"E	I. Ribera & A. Cieslak	LT602152	LT601884	LT602535	LT602358	LT602440					NO		
78	<i>D. brannanii</i>	IBE-DV74	Spain (Mallorca)	Sóller	IMALL3	ca. 39°46'11"N 2°43'60"E	G. Wewalka	LT602153	LT601885	LT602536	LT602359	LT602441					-		
79	<i>D. brannanii</i>	IBE-DV75	Spain (Mallorca)	Sóller	IMALL3	ca. 39°46'11"N 2°43'60"E	G. Wewalka	LT602154	LT601886									-	
80	<i>D. brannanii</i>	IBE-DV76	Spain (Mallorca)	Sóller	IMALL3	ca. 39°46'11"N 2°43'60"E	G. Wewalka	LT602155	LT601887									-	
81	<i>D. brannanii</i>	IBE-DV120	Spain (Mallorca)	Ternelles	IMALL1	39°53'37.2"N 3°00'14.9"E	I. Ribera & A. Cieslak	LT602156	LT601888									-	
82	<i>D. brannanii</i>	IBE-DV121	Spain (Mallorca)	Ternelles	IMALL1	39°53'37.2"N 3°00'14.9"E	I. Ribera & A. Cieslak	LT602157	LT601889									-	
83	<i>D. brannanii</i>	IBE-RA313	Spain (Mallorca)	Sóller	IMALL3	ca. 39°46'11"N 2°43'60"E	G. Wewalka	LT602158	LT601890									-	
84	<i>D. brannanii</i>	IBE-RA314	Spain (Mallorca)	Sóller	IMALL3	ca. 39°46'11"N 2°43'60"E	G. Wewalka	LT602159	LT601891									-	
85	<i>D. brannanii</i>	MNCN-AI178	Spain (Mallorca)	Ternelles	IMALL1	39°53'37.2"N 3°00'14.9"E	I. Ribera & A. Cieslak	LN995094	HE610180	HF931404	LN995133	LT602442		NO					
86	<i>D. brannanii</i>	MNCN-AI296	Spain (Mallorca)	Sóller	IMALL2	39°45'45.7"N 2°42'39.3"E	I. Ribera & A. Cieslak	LT602160	LT601892									-	
87	<i>D. costipennis costipennis</i>	IBE-DV155	Portugal	Guarda district, Gouveia	PORCN8	40°29'49"N 7°35'56"W	J. Fresneda	LT602161	LT601893	LT602537	LT602360	LT602443					-		
88	<i>D. costipennis costipennis</i>	IBE-DV156	Portugal	Guarda district, Gouveia	PORCN8	40°29'49"N 7°35'56"W	J. Fresneda	LT602162	LT601894									-	
89	<i>D. costipennis costipennis</i>	IBE-DV157	Portugal	Guarda district, Gouveia	PORCN8	40°29'49"N 7°35'56"W	J. Fresneda	LT602163	LT601895									-	
90	<i>D. costipennis costipennis</i>	IBE-DV158	Portugal	Guarda district, Gouveia	PORCN8	40°29'49"N 7°35'56"W	J. Fresneda	LT602164	LT601896									-	
91	<i>D. costipennis costipennis</i>	IBE-DV204	Portugal	Guarda district, Gouveia	PORCN8	40°29'49"N 7°35'56"W	J. Fresneda	LT602165	LT601897									-	
92	<i>D. costipennis costipennis</i>	MNCN-AI183	Portugal	Guarda district, Manteigas (Serra da Estrela)	PORCN1	ca. 40°19'57"N 7°37'03"W	I. Ribera	LN995095	HE610181		LN995169	LN995134	LT602444					-	
93	<i>D. costipennis gignouxii</i>	IBE-DV19	Spain	Castilla y León, León province, Valverdin	ESPNNO13	ca. 42°56'53"N 5°32'10"W	L.F. Valladares	LN995096	LN995068		LN995170	LN995135	LT602445		NO				
94	<i>D. costipennis gignouxii</i>	NHM-ER40	Spain	Castilla y León, León province, Puerto de San Glorio	ESPNNO3	ca. 43°3'57"N 4°45'31"W	D.T. Bitton		AF309324		AY250951							-	
95	<i>D. delarouzei</i>	IBE-AF85	Spain	Aragón, Huesca province, Valle de Plan	ESPP1R1	ca. 42°34'39"N 0°20'7"E	I. Esteban		LT601898									-	
96	<i>D. delarouzei</i>	IBE-DV1	Spain	Cataluña, Barcelona province, Bagà	ESPP1R10	42°16'05.3"N 1°48'46.1"E	I. Ribera, P. Aguilera & C. Hernando	LT602166	LT601899	LT602538	LT602361							-	
97	<i>D. delarouzei</i>	IBE-DV2	Spain	Cataluña, Barcelona province, Bagà	ESPP1R10	42°16'05.3"N 1°48'46.1"E	I. Ribera, P. Aguilera & C. Hernando	LT602167	LT601900									-	
98	<i>D. delarouzei</i>	IBE-DV3	Spain	Cataluña, Lleida province, Llesp	ESPP1R12	42°27'24.5"N 0°44'57"E	I. Ribera, A. Cieslak & J. Fresneda	LT602168	LT601901	LT602539								-	
99	<i>D. delarouzei</i>	IBE-DV4	Spain	Cataluña, Lleida province, Llesp	ESPP1R12	42°27'24.5"N 0°44'57"E	I. Ribera, A. Cieslak & J. Fresneda	LT602169	LT601902									-	
100	<i>D. delarouzei</i>	IBE-DV5	Spain	Aragón, Huesca province, Bonansa	ESPP1R13	42°25'26.3"N 0°41'17.6"E	I. Ribera & A. Cieslak	LT602170	LT601903	LT602540	LT602362							-	
101	<i>D. delarouzei</i>	IBE-DV98	Spain	Aragón, Huesca province, Aragües del Puerto	ESPP1R7	42°45'16.93"N 0°37'59.65"W	I. Esteban	LT602171	LT601904	LT602541	LT602363	LT602446	LT602616	YES				A	
102	<i>D. delarouzei</i>	IBE-DV105	Spain	Cataluña, Lleida province, Llesp	ESPP1R12	42°27'24.5"N 0°44'57"E	I. Ribera, A. Cieslak & J. Fresneda	LT602172	LT601905									-	
103	<i>D. delarouzei</i>	IBE-DV106	Spain	Cataluña, Lleida province, Llesp	ESPP1R12	42°27'24.5"N 0°44'57"E	I. Ribera, A. Cieslak & J. Fresneda	LT602173	LT601906									-	
104	<i>D. delarouzei</i>	IBE-DV107	Spain	Cataluña, Lleida province, Llesp	ESPP1R12	42°27'24.5"N 0°44'57"E	I. Ribera, A. Cieslak & J. Fresneda	LT602174	LT601907	LT602542	LT602364	LT602447	LT602617	YES				A	
105	<i>D. delarouzei</i>	IBE-DV135	Spain	Cataluña, Girona province, Collada de Tosas	ESPP1R15	42°20'07.8"N 2°04'22.8"E	I. Ribera & A. Cieslak	LT602175	LT601908	LT602543	LT602365	LT602448					-		
106	<i>D. delarouzei</i>	IBE-DV159	Spain	Cataluña, Lleida province, Rubió	ESPP1R20	42°22'42"N 1°13'27"E	I. Ribera & A. Cieslak	LT602176	LT601909	LT602544	LT602366	LT602449	LT602618	YES				A	
107	<i>D. delarouzei</i>	IBE-DV175	Spain	Aragón, Huesca province, Santa Cruz de Serós	ESPP1R21	42°31'5.2"N 0°41'36.8"W	I. Ribera & A. Cieslak	LT602177	LT601910	LT602545	LT602367	LT602450					-		
108	<i>D. delarouzei</i>	IBE-DV176	Spain	Aragón, Huesca province, Santa Cruz de Serós	ESPP1R21	42°31'5.2"N 0°41'36.8"W	I. Ribera & A. Cieslak	LT602177	LT601911									-	
109	<i>D. delarouzei</i>	IBE-DV177	Spain	Aragón, Huesca province, Santa Cruz de Serós	ESPP1R21	42°31'5.2"N 0°41'36.8"W	I. Ribera & A. Cieslak	LT602178	LT601912									-	
110	<i>D. delarouzei</i>	IBE-DV191	Spain	Aragón, Huesca province, Santa Cruz de Serós	ESPP1R21	42°31'5.2"N 0°41'36.8"W	I. Ribera & A. Cieslak	LT602179	LT601913									-	
111	<i>D. delarouzei</i>	IBE-DV192	Spain	Aragón, Huesca province, Santa Cruz de Serós	ESPP1R21	42°31'5.2"N 0°41'36.8"W	I. Ribera & A. Cieslak	LT602180	LT601914									-	
112	<i>D. delarouzei</i>	IBE-DV201	Spain	Aragón, Huesca province, Astún	ESPP1R18	ca. 42°48'27"N 0°30'47"W	I. Esteban	LT602181	LT601915	LT602546	LT602368	LT602451					-		
113	<i>D. delarouzei</i>	IBE-DV202	Spain	Aragón, Huesca province, Astún	ESPP1R18	ca. 42°48'27"N 0°30'47"W	I. Esteban	LT602182	LT601916									-	
114	<i>D. delarouzei</i>	IBE-RA337	Spain	Aragón, Huesca province, Aragües del Puerto	ESPP1R7	42°45'16.93"N 0°37'59.65"W	I. Esteban	LN995097	LN995069		LN995171	LN995136	LT602452					-	
115	<i>D. delarouzei</i>	MNCN-AI071	Spain	Cataluña, Barcelona province, Montseny	ESPP1R2	41°45'23.5"N 2°24'49.8"E	I. Ribera, P. Aguilera & C. Hernando	LT602183	LT601917	LT602547	LT602369	LT602453	LT602619	YES				A	
116	<i>D. delarouzei</i>	NHM-ER37	Spain	Cataluña, Lleida province, Llesp	ESPP1R3	ca. 42°27'24"N 0°44'57"E	H. Fery		LT601918	LT602548								-	
117	<i>D. delarouzei</i>	NHM-IR78	Spain	Cataluña, Barcelona province, Saldes	ESPP1R4	ca. 42°13'37"N 1°44'32"E	P. Aguilera		LT601919	LT602549								-	
118	<i>D. latus</i>	IBE-DV17	Scotland	Isle of Skye, Broadford river	SCO1	ca. 57°13'57"N 5°56'22"W	G.N. Foster	LT602184	LT601920	LT602550								-	
119	<i>D. latus</i>	IBE-DV18	Scotland	Isle of Skye, Broadford river	SCO1	ca. 57°13'57"N 5°56'22"W	G.N. Foster	LT602185	LT601921									-	
120	<i>D. latus</i>	IBE-DV45	Bulgaria	Kyustendil province, Rila	BUL3	ca. 42°7'55"N 23°8'40"E	D.T. Bitton	LT602186	LT601922	LT602551	LT602370	LT602454					-		
121	<i>D. latus</i>	IBE-DV46	Bulgaria	Kyustendil province, Rila	BUL3	ca. 42°7'55"N 23°8'40"E	D.T. Bitton	LT602187	LT601923									-	
122	<i>D. latus</i>	IBE-DV77	Croatia	Istria county, Momjan	CRO2	45°26'30.8"N 13°42'37.8"E	I. Ribera & A. Cieslak	LT602188	LT601924	LT602552	LT602371	LT602455					-		
123	<i>D. latus</i>	IBE-DV78	Croatia	Istria county, Momjan	CRO2	45°26'30.8"N 13°42'37.8"E	I. Ribera & A. Cieslak	LT602189	LT601925									-	
124	<i>D. latus</i>	IBE-DV80	Slovenia	Carniola, Cerkljanska	ESL2	45°45'57.5"N 14°21'40.0"E	I. Ribera & A. Cieslak	LT602190	LT601926	LT602553	LT602372	LT602456					NO		
125	<i>D. latus</i>	IBE-DV81	Slovenia	Carniola, Cerkljanska	ESL2	45°45'57.5"N 14°21'40.0"E	I. Ribera & A. Cieslak	LT602191	LT601927									-	
126	<i>D. latus</i>	IBE-DV82	Slovenia	Carniola, Cerkljanska	ESL2	45°45'57.5"N 14°21'40.0"E	I. Ribera & A. Cieslak	LT602192	LT601928									-	
127	<i>D. latus</i>	IBE-DV112	Scotland	Isle of Skye, Broadford river	SCO1	ca. 57°13'57"N 5°56'22"W	G.N. Foster	LT602193	LT601929	LT602554	LT602373	LT602457					NO		
128	<i>D. latus</i>	IBE-DV113	Scotland	Isle of Skye, Broadford river	SCO1	ca. 57°13'57"N 5°56'22"W	G.N. Foster	LT602194	LT601930									-	
129	<i>D. latus</i>	IBE-DV168	Croatia	Istria county, Momjan	CRO2	45°26'30.8"N 13°42'37.8"E	I. Ribera & A. Cieslak	LT602195	LT601931									-	
130	<i>D. latus</i>	IBE-DV169	Croatia	Istria county, Momjan	CRO2	45°26'30.8"N 13°42'37.8"E	I. Ribera & A. Cieslak	LT602196	LT601932									-	
131	<i>D. latus</i>	IBE-DV182	Germany	Rheinland-Pfalz, river Flaunbach	ALE6	50°8'59.5"N 7°16'35.0"E	I. Ribera & A. Cieslak	LT602196	LT601933	LT602555	LT602374	LT602458					-		
132	<i>D. latus</i>	IBE-DV183	Germany	Rheinland-Pfalz, river Flaunbach	ALE6	50°8'59.5"N 7°16'35.0"E	I. Ribera & A. Cieslak	LT602197	LT601934									-	
133	<i>D. latus</i>	IBE-DV184	Germany	Rheinland															

207	<i>D. moestus inconspectus</i>	MNCN-AC37	Italy (Sicily)	Mesina province, Cesaro-Randazzo	ISIC2	ca. 37°49'60"N 14°47'37"E	P. Abellán & F. Picazo			LT602006		LT602578						-		
208	<i>D. moestus inconspectus</i>	MNCN-AH182	Italy (Sicily)	Catania province, Parco dei Nebrodi, river Flascio	ISIC5	ca. 37°54'13"N 14°52'52"E	P. Abellán & F. Picazo			LT602265	LT602007							-		
209	<i>D. moestus inconspectus</i>	MNCN-AI672	Bulgaria	Blagoevgrad province, Filipovo (Rhodope Mountains)	BUL1	ca. 41°45'53"N 23°41'22"E	D.T. Bilton	LN995108	LN995076		LN995146	LT602482						-		
210	<i>D. moestus inconspectus</i>	MNCN-AI894	Spain	Andalucía, Jaén province, Hornos del Segura	ESPSUR2	ca. 38°14'6"N 2°43'42"W	A.G. Valdecasas			LT602266	LT602579	LT602396	LT602483					NO		
211	<i>D. moestus inconspectus</i>	MNCN-AI937	Morocco	Sus-Masa-Draa, Ouarzazate province, Tachokchte	MARATL1	ca. 30°47'36"N 7°31'27"W	I. Ribera & A. Cieslak	LN995109	LN995077		LN995181	LT602484						NO		
212	<i>D. moestus inconspectus</i>	MNCN-AI1048	Italy	Veneto, Treviso province, Collalto	ITAN2	45°52'20.3"N 12°11'17.3"E	I. Ribera & A. Cieslak			LT602267	LT602009	LT602580	LT602397	LT602485	LT602629			YES	A	
213	<i>D. moestus inconspectus</i>	MNCN-AI1090	Spain	Andalucía, Jaén province, Sierra de Cazorla	ESPSUR14	ca. 38°6'9"N 2°48'46"W	A. Castro			LT602268	LT602010							-		
214	<i>D. moestus inconspectus</i>	MNCN-AI1202	Greece	Epirus region, Kipoi	GRE1	39°51'42.2"N 20°47'10.4"E	P. & V. Ponel			LT602269	LT602011							-		
215	<i>D. moestus inconspectus</i>	MNCN-AI1218	Greece	Peloponnese, Laconia region, Mistras	GRE2	ca. 37°4'25"N 22°22'27"E	G. Wewalka			LT602270	LT602012							-		
216	<i>D. moestus inconspectus</i>	NHM-IR82	Spain	Cataluña, Barcelona province, Saldes	ESPPIR4	ca. 42°13'37"N 1°44'32"E	P. Aguilera				LT602013	LT602581						-		
217	<i>D. moestus inconspectus</i>	NHM-IR207	Spain	Castilla La Mancha, Albacete province, river Endrinales	ESPSUR5	ca. 38°33'31"N 2°20'35"W	I. Ribera				LT602014							-		
218	<i>D. moestus inconspectus</i>	NHM-IR235	Morocco	Sus-Masa-Draa, Chtouka Ait Baha province, Ait-Ifitene	MARATL4	ca. 30°4'10"N 9°9'26"W	I. Ribera				LT602015	LT602582						-		
219	<i>D. moestus inconspectus</i>	NHM-IR303	Italy	Lombardia, Pavia province, San Ponzo	ITAN4	ca. 44°50'23"N 9°6'23"E	I. Ribera & A. Cieslak				LT602016	LT602583						-		
220	<i>D. moestus moestus</i>	IBE-DV41	Italy (Sardinia)	Ogliastra province, Codula di Luna	ICER1	40°10'16.0"N 9°33'36.7"E	P. & V. Ponel			LT602271	LT602017	LT602584	LT602398	LT602486			YES	undetermined		
221	<i>D. moestus moestus</i>	IBE-DV42	Italy (Sardinia)	Ogliastra province, Codula di Luna	ICER1	40°10'16.0"N 9°33'36.7"E	P. & V. Ponel			LT602272	LT602018							-		
222	<i>D. moestus moestus</i>	IBE-DV66	Italy (Sardinia)	Ogliastra province, Villagrande Strisaili	ICER2	39°57'3.17"N 9°31'8.25"E	H. Fery & M. Toledo			LT602273	LT602019	LT602585	LT602399	LT602487				-		
223	<i>D. moestus moestus</i>	IBE-DV69	Italy (Sardinia)	Olbia-Tempio province, Monte Limbara	ICER3	40°51'30.18"N 9°7'20.81"E	H. Fery & M. Toledo	LN995110	LN995078		LN995148	LT602488						-		
224	<i>D. moestus moestus</i>	IBE-DV70	Italy (Sardinia)	Olbia-Tempio province, Monte Limbara	ICER3	40°51'30.18"N 9°7'20.81"E	H. Fery & M. Toledo			LT602274	LT602020							-		
225	<i>D. moestus moestus</i>	IBE-DV71	Italy (Sardinia)	Olbia-Tempio province, Monte Limbara	ICER3	40°51'30.18"N 9°7'20.81"E	H. Fery & M. Toledo			LT602275	LT602021							-		
226	<i>D. moestus moestus</i>	IBE-DV72	Italy (Sardinia)	Ogliastra province, Tortoli	ICER4	ca. 39°56'23"N 9°35'34"E	H. Fery & M. Toledo			LT602276	LT602022	LT602586	LT602400	LT602489				-	undetermined	
227	<i>D. moestus moestus</i>	IBE-DV73	Italy (Sardinia)	Ogliastra province, Tortoli	ICER4	ca. 39°56'23"N 9°35'34"E	H. Fery & M. Toledo			LT602277	LT602023							-		
228	<i>D. moestus moestus</i>	IBE-DV122	Italy (Sardinia)	Ogliastra province, Codula di Luna	ICER1	40°10'16.0"N 9°33'36.7"E	P. & V. Ponel			LT602278	LT602024							-		
229	<i>D. moestus moestus</i>	IBE-DV123	Italy (Sardinia)	Ogliastra province, Codula di Luna	ICER1	40°10'16.0"N 9°33'36.7"E	P. & V. Ponel			LT602279	LT602025							-		
230	<i>D. moestus moestus</i>	IBE-DV166	Italy (Sardinia)	Ogliastra province, Tortoli	ICER4	ca. 39°56'23"N 9°35'34"E	H. Fery & M. Toledo			LT602280	LT602026							-		
231	<i>D. moestus moestus</i>	IBE-DV167	Italy (Sardinia)	Ogliastra province, Tortoli	ICER4	ca. 39°56'23"N 9°35'34"E	H. Fery & M. Toledo			LT602281	LT602027							-		
232	<i>D. moestus moestus</i>	IBE-RA307	Italy (Sardinia)	Ogliastra province, Villagrande Strisaili	ICER2	39°57'3.17"N 9°31'8.25"E	H. Fery & M. Toledo				LT602028							-		
233	<i>D. moestus moestus</i>	IBE-RA310	Italy (Sardinia)	Olbia-Tempio province, Monte Limbara	ICER3	40°51'30.18"N 9°7'20.81"E	H. Fery & M. Toledo			LT602282	LT602029							-		
234	<i>D. moestus moestus</i>	IBE-RA311	Italy (Sardinia)	Ogliastra province, Tortoli	ICER4	ca. 39°56'23"N 9°35'34"E	H. Fery & M. Toledo			LT602283	LT602030							-		
235	<i>D. moestus moestus</i>	MNCN-AI886	Italy (Sardinia)	Ogliastra province, Codula di Luna	ICER1	40°10'16.0"N 9°33'36.7"E	P. & V. Ponel			LT602284	LT602031							-		
236	<i>D. moestus moestus</i>	NHM-IR156	France (Corsica)	Haute-Corse department, Vizzavona	ICOR1	ca. 42°6'59"N 9°6'40"E	I. Ribera & A. Cieslak	LN995105	AF309259									-		
237	<i>D. moestus moestus</i>	NHM-MsC00B	France (Corsica)	Corse-du-Sud department, L'Ospedale	ICOR3	ca. 41°39'14"N 9°12'41"E	I. Ribera & A. Cieslak				LT602032	LT602587						-		
238	<i>D. platynotus</i>	IBE-DV137	Germany	Bayern, Schwaben region, Wertach	ALE2	47°35'9.6"N 10°22'52.2"E	L. Hendrich & R. Müller			LT602285	LT602033	LT602588	LT602401	LT602490				NO		
239	<i>D. platynotus</i>	IBE-DV213	Romania	Bacău county, Scutaru	RUM1	ca. 46°3'54"N 26°31'48"E	H. Fery			LT602286	LT602034	LT602589	LT602402	LT602491				-		
240	<i>D. platynotus</i>	IBE-RA316	Montenegro	Savnik	MON2	ca. 42°57'28"N 19°5'54"E	D.T. Bilton			LT602287	LT602035	LT602590	LT602403	LT602492				-		
241	<i>D. platynotus</i>	IBE-RA332	Germany	Saxonia, Dresden region, Pöbelbach	ALE1	50°48'57.96"N 13°39'44.14"E	L. Hendrich & R. Müller			LT602288	LT602036	LT602591						-		
242	<i>D. platynotus</i>	IBE-RA335	Macedonia	Ohrid district, Recica	MAC2	ca. 41°11'52"N 20°55'47"E	D.T. Bilton			LT602289	LT602037	LT602592	LT602404	LT602493				NO		
243	<i>D. platynotus</i>	IBE-RA445	Bulgaria	Kyustendil province, Rila	BUL3	ca. 42°7'55"N 23°8'40"E	D.T. Bilton			LT602290	LT602038							-		
244	<i>D. platynotus</i>	IBE-RA446	Bulgaria	Kyustendil province, Rila	BUL3	ca. 42°7'55"N 23°8'40"E	D.T. Bilton			LT602291	LT602039							-		
245	<i>D. platynotus</i>	IBE-RA447	Czech Republic	Central Bohemia region, Rakovnik district, Skryje	RCHE1	ca. 49°58'21"N 13°45'55"E	J. Statzsny			LT602292	LT602040							-		
246	<i>D. platynotus</i>	IBE-RA448	Czech Republic	Central Bohemia region, Rakovnik district, Skryje	RCHE1	ca. 49°58'21"N 13°45'55"E	J. Statzsny			LT602293	LT602041							-		
247	<i>D. platynotus</i>	MNCN-AI1039	Bulgaria	Kyustendil province, Rila	BUL3	ca. 42°7'55"N 23°8'40"E	D.T. Bilton	LN995115	HE610190		LN995186	LN995154	LT602494					-		
248	<i>D. platynotus</i>	MNCN-AI1121	Macedonia	Bitola district, Pelister National Park, Golemo Ezero	MAC1	ca. 40°58'9"N 21°12'19"E	R. B. Angus			LT602294	LT602042	LT602593	LT602405	LT602495				-		
249	<i>D. platynotus</i>	MNCN-AI1122	Germany	Saxonia, Dresden region, Pöbelbach	ALE1	50°48'57.96"N 13°39'44.14"E	L. Hendrich & R. Müller	LN995116	HE610191		HF931361	LN995155	LT602496					-		
250	<i>D. platynotus</i>	MNCN-AI1123	Germany	Saxonia, Dresden region, Pöbelbach	ALE1	50°48'57.96"N 13°39'44.14"E	L. Hendrich & R. Müller			LT602295	LT602043							-		
251	<i>D. platynotus</i>	MNCN-AI1275	Czech Republic	Central Bohemia region, Rakovnik district, Skryje	RCHE1	ca. 49°58'21"N 13°45'55"E	J. Statzsny			LT602296	LT602044	LT602594	LT602406					-		
252	<i>D. platynotus</i>	NHM-IR246	Czech Republic	Central Bohemia region, Rakovnik district, Skryje	RCHE1	ca. 49°58'21"N 13°45'55"E	J. Statzsny					LT602595						-		
253	<i>D. semirufus</i>	IBE-AF94	Italy	Emilia-Romagna, Modena province, Fanano	ITAN1	ca. 44°9'58"N 10°43'55"E	M. Toledo				LT602045	LT602596	LT602407	LT602497				-		
254	<i>D. semirufus</i>	IBE-DV29	Italy (Sicily)	Mesina province, Parco dei Nebrodi, Caserma Mafauda	ISIC1	ca. 37°53'42"N 14°30'31"E	P. Abellán & F. Picazo			LT602297	LT602046							-		
255	<i>D. semirufus</i>	IBE-DV30	Italy (Sicily)	Mesina province, Parco dei Nebrodi, Caserma Mafauda	ISIC1	ca. 37°53'42"N 14°30'31"E	P. Abellán & F. Picazo			LT602298	LT602047							-		
256	<i>D. semirufus</i>	IBE-DV33	Italy	Emilia-Romagna, Modena province, Fanano	ITAN1	ca. 44°9'58"N 10°43'55"E	M. Toledo			LT602299	LT602048							-		
257	<i>D. semirufus</i>	IBE-DV34	Italy (Sicily)	Mesina province, Parco dei Nebrodi, river Torti	ISIC4	ca. 37°53'38"N 14°39'6"E	P. Abellán & F. Picazo			LT602300	LT602049	LT602597	LT602408	LT602498	LT602630			YES	A	
258	<i>D. semirufus</i>	IBE-DV35	Italy (Sicily)	Mesina province, Parco dei Nebrodi, river Torti	ISIC4	ca. 37°53'38"N 14°39'6"E	P. Abellán & F. Picazo			LT602301	LT602050							-		
259	<i>D. semirufus</i>	IBE-DV36	Italy (Sicily)	Mesina province, Parco dei Nebrodi, river Torti	ISIC4	ca. 37°53'38"N 14°39'6"E	P. Abellán & F. Picazo			LT602302	LT602051							-		
260	<i>D. semirufus</i>	IBE-DV51	France	Provence-Alpes-Cote D'azur, Alpes-Maritimes department, Monti	FRAE1	ca. 43°49'28"N 7°28'56"E	D.T. Bilton			LT602303	LT602052	LT602598	LT602409	LT602499				YES	undetermined	
261	<i>D. semirufus</i>	IBE-DV52	France	Provence-Alpes-Cote D'azur, Alpes-Maritimes department, Monti	FRAE1	ca. 43°49'28"N 7°28'56"E	D.T. Bilton			LT602304	LT602053							-		
262	<i>D. semirufus</i>	IBE-DV59	Italy	Marche, Ascoli-Piceno province, Acquasanta	ITACN1	ca. 42°43'29"N 13°22'58"E	M. Toledo			LT602305	LT602054	LT602599	LT602410	LT602500	LT602631			YES	A	
263	<i>D. semirufus</i>	IBE-DV88	Italy	Toscana, Arezzo province, Badia Prataglia	ITACN3	43°47'51"N 11°53'37"E	I. Ribera & A. Cieslak			LT602306	LT602055	LT602600	LT602411	LT602501				-		
264	<i>D. semirufus</i>	IBE-DV89	Italy	Toscana, Arezzo province, Badia Prataglia	ITACN3	43°47'51"N 11°53'37"E	I. Ribera & A. Cieslak			LT602307	LT602056							-		
265	<i>D. semirufus</i>	IBE-DV90	Italy	Toscana, Arezzo province, Badia Prataglia	ITACN3	43°47'51"N 11°53'37"E	I. Ribera & A. Cieslak			LT602308	LT602057							-		
266	<i>D. semirufus</i>	IBE-DV91	Italy	Toscana, Arezzo province, Fosso de Camaldoli	ITACN4	43°49'05"N 11°48'23"E	I. Ribera & A. Cieslak			LT602309	LT602058	LT602601						-		
267	<i>D. semirufus</i>	IBE-DV92	Italy	Toscana, Arezzo province, Fosso de Camaldoli	ITACN4	43°49'05"N 11°48'23"E	I. Ribera & A. Cieslak			LT602310	LT602059							-		
268	<i>D. semirufus</i>	IBE-DV93	Italy	Toscana, Arezzo province, Fosso de Camaldoli	ITACN4	43°49'05"N 11°48'23"E	I. Ribera & A. Cieslak			LT602311	LT602060	LT602602	LT602412	LT602502				YES	undetermined	
269	<i>D. semirufus</i>	IBE-DV99	Italy	Abruzzo, L'Aquila province, Pescasseroli (Abruzzo N.P)	ITACN6	41°51'4.72"N 13°46'37.24"E	I. Ribera & A. Cieslak			LT602312	LT602061	LT602603	LT602413	LT602503	LT602632			YES	B	
270	<i>D. semirufus</i>	IBE-DV100	Italy	Abruzzo, L'Aquila province, Pescasseroli (Abruzzo N.P)	ITACN6	41°51'4.72"N 13°46'37.24"E	I. Ribera & A. Cieslak				LT602313	LT602062							-	
271	<i>D. semirufus</i>	IBE-DV117	Italy (Sicily)	Mesina province, Parco dei Nebrodi, Caserma Mafauda	ISIC1	ca. 37°53'42"N 14°30'31"E	P. Abellán & F. Picazo			LT602314	LT602063	LT602604	LT602414	LT602504	LT602633			YES	A	
272	<i>D. semirufus</i>	IBE-DV130	France	Provence-Alpes-Cote D'azur, Alpes-Maritimes department, Monti	FRAE1	ca. 43°49'28"N 7°28'56"E	D.T. Bilton			LT602315	LT602064							-		
273	<i>D. semirufus</i>	IBE-DV131	France	Provence-Alpes-Cote D'azur, Alpes-Maritimes department, Monti	FRAE1	ca. 43°49'28"N 7°28'56"E	D.T. Bilton			LT602316	LT602065							-		
274																				

Table S2.

A) Primers used for the amplification and sequencing. In brackets, length of the amplified fragment.

gene	primer	sequence	ref.
cox1-3' (826)	Jerry (5')	CAACATTTATTTTGATTTTTTGG	(4)
	Pat (3')	TCCAATGCACTAATCTGCCATATTA	(4)
	Chy (5')	T(A/T)GTAGCCCA(T/C)TTTCATTA(T/C)GT	(3)
	Tom (3')	AC(A/G)TAATGAAA(A/G)TGGGCTAC(T/A)A	(3)
barcode (658)	LCO 1490 (5')	GGTCAACAAATCATAAAGATATTGG	(2)
	HCO 2198 (3')	TAAACTTCAGGGTGACCAAAAAATCA	(2)
rrnL+trnL+nad1 (685-693)	16SaR (5')	CGCCTGTTTAACAAAAACAT	(4)
	ND1 (3')	GGTCCCTTACGAATTTGAATATATCCT	(4)
H3 (330)	H3aF (5')	ATGGCTCGTACCAAGCAGACRCG	(1)
	H3aR (3')	ATATCCTTRGGCATRATRGTGAC	(1)
Wingless (472-475)	WG550F (5')	ATGCGTCAGGARTGYAARTGYCAYGGYATGTC	(5)
	WGAbrZ (3')	CACTNACYTCRCARCACCARTG	(5)

B) Standard PCR conditions for the amplification of the studied fragments.

step	time	temperature
1	3'	96°
2	30''	94°
3	30''-1'	47-50° *
4	1'	72°
5	Go to step 2 and repeat 34-40 x	
6	10'	72°

* Depending on the annealing temperatures of the primers pair used

References

1. Colgan, D. J., McLauchlan, A., Wilson, G. D. F., Livingston, S. P., Edgecombe, G. D., Macaranas, J., Cassis, G. & Gray, M. R. (1998). Histone H3 and U2 snRNA DNA sequences and arthropod molecular evolution. *Australian Journal of Zoology*, 46: 419-437.
2. Folmer, O., Black, M., Hoeh, W., Lutz, R. & Vrijenhoek, R. (1994). DNA primers for amplification of mitochondrial cytochrome c oxidase subunit I from diverse metazoan invertebrates. *Molecular Marine Biology and Biotechnology*, 3: 294-299.

3. Ribera, I., Fresneda, J., Bucur, R., Izquierdo, A., Vogler, A.P., Salgado, J.M. & Cieslak, A. (2010). Ancient origin of a Western Mediterranean radiation of subterranean beetles. *BMC Evolutionary Biology*, 10: 29.
4. Simon, C., Frati, F., Beckenbach, A., Crespi, B., Liu, H., & Flook, P. (1994). Evolution, weighting, and phylogenetic utility of mitochondrial gene sequences and a compilation of conserved polymerase chain reaction primers. *Annals of the entomological Society of America*, 87: 651-701.
5. Wild, A. L., & Maddison, D. R. (2008). Evaluating nuclear protein-coding genes for phylogenetic utility in beetles. *Molecular Phylogenetics and Evolution*, 48: 877-891.

Figure S1. Ultrametric time calibrated tree obtained with BEAST with the mitochondrial sequence data of the same specimens used in the analysis of the nuclear sequences (see Fig. S2). Numbers in nodes: Bayesian posterior probabilities. See Table S1 for details on the specimens and localities.

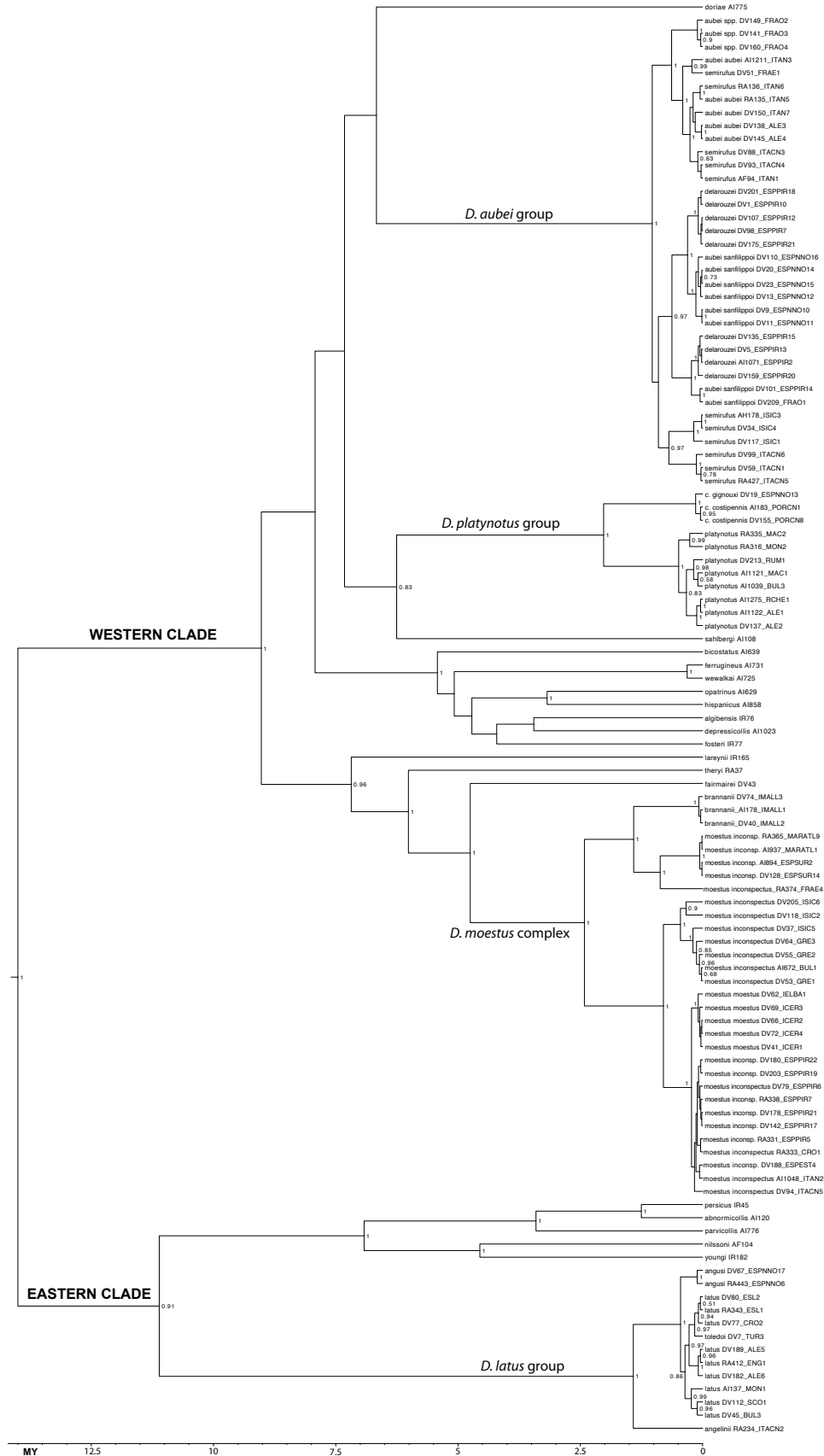


Figure S2. Ultrametric time calibrated tree obtained with BEAST using only the nuclear sequence data of the same specimens used in the analysis of the mitochondrial sequences (see Fig. S1). Numbers in nodes: Bayesian posterior probabilities. See Table S1 for details on the specimens and localities.

