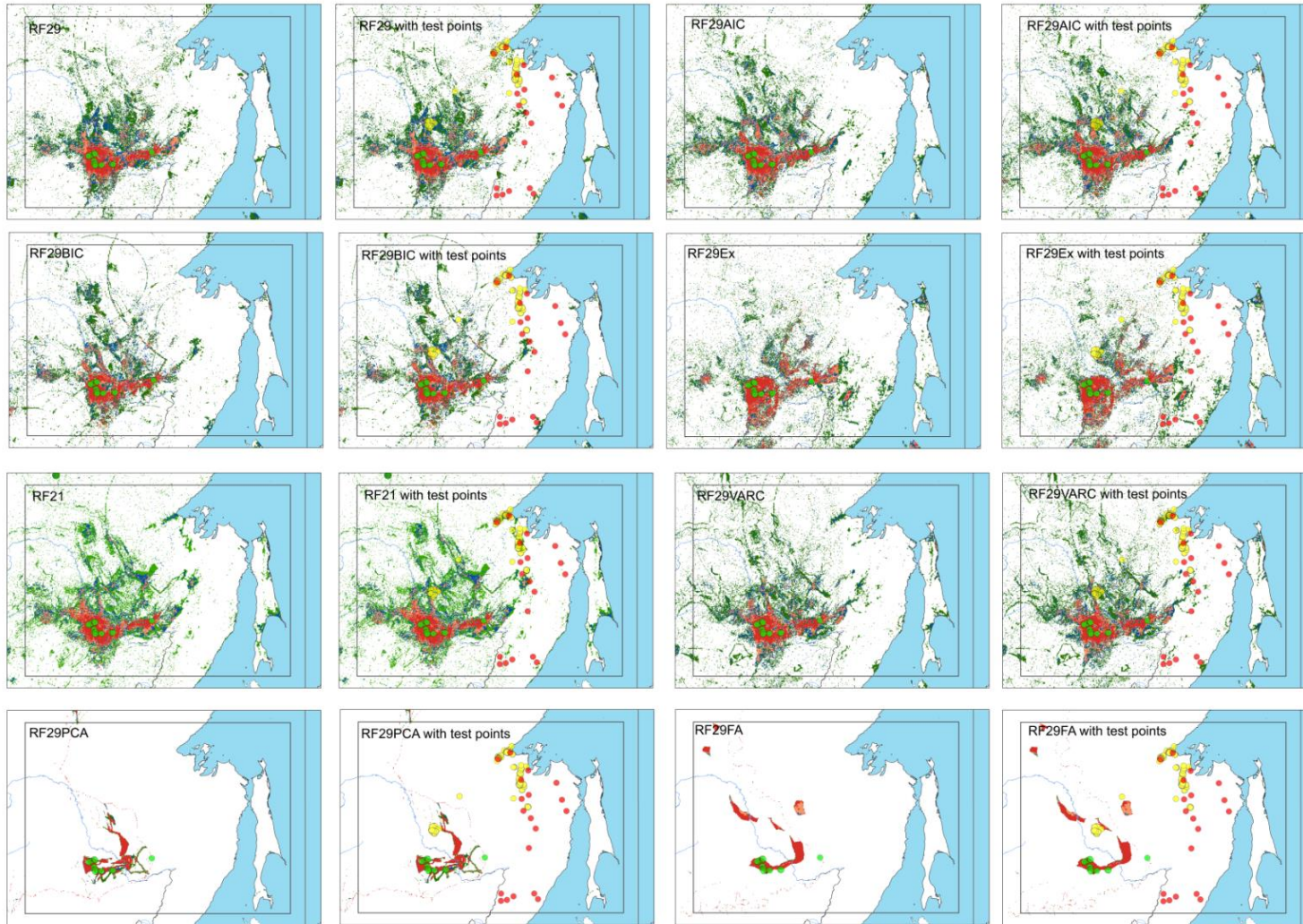
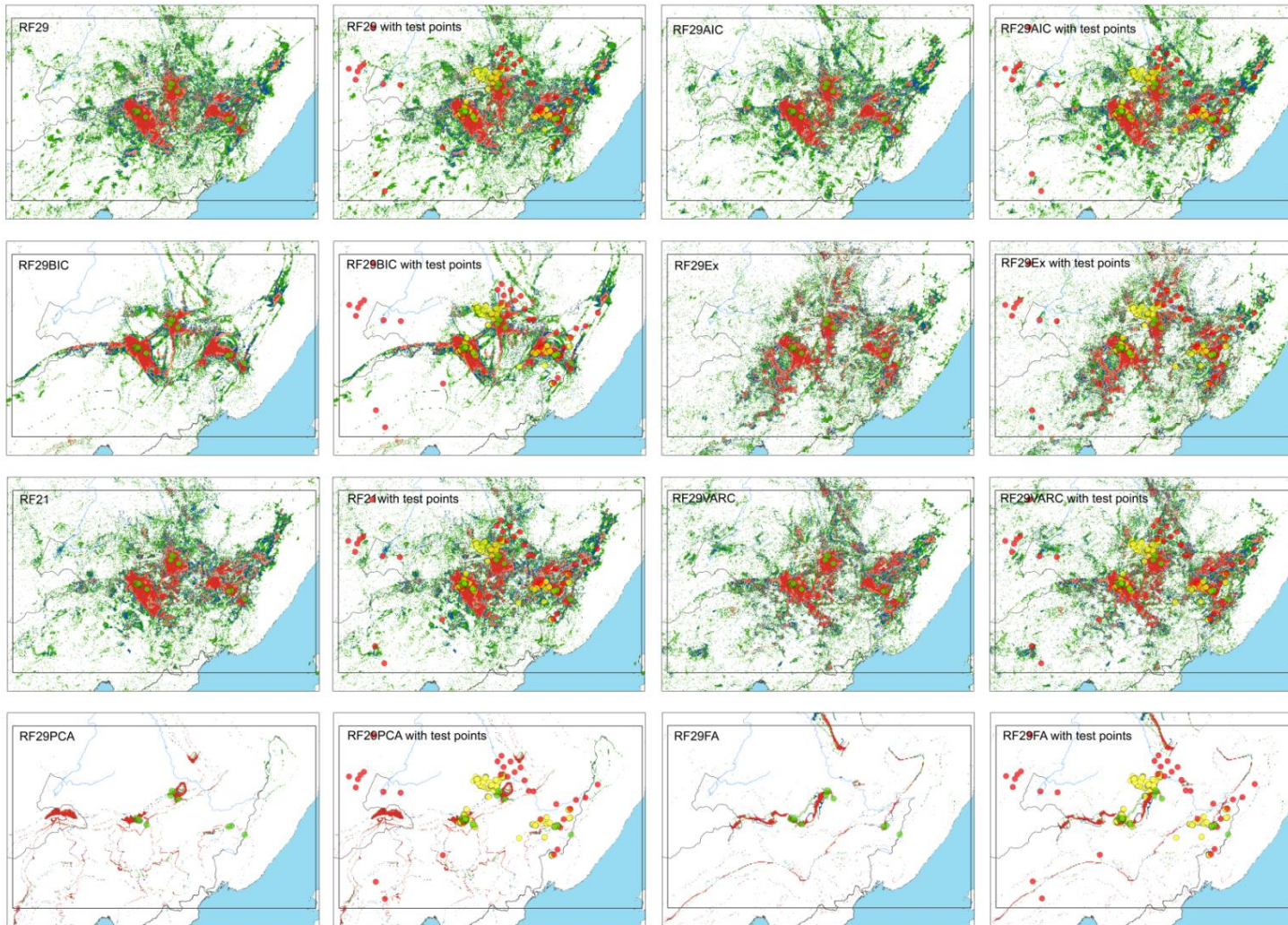


1 Supplement S2 Prediction of three crane species with different predictor groups

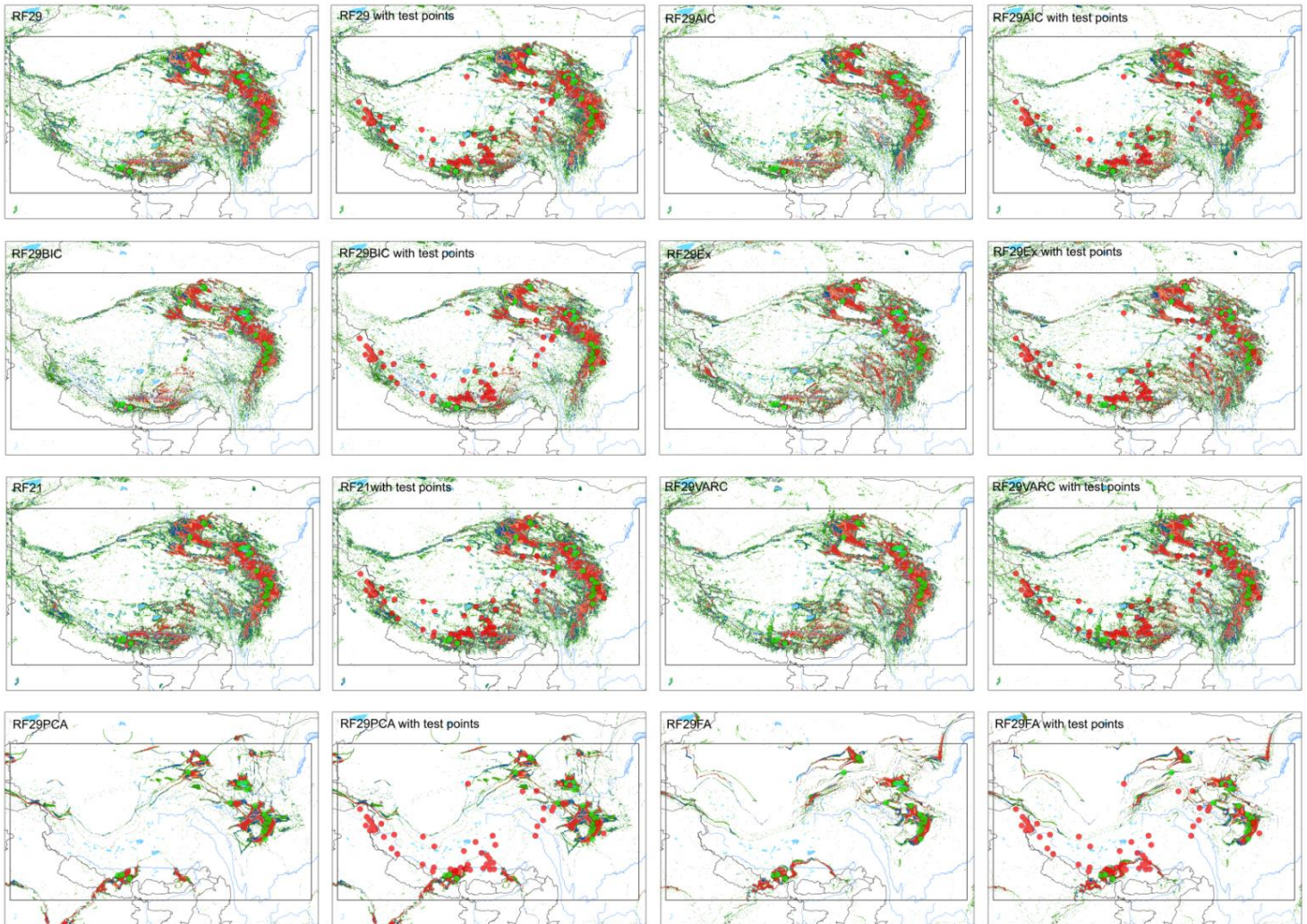


2
3 For Hooded Cranes, RF21 and RF29VARC are the best, RF21 a little bit better than RF29VARC. PCA and Factor Analysis(FA) are bad



1
 2 For White-naped Cranes, RF21 was in the first level group, PCA and Factor Analysis(FA) are bad.

3



1
2 For Black-necked Cranes, RF21 was in the first level group, PCA and Factor Analysis (FA) are bad

3
4