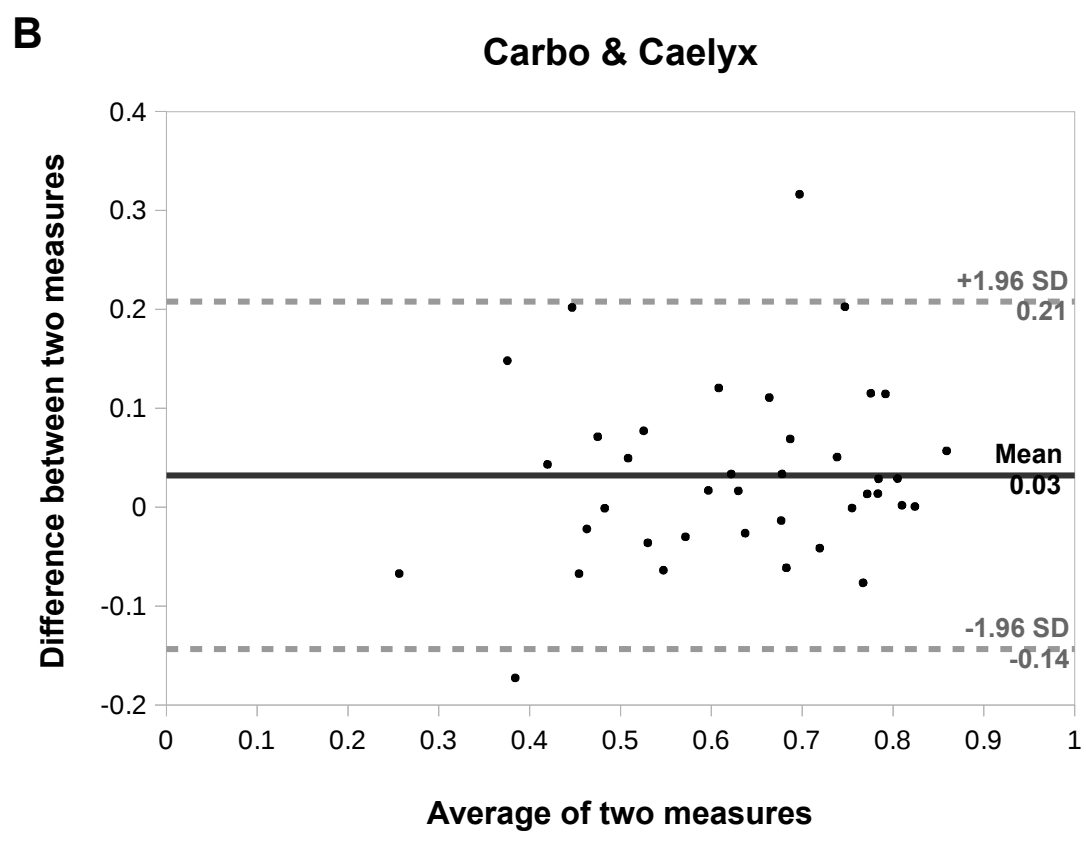
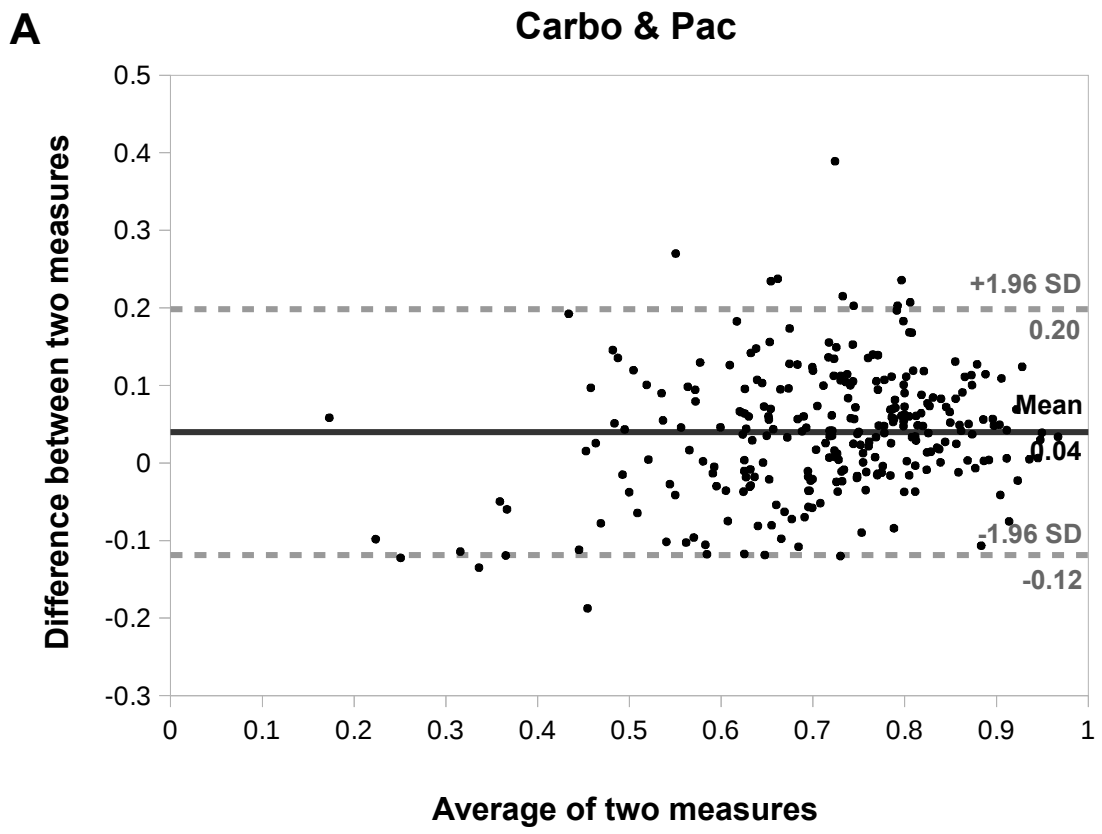


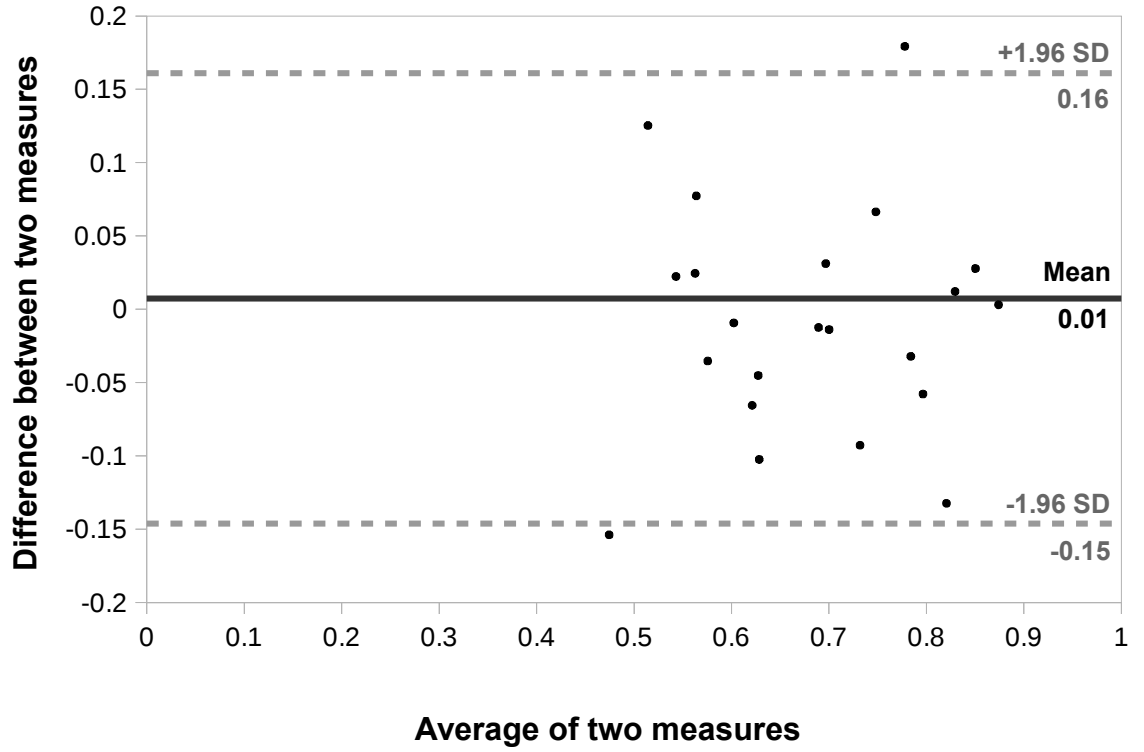
1
2
3
4
5
6
7
8
9
10
11
12
13
14
15
16
17
18
19
20
21
22
23
24
25



26
27
28
29
30
31
32
33
34
35
36
37
38
39
40
41
42
43
44
45
46
47
48
49
50

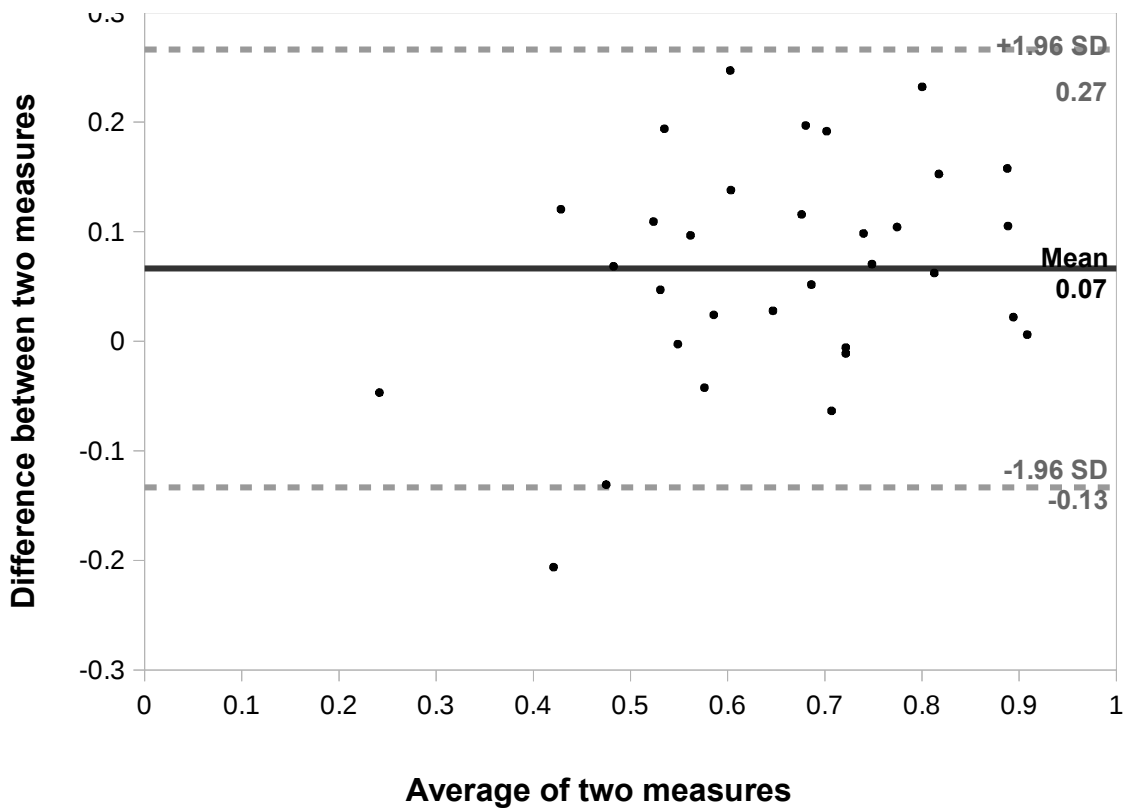
C

Carbo & Doxo



D

Carbo & Etop



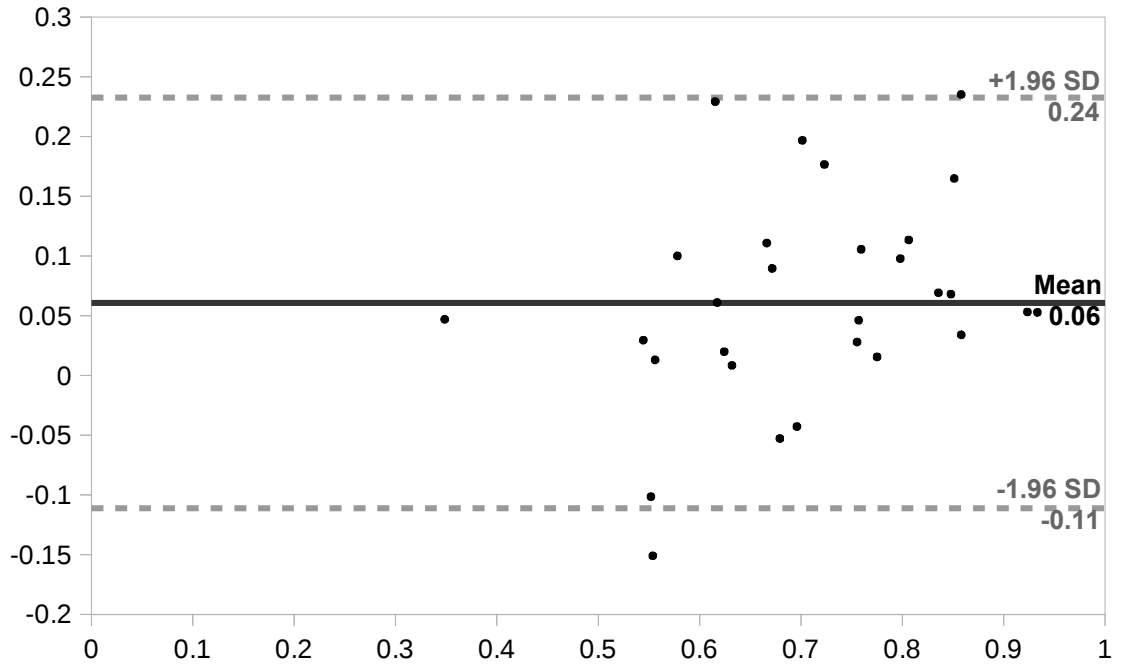
51

M

Carbo & Topo

52

53
54
55
56
57
58
59
60
61



62

Average of two measures

63

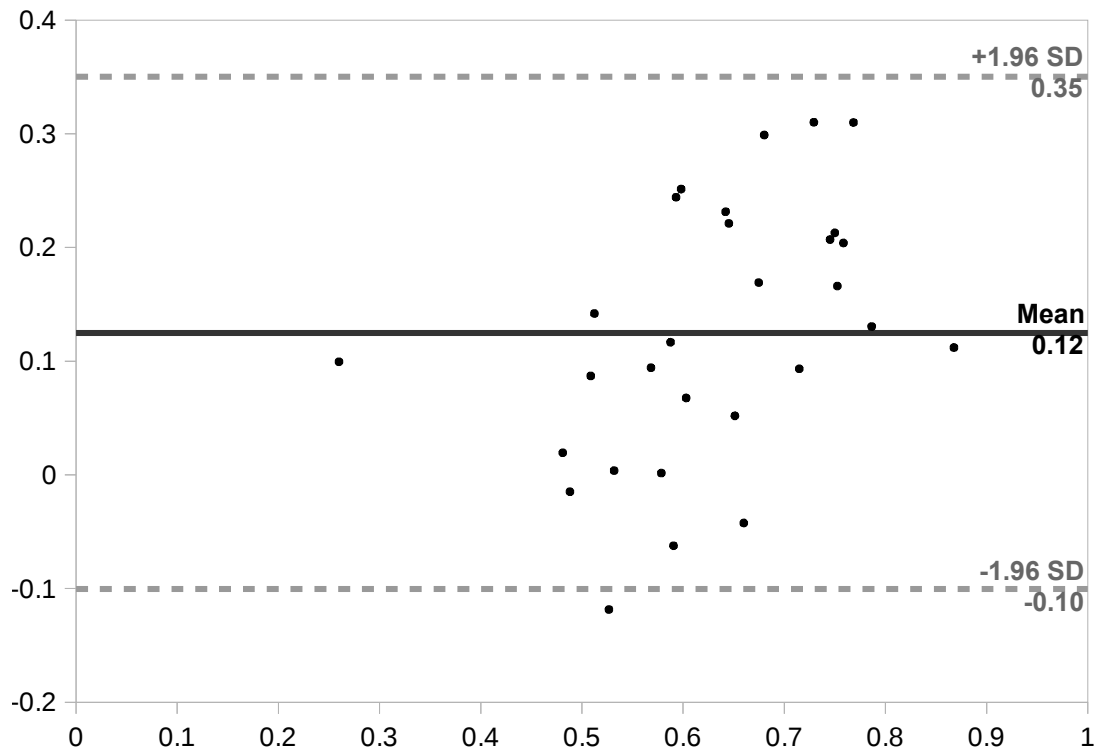
64

N

Carbo & Doce

66

67
68
69
70
71
72
73
74
75



Average of two measures

76

77

78

79

80

81

82

83

84

85

86

87

88

89

90

91

92

93

94

95

96

97

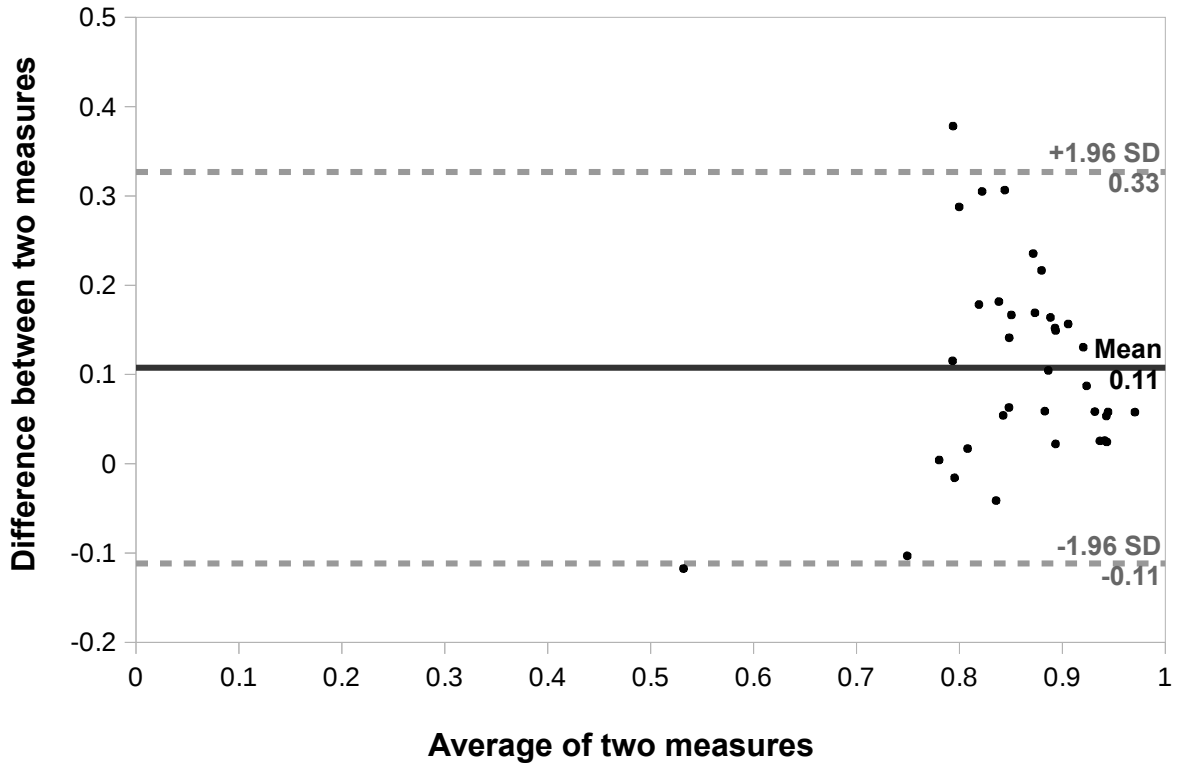
98

99

100

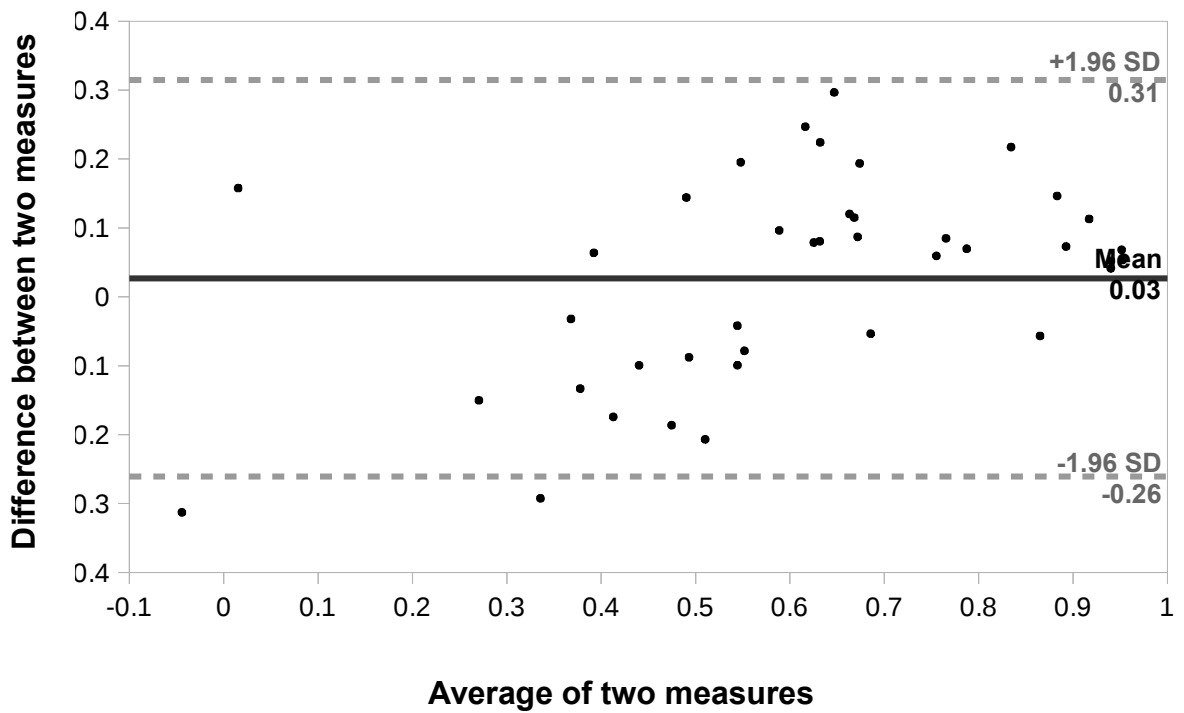
G

Carbo & Gem



H

5FU & SN38



101
102
103
104
105
106
107
108
109
110
111
112
113
114
115

I

