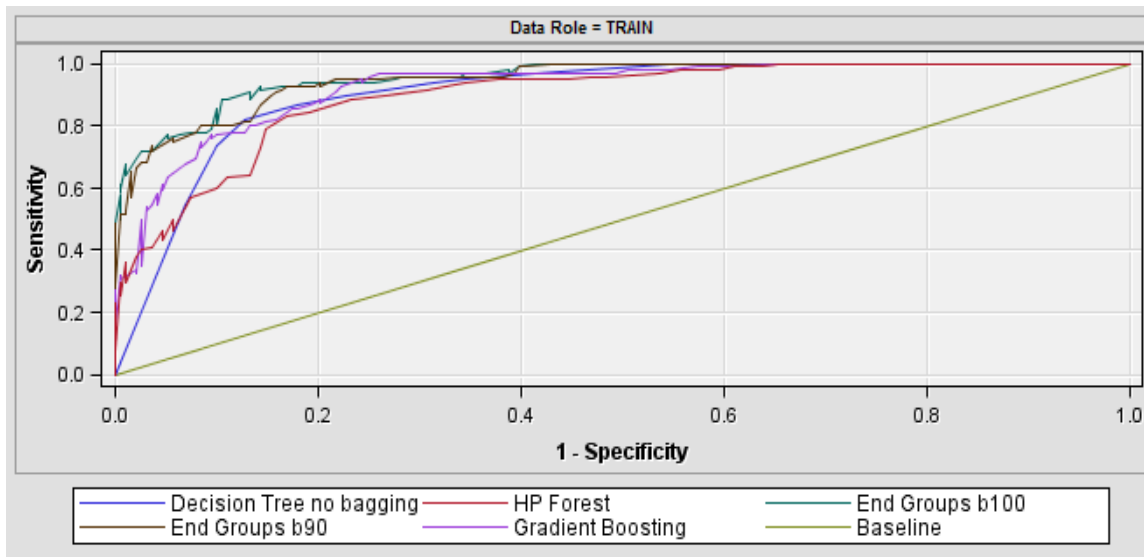


(b)



(c)

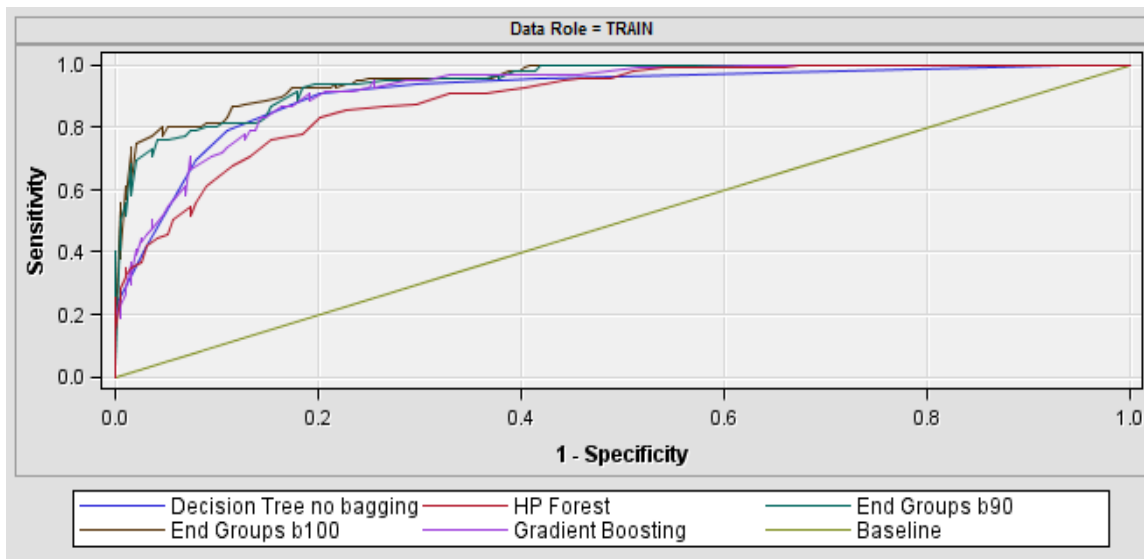
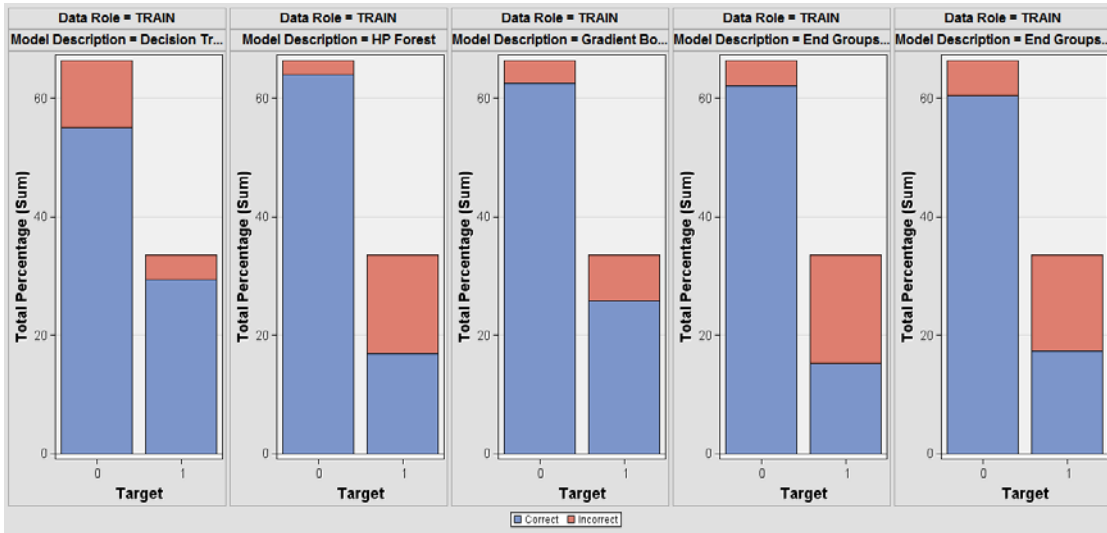
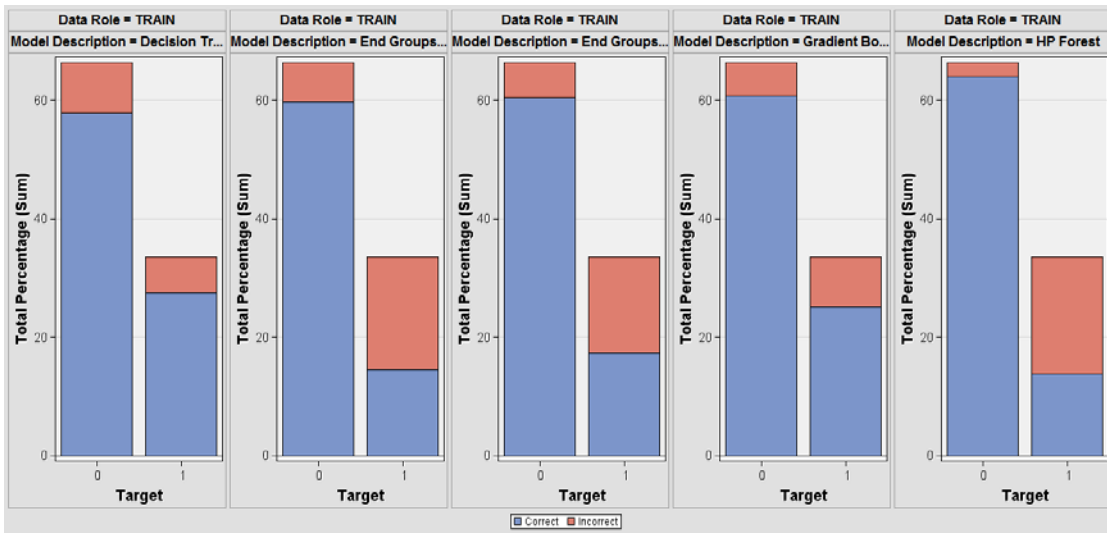


Figure S3. Receiver operating characteristic (ROC) curves of five introduction models: (a) variable treatment I, (b) variable treatment II, and (c) variable treatment III.

(a)



(b)



(c)

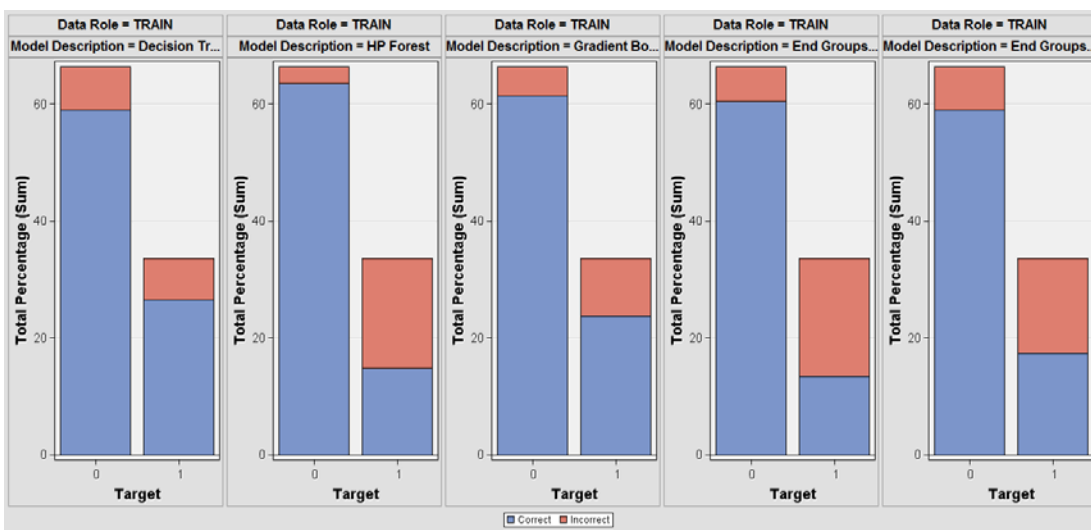


Figure S4. Classification charts of five introduction models: (a) variable treatment I, (b) variable treatment II, and (c) variable treatment III.

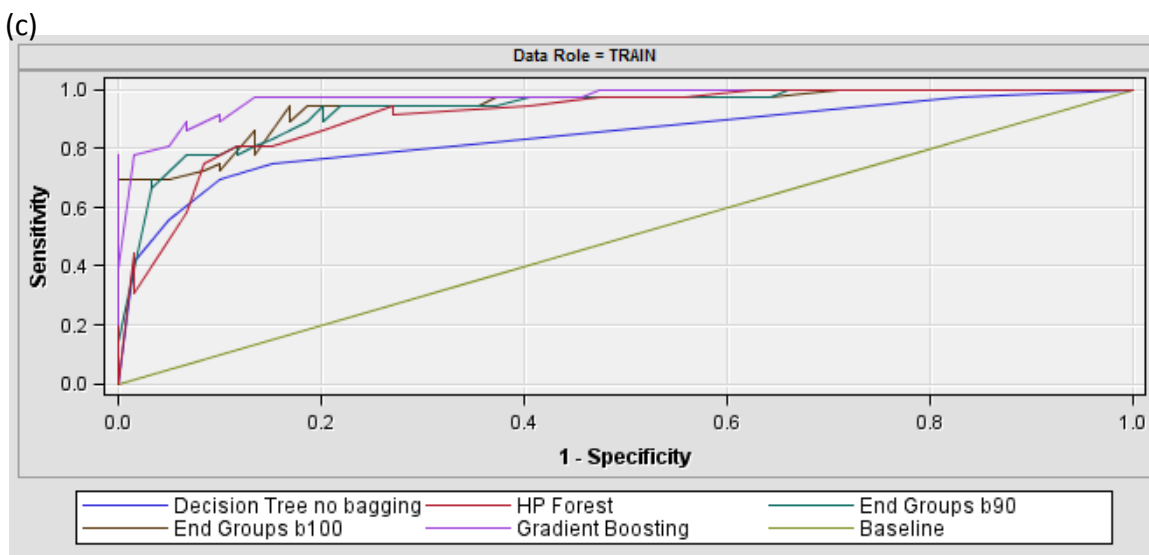
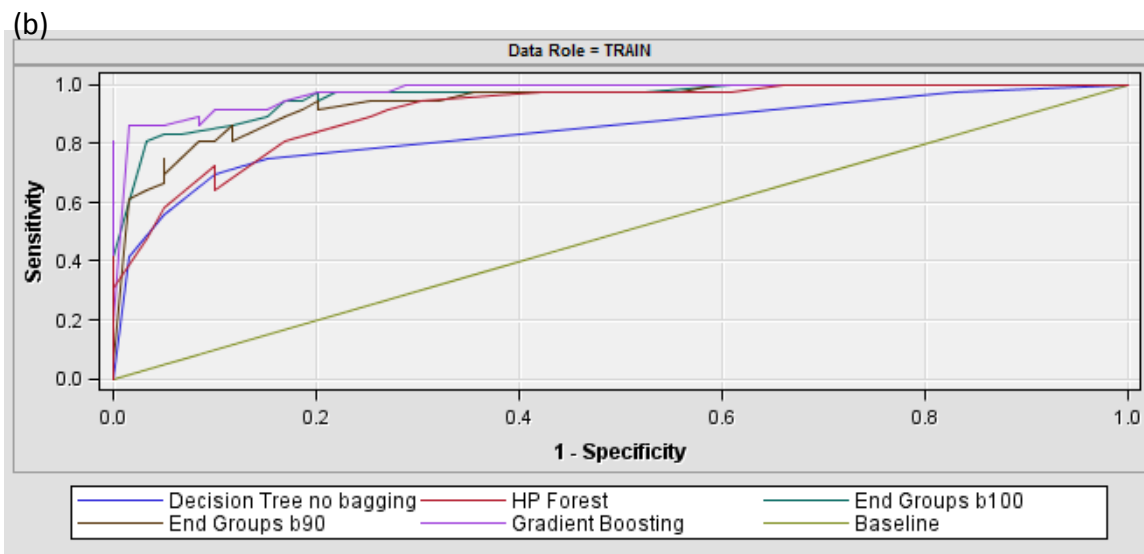
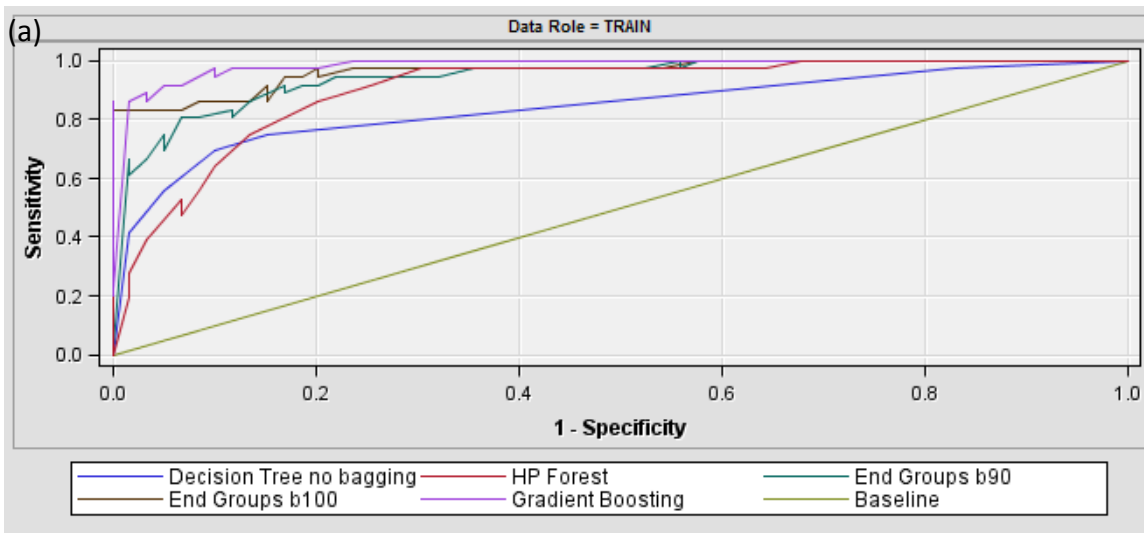
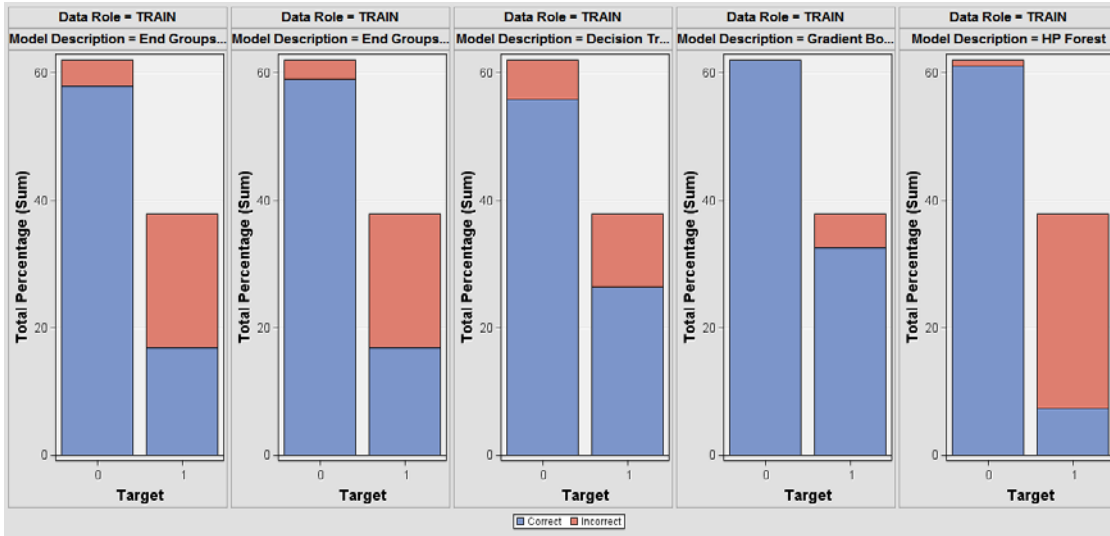
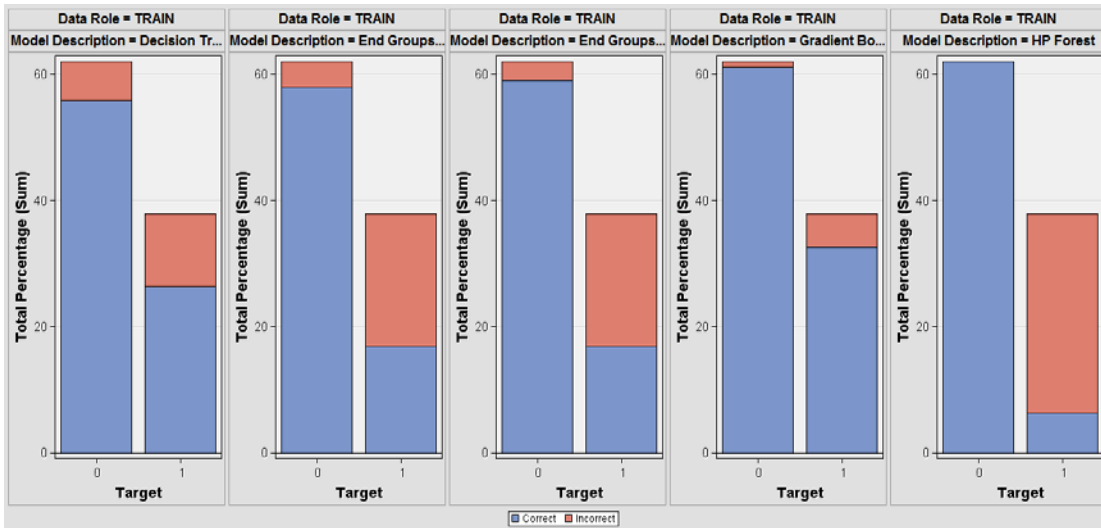


Figure S5. Receiver operating characteristic (ROC) curves of five establishment models: (a) variable treatment I, (b) variable treatment II, and (c) variable treatment III.

(a)



(b)



(c)

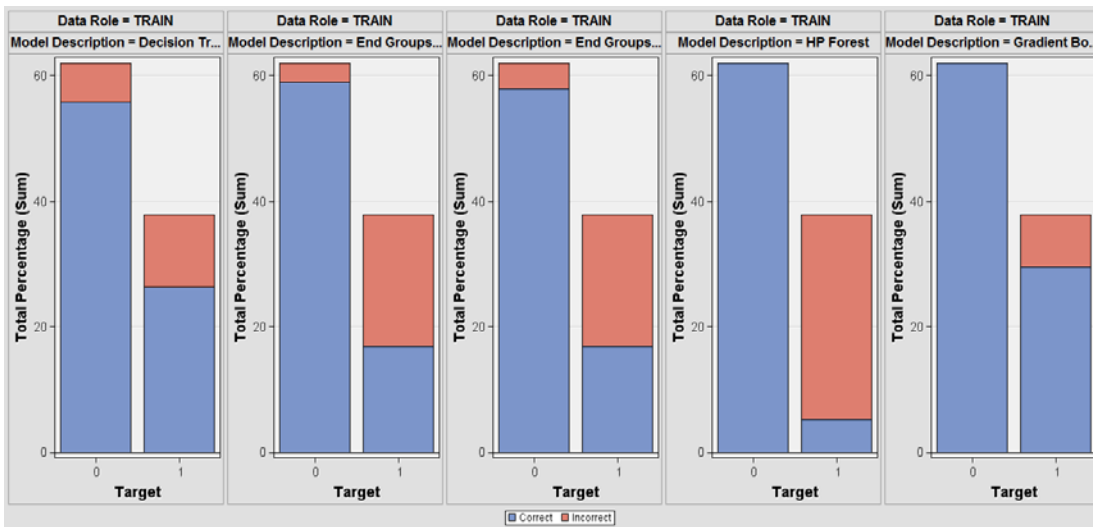


Figure S6. Classification charts of five establishment models: (a) variable treatment I, (b) variable treatment II, and (c) variable treatment III.