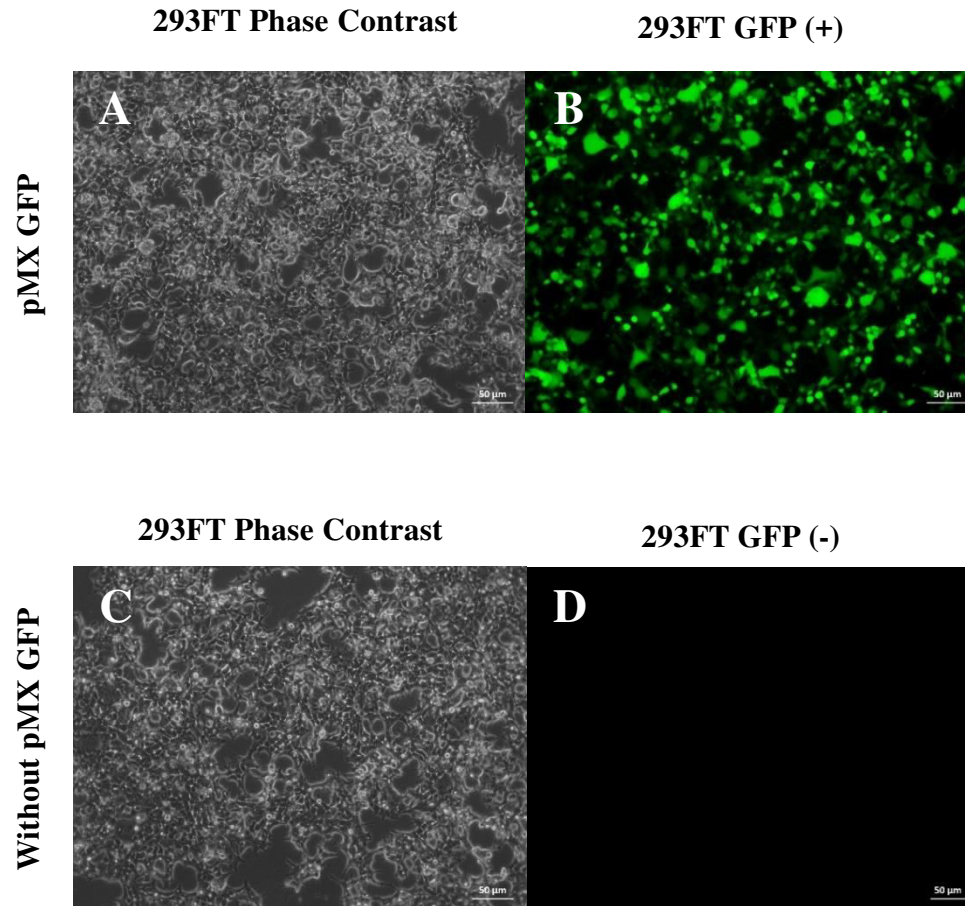
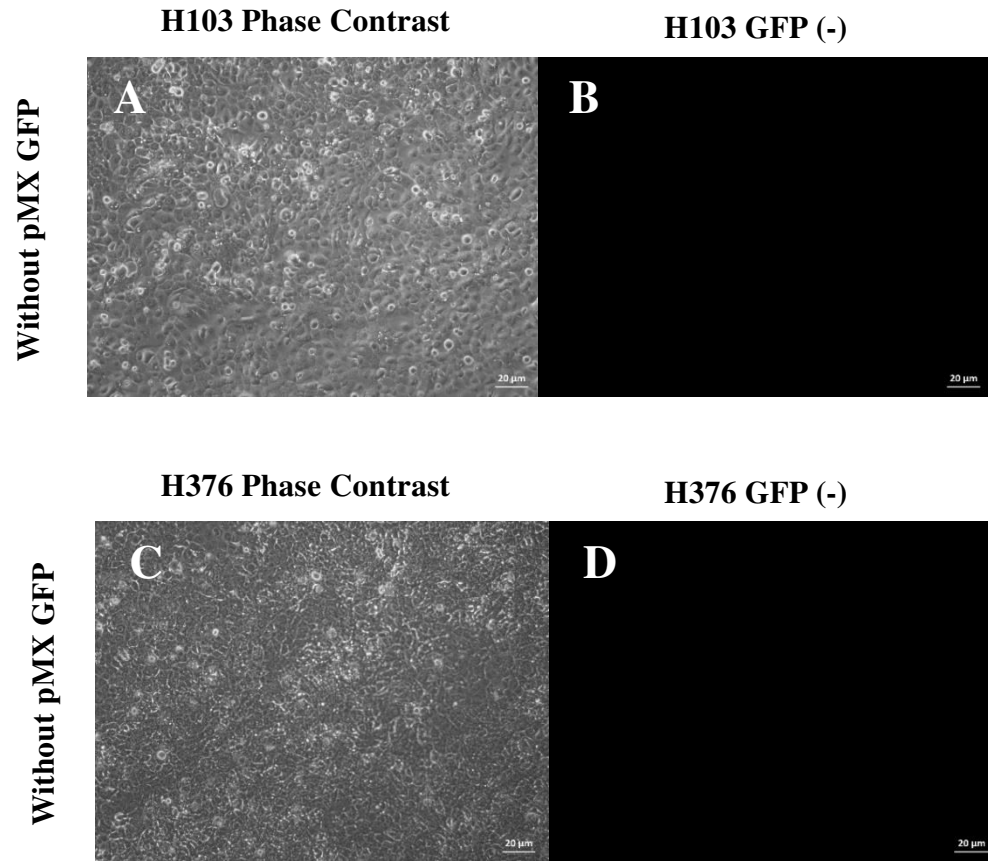


# Supplementary Figure 1



**S1 Figure. Post-transfection of 293FT at 48 hours.** (A-B) 293FT cell line transfected with retro - pMX GFP plasmid served as positive control. (C-D) Transfection of 293FT without retro-pMX GFP used as negative control. Zeiss Axiovert inverted microscope, original magnification: 10x. (PPT)

# Supplementary Figure 2



**S2 Figure.** Transduction of (A-B) H103 and (C-D) H376 without retro-pMX GFP used as negative control. No GFP signals detected. Zeiss Axiovert inverted microscope, original magnification: 20x. (PPT)

# Supplementary Table 1

| NO | Gene Symbol | Forward Primer                     | Reverse Primer                        |
|----|-------------|------------------------------------|---------------------------------------|
| 1  | GAPDH       | AGA GGC AGG GAT GAT GTT CT         | TCT GCT GAT GCC CCC ATG TT            |
| 2  | OCT4        | GAC AGG GGG AGG GGA GGA GCT AGG    | CTT CCC TCC AAC CAG TTG CCC CAA AC    |
| 3  | SOX 2       | GGG AAA TGG GAG GGG TGC AAA AGA GG | TTG CGT GAG TGT GGA TGG GAT TGG TG    |
| 4  | KLF4        | ACG ATC GTG GCC CCG GAA AAG GAC C  | TGA TTG TAG TGC TTT CTG GCT GGG CTC C |
| 5  | C-MYC       | GCG TCC TGG GAA GGG AGA TCC GGA GC | TTG AGG GGC ATC GTC GCG GGA GGC TG    |
| 6  | NANOG       | TTT GGA AGC TGC TGG GGA AG         | GAT GGG AGG AGG GGA GAG GA            |