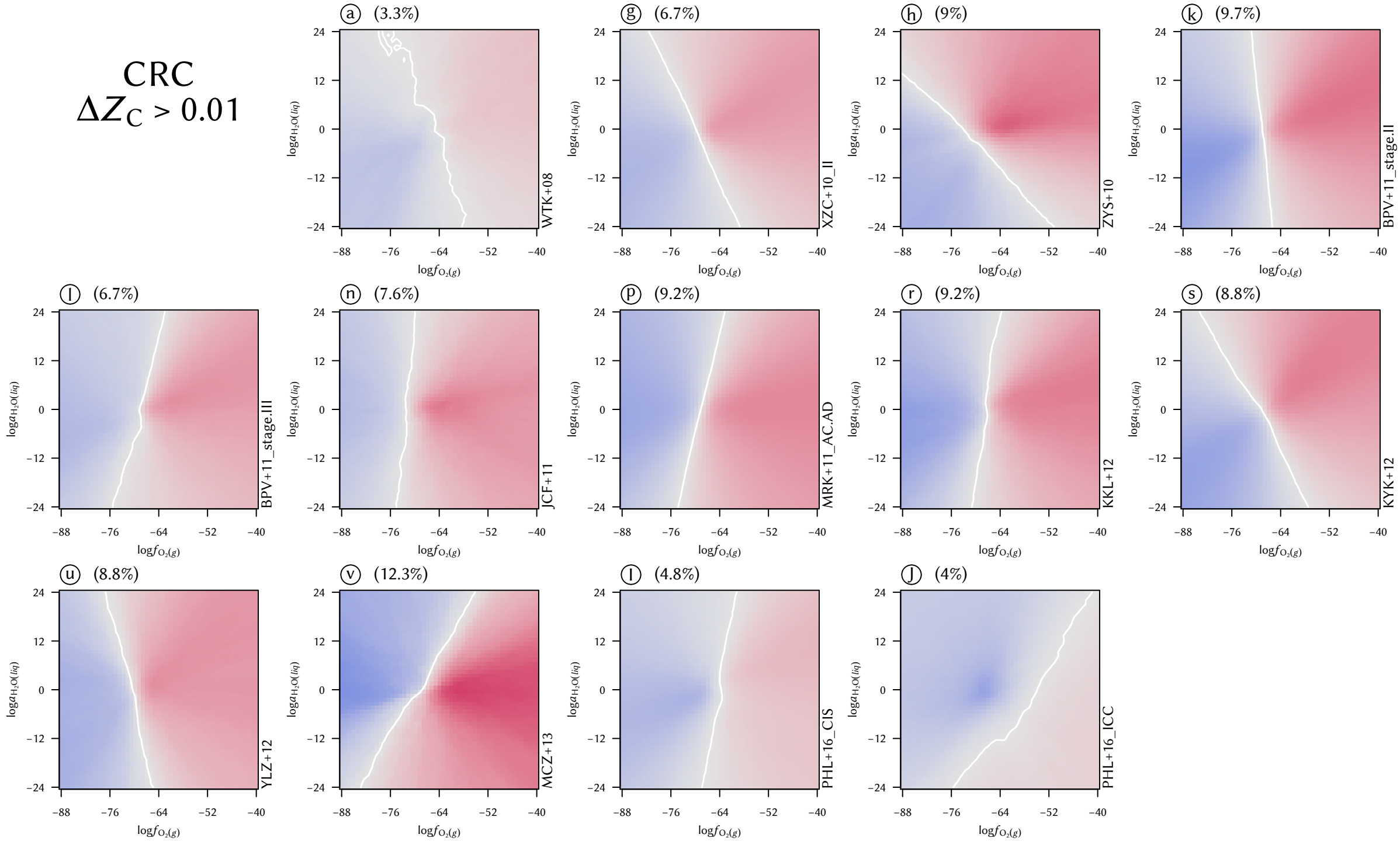
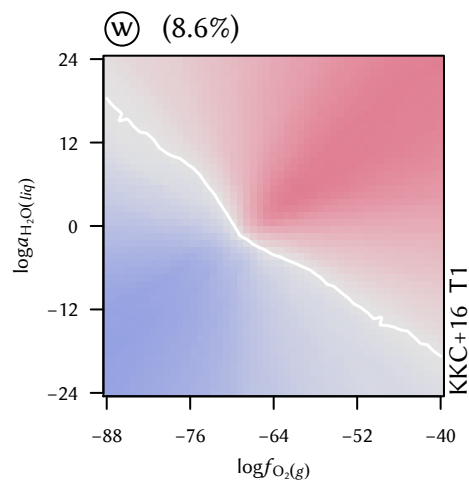
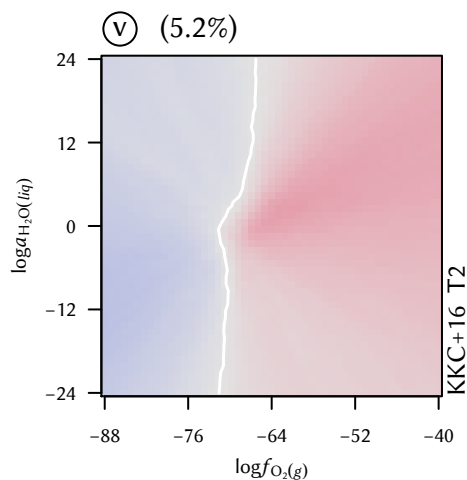
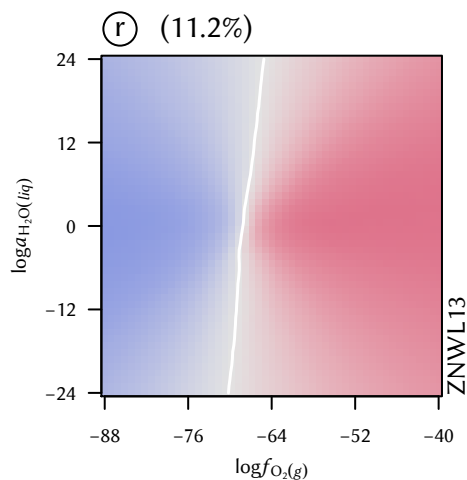
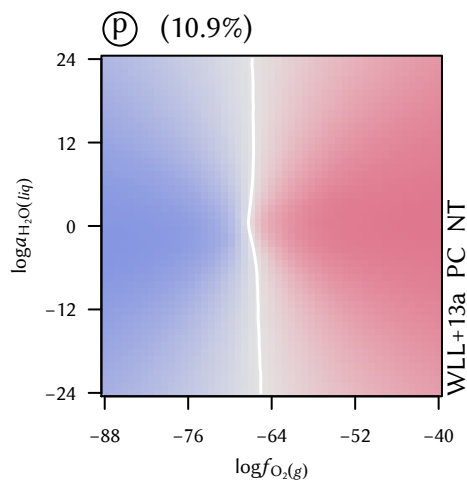
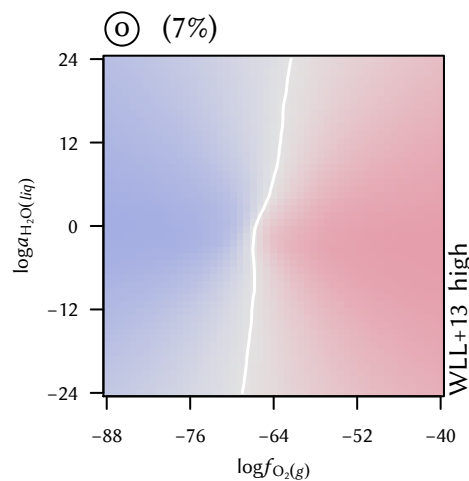
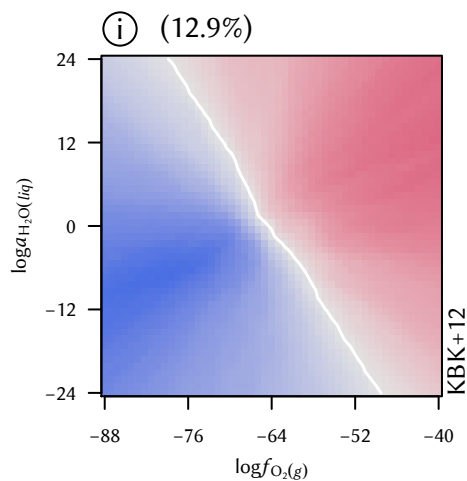
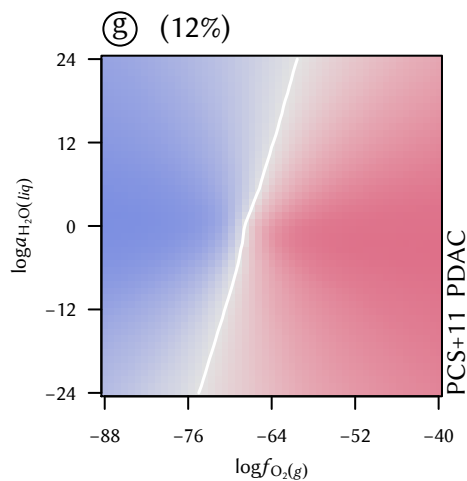
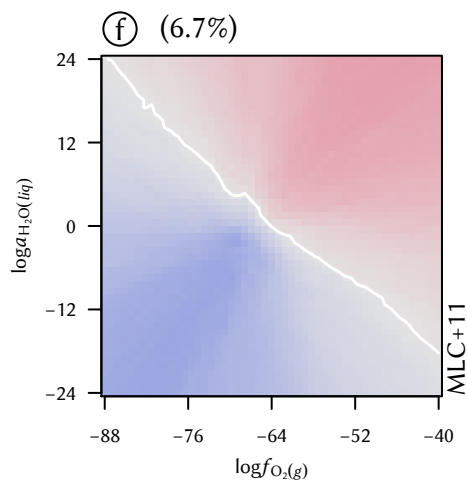
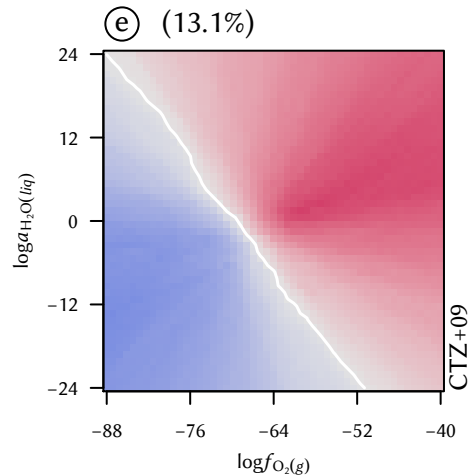
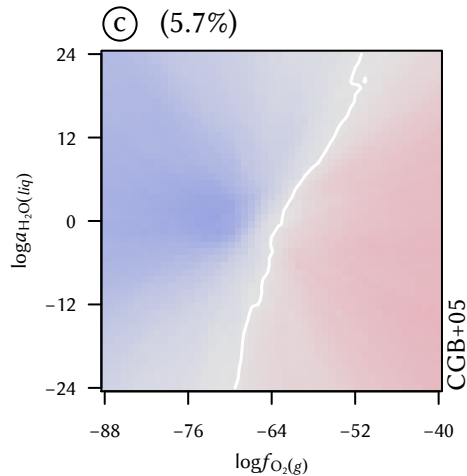
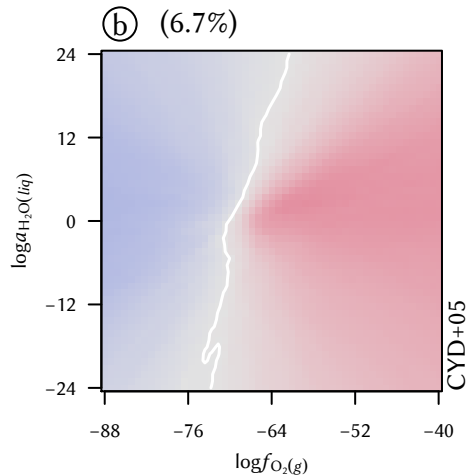


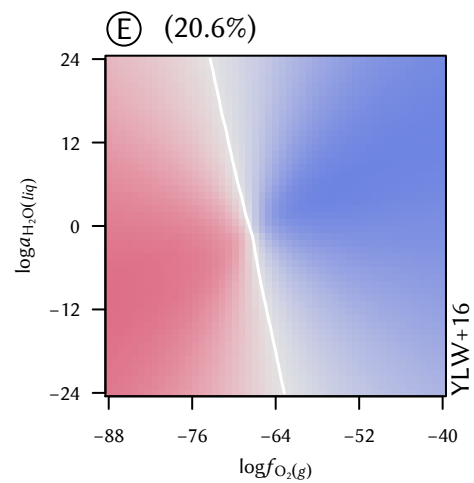
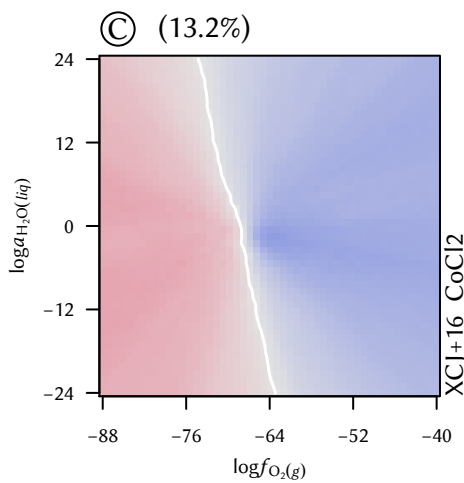
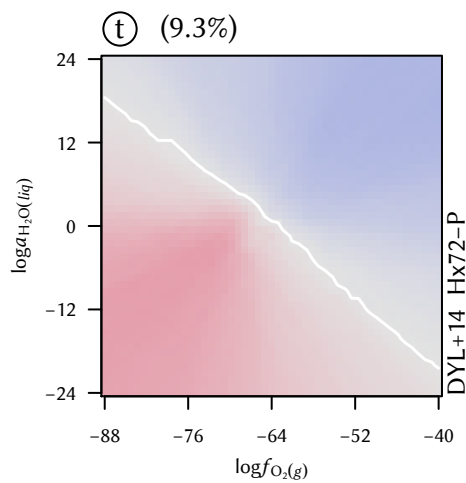
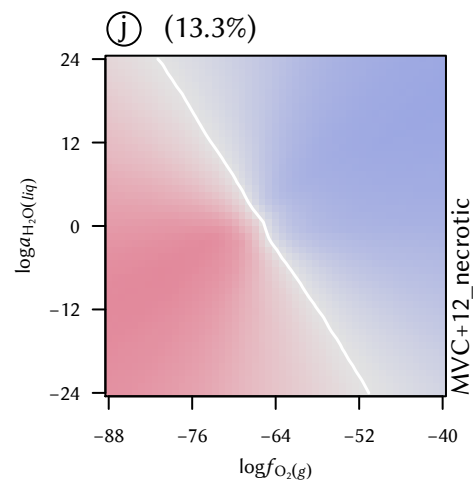
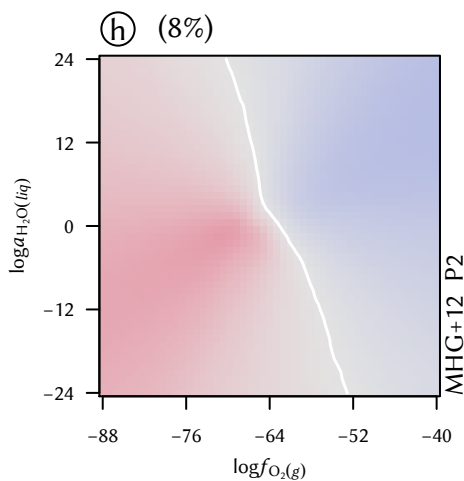
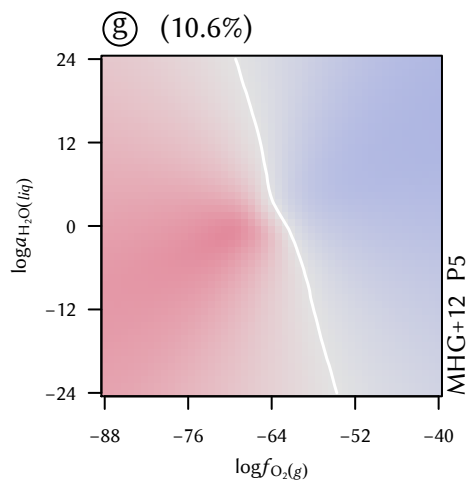
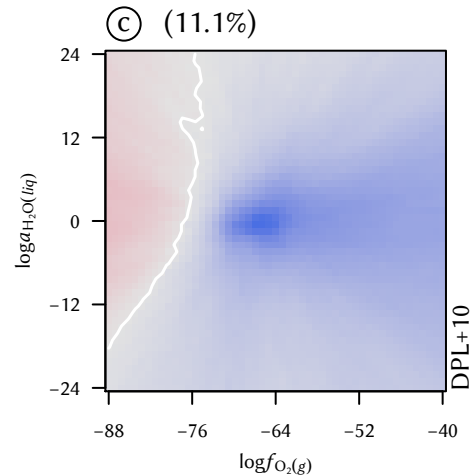
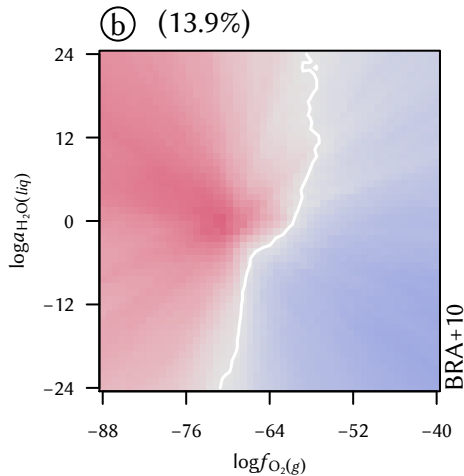
CRC
 $\Delta Z_C > 0.01$



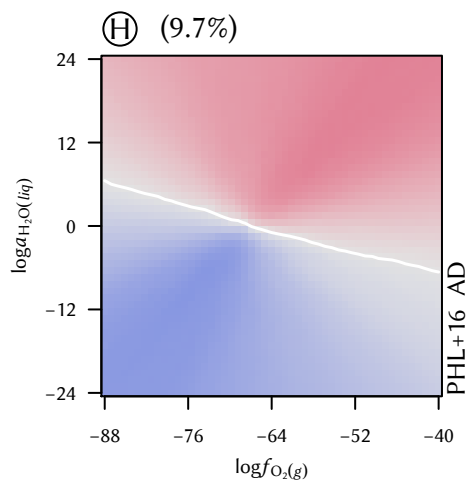
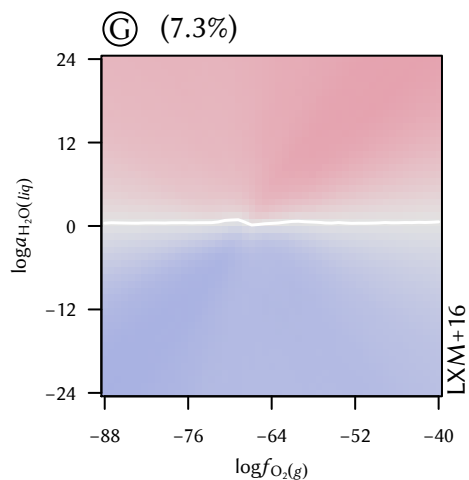
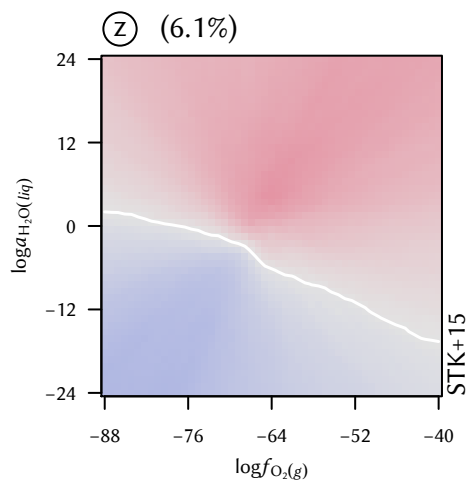
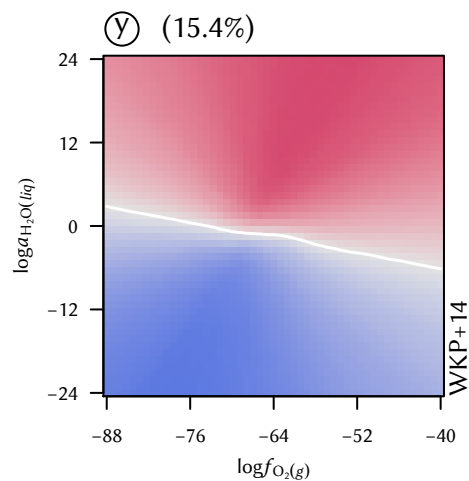
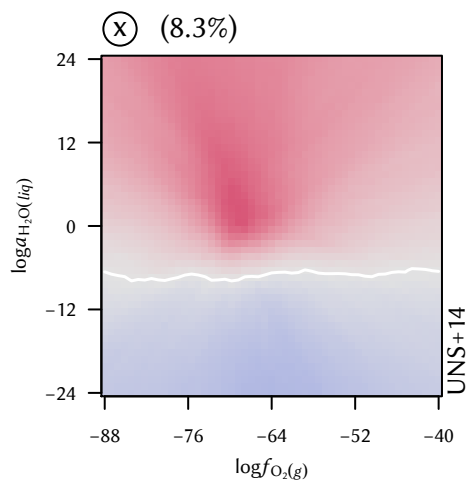
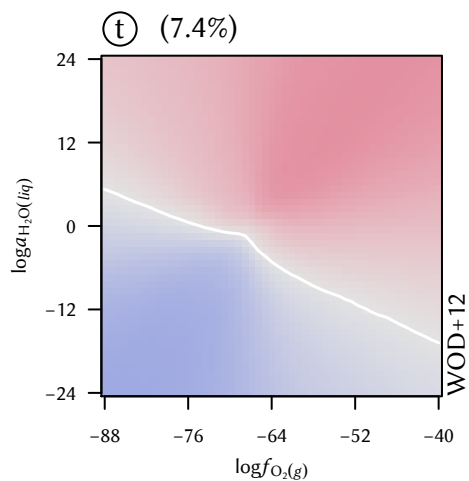
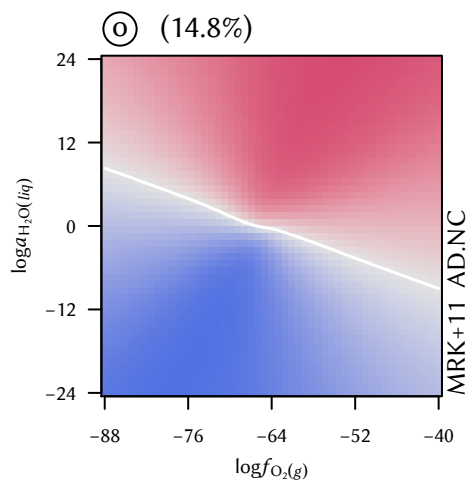
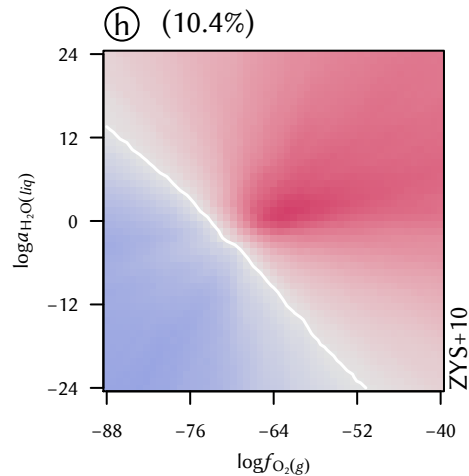
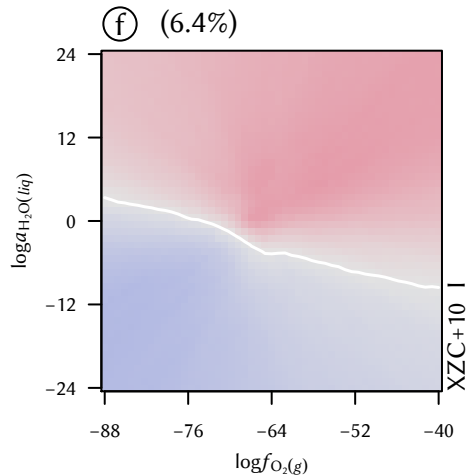
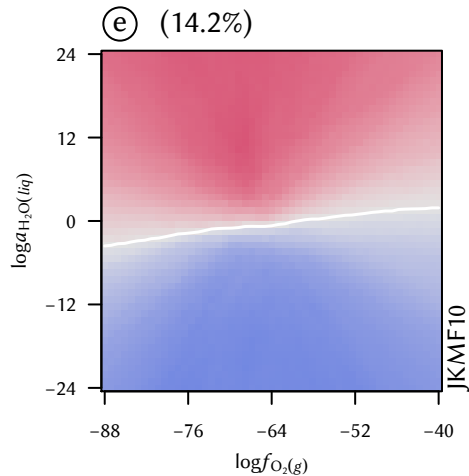
pancreatic
 $\Delta Z_C > 0.01$



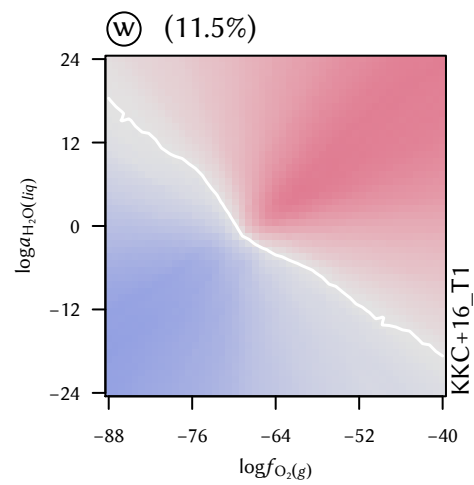
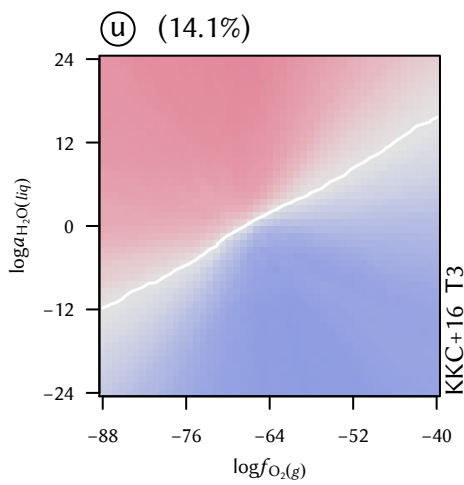
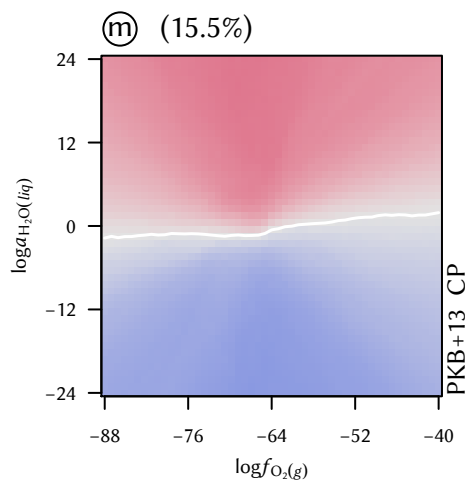
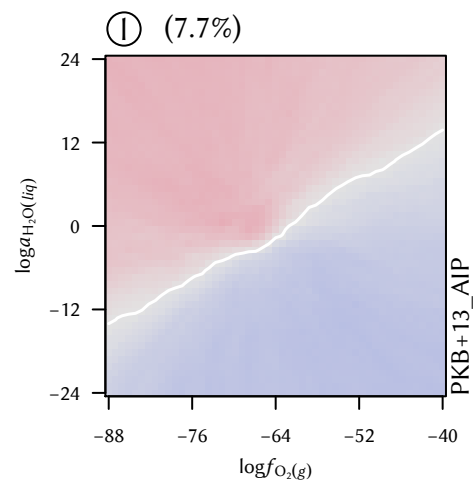
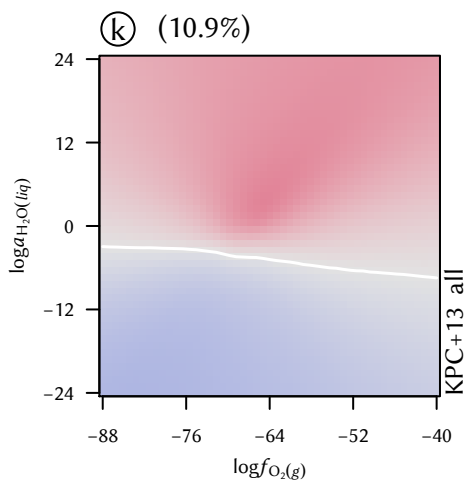
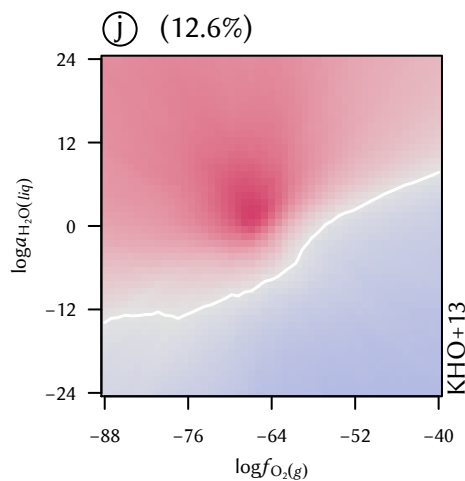
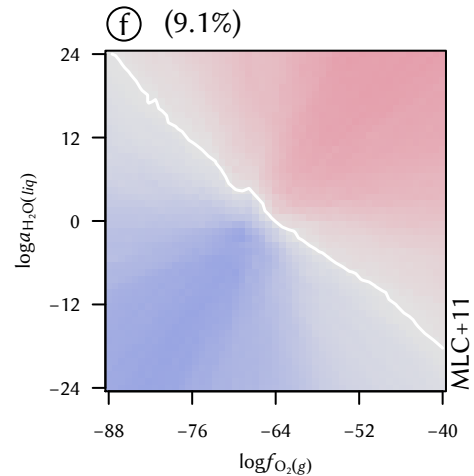
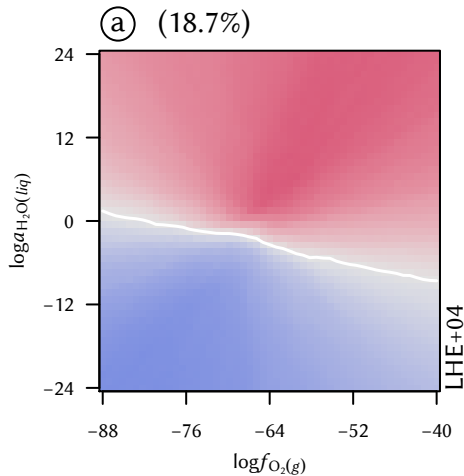
hypoxia
 $\Delta Z_C < -0.01$



CRC
 $\Delta \bar{n}_{\text{H}_2\text{O}} > 0.01$



pancreatic
 $\Delta \bar{n}_{\text{H}_2\text{O}} > 0.01$



osmotic
 $\Delta \bar{n}_{\text{H}_2\text{O}} < -0.01$

