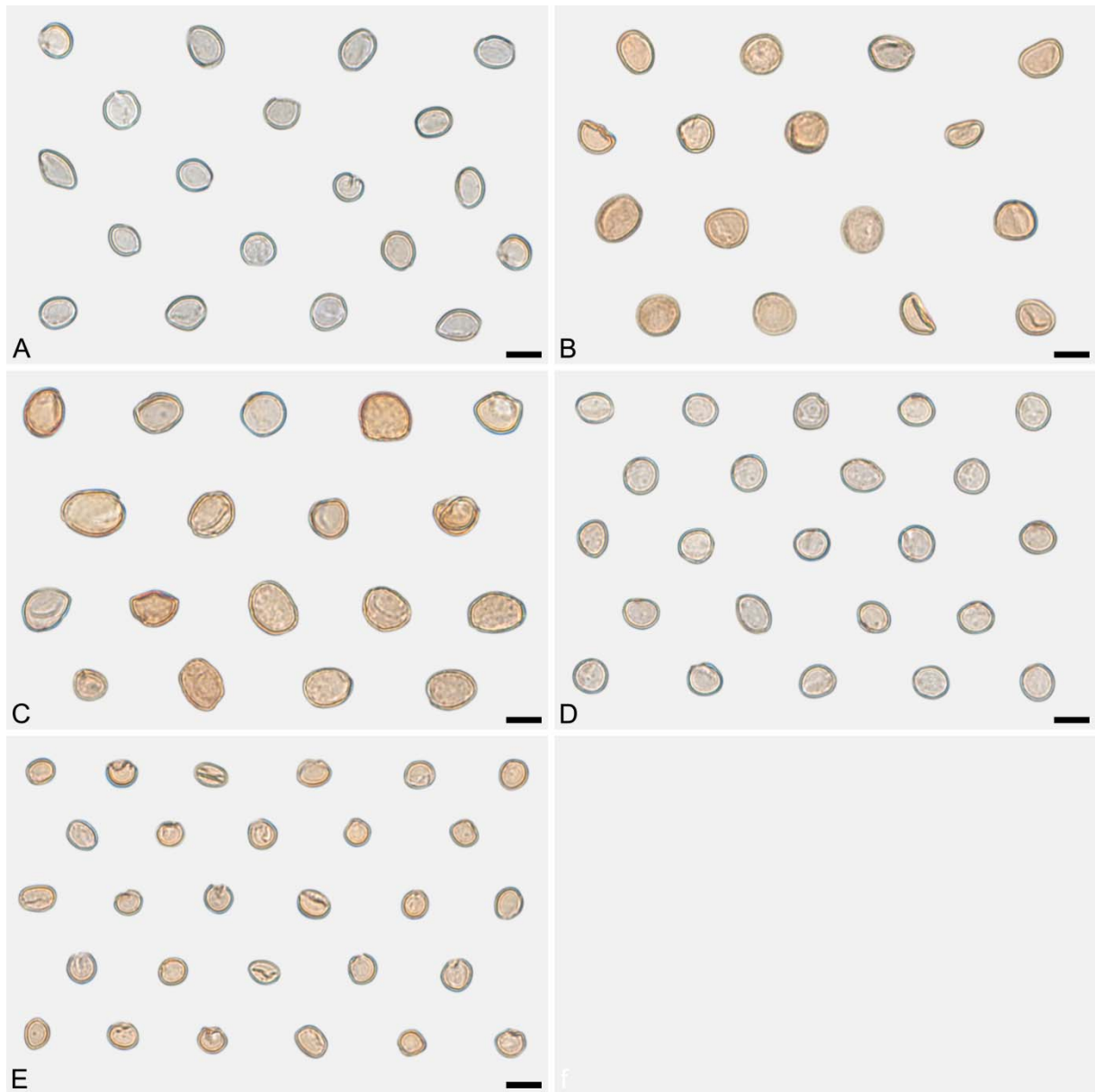


# Supplementary File S1

## Pollen morphology of extant Saururaceae

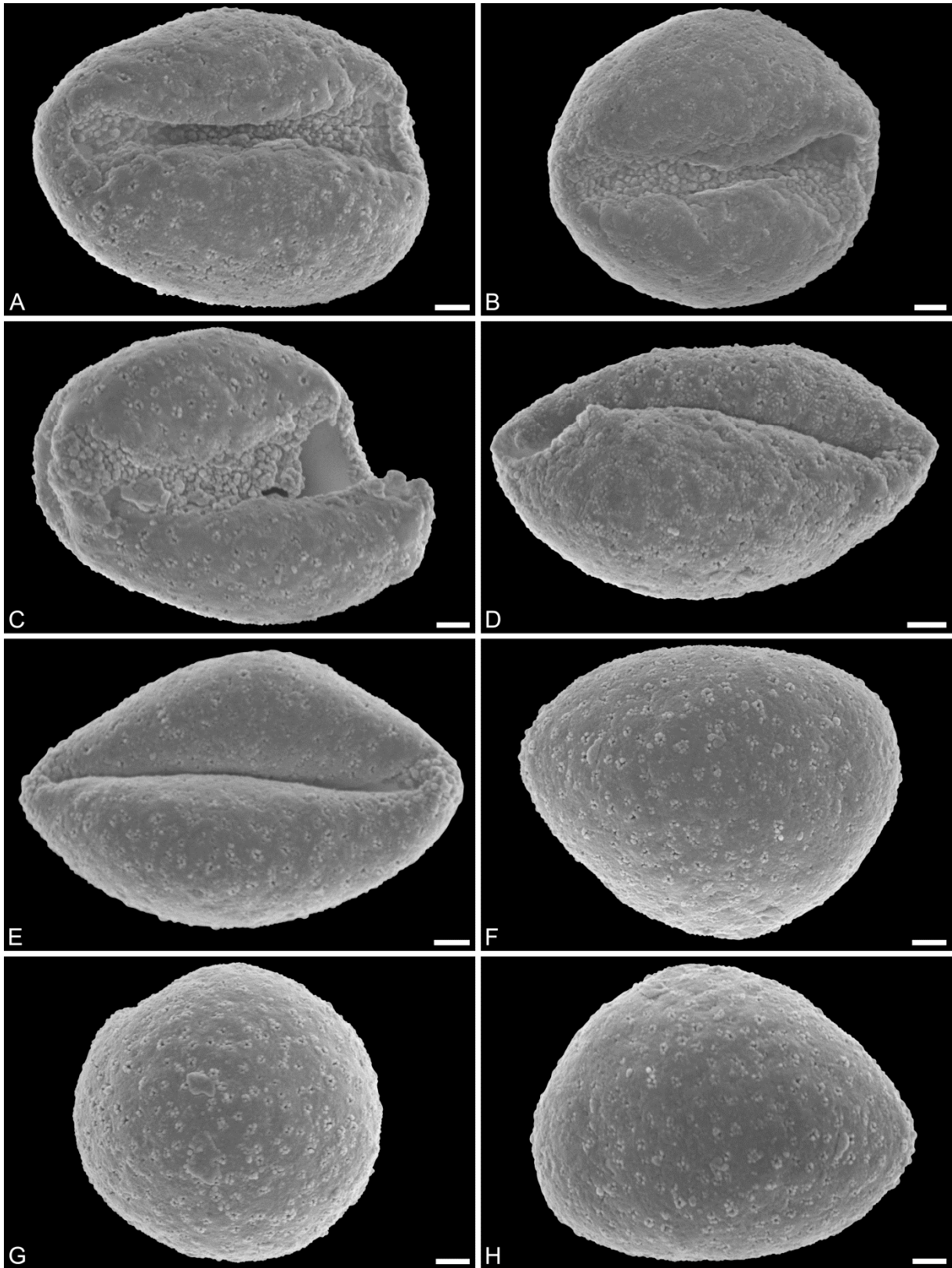
### CONTENT

This supplement file provides micrographs of extant Saururaceae pollen under light (LM)- and scanning electron microscopy (SEM).



**Figure S1.** LM micrographs of extant Saururaceae.

**A)** *Anemopsis californica* Hook & Arn. [WU: Mexico, Baja California, Rancho La Suerte; coll. R.F. Thorne, s.n.]. **B)** *Gymnotheca chinensis* Decne. [WU 0039758]. **C)** *Houttuynia cordata* Thunb. [WU 0039759; WU 0062658]. **D)** *Saururus cernuus* L. [WU 0039743]. **E)** *Saururus chinensis* (Lour.) Baill. [WU 0039752]. Scale bars: 10  $\mu$ m.



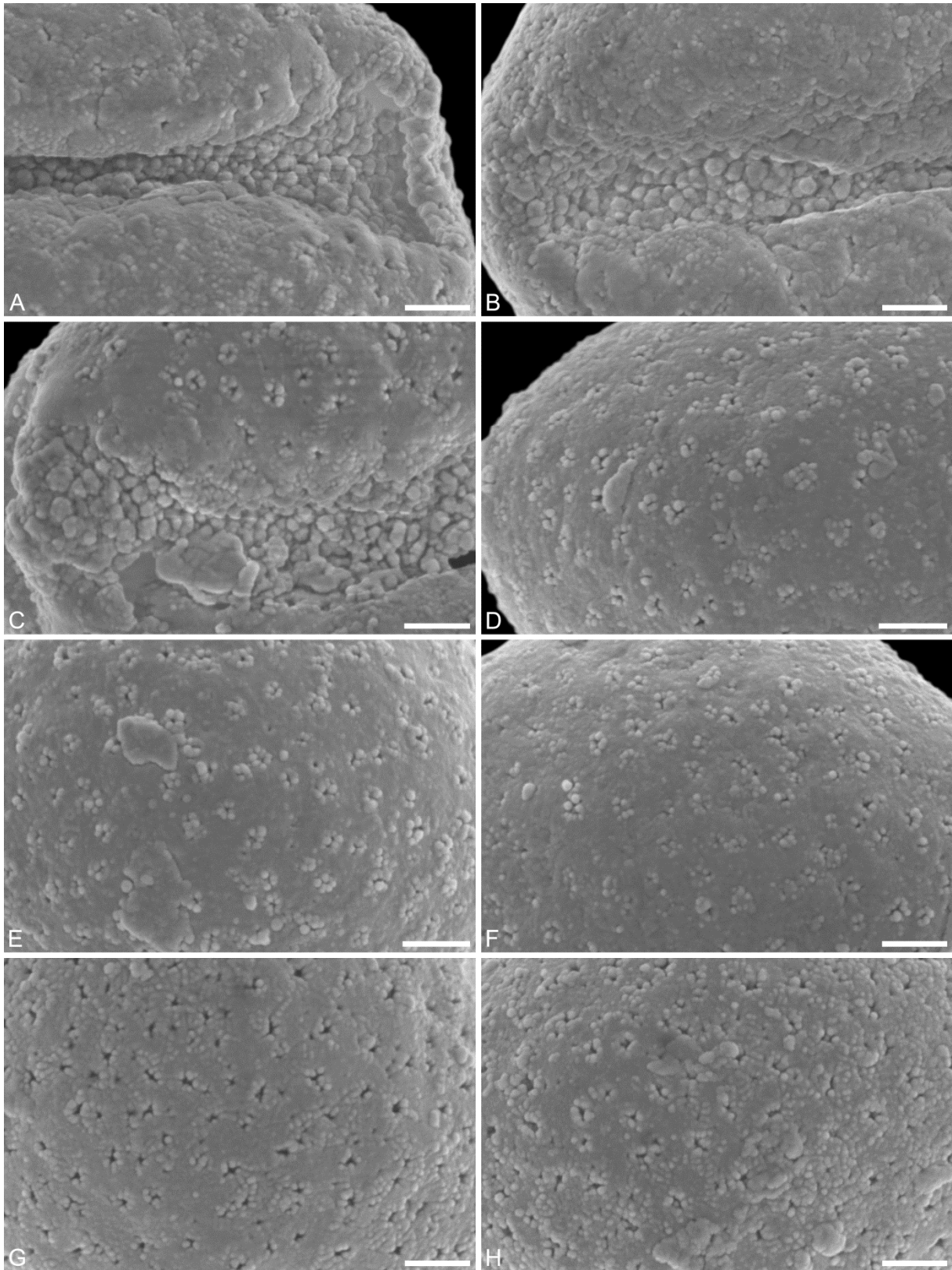
**Figure S2.** SEM micrographs of *Anemopsis californica* Hook & Arn. [WU: Mexico, Baja California, Rancho La Suerte; coll. R.F. Thorne, s.n.]. IPUW 7513/126.

**A–C)** Pollen in distal polar view, showing sulcus and sulcus membrane.

**D–E)** Pollen in distal polar view, showing sulcus area.

**F–H)** Pollen in proximal polar view.

Scale bars: 1  $\mu\text{m}$ .

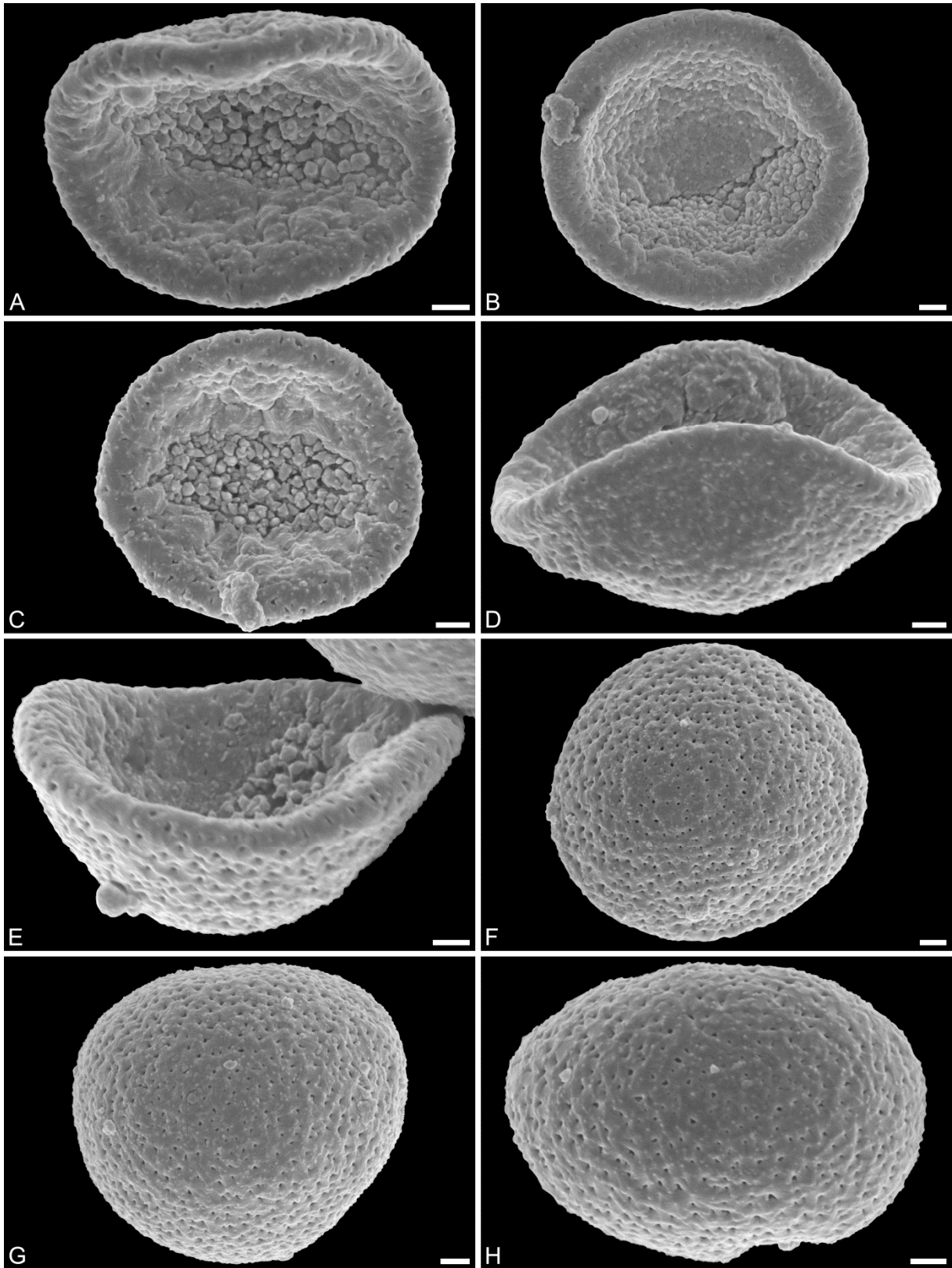


**Figure S3.** SEM micrographs of *Anemopsis californica* Hook & Arn. [WU: Mexico, Baja California, Rancho La Suerte; coll. R.F. Thorne, s.n.]. IPUW 7513/126.

**A–C)** Close-ups of sulcus membrane.

**D–H)** Close-ups of sculpture on proximal side of pollen.

Scale bars: 1 µm.



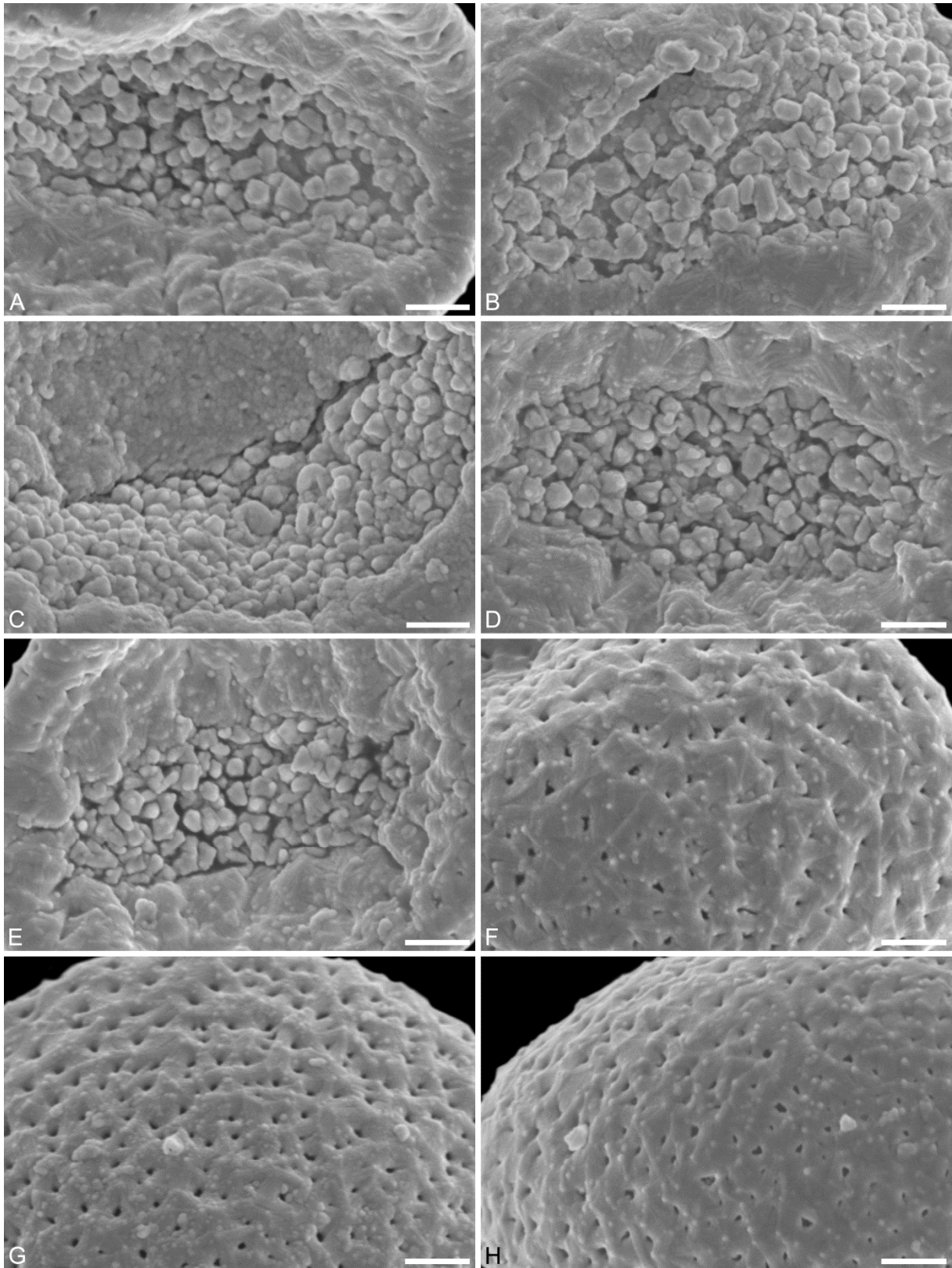
**Figure S4.** SEM micrographs of *Gymnotheca chinensis* Decne. [WU 0039758]. IPUW 7513/127.

**A–C)** Pollen in distal polar view, showing sulcus and sulcus membrane.

**D–E)** Pollen in equatorial view.

**F–H)** Pollen in proximal polar view.

Scale bars: 1  $\mu\text{m}$ .

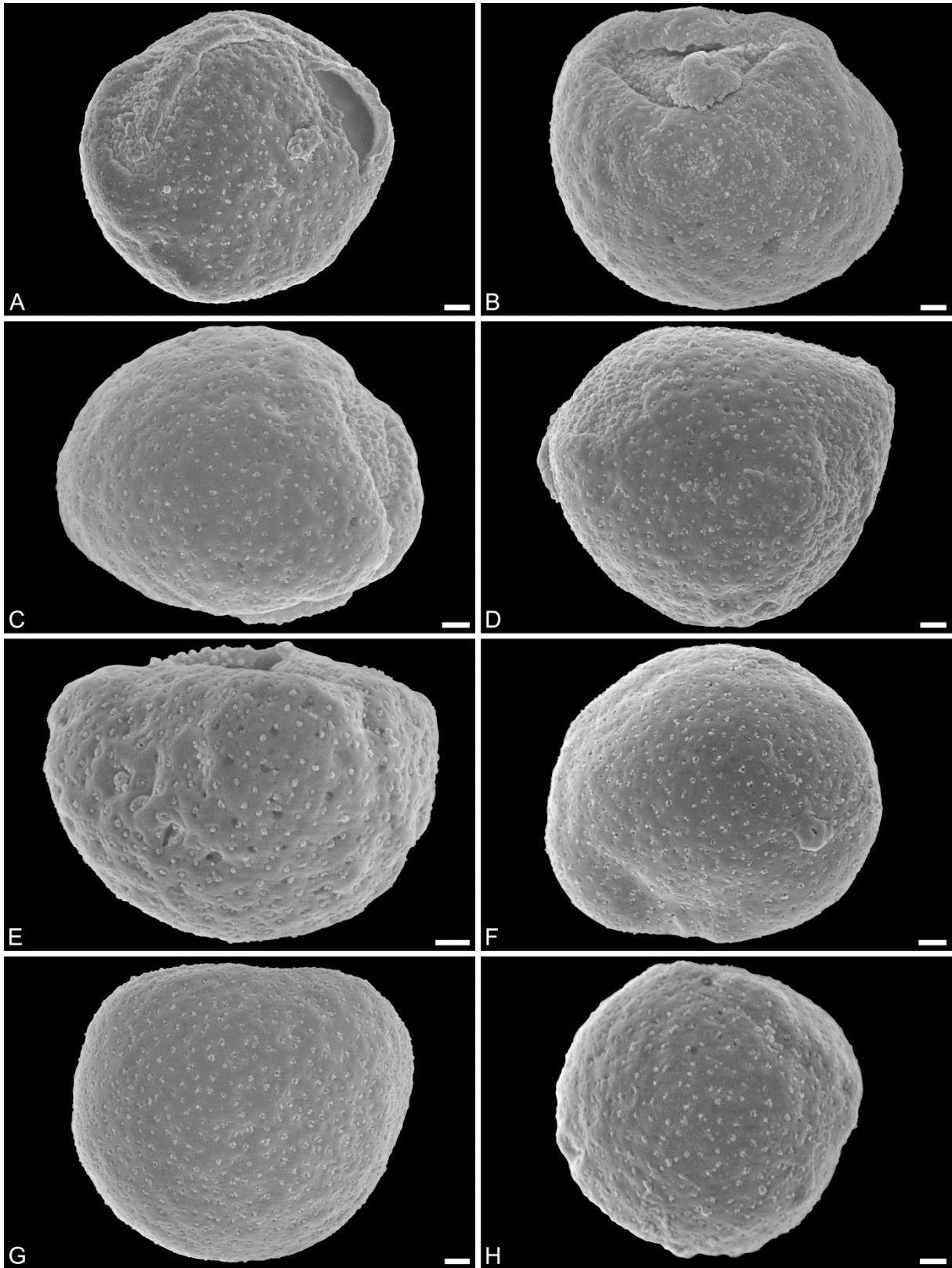


**Figure S5.** SEM micrographs of *Gymnotheca chinensis* Decne. [WU 0039758]. IPUW 7513/127.

**A–E)** Close-ups of sulcus membrane.

**F–H)** Close-ups of sculpture on proximal side of pollen.

Scale bars: 1  $\mu\text{m}$ .



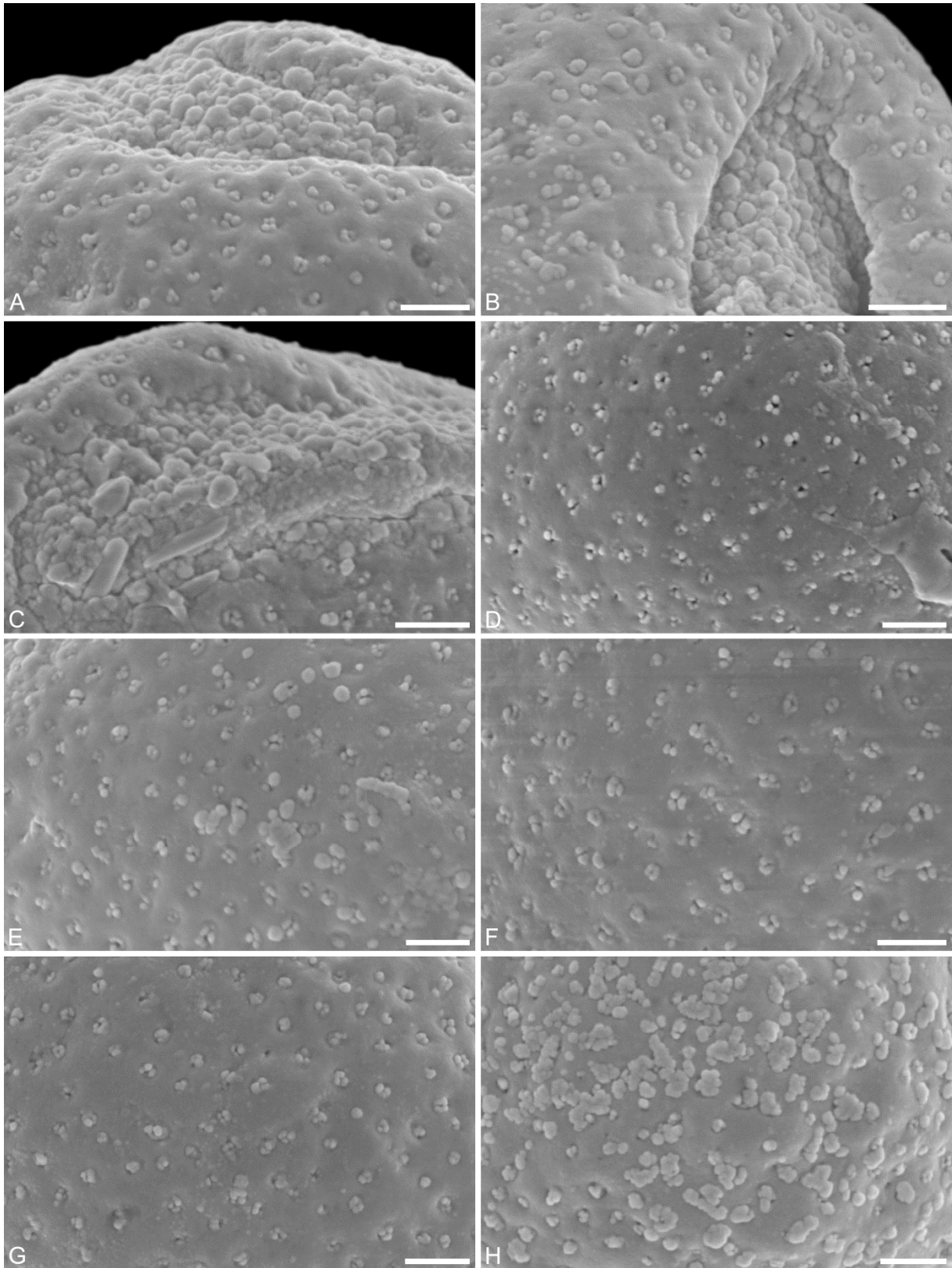
**Figure S6.** SEM micrographs of *Houttuynia cordata* Thunb. [WU 0039759]. IPUW 7513/128.

**A–D)** Pollen in distal polar or oblique view, showing sulcus and sulcus membrane.

**E)** Pollen in equatorial view.

**F–H)** Pollen in proximal polar view.

Scale bars: 1  $\mu\text{m}$ .



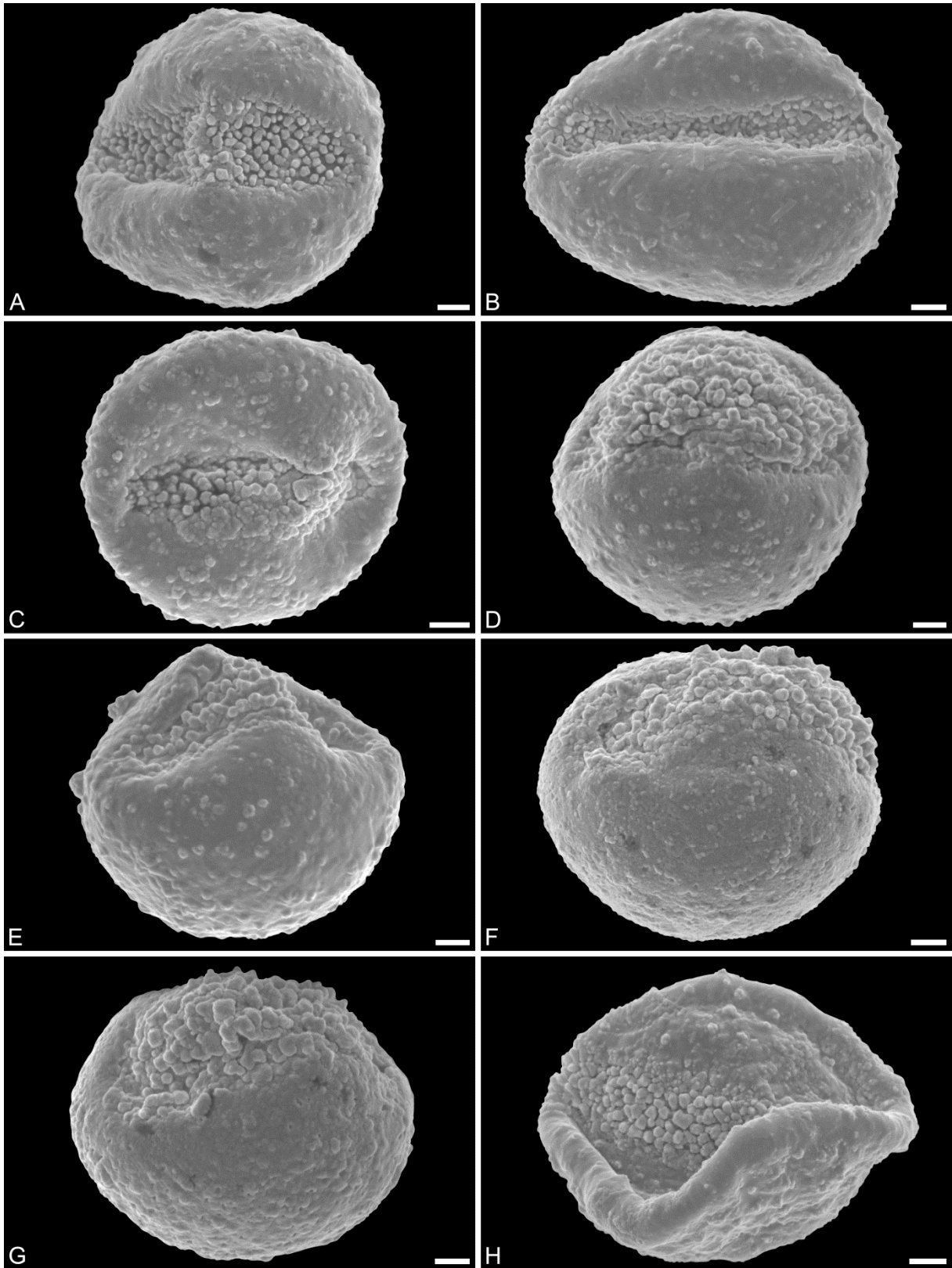
**Figure S7.** SEM micrographs of *Houttuynia cordata* Thunb. [WU 0039759]. IPUW 7513/128.

**A–C)** Close-ups of sulcus membrane.

**D–H)** Close-ups of sculpture on proximal side of pollen.

Scale bars: 1 µm.



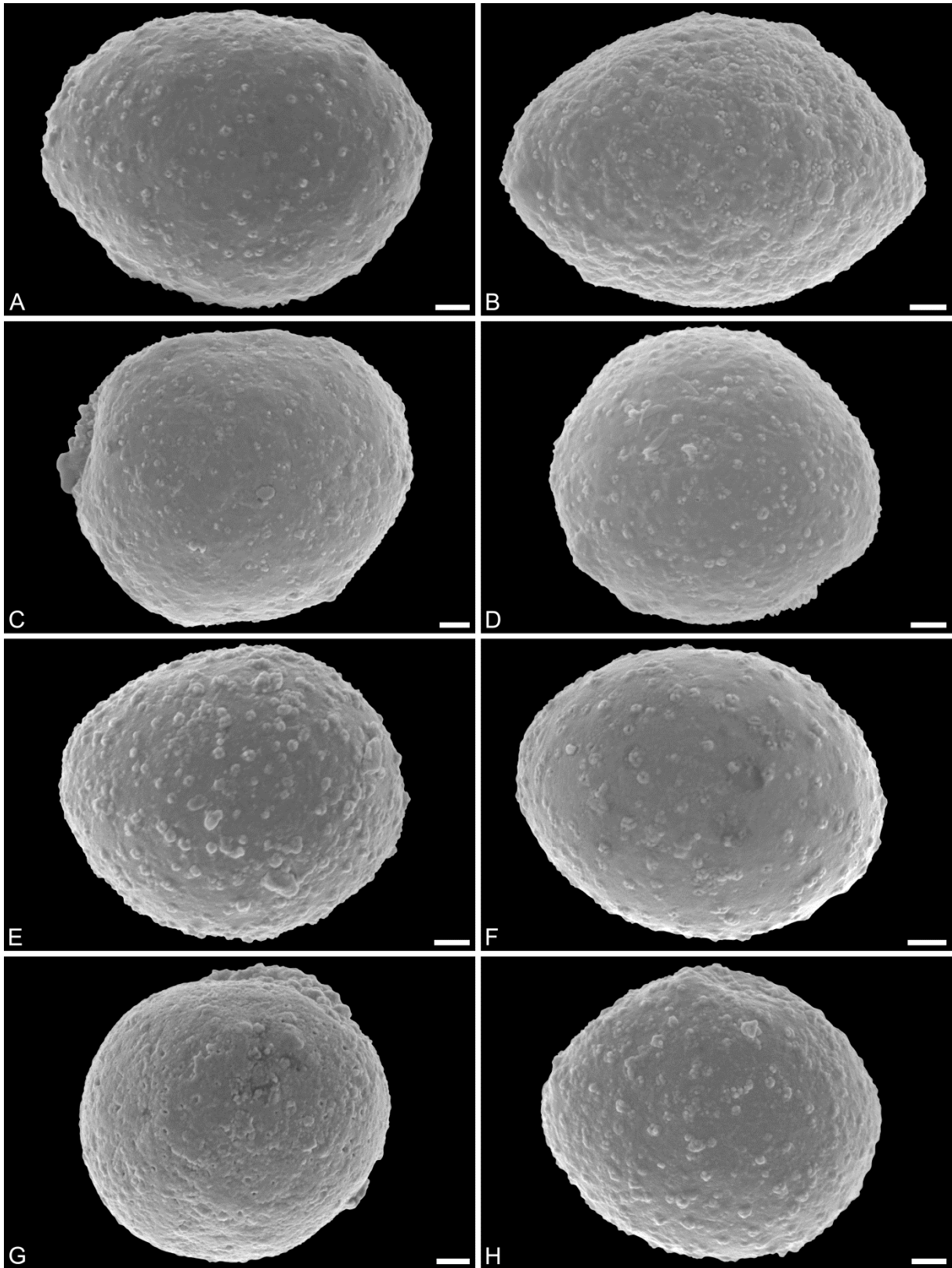


**Figure S8.** SEM micrographs of *Saururus cernuus* L. [WU 0039743]. IPUW 7513/129.

**A–C)** Pollen in distal polar view, showing sulcus and sulcus membrane.

**D–H)** Pollen in equatorial view.

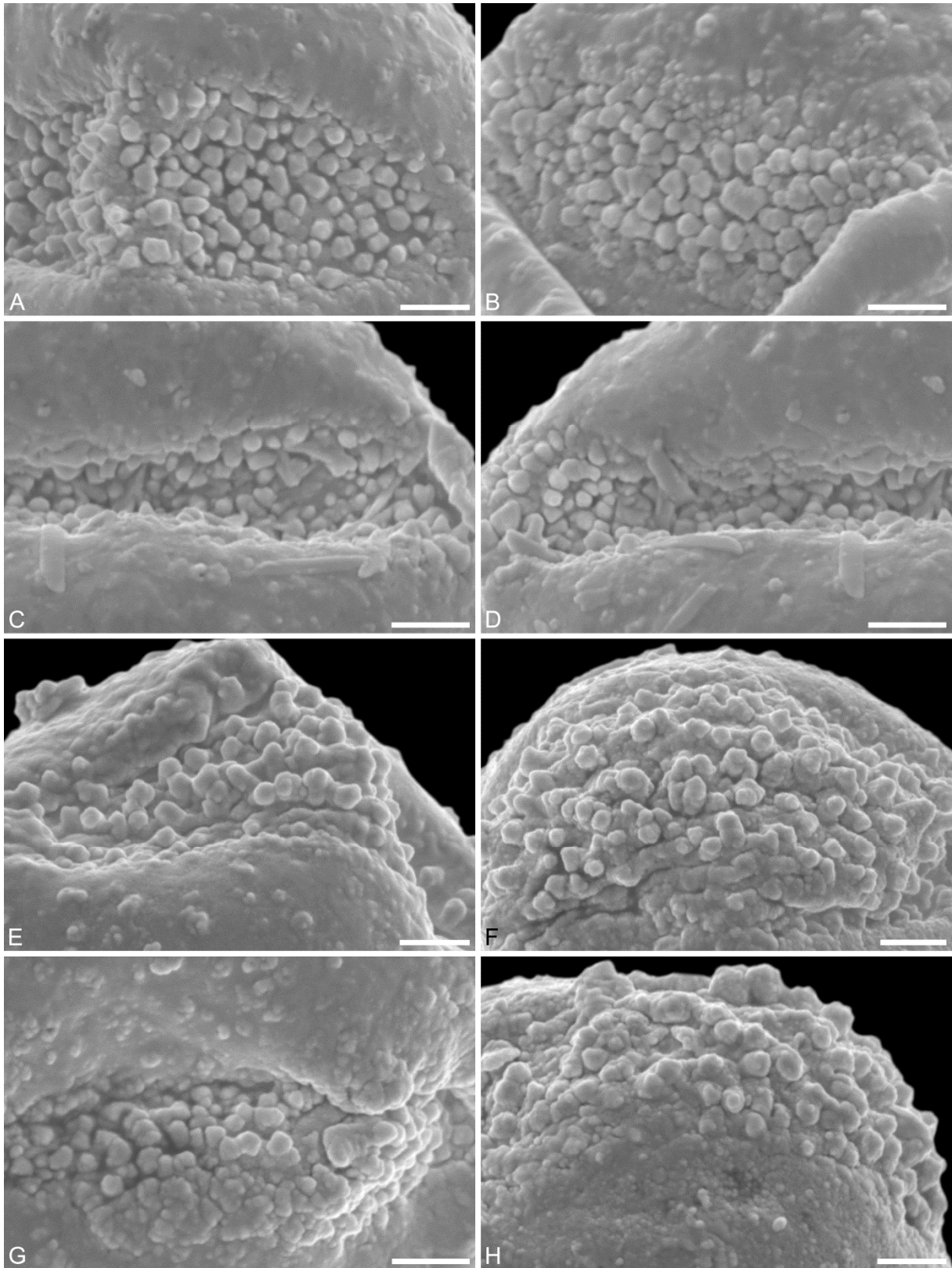
Scale bars: 1  $\mu$ m.



**Figure S9.** SEM micrographs of *Saururus cernuus* L. [WU 0039743]. IPUW 7513/129.

**A–H)** Pollen in proximal polar view.

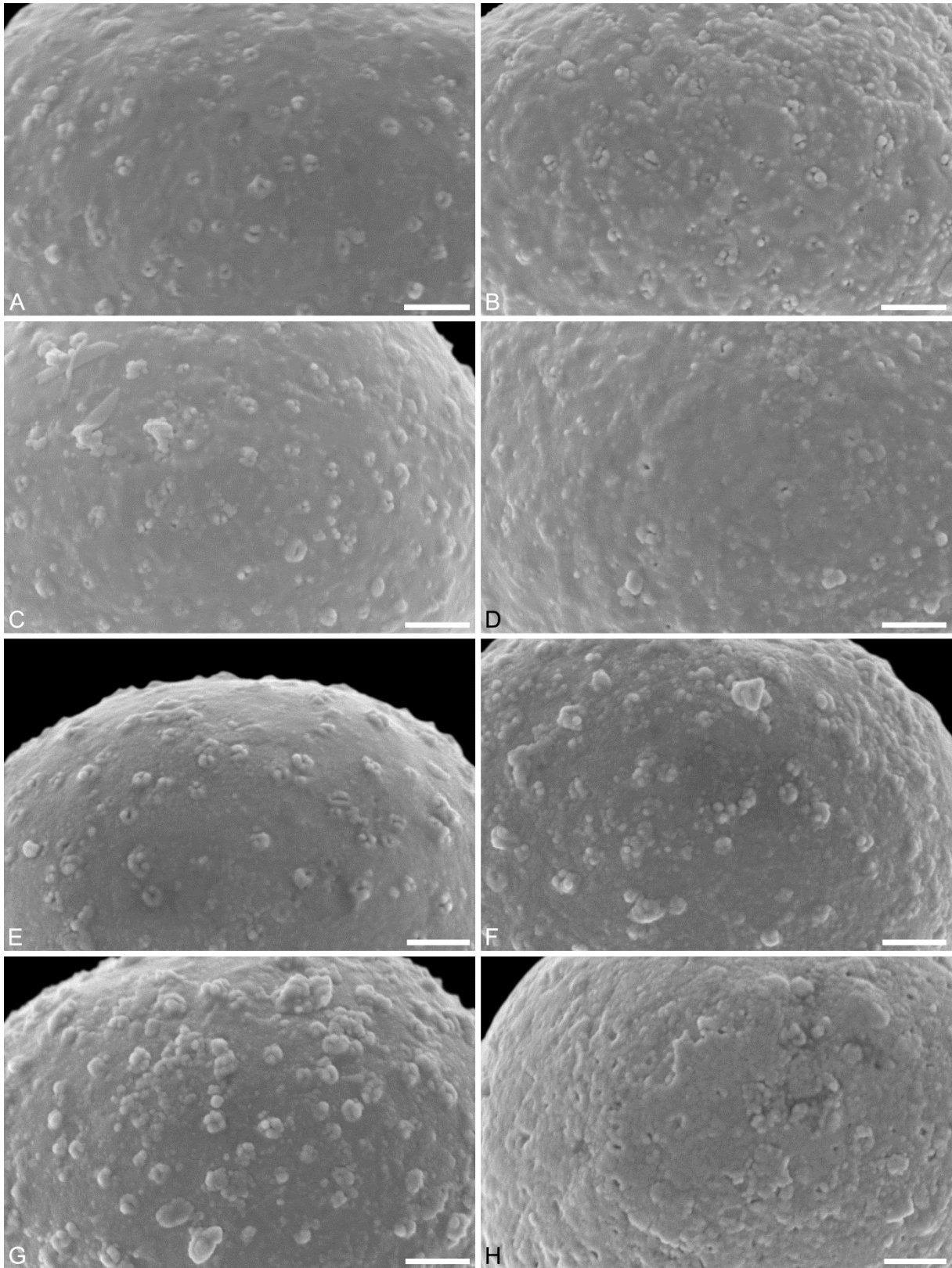
Scale bars: 1  $\mu\text{m}$ .



**Figure S10.** SEM micrographs of *Saururus cernuus* L. [WU 0039743]. IPUW 7513/129.

**A–H)** Close-ups of sulcus membrane.

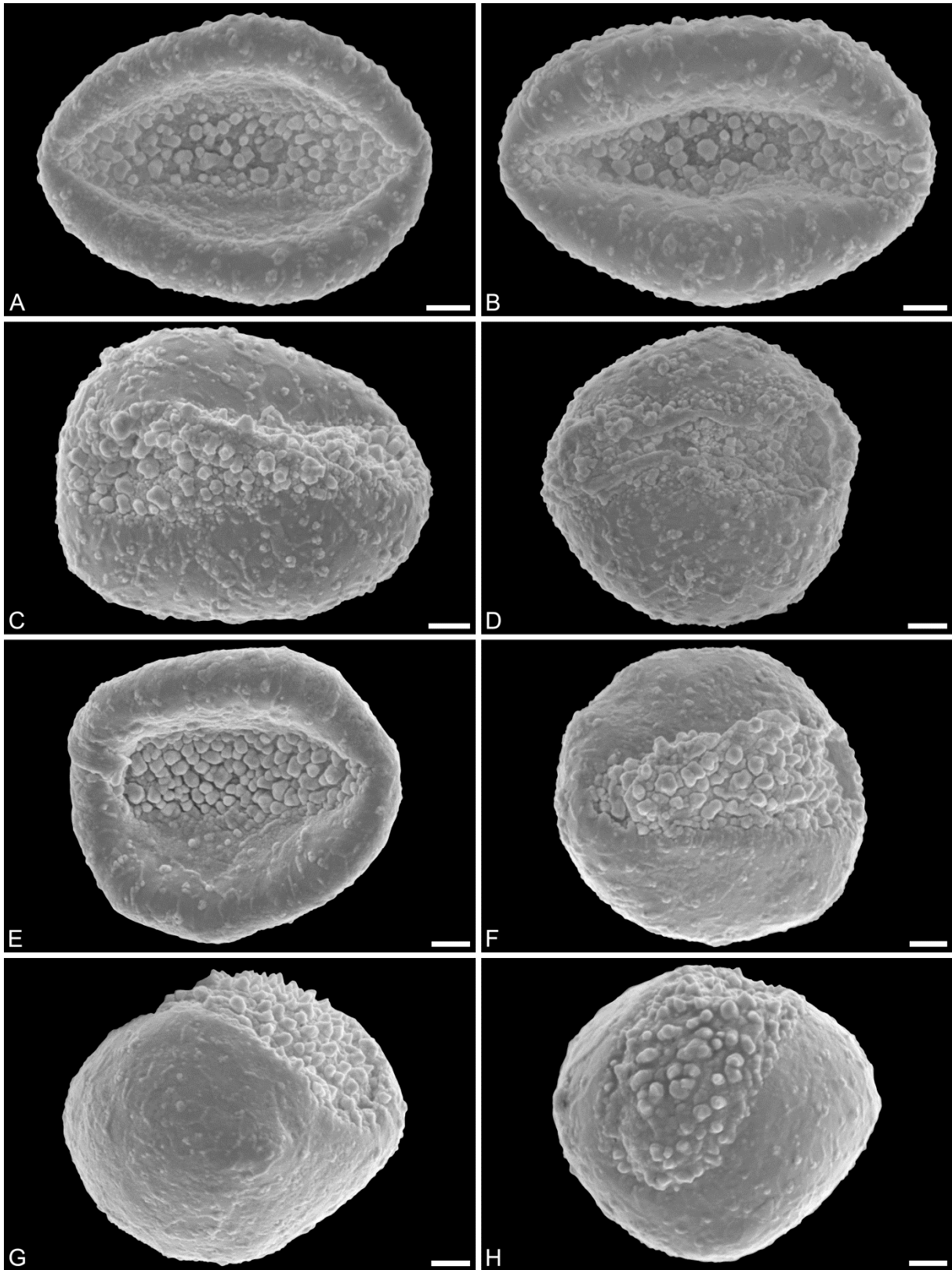
Scale bars: 1  $\mu\text{m}$ .



**Figure S11.** SEM micrographs of *Saururus cernuus* L. [WU 0039743]. IPUW 7513/129.

**A–H)** Close-ups of sculpture on proximal side of pollen.

Scale bars: 1  $\mu\text{m}$ .

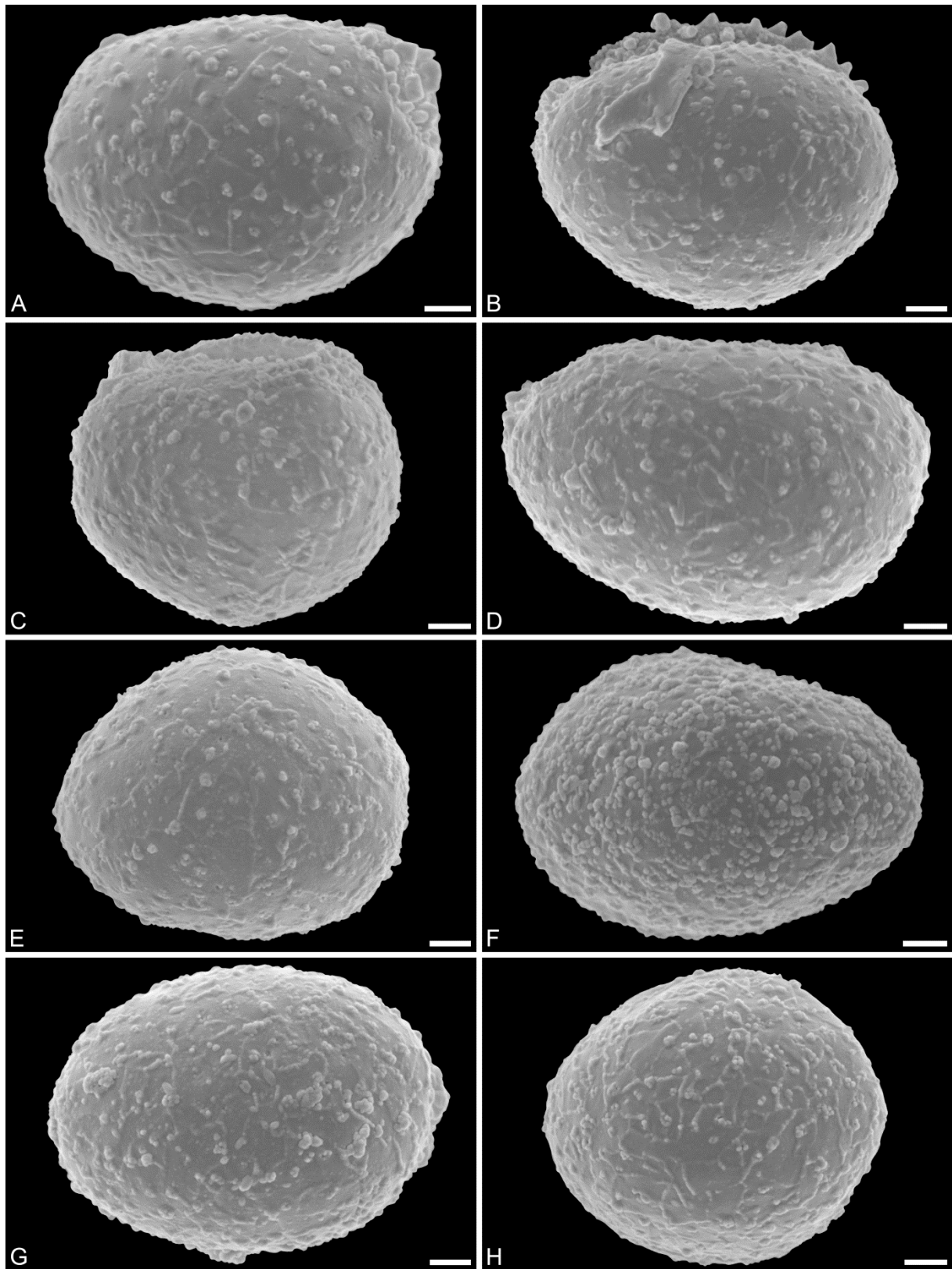


**Figure S12.** SEM micrographs of *Saururus chinensis* (Lour.) Baill. [WU 0039752]. IPUW 7513/130.

**A–F)** Pollen in distal polar view, showing sulcus and sulcus membrane.

**G–H)** Pollen in equatorial view.

Scale bars: 1 µm.

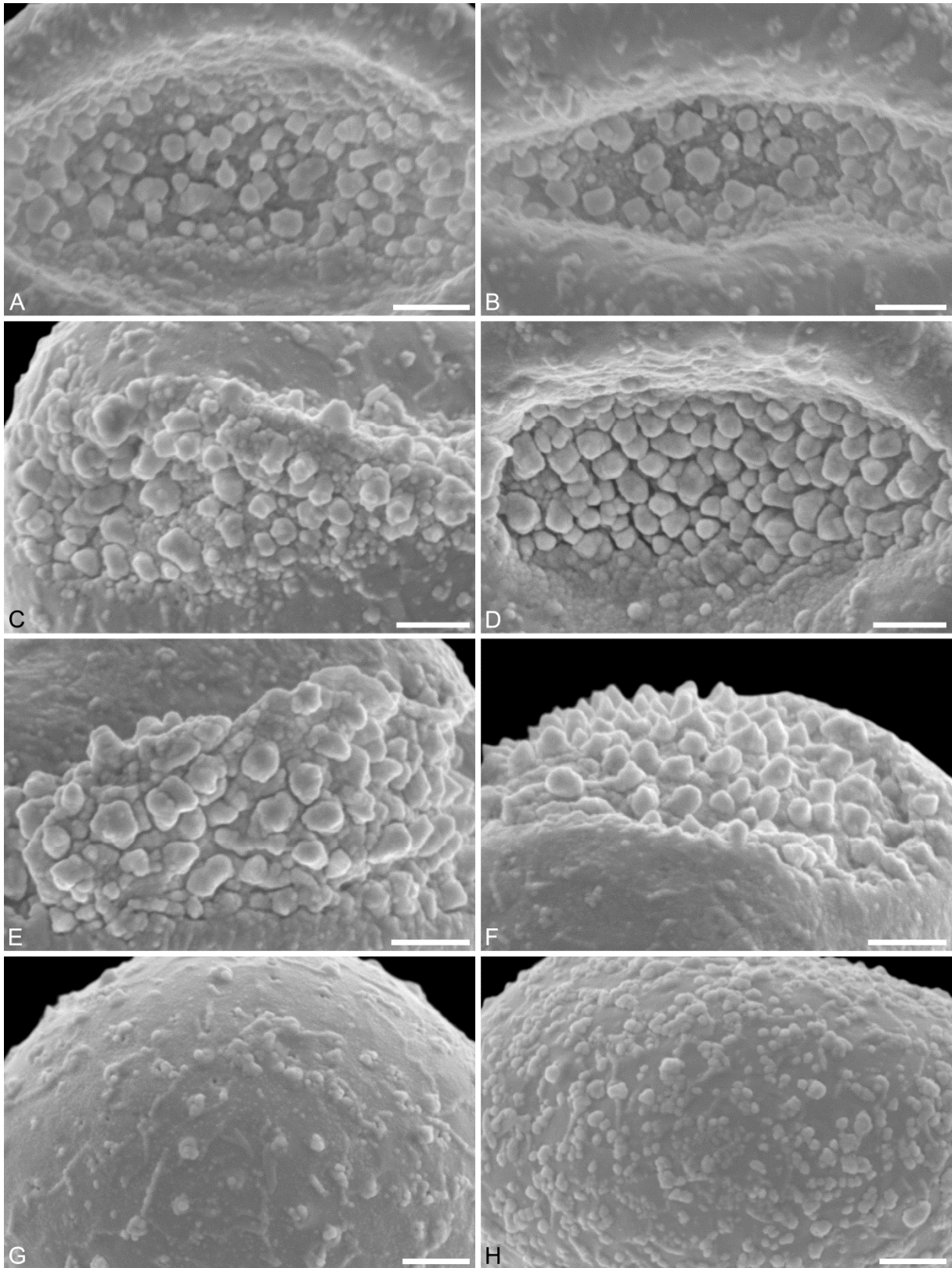


**Figure S13.** SEM micrographs of *Saururus chinensis* (Lour.) Baill. [WU 0039752]. IPUW 7513/130.

**A–C)** Pollen in equatorial view.

**D–H)** Pollen in proximal polar view.

Scale bars: 1  $\mu\text{m}$ .

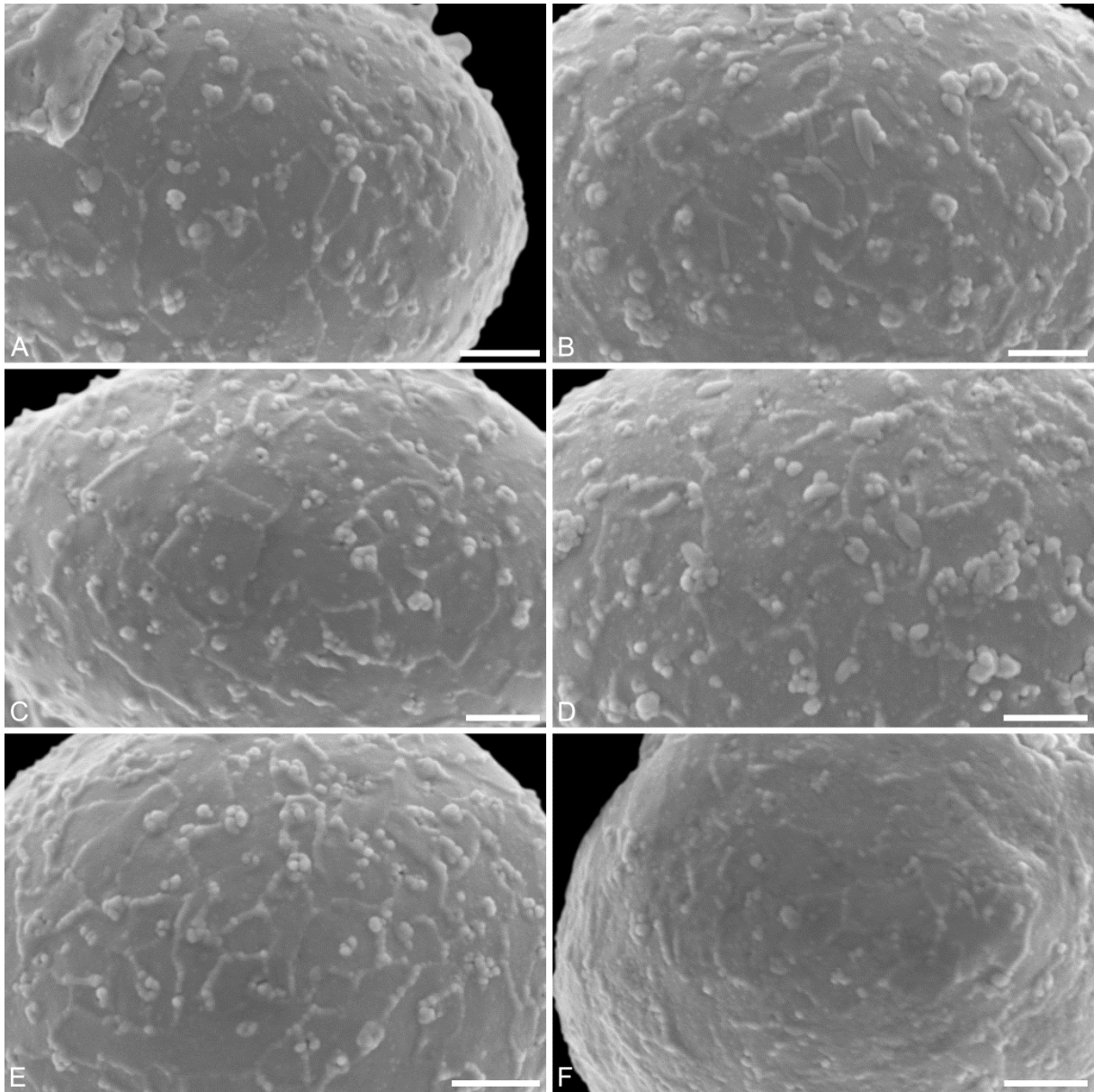


**Figure S14.** SEM micrographs of *Saururus chinensis* (Lour.) Baill. [WU 0039752]. IPUW 7513/130.

**A–F)** Close-ups of sulcus membrane.

**G–H)** Close-ups of sculpture on proximal side of pollen.

Scale bars: 1 µm.



**Figure S15.** SEM micrographs of *Saururus chinensis* (Lour.) Bail. [WU 0039752]. IPUW 7513/130.

**A–F)** Close-ups of sculpture on proximal side of pollen.

Scale bars: 1 µm.