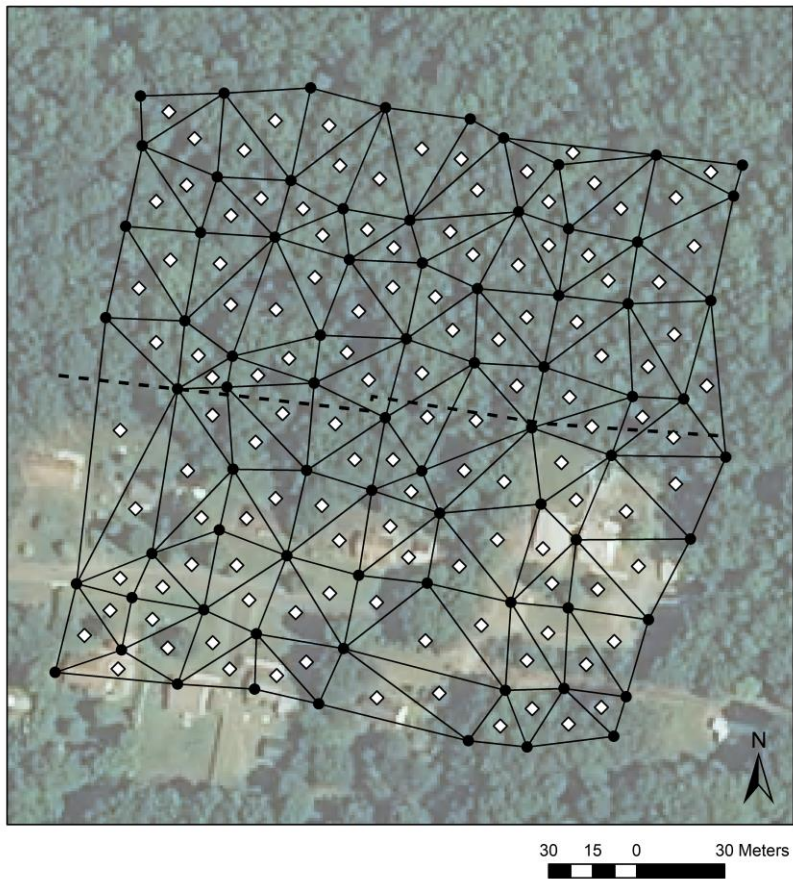


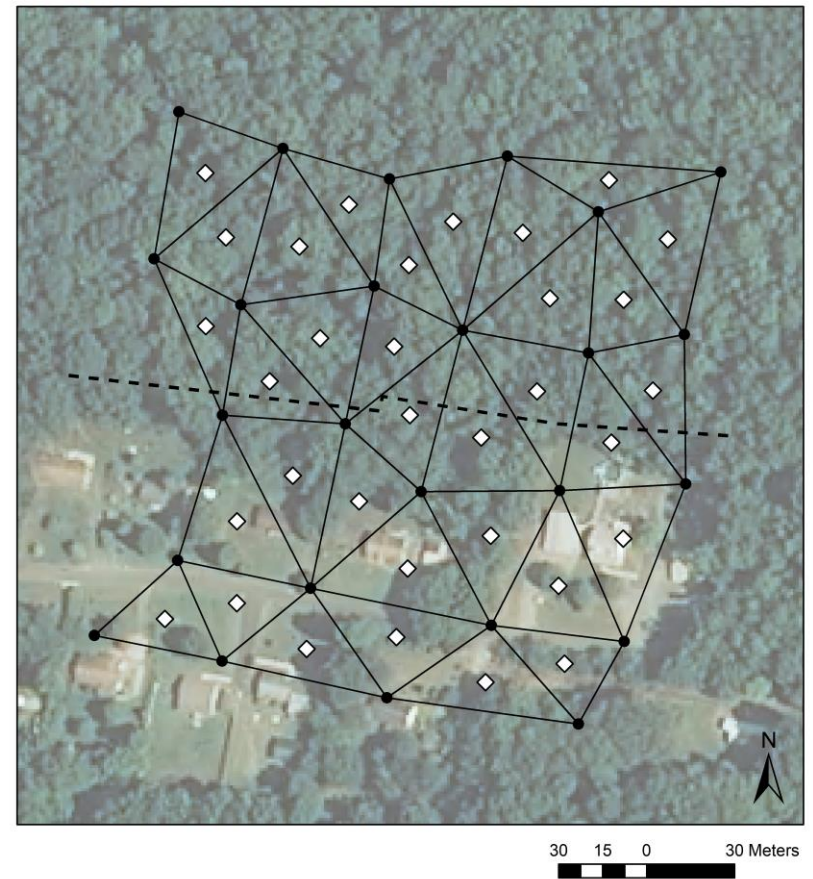
**Figure S1.** The Delaunay triangles (black lines) and their centroids (white diamonds) at each site at two spatial scales. Black dots are trap locations at the small scale and the centroids of trios of adjacent trap locations at the large scale. Edges are indicated by dashed black lines and correspond to the property lines between County-owned forest and private development.

A) Rural site

Small scale

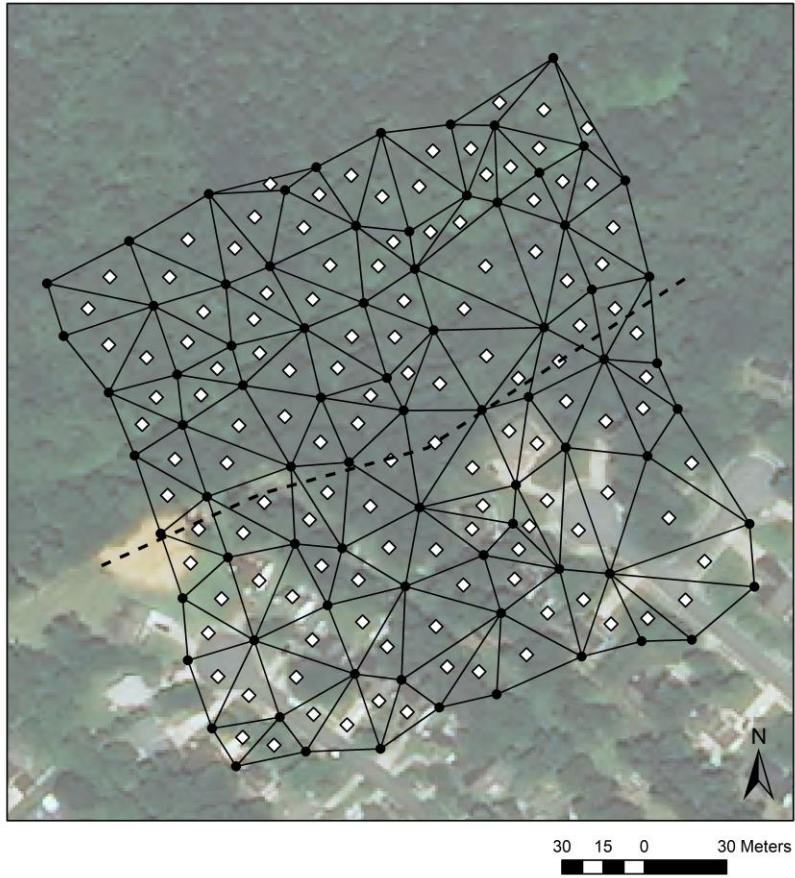


Large scale

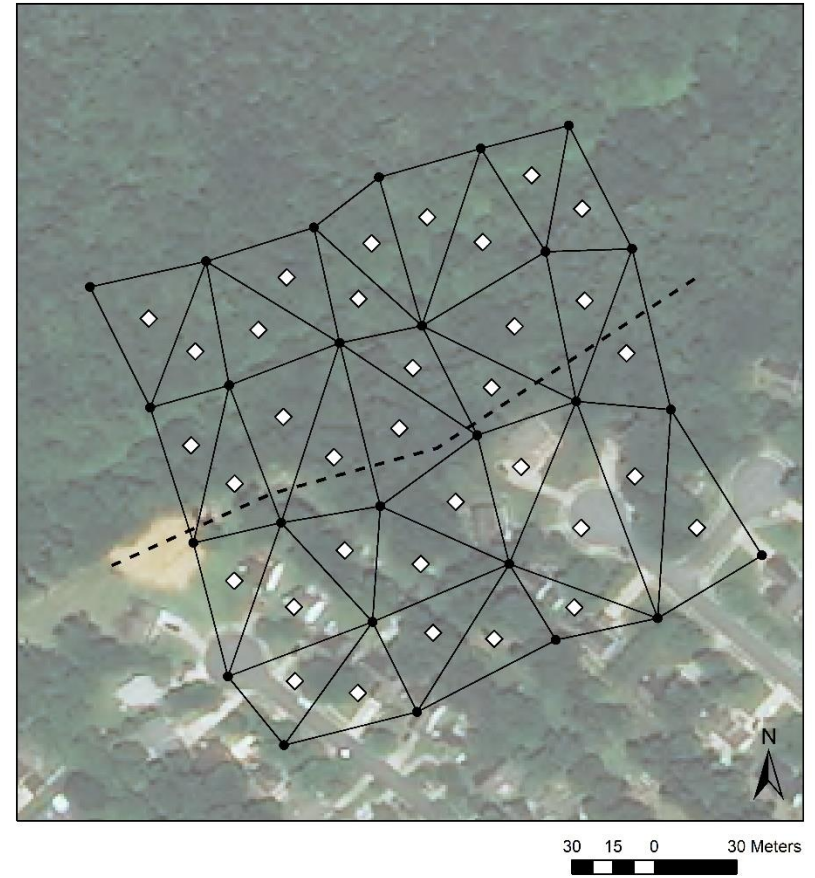


B) Suburban site

Small scale



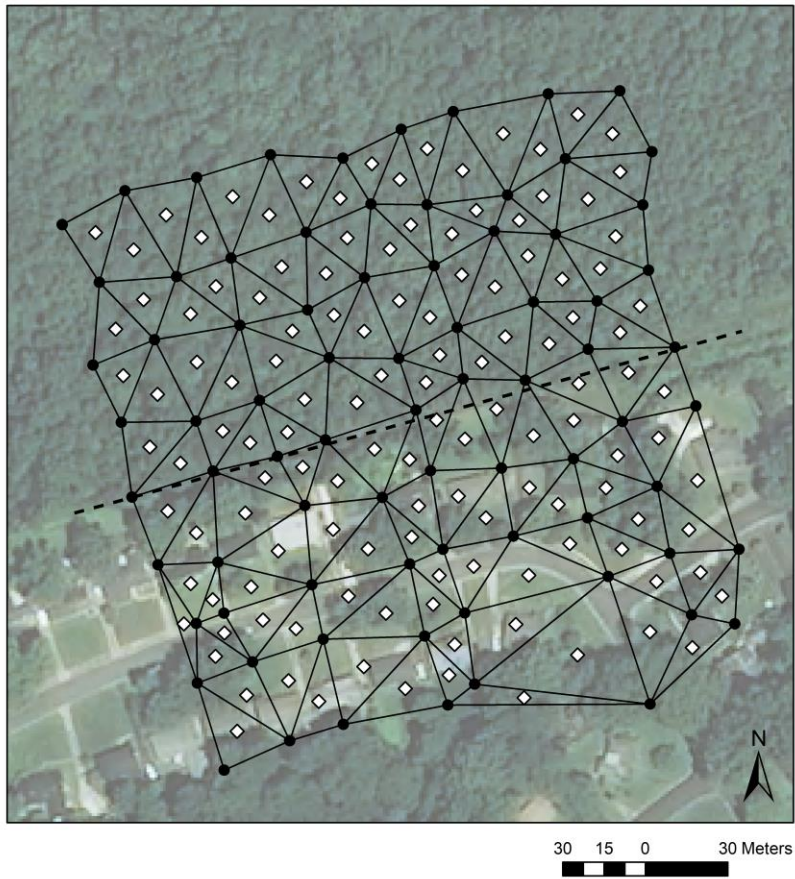
Large scale





C) Urban site

Small scale



Large scale

