

Figures S2-S92. Boundaries (yellow lines) and singletons (yellow stars) in environmental and ground beetle variables with one or more significant boundary statistics. Figures are named by site (rural, suburban, or urban), spatial scale (small or large), and variable. Black dots are trap locations at the small scale and the centroids of trios of adjacent trap locations at the large scale and are labeled with variable values (temperature in degrees Celsius; humidity as a percentage; microrelief and slope as ordinal indices; leaf litter depth in cm; covers as percentages; all environmental variables as a standardized average of individual variables; abundances and richnesses as numbers of individuals and species, respectively, per trapping period; evennesses as Berger-Parker indices; missing values indicated by -9999). Edges are indicated by black lines and correspond to the property lines between County-owned forest and private development. Beetle community matrices were analyzed using raw abundances and species abundances weighted by the inverse of the species' proportion of total abundance at the site.

Figure S2. Rural_small_Temperature

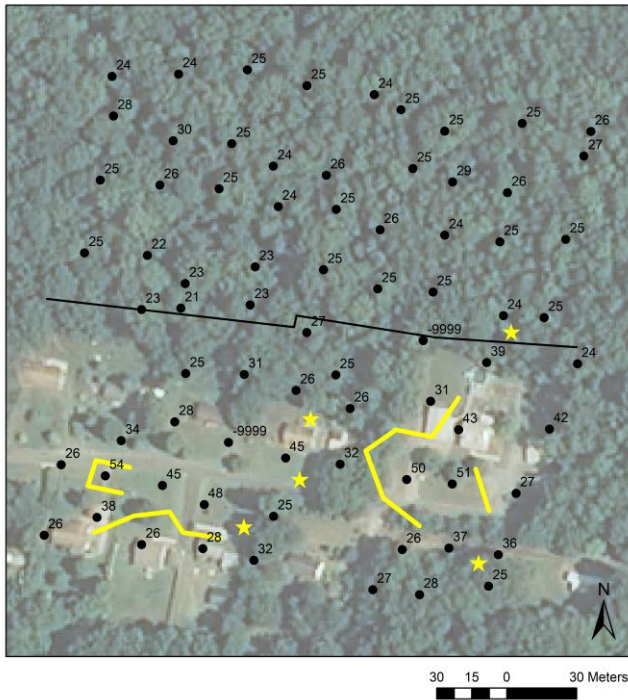


Figure S3. Rural_small_Leaf litter depth

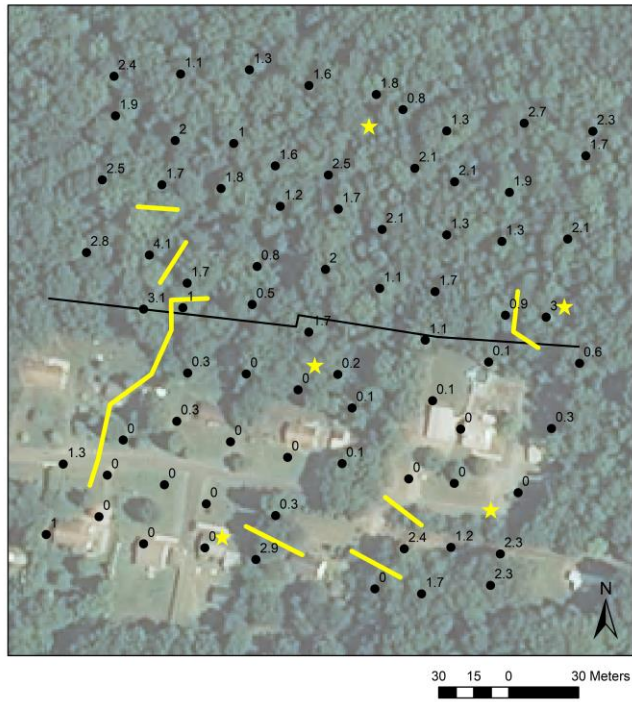


Figure S4. Rural_small_Forb cover

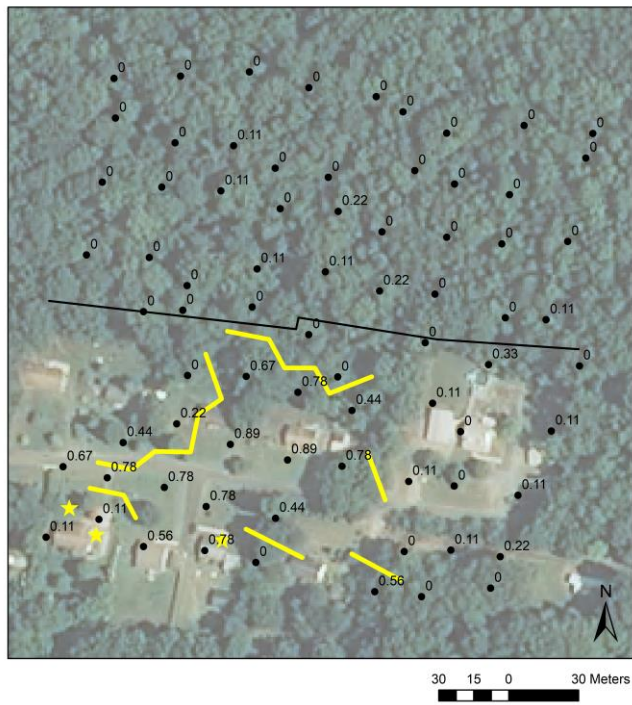


Figure S5. Rural_small_Rock cover

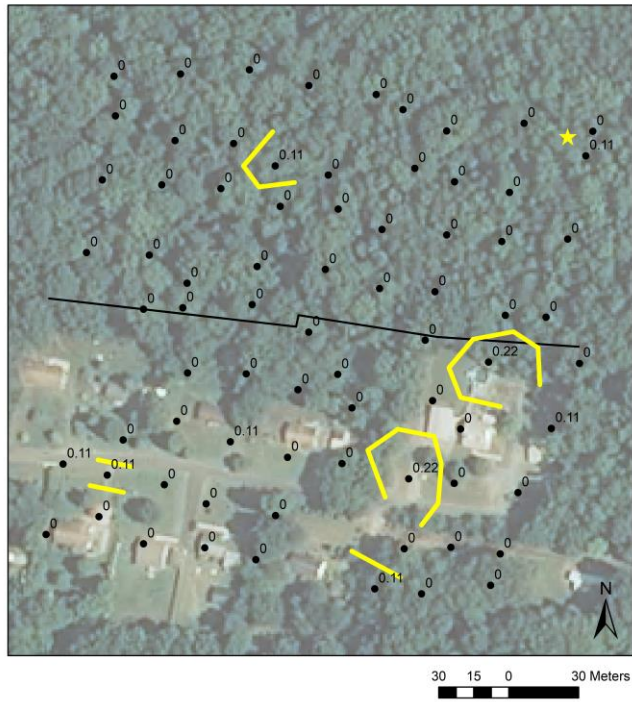


Figure S6. Rural_small_Vine cover

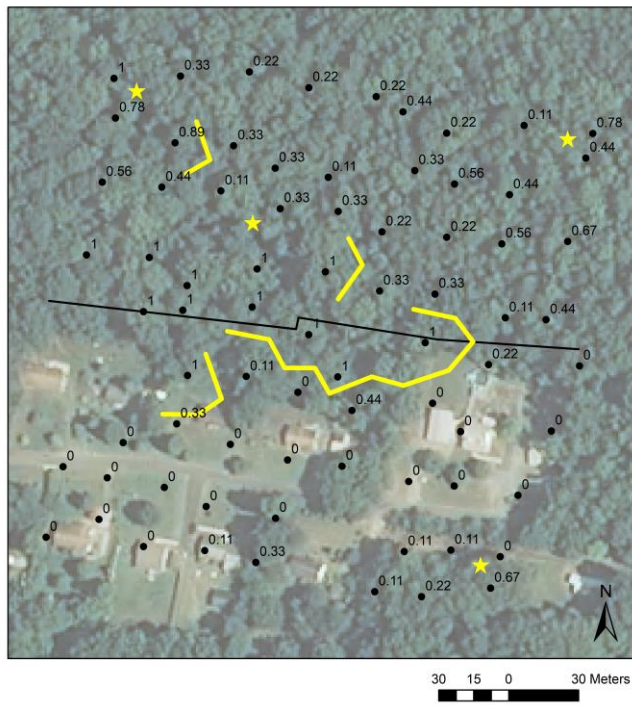


Figure S7. Rural_small_Coarse woody debris cover

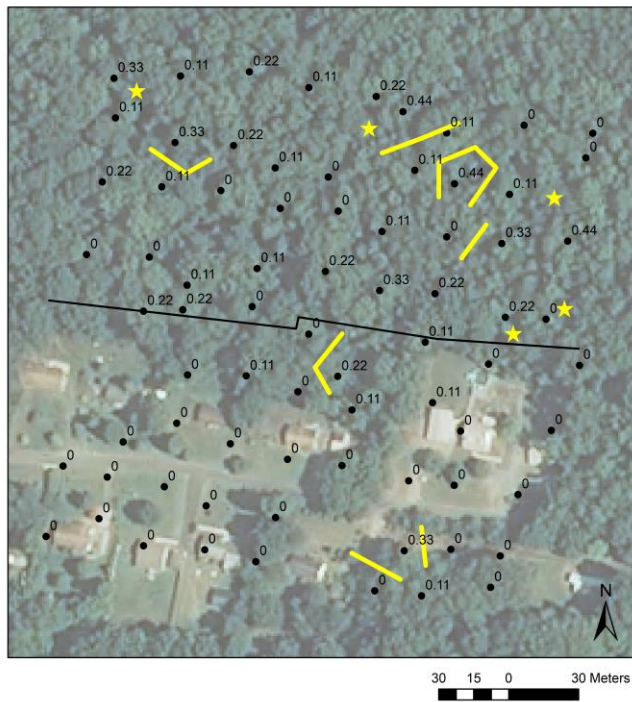


Figure S8. Rural_small_All environmental variables

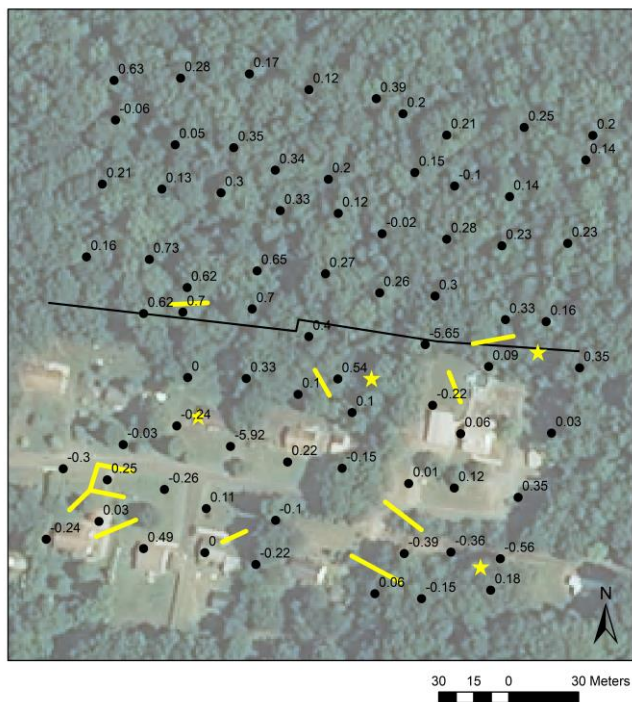


Figure S9. Rural_small_All species

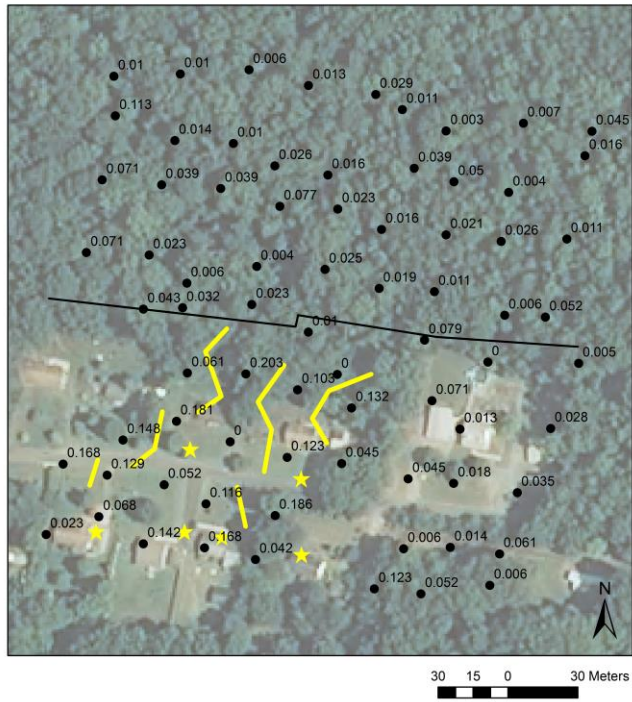


Figure S10. Rural_small_Total evenness

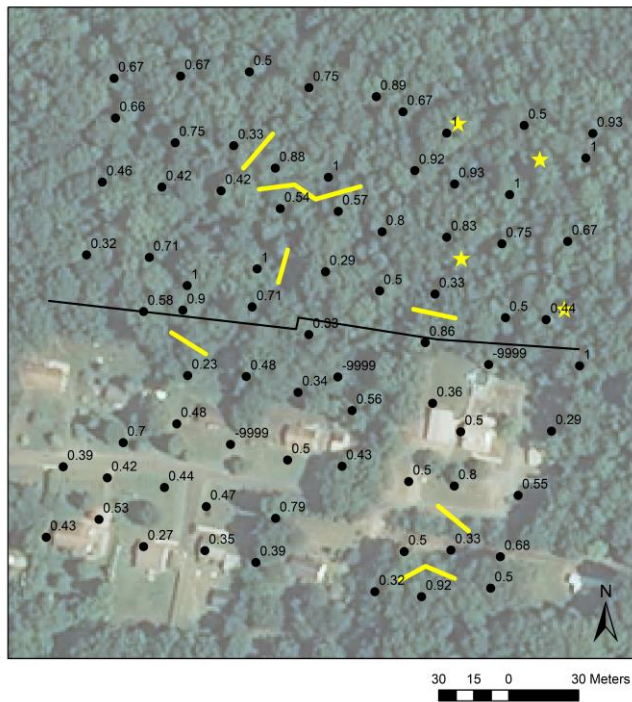


Figure S15. Rural_large_Slope

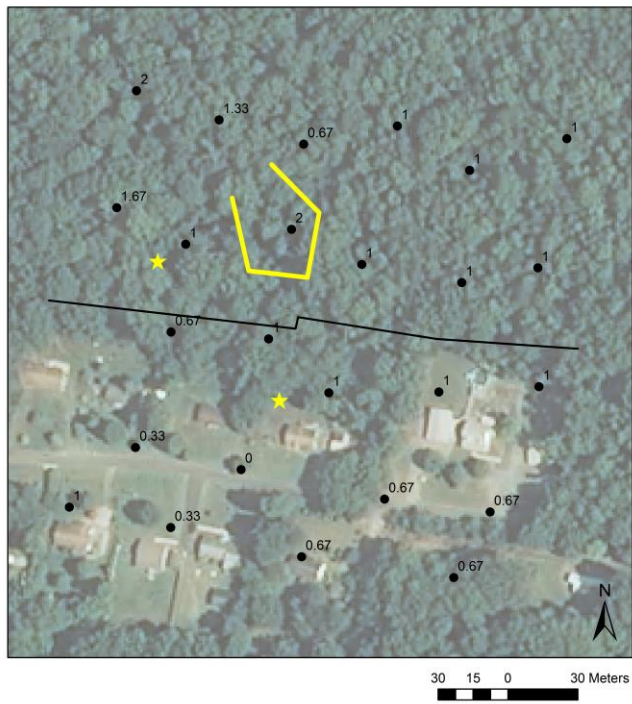


Figure S16. Rural_large_Temperature



Figure S17. Rural_large_Bare ground cover

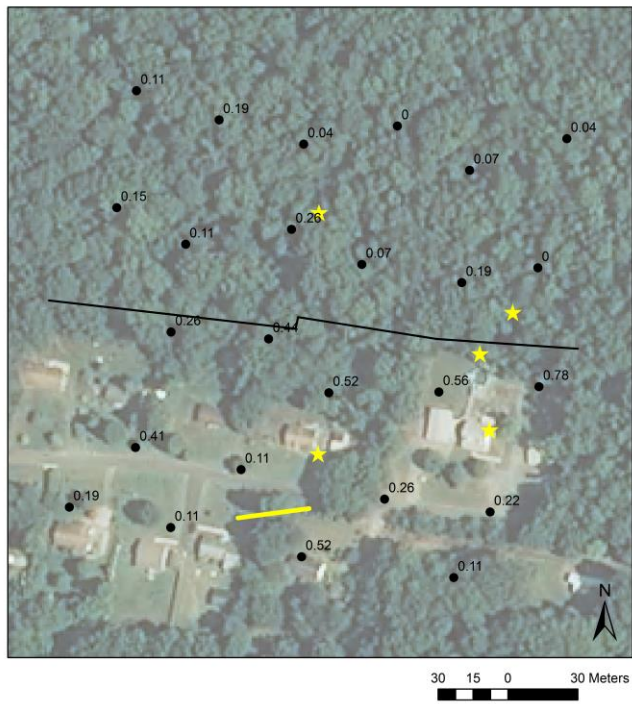


Figure S18. Rural_large_Forb cover

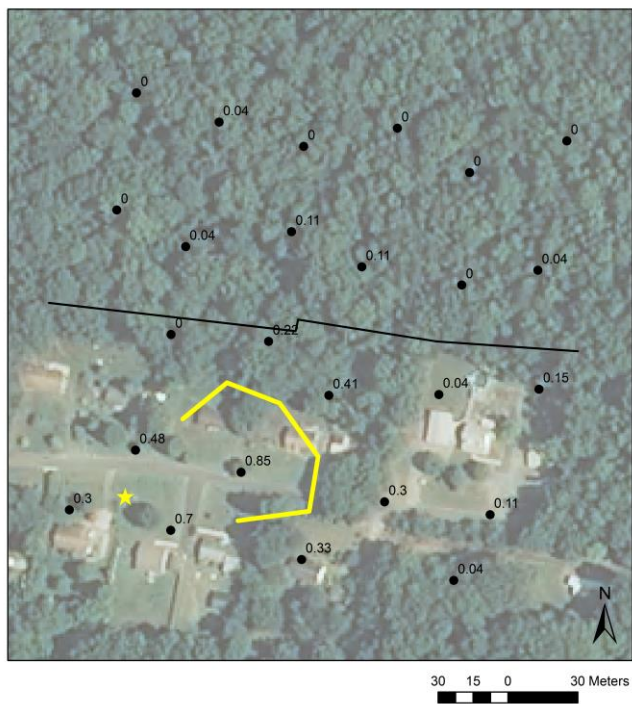


Figure S19. Rural_large_Leaf litter depth

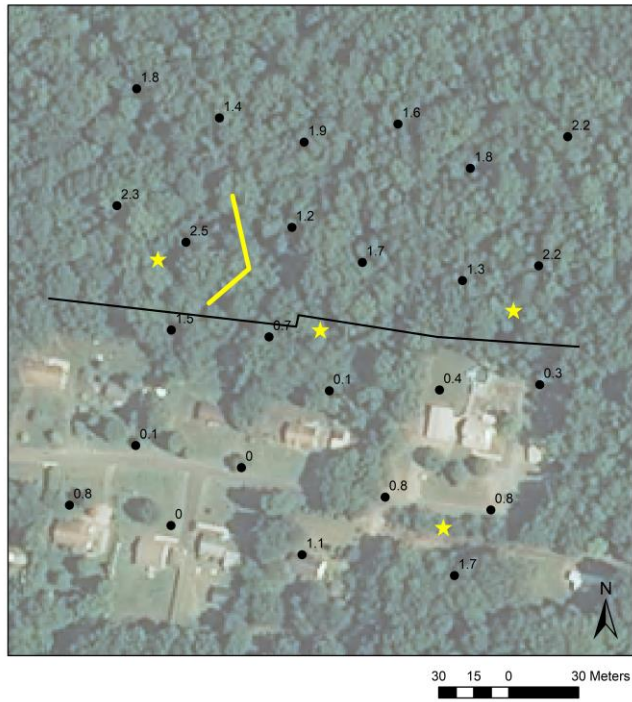


Figure S20. Rural_large_Generalist richness

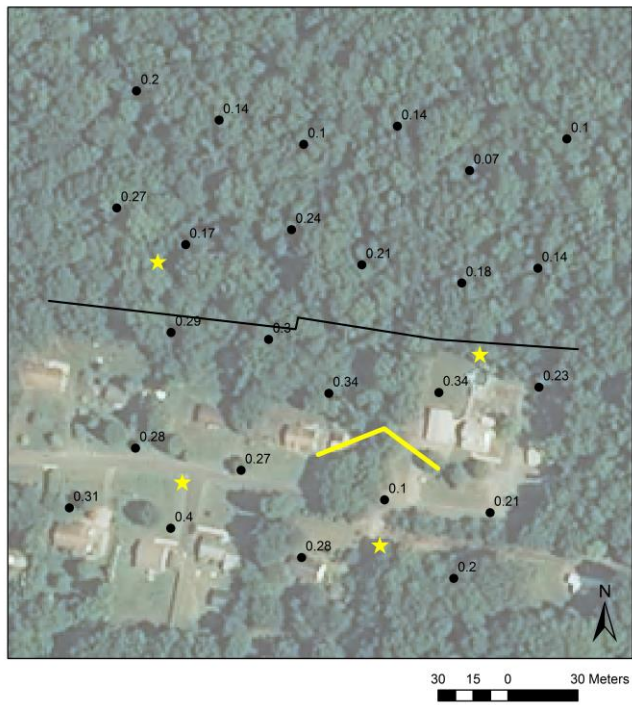


Figure S21. Rural_large_Total evenness

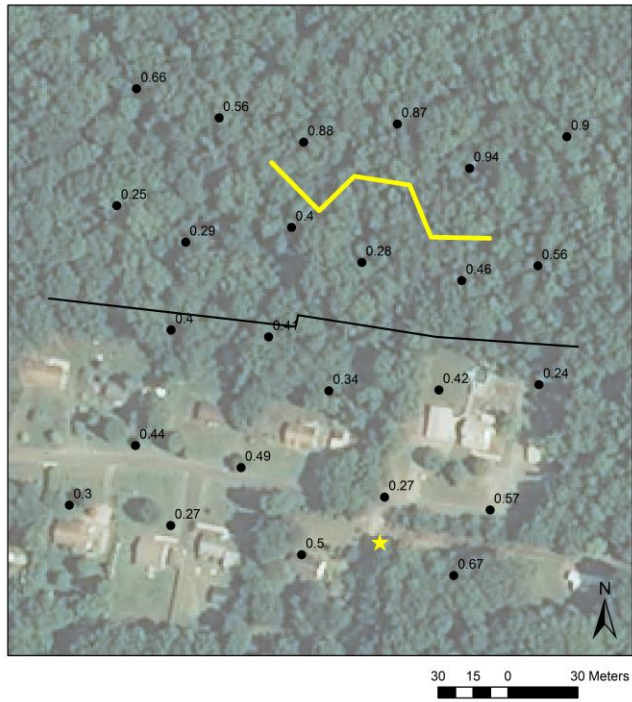


Figure S22. Rural_large_All species

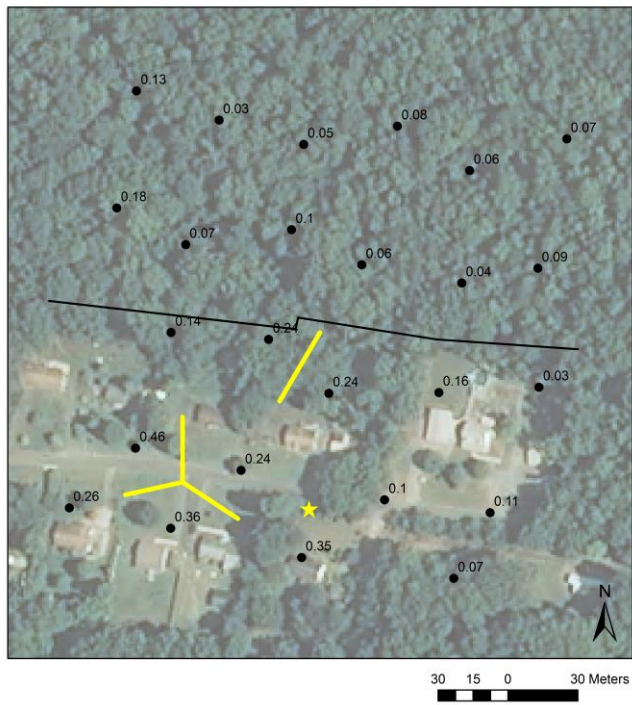


Figure S23. Rural_large_All species weighted

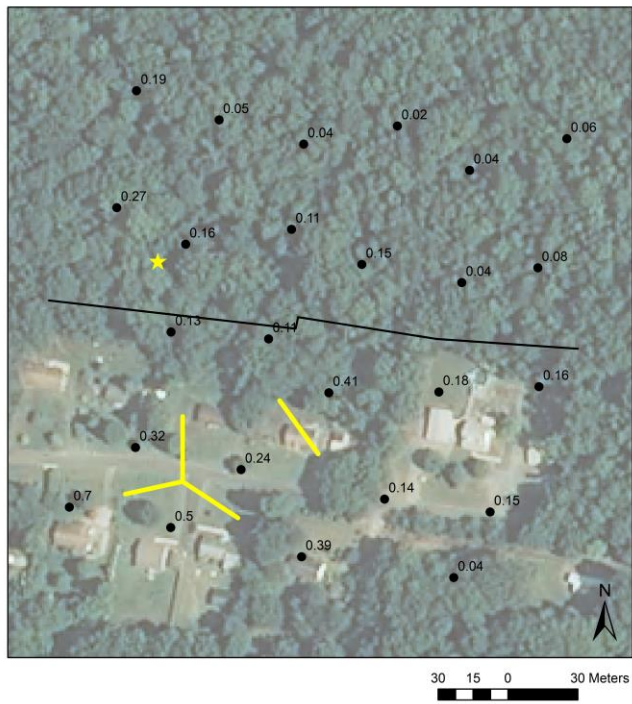


Figure S24. Rural_large_Generalist species

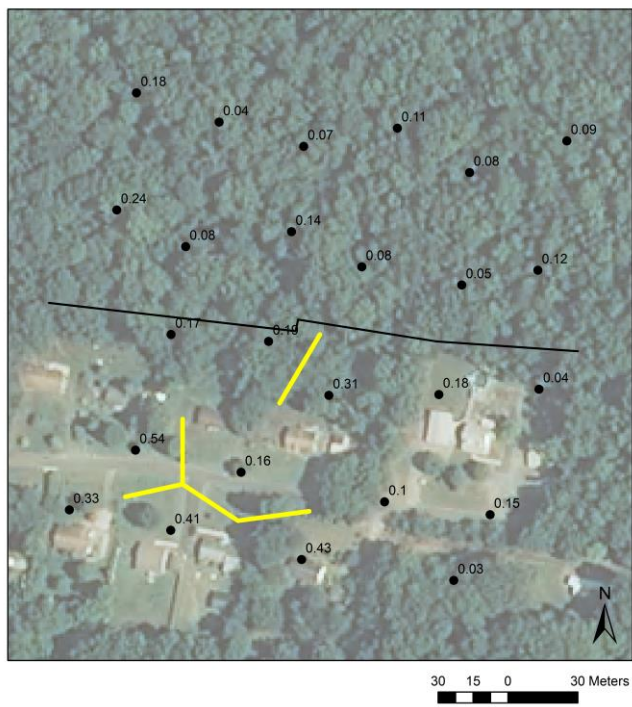


Figure S27. Rural_large_Anisodactylus rusticus

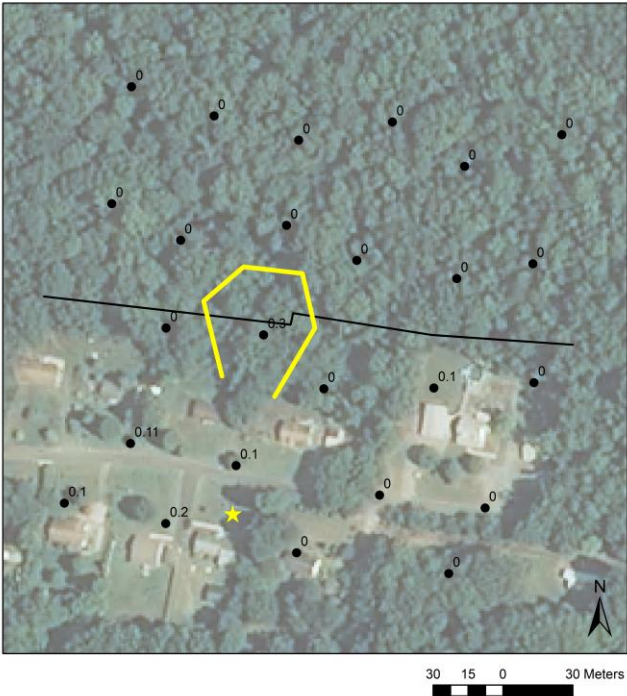


Figure S28. Rural_large_Chlaenius prasinus

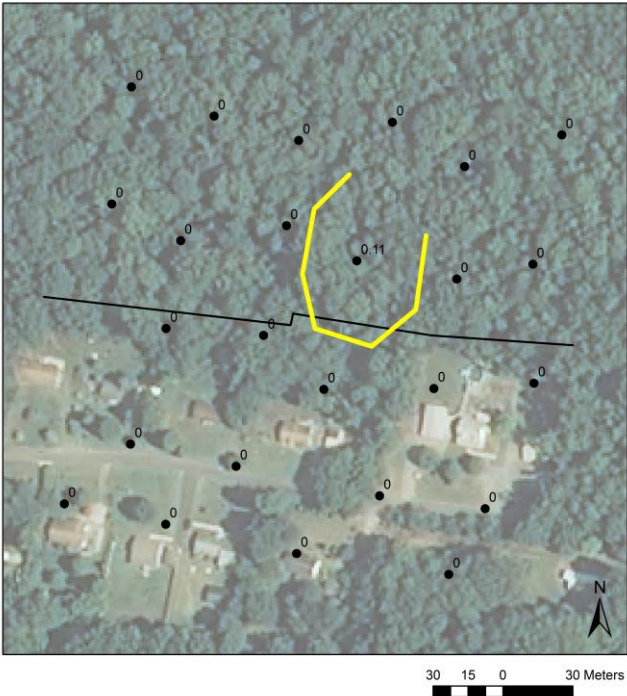


Figure S31. Suburban_small_Slope

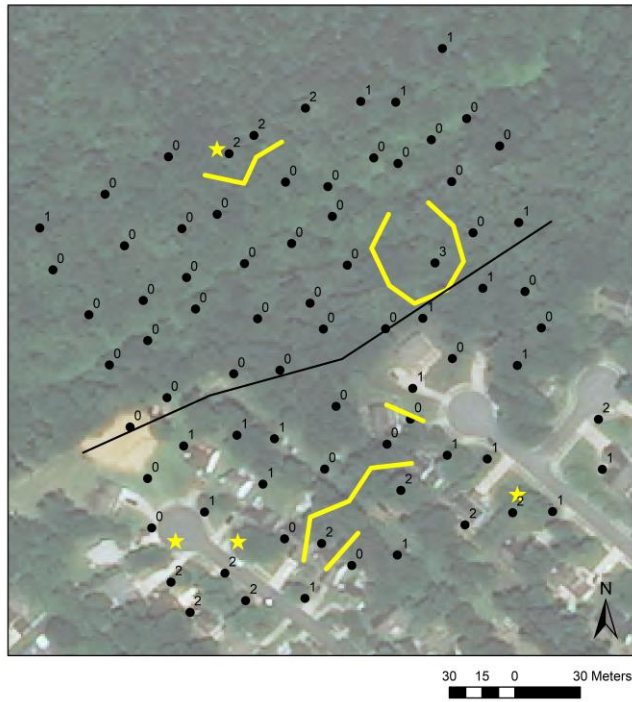


Figure S32. Suburban_small_Leaf litter depth

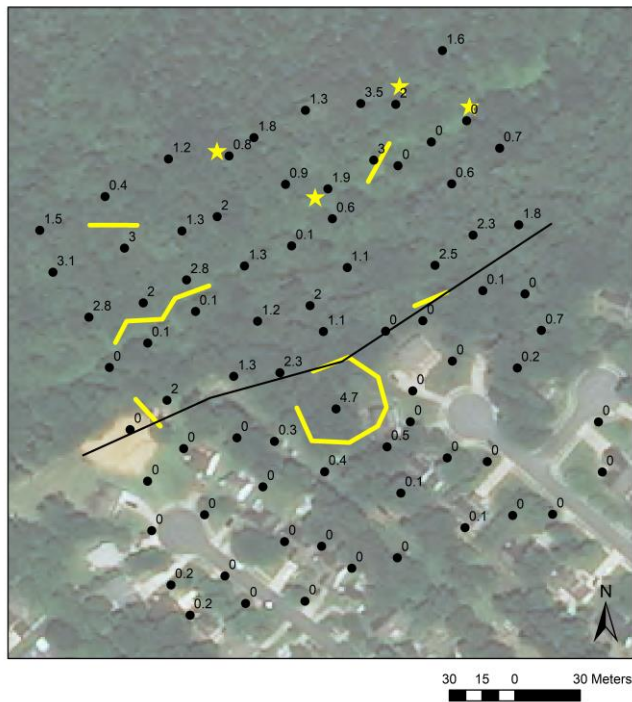


Figure S33. Suburban_small_Grass cover

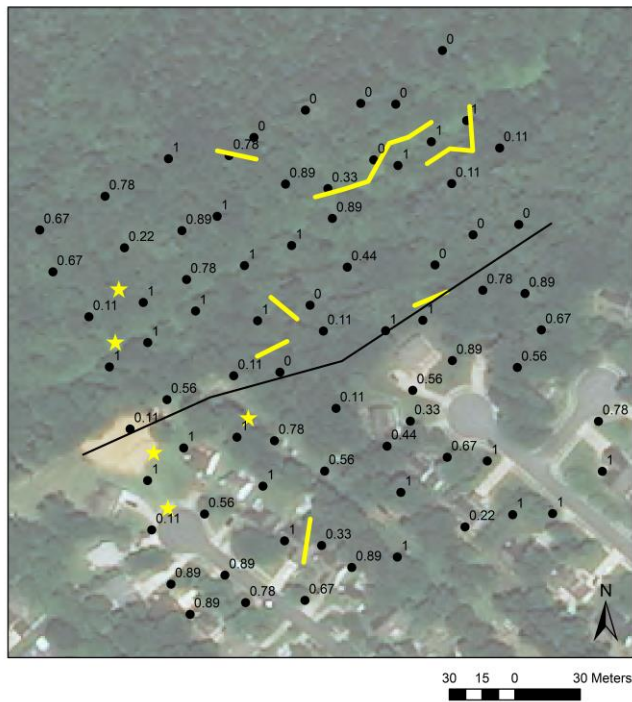


Figure S34. Suburban_small_Creeping forb cover

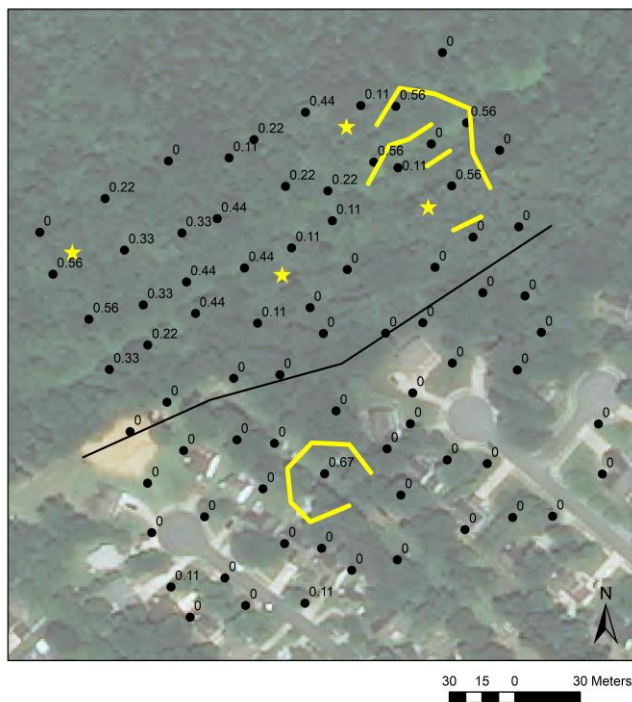


Figure S35. Suburban_small_Shrub cover

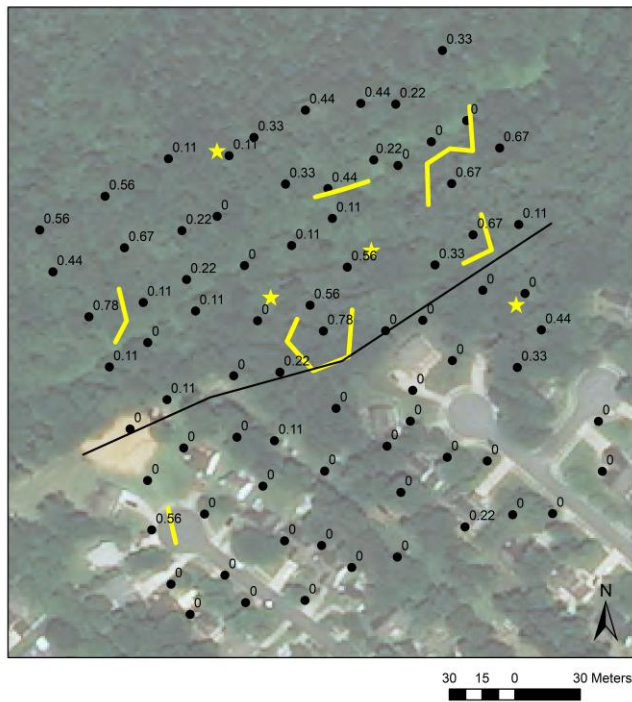


Figure S36. Suburban_small_Moss cover

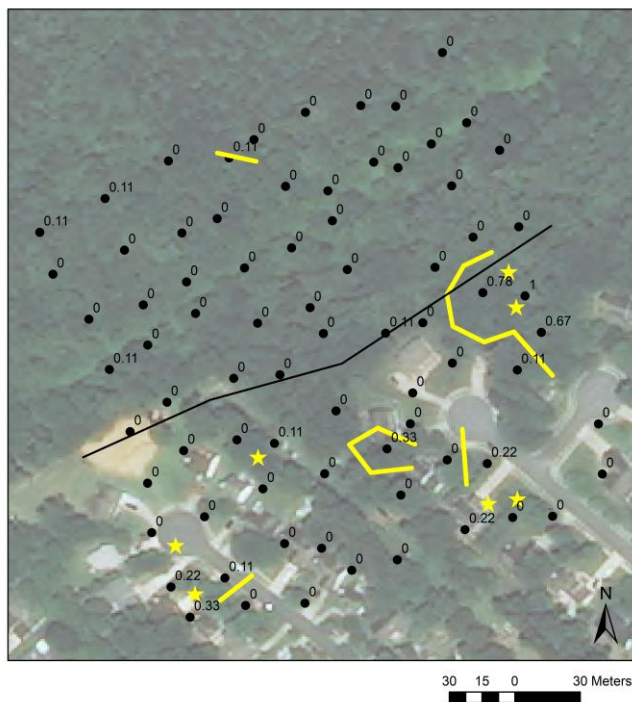


Figure S37. Suburban_small_Total evenness

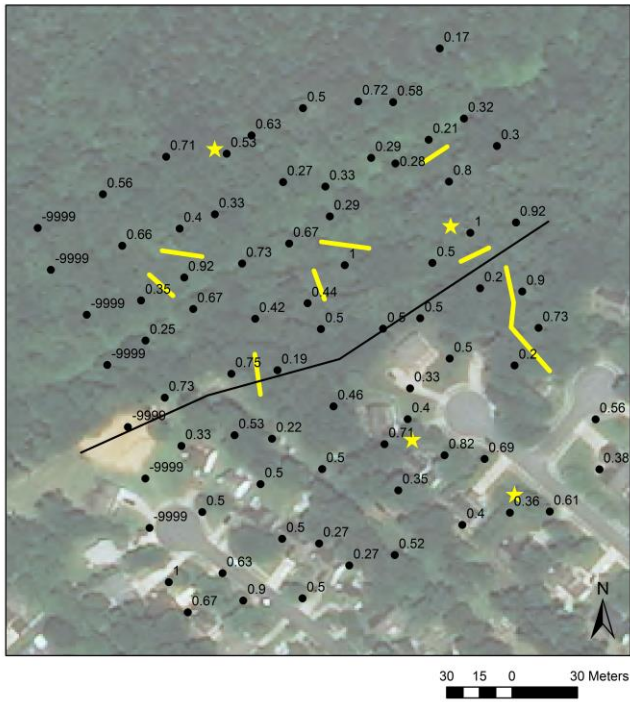


Figure S38. Suburban_small_Generalist evenness

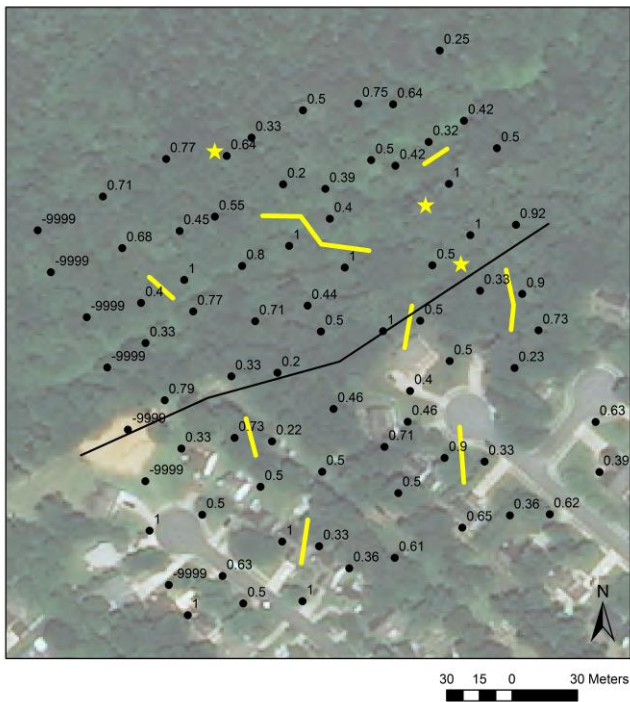


Figure S39. Suburban_small_Open species

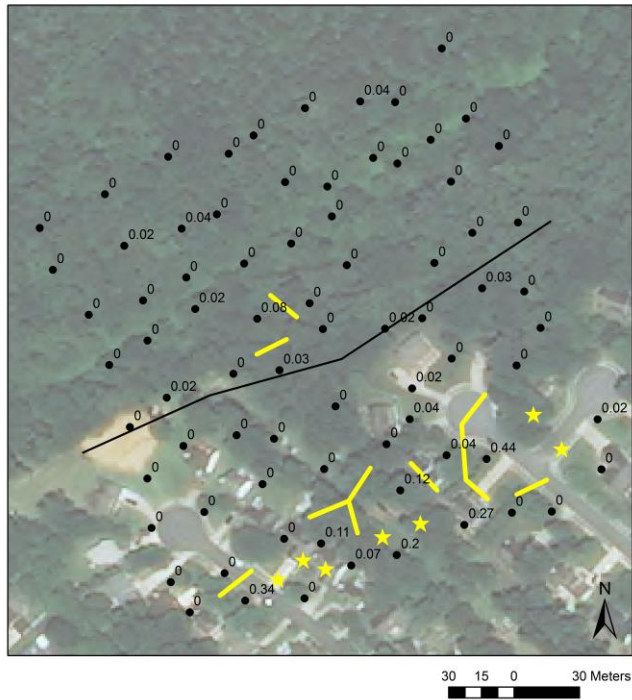


Figure S40. Suburban_small_Generalist species weighted

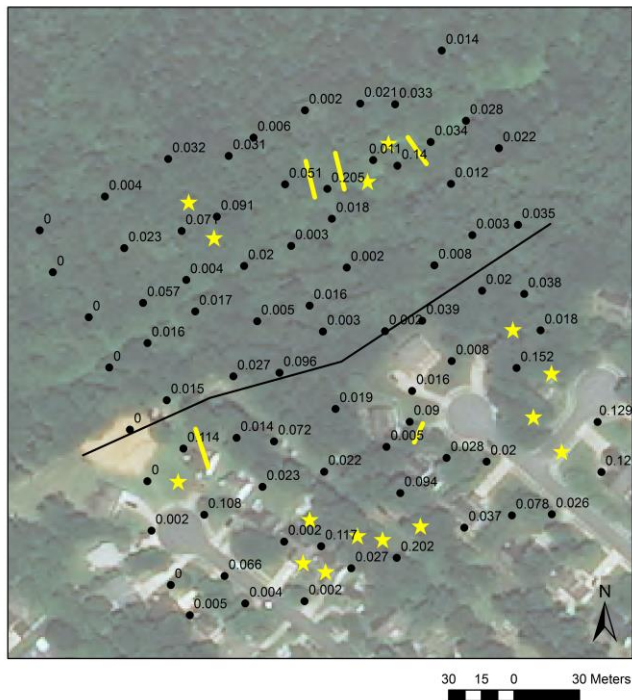


Figure S41. Suburban_small_Amara aenea

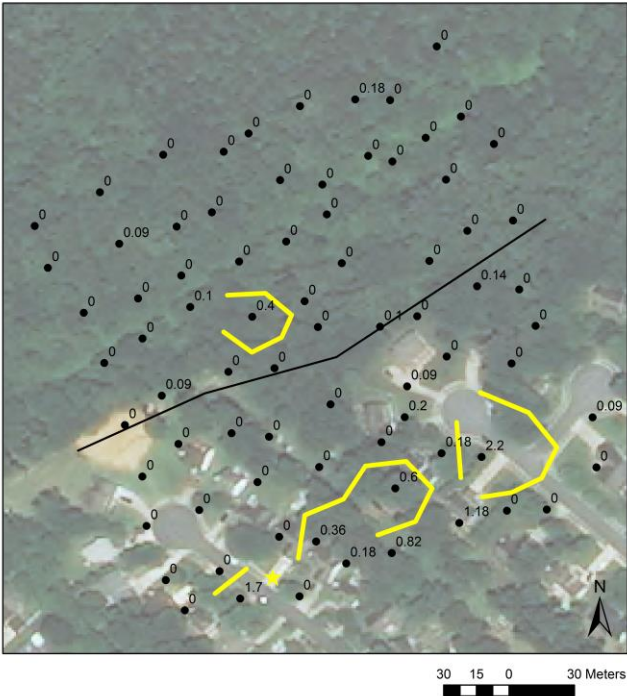


Figure S42. Suburban_small_Anisodactylus dulcicollis

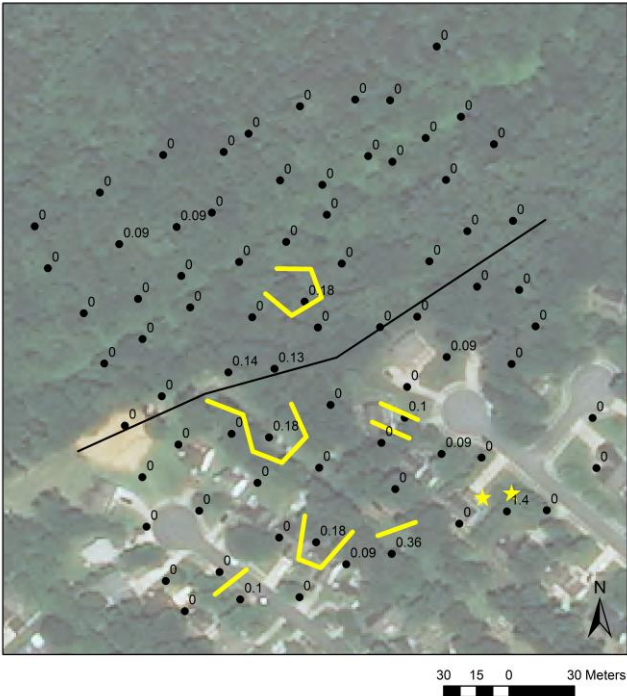


Figure S43. Suburban_small_Dicaelus dilatatus

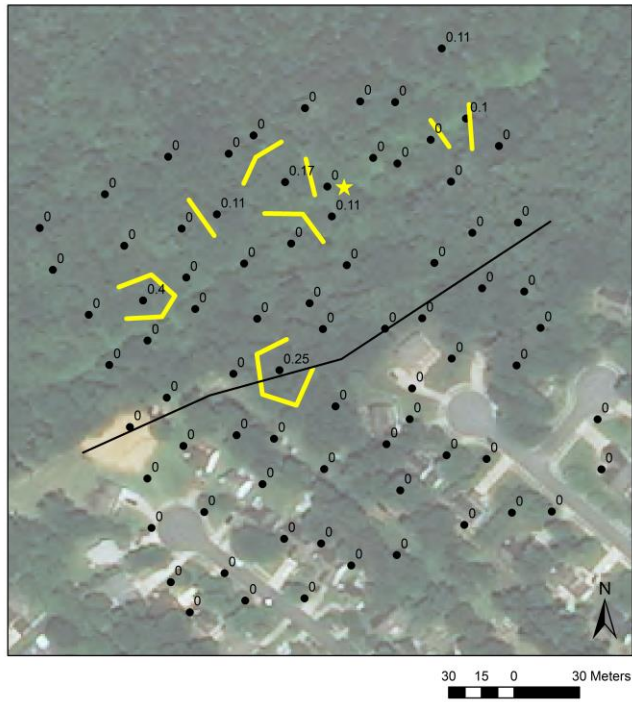


Figure S44. Suburban_small_Pterostichus sculptus

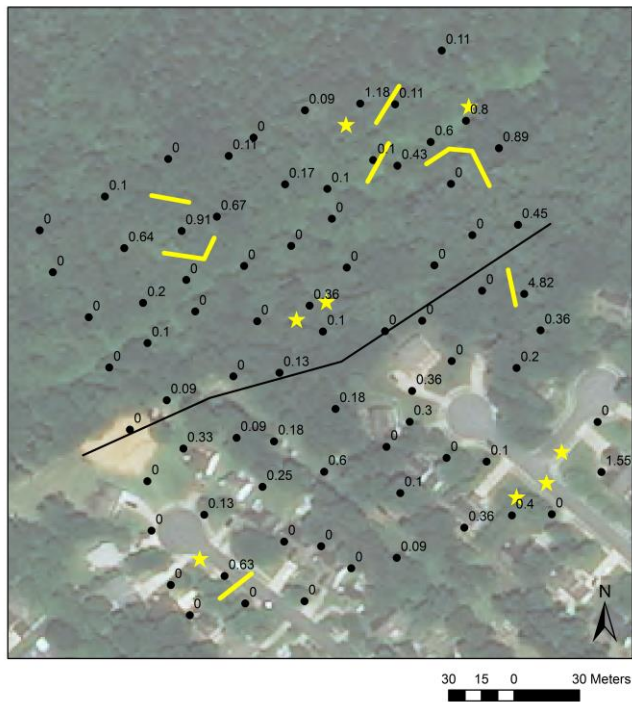


Figure S45. Suburban_small_Scarites subterraneus

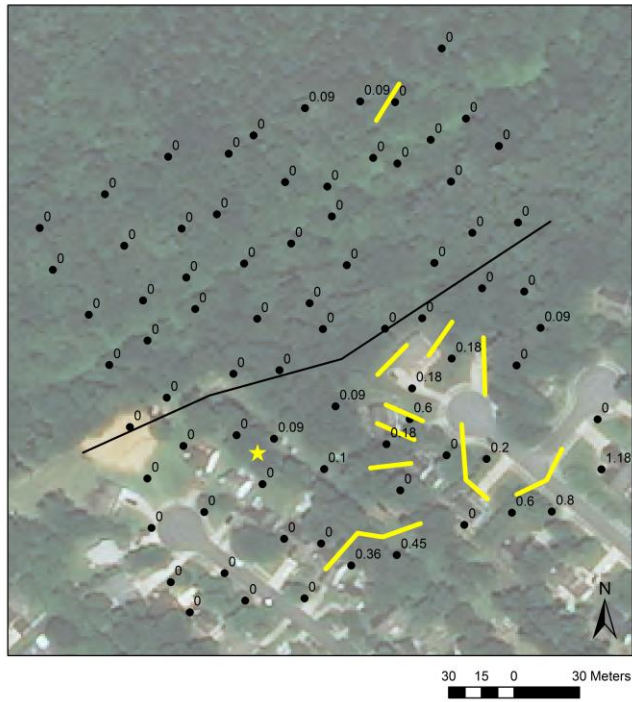


Figure S46. Suburban_large_Microrelief

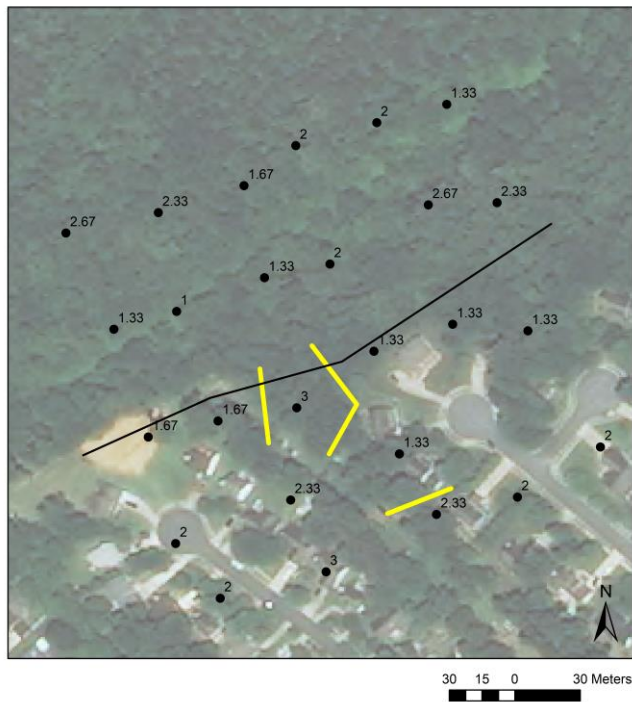


Figure S47. Suburban_large_Canopy cover

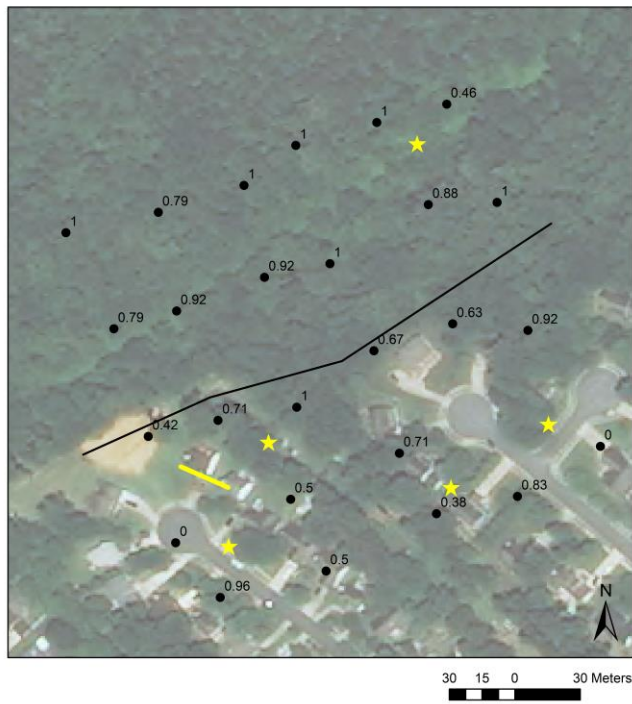


Figure S48. Suburban_large_Vine cover

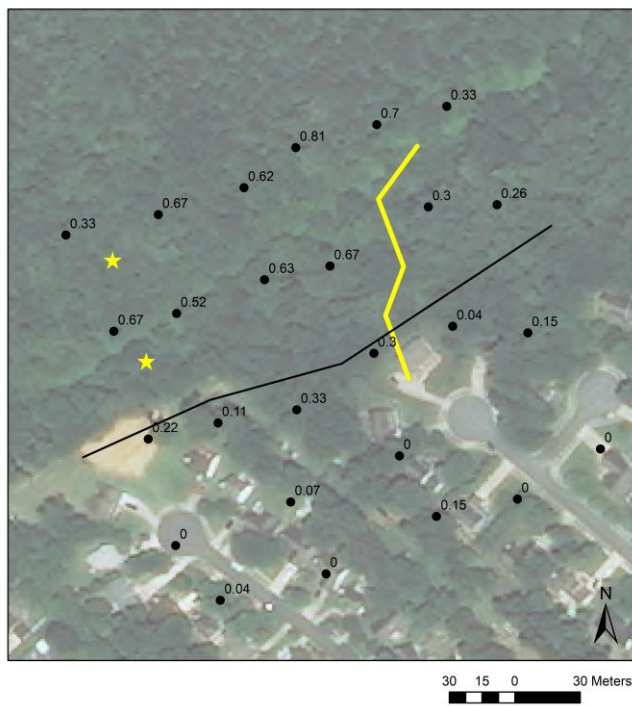


Figure S51. Suburban_large_All species

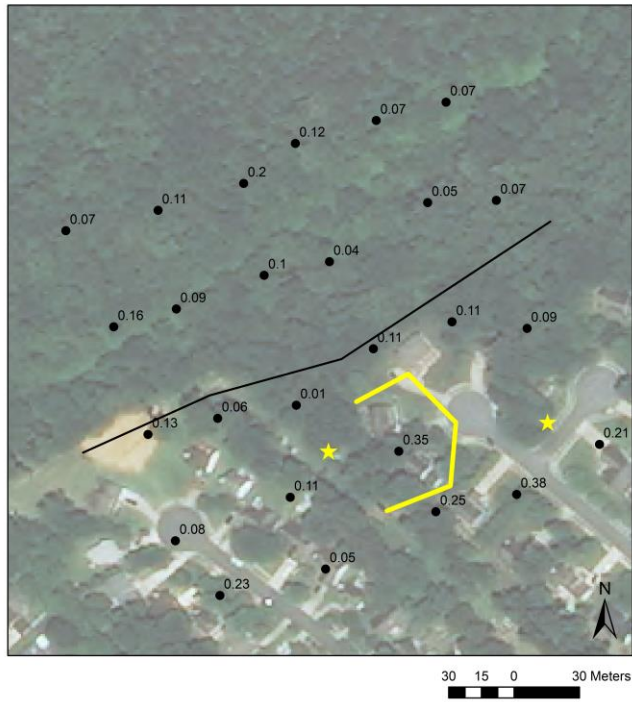


Figure S52. Suburban_large_All species weighted

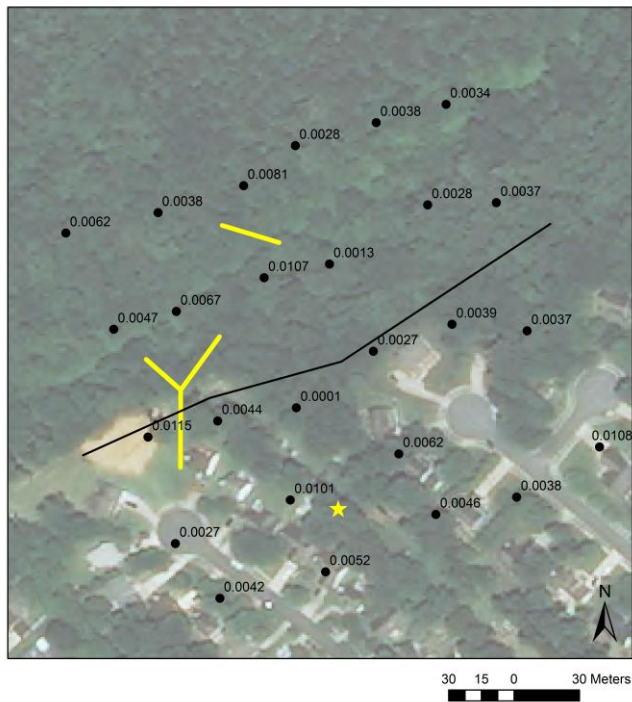


Figure S53. Suburban_large_Open species

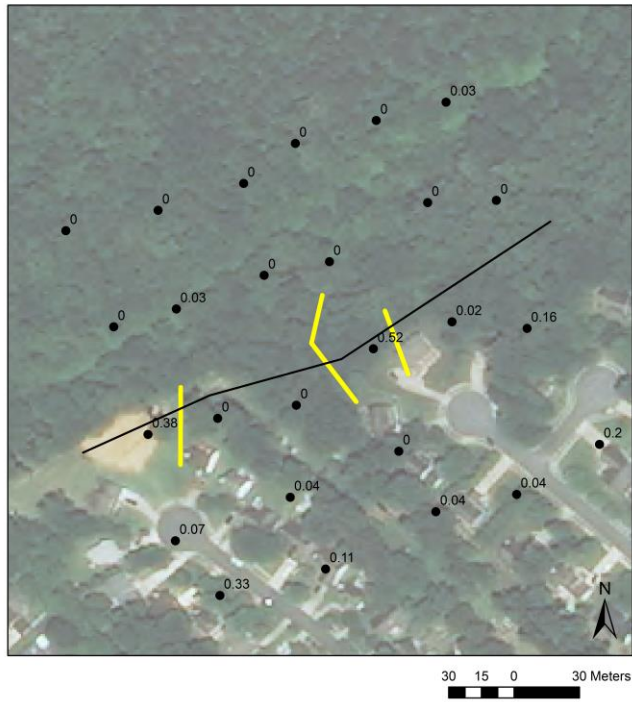


Figure S54. Suburban_large_Open species weighted

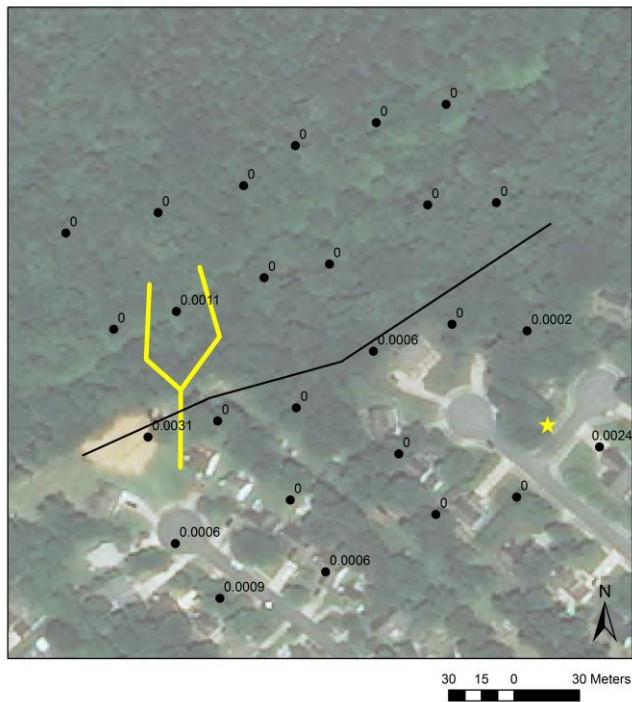


Figure S57. Suburban_large_Olisthopus parmatius

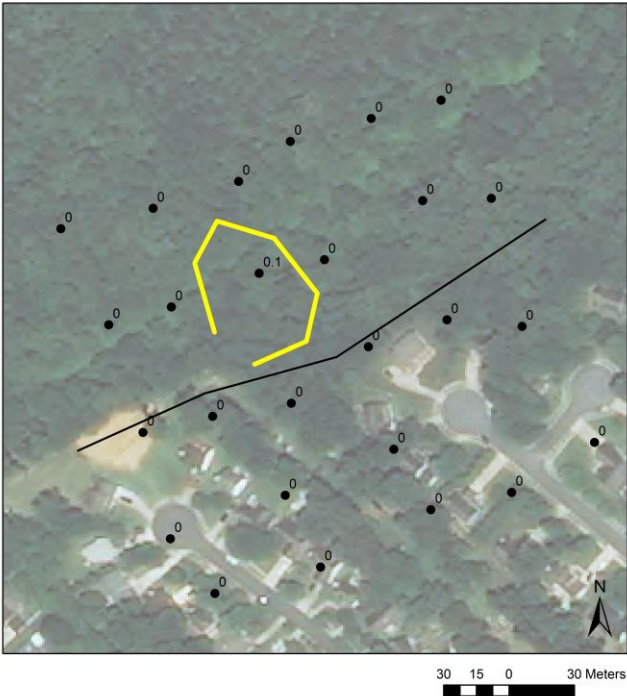


Figure S58. Suburban_large_Scarites quadriceps

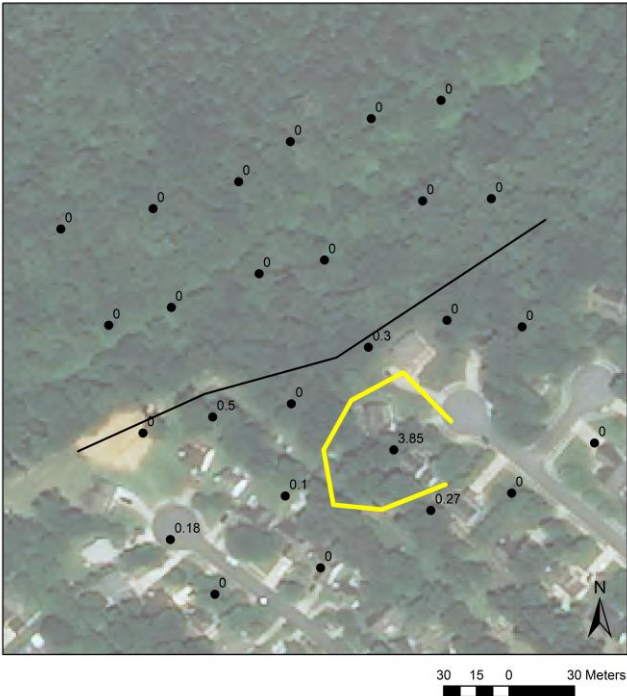


Figure S59. Suburban_large_Scarites subterraneus

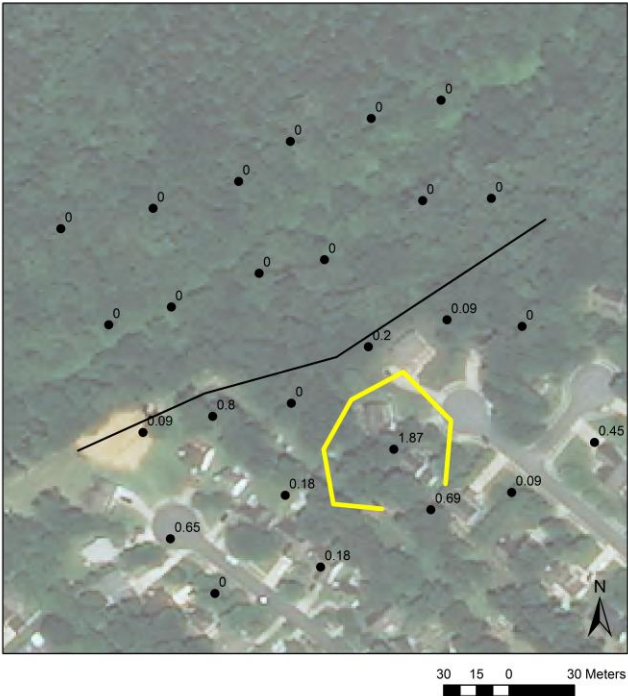


Figure S60. Suburban_large_Stenolophus rotundatus

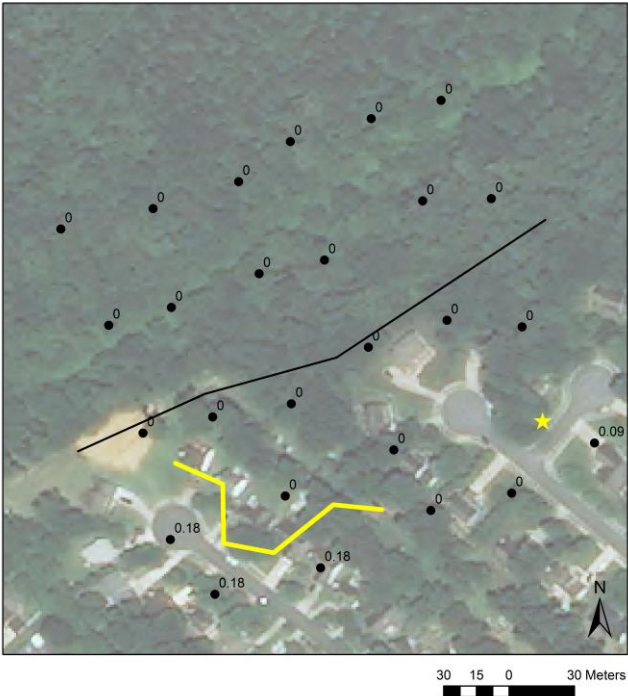


Figure S61. Urban_small_Temperature

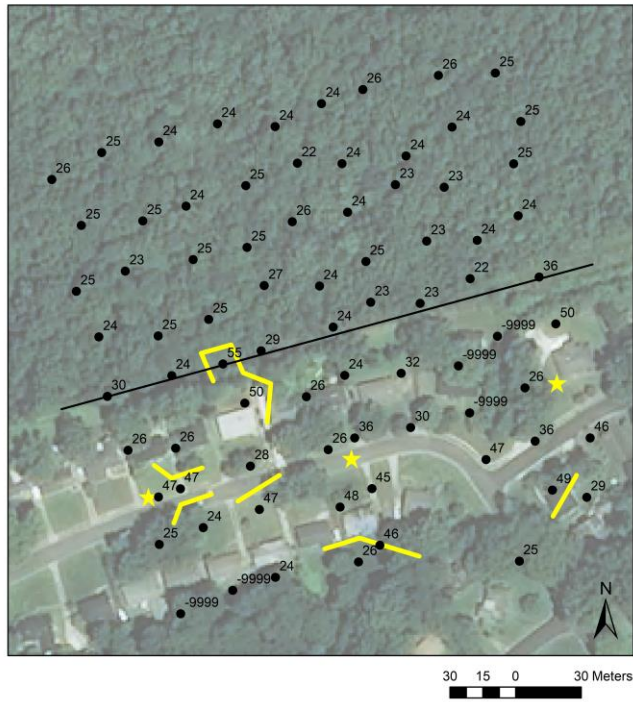


Figure S62. Urban_small_Humidity

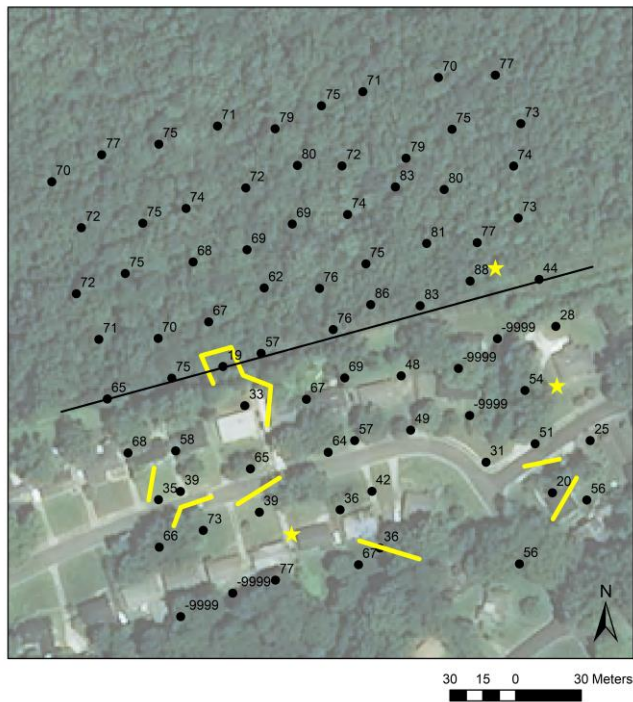


Figure S63. Urban_small_Canopy cover

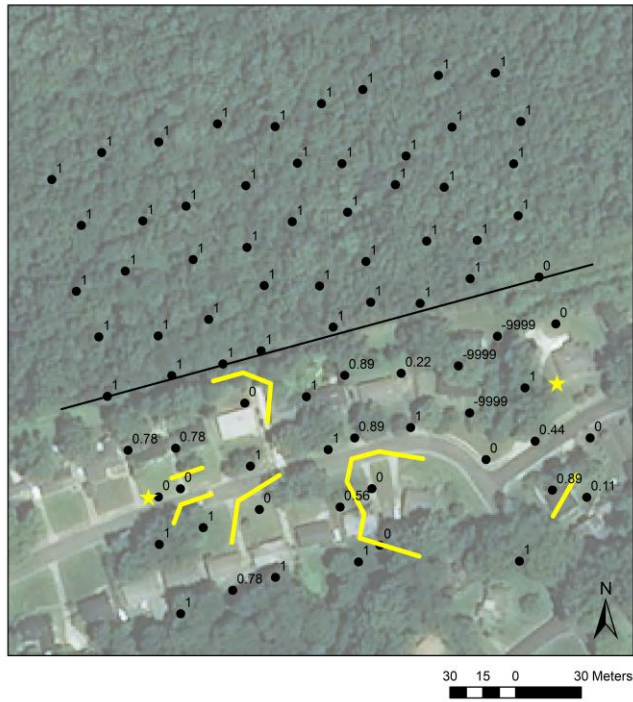


Figure S64. Urban_small_Forb cover

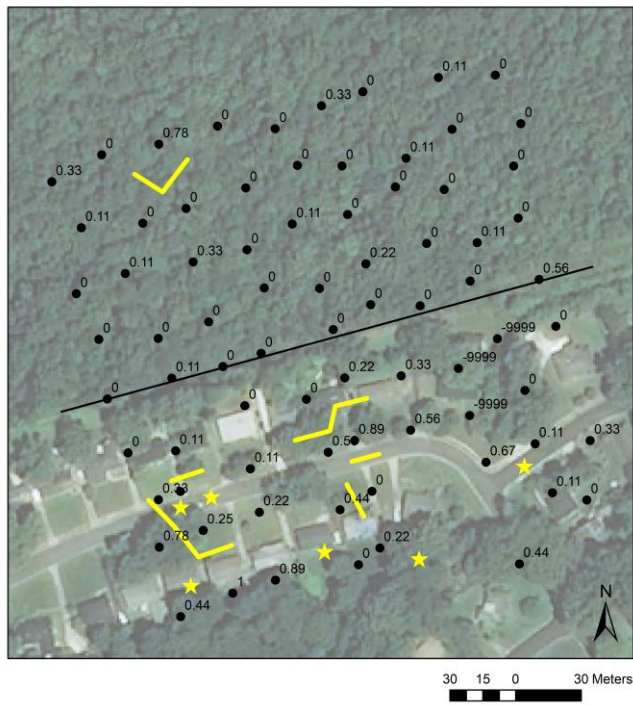


Figure S65. Urban_small_Grass cover

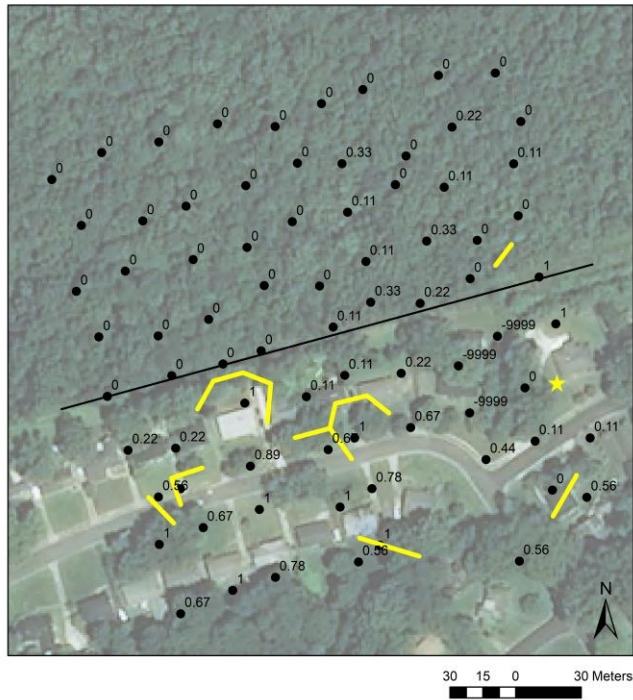


Figure S66. Urban_small_Shrub cover

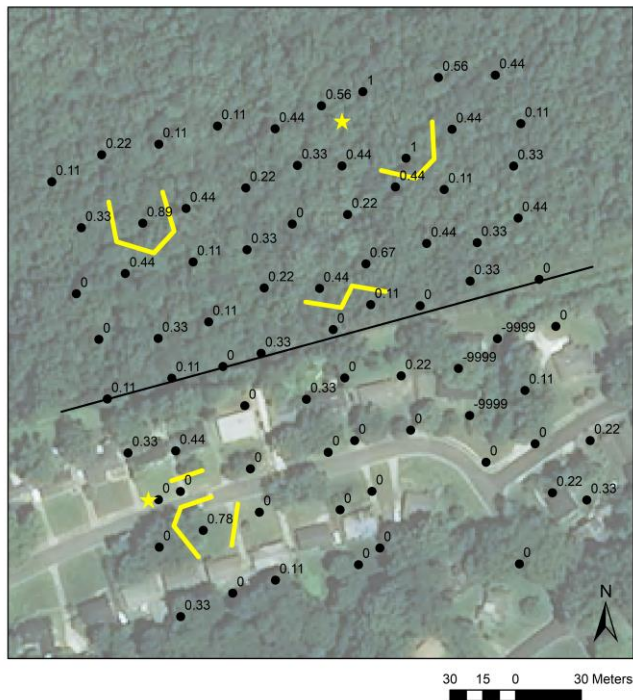


Figure S67. Urban_small_Vine cover

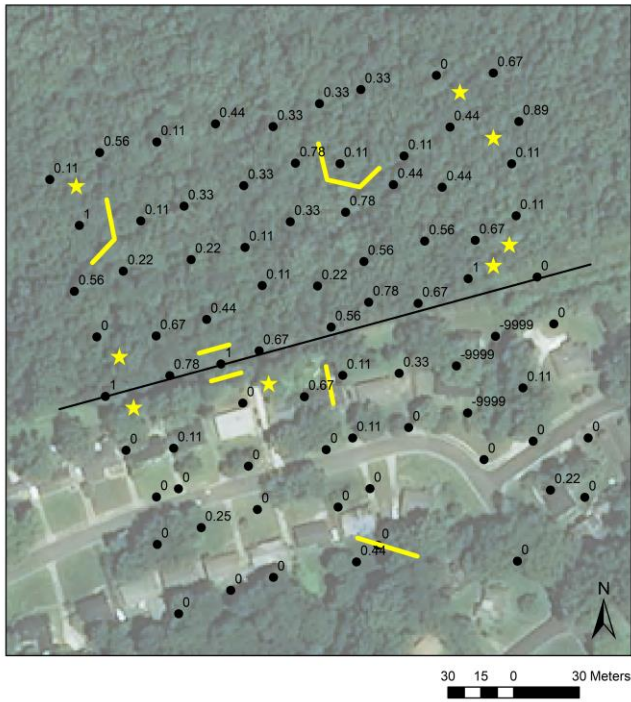


Figure S68. Urban_small_Bare ground cover

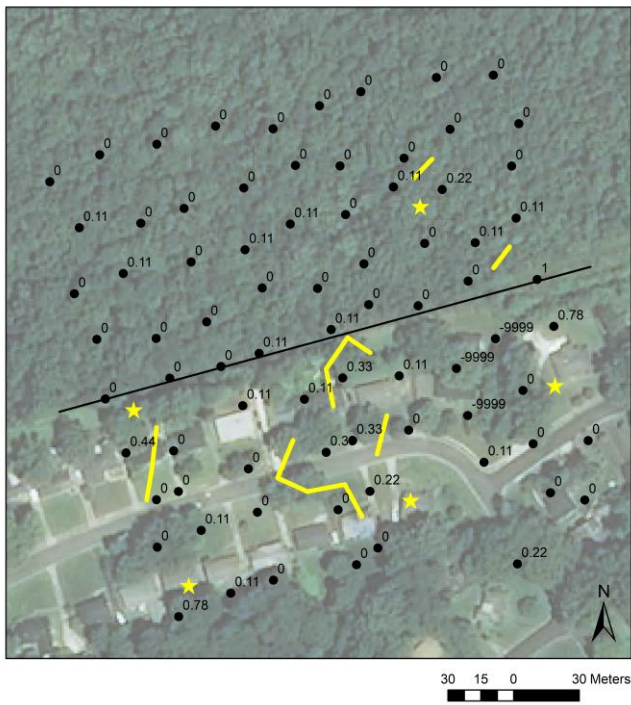


Figure S69. Urban_small_Impervious surface cover

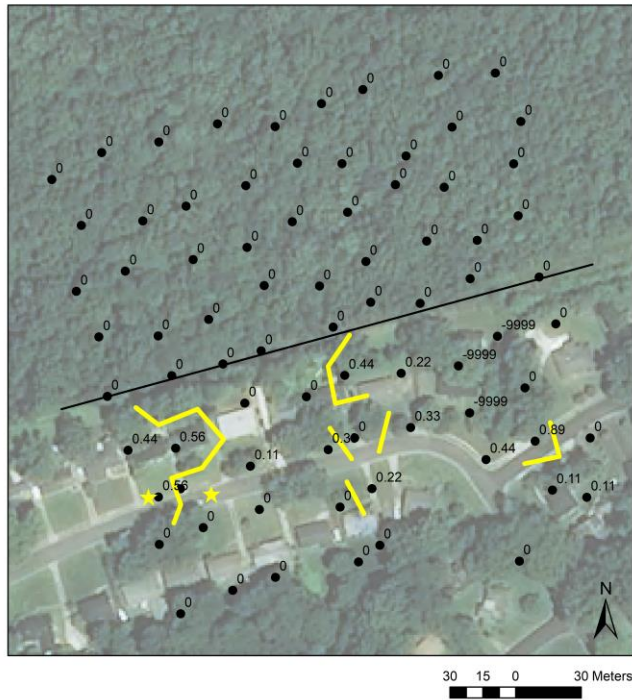


Figure S70. Urban_small_All environmental variables

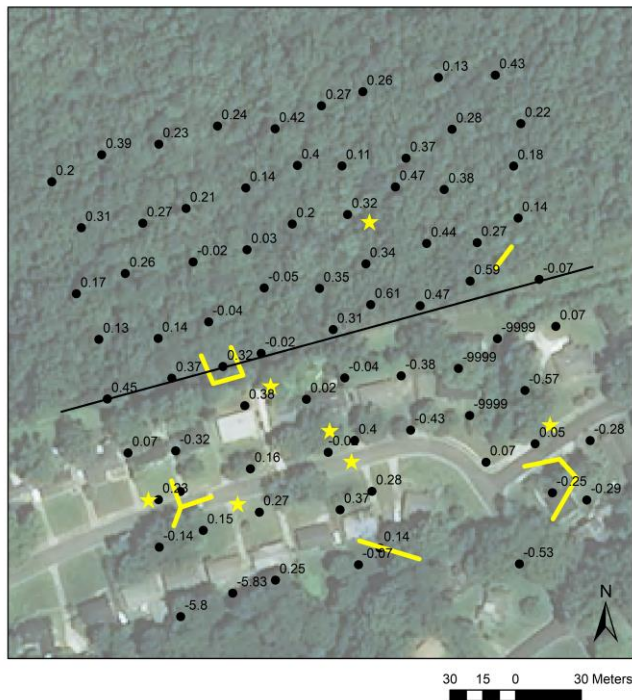


Figure S71. Urban_small_Total abundance

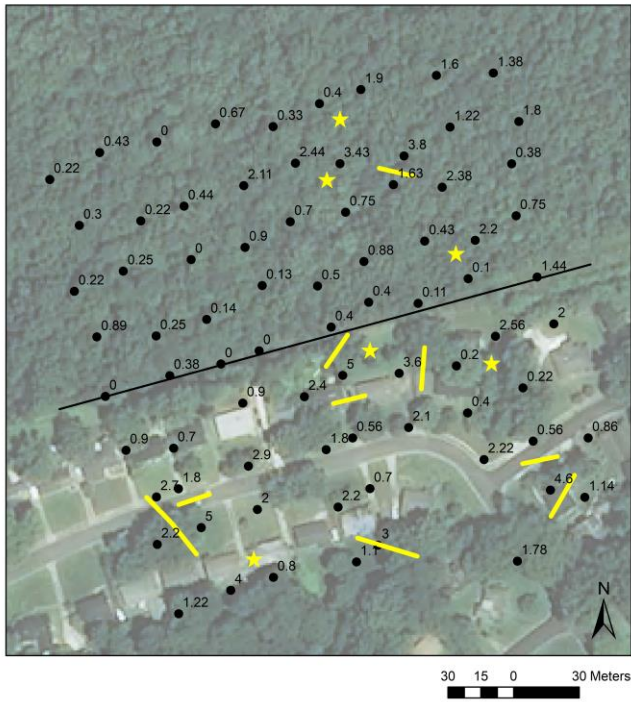


Figure S72. Urban_small_Total evenness

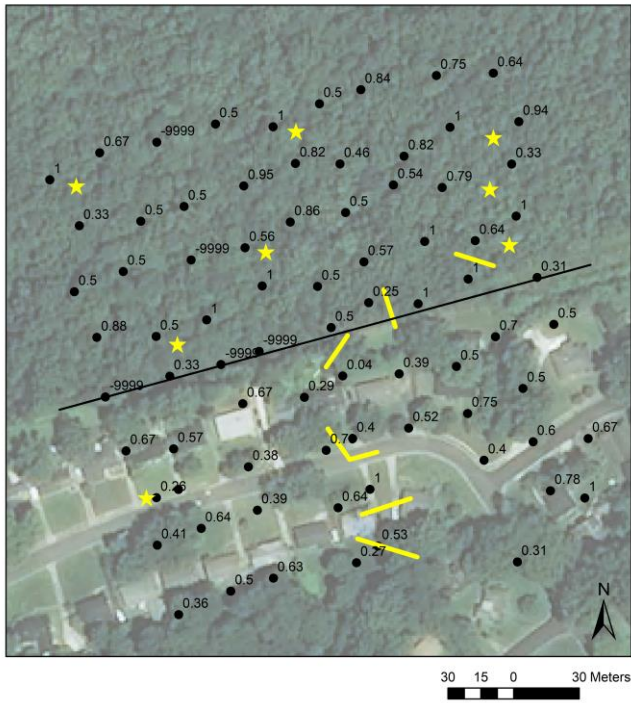


Figure S73. Urban_small_Forest abundance

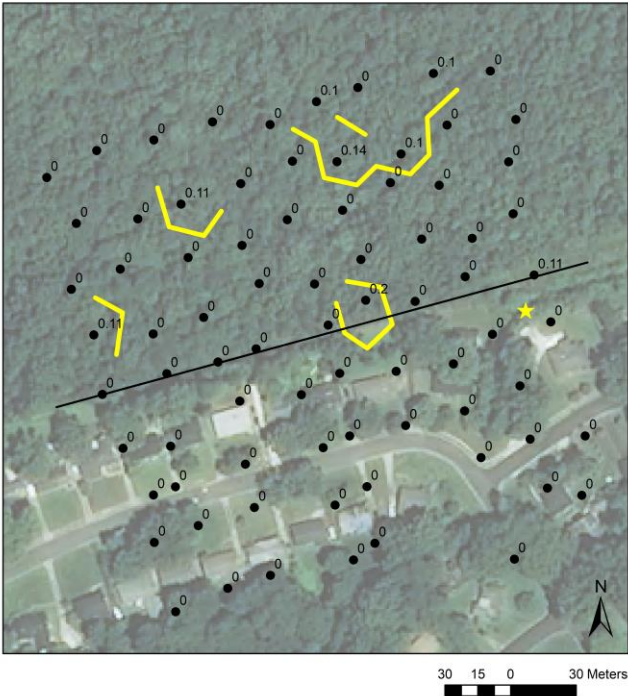


Figure S74. Urban_small_Forest richness

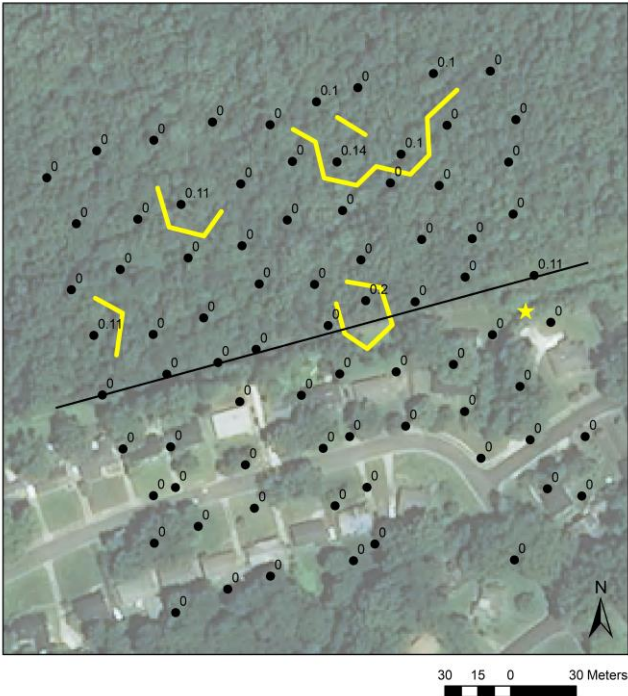


Figure S75. Urban_small_Generalist abundance

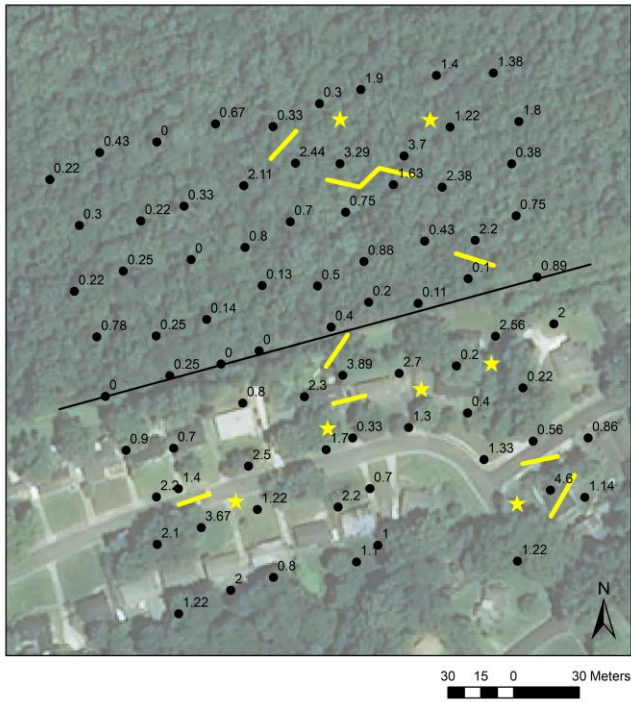


Figure S76. Urban_small_Generalist evenness

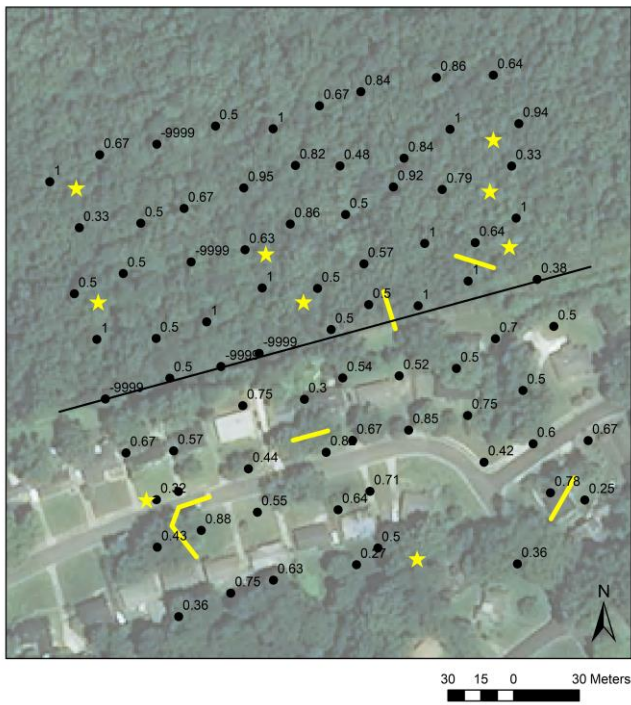


Figure S77. Urban_small_Forest species

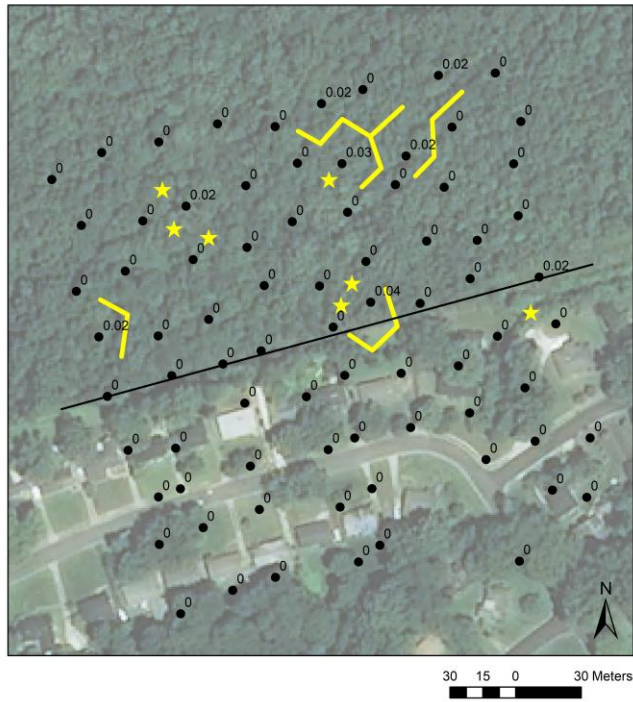


Figure S78. Urban_small_Open species

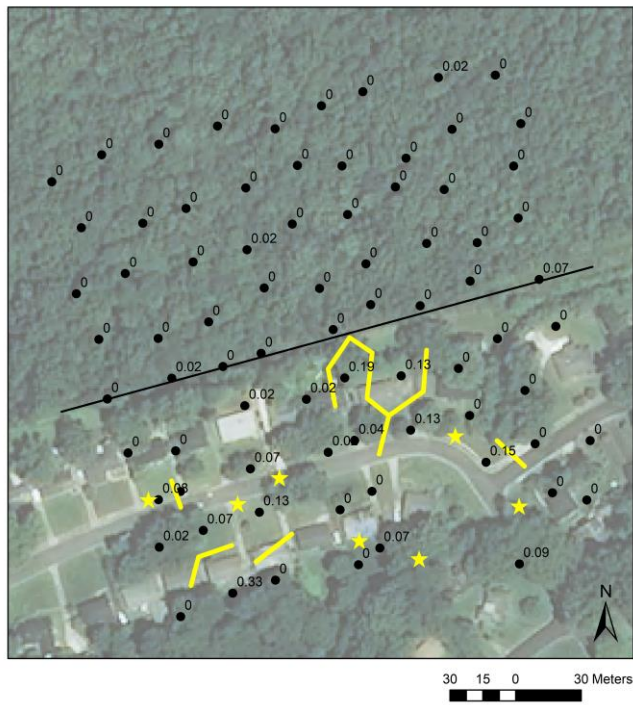


Figure S79. Urban_small_Anisodactylus dulcicollis

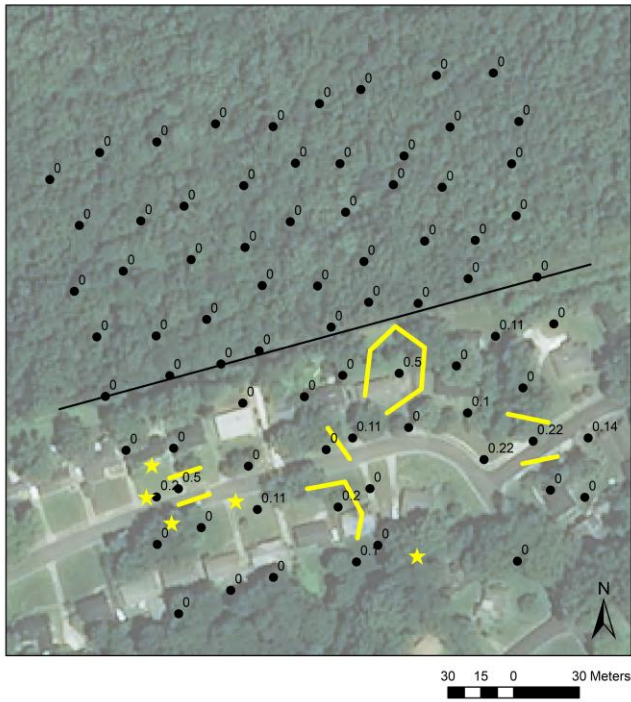


Figure S80. Urban_small_Anisodactylus furvus

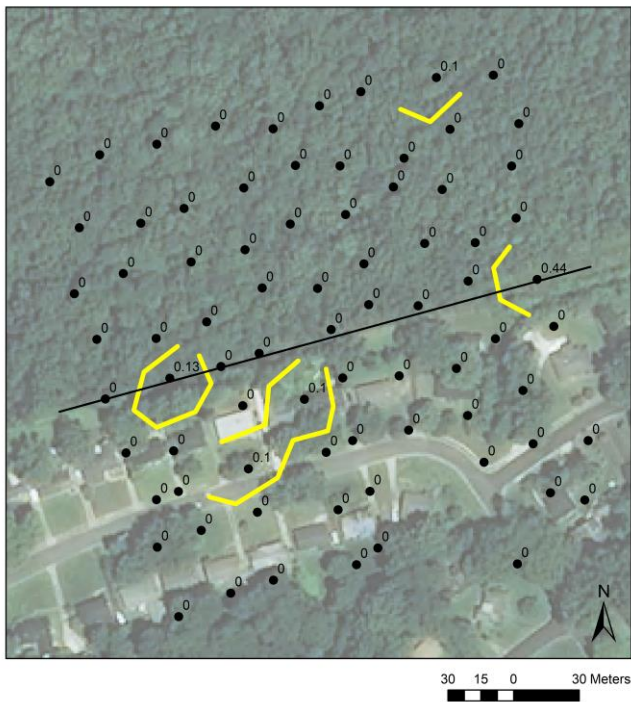


Figure S81. Urban_small_Chlaenius tricolor tricolor

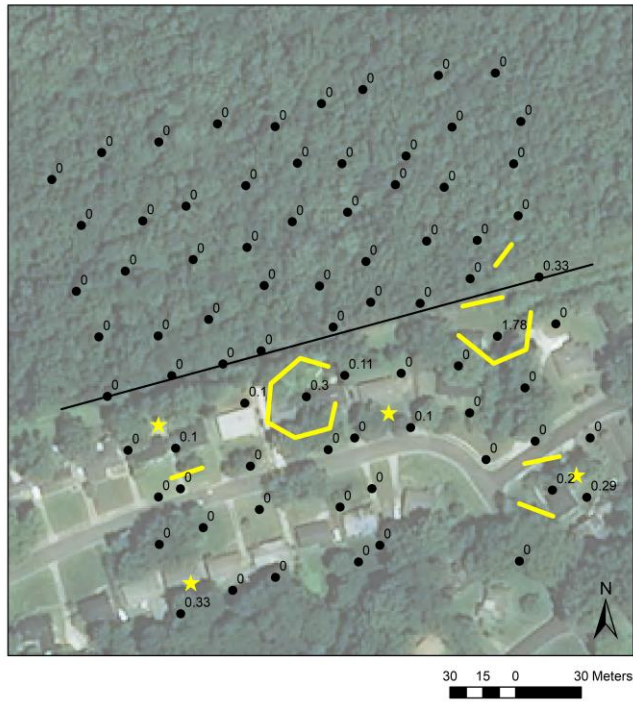


Figure S82. Urban_small_Harpalus longicollis

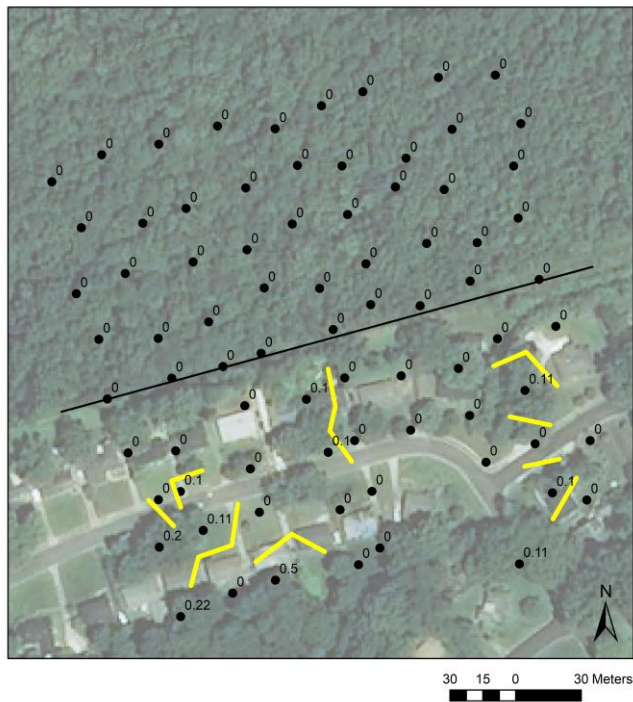


Figure S83. Urban_small_Scarites subterraneus

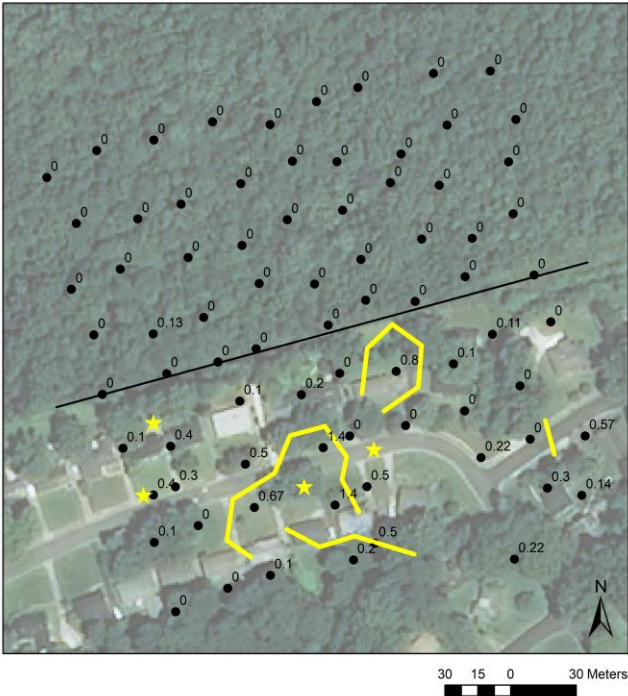


Figure S84. Urban_small_Sphaeroderus stenostomus lecontei

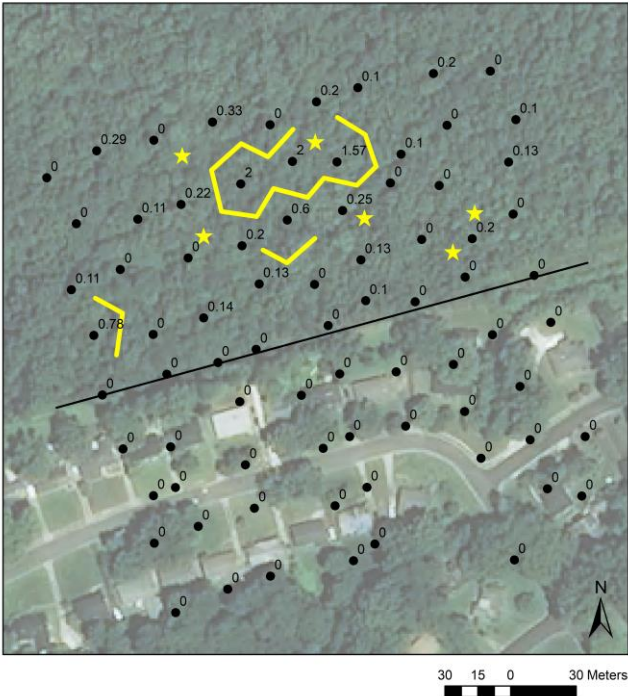


Figure S87. Urban_large_Bare ground cover

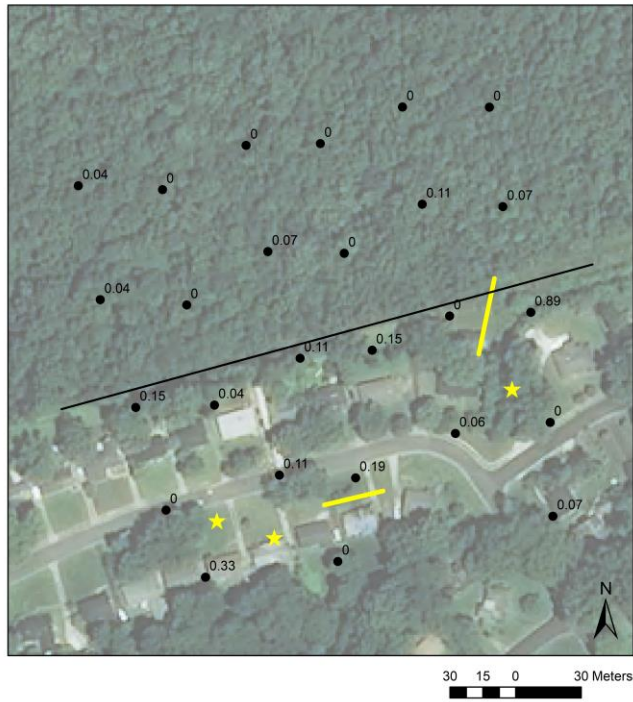


Figure S88. Urban_large_Amara familiaris

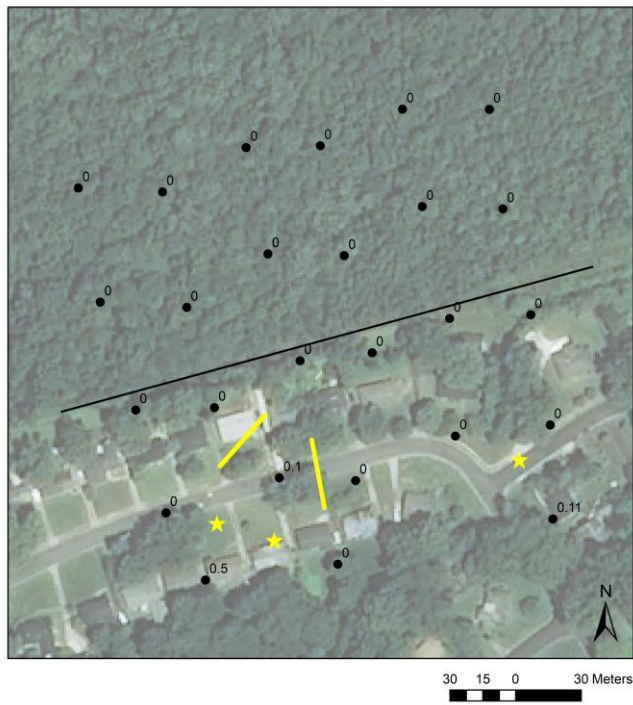


Figure S89. Urban_large_Chlaenius tomentosus



Figure S90. Urban_large_Chlaenius tricolor tricolor

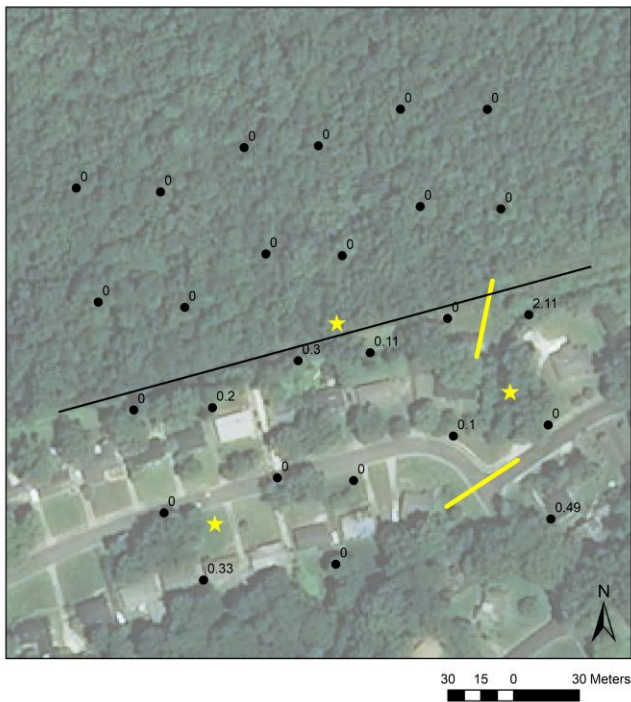


Figure S91. Urban_large_Harpalus pensylvanicus

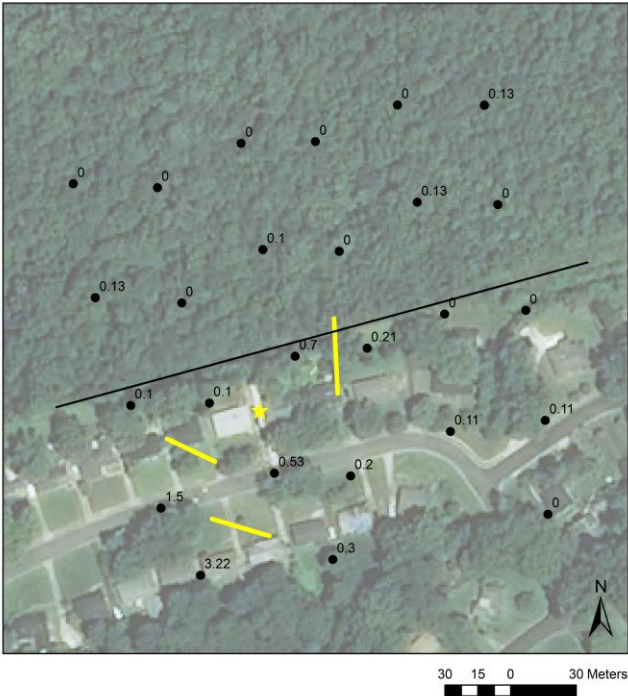


Figure S92. Urban_large_Sphaeroderus stenostomus lecontei

