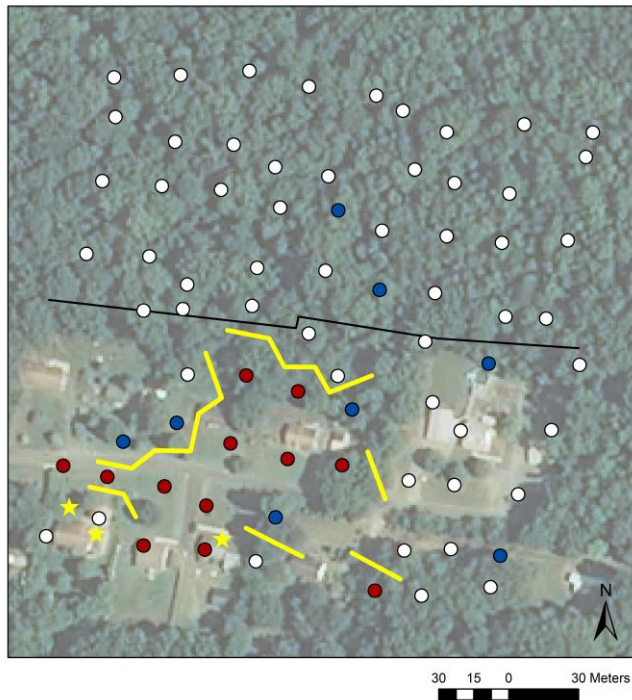
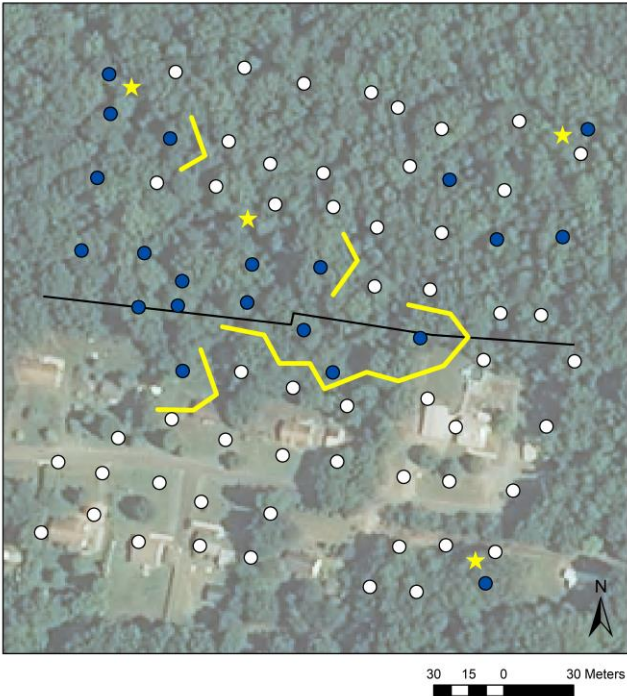


**Figures S93-S108.** Clusters (colored dots), boundaries (yellow lines), and singletons (yellow stars) in environmental and ground beetle variables that exhibited boundaries and singletons at, near, or parallel to edges. Figures are named by site (rural, suburban, or urban), spatial scale (small or large), and variable. Edges are indicated by black lines and correspond to the property lines between County-owned forest and private development.

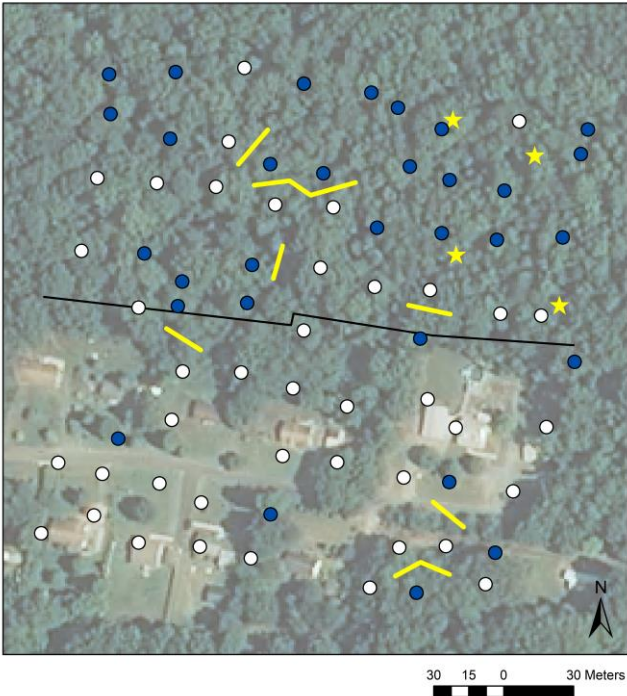
**Figure S93.** Rural\_small\_Forb cover



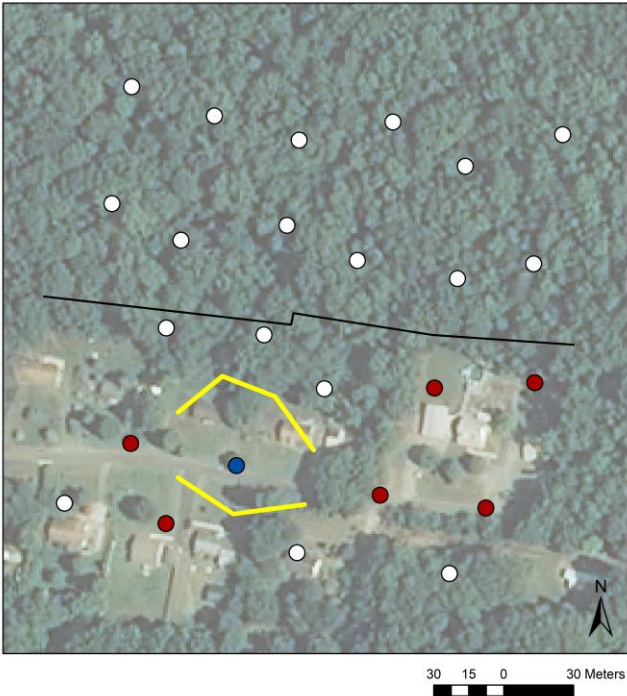
**Figure S94.** Rural\_small\_Vine cover



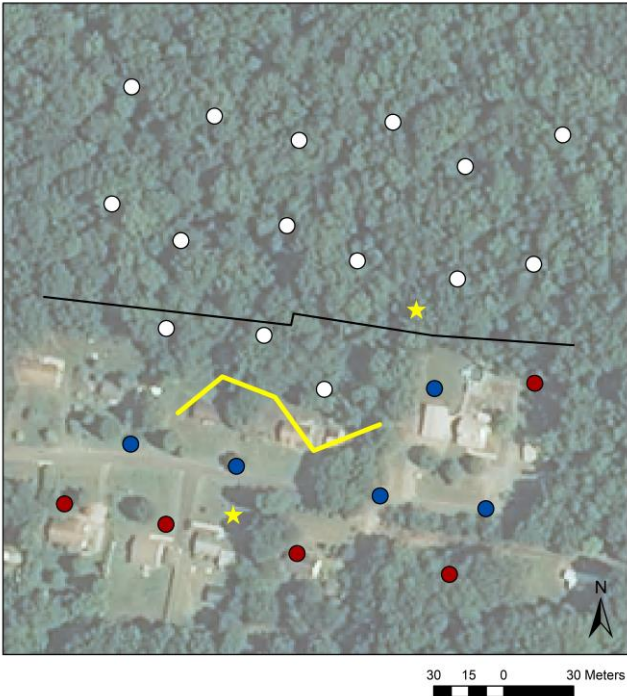
**Figure S95.** Rural\_small\_Total evenness



**Figure S96.** Rural\_large\_Temperature

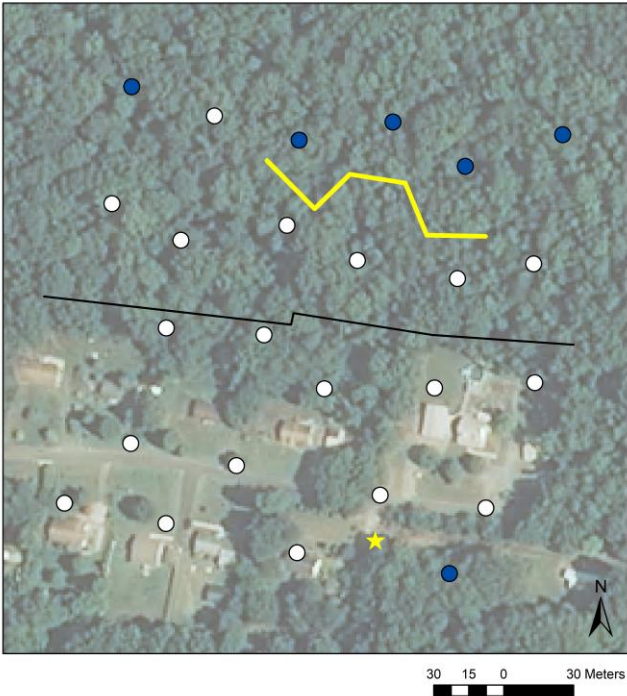


**Figure S97.** Rural\_large\_Humidity

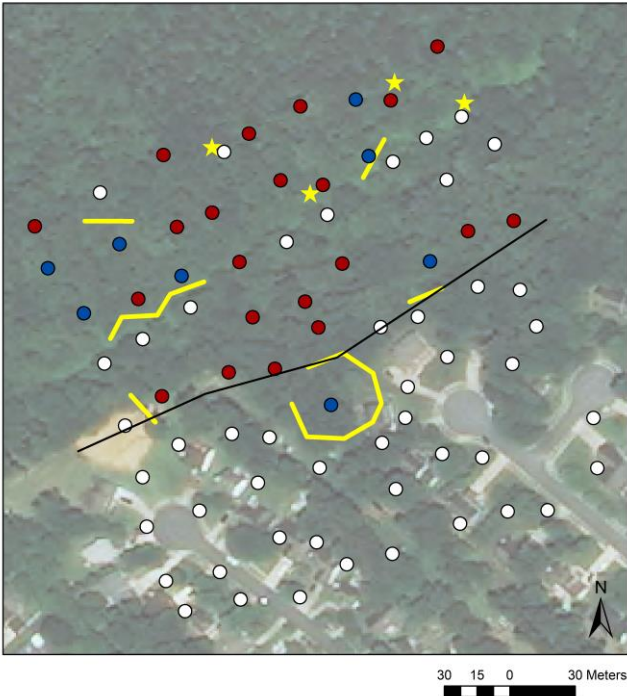




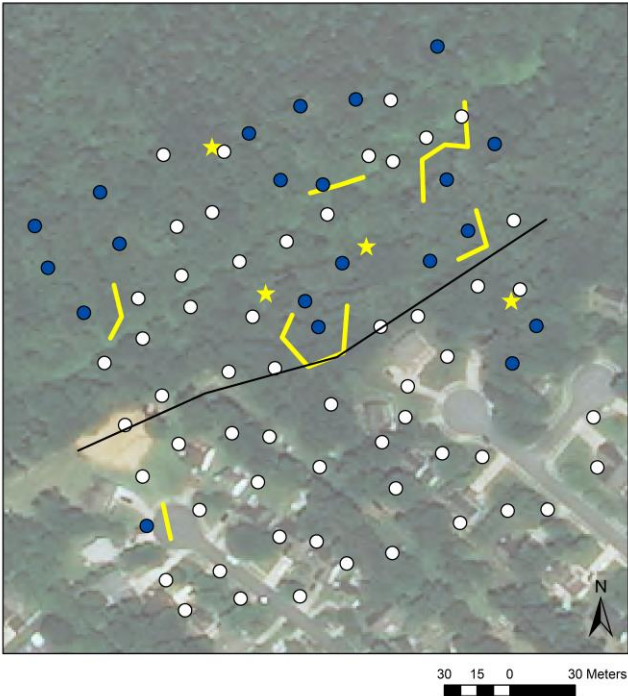
**Figure S98.** Rural\_large\_Total evenness



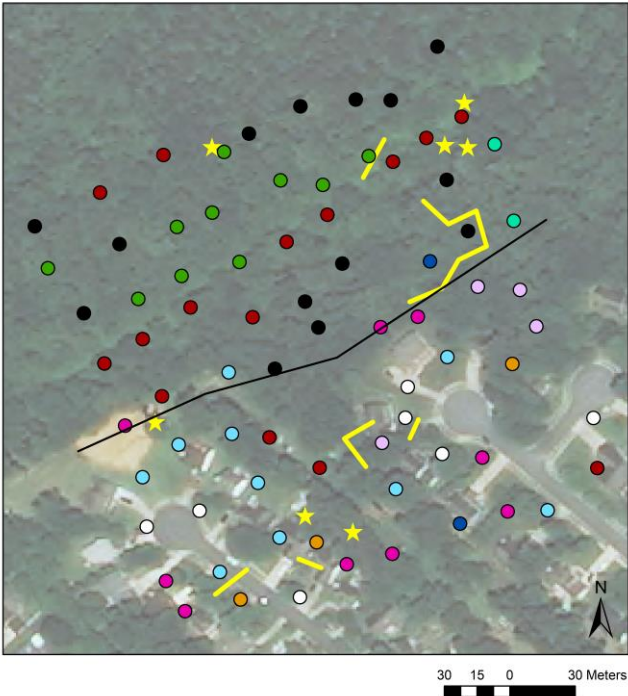
**Figure S99.** Suburban\_small\_Leaf litter depth



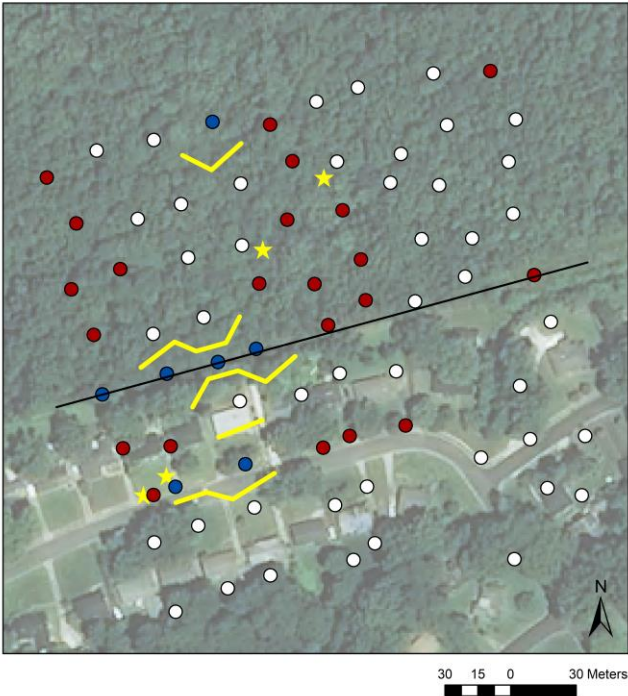
**Figure S100.** Suburban\_small\_Shrub cover



**Figure S101.** Suburban\_small\_All environmental variables



**Figure S102.** Urban\_small\_Slope



**Figure S103.** Urban\_small\_Canopy cover

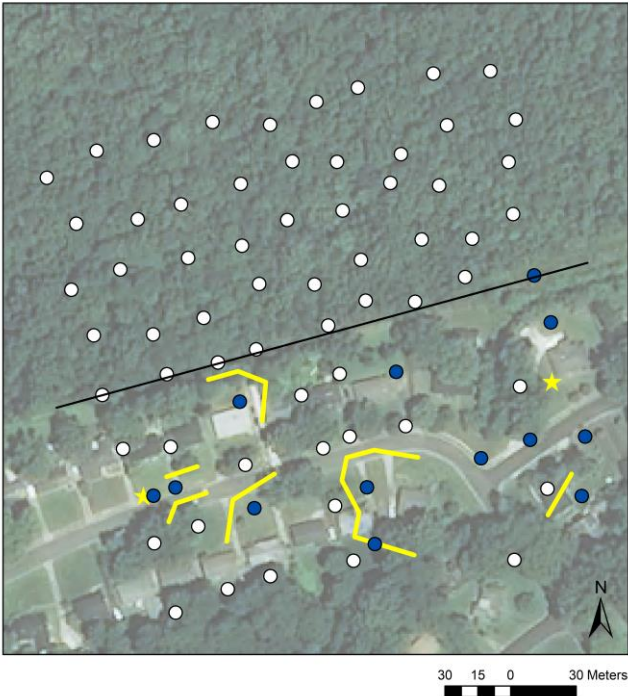




Figure S104. Urban\_small\_Shrub cover

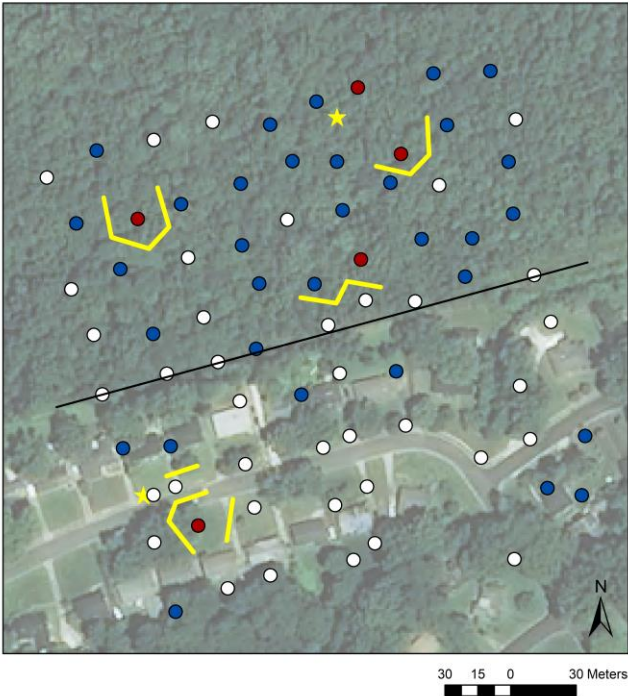
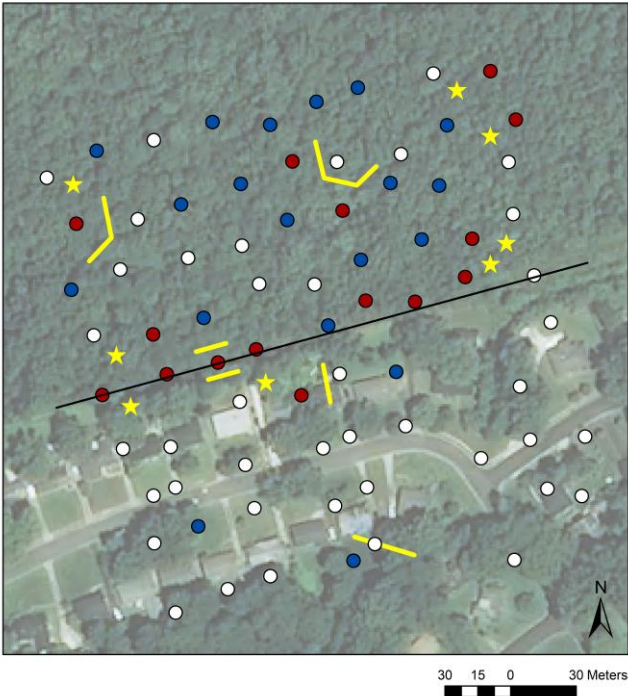
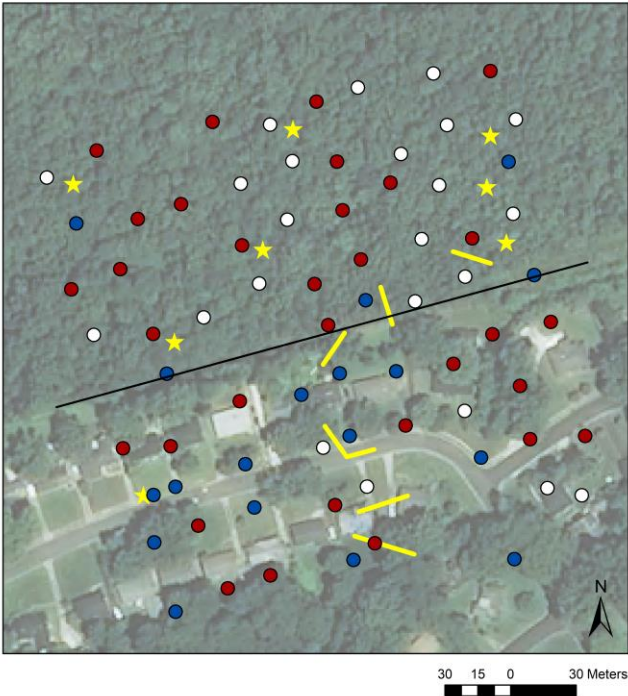


Figure S105. Urban\_small\_Vine cover



**Figure S106.** Urban\_small\_Total evenness



**Figure S107.** Urban\_small\_Generalist evenness

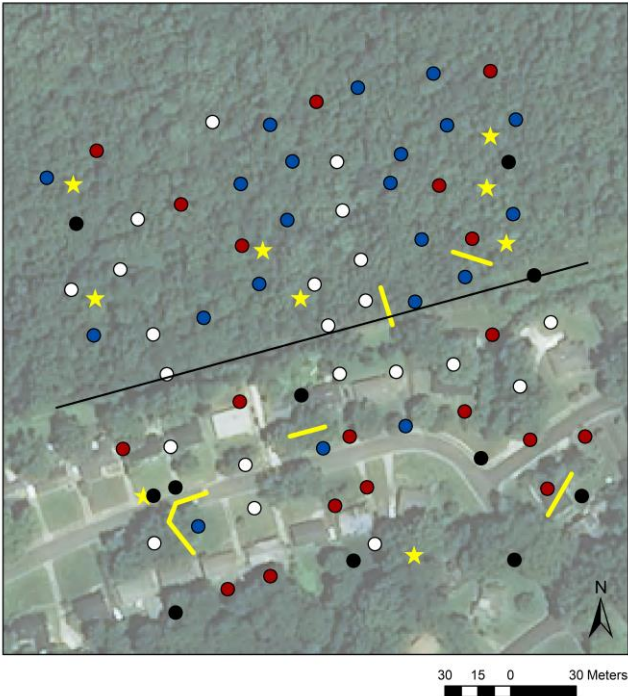




Figure S108. Urban\_large\_Microrelief

