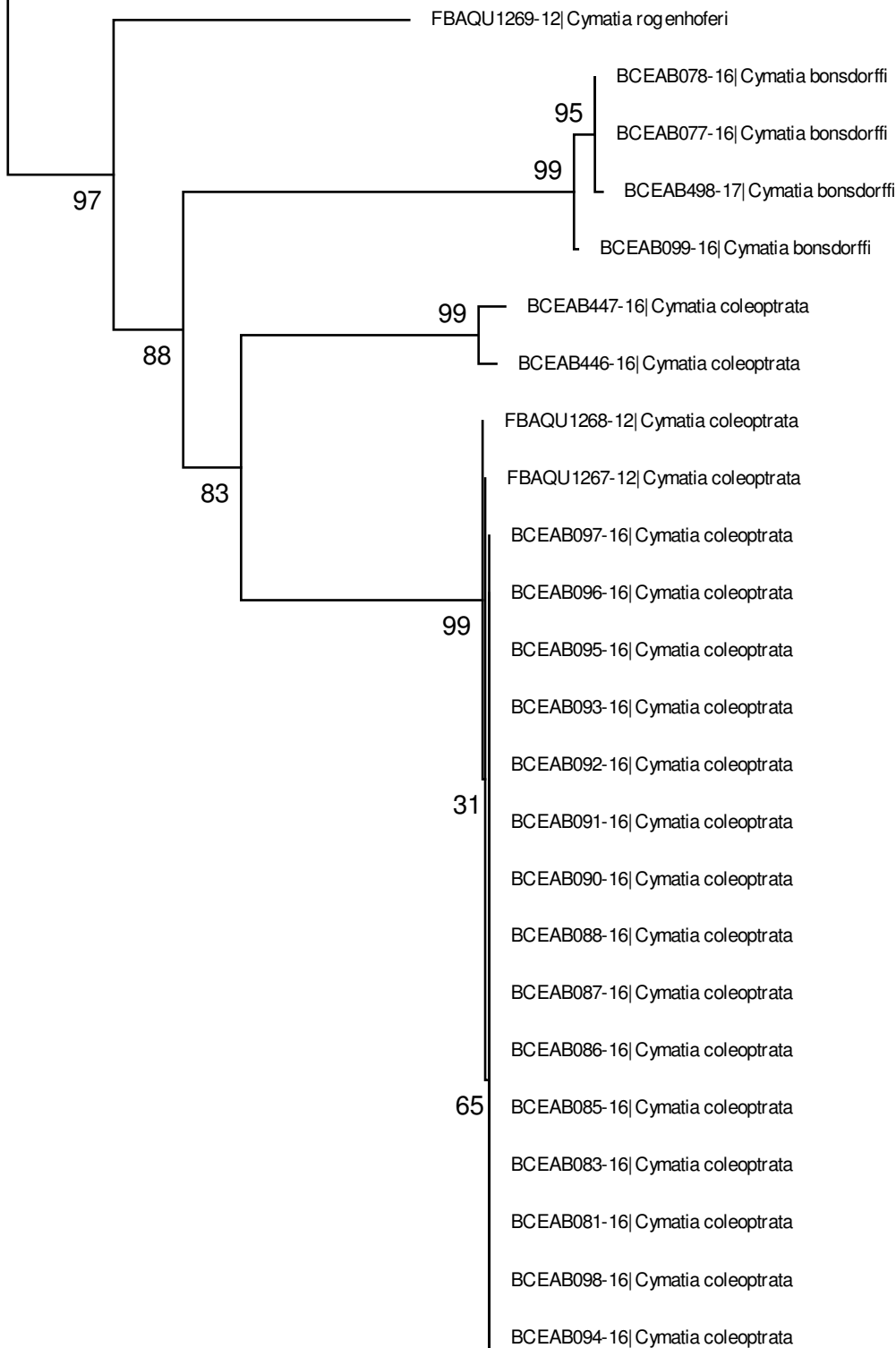
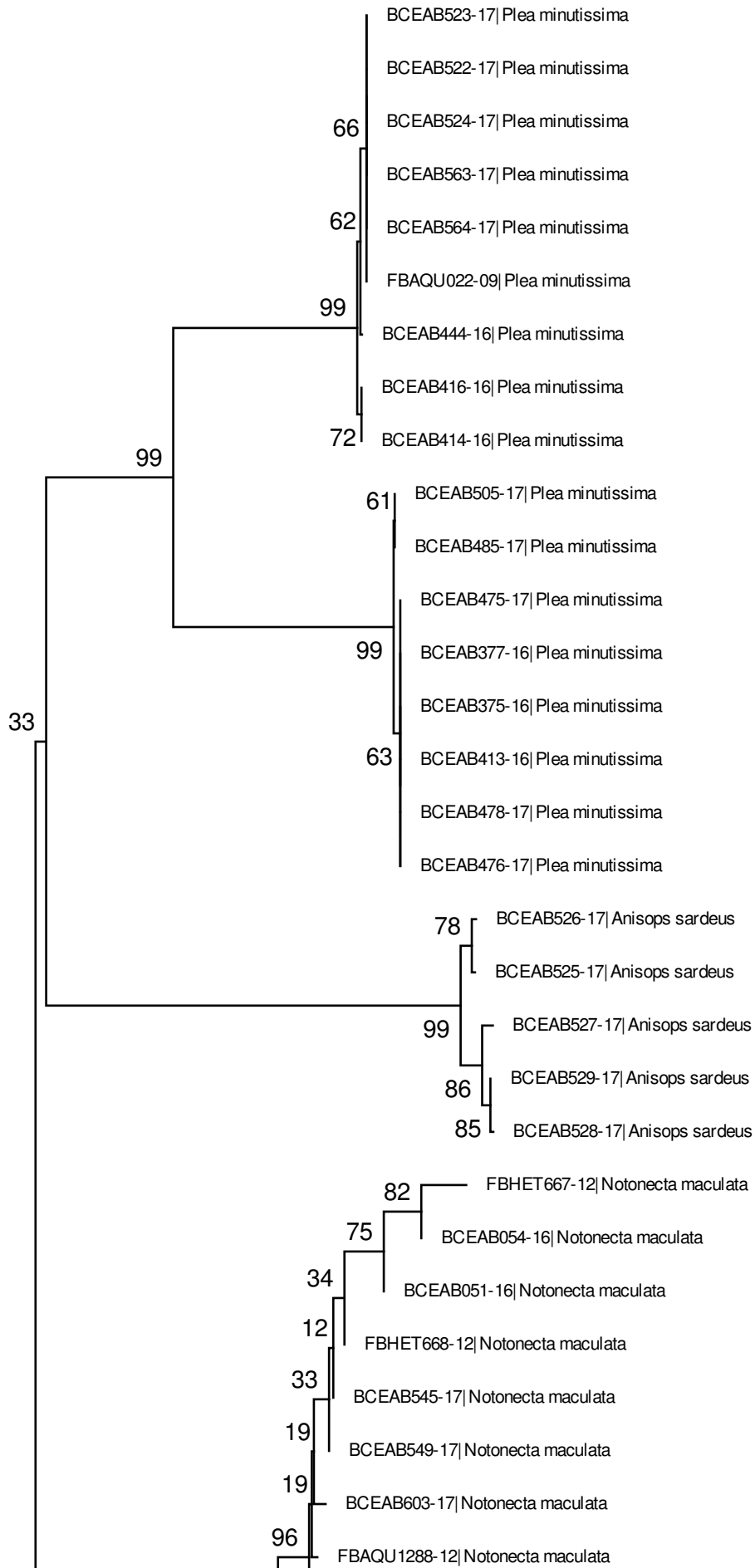
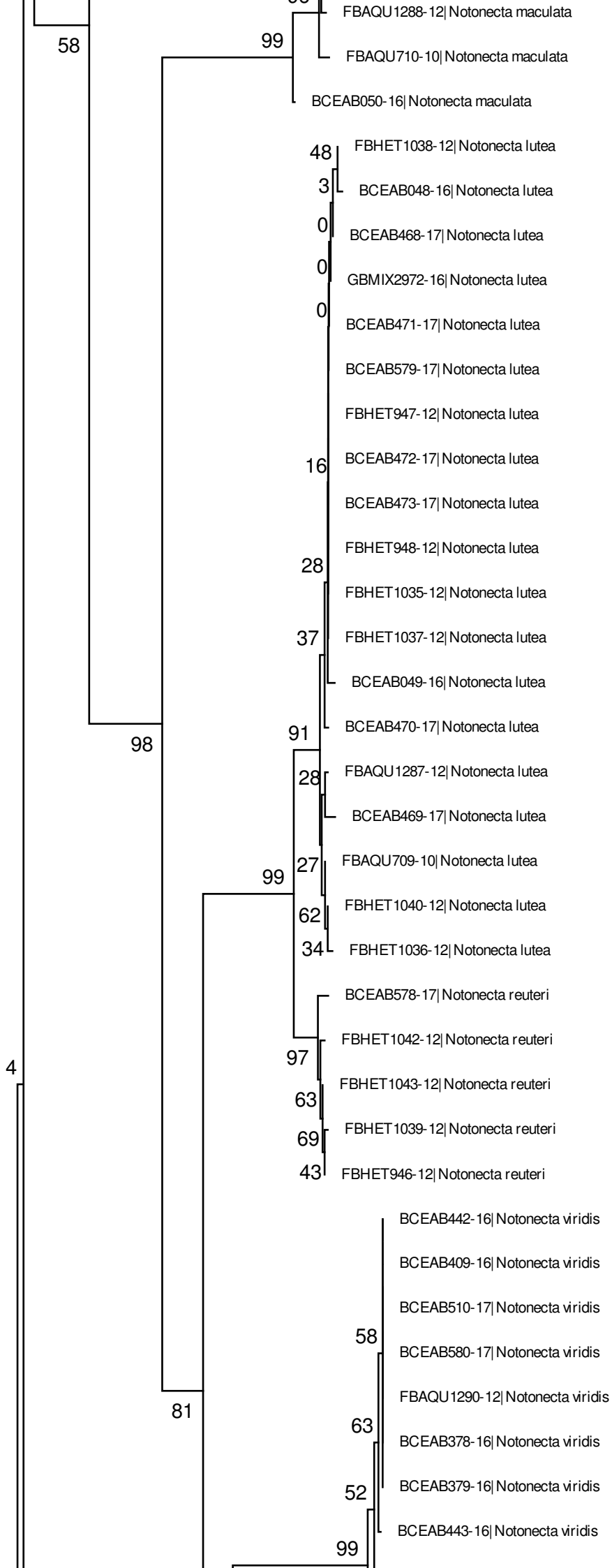


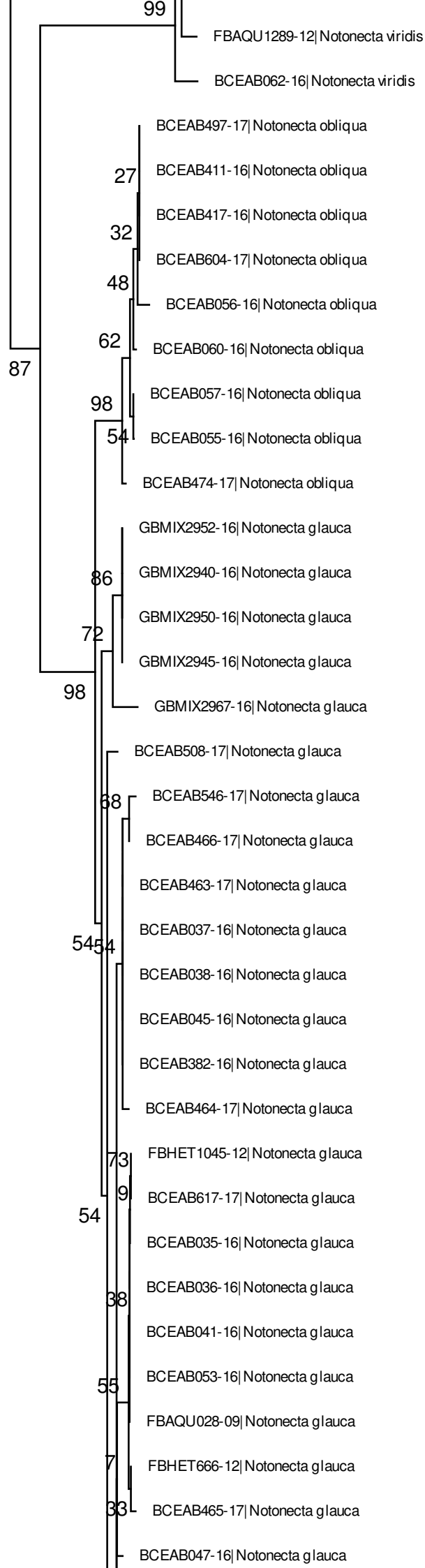
BCEAB535-17| *Sigara lateralis*
 FBAQU164-09| *Sigara lateralis*
 BCEAB032-16| *Sigara lateralis*
 BCEAB031-16| *Sigara lateralis*
 BCEAB030-16| *Sigara lateralis*
 BCEAB029-16| *Sigara lateralis*
 BCEAB028-16| *Sigara lateralis*
 BCEAB027-16| *Sigara lateralis*
 BCEAB462-17| *Sigara lateralis*
 GBMIX2957-16| *Sigara lateralis*
 BCEAB425-16| *Sigara lateralis*



BCEAB089-16| *Cymatia coleoprata*
BCEAB084-16| *Cymatia coleoprata*
BCEAB082-16| *Cymatia coleoprata*
BCEAB080-16| *Cymatia coleoprata*
BCEAB079-16| *Cymatia coleoprata*





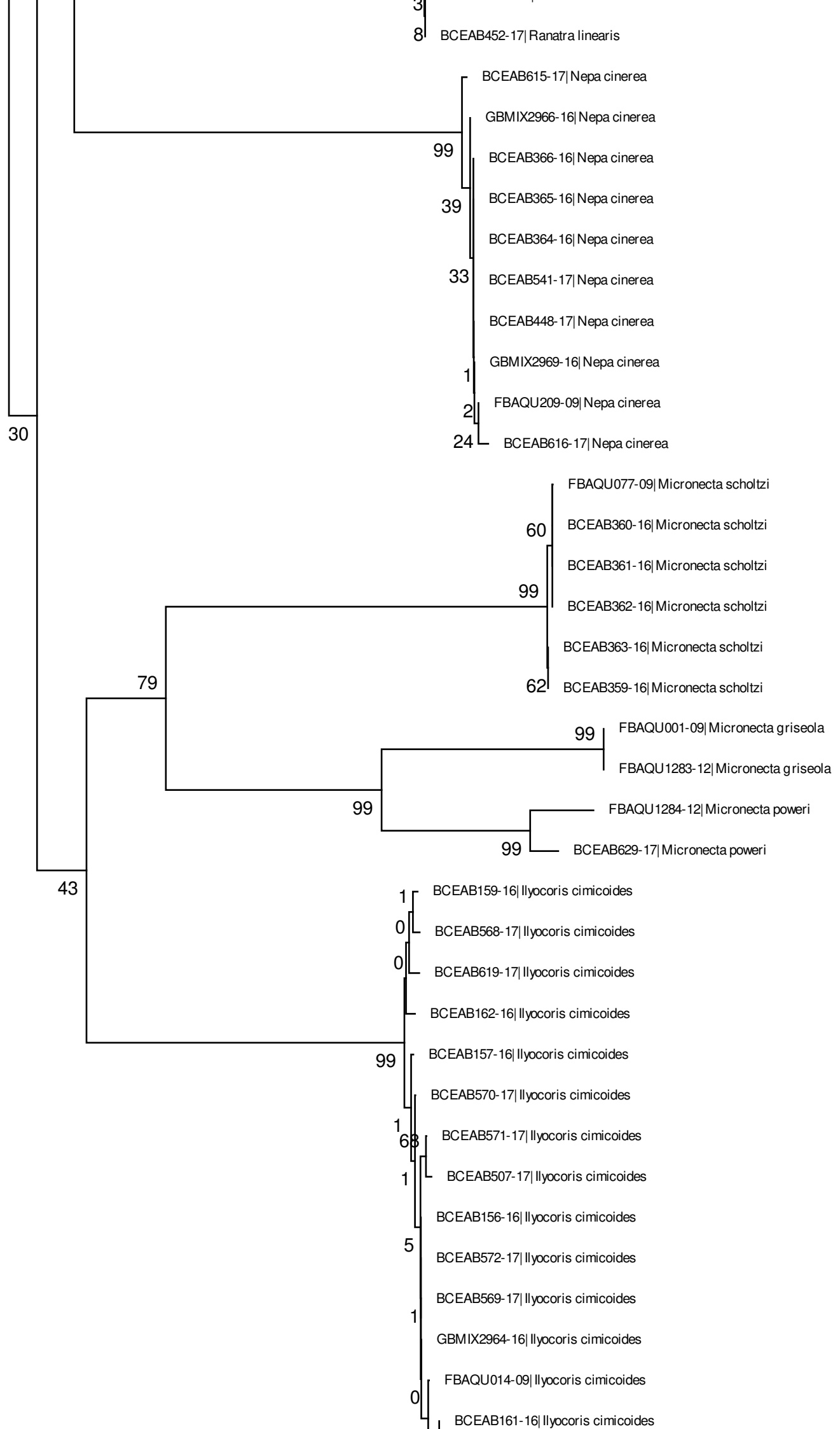


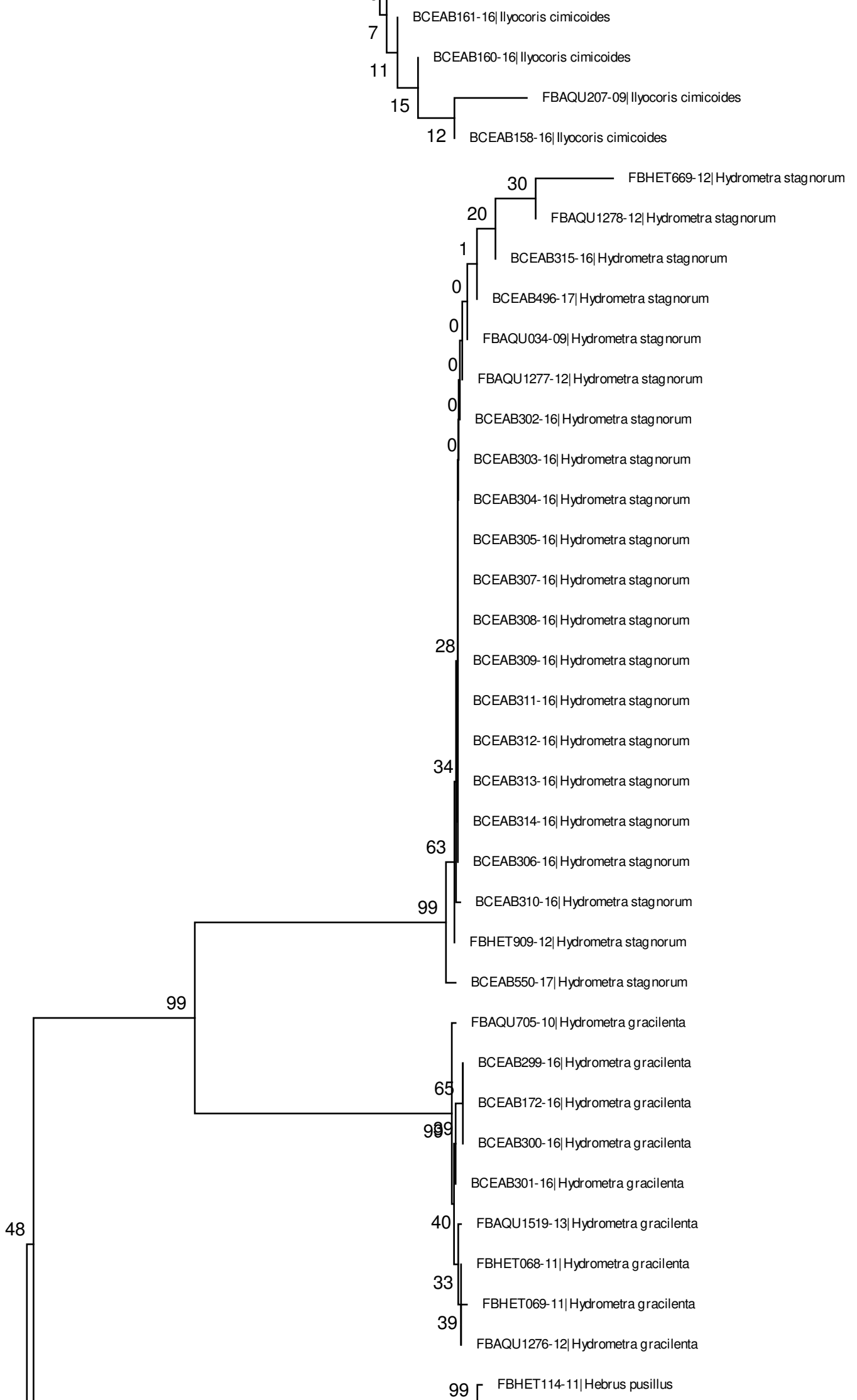
BCEAB047-16| *Notonecta glauca*
 27 BCEAB620-17| *Notonecta glauca*
 16 BCEAB410-16| *Notonecta glauca*
 65 BCEAB040-16| *Notonecta glauca*
 BCEAB046-16| *Notonecta glauca*
 BCEAB509-17| *Notonecta glauca*
 BCEAB610-17| *Notonecta glauca*
 BCEAB042-16| *Notonecta glauca*
 FBAQU708-10| *Notonecta glauca*
 BCEAB412-16| *Notonecta glauca*
 BCEAB380-16| *Notonecta glauca*
 BCEAB043-16| *Notonecta glauca*
 BCEAB381-16| *Notonecta glauca*
 BCEAB044-16| *Notonecta glauca*
 BCEAB039-16| *Notonecta glauca*
 BCEAB544-17| *Notonecta glauca*
 BCEAB052-16| *Notonecta glauca*
 BCEAB467-17| *Notonecta glauca*

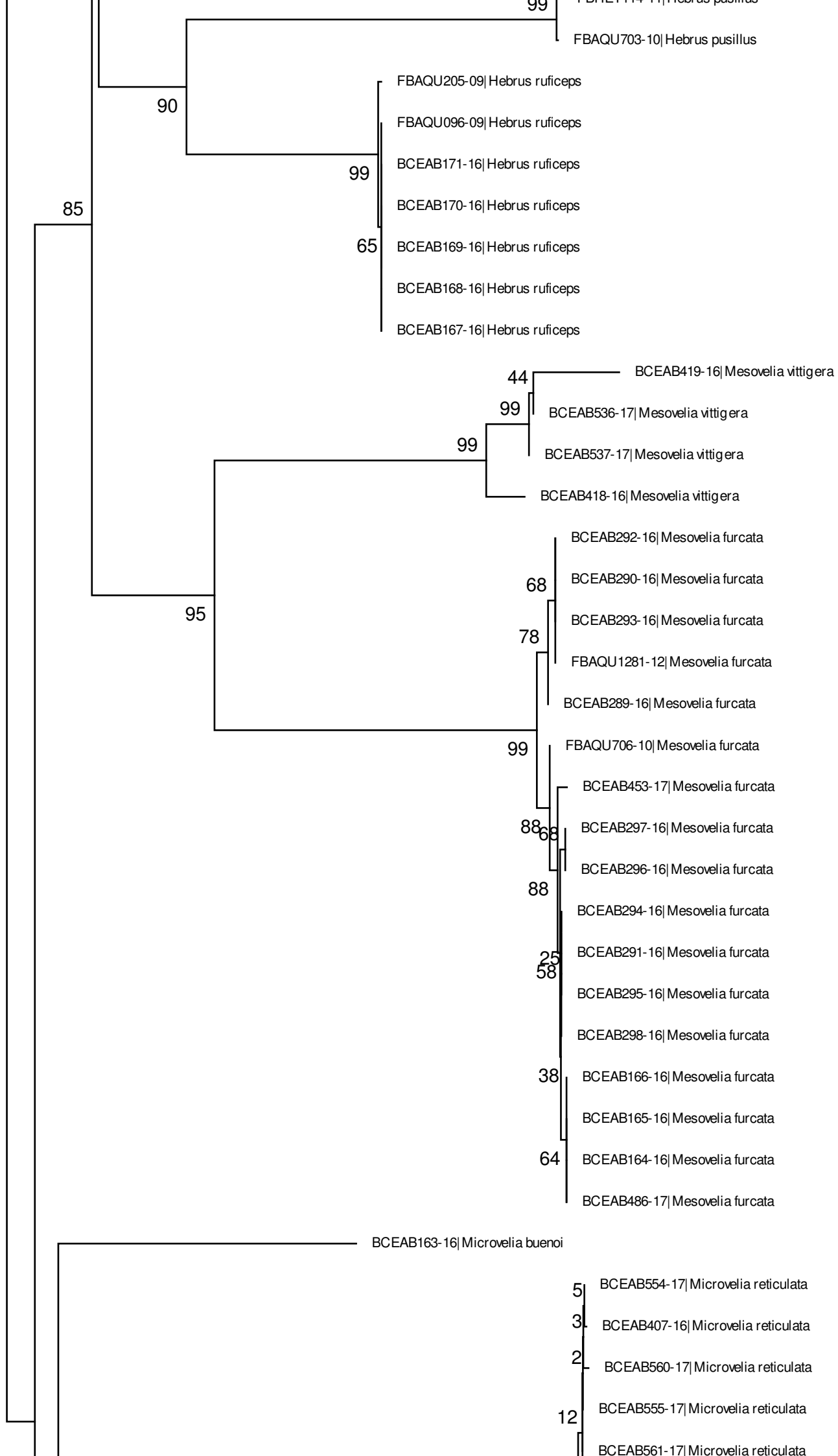
99 GBMIX2984-16| *Aphelocheirus aestivalis*
 GBMIX2985-16| *Aphelocheirus aestivalis*

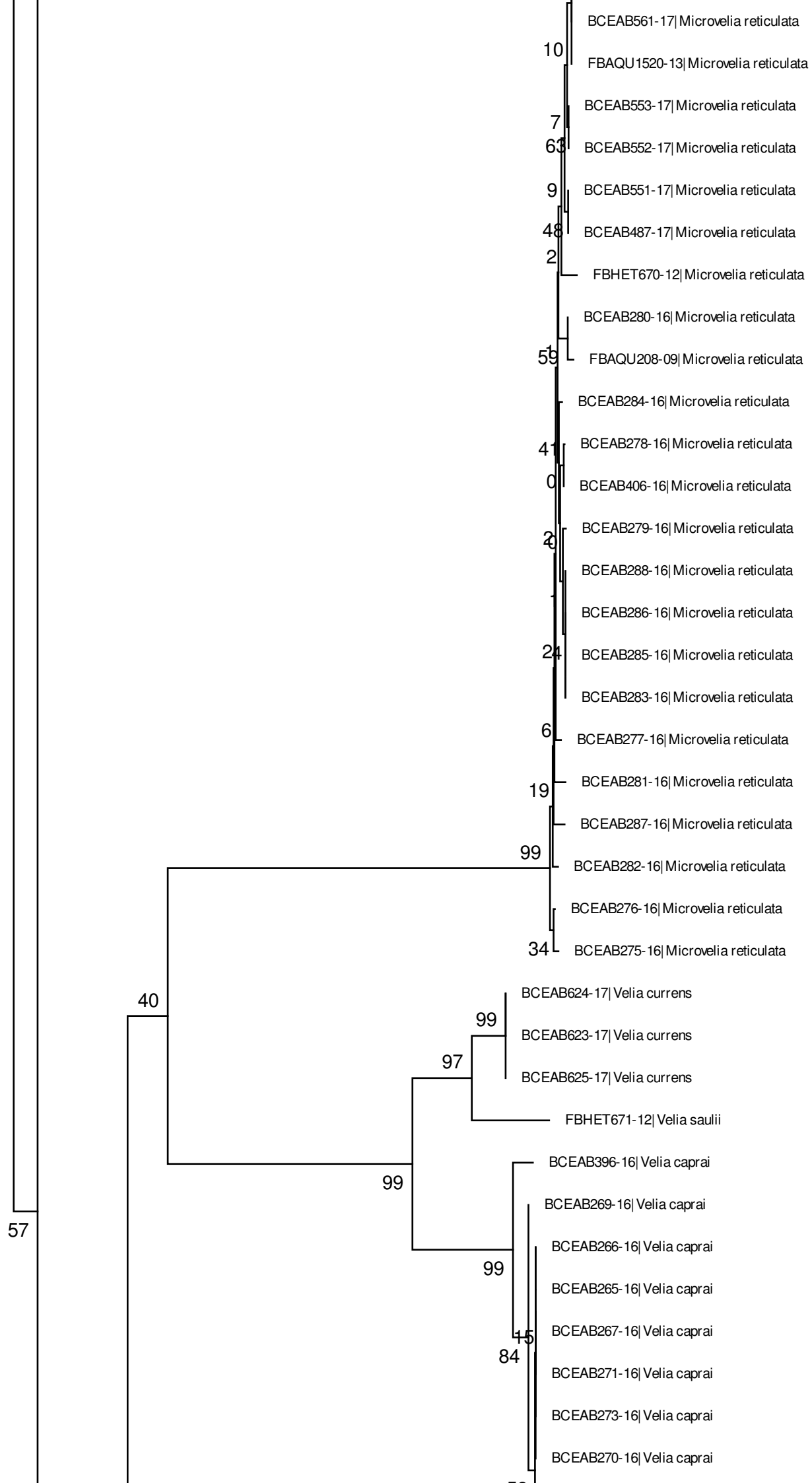
FBAQU711-10| *Ranatra linearis*
 11 BCEAB520-17| *Ranatra linearis*
 10 BCEAB565-17| *Ranatra linearis*
 7 BCEAB566-17| *Ranatra linearis*
 8 GBMIX2996-16| *Ranatra linearis*
 18 BCEAB451-17| *Ranatra linearis*
 24 BCEAB543-17| *Ranatra linearis*
 40 BCEAB368-16| *Ranatra linearis*
 BCEAB450-17| *Ranatra linearis*
 99 FBAQU181-09| *Ranatra linearis*
 BCEAB367-16| *Ranatra linearis*
 BCEAB449-17| *Ranatra linearis*
 88 BCEAB567-17| *Ranatra linearis*
 BCEAB519-17| *Ranatra linearis*
 2 GBMIX2995-16| *Ranatra linearis*
 3

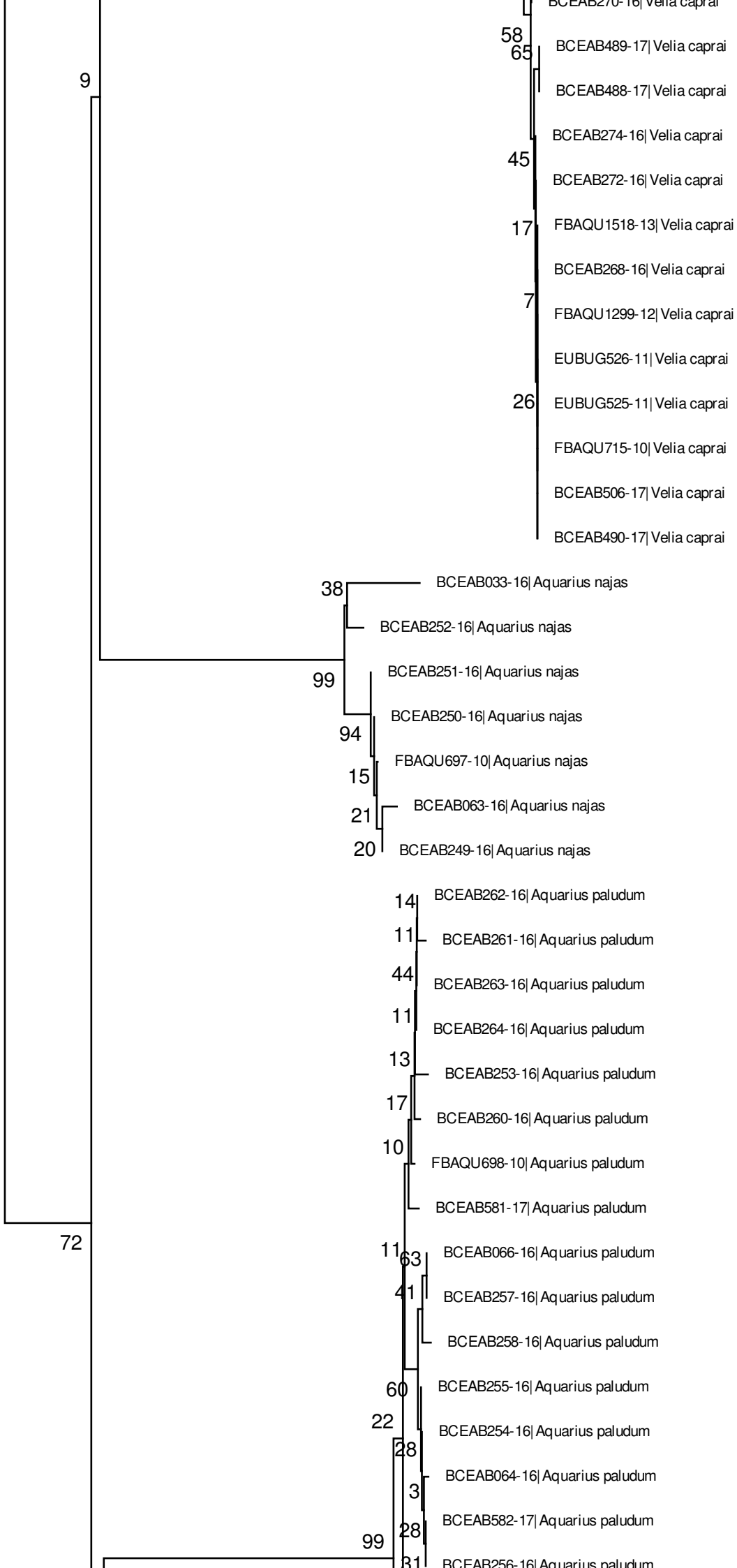
45

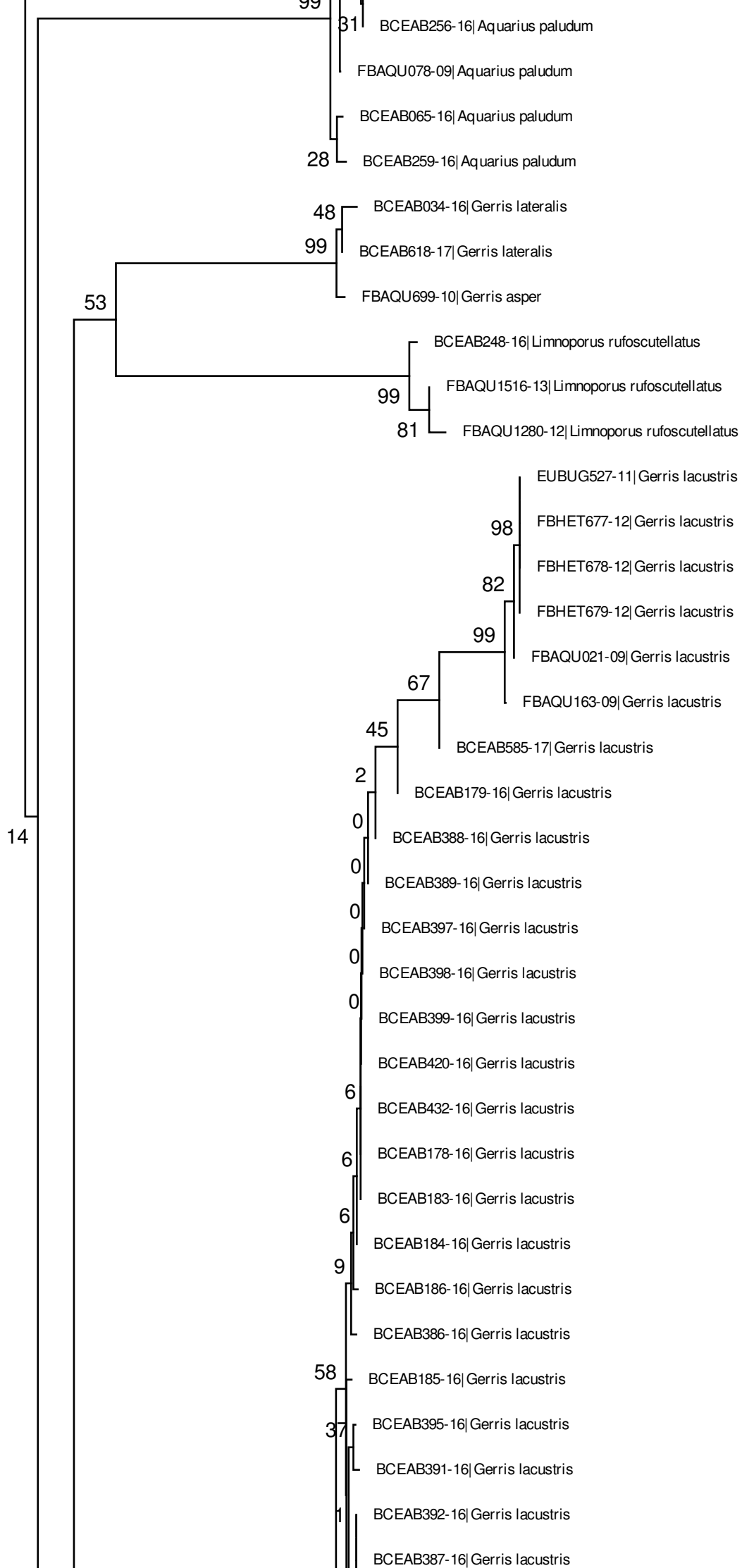


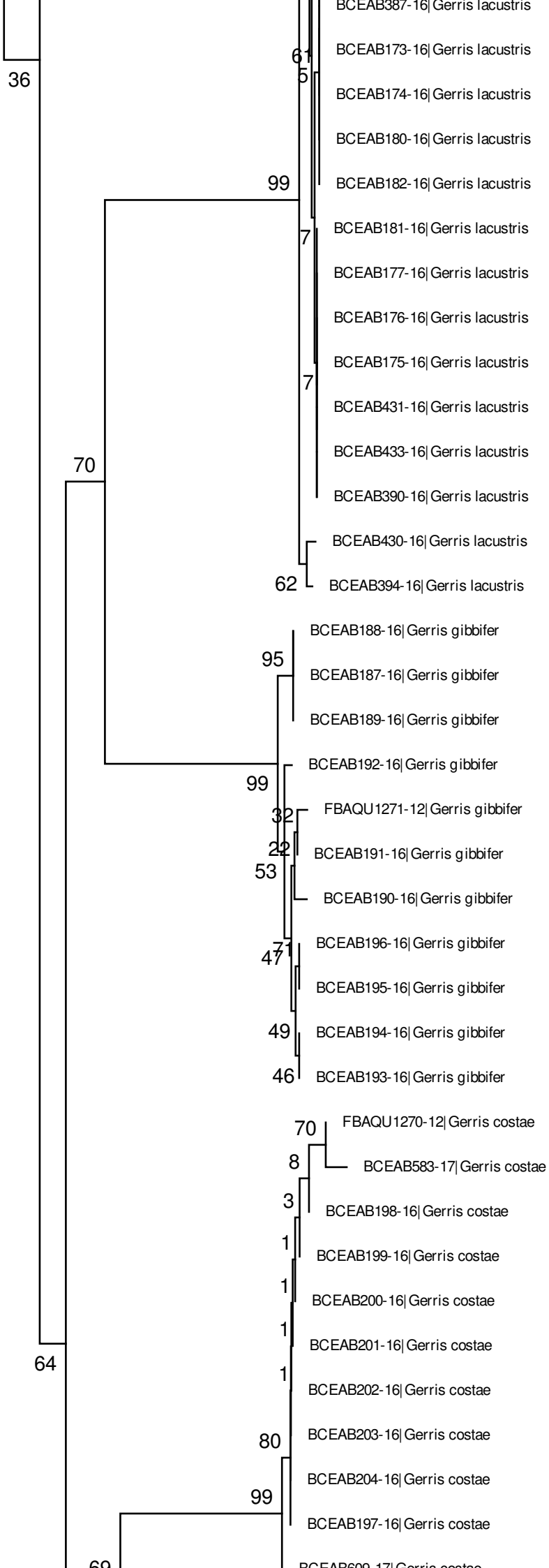


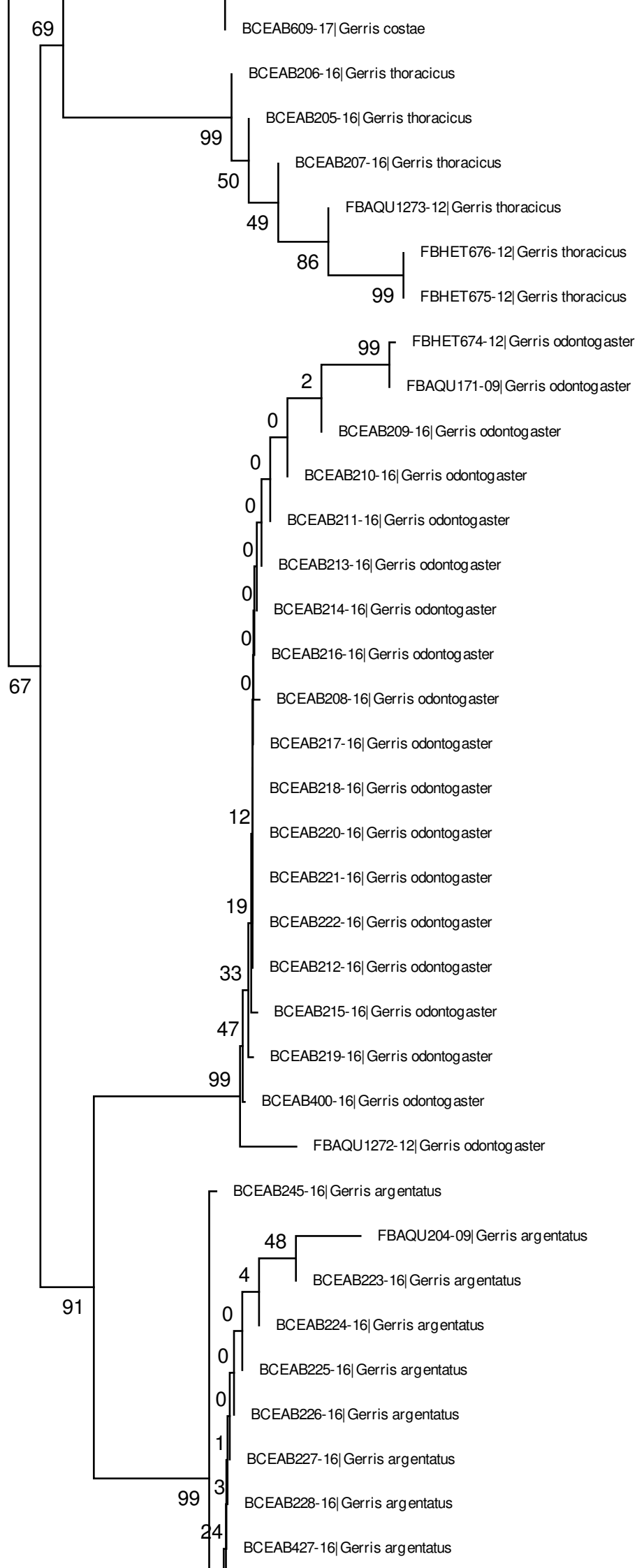


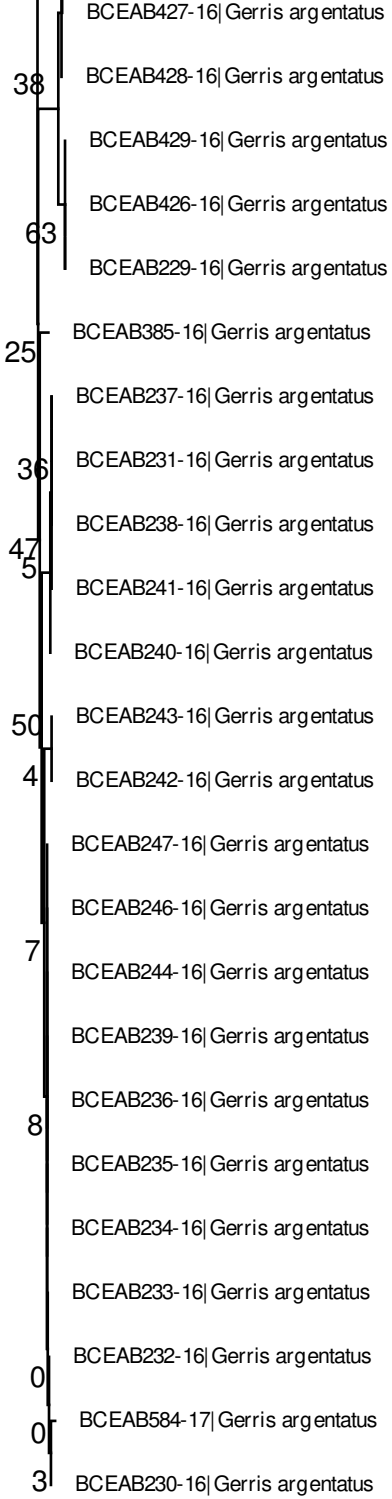












0.020