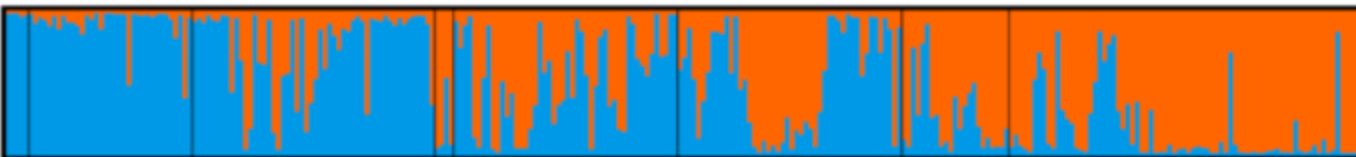


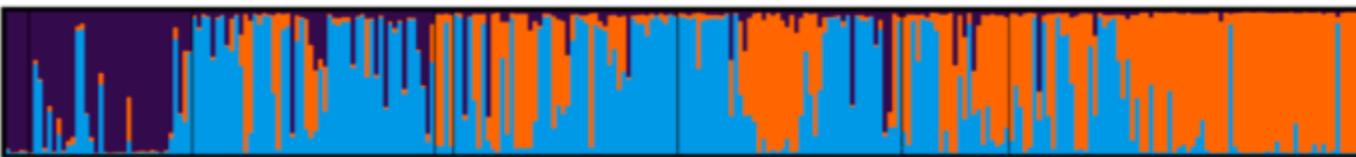
K = 1
Mean(LnProb) = -6876.3



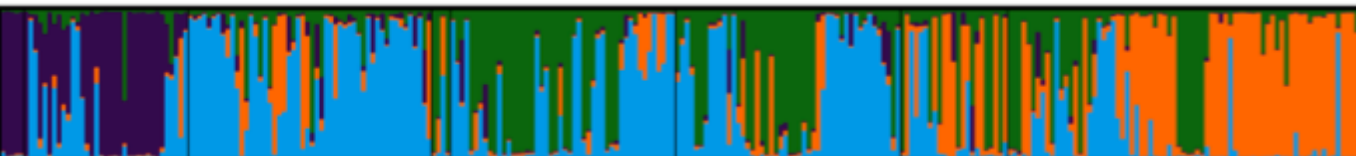
K = 2
Mean(LnProb) = -6320.6



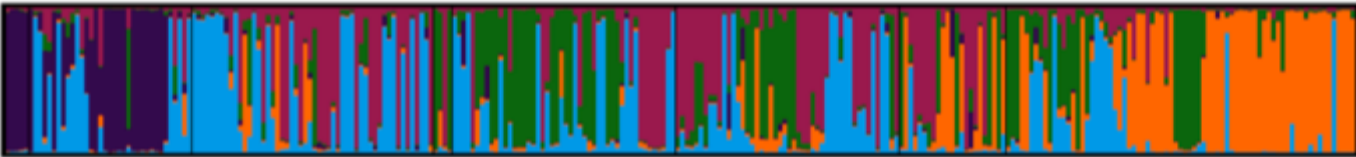
K = 3
Mean(LnProb) = -6006.5



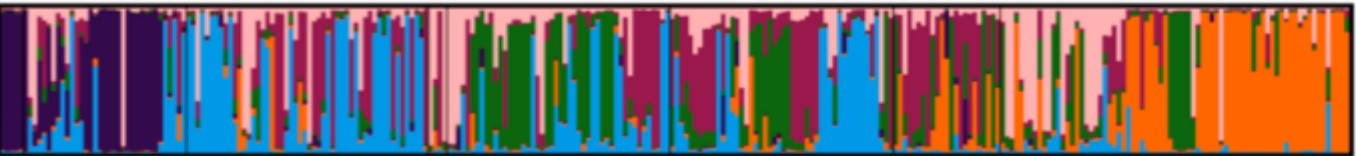
K = 4
Mean(LnProb) = -5738.7



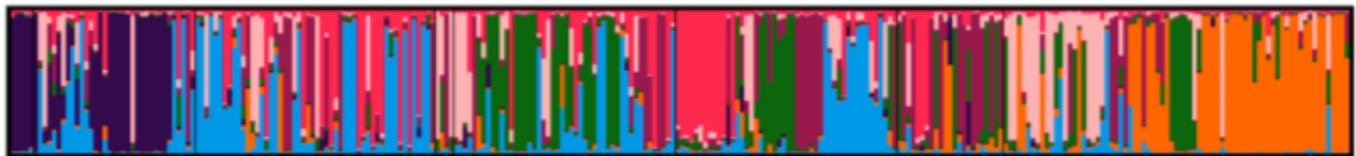
K = 5
Mean(LnProb) = -5522.2



K = 6
Mean(LnProb) = -5400.2



K = 7
Mean(LnProb) = -5256.8



K = 8
Mean(LnProb) = -5185.1

