

Mendoza-Belmontes et al. (2018). Wolf spider burrows from a modern saline sandflat in central Argentina: morphology, taphonomy and clues for recognition of fossil examples. Journal PeerJ.

Additional File: Interactive 3D PDF

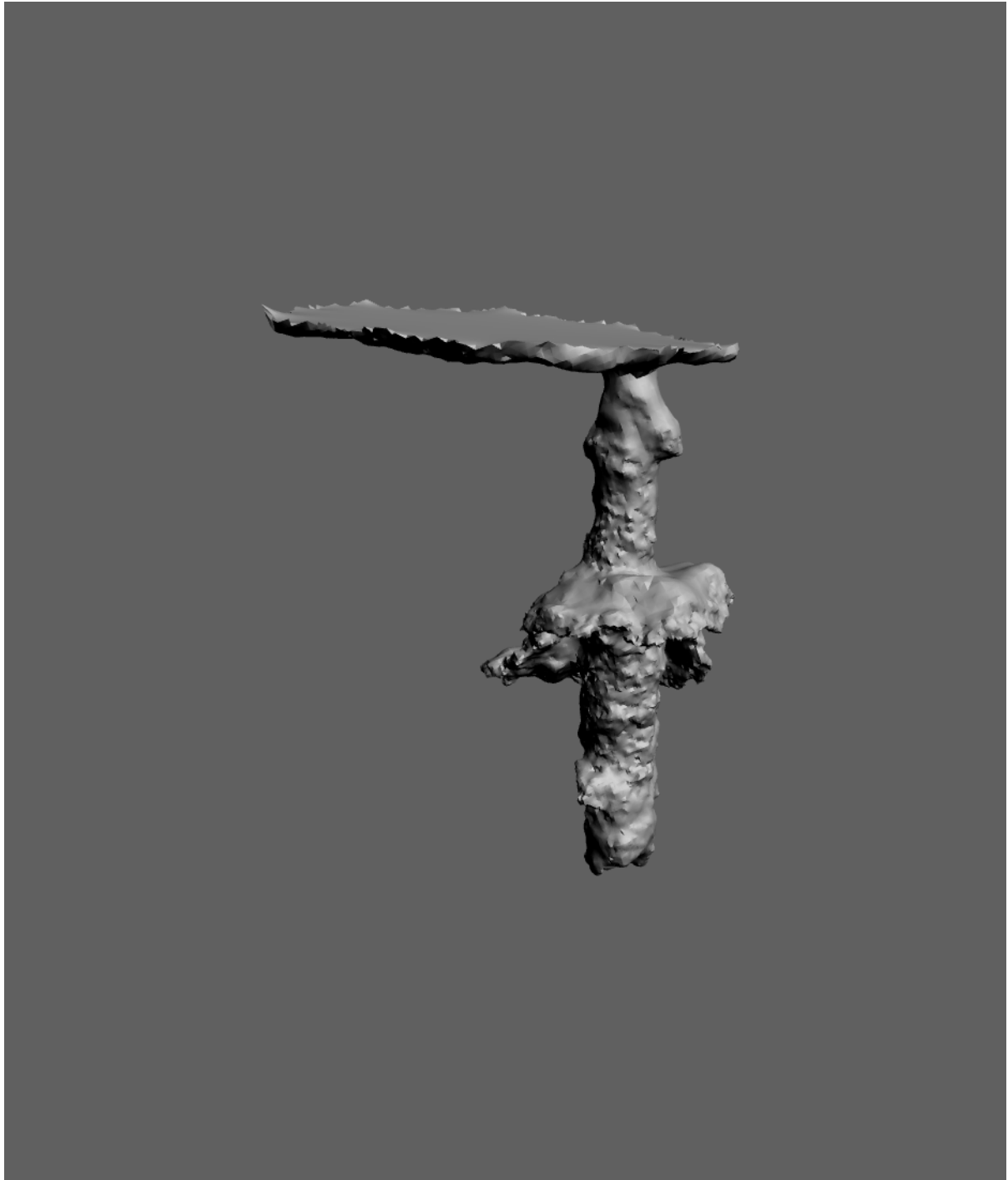


Figure 6. Cast GHUNLPam-4776. Length= 111 mm; Minimum Diameter= 15 mm; Maximum Diameter= 15 mm; Angle= 86°; "Umbrella" Structure Diameter= 47 x 59 mm.