




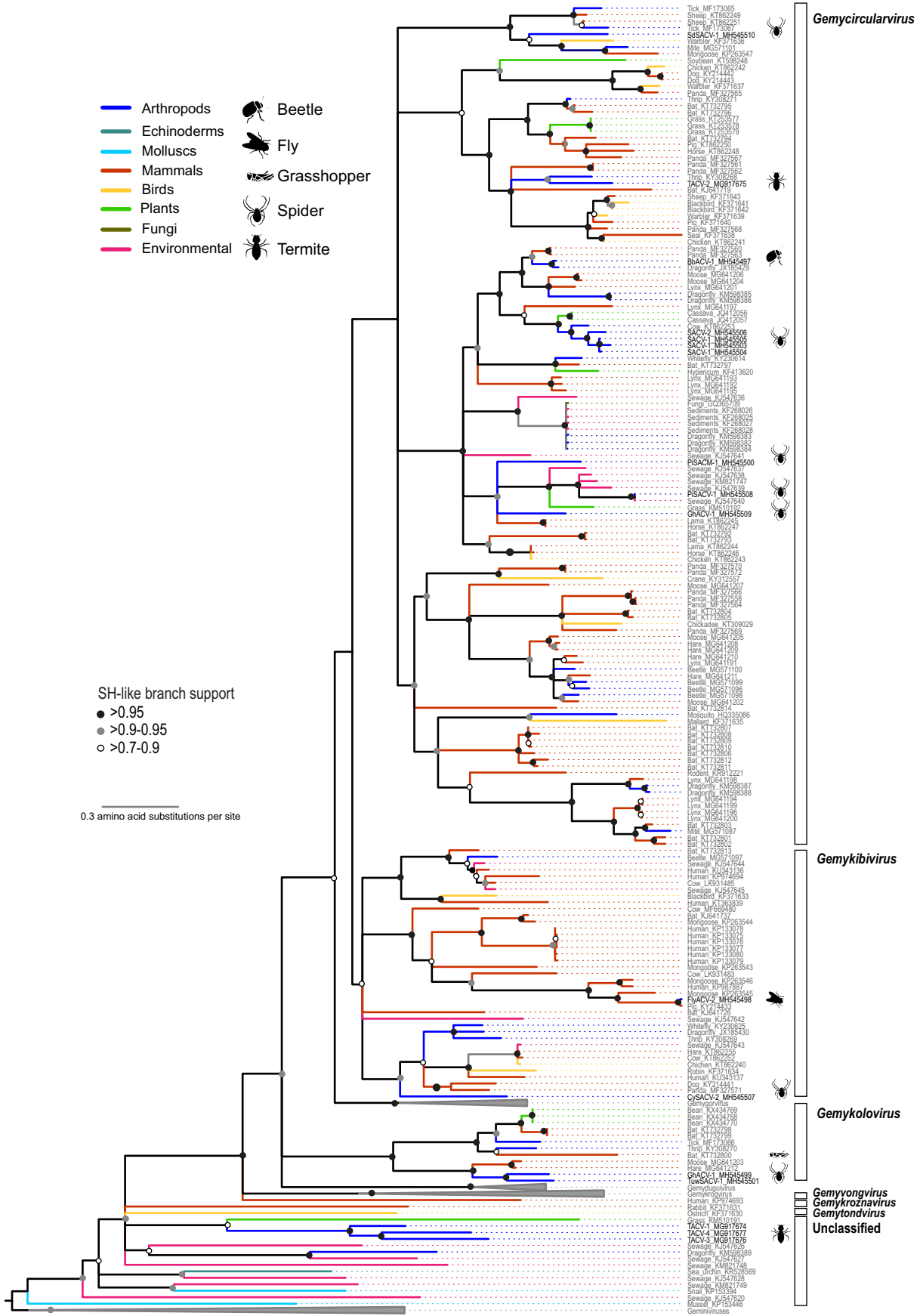


- Arthropods
- Echinoderms
- Molluscs
- Mammals
- Birds
- Plants
- Fungi
- Environmental
-  Beetle
-  Fly
-  Grasshopper
-  Spider
-  Termite

SH-like branch support

- >0.95
- >0.9-0.95
- >0.7-0.9

0.3 amino acid substitutions per site



Gemycirculavirus

Gemykibivirus

Gemykolovirus

Gemyvongvirus

Gemykroznavirus

Gemytondivirus

Unclassified