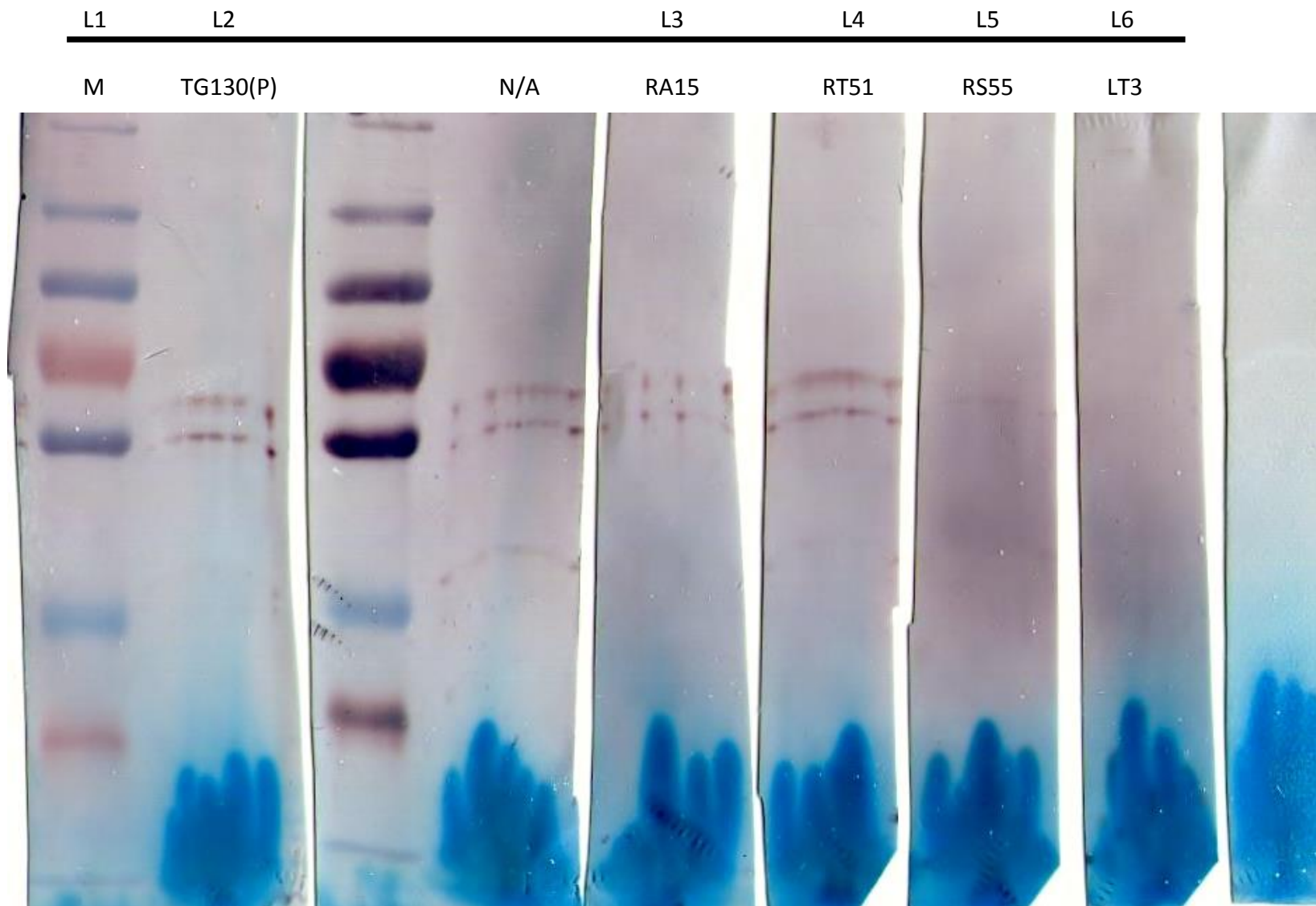


Raw blot of **Figure 5**: Immunoblots of *T. gondii* lysed antigen separated under reducing (R) condition, with the recombinant antibodies used for detection indicated for each blot. L1: marker; L2: TG130(P); L3: RA15; L4: RT51; L5: RS55; L6: LT3.



Raw blot of **Figure 5**: Immunoblots of *T. gondii* lysed antigen separated under non-reducing (NR) condition, with the recombinant antibodies used for detection indicated for each blot. L1: marker; L2: TG130(P); L3: RA15; L4: RT51; L5: RS55; L6: LT3.