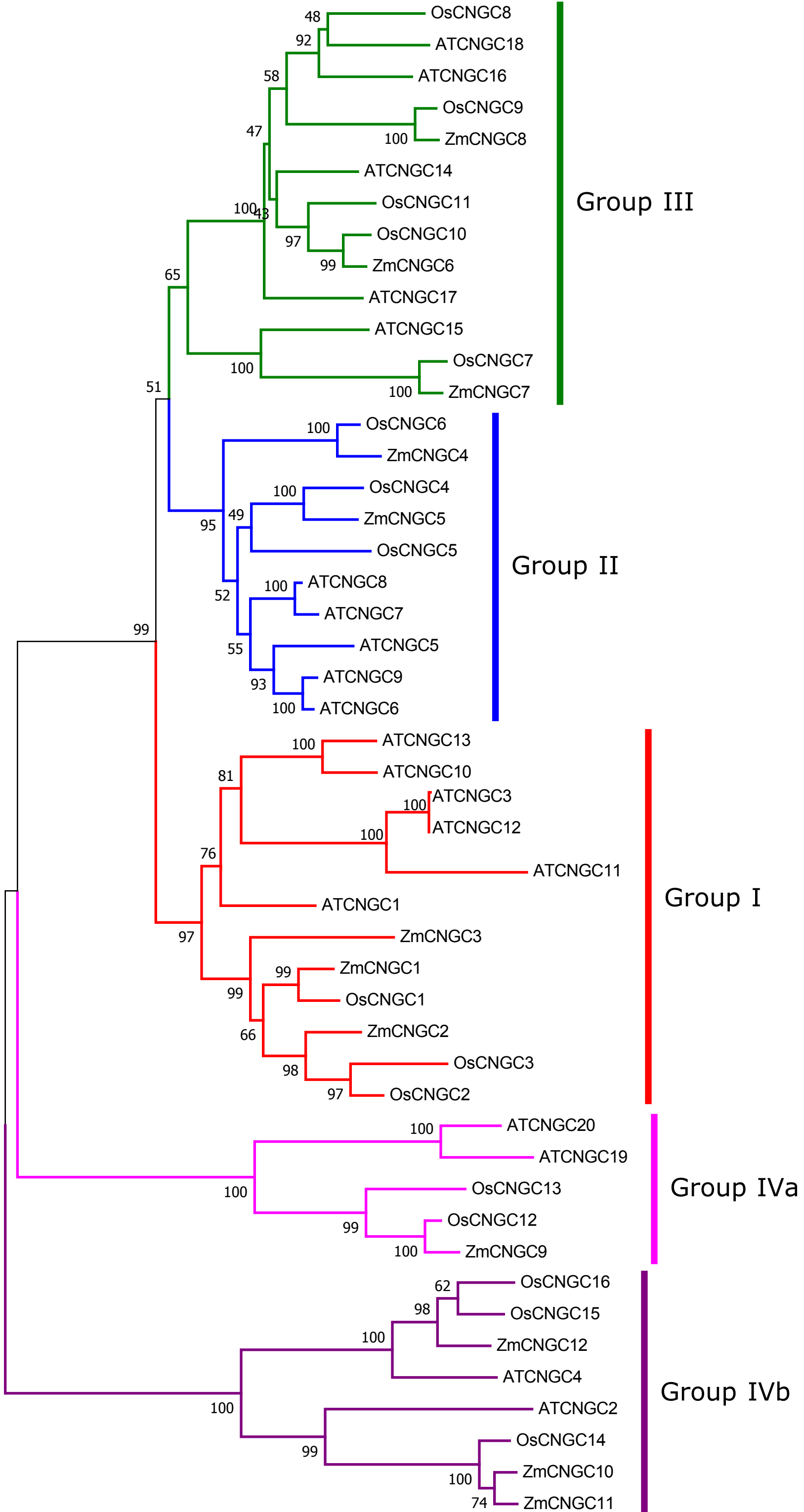


Supplemental File 3

The un-root neighbor joining (NJ) tree based on the maize, rice and *Arabidopsis* CNGCs protein sequences by using MEGA7.

The multiple alignment was performed by ClustalX program. MEGA 7.0 was used to create the neighbor joining (NJ) under the poisson model. The tree was constructed with 1000 bootstrap replications.



0.10