

Figure 4A – part 1

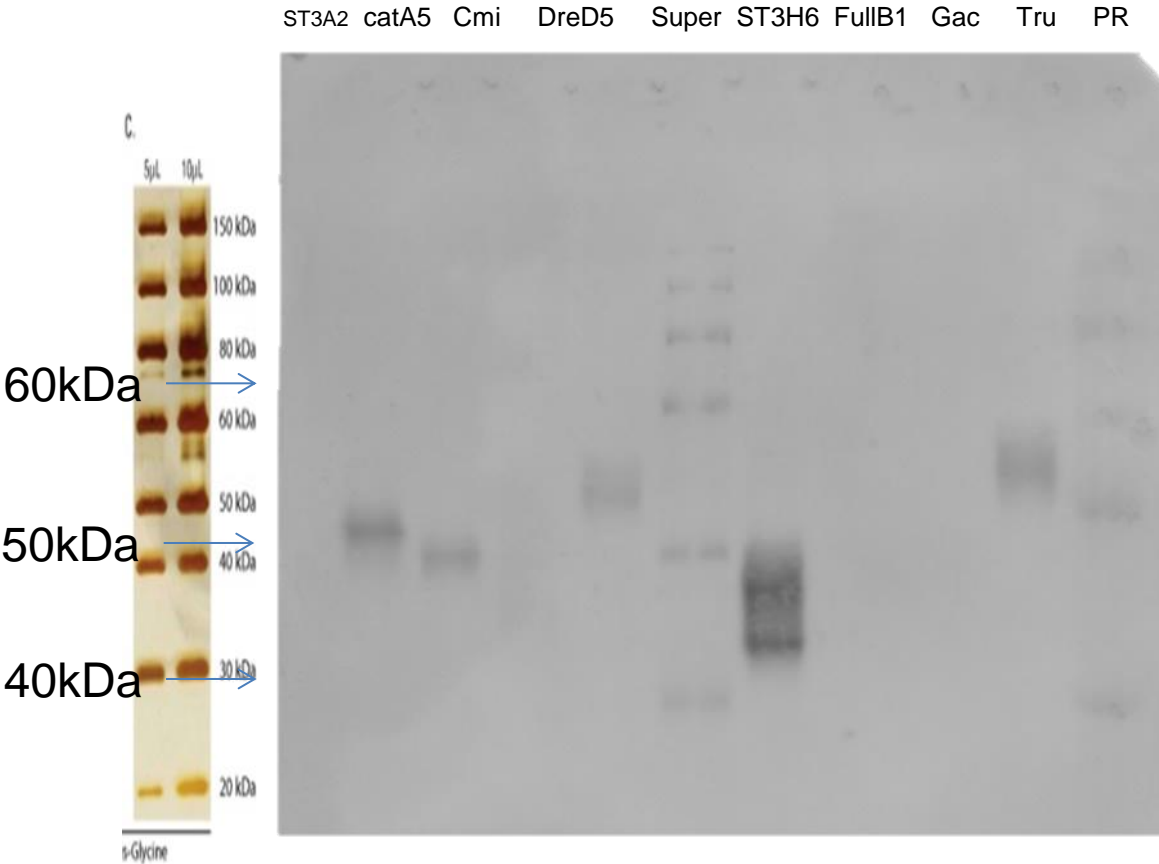


Figure 4A: Uses 6 lanes from this gel

Lane 1 of Fig 4A: See Lane 1 this gel (“ST3A2”)

Lane 2 of Fig 4A: See Lane 5 this gel (“Super”)

Lane 3 of Fig 4A: See Lane 6 this gel (“ST3H6”)

Lane 4 of Fig 4A: See Lane 2 this gel (“catA5”)

Lane 5 of Fig 4A: See Lane 4 this gel (“DreD5”)

Lane 6 of Fig 4A: See Lane 9 this gel (“Tru”)

Lane 7 & 8 of Fig 4A: part 2

Figure 4A: part 2

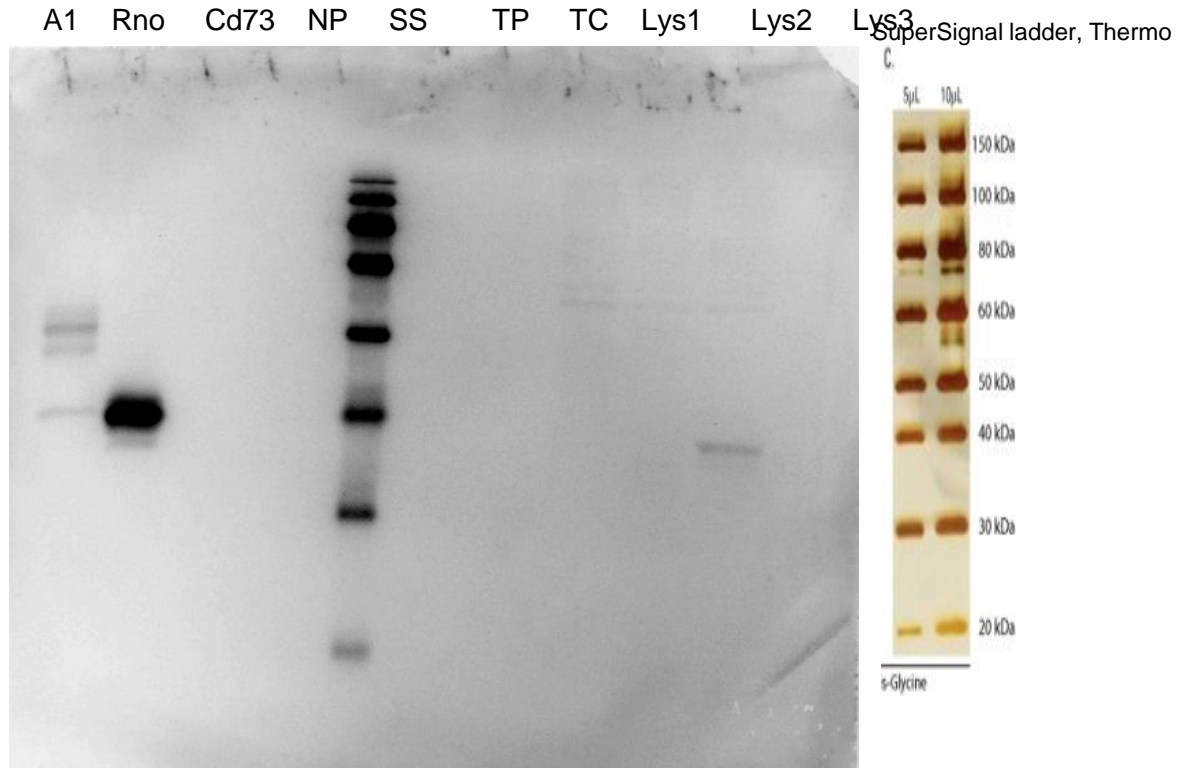


Figure 4A: Uses 2 lanes from this gel

Lane 1-6 of Fig 4A: See part 1

Lane 7 of Fig 4A: See Lane 1 this gel ("A1")

Lane 8 of Fig 4A: See Lane 2 this gel ("Rno")

Markers based on Lane 5 ("SS")

12% SDS-PAGE – 150V for 2h – WB Sigma antiHis-HRP 1/1000 1h rt – Advansta detection

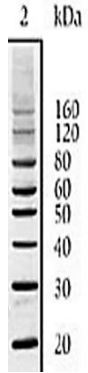
2 min exposure

10 min exposure

BM ladder PNG1 PNG2 CHOB1F1 CHOB2F2

BM ladder PNG1 PNG2 CHOB1F1 CHOB2F2

BenchMark ladder



160

60

50

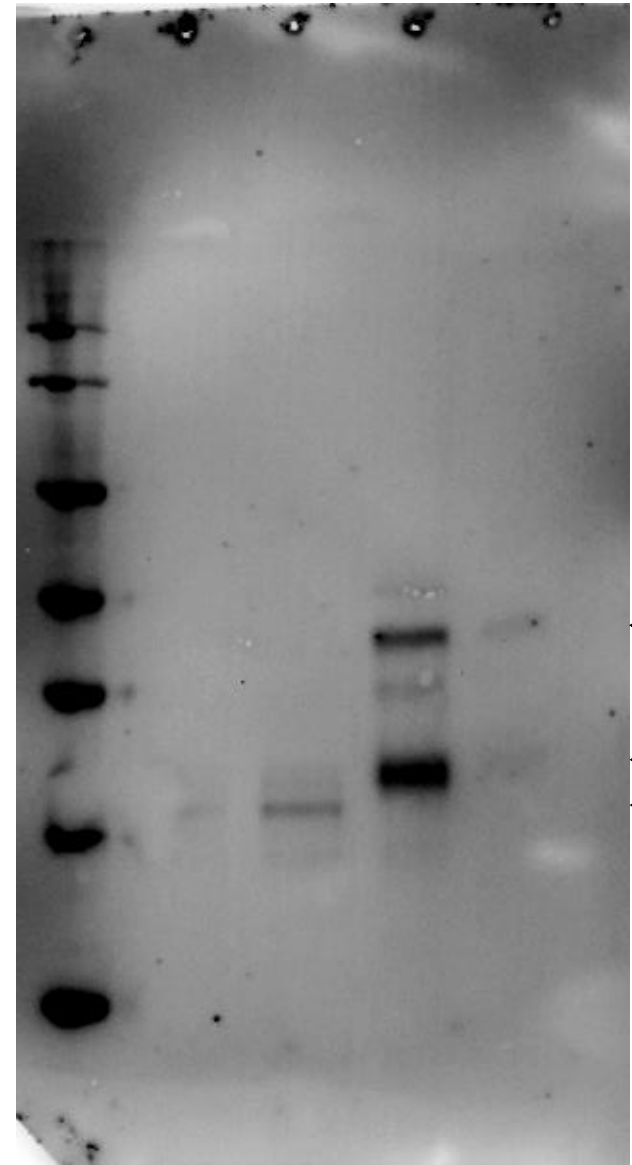
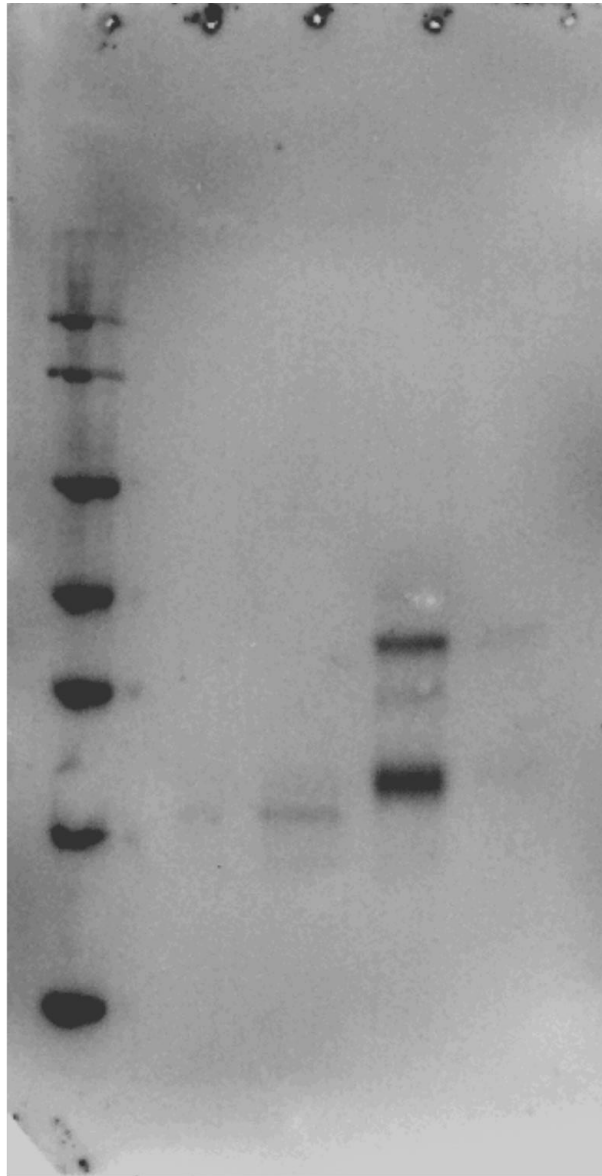
40

160

60

50

40



This is the original for Figure 4B. Two lanes will have been cut from this for the final figure.

Figure 4B: Uses 2 lanes from this gel (Slide 3)

Lane + of Fig 4B: See Lane 3 this gel (10 min, "PNG2")

Lane - of Fig 4B: See Lane 4 this gel (10 min "CHOB1F1")

Markers for Fig 4B: See Lane 1 this gel (10 min "BM ladder")