

SUPPLEMENTAL MATERIALS

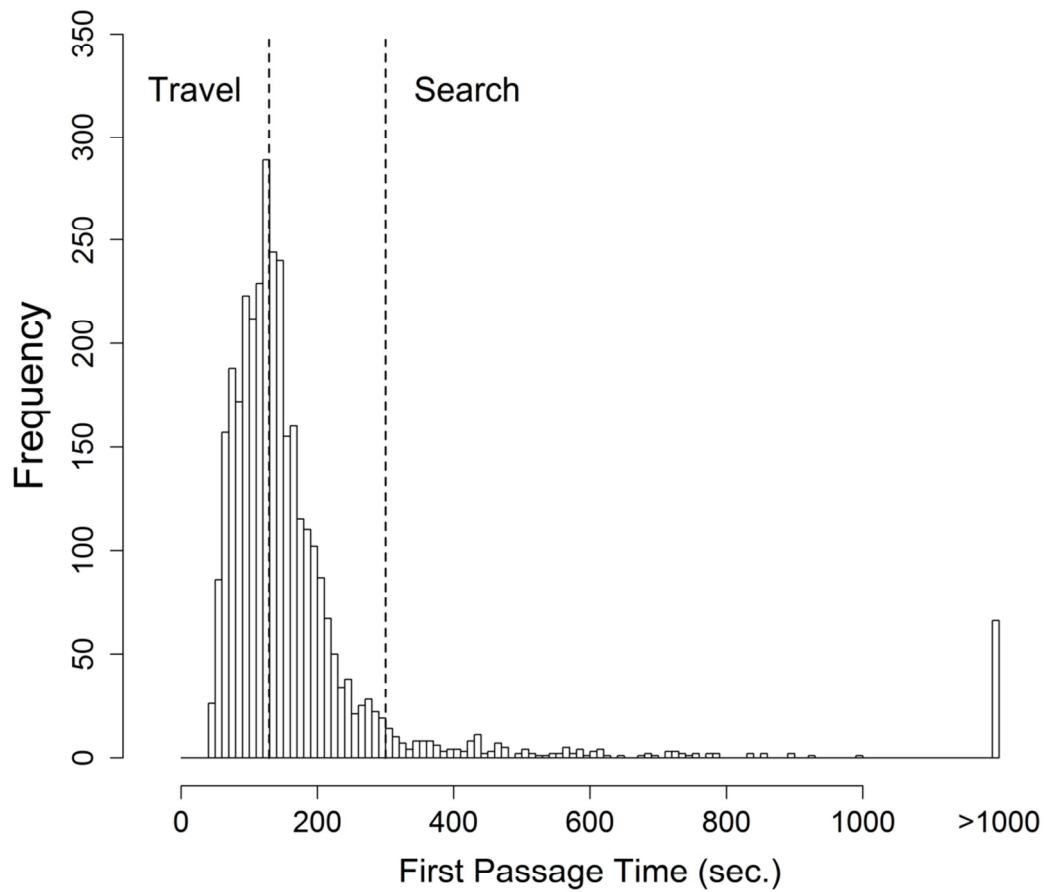


Figure S1. Classification of behaviour of White-tailed Tropicbirds at sea from First-Passage Time (FPT) analysis. Bird behaviour was classified as “search” for FPT values higher than 300 seconds. Among the remaining observations only a half with the lowest FPT values were classified as “travel”. Observations with intermediate FPT values were excluded from analysis.

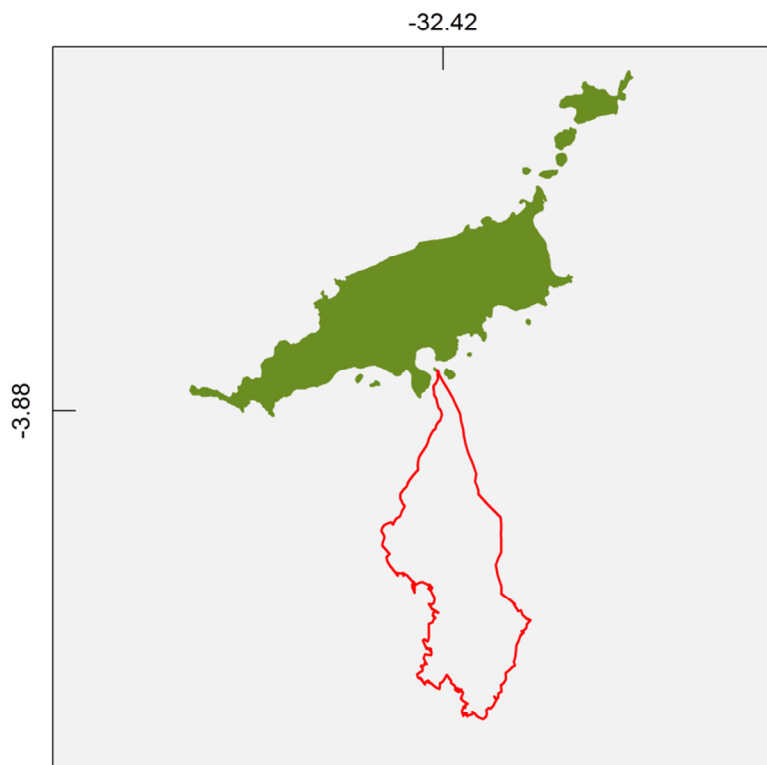
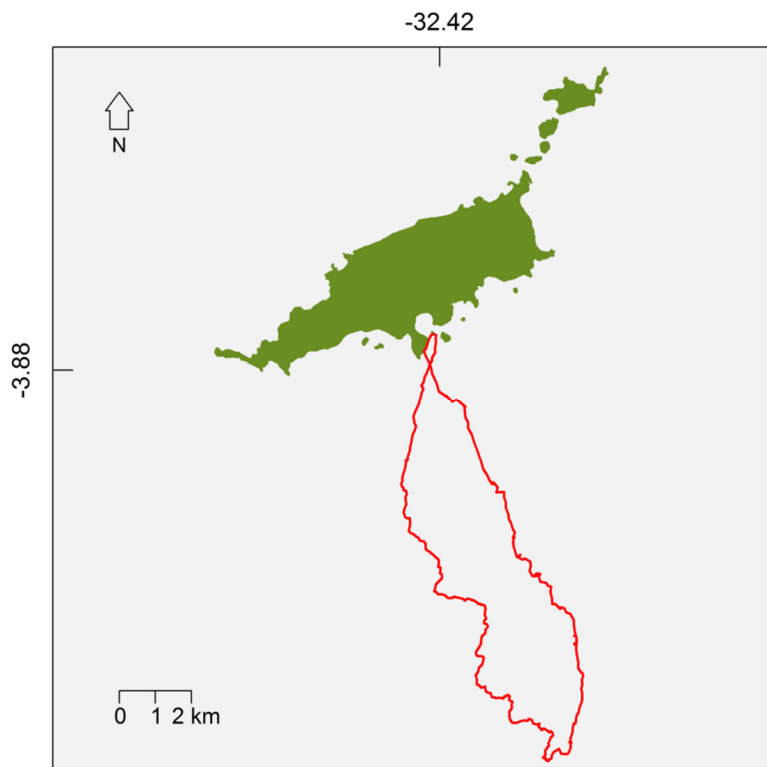


Figure S2. General pattern of White-tailed Tropicbirds foraging trips, illustrated by two tracks recorded with temporal resolution of 0.1 Hz.

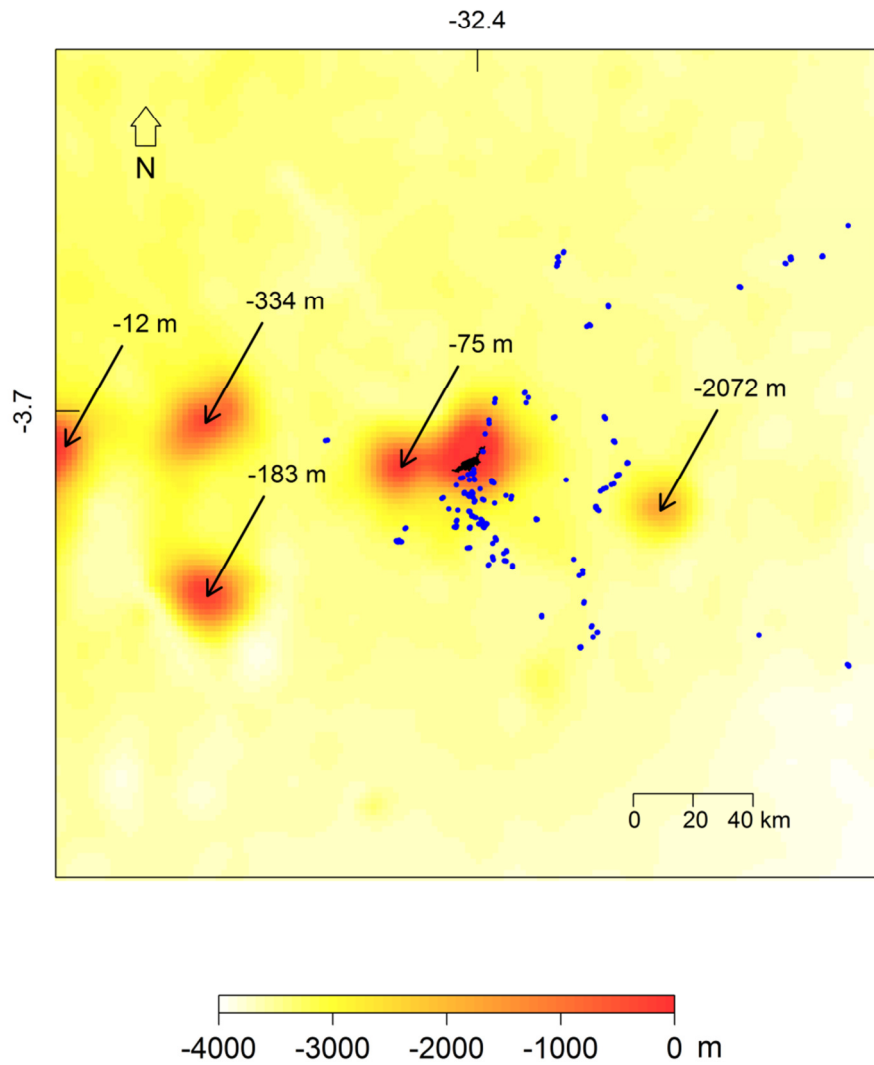


Figure S3. Bathymetry within the range of movements of White-tailed Tropicbirds. Fernando de Noronha archipelago is placed in the image centre in black; blue dots are sampling points where White-tailed Tropicbirds were classified to be searching for food; arrows identify seamounts, with depth above the surface annotated.