

Consensus

1 10 20 30 40 50 60  
A T G T C A G A T A C T T T T T C A A C A A Y G C T C C C C C A G C T C A A G C T T C A A C T A T C T A T T C C T G A A T T A A C T C A G

- 1. KX884399.1\_outgroup
- 2. AF536531.1\_LabIsolates
- 3. JQ320375.1\_China
- 4. JX480861.1\_Israel
- 5. KJ817182.1\_Kenya\_aphids
- 6. KR021407.1\_China
- 7. KX610809.1\_Kenya\_maize
- 8. KX830963.1\_EastTimor
- 9. KX883690.1\_China\_Spider
- 10. KX883929.1\_China\_Odonata
- 11. LN907586.1\_Kenya\_Aphids
- 12. LN907587.1\_Kenya\_Aphid
- 13. LN907588.1\_Kenya\_Aphid
- 14. LN907589.1\_Kenya\_Aphid
- 15. MF458892.1\_Kenya\_Maize
- 16. MF458893.1\_Kenya\_Aphid
- 17. MF795134.1\_China\_Wasp
- 18. MF795135.1\_China\_Aphid
- 19. NC\_004365.1\_LabIsolates
- 20. SRF35\_MK014483\_Kenya\_Comm...

A T G T C A G A A G C T T T T T C A A C G A T G C T C C C C G C C T G G C G C T G C A A C T A T C T A C T C C T G A G A T T A A T C A G  
A T G T C A G G T A C T T T T T C A A C A A C G C T C C C C A G C T C A A G C T T C A A C T A T C T A T T C C T G A G T T A A C T C A G  
A T G T C A G A T A C T T T T T C A A C A A C G C T C C C C A G C T C A A G C T T C A A C T A T C T A T T C C T G A A T T A A C T C A G  
A T G T C A G A A C T T T T T C A A T G A T G C T C C C A C G T C T G G C G C T T C A A C T A T C T A C T C C T G A A A T T A A T C A G  
A T G T C A G A G G C T T T T T C A A A G A T G C T C C C C A A C T G A A C A T C C A A C T C T C T A T T C C T G A A A T T G A T C A G  
A T G T C A G A T A C T T T T T C A A C A A C G C T C C C C A G C T C A A G C T T C A A C T A T C T A T T C C T G A A T T A A C T C A G  
A T G T C A G A A C T T T T T C A A C G A T G C T C C C A C G T C T G A A C A T C C A A C T C T C T A T T C C T G A A A T T G A T C A G  
A T G T C A G G T A C T T T T T C A A C A A C G C T C C C C A G C T C A A G C T T C A A C T A T C T A T T C C T G A A T T A A C T C A G  
A T G T C A G G T A C T T T T T C A A C A A C G C T C C C C A G C T C A A G C T T C A A C T A T C T A T T C C T G A A T T A A C T C A G  
A T G T C A G A T A C T T T T T C A A C A A C G C T C C C C A G C T C A A G C T T C A A C T A T C T A T T C C T G A A T T A A C T C A G  
A T G T C A G A A C T T T T T C A A T G A T G C T C C C A C G T C T G G C G C T T C A A C T A T C T A C T C C T G A A A T T A A T C A G  
A T G T C A G A A C T T T T T C A A T G A T G C T C C C A C G T C T G G C G C T T C A A C T A T C T A C T C C T G A A A T T A A T C A G  
A T G T C A G A A C T T T T T C A A T G A T G C T C C C A C G T C T G G C G C T T C A A C T A T C T A C T C C T G A A A T T A A T C A G  
A T G T C A G A A C T T T T T C A A T G A T G C T C C C A C G T C T G G C G C T T C A A C T A T C T A C T C C T G A A A T T A A T C A G  
A T G T C A G G T A C T T T T T C A A C A A C G C T C C C C A G C T C A A G C T T C A A C T A T C T A T T C C T G A A T T A A C T C A G  
A T G T C A G A A C T T T T T C A A T G A T G C T C C C A C G T C T G G C G C T T C A A C T A T C T A C T C C T G A A A T T A A T C A G  
A T G T C A G G T A C T T T T T C A A C A A T G C T C C C C A G C T C A A G C T T C A A C T A T C T A T T C C T G A A T T A A C T C A G  
A T G T C A G G T A C T T T T T C A A C A A C G C T C C C C A G C T C A A G C T T C A A C T A T C T A T T C C T G A A T T A A C T C A G  
A T G T C A G G T A C T T T T T C A A C A A C G A T C C C T C A G C T C A A G C T T C A A C T A T C T A T T C C T G A A T T A A C T C A G

Consensus

70 80 90 100 110 120 130  
C T A A A G A T A C G C G A T G C C C A A G C A C A C G A A A A A C C A C G A C T T G T T G C T C A A T T G A C T C G G T C T R C T C T A

- 1. KX884399.1\_outgroup
- 2. AF536531.1\_LabIsolates
- 3. JQ320375.1\_China
- 4. JX480861.1\_Israel
- 5. KJ817182.1\_Kenya\_aphids
- 6. KR021407.1\_China
- 7. KX610809.1\_Kenya\_maize
- 8. KX830963.1\_EastTimor
- 9. KX883690.1\_China\_Spider
- 10. KX883929.1\_China\_Odonata
- 11. LN907586.1\_Kenya\_Aphids
- 12. LN907587.1\_Kenya\_Aphid
- 13. LN907588.1\_Kenya\_Aphid
- 14. LN907589.1\_Kenya\_Aphid
- 15. MF458892.1\_Kenya\_Maize
- 16. MF458893.1\_Kenya\_Aphid
- 17. MF795134.1\_China\_Wasp
- 18. MF795135.1\_China\_Aphid
- 19. NC\_004365.1\_LabIsolates
- 20. SRF35\_MK014483\_Kenya\_Comm...

T T G A A G A T A C G T G A T G C C C A G A C T C A G G A A A A A C C A C G A C T T G T T G C G C A A T T G A C T C G C T C T G C C C T T  
C T A A A G A T A C G C G A T G C C C A A G C A C A C G A A A A A C C A A G A A T T G T T G C T C A A T T A A C T A G A T C T A C T C T A  
C T A A A G A T A C G T G A T G C C C A A G C A C A C G A A A A A C C A C G A C T T G T T G C T C A A T T G A C T C G G T C T A C T C T A  
C T G A A G A T A C G T G A T G C A C A G G C A C A T G A A C A A C C A C G A A T T G T T G C A C A A T T G A C T C G C T C G G C T C T T  
C T A A A G A A A C G C G A T G T C C A A A C A A T G G A A T C T C C A C G A T T T G T T C C T C A A A T T T C T C A A T C T G C T C T T  
C T A A A G A T A C G C G A T G C C C A A G C A C A C G A A A A A C C A C G A C T T G T T G C T C A A T T G A C T C G G T C T A C T C T A  
C T A A A G A A A C G C G A T G T C C A A A C A A A T G G A A T C T C C A C G A T T T G T T C C A C A A A T G A C T C A A T C A G C T C T T  
C T A A A G A T A C G C G A T G C C C A A G C A C A C G A A A A A C C T C G A C T T G T T G C T C A A T T G A C T C G G T C T A C T C T A  
C T A A A G A T A C G C G A T G C C C A A G C A C A C G A A A A A C C A C G A C T T G T T G C T C A A T T G A C T C G G T C T A C T C T A  
C T G A A G A T A C G C G A T G C A C A G G C A C A C G A A C A A C C A C G A A T T G T T G C A C A A T T G A C T C G T T C G G C T C T T  
C T G A A G A T A C G C G A T G C A C A G G C A C A C G A A C A A C C A C G A A T T G T T G C A C A A T T G A C T C G T T C G G C T C T T  
C T G A A G A T A C G C G A T G C A C A G G C A C A C G A A C A A C C G C G A A T T G T T G C A C A A T T G A C T C G T T C G G C T C T T  
C T A A A G A T A C G C G A T G C C C A A G C A C A C G A A A A A C C A C G A C T T G T T G C T C A A T T G A C T C G G T C T G C T C T A  
T T A A A G A T A C G C G A T G C A C A G G C A C A C G A A C A A C C A C G A A T T G T T G C A C A A T T G A C T C G T T C G G C T C T T  
C T A A A G A T A C G C G A T G C C C A A G C A C A C G A A A A A C C A C G A C T T G T T G C T C A A T T G A C T C G G T C T A C T C T A  
C T A A A G A T A C G C G A T G C C C A A G C A C A C G A A A A A C C A C G A C T T G T T G C T C A A T T G A C T C G G T C T A C C C T A  
C T A A A G A T A C G C G A T G C C C A A G C A C A C G A A A A A C C A A G A A T T G T T G C T C A A T T A A C T A G A T C T A C T C T A  
C T A A A G A T A C G C G A T G C C C A A G C A C A C G A A A A A C C A C G A C T T G T T G C T C A A T T G A C T C G G T C T A C T C T A

140 150 160 170 180 190 200  
Consensus G A G A A C A T G A A T A A T A Y T T A C A T T A T G A C T G A A C C C C T A G A T G C T A T T C C C G A G A A T A C A T T G C G C A A A

Consensus

1. KX884399.1\_outgroup
2. AF536531.1\_LabIsolates
3. JQ320375.1\_China
4. JX480861.1\_Israel
5. KJ817182.1\_Kenya\_aphids
6. KR021407.1\_China
7. KX610809.1\_Kenya\_maize
8. KX830963.1\_EastTimor
9. KX883690.1\_China\_Spider
10. KX883929.1\_China\_Odonata
11. LN907586.1\_Kenya\_Aphids
12. LN907587.1\_Kenya\_Aphid
13. LN907588.1\_Kenya\_Aphid
14. LN907589.1\_Kenya\_Aphid
15. MF458892.1\_Kenya\_Maize
16. MF458893.1\_Kenya\_Aphid
17. MF795134.1\_China\_Wasp
18. MF795135.1\_China\_Aphid
19. NC\_004365.1\_LabIsolates
20. SRF35\_MK014483\_Kenya\_Comm...

A A C A A C A T G A A T A A T G T T T A C A T T A T G A C T G A T G T T T T A G A T G C A A T T C C T G A G A A C A C A T T G C G T A A A  
G A G A A C A T G A A T A A T A C T T A T A T T A T G A C T G A A C C C T T A G A T G C T A T T C C T G A G A A T A C A T T G C G C A A A  
G G G A A T A T G A A T A A T T T T A T A T T A T G A C T A A A C C C T T A G A T G C T A T T C C T G A G A A T A C A T T G C G C A A A  
G A G A A T A T G A A T A A T G T T T A C A T T A T G A C T G A T T C T C T T G A T G C T C T A C C C G A G A A T A C A T T G C G C A A A  
A A C A A C A T G A A T A A T G T T T A C A T T A T G A C T G A A G T T A A C G A A A T G A T T C C A G A A A A T A C T T T G A G G A A A  
G G G A A T A T G A A T A A T A C T T A T A T T A T G A C T A A A C C C T T A G A T G C T A T T C C T G A G A A T A C A T T G C G C A A A  
A A C A A C A T G A A T A A T G T T T A C A T T A T G A C T G A T A G C T T A G A T G C A A T C C C A G A A A A T A C A T T G A G C A A A  
G G G A A C A T G A A T A A T A C T T A C A T T A T G A C T G A A C C C T T A G A T G C T A T T C C T G A G A A T A C A T T G C G C A A A  
G G G A A C A T G A A T A A T A C T T A C A T T A T G A C T G A A C C C C T A G A T G G T A T T C C C G A A A A T A C A T T G C G C A A A  
G G G A A T A T G A A T A A C A C T T A T A T T A T G A C T A A A C C C T T A G A T G C T A T T C C T G A G A A T A C A T T G C G C A A A  
G A G A A C A T G A A T A A T G T T T A C A T T A T G A C T G A T T C T C T T G A T G C T A T A C C C G A G A A T A C A T T G C G T A G A  
G A G A A C A T G A A T A A T G T T T A C A T T A T G A C T G A T T C T C T T G A T G C T A T A C C C G A G A A T A C A T T G C G T A G A  
G A G A A C A T G A A T A A T G T T T A C A T T A T G A C T G A T T C T C T T G A T G C T A T A C C C G A G A A T A C A T T G C G T A G A  
G A G A A C A T G A A T A A T G T T T A C A T T A T G A C T G A T T C T C T T G A T G C T A T A C C C G A G A A T A C A T T G C G T A G A  
G G G A A C A T G A A T A A T C T T A C A T T A T G A C T G A A C C C C T A G A T G G T A T T C C T G A G A A T A C A T T G C G C A A A  
G A G A A C A T G A A T A A T C T T A T A T T A T G A C T G A A C C C T T A G A T G G T A T T C C C G A A A A T A C A T T G C G C A A A  
G G G A A C A T G A A T A A T C T T A C A T T A T G A C T G A A C C C C T A G A T G G T A T T C C C G A A A A T A C A T T G C G C A A A  
G G G A A C A T G A A T A A T C T T A C A T T A T G A C T G A A C C C C T A G A T G G T A T T C C C G A G A A T A C A T T G C G C A A A

210 220 230 240 250 260 270  
Consensus C A A G T T T T G G C T T A T A T A A C G G A A T T T A A T G A A T C A C A T A A C G G T G T T T C T C G C C C A A G T C G T A T T G C T

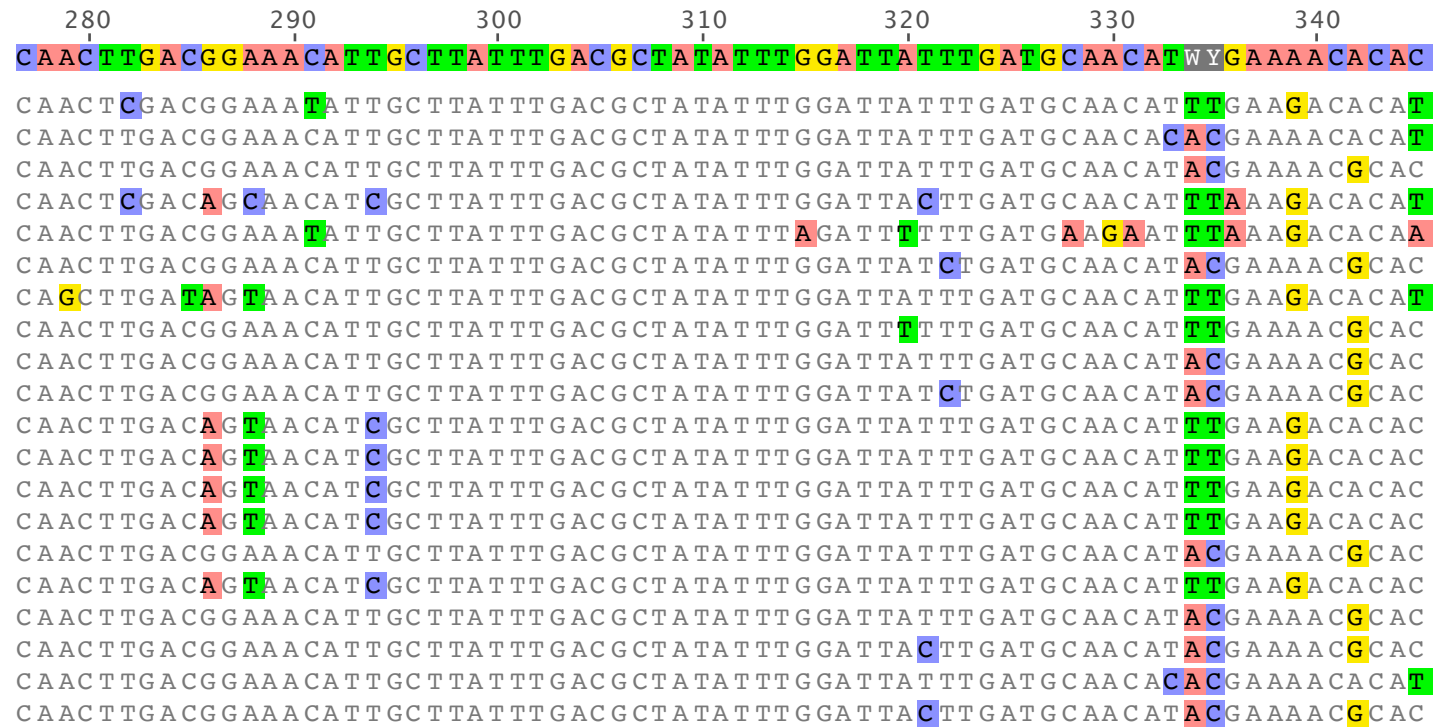
Consensus

1. KX884399.1\_outgroup
2. AF536531.1\_LabIsolates
3. JQ320375.1\_China
4. JX480861.1\_Israel
5. KJ817182.1\_Kenya\_aphids
6. KR021407.1\_China
7. KX610809.1\_Kenya\_maize
8. KX830963.1\_EastTimor
9. KX883690.1\_China\_Spider
10. KX883929.1\_China\_Odonata
11. LN907586.1\_Kenya\_Aphids
12. LN907587.1\_Kenya\_Aphid
13. LN907588.1\_Kenya\_Aphid
14. LN907589.1\_Kenya\_Aphid
15. MF458892.1\_Kenya\_Maize
16. MF458893.1\_Kenya\_Aphid
17. MF795134.1\_China\_Wasp
18. MF795135.1\_China\_Aphid
19. NC\_004365.1\_LabIsolates
20. SRF35\_MK014483\_Kenya\_Comm...

C A A G T C T T G G C G T A T A T A A C A G A A T T T A A T G A A T C A C A T A A C G G T A T T T C T C G T C C G A G T C G T A T T G C T  
C A A G T T T T G G C T T A C A T A A C G G A A T T T A A T G A A T C A C A T A A C G G T G T T T C T C G T C C A A G T C G T A T T G C T  
C A A G T T T T G G C T T A T A T A A C G G A A T T T A A T C A A T C A C A T A A C G G T G T T T C T C G C C A A G T C G T A T T G C T  
C A A G T C C T G G C T T A T A T T A C G G A A T T T A A T G A A T C T C A T A A C G G T G T C G C T C G C C A A G T C G T A T T G C A  
C A A G T T T T G G C G T A T A T A A C G G A A T T T A A T A C T T C A A C T A A C G G T A T C T C A C G T C C T A G T C G T A T T G C A  
C A A G T T T T G G C T T A T A T A A C G G A A T T T A A T C A A T C A C A T A A C G G T G T T T C T C G C C A A G T C G T A T T G C T  
C A A G T T T T G G C G T A C A T A A C G G A A T T T A A T G A A T C A C A T A A C G G T G T T A C T C G T C C A A G C C G T A T T G C A  
C A A G T T C T A G C T T A C A T A A C G G A A T T T A A T G A A T C A C A T A A C G G T G T T T C T C G T C C T T G T C G T A T T G C T  
C A A G T T T T G G C T T A C A T A A C G G A A T T T A A T G A A T C A C A T A A C G G T G T T T C T C G C C A A G T C G T A T T G C T  
C A A G T T T T G G C T T A T A T A A C G G A A T T T A A T C A A T C A C A T A A C G G T G T T T C T C G C C A A G T C G T A T T G C T  
C A A G T C T T G G C T T A T A T T A C G G A A T T T A A T G A A T C T C A T A A C G G T G T T G C T C G C C A A G T C G T A T T G C A  
C A A G T C T T G G C T T A T A T T A C G G A A T T T A A T G A A T C T C A T A A C G G T G T T G C T C G C C A A G T C G T A T T G C A  
C A A G T C T T G G C T T A T A T T A C G G A A T T T A A T G A A T C T C A T A A C G G T G T T G C T C G C C A A G T C G T A T T G C A  
C A A G T T T T G G C T T A C A T A A C G G A A T T T A A T G A A T C A C A T A A C G G T G T T T C T C G T C C A A G T C G T A T T G C T  
C A A G T C T T G G C T T A T A T T A C G G A A T T T A A T G A A T C T C A T A A C G G T G T T G C T C G C C A A G T C G T A T T G C A  
C A A G T T T T G G C T T A C A T A A C G G A A T T T A A T G A A T C A C A T A A C G G T G T T T C T C G C C A A G T C G T A T T G C T  
C A A G T T T T G G C T T A C A T A A C G G A A T T T A A T G A A T C A C A T A A C G G T G T T T C T C G C C A A G T C G T A T T G C T  
C A A G T T T T G G C T T A C A T A A C G G A A T T T A A T G A A T C A C A T A A C G G T G T T T C T C G C C A A G T C G T A T T G C T  
C A A G T T T T G G C T T A C A T A A C G G A A T T T A A T G A A T C A C A T A A C G G T G T T T C T C G C C A A G T C G T A T T G C T

Consensus

1. KX884399.1\_outgroup
2. AF536531.1\_LabIsolates
3. JQ320375.1\_China
4. JX480861.1\_Israel
5. KJ817182.1\_Kenya\_aphids
6. KR021407.1\_China
7. KX610809.1\_Kenya\_maize
8. KX830963.1\_EastTimor
9. KX883690.1\_China\_Spider
10. KX883929.1\_China\_Odonata
11. LN907586.1\_Kenya\_Aphids
12. LN907587.1\_Kenya\_Aphid
13. LN907588.1\_Kenya\_Aphid
14. LN907589.1\_Kenya\_Aphid
15. MF458892.1\_Kenya\_Maize
16. MF458893.1\_Kenya\_Aphid
17. MF795134.1\_China\_Wasp
18. MF795135.1\_China\_Aphid
19. NC\_004365.1\_LabIsolates
20. SRF35\_MK014483\_Kenya\_Comm...



Consensus

1. KX884399.1\_outgroup
2. AF536531.1\_LabIsolates
3. JQ320375.1\_China
4. JX480861.1\_Israel
5. KJ817182.1\_Kenya\_aphids
6. KR021407.1\_China
7. KX610809.1\_Kenya\_maize
8. KX830963.1\_EastTimor
9. KX883690.1\_China\_Spider
10. KX883929.1\_China\_Odonata
11. LN907586.1\_Kenya\_Aphids
12. LN907587.1\_Kenya\_Aphid
13. LN907588.1\_Kenya\_Aphid
14. LN907589.1\_Kenya\_Aphid
15. MF458892.1\_Kenya\_Maize
16. MF458893.1\_Kenya\_Aphid
17. MF795134.1\_China\_Wasp
18. MF795135.1\_China\_Aphid
19. NC\_004365.1\_LabIsolates
20. SRF35\_MK014483\_Kenya\_Comm...

