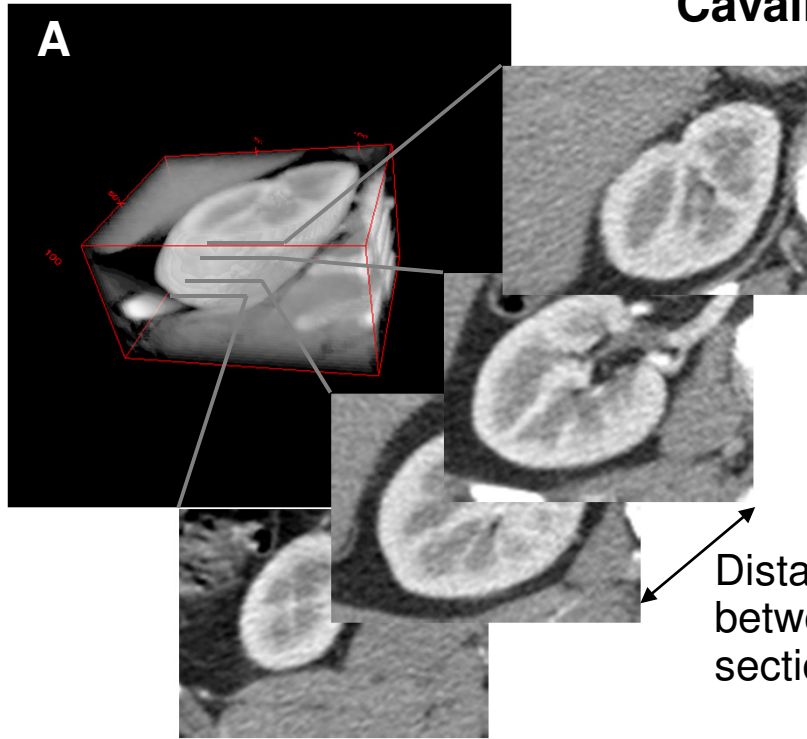


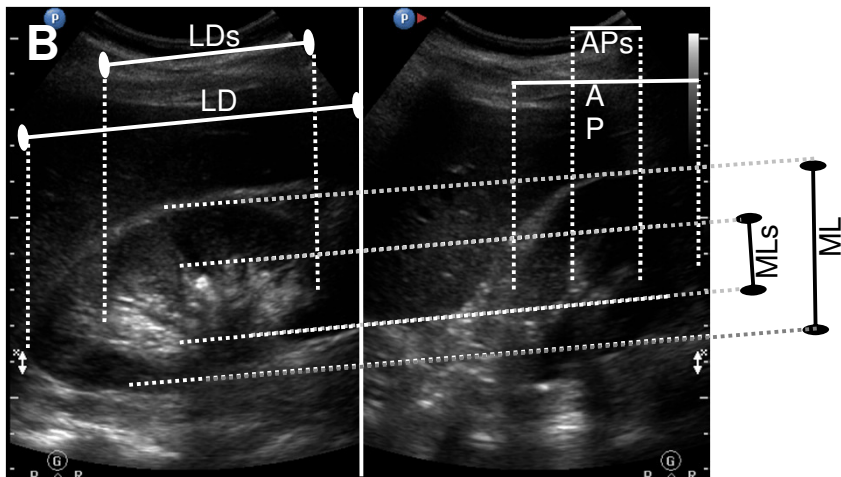
Cavalieri's principle



$$\sum \text{Total area} = \text{Total Kidney volume}$$

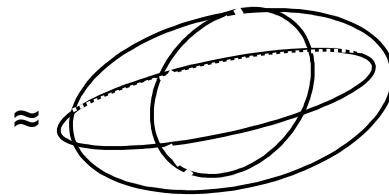
$$\sum \text{Parenchyma area} = \text{Kidney Parenchyma Volume}$$

$$\times \sum \text{Cortex area} = \text{Kidney Cortex Volume}$$



Longitudinal (coronal) section

Transversal (horizontal) section



Ellipsoid formula:
 $V = \frac{4}{3} \times \pi \times LD \times ML \times AP$

Ellipsoid KV3 formula:
 $84 + 1.01 \times \pi/24 \times LD \times (ML + AP)^2$

Kidney cortex volume =
 $0.7 \times (\text{Total kidney volume} - \text{renal sinus volume})$