

Tree scale: 1

Bacteroidetes classes

- Bacteroidia
- Cytophagia
- Flavobacteriia
- Chitinophagia
- Sphingobacteriia
- Incertae sedis
- Saprospiria
- Unclassified

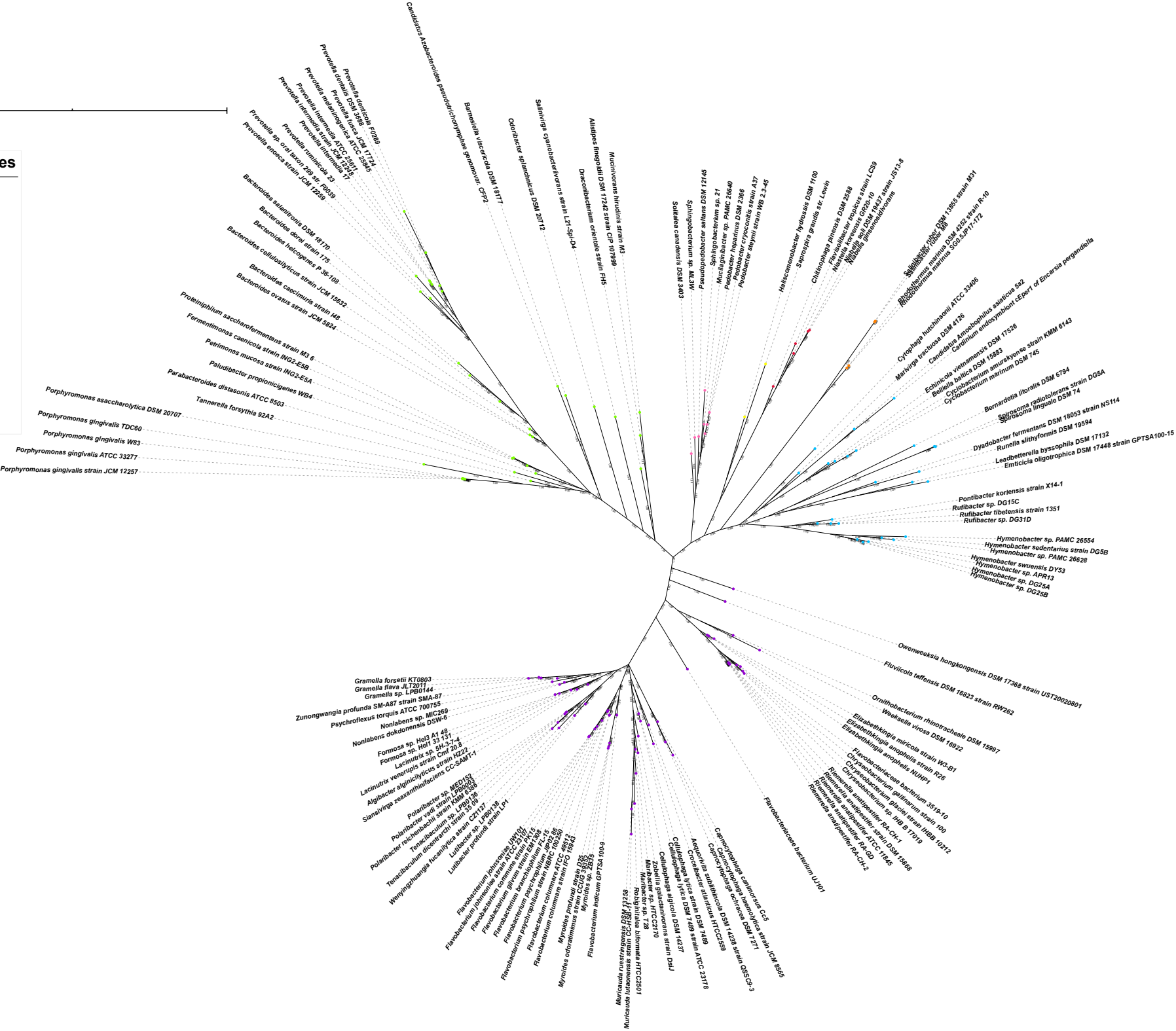


Figure S21: The BI tree of 16S rRNA with terminal nodes labelled with its corresponding species.