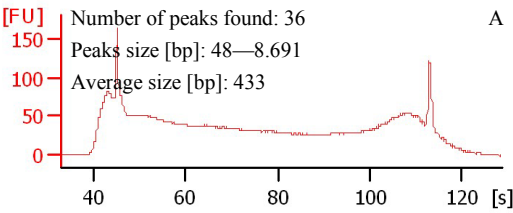
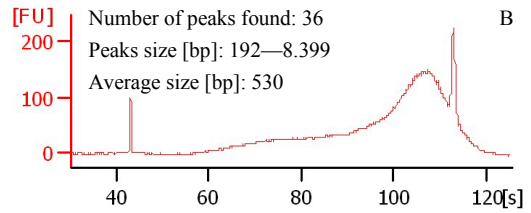


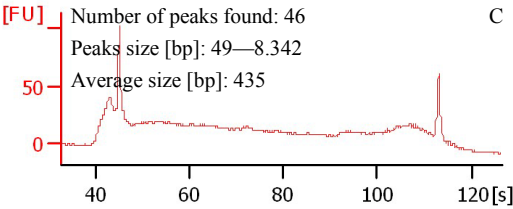
CTAB-ethanol/NaCl^a



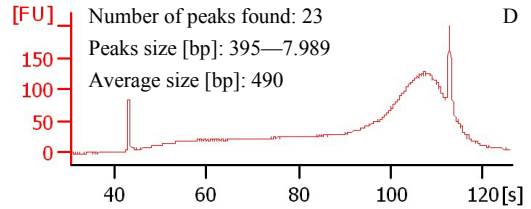
CTAB-ethanol/NaCl^b



CTAB-isopropanol

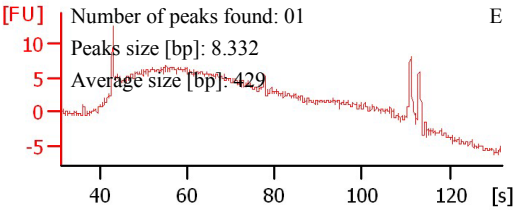


Qiagen kit

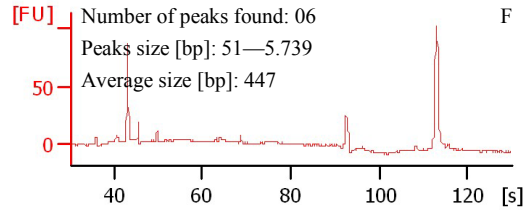


Breutelia integrifolia 3597/06

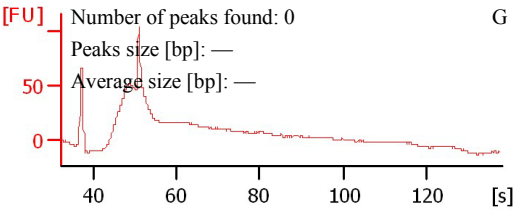
CTAB-ethanol/NaCl^a



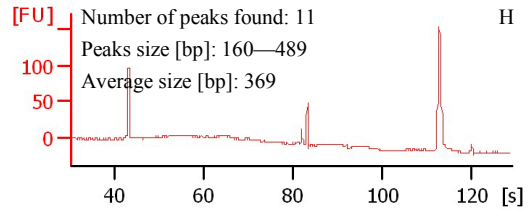
CTAB-ethanol/NaCl^b



CTAB-isopropanol

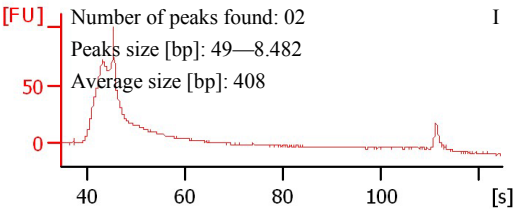


Qiagen kit

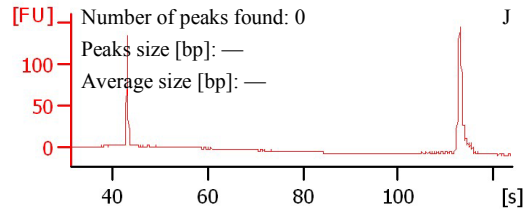


Bucklandiella stratipila 3758/06

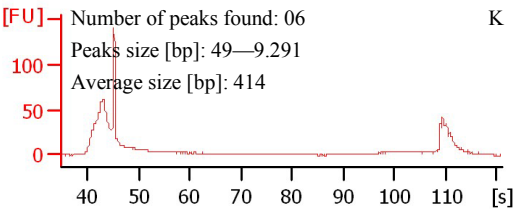
CTAB-ethanol/NaCl^a



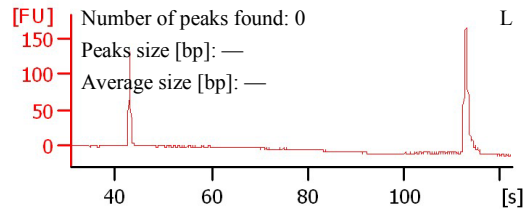
CTAB-ethanol/NaCl^b



CTAB-isopropanol

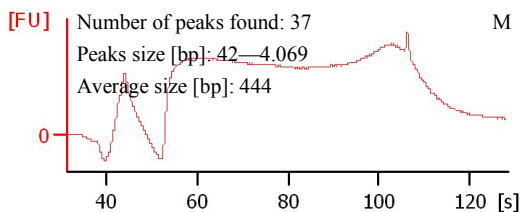


Qiagen kit

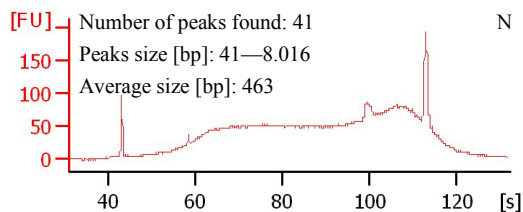


Cratoneurospis chilensis 403/99

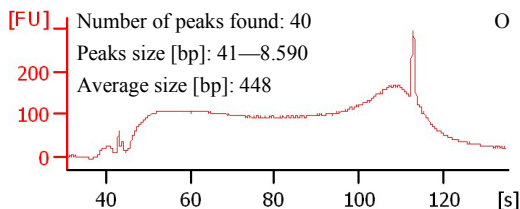
CTAB-ethanol/NaCl^a



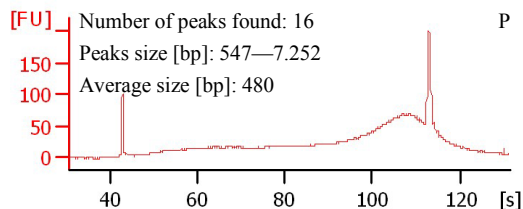
CTAB-ethanol/NaCl^b



CTAB-isopropanol

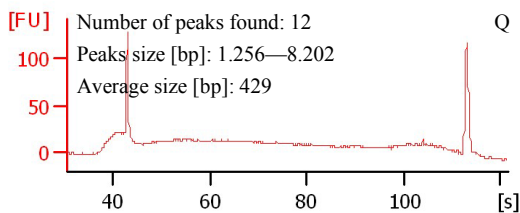


Qiagen kit

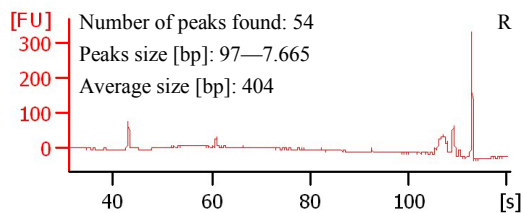


Holodontium strictum 3581/06

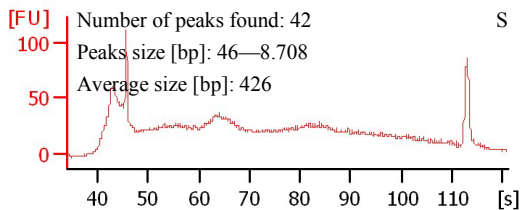
CTAB-ethanol/NaCl^a



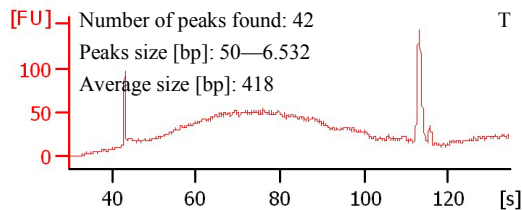
CTAB-ethanol/NaCl^b



CTAB-isopropanol

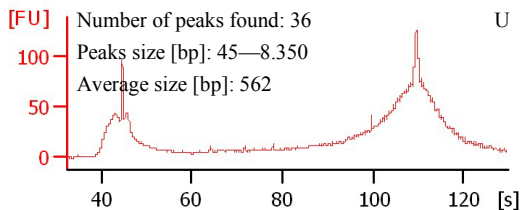


Qiagen kit

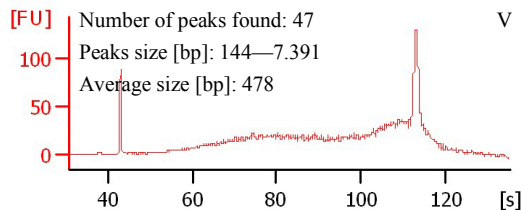


Rhacocarpus purpurascens 613/13

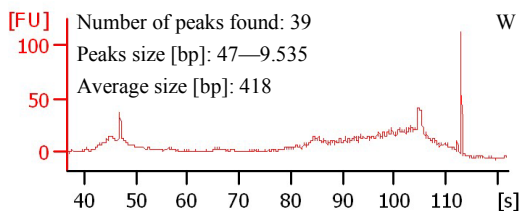
CTAB-ethanol/NaCl^a



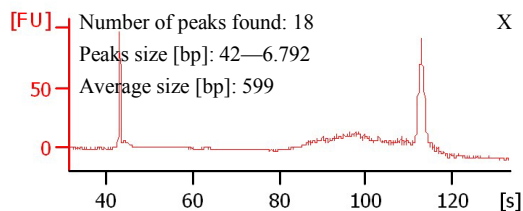
CTAB-ethanol/NaCl^b



CTAB-isopropanol

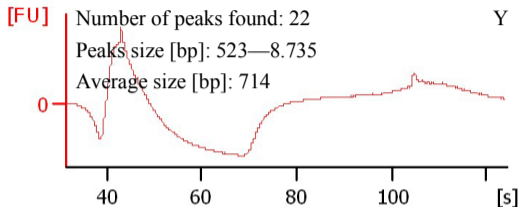


Qiagen kit

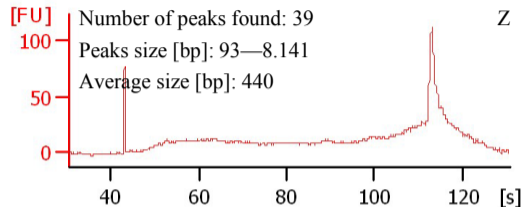


Valdonia microcarpa 555/99

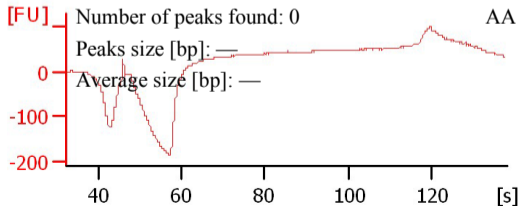
CTAB-ethanol/NaCl^a



CTAB-ethanol/NaCl^b



CTAB-isopropanol



Qiagen kit

