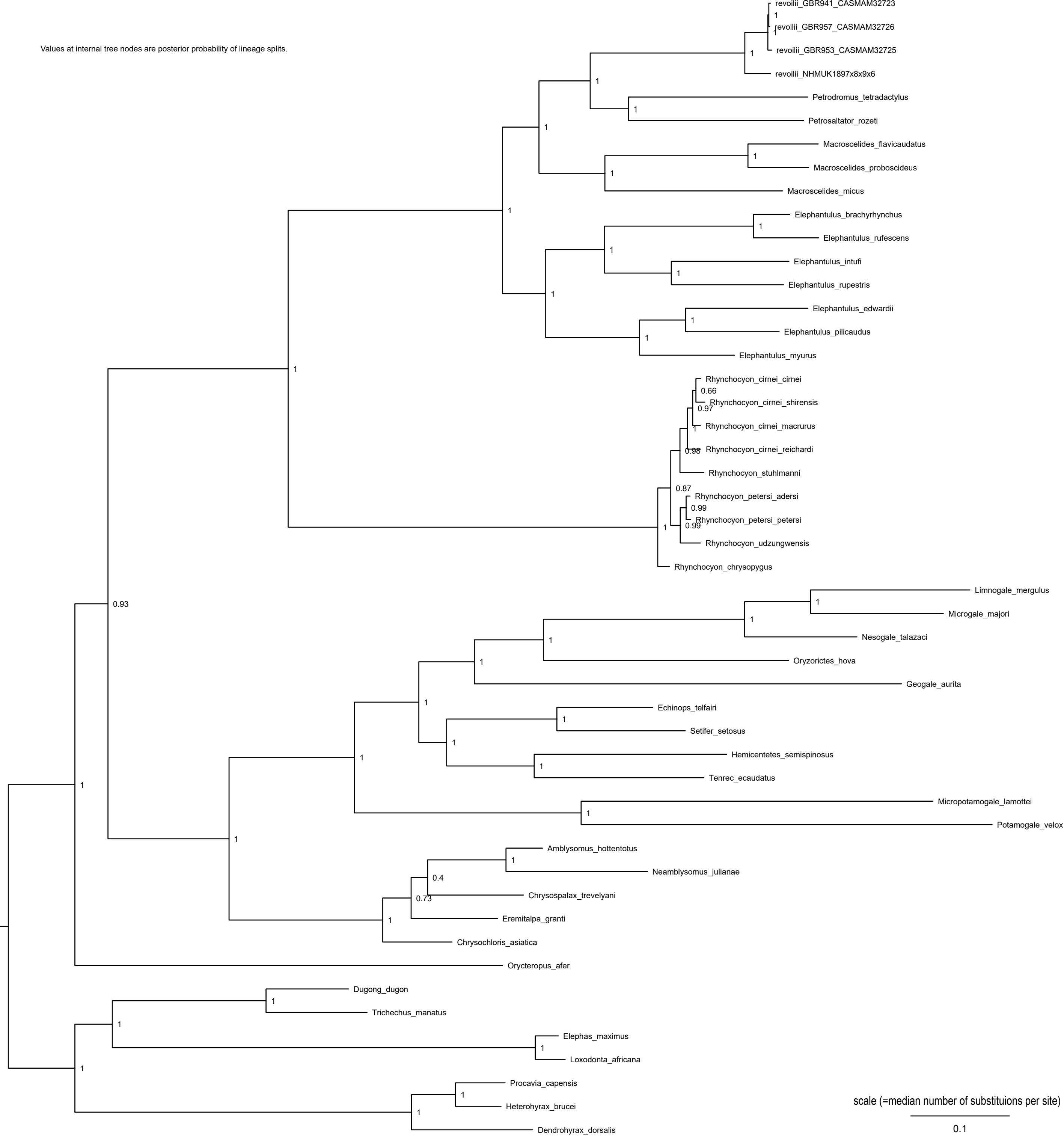


Values at internal tree nodes are posterior probability of lineage splits.



Genetic distance matrix reporting percent identity of macroscelidean DNA sequences using the six-locus supermatrix alignment.

	revoliil_GBR941_CASMAM32723	revoliil_GBR953_CASMAM32725	revoliil_GBR957_CASMAM32726	revoliil_NHMUK1897x8x9x6	Petrodromus_tetradactylus	Petrosaltator_rozeti	Macroscelides_micus	Macroscelides_flavicaudatus	Macroscelides_proboscideus	Elephantulus_brachyrhynchus	Elephantulus_edwardii	Elephantulus_intufi	Elephantulus_myurus	Elephantulus_pilicaudus	Elephantulus_rufescens	Elephantulus_rupestris	Rhynchocyon_chrysopygus	Rhynchocyon_cirnei_cirnei	Rhynchocyon_cirnei_macrurus	Rhynchocyon_cirnei_reichardi	Rhynchocyon_cirnei_shirensis	Rhynchocyon_petersi_adersi	Rhynchocyon_petersi_petersi	Rhynchocyon_stuhlmanni	Rhynchocyon_udzungwensis
revoliil_GBR941_CASMAM32723	100.00																								
revoliil_GBR953_CASMAM32725	99.41	100.00																							
revoliil_GBR957_CASMAM32726	99.77	99.49	100.00																						
revoliil_NHMUK1897x8x9x6	88.66	88.77	88.72	100.00																					
Petrodromus_tetradactylus	65.05	64.95	65.09	83.26	100.00																				
Petrosaltator_rozeti	64.85	64.74	64.88	83.64	86.78	100.00																			
Macroscelides_micus	65.23	65.09	65.23	81.82	84.36	88.10	100.00																		
Macroscelides_flavicaudatus	64.66	64.63	64.70	81.75	85.01	88.38	89.97	100.00																	
Macroscelides_proboscideus	83.56	83.46	83.57	81.92	64.59	67.23	69.15	72.31	100.00																
Elephantulus_brachyrhynchus	52.67	52.60	52.71	88.98	76.65	72.24	71.32	71.60	51.24	100.00															
Elephantulus_edwardii	55.47	55.40	55.41	80.48	64.23	64.68	65.68	64.90	50.62	55.69	100.00														
Elephantulus_intufi	60.72	60.61	60.75	84.12	84.97	80.83	80.17	80.52	61.03	82.03	63.02	100.00													
Elephantulus_myurus	53.68	53.55	53.71	81.71	72.07	72.27	73.53	72.95	56.25	58.21	54.34	69.25	100.00												
Elephantulus_pilicaudus	47.99	47.97	47.97	88.15	73.10	67.43	66.13	66.57	44.96	84.47	75.09	77.25	50.75	100.00											
Elephantulus_rufescens	66.10	66.04	66.10	82.28	80.14	82.50	83.58	83.29	64.36	77.77	68.75	79.23	71.20	67.77	100.00										
Elephantulus_rupestris	62.22	62.09	62.24	82.97	85.12	81.57	80.71	80.84	61.82	76.89	63.78	85.20	70.73	75.34	79.05	100.00									
Rhynchocyon_chrysopygus	30.11	30.01	30.17	53.02	42.27	42.48	43.15	42.68	30.98	44.59	22.52	43.71	56.53	34.02	41.86	42.47	100.00								
Rhynchocyon_cirnei_cirnei	50.56	50.47	50.64	78.09	67.66	67.85	68.65	68.19	52.34	54.02	49.26	64.05	84.15	46.43	65.27	65.53	65.84	100.00							
Rhynchocyon_cirnei_macrurus	51.27	51.16	51.34	78.14	64.92	64.93	66.29	65.40	50.98	53.34	50.26	61.47	82.23	46.50	66.78	62.77	64.54	94.73	100.00						
Rhynchocyon_cirnei_reichardi	50.32	50.23	50.40	77.81	67.76	67.81	68.75	68.11	52.27	54.15	49.18	64.00	84.22	46.47	65.30	65.57	65.68	99.39	94.45	100.00					
Rhynchocyon_cirnei_shirensis	62.14	62.00	62.14	64.02	58.64	59.61	61.93	60.21	60.97	64.26	60.87	61.26	66.21	64.86	61.89	60.31	92.70	72.78	72.71	72.23	100.00				
Rhynchocyon_petersi_adersi	65.79	65.66	65.79	67.72	62.46	63.50	65.72	64.34	65.24	68.47	64.60	65.12	66.21	68.77	65.82	63.84	97.98	75.88	75.81	75.53	93.46	100.00			
Rhynchocyon_petersi_petersi	57.56	57.44	57.63	78.14	59.61	59.77	60.51	60.15	59.91	46.46	44.30	57.11	72.35	38.44	58.37	57.69	53.96	85.21	81.47	84.95	71.81	76.71	100.00		
Rhynchocyon_stuhlmanni	50.13	50.06	50.22	78.69	66.87	67.06	68.19	67.30	51.91	54.75	49.07	64.45	83.55	47.03	64.92	64.85	66.68	97.59	93.34	97.54	72.51	75.85	83.62	100.00	
Rhynchocyon_udzungwensis	61.34	61.24	61.39	77.70	78.58	82.44	82.93	82.71	63.23	68.30	62.57	75.02	68.47	64.39	79.18	75.45	50.21	80.48	77.17	80.32	71.26	75.60	71.32	79.13	100.00