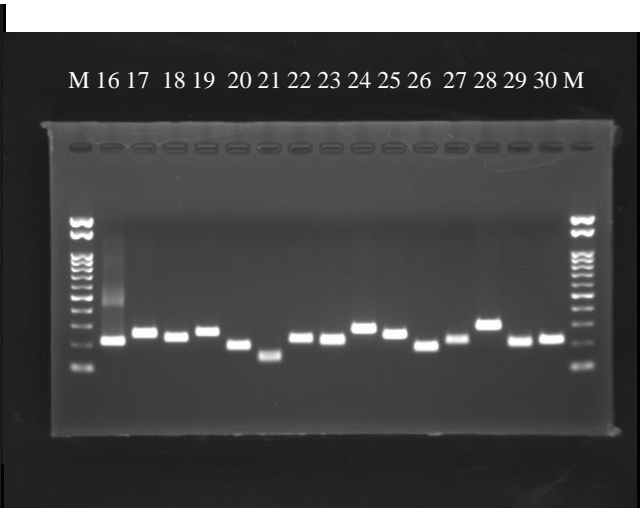
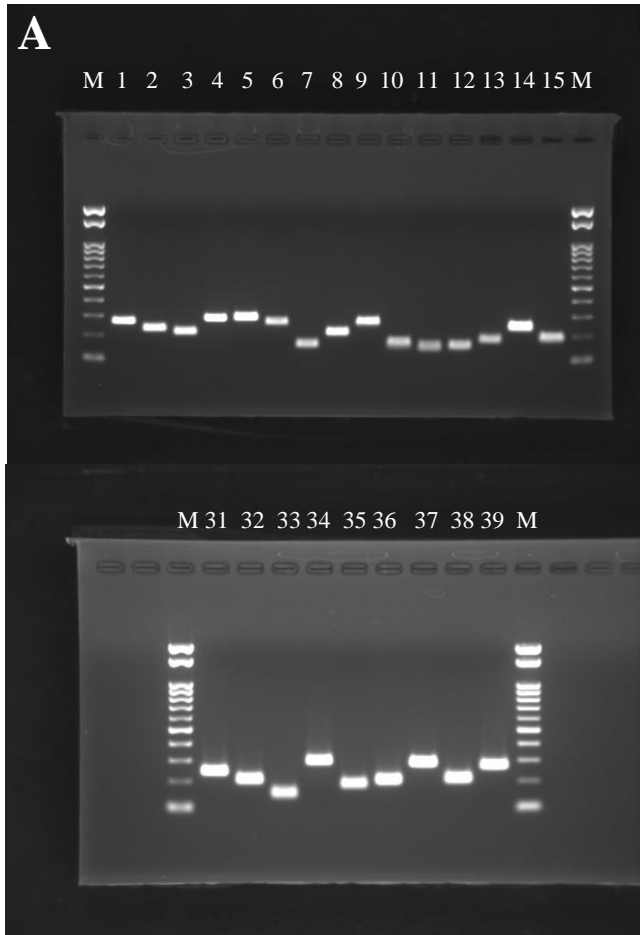


Supplemental Figure S1. The results of electrophoresis of amplicons.

Amplicons using PCR primers designed in this study (Table S1) were confirmed to be single bands by electrophoresis. **A**, The photographs of Psa6 amplicons. **B**, The photograph of Psa1 amplicons. **C**, The photograph of Psa3 amplicons. **D**, The photograph of Psg amplicons.



Lane

M: 100bp ladder marker

1: 50S ribosomal protein L13

2: bifunctional glutamine synthetase

adenyltransferase/deadenyltransferase

3: transcriptional regulator *fraA*

4: microcin ABC transporter

ATP-binding protein

5: tRNA dihydrouridine(20/20a) synthase

dusA

6: *cfl*

7: *cfa1*

8: *cfa5*

9: *cfa9*

10: *cmaU*

11: *cmaD*

12: *corR*

13: *corS*

14: *corP*

15: *argK*

16: *argD*

17: *avrRps4*

18: *hopJ*

19: *hrpK*

20: *avrRpm1*

21: *hrpL*

22: *avrE1*

23: *hopM1*

24: *hopAA1-1*

25: *hopN1*

26: *hopS2*

27: *avrD1*

28: *hopD1*

29: *hopQ1*

30: *hopY1*

31: *hopZ3*

32: *hopAS1*

33: *hopAE1*

34: *hopR1*

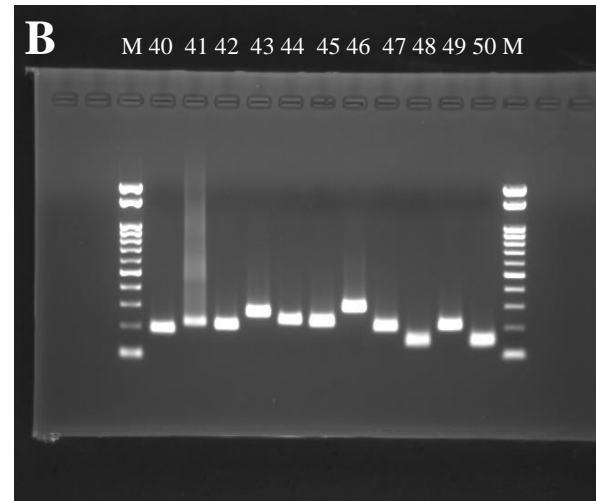
35: *hopAH1*

36: *hopA11*

37: *avrpto5*

38: *hopAZ1*

39: *hopAU1*



Lane

M: 100bp ladder marker

40: *argK*

41: *argD*

42: *hopAS1*

43: *hrpK*

44: *avrE*

45: *hopM1*

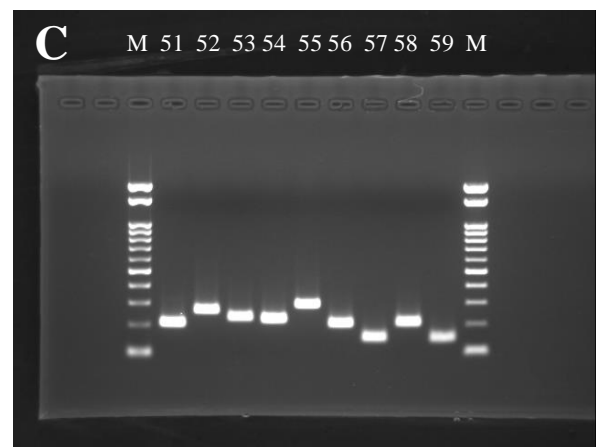
46: *hopD1*

47: *hopQ1*

48: *hopAE1*

49: *hopAZ1*

50: *hrpL*



Lane

M: 100bp ladder marker

51: *hopAS1*

52: *hrpK*

53: *avrE*

54: *hopM1*

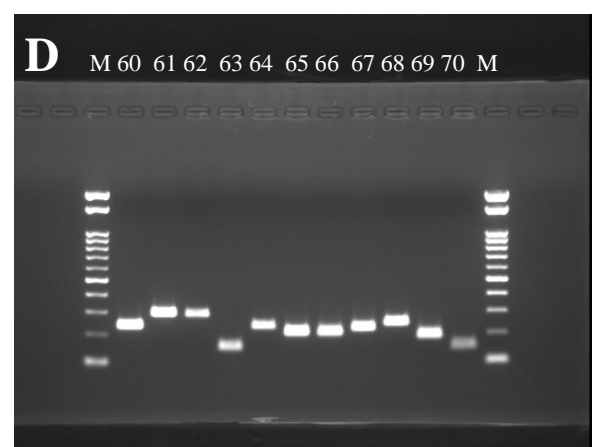
55: *hopD1*

56: *hopQ1*

57: *hopAE1*

58: *hopAZ1*

59: *hrpL*



Lane

M: 100bp ladder marker

60: bifunctional glutamine synthetase

adenyltransferase/deadenyltransferase

61: tRNA dihydrouridine(20/20a) synthase *dusA*

62: microcin ABC transporter ATP-binding protein

63: *hrpL*

64: *avrE1*

65: *hopAS1*

66: *hopQ1*

67: *hopM1*

68: *hrpK*

69: *hopAZ1*

70: *hopAE1*