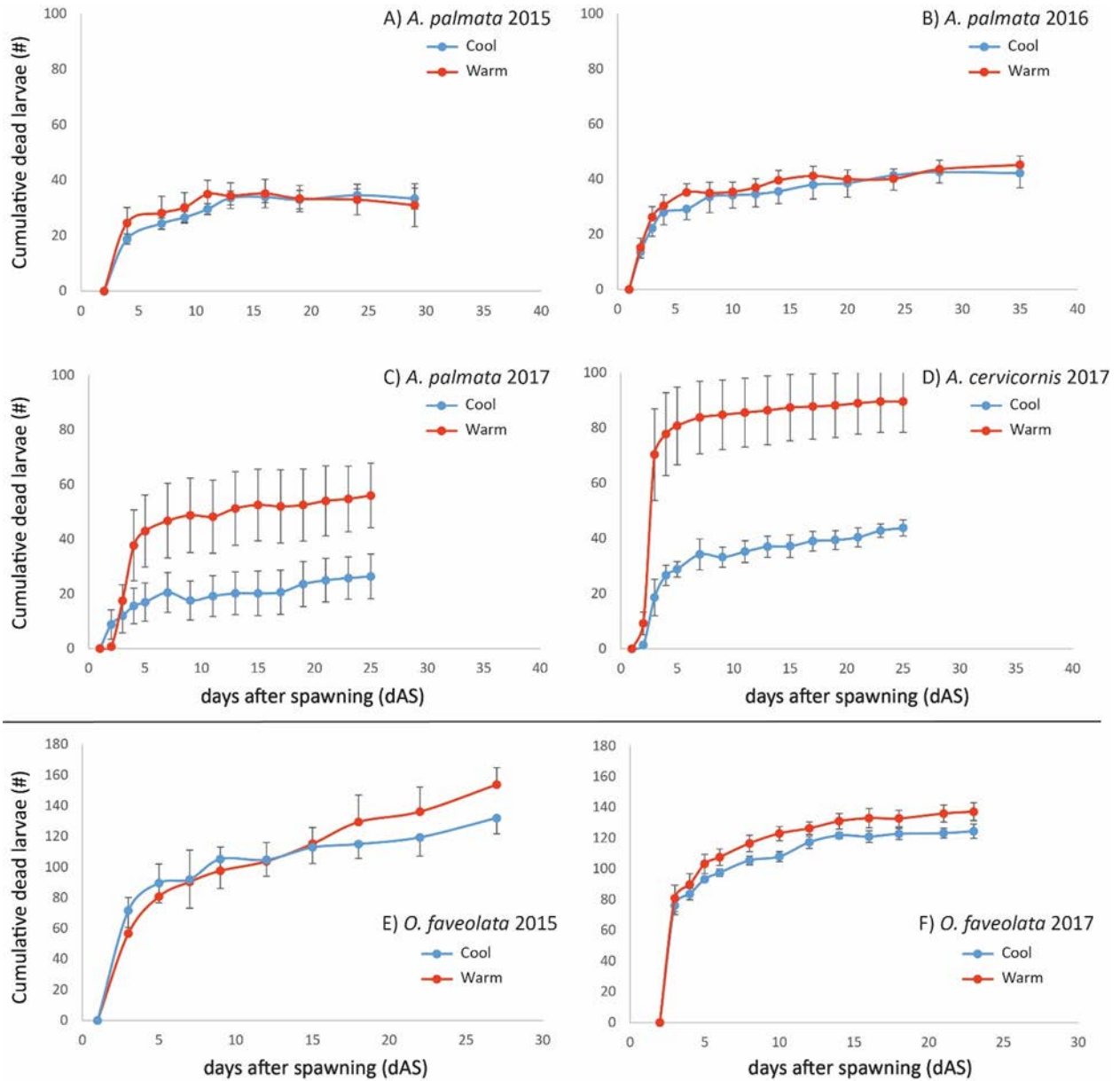
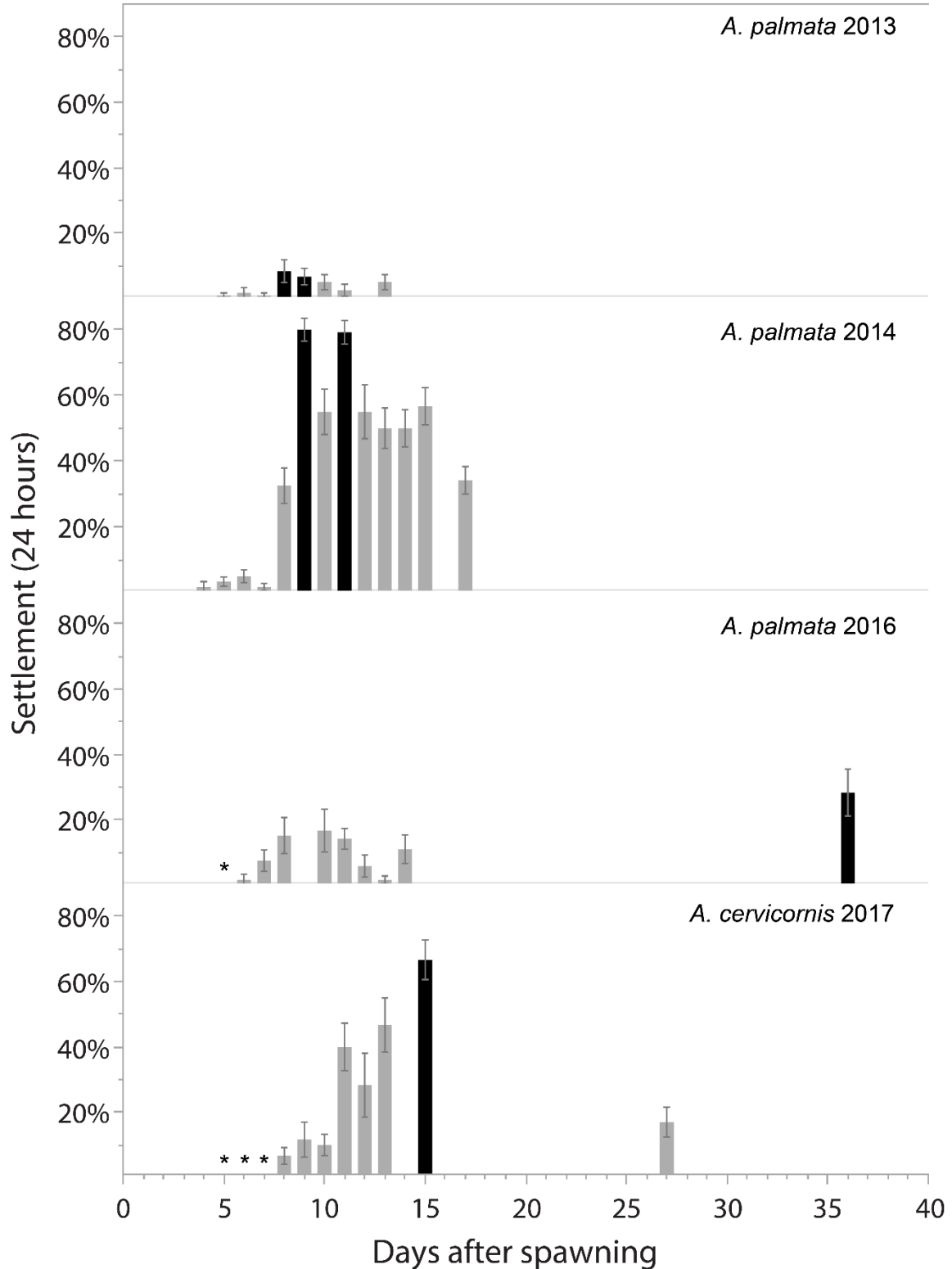


Suppl. Fig 1: Mean cumulative mortality for each longevity assay (up to the time when larvae were transitioned from the field lab to Miami; ~ 25-35d). These data were derived for each date by the total number of missing larvae minus the cumulative number observed to have settled/metamorphosed in each dish. Error bars show 1 SE. n=5. Ap=*Acropora palmata*, Ac=*A. cervicornis*, Ofav=*Orbicella faveolata*



Suppl Fig. 2: Percentage of *Acropora* spp. larvae settled in 24 hour competency assays. Error bars show standard error. Black bars denote high settlement days within each year, i.e. settlement values within 25% of the maximum settlement value. Asterisks denote counts of 0. Settlement was not quantified on days without bars.



Suppl. Fig 3. Percentage of *Orbicella faveolata* larvae settled in 24 hour competency assays. Error bars show standard error. Black bars denote high settlement days within each year, i.e. settlement values within 25% of the maximum settlement value. Asterisks denote counts of 0. Settlement was not quantified on days without bars.

