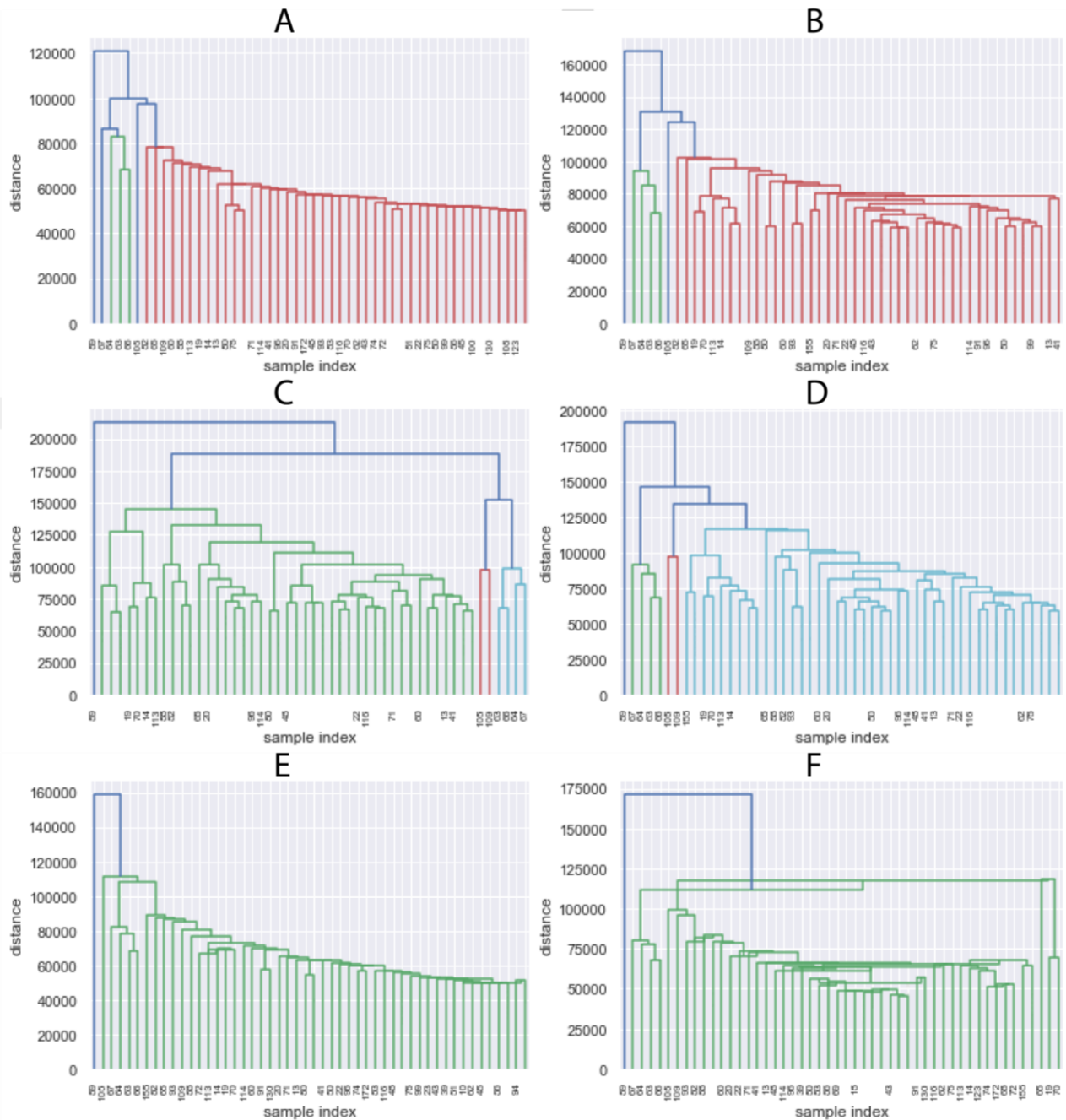


## Supplementary Material 2



Hierarchical maps (dendrograms) using as criterion for choosing the pair of clusters to merge at each step A) Single, B) Average, C) Complete, D) Weighted, E) Centroid, and F) Median methods. These hierarchical maps were generated by data without transformation and deleting their labels. Clustering approaches demonstrate whether the data contain relevant patterns for grouping.