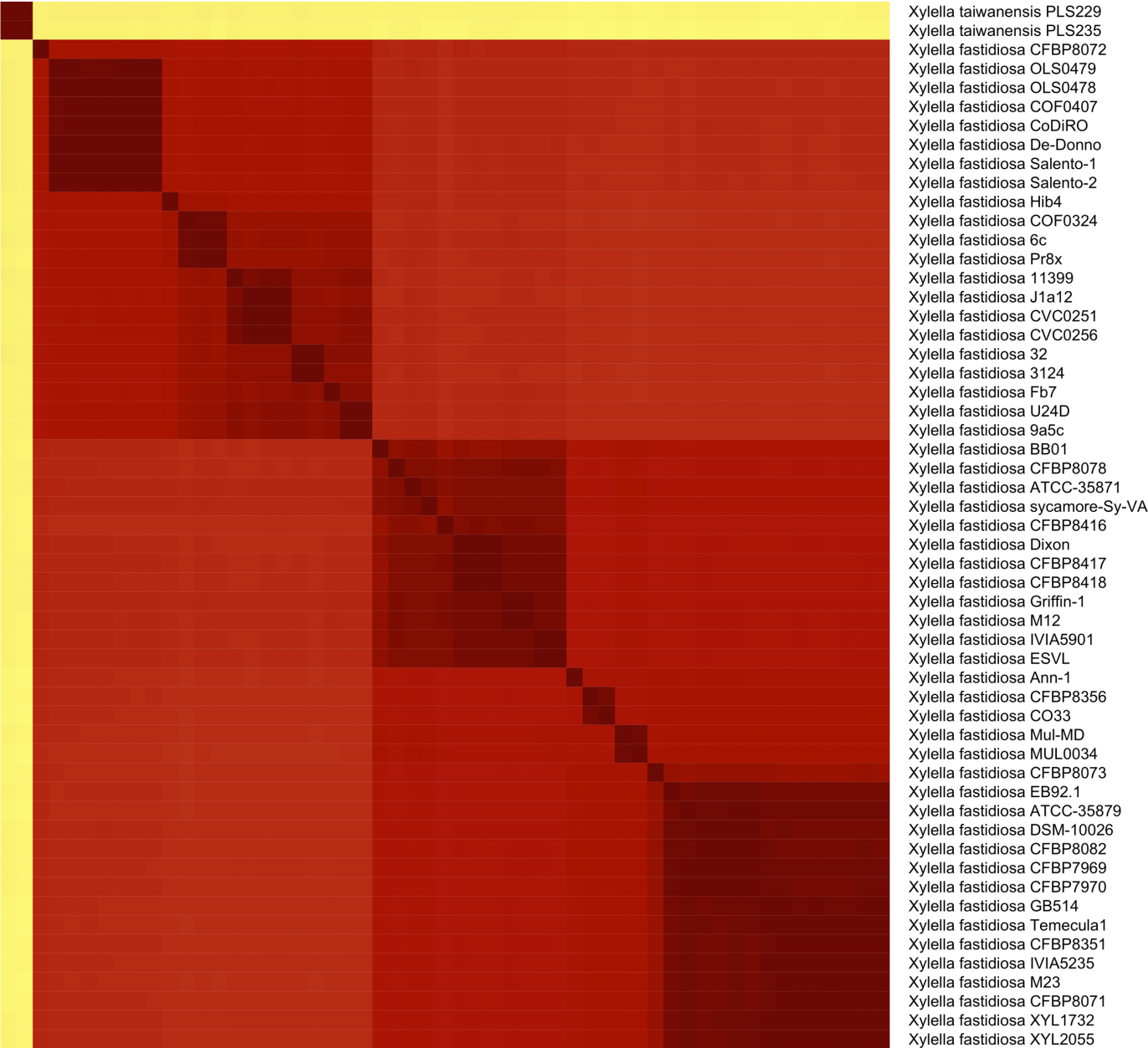
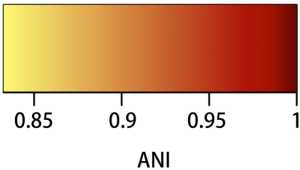
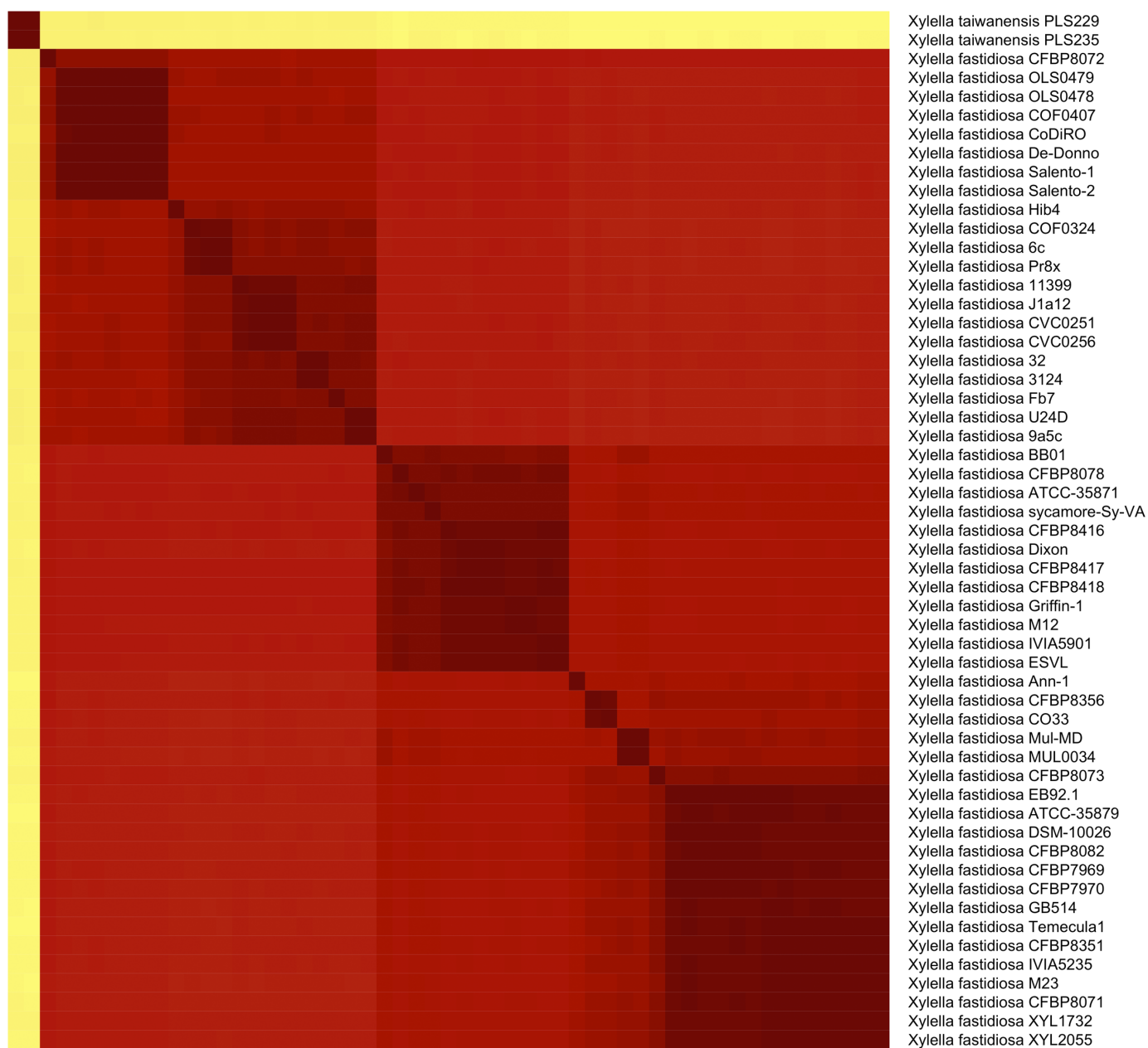
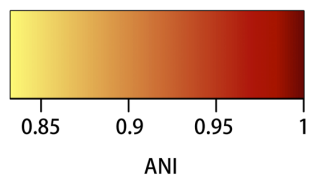


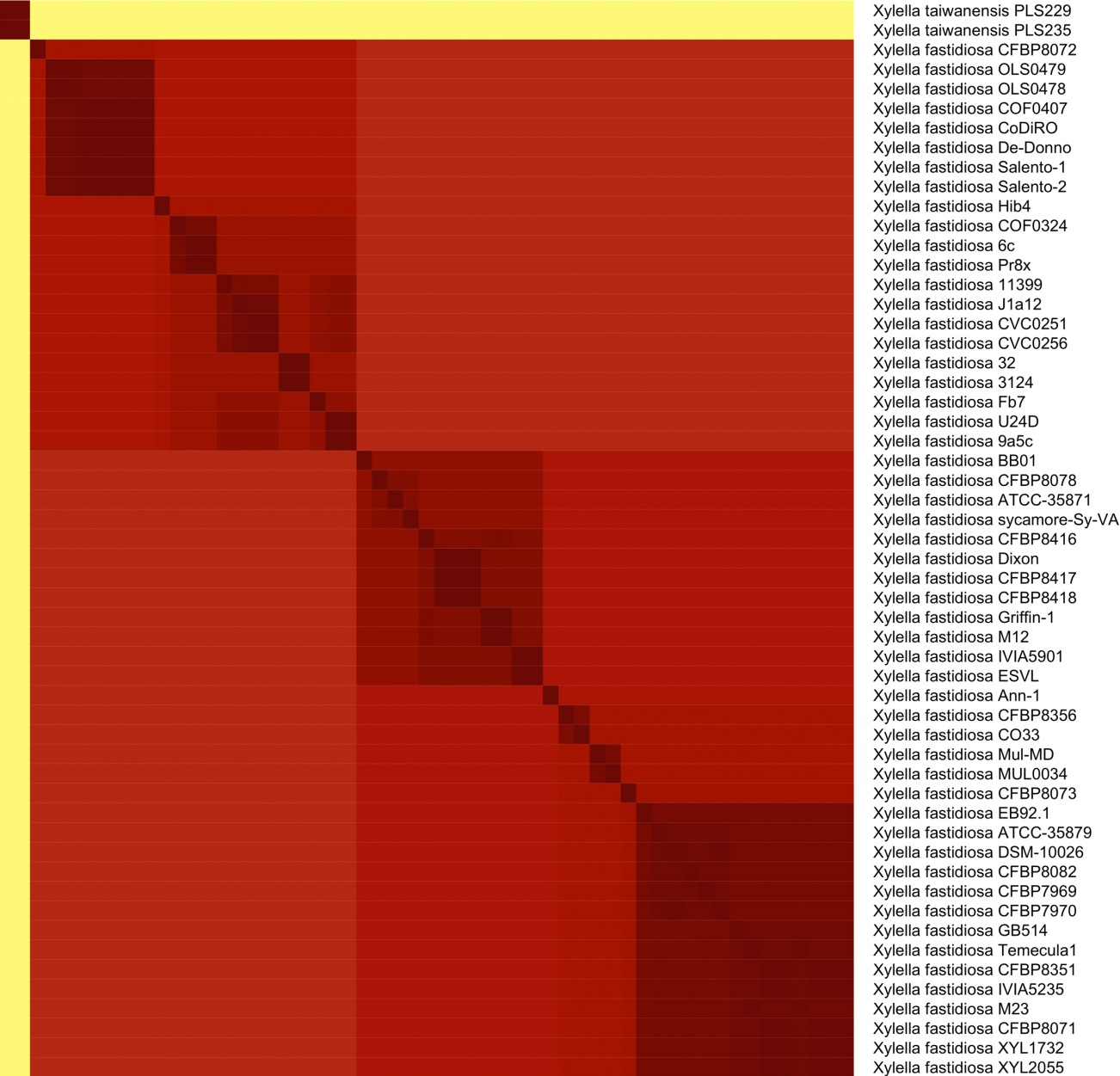
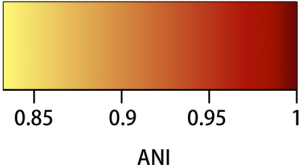
Supplementary Figure 16. Heatmap based on the ANI matrix calculated by pyani for data set D .



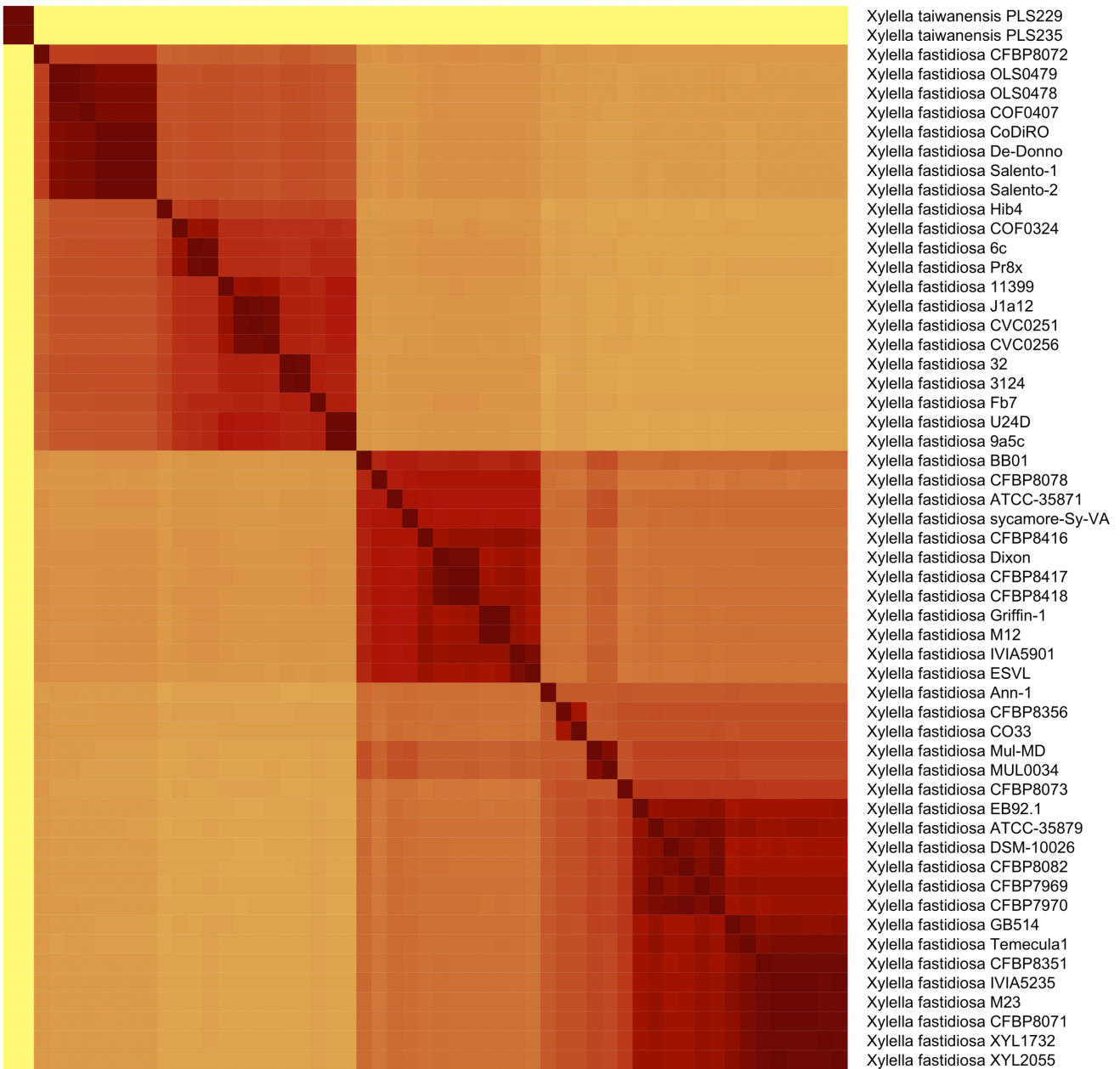
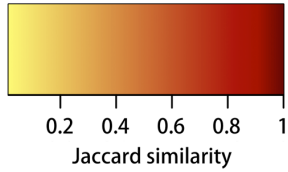
Supplementary Figure 17. Heatmap based on the ANI matrix calculated by FastANI for data set D.



Supplementary Figure 18. Heatmap based on the ANI matrix calculated by LINflow for data set D.



Supplementary Figure 19. Heatmap based on the Jaccard similarity matrix calculated by sourmash with k=21 for data set D.



Supplementary Figure 20. Heatmap based on the Jaccard similarity matrix calculated by sourmash with k=51 for data set D.

