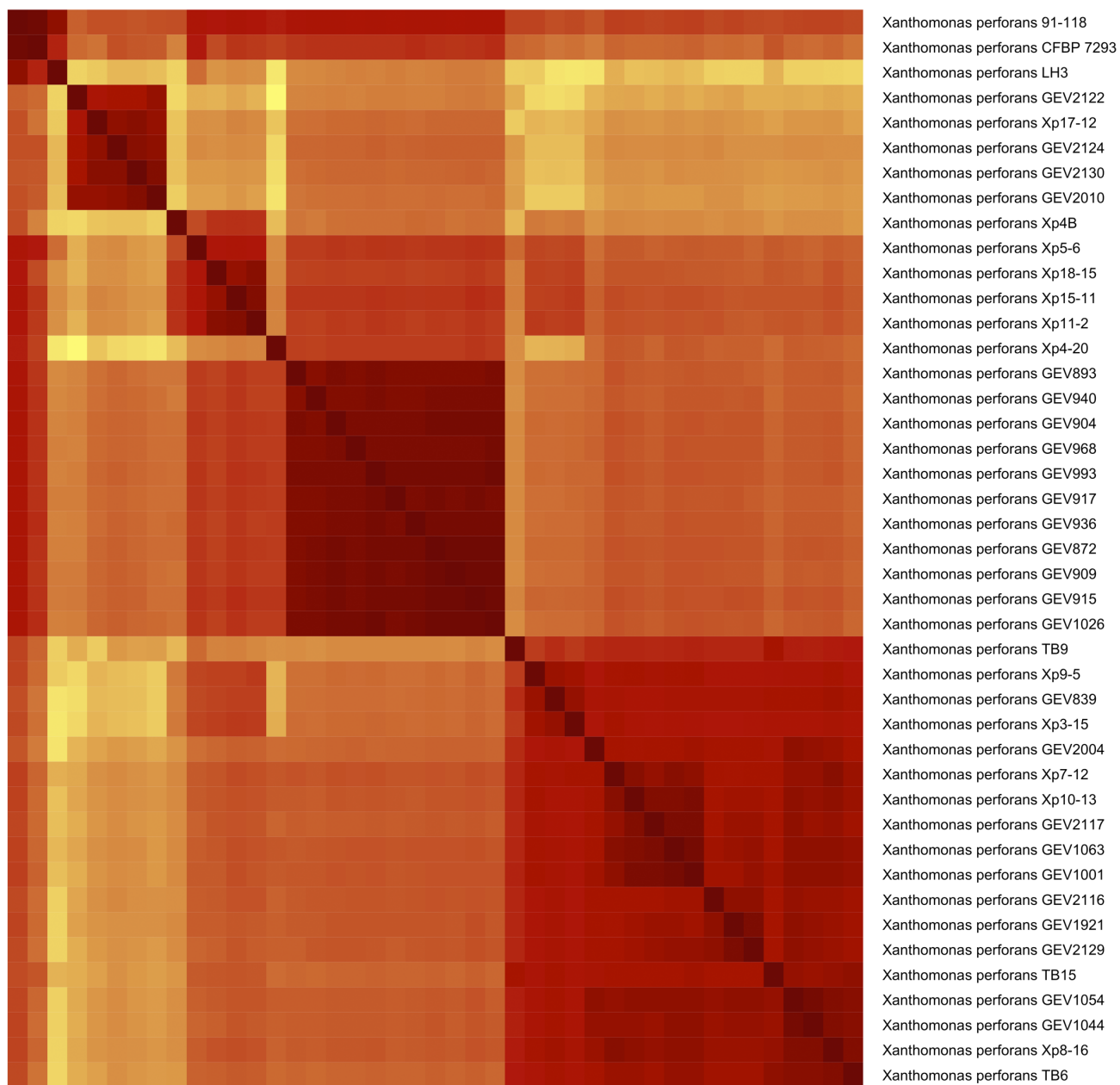
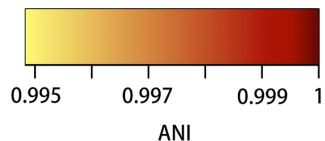
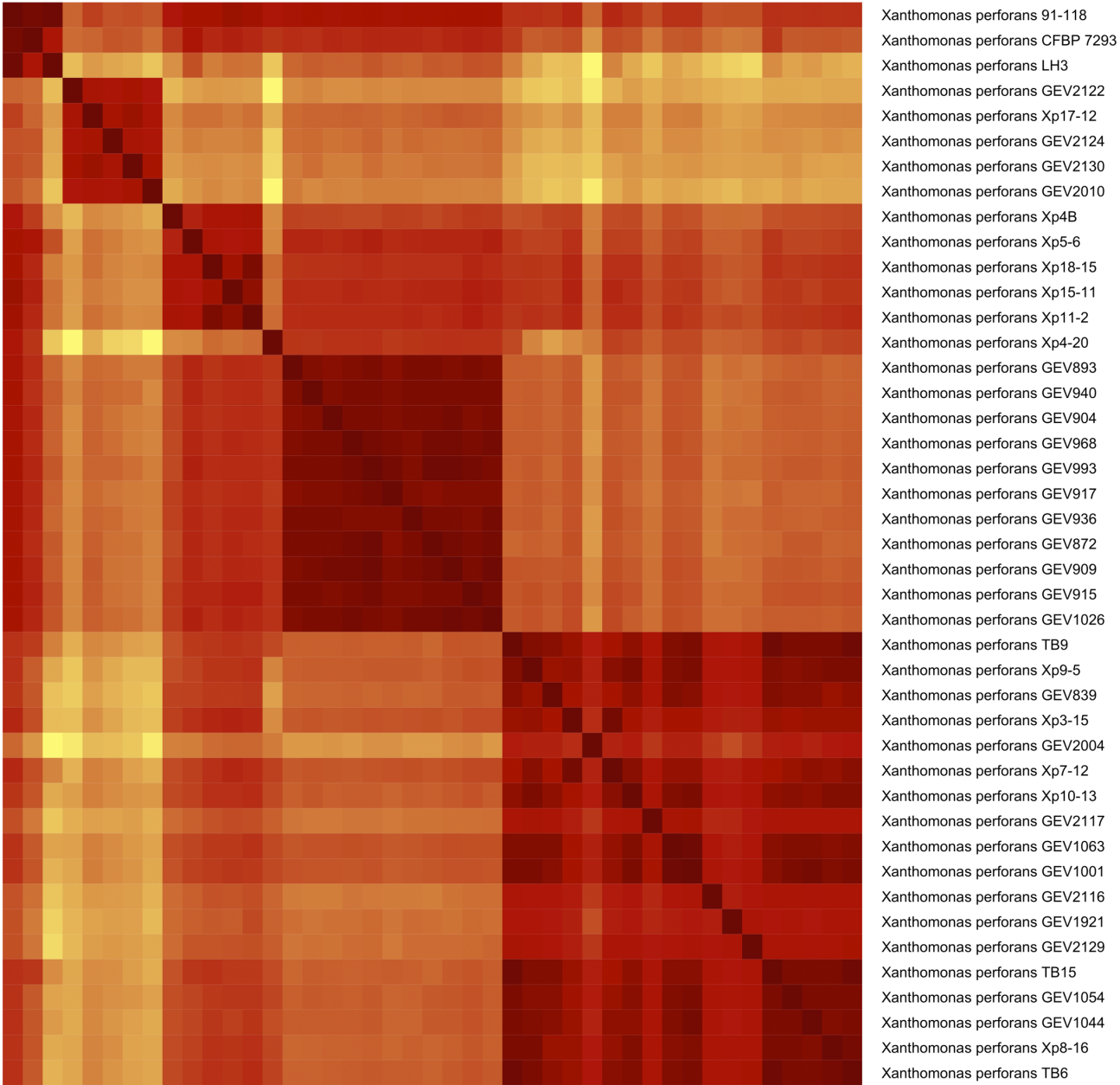
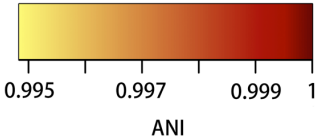


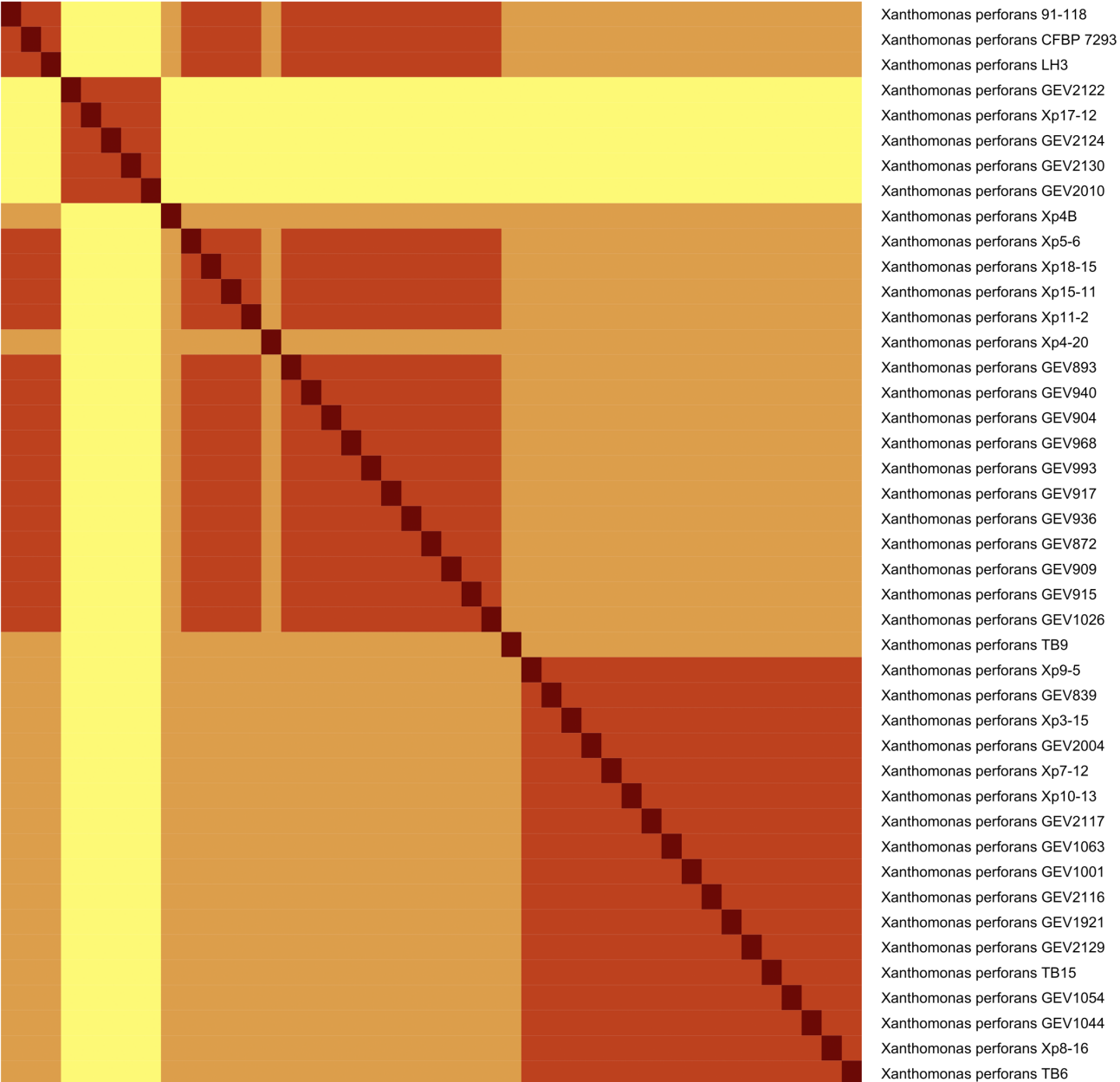
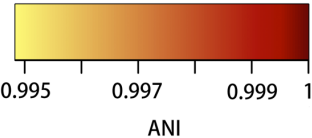
Supplementary Figure 6. Heatmap based on the ANI matrix computed by pyani for data set B.



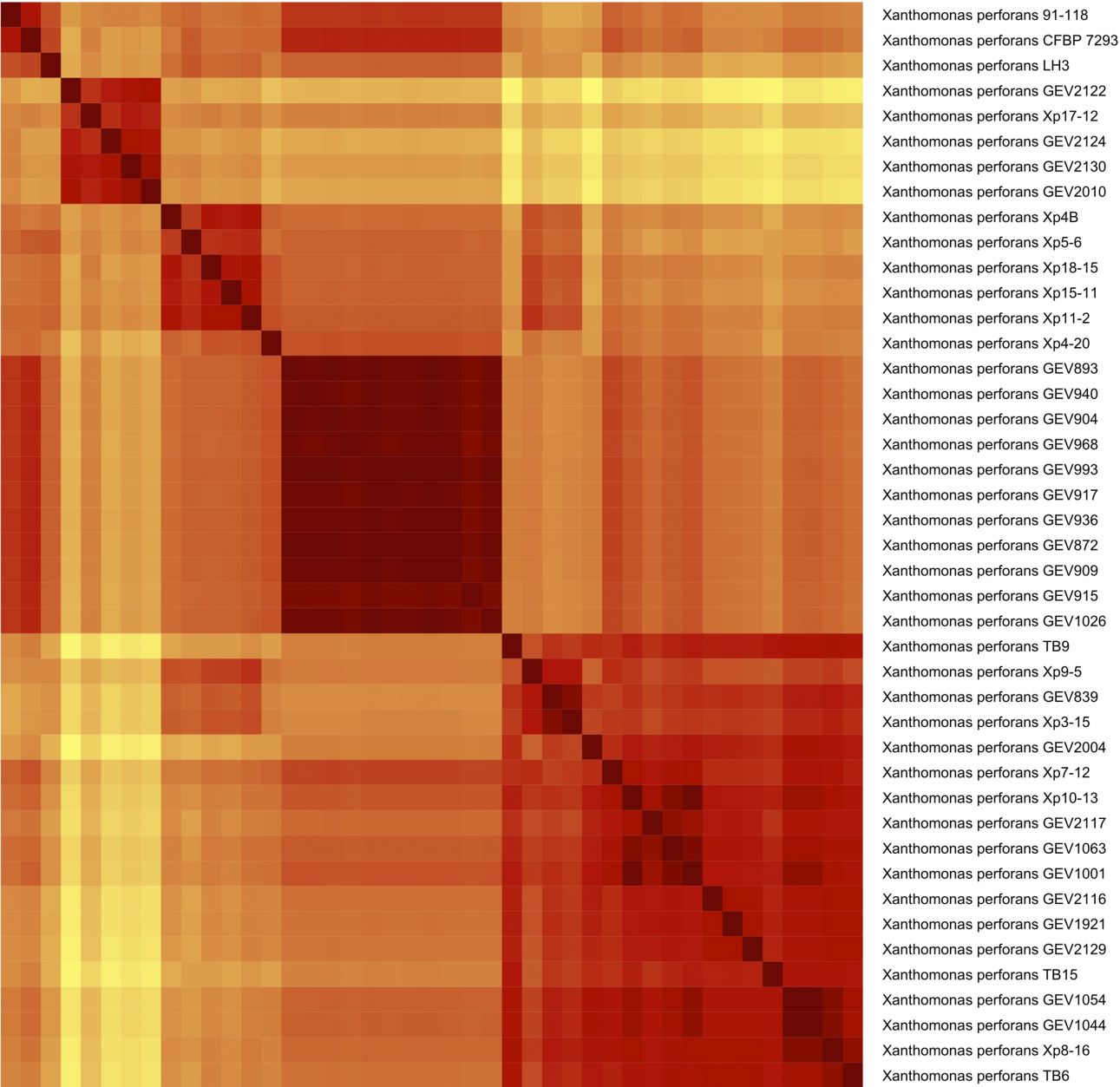
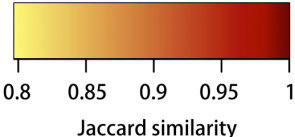
Supplementary Figure 7. Heatmap based on the ANI matrix calculated by FastANI for data set B.



Supplementary Figure 8. Heatmap based on the ANI matrix calculated by LINflow for data set B.



Supplementary Figure 9. Heatmap based on the Jaccard similarity matrix calculated by sourmash with k=21 for data set B.



Supplementary Figure 10. Heatmap based on the Jaccard similarity matrix calculated by sourmash with k=51 for data set B.

