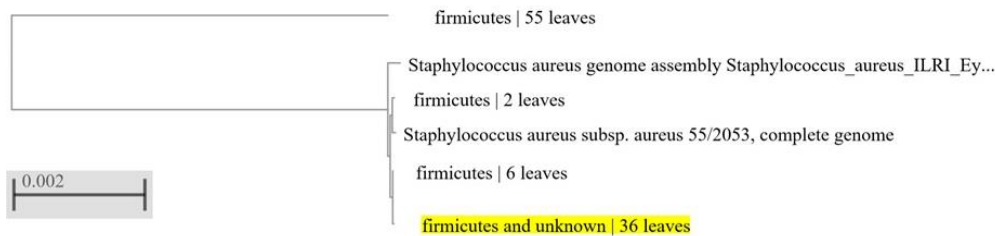
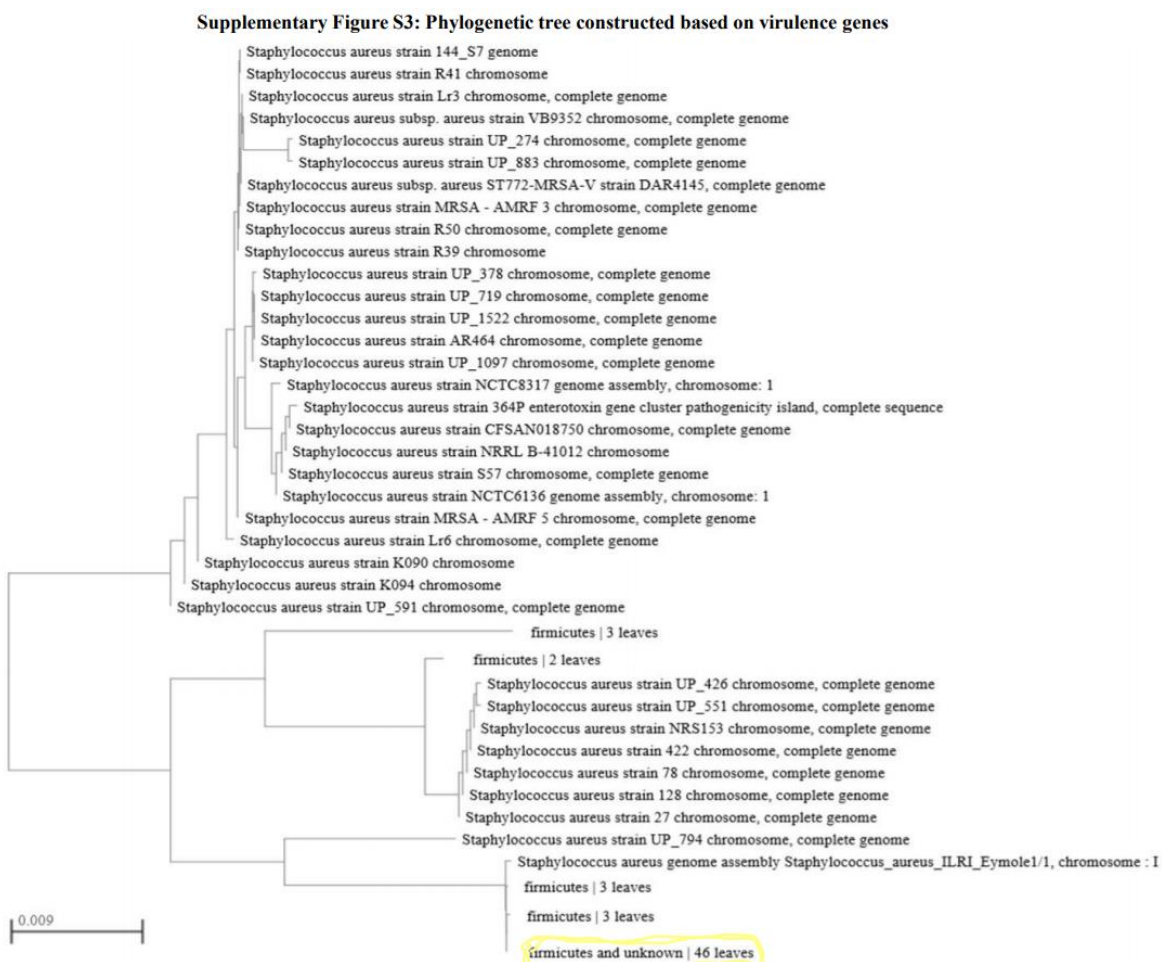


Lane 1: ATCC 25923 (MSSA)  
Lane 2: Negative Control  
Lane 3: ATCC 44330 (MRSA)  
Lane 4: Sample No.1  
Lane 5: Sample No.2  
597bp: *S.aureus* genus specific  
450bp: Fem A  
293bp: Mec A  
M: 100bp Ladder

**Supplementary Figure S1: Standardization of multiplex PCR Amplification of MRSA isolates with genus specific primers (16S rRNA, 597bp); femA (450bp) and mecA gene (293bp)**



**Supplementary Figure S2: Phylogenetic tree constructed based on antimicrobial resistant genes (ARGs)**



**Supplementary Figure S3: Phylogenetic tree constructed based on virulence genes**