

# **Fast computational mutation-response scanning of proteins**

## **Supplementary figures**

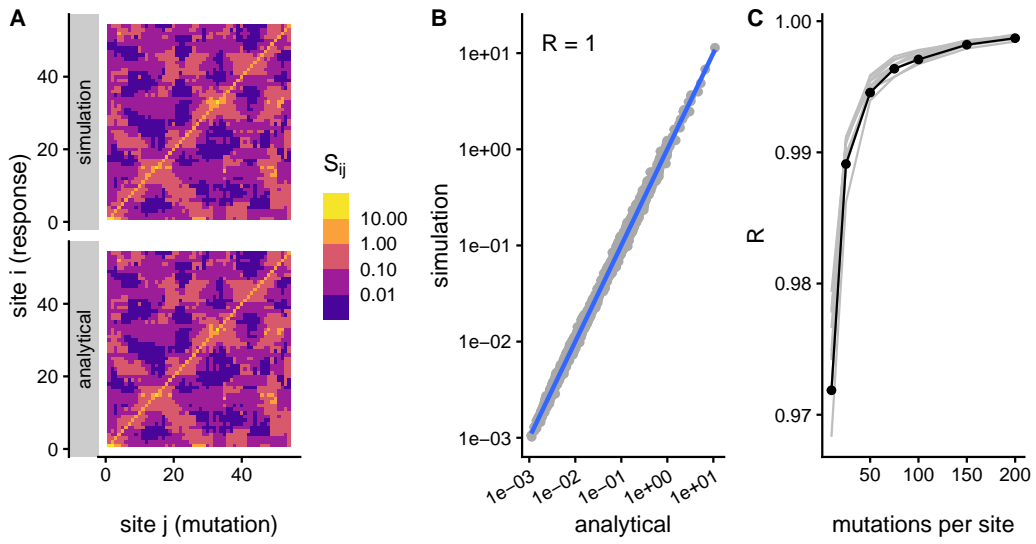
Julian Echave\*

*Instituto de Ciencias Físicas, Escuela de Ciencia y Tecnología, Universidad Nacional de  
San Martín, Martín de Irigoyen 3100, 1650 San Martín, Buenos Aires, Argentina*

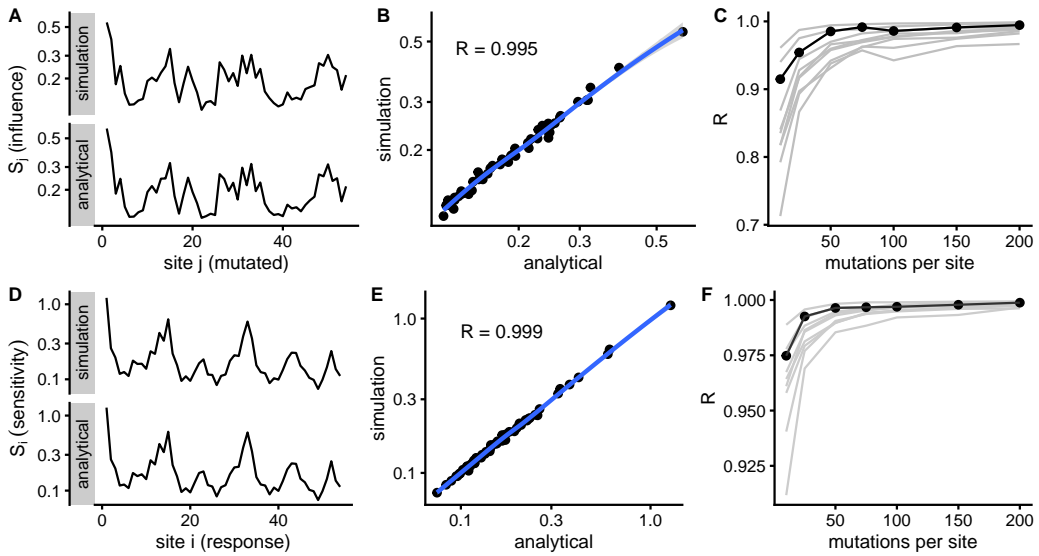
E-mail: [jechave@unsam.edu.ar](mailto:jechave@unsam.edu.ar)

The following pages contains figures similar to those of the main document for the other proteins of the dataset studied. See captions of main figures for details.

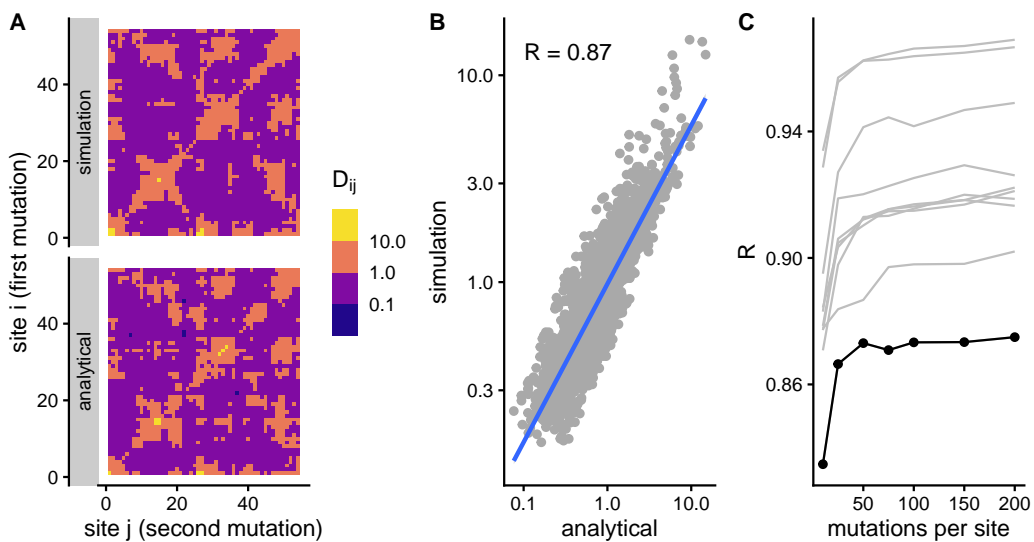
### Sensitivity matrix, d1lcka1



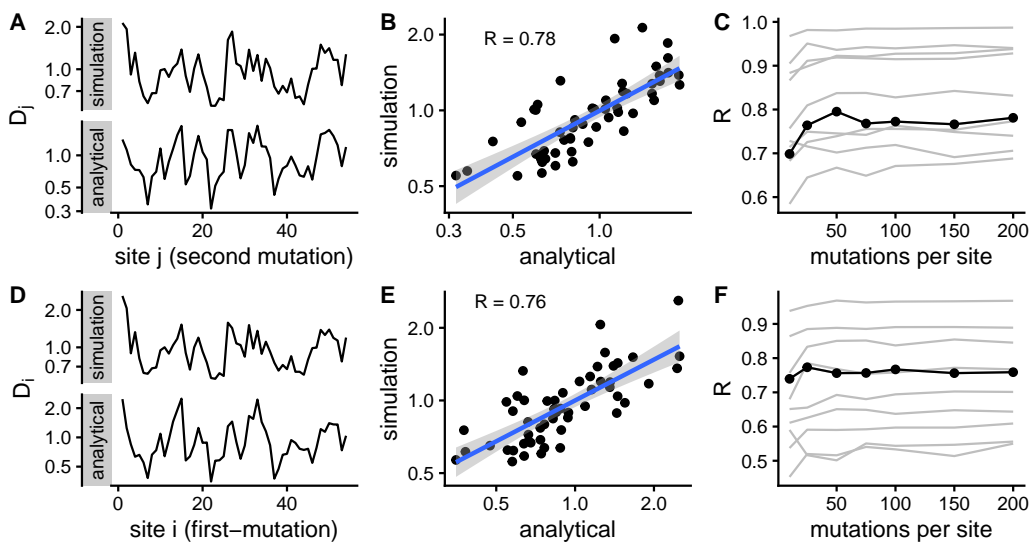
### Influence and sensitivity profiles, d1lcka1



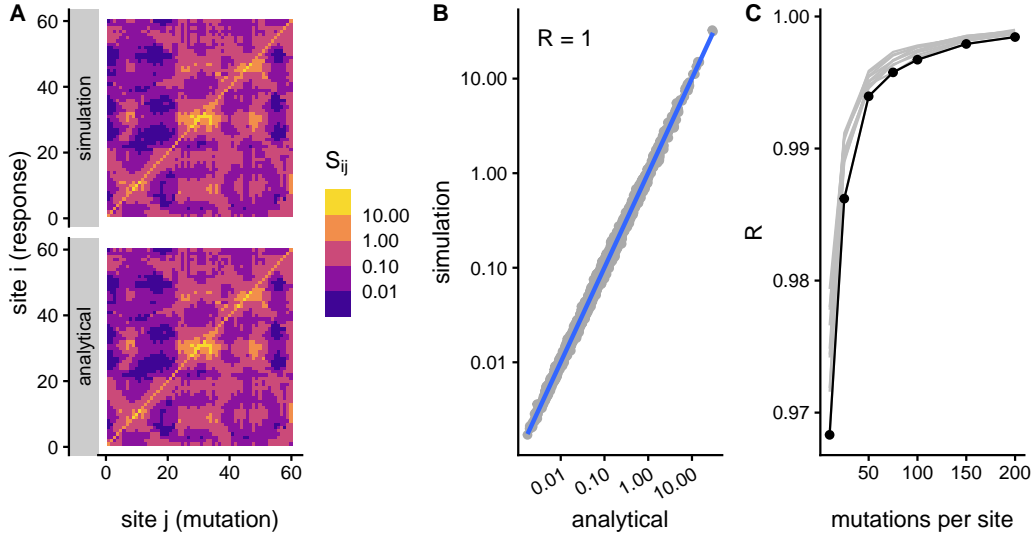
### Compensation matrix, d1lcka1



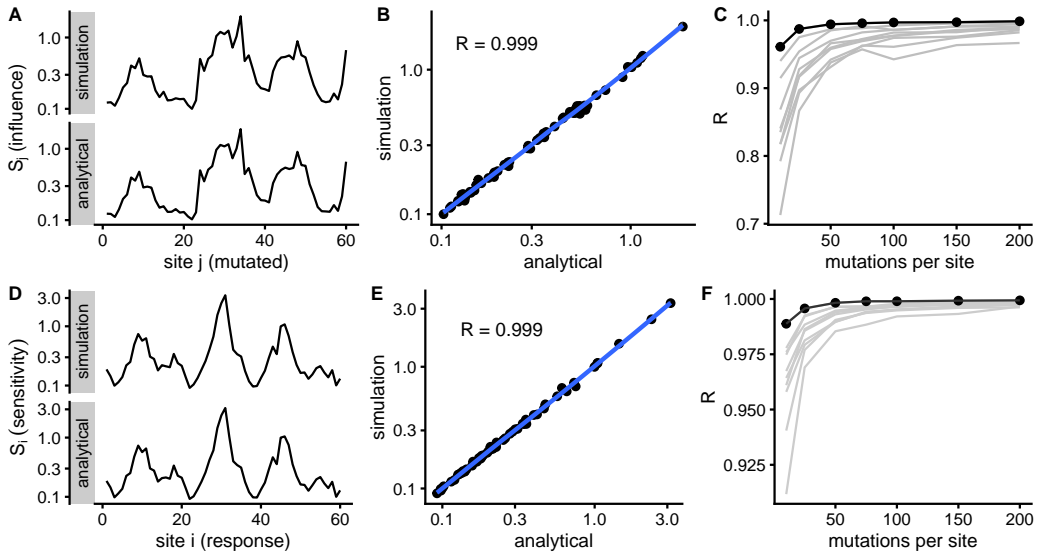
### Compensation profiles, d1lcka1



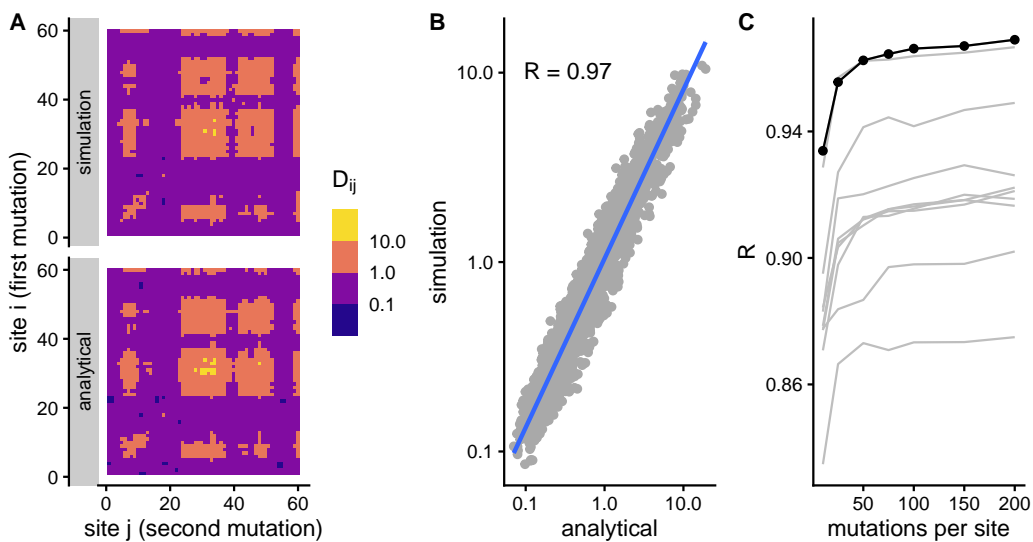
### Sensitivity matrix, d1ntxa



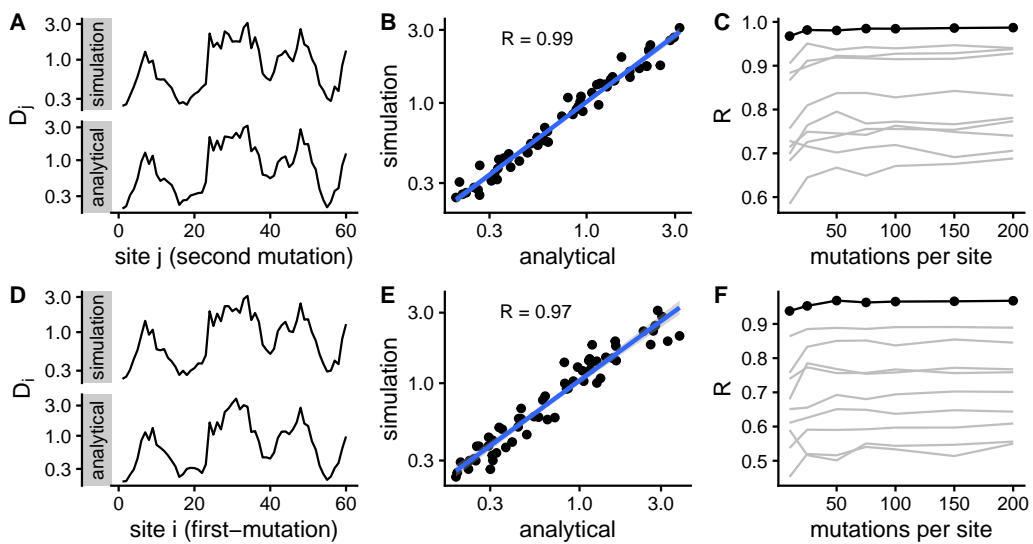
### Influence and sensitivity profiles, d1ntxa



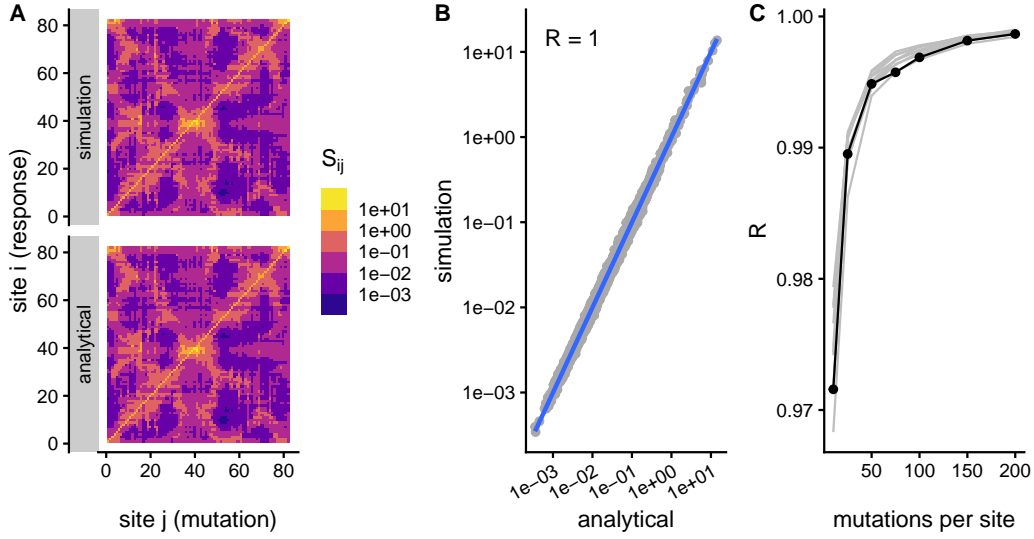
### Compensation matrix, d1ntxa



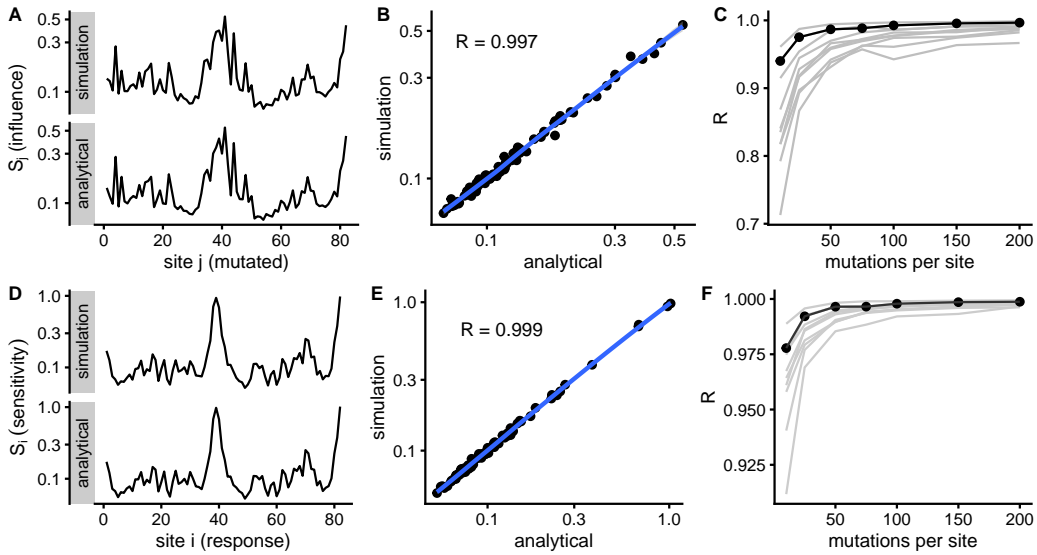
### Compensation profiles, d1ntxa



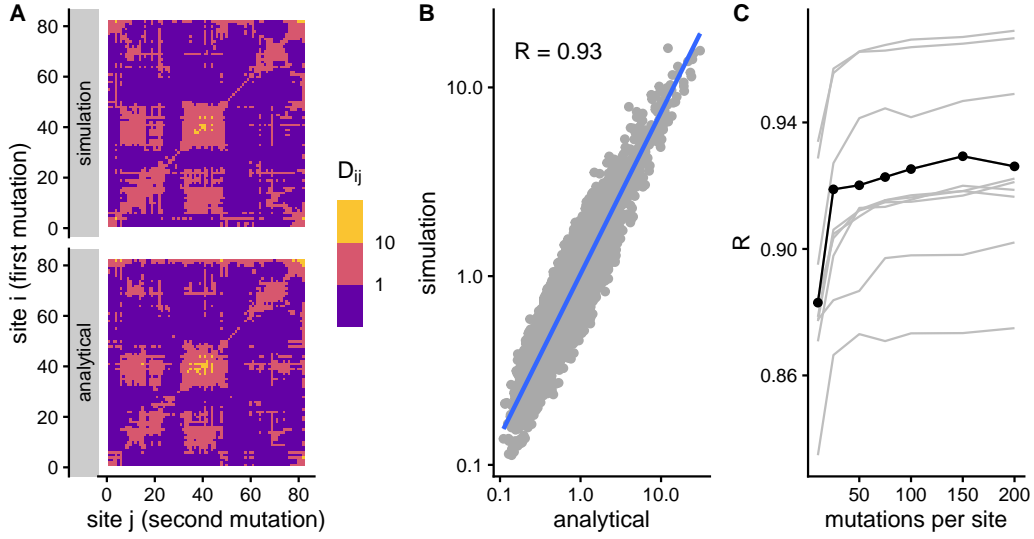
### Sensitivity matrix, d1fxla2



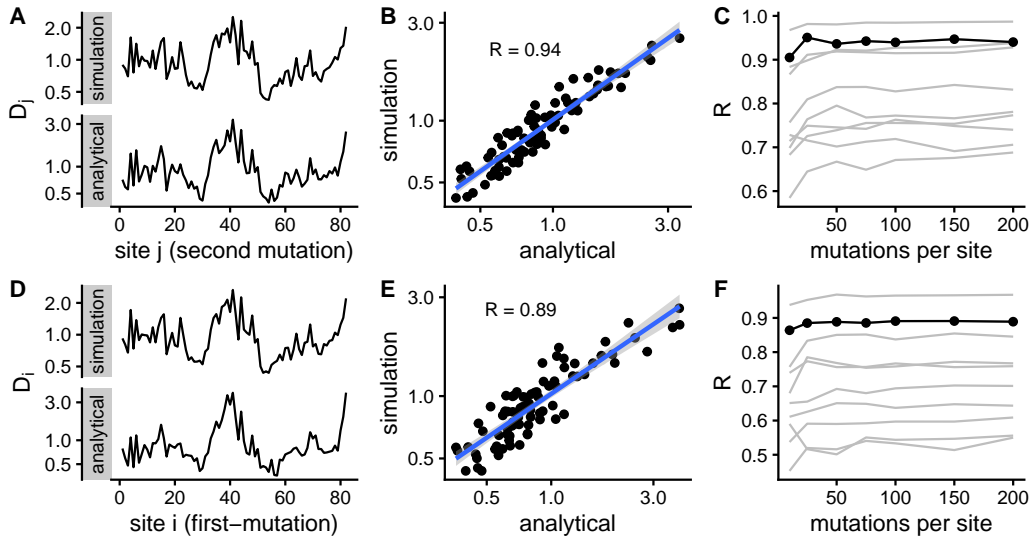
### Influence and sensitivity profiles, d1fxla2



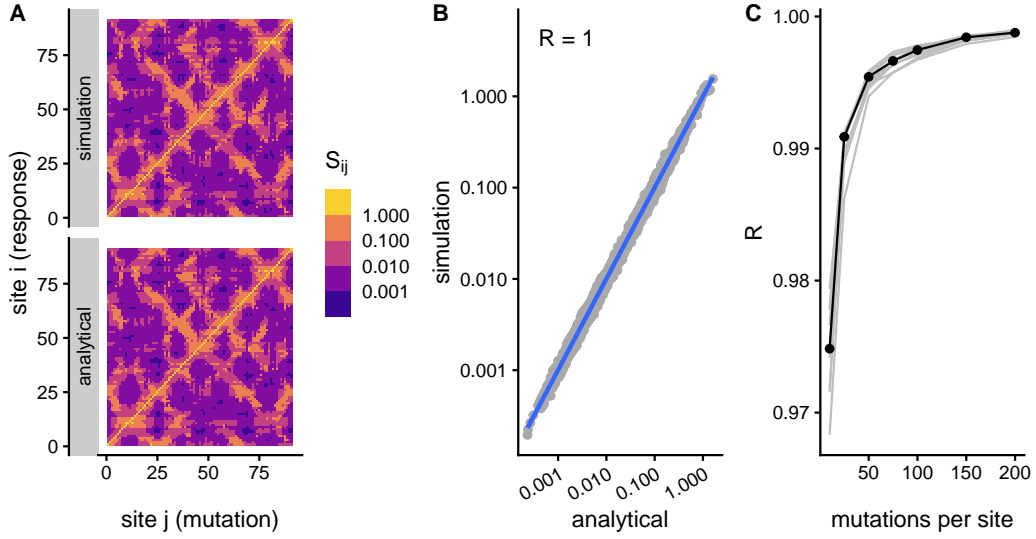
### Compensation matrix, d1fxla2



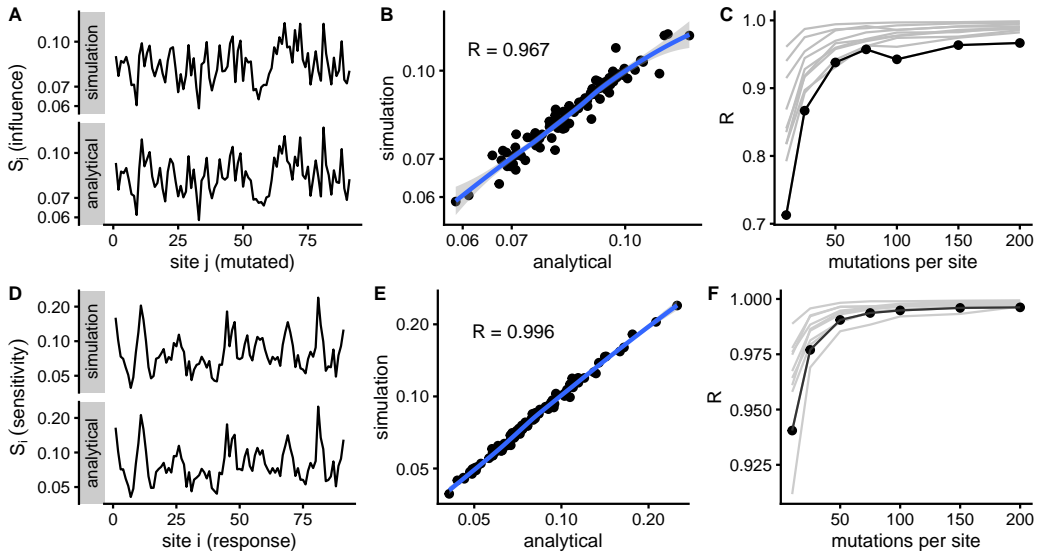
### Compensation profiles, d1fxla2



### Sensitivity matrix, d1bxva

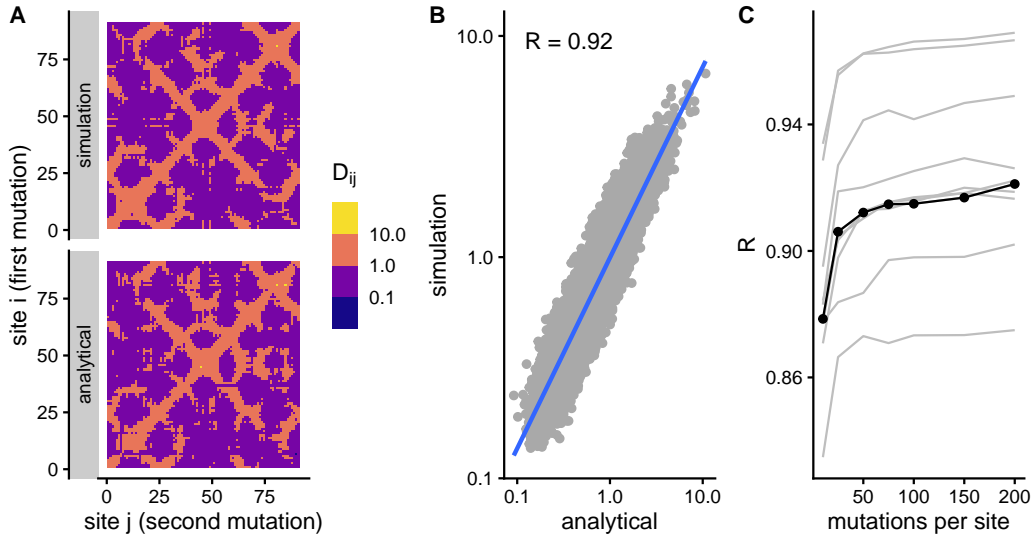


### Influence and sensitivity profiles, d1bxva

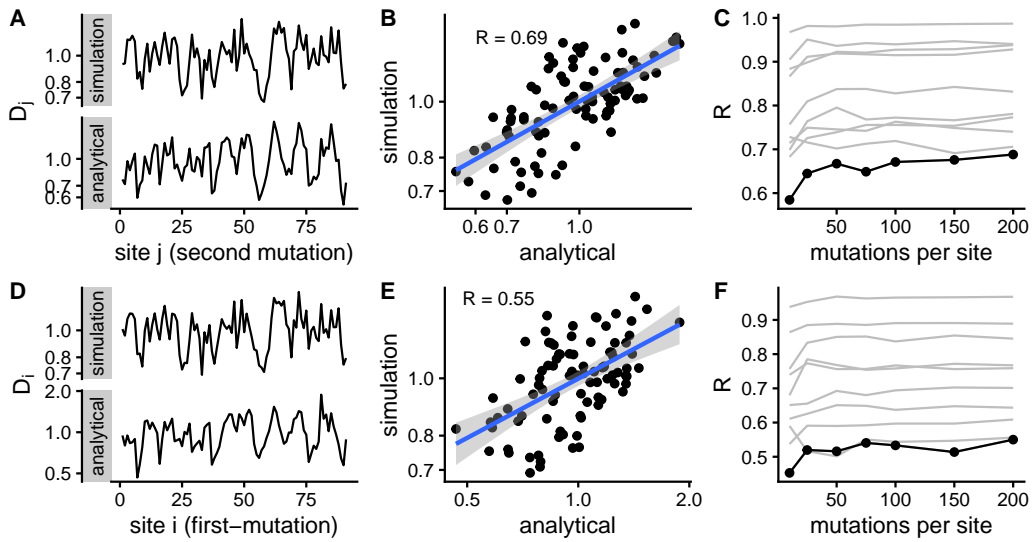




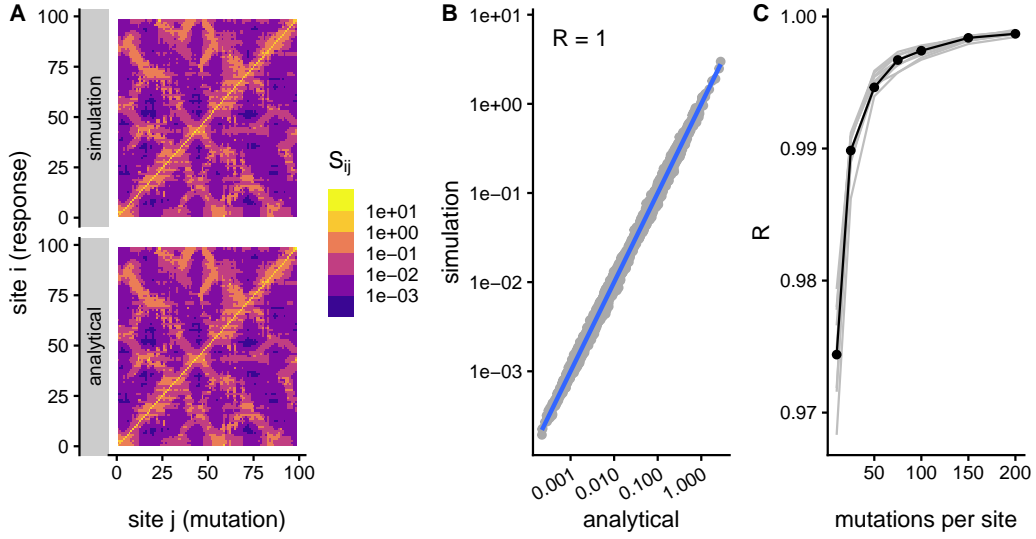
### Compensation matrix, d1bxva



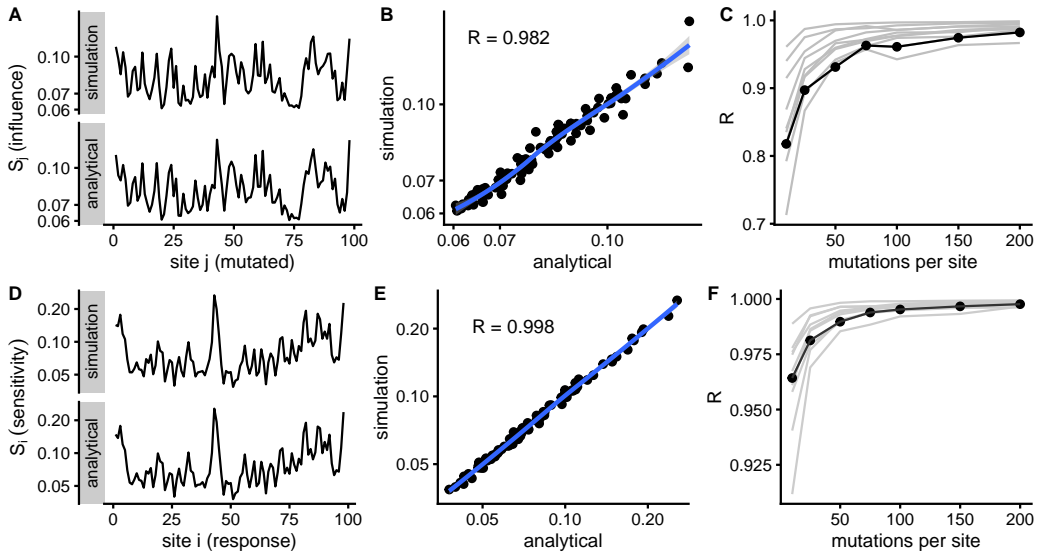
### Compensation profiles, d1bxva



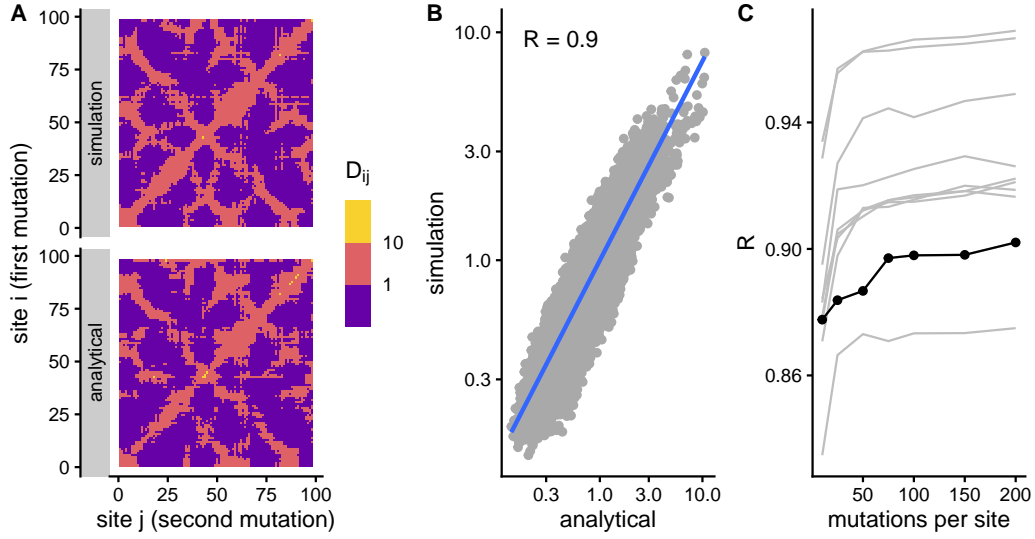
### Sensitivity matrix, d2acya



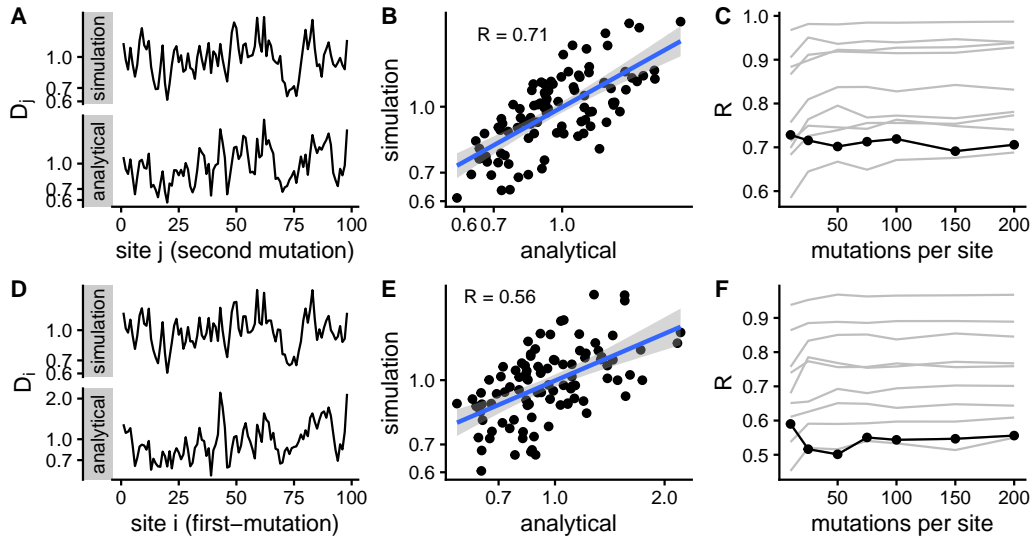
### Influence and sensitivity profiles, d2acya



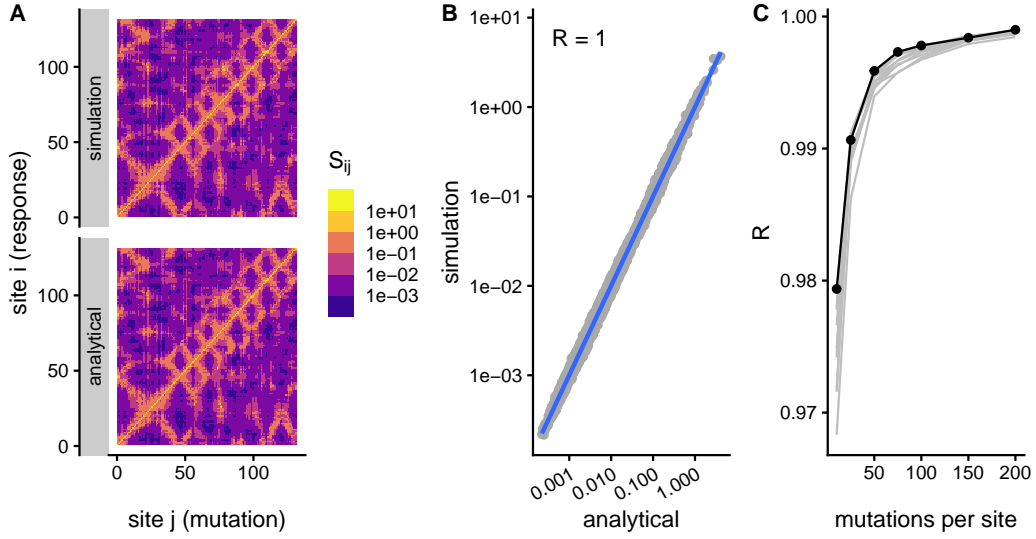
### Compensation matrix, d2acya



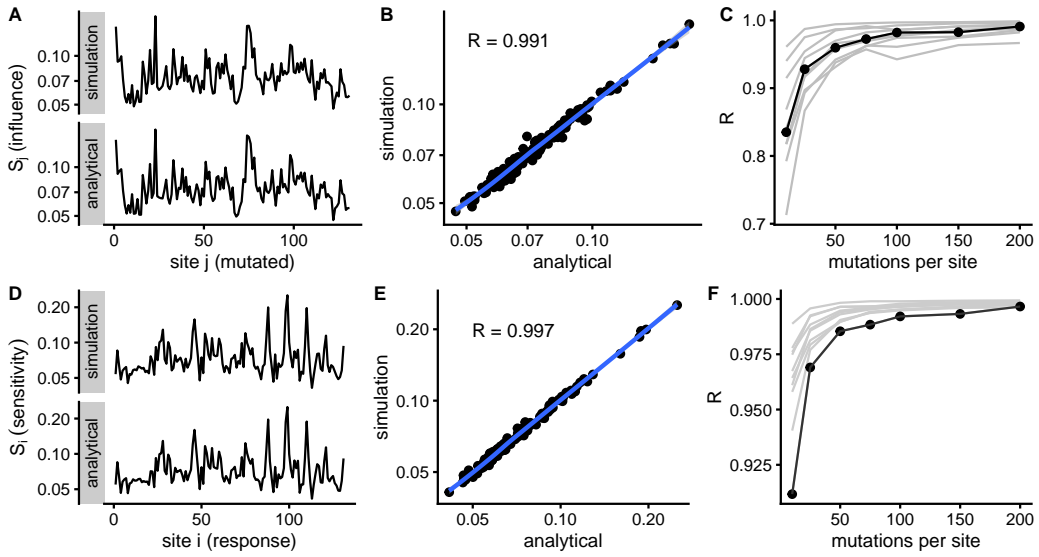
### Compensation profiles, d2acya



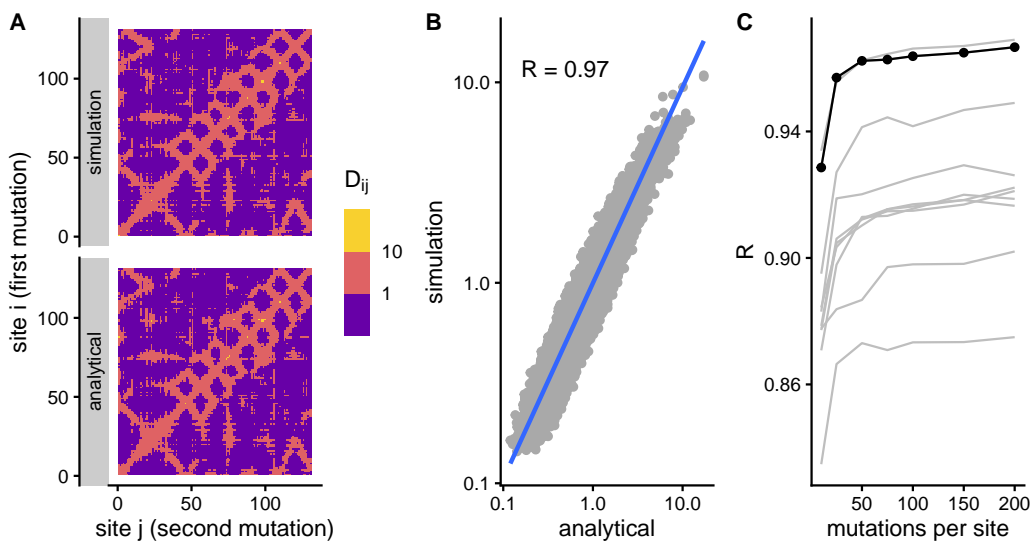
### Sensitivity matrix, d1hmta



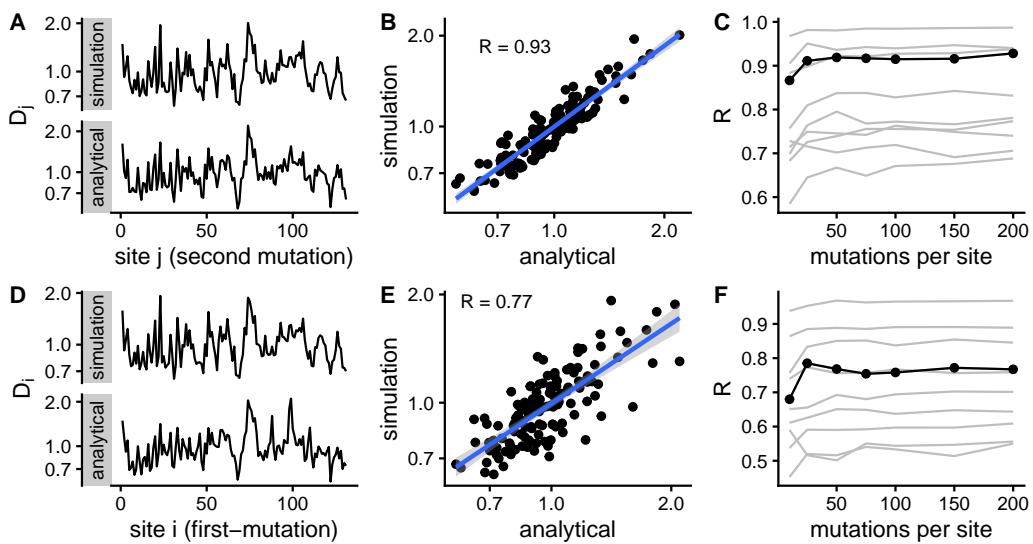
### Influence and sensitivity profiles, d1hmta



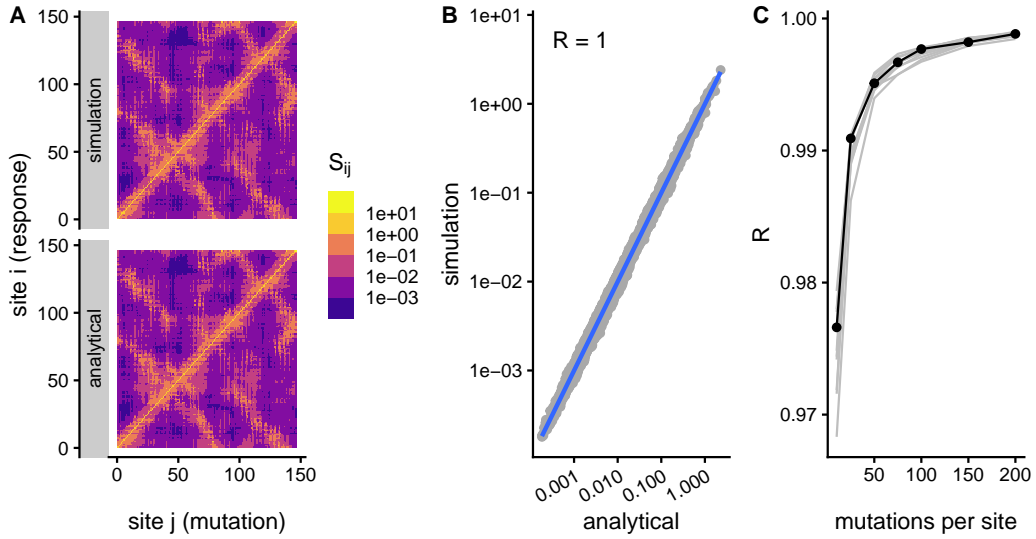
### Compensation matrix, d1hmta



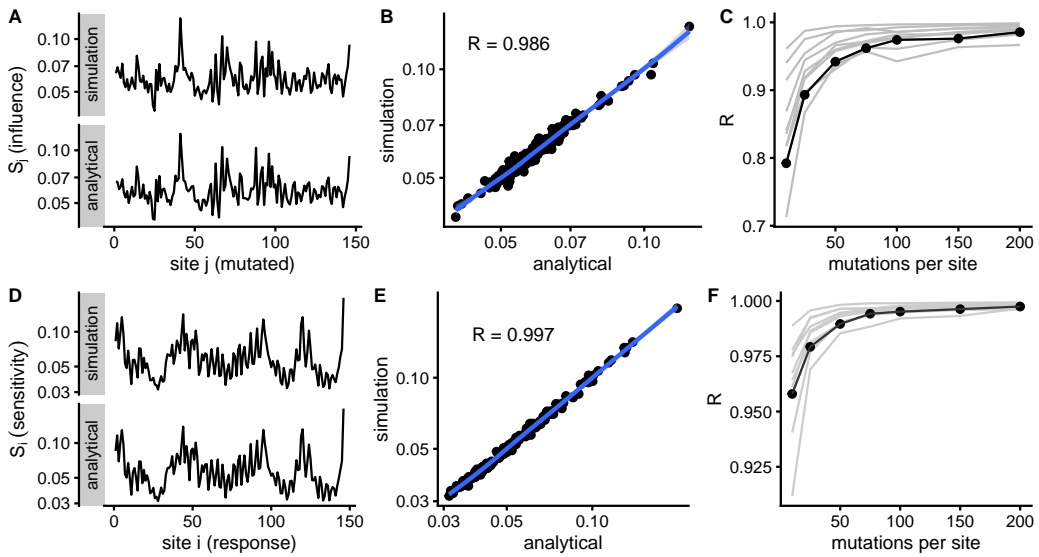
### Compensation profiles, d1hmta



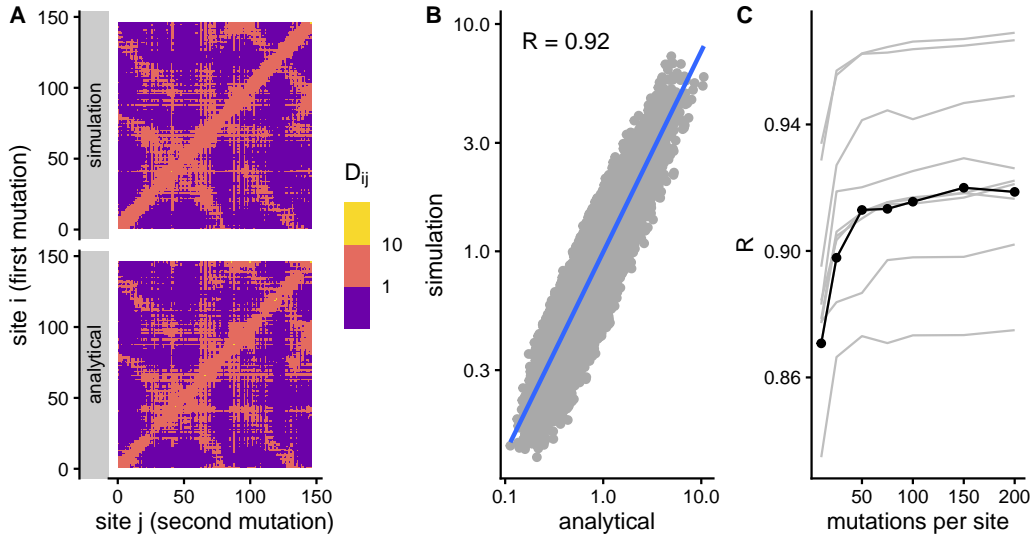
### Sensitivity matrix, d1a4fb



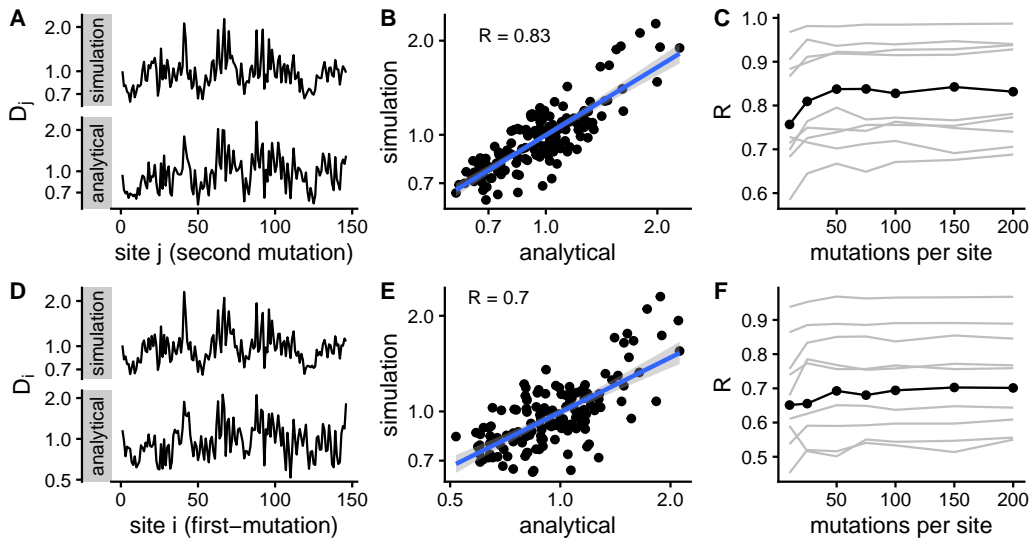
### Influence and sensitivity profiles, d1a4fb



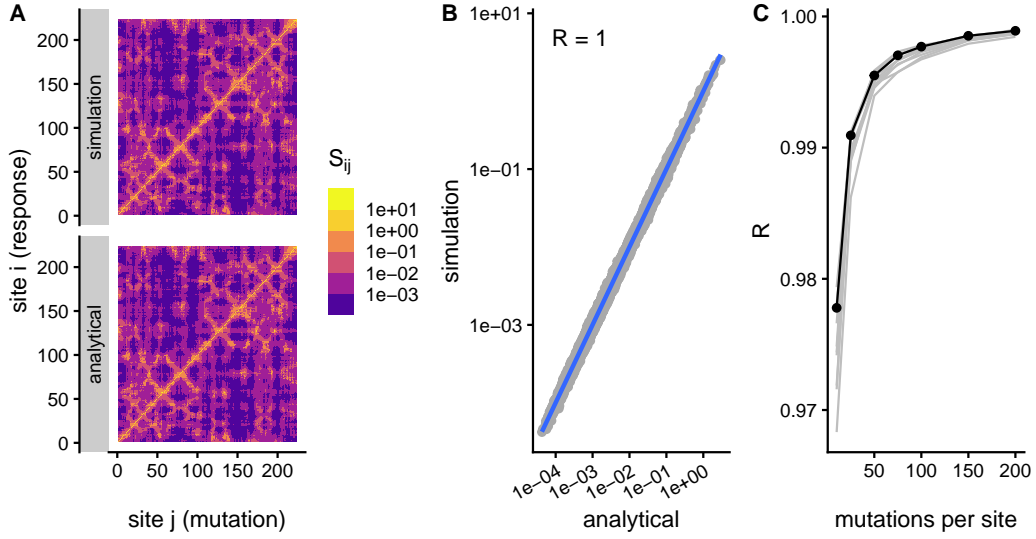
### Compensation matrix, d1a4fb



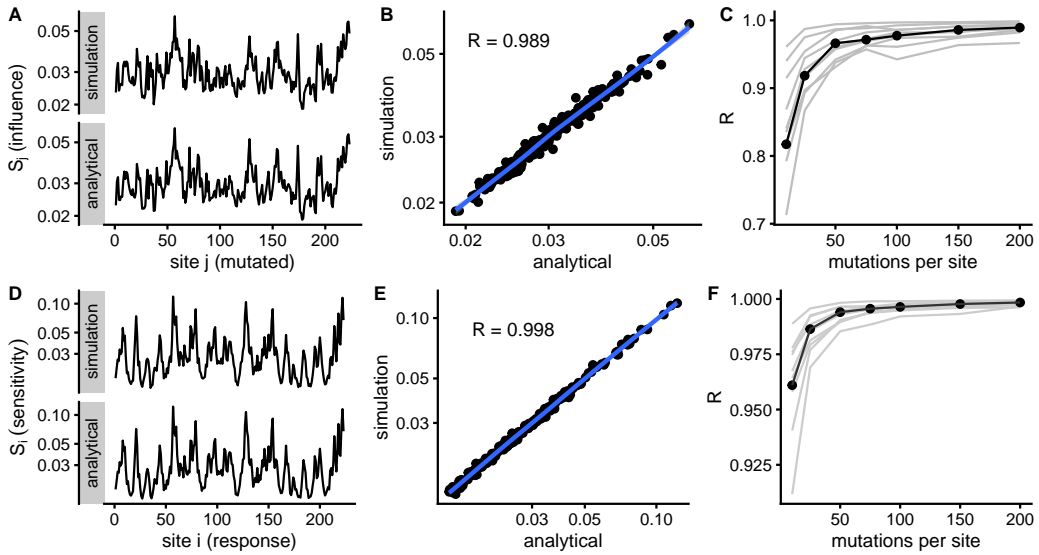
### Compensation profiles, d1a4fb



### Sensitivity matrix, d1mcta

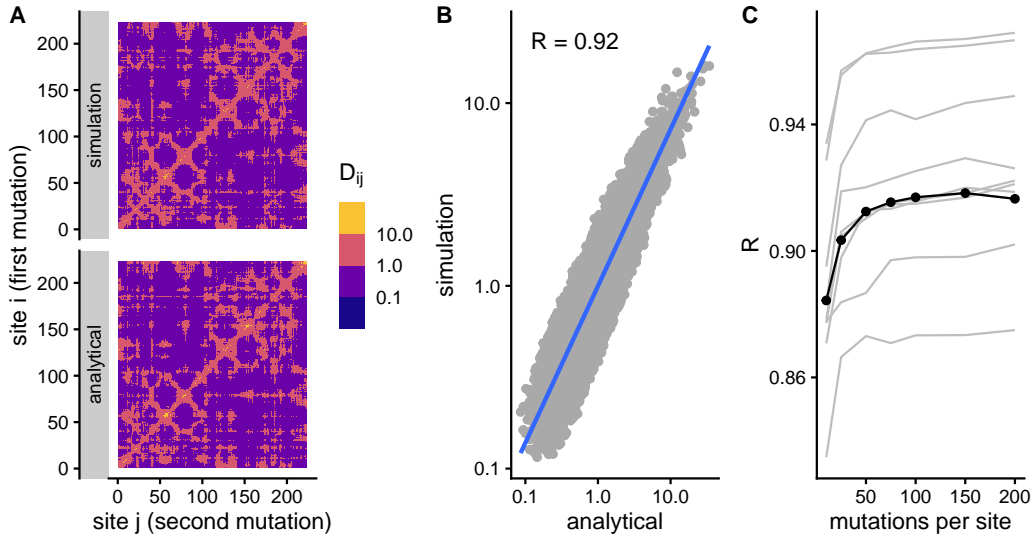


### Influence and sensitivity profiles, d1mcta

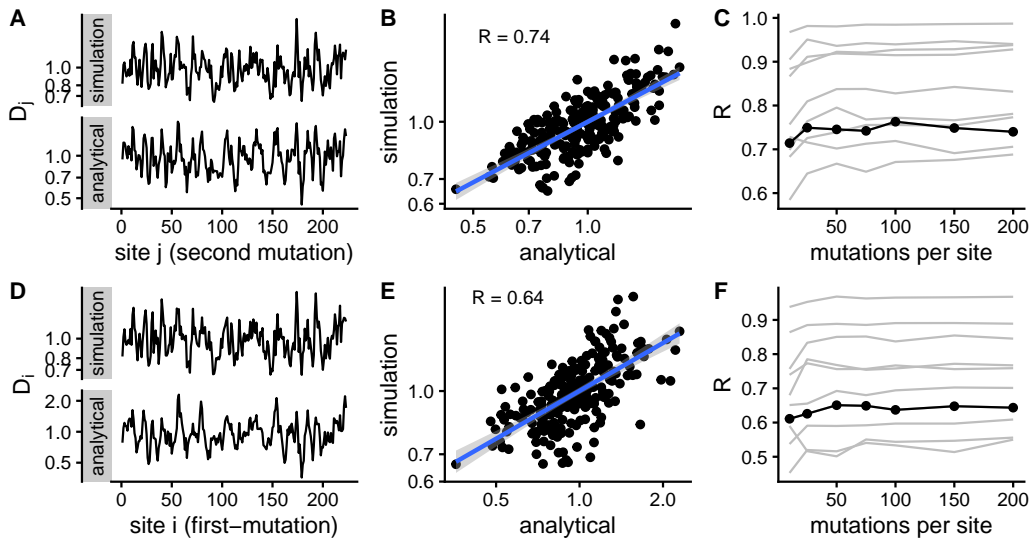




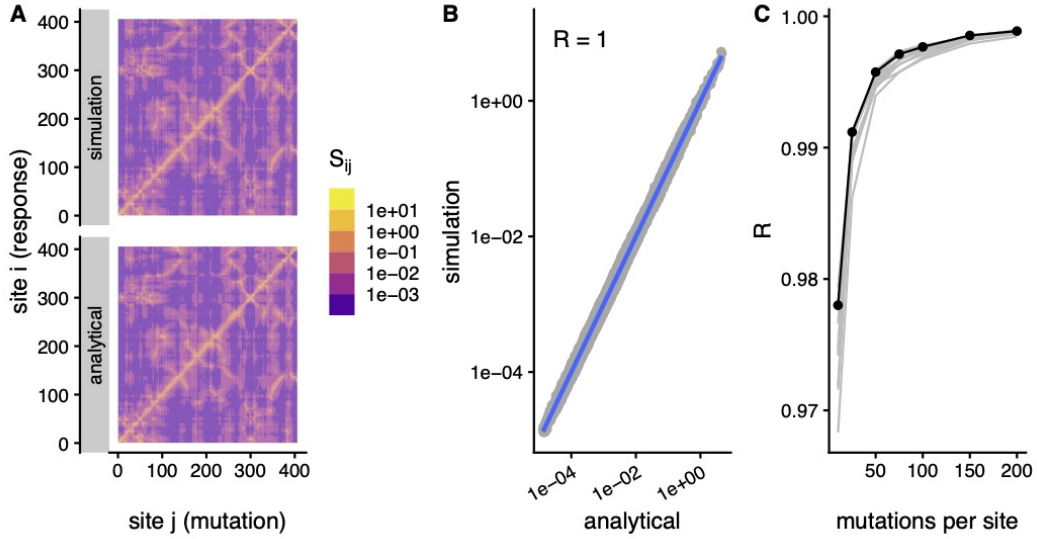
### Compensation matrix, d1mcta



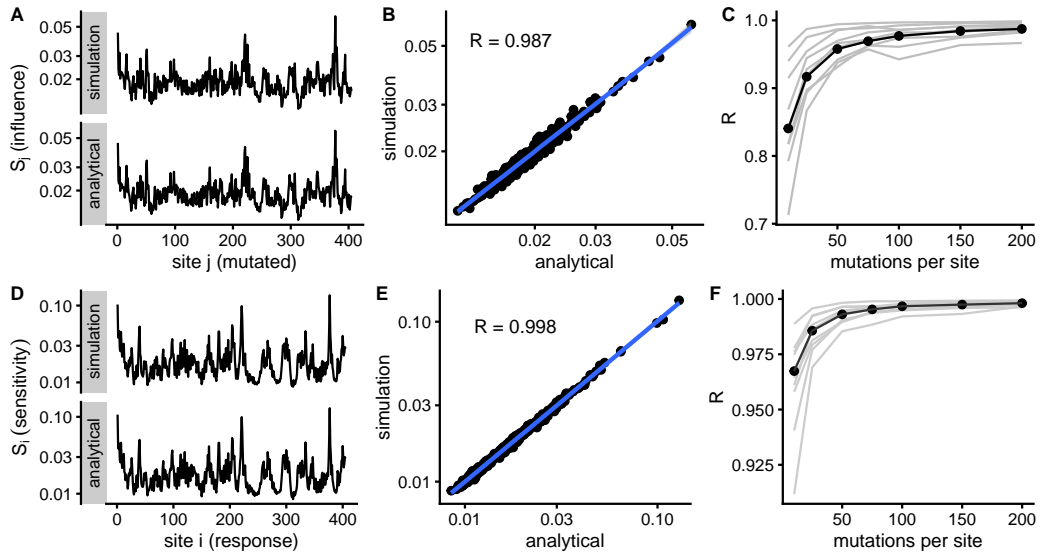
### Compensation profiles, d1mcta



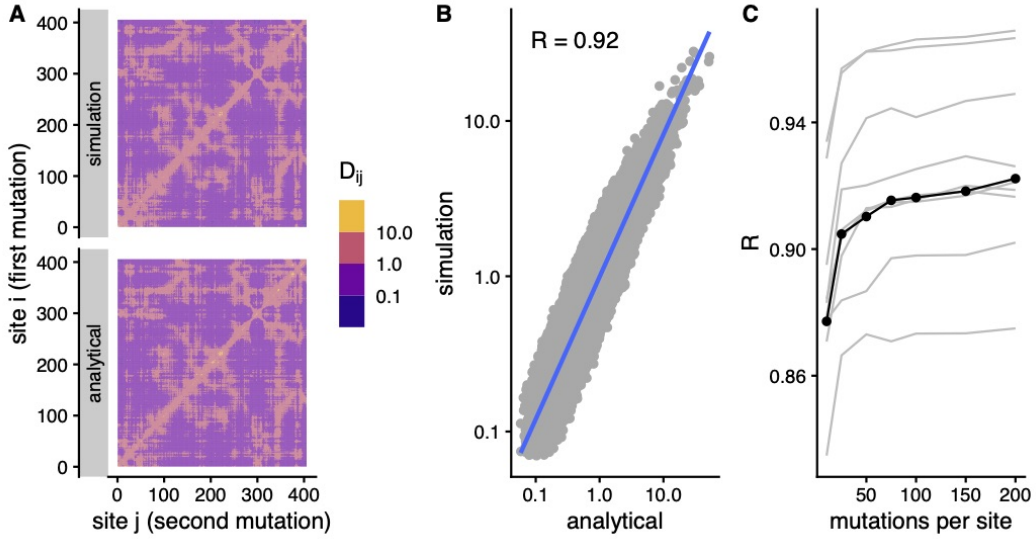
### Sensitivity matrix, d2l8ma



### Influence and sensitivity profiles, d2l8ma



### Compensation matrix, d2l8ma



### Compensation profiles, d2l8ma

