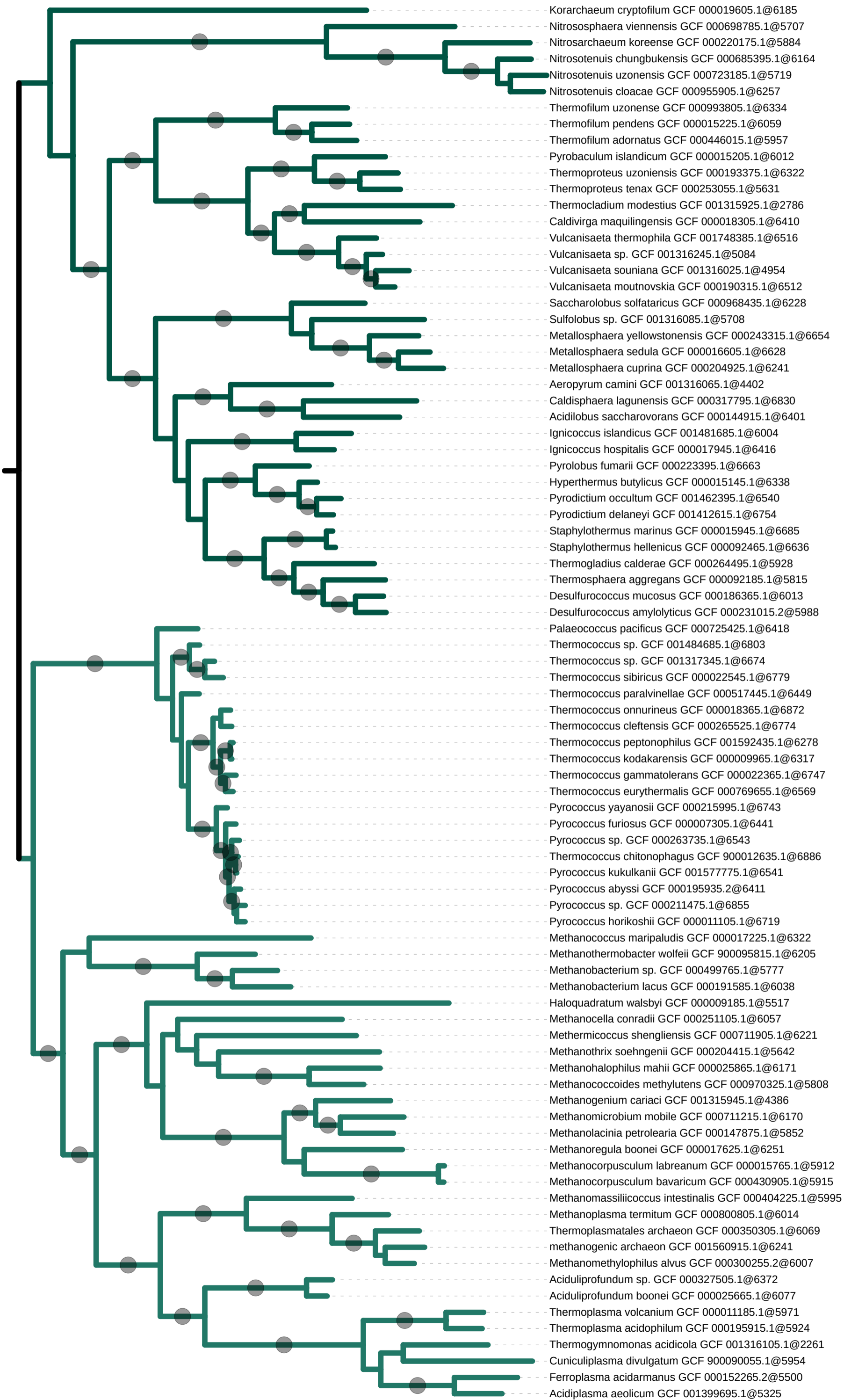


Tree scale: 0.1



Korarchaeum cryptofilum GCF 000019605.1@6185
Nitrososphaera viennensis GCF 000698785.1@5707
Nitrosarchaeum koreense GCF 000220175.1@5884
Nitrosotenuis chungbukensis GCF 000685395.1@6164
Nitrosotenuis uzonensis GCF 000723185.1@5719
Nitrosotenuis cloacae GCF 000955905.1@6257
Thermofilum uzonense GCF 000993805.1@6334
Thermofilum pendens GCF 000015225.1@6059
Thermofilum adornatus GCF 000446015.1@5957
Pyrobaculum islandicum GCF 000015205.1@6012
Thermoproteus uzoniensis GCF 000193375.1@6322
Thermoproteus tenax GCF 000253055.1@5631
Thermocladium modestius GCF 001315925.1@2786
Caldivirga maquilingensis GCF 000018305.1@6410
Vulcanisaeta thermophila GCF 001748385.1@6516
Vulcanisaeta sp. GCF 001316245.1@5084
Vulcanisaeta souniana GCF 001316025.1@4954
Vulcanisaeta moutnovskia GCF 000190315.1@6512
Saccharolobus solfataricus GCF 000968435.1@6228
Sulfolobus sp. GCF 001316085.1@5708
Metallosphaera yellowstonensis GCF 000243315.1@6654
Metallosphaera sedula GCF 000016605.1@6628
Metallosphaera cuprina GCF 000204925.1@6241
Aeropyrum camini GCF 001316065.1@4402
Caldisphaera lagunensis GCF 000317795.1@6830
Acidilobus saccharovorans GCF 000144915.1@6401
Ignicoccus islandicus GCF 001481685.1@6004
Ignicoccus hospitalis GCF 000017945.1@6416
Pyrolobus fumarii GCF 000223395.1@6663
Hyperthermus butylicus GCF 000015145.1@6338
Pyrodictium occultum GCF 001462395.1@6540
Pyrodictium delaneyi GCF 001412615.1@6754
Staphylothermus marinus GCF 000015945.1@6685
Staphylothermus hellenicus GCF 000092465.1@6636
Thermogladus calderae GCF 000264495.1@5928
Thermosphaera aggregans GCF 000092185.1@5815
Desulfurococcus mucosus GCF 000186365.1@6013
Desulfurococcus amyolyticus GCF 000231015.2@5988
Palaeococcus pacificus GCF 000725425.1@6418
Thermococcus sp. GCF 001484685.1@6803
Thermococcus sp. GCF 001317345.1@6674
Thermococcus sibiricus GCF 000022545.1@6779
Thermococcus paralvinellae GCF 000517445.1@6449
Thermococcus onnurineus GCF 000018365.1@6872
Thermococcus cleftensis GCF 000265525.1@6774
Thermococcus peptonophilus GCF 001592435.1@6278
Thermococcus kodakarensis GCF 000009965.1@6317
Thermococcus gammatolerans GCF 000022365.1@6747
Thermococcus eurythermalis GCF 000769655.1@6569
Pyrococcus yayanosii GCF 000215995.1@6743
Pyrococcus furiosus GCF 000007305.1@6441
Pyrococcus sp. GCF 000263735.1@6543
Thermococcus chitonophagus GCF 900012635.1@6886
Pyrococcus kukulkanii GCF 001577775.1@6541
Pyrococcus abyssi GCF 000195935.2@6411
Pyrococcus sp. GCF 000211475.1@6855
Pyrococcus horikoshii GCF 000011105.1@6719
Methanococcus maripaludis GCF 000017225.1@6322
Methanothermobacter wolfeii GCF 900095815.1@6205
Methanobacterium sp. GCF 000499765.1@5777
Methanobacterium lacus GCF 000191585.1@6038
Haloquadratum walsbyi GCF 000009185.1@5517
Methanocella conradii GCF 000251105.1@6057
Methermicoccus shengliensis GCF 000711905.1@6221
Methanotherx soehngeni GCF 000204415.1@5642
Methanohalophilus mahii GCF 000025865.1@6171
Methanococcoides methylutens GCF 000970325.1@5808
Methanogenium cariaci GCF 001315945.1@4386
Methanomicrobium mobile GCF 000711215.1@6170
Methanolacinia petrolearia GCF 000147875.1@5852
Methanoregula boonei GCF 000017625.1@6251
Methanocorpusculum labreanum GCF 000015765.1@5912
Methanocorpusculum bavaricum GCF 000430905.1@5915
Methanomassiliicoccus intestinalis GCF 000404225.1@5995
Methanoplasma termitum GCF 000800805.1@6014
Thermoplasmatales archaeon GCF 000350305.1@6069
methanogenic archaeon GCF 001560915.1@6241
Methanomethylphilus alvus GCF 000300255.2@6007
Aciduliprofundum sp. GCF 000327505.1@6372
Aciduliprofundum boonei GCF 000025665.1@6077
Thermoplasma volcanium GCF 000011185.1@5971
Thermoplasma acidophilum GCF 000195915.1@5924
Thermogymnomonas acidicola GCF 001316105.1@2261
Cuniculiplasma divulgatum GCF 900090055.1@5954
Ferroplasma acidarmanus GCF 000152265.2@5500
Acidiplasma aeolicum GCF 001399695.1@5325

Thaumarchaeota

Thermoproteales

Sulfolobales

Acidilobales

Desulfurococcales

Thermococci

Methanomada
Group

Stenosarchaea
Group

Diaforarchaea
Group

TACK Group

Euryarchaeota