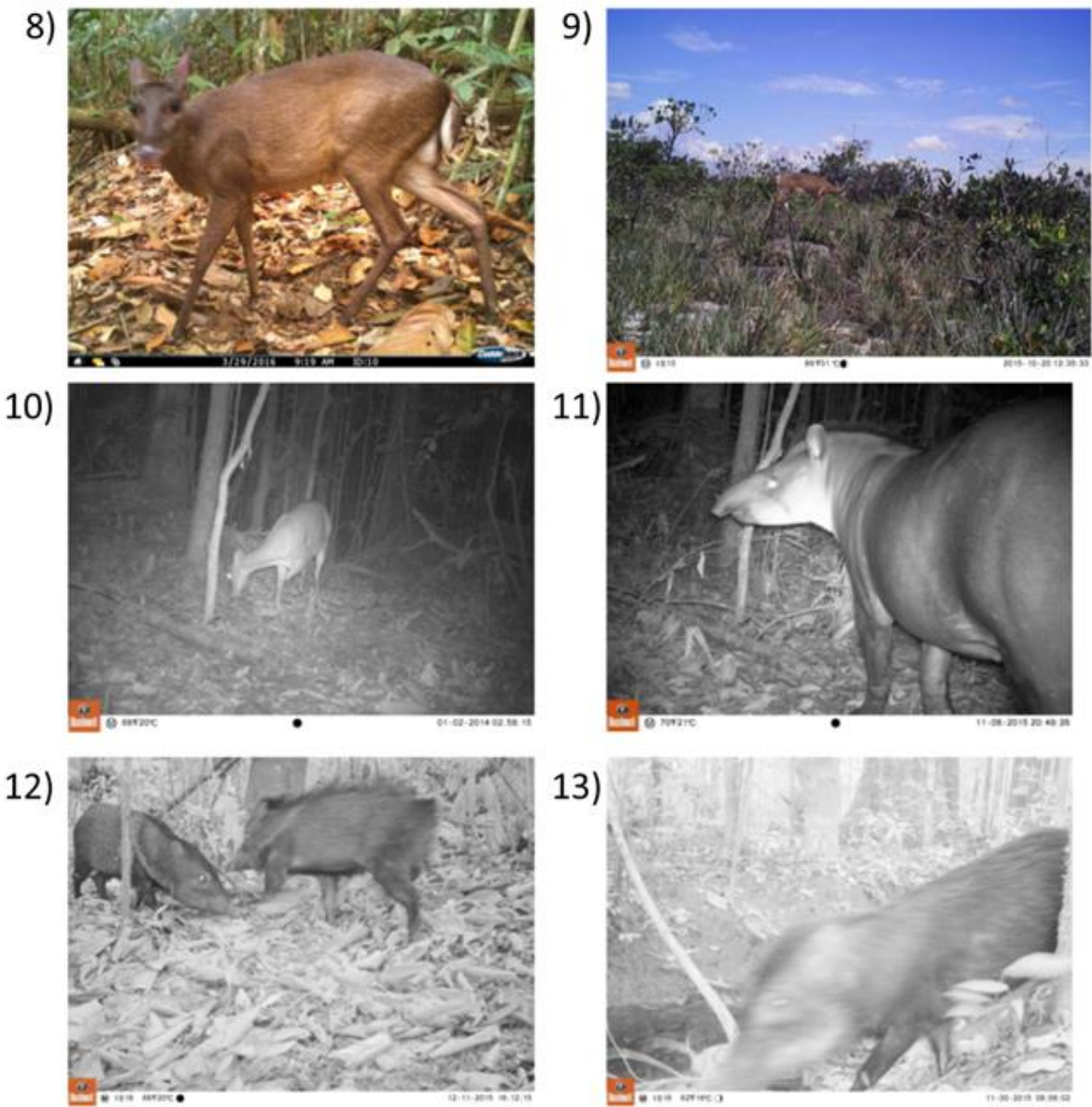


Figure S1. Wildlife recorded with camera traps in the study area.



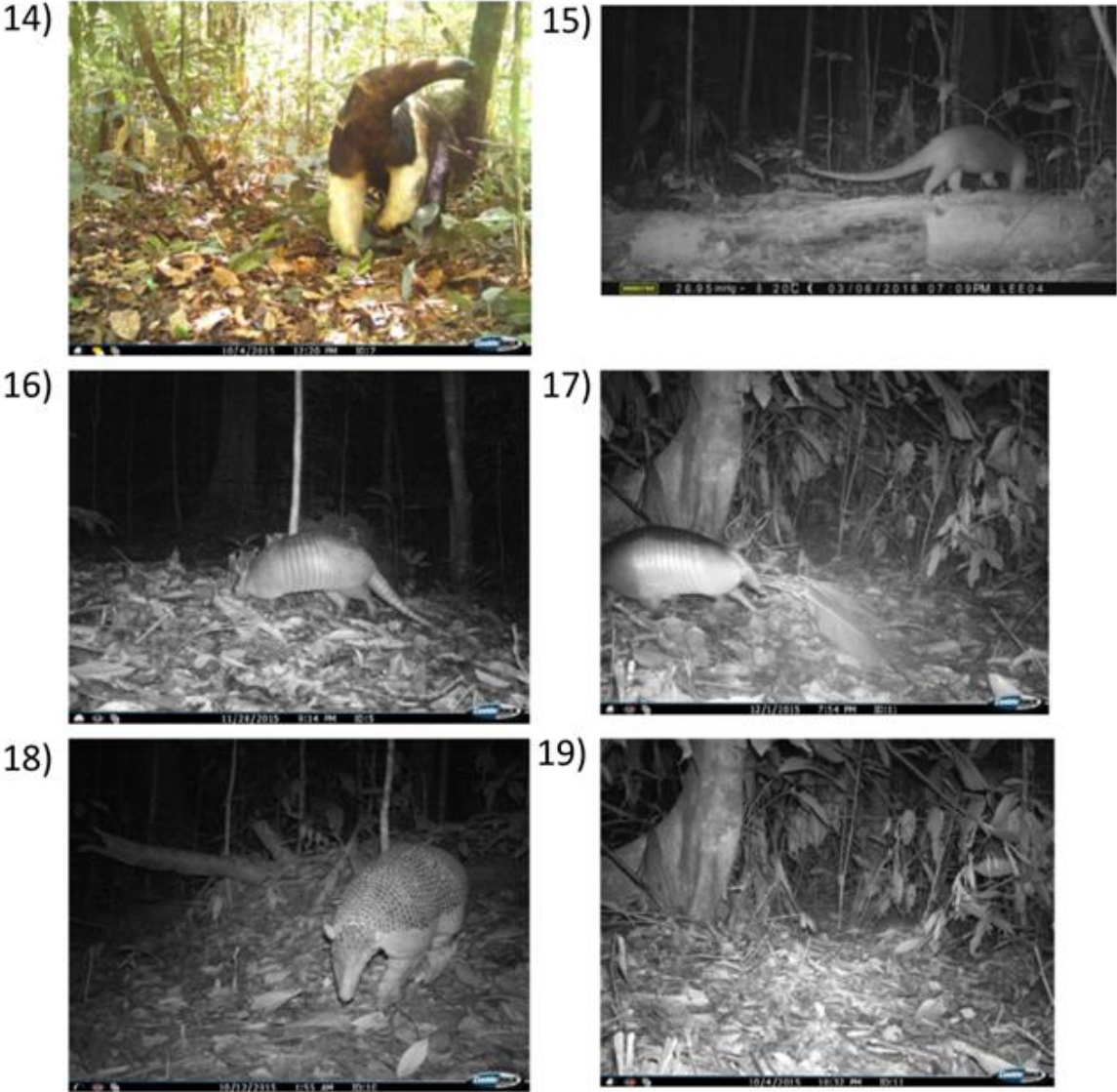
- 1. *Puma concolor*
- 2. *Panthera onca*
- 3. *Leopardus pardalis*
- 4. *Leopardus wiedii*
- 5. *Nasua nasua*
- 6. *Cerdocyon thous*
- 7. *Eira barbara*

Figure S1. Wildlife recorded with camera traps in the study area.



- 8. *Mazama gouazoubira*
- 9. *Odocoileus virginianus*
- 10. *Mazama americana*
- 11. *Tapirus terrestris*
- 12. *Pecari tajacu*
- 13. *Tayassu pecari*

Figure S1. Wildlife recorded with camera traps in the study area.



- 14. *Myrmecophaga tridactyla*
- 15. *Tamandua tetradactyla*
- 16. *Dasyus kappleri*
- 17. *Dasyus novemcinctus*
- 18. *Priodontes maximus*
- 19. *Cabassous unicinctus*