

ID	Age (y)	Gender	Stone type	Renal clear cell carcinoma	Hypertension	Diabetes
Control-1	47	Male	-	Yes	No	No
Control-2	43	Male	-	Yes	Yes	No
Control-3	57	Male	-	Yes	No	No
Stone-1	53	Male	Calcium oxalate monohydrate/carbonate apatite phosphate	No	No	No
Stone-2	50	Male	Calcium oxalate monohydrate/carbonate apatite phosphate	No	No	No
Stone-3	45	Female	Calcium oxalate monohydrate/carbonate apatite phosphate	No	Yes	No

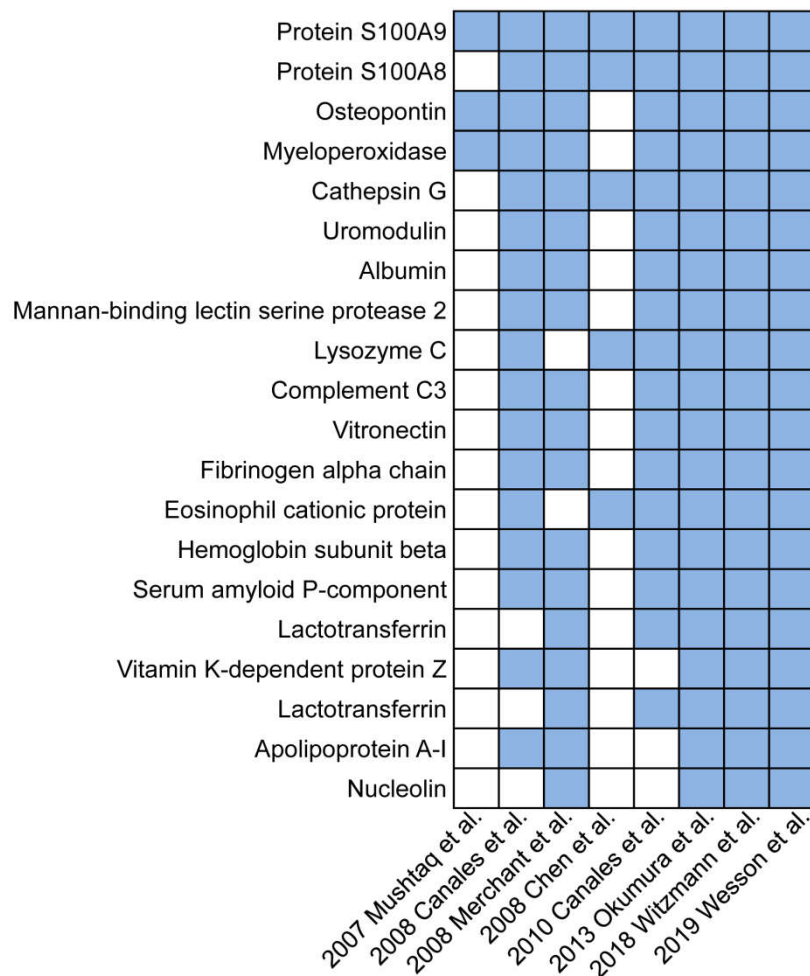


Figure S1. The 20 most common proteins in calcium oxalate stone matrix.